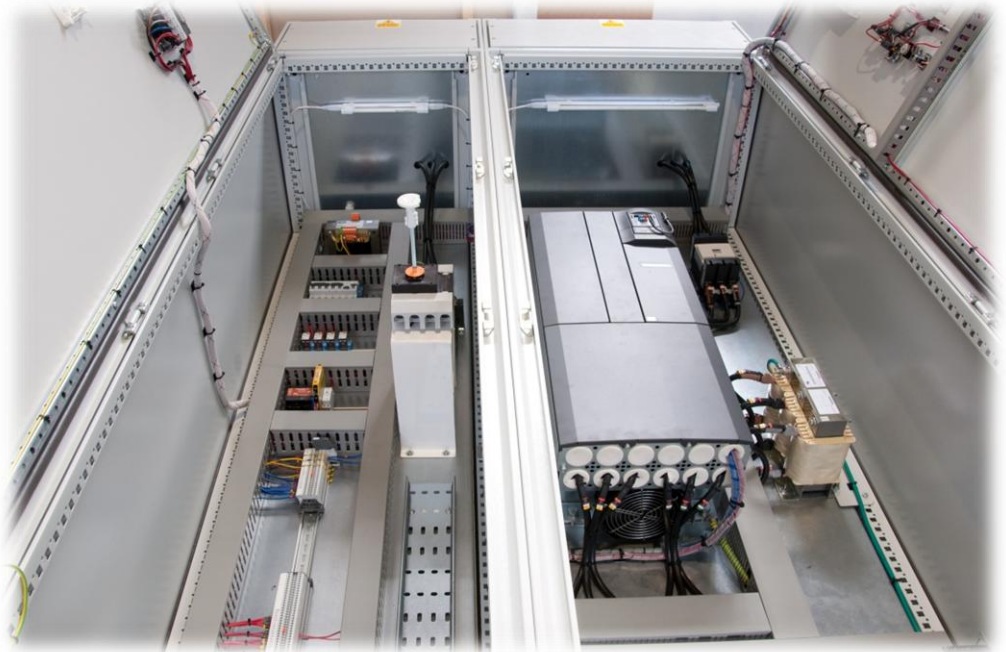


Large Inverter Panel

This large floor standing control panel was designed to house a 55Kw motor inverter. Also housed in the 2.4Metre high enclosure was a bus-bar for distribution, emergency stop relay, input and output chokes and control wiring and devices to interface with equipment on plant.



The control panel was built to order for our customer as a replacement for an existing control panel. The large 55Kw inverter is controlled from the front of the enclosure via a keypad with integrated display. All speed adjustments are made from a potentiometer also mounted on the front of the enclosure. As with all our large floor standing control panels, both sections are illuminated to aid installation and testing on site. The panel is fully tested in our workshop where the inverter parameters are also set-up. The control panel also



housed a 'multi-function controller' which continuously monitors the line voltage and current demand on each phase. These figures are displayed on an LCD screen mounted on the front of the enclosure. Another regular feature found on all our control panels is a category 4 safety relay (any category can be integrated as per the needs of our customers). Due to the size of the inverter in this particular control panel it was necessary to install two fan/filter units to keep the ambient temperature to 25°C. All our control panels are finished to a high quality standard and fully inspected during the production process.

