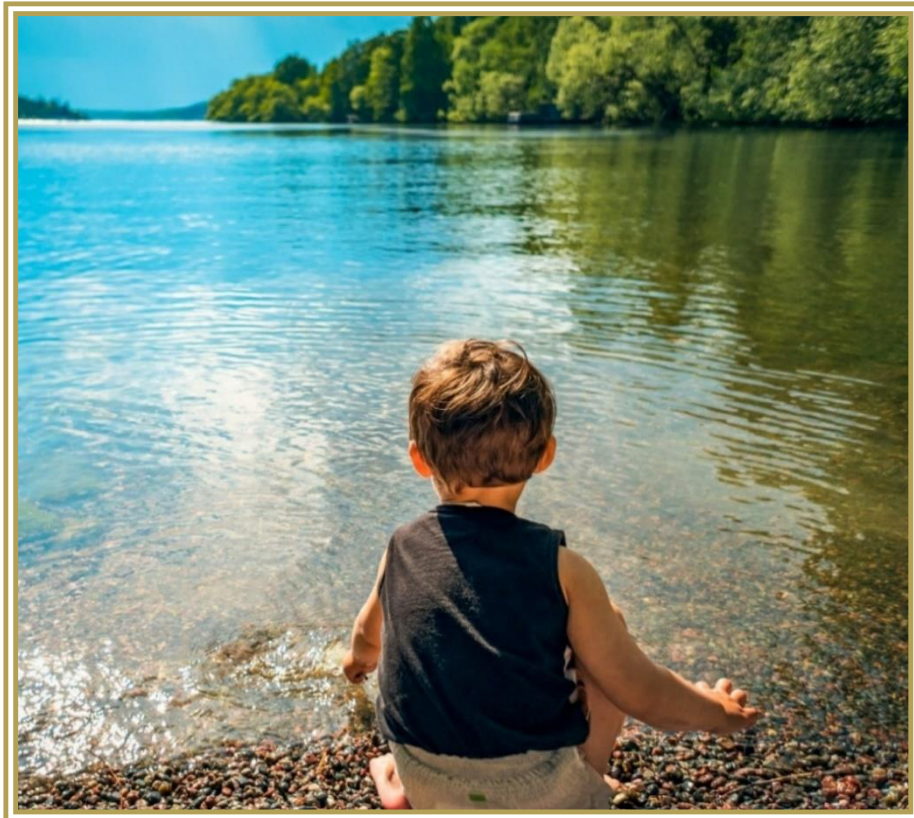


Cosmic Overview

Cancer New Moon 2022



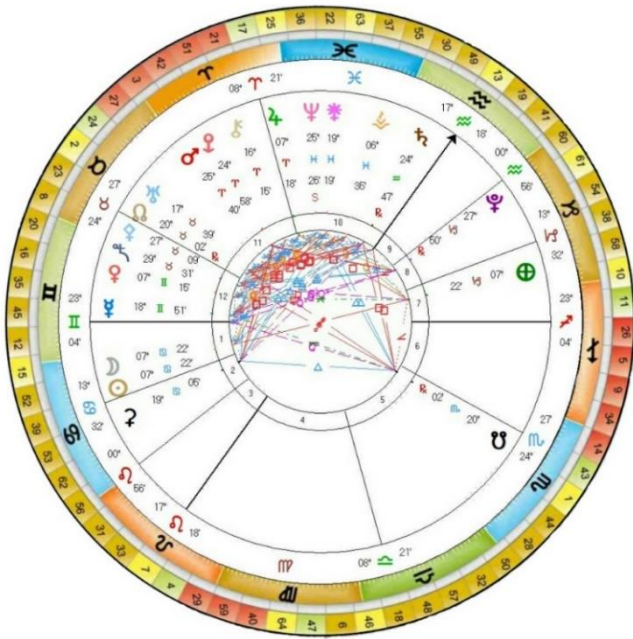
*In the midst of movement and chaos,
keep stillness inside of you.*

Deepak Chopra

*The real spiritual progress of an aspirant is measured
by the extent to which inner tranquillity is achieved.*

Sivananda

'I AM' the Light Within Form



The New Moon this month, at 7^o Cancer 22, takes place on either the 28th or 29th of June, depending on where you are living in the world.

The Solstice which took place a few days earlier, on the 21st, is the point where the Sun reaches either its highest or lowest point in the sky, for the year, and where the Sun appears to stand still.

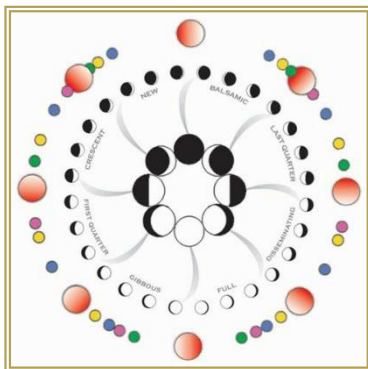
The Solstices and indeed the Equinoxes have been markers in time for humanity over thousands of years as the Earth circles around the Sun in impeccable precision. These Solstices, or *Markers in Time*, are like Cosmic 'gear' changes, right now, marking increased Light in the N. Hemisphere, whilst the S. Hemisphere enters the longer and darker nights of Winter. They mark thresholds – they are Still Points within our orbital journey around the Sun.

The Summer and Winter Solstices occur in the Zodiacal signs of Cancer and Capricorn. In the Northern Hemisphere, Cancer underpins the Summer Solstice and in the Southern Hemisphere, Capricorn underpins their Summer Solstice. Cancer is known as the 'Gate In' and Capricorn as the 'Gate Out'.

Both Cancer and Capricorn carry the 3rd Ray of Active Intelligence, which works to bring about a synthesis on the physical Earth plane, of will/power and love/wisdom. They also carry the 7th Ray of Ceremonial Order and Magic which focuses on co-ordinating and fusing the inner Lifeforce/Spirit with the outer world of physical Matter.



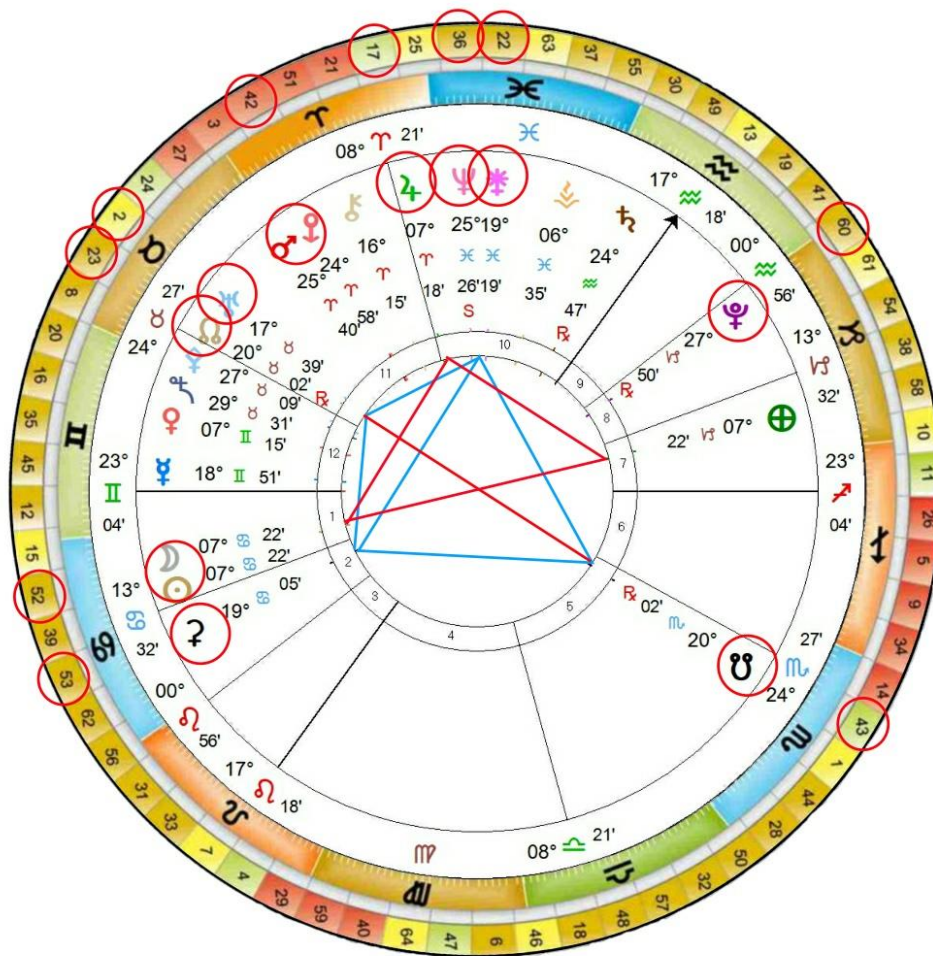
Cancer at the personality level is ruled by the Moon and as such is expressing the group mass consciousness, that operates from the desire nature, which can create a sense of hunger on the physical, emotional and mental levels – a deep sense of 'I Need'.



All of us when incarnating onto this planet experience life through the Moon cycles. For the first months of life, prior to speech, we interpret our environment through this Collective field. When we are babies we are like sponges absorbing the impressions held in the environment and these impressions are then laid down into our subconsciousness, via the lunation cycle. When speech begins around the age of eighteen months, we begin our outer journey of identifying with names and objects, but still the cycles of the Moon continue and by the time we are seven these subconscious beliefs become our 'gut' reactions and beliefs about how life is.

The Moon ruled by the 4th Ray of Harmony through Conflict underpins this Collective sense of neediness that has been part of the mass consciousness for eons. However, at the Soul level, Cancer is ruled by Neptune and any sense of separation and neediness has been transmuted and has evolved into a limitless compassion and devotion for all Life. Ultimately the Soul centred Cancerian is on a quest to discover the Light that is contained within the Form when Spirit and Matter unite, as channels for *the Light of the World.*

Chart for the Cancer New Moon



The New Moon 29th June 2022 03:51 am BST London UK
<https://www.timeanddate.com/moon/phases/>

Whatever sign of the Zodiac we incarnate into, at the time of our birth, each one of us will experience the lunation cycles as underpinning our impressions and responses to life – how the subconscious feeds into our daily consciousness. Right now, the collective consciousness is under heightened strain with all that is occurring in the outer world – a sense of deep instability that has grown from out of the last two disruptive years of information, misinformation and censorship that has left the ‘mind’ confused and uncertain. If we only rely on our minds for security then there will be a sense of being rudderless.

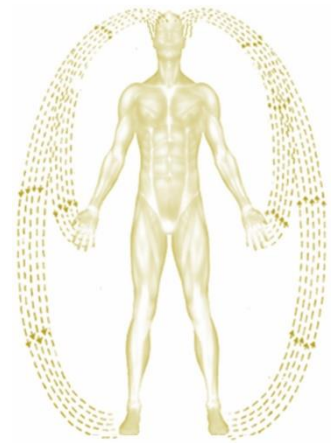
From out of this stressful confusion, however, we have the potential to go deeper, into the Stillness that resides underneath all of the mental chatter, arguments and claims, to deep within our Being, where *Knowing*, rather than thinking lies. This is really returning to a state that was operating in early childhood.

You will see that at the time of the New Moon, the Sun and Moon are in a T Square with Jupiter and the Earth and there is also a Kite Formation occurring between Neptune and Juno, the North Node and Uranus, Ceres and the South Node.

Looking at the T Square first we find the Sun and Moon on Gene Key 52 known as the **Still Point** moving through the Shadow of **Stress** to the Gift of **Restraint**, ultimately expressing as **Stillness**.

‘Stress is a collective pressure not a personal pressure. It is an energy field generated by every human being alive rather than being rooted in any specific personal issue. This means that Stress is also deeply connected to our environment and to those around us.’

*'Our environment is formed by the boundaries of the human aura. The average human aura extends to fill half of a normal sized room, so when you are in a room with someone else you share each other's aura – the more people you have in the room, the greater the collective aura grows. **Now because of the huge population existing on our planet it is no longer possible to entirely escape the vast collective energy field of humanity.** Billions of auras interlocking together form a great sheath that covers our world.'*



'Until human beings experience their Unity with all of creation they will create and be driven by this underlying Stress – the physical manifestation of our deepest and most hidden fear. The only way to escape this collective fear is to rise above it at an energetic level.'

*'The 52nd Gift contains a secret of ecology. All true endeavours require a profound understanding of Restraint, a phenomenon natural to all living systems. If a system is to last, it must learn to feed itself whilst it grows. If it is to proliferate it must diversify and if it is to be really successful it must have one vital factor right at its core from the very beginning – it must serve more than just itself. The 52 Gift you may divine, is a Gift that concerns human organisations. Act its deepest level, it contains the seed that will one day bring all human beings into a perfect organisational unity. **For now this Gift concerns our own trust in Life.**'*

*'The stored-up energy and potential within a human being is infinite in its proportions, but its potential must be managed economically and allowed to expand and grow in an organic fashion. **The Gift of Restraint is about non-interference.** When you apply this to your own life, you have to accept yourself as part of a far greater flow than you can see and as such you have to accept that there are times when you will feel deeply restrained. **To live this seed fully you must ask yourself 'How can I be of the greatest service to humanity'.***

One of the Siddhis we will see coming more and more into the world is the 52nd Siddhi. The 52nd Siddhi contains the Seed of a great new beginning and the original intention and dream of mankind – to realise our position as the Still Point at the heart of creation itself.



*'Within the human DNA, the torus at the heart of all being, is directly experienced through the state of enlightenment which unites Stillness with Bliss. **Stillness and Bliss are derived from a higher functioning of your genetics.** At the Siddhic level adrenaline is transmuted into rarefied hormones and neurotransmitters that induce Bliss and Stillness throughout the body.'*

*'The 52nd Siddhi emanates a collective energy field that will eventually pacify the human emotional system. **The aura of a single being manifesting this 52nd Siddhi will literally stop the thoughts of everyone in their vicinity.**'*

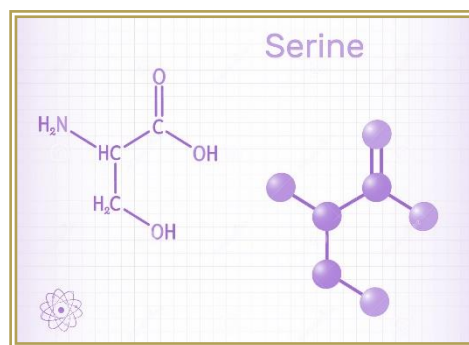
*'Every Siddhi floods the energy field of humanity with its Essence, so the presence of even a small number of beings at this level of consciousness will change the way in which all human emotions operate. **This influx of Stillness into our planetary aura will allow millions of people to follow their true destiny into far wider service of the whole.**'*

The Earth on Gene Key known as **From Stress to Bliss** moves through the collective Shadow of **Dissatisfaction**, to the Gift of **Vitality** to the state of **Bliss**.

*'The 58th Shadow of Dissatisfaction is very unspecific. **It is a lack of fulfilment rooted in the programming partner of this 58th Shadow, the 52nd Shadow of Stress.** It doesn't refer directly to a particular emotional state such as sadness, boredom, or frustration, or to a mental state such as anxiety or worry. It simply implies a lack of joy and a deep sense of restlessness or unease.'*

'The 58th Gene Key is part of the genetic family known as the Ring of Seeking, a complex codon that codes for the amino acid Serine. Each of the Gene Keys within this Group creates a different pressure inside of you. Together these pressures drive you to seek answers that can bring an end to the longing inside you.'

'All seeking is therefore partially rooted in Dissatisfaction and all seeking will eventually lead you inwards. It is this turning inwards that unlocks the huge reservoirs of Vitality that are available to you when you relax enough.'



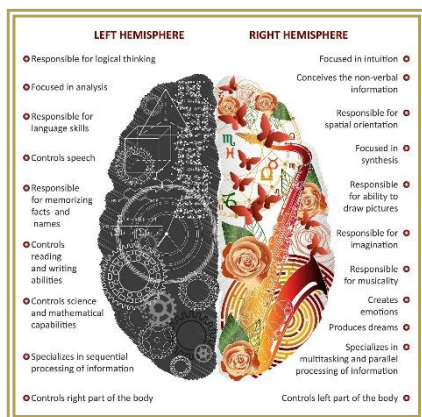
'The moment you accept your plight as a human being eternally driven to seek fulfilment in the future, everything in your life changes. The energy that has been seeking an outlet into the world through your Dissatisfaction is turned back upon itself, which forces it into the atomic structure of the body. The result is a kind of implosion of inner vital force, which catalyses micro processes within your physiology – in short you begin to become yourself once again.'

'At the Gift frequency Dissatisfaction now begins to turn into joy. This joyousness lies within every human being and is nothing short of Life expressing itself without resistance – it is the evolutionary urge to become self-aware. Your mind becomes quieter – your relationship to the future changes – this can be a time of intense physical transformation.'

'As your identification with the future progressively loosens, you are brought more and more deeply into the present moment. Your core Dissatisfaction is being transformed into Vitality. As the frequency of your Vitality attains a higher and higher pitch, at a certain point it peaks and catalyses a spontaneous shift in awareness. This vital force burrows so deeply into your being that it triggers a process within your DNA known as enlightenment.'

'When Consciousness comes, it comes into you like a flood wiping you clean in less than a microsecond. It is one of the greatest mysteries of existence. Once a being has realised enlightenment through the 58th Siddhi they become entirely unfocused. Their awareness stretches into infinity, their gaze becomes unfixed and dreamy and their heart is so full that it bursts with Love for all Creation – everything reverts to its pure and pristine state of Being.'

And Jupiter, the Planet which assists our expansion of consciousness, is on Gene Key 17, evolving through the Shadow of **Opinion** to the Gift of **Far Sightedness** and ultimately to **Omniscience**.



'The 17th Shadow governs the way in which huge numbers of people view the world. On a collective level, this Shadow has created the world we see around us today. It has categorised humanity into boxes, countries, religions and hierarchies based on a left-brain view of the world.'

'Almost every aspect of our society is based upon division, comparison and Opinion. Most human beings make decisions on the strength of what the left brains tells them, without regard for the long term effects on the greater environment. It is because of this 17th Shadow that we have lost sight of the bigger picture.'

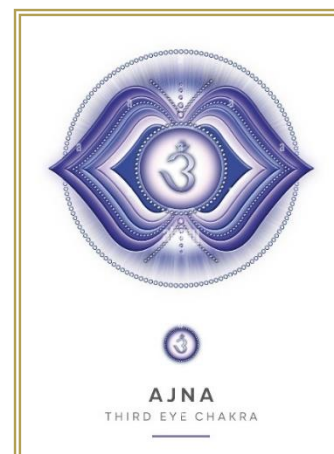
'It is only when you have transcended your fear of freedom that you can move beyond the Opinion game and enter a higher sphere of existence. Moreover, to move beyond Opinion you have to stop taking life seriously and personally. For most people the 17th Gift seems beyond their capacity, because to give up your viewpoint is to give up the deep-seated need of your mind to identify with something fixed. Your mind believes that in finding a fixed view or philosophy fear can be held in check and life will be under control.'

*'This Gift has a purpose and that is to understand the minute mechanics of life as well as seeing the whole picture. The true purpose of the 17th Gift is to uphold integrity, by challenging all misrepresentations of truth in the world. **The very quality that leads to narrowmindedness at the Shadow frequency has a mission to create open-mindedness at the Gift frequency.'***

*'Once freed from the Shadow frequencies of mass consciousness the 17th Gift has the ability to see higher dimensions and realities - looking ahead to the future and linking one phase of evolution to another. **It is working with the Gift frequency that the process known as the opening of the third eye begins.'***

*'Through the 17th Siddhi of Omniscience the human mind will finally see the perfection and beauty of our oneness with all of existence, for the 17th Siddhi directly corresponds to the open third eye. Where seeing and the seen are one. **A single eye through which consciousness pours and where past present and future are a single eternal screen of consciousness. These are the true seers and oracles.** At the level of the 17th Siddhi consciousness sees through you rather than you seeing through it. When the 17th Siddhi comes into the world it comes like a Divine afterthought.'*

*'**It is one of the seven powers of Grace.** It is where the body becomes an instrument for consciousness and there are no borders, levels, opinions or past lives, for the Siddhic level sees an endless fractal pattern of life – repeating over and over – the same but always new – the serpent eating its own tail.'*



*'**This 17th Siddhi is something of an anomaly, since it is the only aspect of the mind to survive awakening.** All other aspects of the mind are transmuted into the higher frequencies with the exception of this single eye – the mind's eye. The deepest irony of all life is caught in one famous mystic's words: 'God can only come and visit you when you aren't there' or put another way, **if you want to know what Omniscience looks like, you, the personality, have to cease to exist.'***

Before looking at the Kite formation you will see that Eris and Mars are together making a 90° angle to Pluto – which in and of itself is adding to the crucible and to the Stress levels within the collective field. For Eris Mars and Pluto together bring all that is dysfunctional to the surface – Pluto in Capricorn is shaking the institutions and establishment structures at their foundations whilst Eris and Mars in Aries reinforce the rights of the individual.

This can play out at many levels of consciousness, but all of the outer upheaval that we are witnessing is working to catalyse inner change so that more and more individuals will awaken to the Sovereignty of the Self. With all of the disruption that is occurring in the outer world, more and more individuals are turning within to find inner Peace and Truth and this is fast tracking an inner revolution and rebirth.



This stirring up of the collective Consciousness via Eris and Pluto has been ongoing since 2020 and will continue to play out through to 2028. If we are to expand our Consciousness into a Galactic awareness, where both Pluto and Eris reside, then the great potential that arises out of this dissolution and instability is that we will finally learn to stop projecting blame and anger onto others, taking full responsibility for what we are adding into the collective field. To witness all that is occurring, to hold a vision, to discern a future path is one thing, but to become emotionally entangled in argument and division, is another.

Turning now to the Kite Formation and looking to the South Nodal point first, as this links us to the ancestral karmic patterns that are playing out across the collective and are seeking to be integrated and raised into their highest expression.

We find that as for the last several weeks, the South Node, remains on Gene Key 43 known as **Breakthrough**, which has **Epiphany** at the Siddhic level, evolving out of the Shadow of **Deafness** and the Gift of **Insight**.

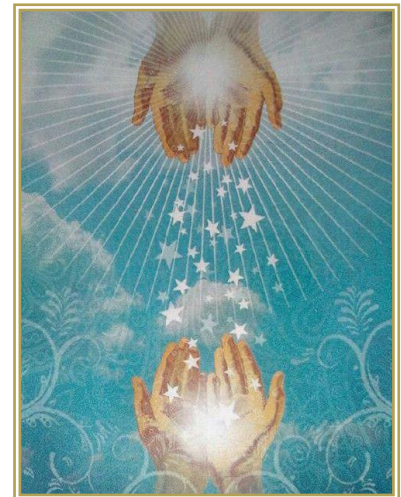
'At the Shadow level you are always operating out of your genetic survival mode, which is keyed into the frequency of fear. At the Gift level you enter into service mode in which a transformation has taken place inside that enable you to operate for efficiently with the whole.'

'Without the spontaneous, the unexpected, we could not evolve. The rebel awakening through the 43rd Gift is immensely creative – he or she simply cuts a new pathway without worrying about where it is going. It is only when you trust your inner core that the breakthrough comes from deep within your cells. In this way your awareness turns inward without losing any of its worldliness, making you unique but integrated, profound yet accessible.'

'As the human rebellious spirit comes alive your DNA attunes to higher and more refined frequencies. The 43rd and 34th Gene Keys are bonded in the 'Ring of Destiny'. The secret of this codon ring is timing and through the ages it has whispered a great truth into the ears of those whose insight is developed enough to hear it – life is a mystery in which chance and love dance together. When you Love totally, unconditionally, even chance is shown to be an illusion and the underlying Cosmic geometry is revealed behind all things. It is only then that your timing becomes perfect and that which appears to be random is understood as an aspect of the holographic Universe unfolding its myth through your Life. The 43rd Siddhi is one of the seven Gene Keys that provides a portal for Grace to move into the world of form.'

At the time of the New Moon, Juno which embodies the archetype of the Sacred Marriage - the Mind and Heart aligned in Soul awareness, is on Gene Key 22 which speaks of **Grace under Pressure**

'When true Grace descends it wipes out all your past karma in a flash. It also wipes out the Karma of all your ancestors and all their ancestors. Grace softens and puts an end to fear and leaves you in no doubt about your Divinity. If Grace touches you, you no longer have your own destiny but become a musical instrument played by the Cosmos. With Grace all human emotion is instantly transformed into Love. As a feminine spirit, Grace calls upon each of us to listen and receive her message and blessings. Above all, remember this: through Grace, the Universe has but one single wish – for you to remember that you are Love and there is nothing in you but Love.'



Neptune, is a transpersonal planet, and is the higher octave of Venus linking into the Higher Heart, to Unconditional Love and to Grace. Neptune is on Gene Key 36 known as **Becoming Human** having **Compassion** as its highest resonance arising through **Humanity's** journey through the Shadow of **Turbulence**.

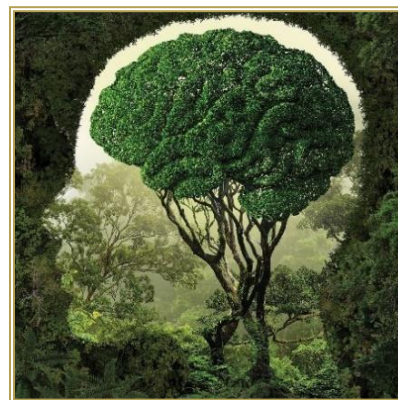
'Each Shadow provides a mythic challenge for humanity to move through. The 36th Shadow is an emotional battle that must be fought by every individual at certain times during their life. The 36th Shadow is the Dark Night of the Soul.... The potential suffering that exists on account of this Gene Key, is part of a genetic family known as the Ring of Divinity.'

'This is a beautiful revelation, as each of the four Shadows of the Ring of Divinity, Dishonour GK22, Turbulence GK36, Weakness GK37 and Doubt GK63, has the potential to awaken the highest consciousness inside you. This codon group in many respects is deeply connected to the true meaning of Christ Consciousness.'

Dwarf planet Ceres, whose archetype links to Virgo and the grain harvest, is on Gene Key 53 **Evolving beyond Evolution** having **Immaturity** at the Shadow level, **Expansion** at the Gift level and **Ascension** at the Siddhic level.

*'The Shadow of Immaturity is rooted in the human tendency to see ourselves as separate from each other and Nature. **The human mind has enormous difficulty seeing itself as a collective organism that is deeply embedded in Nature and the Earth.***

*'Gene Key 53 really does represent the driving force of evolution as consciousness burrows deeper and deeper into the material life. From the point of view of the 53rd Gift all that exists in life is the perpetual impulse to expand. **The Gift of Expansion demands that individuals transcend their personal opinions, views and attempts to understand what is going on.***



'It takes enormous trust to allow your life to truly expand because it appears to the mind to become more complex, whereas in fact it is moving into greater synthesis.'

*'To one who has awakened through the eyes of the 53rd Siddhi humankind is both a Being and a Becoming. **The form endlessly evolves awareness and expands, but the Consciousness never changes.** And here we humans have made a basic error – we have identified with the instrument of our awareness, which expands according to the Laws of Evolution.'*

*'We are indeed entering a new evolutionary phase right now in which human awareness seems ready to make a great quantum leap in terms of its expansion, but even though awareness may expand, **Consciousness does not expand since it is already everywhere and everything and even everywhen.***

*'This is the crucial truth to understand. Beneath the form, Consciousness never changes or evolves or expands or contracts. **It simply is.** The 53rd Siddhi represents the state beyond and behind awareness known as Pure Consciousness.'*

Now turning to the North Node and Uranus, which are at the apex of the Kite Formation. The North Node is our Spiritual pathway and Uranus, which is also a transpersonal planet, speaks more to the collective, but also to the individual Soul at this time.

The North Node is on Gene Key 23, as it has been for the last few months, known as the **Alchemy of Simplicity** moving from the Shadow of **Complexity** to the Gift of **Simplicity** to the Siddhi of **Quintessence**.

'The 23rd Shadow directly concerns the connection between thinking, knowing and the expression of that knowing through Language.'

Mercury is the Planet that develops our linguistic ability. It is the planet that begins our journey of individuality, at around a year to a year and a half, as we learn, as children, through language how to name, identify and separate 'ourselves' from 'others'.



You will see from this image of Mercury, that we need to express our thoughts when the physical being (*The Cross of Matter*), Spirit/Consciousness (*The Circle*) and the Soul (*The Half Circle*) are in alignment, as our language flows directly out of our state of consciousness. When aligned we have the potential to refine, purify and enlighten the group collective consciousness that has been misaligned for eons of time.

*'The 23rd Siddhi has an alchemical flavour to it – the ability to extract gold from base metal. Every person has a unique key that opens them to a higher state of consciousness and the people of this Siddhi hold all the keys. **They can transmit the power of the awakened state through a word or a look or a gesture.** This is the true explanation of the secrets hinted at by Alchemy – that the physical body itself contains the seed of the Siddhic consciousness. **It is concealed in your DNA and controlled by a hidden timing mechanism that is utterly spontaneous and out of your individual reach.** Once this Siddhi has fully dawned inside a person they become an alchemical agent that overtime refines all and extracts the Quintessence from the dross.'*

And finally, Uranus, which is the higher octave of Mercury, is on Gene Key 2 known as **Returning to the One** moving from the Shadow of **Dislocation** to the Gift of **Orientation** to return to **Unity**.

'Of all the 64 Gene Keys, the 2nd Gene Key, and the journey it represents, contains a beautifully simple distillation of Cosmic wisdom. As the 1st Gene Key tells the story of the great masculine principle of energy and light, the 2nd Gene Key grounds this story into the world of form – it teaches us that there is a purpose to everything in existence.'

'At no point in evolution has anything ever occurred that was not a part of a huge interconnected plan. This is the truth that resides within the feminine principle – it is the binding force for all the seemingly disparate cells and events within existence and in this sense it represents the great motherly embrace that pulls us all into a single Unity.'



'Your personal resonance to this great Truth of our Unity determines the overall frequency passing through your DNA. Whether you believe it, deny it, wish for it or embody it, the Truth does not change. There is a force within the Universe that choreographs everything and it is found right inside you.'

'At the Shadow frequency you experience Disorientation, whereas as you begin to reach into the Gift dimension, you become re-orientated. The Gift of Orientation either comes as a shift in your awareness that affects your actions, or it comes as a shift in your actions which then catalyses a shift in your awareness. Whichever path is taken there is an increased realisation of synchronicity occurring in your life. Evolution itself is drawing you inexorably along the path towards awareness of your Unity and Oneness.'

'The 2nd Gift has a special role within the DNA in that it creates an 'attractor field' around you. As the frequency through the 2nd Gift rises you live more harmoniously and the electromagnetic power of your aura increases. As you let go into the feminine yielding quality of this Gift, the more Universal power flows through you. As your awareness begins to operate at its highest biological level – through the solar plexus system – so you fall into an easier rhythm of life.'

'The magnetic attractor field around a person who is centred in the 2nd Gift exerts a powerful effect on all those around it, meaning that harmony is catching. This is why people who are deeply surrendered and attuned to life's processes can be so empowering. Over time such people bring others into their own personal harmony through the magnetic power of their aura.'



When you know the Oneness of Life
when you realise the Unity of Existence
there is Love in your Heart
and the Divine in your Experience

Sadhguru

'The 2nd Siddhi describes the state of enlightenment or awakening. It is the cornerstone of all the Siddhic states, being as it is the essence of the Divine Feminine. As do all the Siddhis, the 2nd Siddhi carries a specific mythology when it manifests through an individual into the world of form. As one of the primary pillars of our DNA the life of one who lives within this Siddhi is of great relevance to our evolutionary history. These beings exert an enormous magnetic influence on our entire planet.'

'If you see Oneness as an experience to be attained or that may one day happen to you, then you are caught within a trap – enlightenment does not occur to you – rather it negates you. Ironically, transcendence does not take you away from life, as its name might suggest – it places you right in the heart of life, where you have always been.'

'Oneness cannot be comprehended, only lived - it is the unification of all opposites, this cannot be described, only experienced. It is the original nature of Consciousness itself. A highly beautiful plan unfolding in time and space, swept along by currents of evolution.'

'This is our final destiny as a species - to realize our state of Oneness and Unity with All That Is.'

At the time of this New Moon, as we continue to witness the Shadows of Dislocation and Turbulence in the outer world may we enter into **Stillness** and **Far-Sightedness** which, through **Grace**, will create a **Breakthrough** on the Collective Consciousness to **Simplify** life on this Plane so that we are consciously held within a **Unified** field of **Compassion** for All Life.

Love and Blessings to All

26.6.2022

Extracts from Richard Rudd Gene Keys