

Cosmic Overview

Sagittarius New Moon 2022

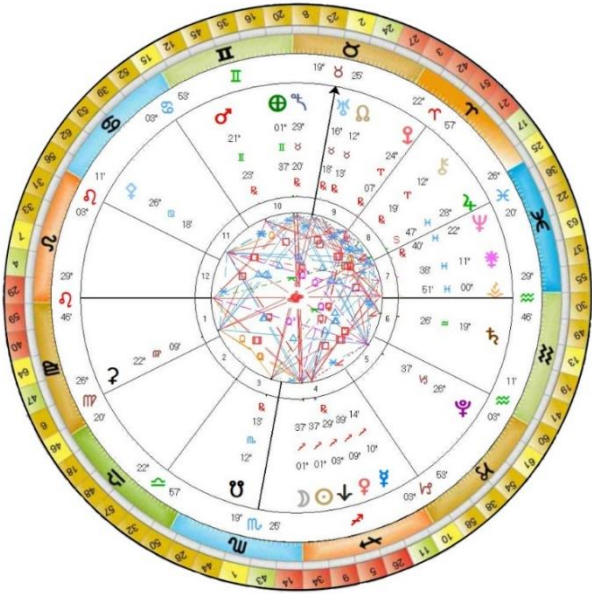


*Through Consciousness, our minds have the power to
change our planet and ourselves.*

*It is time we heed the Wisdom of the ancient indigenous
people and channel our consciousness and Spirit to tend
the garden and not destroy it.*

Bruce Lipton

'I AM' a Directed Focused Light



The New Moon will take place at 1° Sagittarius 37' on the 23rd or 24th of November depending upon where you live. This New Moon follows on from the Scorpio New Moon Solar Eclipse on 25th October and the Total Lunar Eclipse on the 8th of November.

To briefly recap, *'It is in Scorpio that the Fixed Water Element, that underpins our emotional response, can become stuck within the psyche – all the dramas that result from this intensification of emotional patterning is how karma is created, and recycled, not just in this present life, but over generations and generations of lifetimes.'*

This New Moon in Sagittarius brings an overview and an expansion of Consciousness, allowing for Truth to emerge from the many karmic shadow patterns that are awaiting the Light of day, clarification and release.

The Sagittarian Constellation flows with the 4th 5th and 6th Rays and as such links closely to the human struggle that each individual must pass through to release themselves from the limitation of the personality, when the emotional desire nature is dominant.

Sagittarius is a Mutable Fire Sign, which suggests passion, flexibility, and a chameleon like personality, that can blend and fit in with all and yet it is in this Constellation that the individual is being guided to bring, this often, unconscious, scattered energy into a fixed focus, to become one pointed as symbolised by the archer's arrow.

The Sagittarian carries the greatest number of Rays, of all of the Zodiacal Signs, to embody, for along with the 4th *Harmony Through Conflict*, the 5th *Concrete Knowledge*, and the 6th *Devotion and Idealism*, which impulse through the Constellation, Jupiter, which is the planetary ruler of Sagittarius, is on the 2nd Ray of *Love and Wisdom* and, at the Soul Level, the Earth is the planetary ruler of Sagittarius on the 3rd Ray of *Active Intelligence*. Five separate Rays all seeking a focal point and direction.

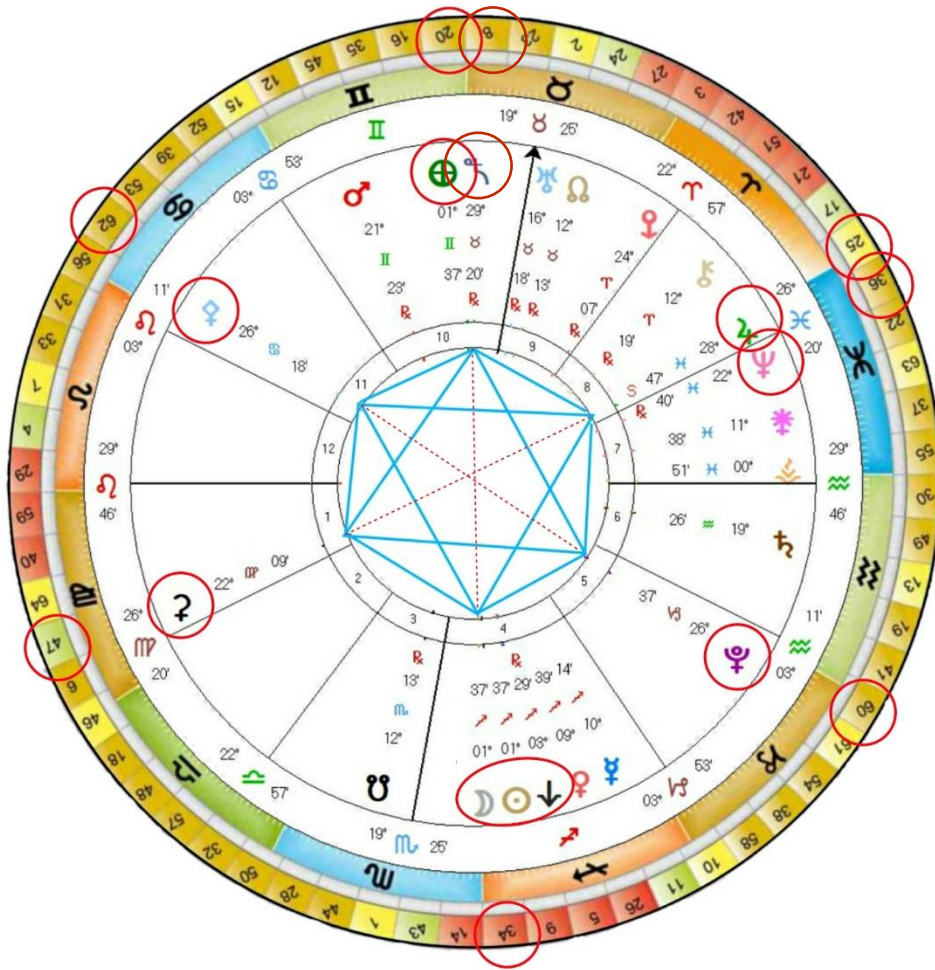


Sagittarius informs and trains the individual on the right use of mental energy so that the Higher Mind is developed and the individual becomes sensitive to the intuitive perceptions of Truth. Having passed through many tests, ultimately the Soul merges completely with the Higher Mind, no longer held within the collective unconscious, but irradiated by the Light of Understanding and Wisdom in service to Humanity. In essence, at its height, Sagittarius embodies Truth, Justice and a nobility of Purpose. This is the pathway of the visionary Teacher, who shares the Wisdom gained with all, encouraging all on their own pathways to awakening.

No one can hit the target with their eyes closed.

Paolo Coehlo

Chart for the Sagittarius New Moon



New Moon 23rd November 2022 22:57 GMT London UK
<https://www.timeanddate.com/moon/phases/>

As you will see, at the time of this New Moon there is a Six Pointed Star formed by the Sun and Moon, opposite to the Earth and Sedna, Pluto opposite to Pallas Athena and Neptune and Jupiter opposite to Ceres. Apart from Pluto and Pallas Athena all of these planetary energies of the Six Pointed Star are in the Mutable Signs of Sagittarius, Pisces, Gemini and Virgo, which would seem to indicate that we have the potential to move into a more flexible and adaptable period after a time of such control.

Rather than seeing everything as black and white, right or wrong, which has been so strongly emphasised by mainstream and social media over these last many months, keeping us rooted in a constant state of mental disagreement, there is room for consensus amongst the general population, where we might find higher common ground that is based on Openness, Discernment and Truth.

At this moment in time, the Sun and Moon are on GK 34 moving through the Shadow of **Force** to the Gift of **Strength** to the Siddhi of **Majesty**.

'Under the influence of this Shadow you become totally deaf to the force that is moving through you even though it may be harmful to you or others. Force is always rooted in the mind whereas power comes from the sacral plexus – the belly. Power is natural, grounded and universally connected to all life, whereas Force happens when you forget to trust in this true centre of pure awareness.'

‘When the 34th Shadow gives way to the 34th Gift a truly beautiful archetype emerges – human strength. What is fascinating about the connection between the Shadow and the Gift is the incredibly fine line between these two activations of the same essential energy code. The Gift employs the same terrific primal vitality, but unlike the Shadow it does so through appropriate activities and correct timing. **The result is a creative manifestation of aligned Life Force.** There is a kind of primal power at work within such people and it is impossible for others to miss it. **True inner Strength never goes unnoticed.’**



‘The 34th Siddhi, in actuality, concerns humanity more than any other aspect in human DNA – it is the Siddhi, of the Divine energy that constantly moves through the human form. When life is not interfered with in any way, it becomes highly fluid and efficient.’

*‘Here in the 34th Siddhi, at its peak, the Siddhi of Majesty blossoms. This is the Majesty of the human form in motion and the form itself is pure awareness, which is why it cannot be awareness of something. **It is through the 34th Siddhi that we get the idea of man as a God.** The great paradox is that if Gods were to assume the shape of humans they would never know they were Gods. This is the true meaning of this 34th Siddhi - the Divine Essence of creation can only move freely through the body when the identity has ceased to exist.’*

‘Once you have entered the Siddhic frequency all fear is purged from your system and the pure awareness of your body’s physical intelligence is revealed. It is as though the entire Universe were moving through your body. In the Ring of Destiny, the epiphany of the Higher Planes encounters and infuses the Majesty of the body on the lower planes. **The result is pure fusion as Spirit enters Matter and imbues it with Divinity.’**

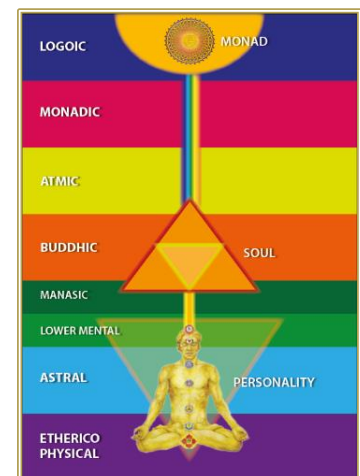
The Earth opposite to the Sun and Moon is on Gene Key 20 known as **The Sacred Om** has **Superficiality** as the Shadow, **Self-Assurance** as the Gift and **Presence** at the Siddhi level.

‘The 20th Shadow concerns how deeply consciousness incarnates into a human form. In the case of the 20th Shadow very little consciousness can express itself at all, so that we see a very watered down reflection of life’s real potential coming through human beings operating at this frequency.’

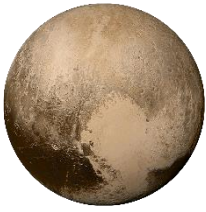
‘The Gift of Self-Assurance comes into being when a human being first learns to let go of their thinking as the authority in making decisions. With Self-Assurance comes a profound surrender to life in every moment. As you begin to accept that life has its own plans and flow, you begin to stop interfering with the process at a mental level. **Self-Assurance marks the end of the human tendency to worry about life.** In its purest sense, the state of Self-Assurance is actually your own greater nature emerging. It is a sign that more consciousness is being allowed to incarnate into the physical vehicle. **Your Self-Assurance is directly equivalent to your ability to escape being a victim of your mind.’**

*‘The 20th Siddhi is represented by the notion of the Breath of God, or the Word of God. **Presence is the underlying nature of Being.** In fact, it would actually be truer to name this Siddhi, The Presence, since it has nothing to do with the individual. **It is the manifestation of The Presence through a human vehicle.** The true Siddhic state is one of complete relaxation. When this Siddhi has flowered in a person it creates a subtle atmosphere around itself – a kind of silent ease that pervades the aura of the person and radiates out to all Creation.*

‘This Siddhi also relates to the Eighth Plane of Reality, the true ground of our Divinity, known as the Logaic Plane.’



Moving to Pluto, the planet of Transformation, we find that it is on Gene Key 60 known as **The Cracking of the Vessel** having the Shadow of **Limitation**, the Gift of **Realism** and the Siddhi of **Justice**.



'This Shadow represents one of the most potent forces responsible for pulling humankind in the opposite direction of evolution. This is the Shadow that fears the new, the innovative and the original. It is the counterweight of Life itself – it shuts down life receiving faculties, essentially pulling life into ever tighter patterns over the course of time. Wherever and whenever people remain stuck because of an outdated mindset, the 60th Shadow is at work.'

'Another synonym for the 60th Gift, might be the Gift of Common Sense. It is through common sense that we human beings evolve and co-operate with creation efficiently and harmoniously. People with the 60th Gift are very sought out in the world and for one main reason – they understand the limitations of the world of form and therefore know the laws of manifesting within the world of form. People with the 60th Gift understand that for anything new to take root in the material world it must follow certain laws.'

'It is the responsibility and great privilege of humanity to be the outer most peak of the awareness of Gaia. We are her eyes and ears. We are her very mind. Everything of true value is hidden inside form – inside your body, inside the core of the planet, inside the vibrating fabric of your inner being. It is all rooted inwardly. This is why humankind must discover inner space, why we must turn inward for inspiration. All the answers to all our problems and challenges are hidden in the creatures and structures of nature and all of those structures and creatures are embedded in microcosmic form inside every molecule of our DNA.'

'The 60th Siddhi is an extremely rare Siddhi. When a Being attains self-realisation through the 60th Siddhi, something quite extraordinary happens, the fundamental laws that govern physical existence are loosened and in some cases broken altogether. At a collective genetic level this kind of event is called a frameshift mutation. The 60th Siddhi breaks all laws of our reality – beginning with the Laws of Time and Gravity.'



'There is an enormous magic hidden within the 60th Gene Key. Every time a being attains enlightenment through the 60th Siddhi, magic comes pouring through this being and they become a phenomenon, a symbol of the breaking of form – Masters who have attained the Body of Light. At a collective level the 60th Siddhi will be one of the very last Siddhis to dawn but as the 60th Siddhi begins to ignite in multiple beings it will be the ending of the world as we know it. The laws that hold together the Earth will crack and our planet will begin to transmute. The 60th Siddhi has been known by certain esoteric schools as the Merkaba, or Chariot of Light. The true collective merkaba is the Earth herself, the Spirit of Gaia and the Souls who hold this Gene Key hold the key to this ultimate magical experience.'

Pallas Athena opposite to Pluto at this time is on Gene Key 62 known as the **Language of Light** which moves through the Shadow of **Intellect** to the Gift of **Precision** to the Siddhi of **Impeccability**.



'Intellect is a wonderful quality if it is used correctly in the service of innate intelligence. Your intelligence is stunning, vibrant and natural Your natural intelligence is to be found in the way you move your limbs, in the brightness of your eyes and in the freedom of your self-expression. Intelligence is of the Heart, whereas intellect is of the mind.'

*'The 62 Gift of Precision is far beyond the realm of the Intellect, which is based on mere knowledge. **Precision happens when natural intelligence strikes a balance between the heart and the mind, but with one caveat, that the heart, the feminine principle, is given control over life.** The masculine principle, the intellect, then moves into service of the feminine principle, which is about intuition, listening and receiving rather than thinking, expressing and transmitting.'*

*'The 62nd Gene Key is genetically coupled with the 31st Gene Key forming the Codon known as the Ring of No Return. This mystical name describes the evolutionary process that takes place when higher consciousness reaches the throat centre. **The throat centre is where the greatest human initiation occurs.** Once the higher involutions begin to use our voice to transmit their truths, you begin a process of detaching from your own identity.'*

*'The 62nd Gene Key allows access to the **Universal Language of Light behind all forms.** There is a deep magic woven into language – words become much more precise - as your language becomes purer you expose your heart to the world.' Words spoken from Love are deeply healing. **This is why there is no return once you begin to speak your truth – you have broken away from the lower realms forevermore.'***

*'The word Impeccable is often misunderstood when used in reference to true Masters. The most common mistake we make is to believe that one who manifests the Siddhi state must now behave in some kind of holy way. **However, Impeccability, simply means exempt from doing sin.** Pure consciousness is at play within the being, so whatever they say or do is beyond reproach. **All ego has left the vehicle.** The 62nd Siddhi concerns the use of language at a level beyond our ken. Every word has its frequency and vibration and the order and tone of your diction creates a certain aura. **At the Siddhic level words do not come via the mind anymore – they are not thoughts that become words. They emerge directly from the void, naked and pure.'***



*'There is a Cosmometry behind life that choreographs all actions. The closer you come to full awakening the more harmoniously your life flows within this Cosmometry. When you finally merge into the ocean of consciousness you achieve complete oneness with the Divine. Divine Cosmometry is the language of perfection. **It is the manifestation of Impeccability in which your every movement and breath becomes an emanation of the Pure Light.** You have entered into the Language of Light – the Impeccable Beauty of Being.'*

And Dwarf Planet Ceres is on Gene Key 47 opposite to Jupiter and Neptune. Gene Key 47 known as **Transmuting the Past** leads us through the Shadow of **Oppression** to the Gift of **Transmutation** to the Siddhi of **Transfiguration**.

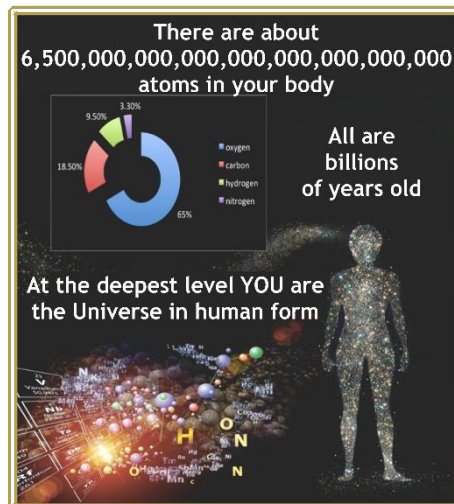
*'The 47th Shadow is the storehouse of human karma. What we term as karma really refers to memory, but not memory as we commonly understand the term. **This is genetic memory carried in our blood from our ancestral lineage.** In genetics the 47th Shadow refers to what is called non-coding DNA or 'junk' DNA. The fact is that every human being carries the entire evolutionary memory of humanity within their body and is unconsciously driven by this memory.'*

***When a human being faces his or her own Shadows, they open the door to the process of Transmutation.** The alchemical process of Transmutation consists of an endless series of small mutations leading to a finite number of transmutations. These Transmutations are huge turning points in your life.'*

'To transmute is to make a quantum leap into a whole new dimension.'

*'The 47th Siddhi reveals the ultimate purpose of the non-coding DNA within the body, which actually does code for a process within the physical body. **The Life of Jesus Christ is in fact the perfect mythic enactment of all the stages of alchemical transmutation ending in this state of Transfiguration.** The force of Transmutation strips you emotionally and mentally to such an extent that it eventually reaches down into the physical matter of your body. The power of the myth then takes over and the very cells of your body begin to transmute into the pure light frequencies from which they are made.'*

*'The elements that make up your body were made in stars and you turn back into a star in your own mini supernova. This is the Unio Mystica or sacred marriage in which all your constituent elements dissolve back into one another and out of your base matter symbolic gold is formed. Humanity stands upon the threshold of one of its great Transmutations. **As a species we are moving through the symbolic time of our crucifixion and crucifixion precedes Transfiguration.** Our crucifixion means everything that is old must leave the world as a new Light emerges. **As each individual faces, embraces and transmutes the collective fear that lies within the heart of every human's DNA we are Transfigured by Divine Grace – accessing the Divinity that lies within each and every one of us.'***



Over countless lifetimes and eons of time we have created and inherited the Shadow group consciousness – passing fear on from one generation to another – until the Shadow is transformed, both individually and collectively.

It is within the 36th Gene Key that much of this accumulated distortion is held. Known as **Becoming Human** it holds the Shadow of **Turbulence** the Gift of **Humanity** and the Siddhi of **Compassion**.

*'The 64 Gene Key Shadows provide the grist for the mill of all human suffering. Each Shadow provides a mythic challenge for humanity to move through. The 36th Shadow is an emotional battle that must be fought by every individual at certain times during their life. **The 36th Shadow is the Dark Night of the Soul.'***

*'Nowhere does the 36th Shadow wreak more destruction than in the field of human relationships. At a low level of frequency, the 36th Shadow manifests most strongly through our sexuality where it becomes sexual lust. **The potential suffering that exists on account of this Gene Key, is part of a genetic family known as the Ring of Divinity.'***

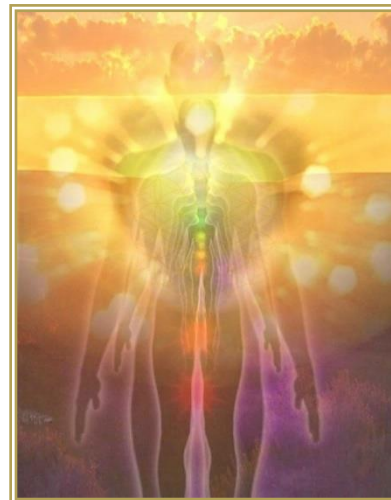


*'This is a beautiful revelation, as each of the four Shadows of the Ring of Divinity, Dishonour GK22, Turbulence GK36, Weakness GK37 and Doubt GK63, has the potential to awaken the highest Consciousness inside you. **This codon group in many respects is deeply connected to the true meaning of Christ Consciousness.'***

'When your struggles with sexuality and emotional turbulence are finally embraced openly and honestly, a remarkable Gift is born – you finally graduate as a human being! The Gift of Humanity truly understands emotions and consequently understands all people. This is a Gift that can only be earned.'

'At this level these people are no longer overwhelmed by emotions as they tend to be at the Shadow level but have opened and expanded themselves to life through harsh experience.'

'As a living transmission the 36th Gift carries a great teaching into the world – the Celebration of Humanity. This Gift contains a natural spirituality – it is one of the most grounded of all the Gene Keys. It is a bridge for the higher bodies of humanity to move down into the lower planes and transform them. The deepest role of the 36th Gene Key is to help humans to become humane - it is their courage and deep acceptance of the life process that eventually gives rise to the highest of human expressions – the expression of Compassion.'

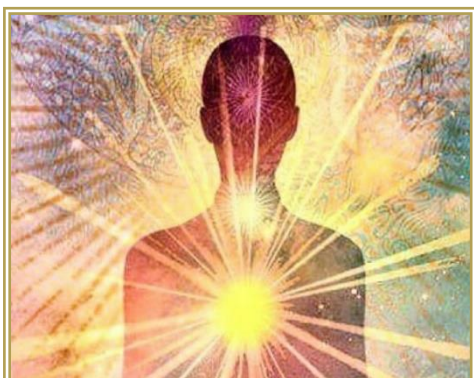


'This is the Siddhi that spans the chasm between Man and God, between being a victim and being enlightened. In every mythic journey there must always be a final trial. A moment of utter hopelessness and helplessness – these moments – these Darkenings of the Light – come to us in life not so much to test us, but to cut us so deeply within our own humanity that we are reminded of the awesome power of our own Compassion for all beings.'

'Those in whom this Siddhi has awakened tend to keep moving into those areas of life where the light is most darkened. The simple presence of such people and the look in their eyes can trigger all manner of so-called miracles in those whom they meet. Wherever they go, the true frequency latent within human suffering is immediately released and Compassion tears open people's chests and explodes inside their hearts. At the Siddhic level your own suffering becomes so universalised that it encompasses all humanity. All boundaries of the self dissolve.'

Jupiter, is playing a pivotal part at the time of this new Moon, as it is the Planetary Ruler of Sagittarius and is currently Stationary, which gives this Gene Key an extra focus. Jupiter expands our consciousness allowing for the lower mind to come into higher awareness where we can perceive that, at all times, the Cosmos is working on our behalf, reminding us that we are all held within a field of pure Source Light and Love.

Jupiter is on Gene Key 25, known as **The Myth of the Sacred Wound** and here we are being assisted to move through the Shadow of **Constriction** to the Gift of **Acceptance** to the Siddhi of **Universal Love**.



Surrender means accepting this moment this body, this life with open arms. Surrender involves getting out of your way and living in accord with a Higher Will

'If there is a single Gene Key among the 64 Gene Keys that captures the essence of the entire work, it is this 25th Gene Key. Within the 25th Gene Key lies the secret that men and women have always sought – the secret of love. Here too lies the antithesis of love, the Shadow of Constriction. Constriction exists wherever love is absent and it is the underlying source of all human suffering. Here in the 25th Gift we arrive at one of the greatest and most powerful of all human Gifts, the Gift of Acceptance. Because this 25th Gift represents the portal to the true nature of the Universe as Love, it has incredible relevance for all human beings. The flowering of Love follows the burgeoning of Acceptance.'

For Sedna you can see this configuration too, but here it appears that the Spiritual Essence that has been created and gathered over the last 11,400 years, from all of our thoughts and feelings, is being returned through the physical form (the Cross of Matter) to be anchored by the Soul embodied Being for the next 11,000 year cycle. This is a time of Transmutation, a time of sorting through the Group Consciousness Shadow for the Light that resides within.

Sedna is on Gene Key 8 ***The Diamond of the Self*** moving from ***Mediocrity*** to ***Style*** to ***Exquisiteness***

*'The 8th Shadow like all of the Shadows is founded upon a specific fear and in this case it is the fear of being different. The 8th Shadow prevents individuals from rising out of the mass consciousness and exploring the real adventure of Life. **Mediocrity is defined by others rather than by yourself and Mediocrity has two main functions.** Firstly, it stops you from thinking outside of the box. The second function of Mediocrity is to serve the machinery of society rather than evolution. In other words you become a cog in the wheel of the systems established by man.'*

#True Style takes great joy in shattering the grey world of mediocrity that is considered the norm. Where Style is more than skin deep, it is the cutting edge of creation itself. The individual surrenders the self to a creative process that controls the individual rather than the individual controlling the process - it carries intent from a higher realm that is far beyond the individual through whom it manifests. ***Their only concern is to free more free thinkers – thus such people inherit a powerful mission in the world.'***

*'The 8th Siddhi of Exquisiteness is the natural revelation and manifestation of all the Siddhic states. **People of the 8th Siddhi are not leaders. They are examples.** Exquisiteness is experienced when the Divine Essence begins to shine through the individual. **This is the stage at which you achieve transcendence of your genetics.** There is an inner Light and Wisdom that has a powerful and liberating effect on others, freeing them from the structured systems. They sparkle like exquisite rare jewels. **They shine like a diamond in the heart of creation and wherever they look, they see other diamonds in various states of clarity – each one unique, each one exquisite and incomparable.'***



May we each hold Compassion for All as we pass through this on going anchoring of Universal Love for the Transformation of Humanity and the Elemental Kingdoms.

Love and Blessings to All

22.11.2022

Extracts from Gene Keys by Richard Rudd