

Cosmic Overview

Scorpio New Moon 2025



*'The Earth was small, light blue,
and so touchingly alone...'*

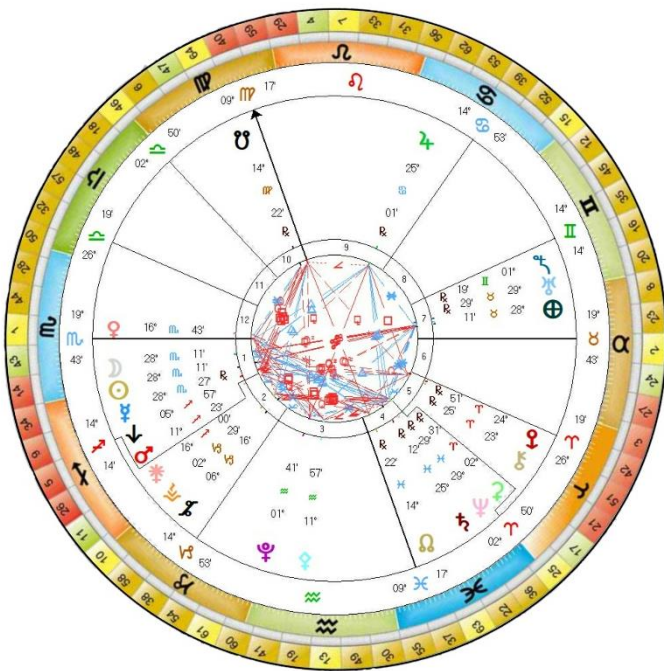
Alexis Leonov Russian Cosmonaut

*'You carry Mother Earth within you
She is not outside of you.
Mother Earth is not just your environment.*

*In that insight of inter-being it is possible to
have real Communication with the Earth
which is the highest form of Prayer.'*

Thich Nhat Hanh

'I AM' The Light of Day Where Three Lights Meet



The New Moon in Scorpio will take place on the 19th or 20th of November, depending on where you live.

Once again we are passing through the Light of the Constellation of Scorpio. It is in Scorpio that we confront the legacy of accrued collective and personal karma and this New Moon would seem to be the timing for a deep dive into the cleansing and realigning of these energetic misalignments, that have accrued over eons of time.

Pluto is the planetary ruler of Scorpio, and links to the archetypal energies of power, and also to transformation. Power can either control or create empowerment, and the underlying keys to these two very different worlds are *hidden agendas*, coming from separation and fear, or *openness and transparency*, arising from Love.

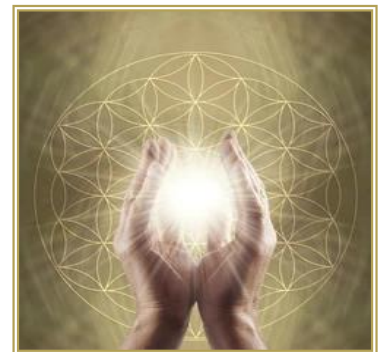
The Zodiacal Constellation of Scorpio, held within the **4th Ray of Harmony through Conflict**, fuels the impulse for change, transformation and regeneration. This is the Ray that assists humanity to grow beyond the ingrained patterns of the past.

For it is in Scorpio that the Fixed Water Element, that underpins our emotional responses, can become stuck within the psyche – all the dramas that result from this intensification of emotional patterning, held within the Astral Realm, the 4th Dimensional plane, is how karma is created - but both Pluto and Scorpio provide the focus, fortitude, and deep perception, to mine the unresolved, subconscious patterns that have been stored from other lifetimes.

Humanity's present evolution centres upon purifying and harmonizing the Fourth-Dimensional field. All the crises of emotion and ideology seen globally playing out across the Earth are not random — they are the necessary purification of the world's astral substance. This is the collective task that we are all currently evolving through on this precious, '*small, light blue, Planet*' called Home.

As the Group Collective emotions refine, the Fourth-Dimensional veil thins, revealing the subtler dimensions of unity and purpose behind physical life. As a species, we stand precisely at this crossing point.

The world's emotional imbalances and intensities represent the last vestiges of turbulence held in the Astral Field before it stabilizes under the Light of Soul awareness. The Fourth Dimension is the training ground, on Earth, for energy mastery. It teaches us to feel without distortion, to imagine without illusion, and to Love without possession.

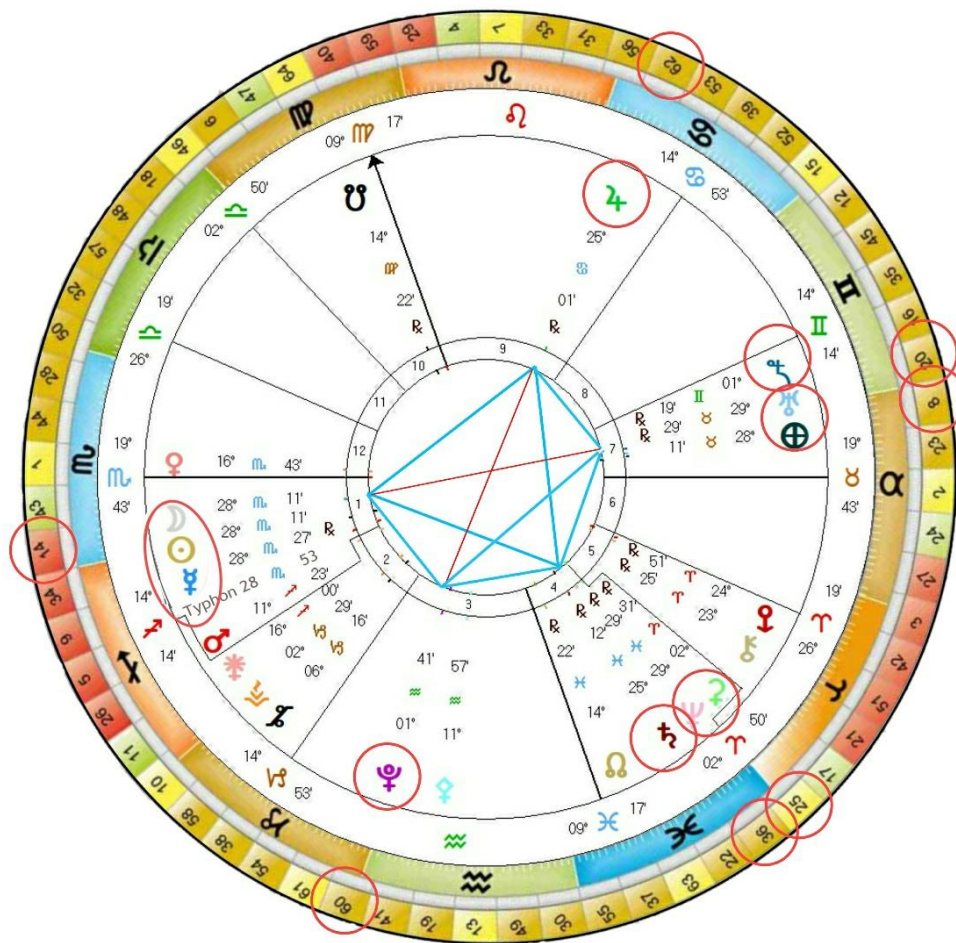


Love becomes a Field rather than an emotion, a Radiation that blesses without discrimination. A harmonic resonance that Unites with all Life. Groups and individuals that are attuned to heart coherence are forerunners, functioning as bridges, conducting 5th Dimensional frequencies into the Collective Consciousness that will continue to unfold through this Aquarian Age.

Suddenly there emerges a sparkling blue and white jewel. It takes more than a moment to fully realize this is the Earth ... our Home.

Edgar Mitchell Apollo 14 Astronaut

Chart for the Scorpio New Moon 2025



The New Moon 20th November 2025 06:46 am UT London UK

<https://www.timeanddate.com/moon/phases/>

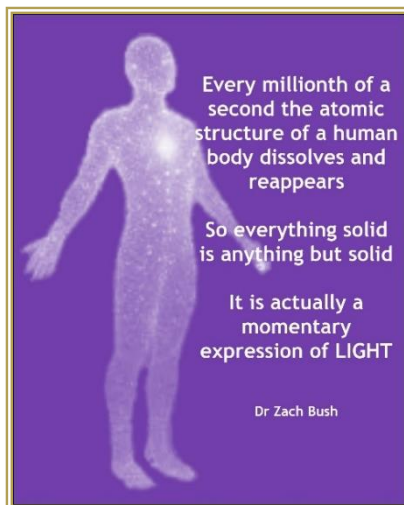
The energies continue to rise and looking at the chart above you can see that the Sun ☉ Moon ☾ Mercury ☿ and Typhon, a Trans Neptunian Cosmic body, are all together at 28° Scorpio 11' opposite to the Earth Uranus ♅ and Sedna ♁ which brings in a sense of unpredictability, change and realignment, which can manifest through a multitude of ways, including sudden breakthroughs, radical shifts in our emotional bodies and perceptions, seismic activity, as well as changes in the structures of our manmade world systems, including governments, the scientific community, and the media, financial, and tech worlds.

Equally, it is through our central nervous system that these energies of change are being experienced – Mercury ☿ links into our CNS which is presently going through intense activations as the Solar Light continues to intensify. So, time to balance, to slow down, to breathe deep, stay centred and to connect deeply with the Earth through nature and the Elemental Kingdoms.

The planetary pattern of the outer planets of Pluto ♇ Neptune ♆ Saturn ♄ Uranus, and Sedna ♁ remains the same as for last month. However, Pluto is in the final phase of activating Gene Key 60, which began in March 2021, before moving on to Gene Key 41, on the 5th of December, which it will finally leave in January 2029. As Pluto will not be activating Gene Key 60, for another 248 years, let us begin by looking at Gene Key 60 to see how it has been assisting and activating the transformation of misaligned energy.

Gene Key 60, known as **The Cracking of the Vessel**, moves through **Limitation** to **Realism** to **Justice**, connecting us into Galactic Consciousness, via the 1st Ray of Divine Will, bringing a powerfully transformative Plutonian focus to the key, as the energetic, impulse flows down through the Cosmos into the subtle etheric liquid Light of our DNA to open us to the full potentiality of all that we are.

'As we begin to see that we're more than we allow ourselves to often believe, then that frequency, that vibration of possibility, begins to activate something inside us. It is communicated to our DNA and we begin to open.'



*'There is great capacity for magic in this Gene Key which may sound odd as it is called the Gift of Realism. However, the only thing needed for magic to occur is some form of a structure and an open mind! **Common sense/Realism is not in opposition to magic.** It is common sense to remain open-minded to everything in the Universe because everything has at its core the same wondrous inner Light'*

*'Justice is not about retribution, it is a reward. It is given as Grace, not taken as punishment, and when it is given, freedom flows from it. **It is not an imposition or a limitation.** The 60th Siddhi holds an apt description of what happens when a human being becomes fully realised. **At a certain point, our hearts open to our true Innocence and we begin to unlock other codes in our DNA that are ancestral rather than personal and we begin to transmute more global karma.'***

*'Every time a being attains enlightenment through the 60th Siddhi, magic comes pouring through this Being and they become a phenomenon, a symbol of the breaking of form – **Masters who have attained the Body of Light.'***

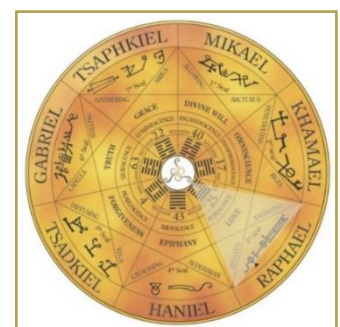
And, Neptune on Gene Key 25, is now joined by Ceres, the ancient Greek Goddess of the Earth, in the cleansing of the misaligned energetic patterns that are shrouding the Earth. Gene Key 25 known as the **Myth of the Sacred Wound**, moves through **Constriction to Acceptance** to the Siddhi of **Universal Love**.

'There are certain Gene Keys which occupy a central seat in the genetic code and story of evolution, and the 25th Gene Key is one of those. It is a hub Gene Key. Constriction exists wherever love is absent and it is the underlying source of all human suffering.

*'Pure fear is simply a collective thought form that hangs like a fog across the world. Constriction was felt by our ancestors as they struggled from their births to their deaths - **a Sacred Wound that is wound around the very helix of all human DNA.** As we learn to face our wounds our journey becomes clearer and easier- we begin to walk the path from fear to love, and through Acceptance, the wound begins to unwind and another higher destiny opens before us. **Because this 25th Gift represents the portal to the true nature of the Universe as Love, it has incredible relevance for all human beings.'***

*'Acceptance is based on taking the soft approach to life. In order to accept something about yourself, and especially something uncomfortable, it first must be recognised. **This kind of Acceptance takes place when you build up the courage to look into your own Shadow.** The only way to transform the Shadow is to have the courage to simply feel the fear.'*

*'The 25th Gift makes it difficult to hold any resentment, judgement or indeed worry about life – for now you are carrying the Seed of Love. You will walk through life with an air of another world about you, whilst at the same time being deeply grounded and open to others. **When you can finally accept everything in your life just as it is right now you will have embraced the human wound.** The 25th Gene Key is the primary archetype of Love. **The 25th Siddhi is Love itself as the Source of All, and in this sense, it can be called Universal Love.'***



*'The 25th Siddhi is also one of the Seven Sacred Seals a mystical group of Gene Keys whose collective role is to heal the Sacred Wound within humanity. **The 25th Gene Siddhi is the 3rd Seal, and it heals the human wound of shame.** Every time someone attains the 25th Siddhi a great genetic Constriction is removed throughout Humanity. **The bodies of these people have undergone a radical transformation in order to be the receiver or chalice for pure consciousness.'***



Saturn conjunct Neptune, as the planet of manifestation, has the potential to anchor the field of Neptunian Universal Love, through Gene Key 36, known as **Becoming Human** which moves through the Shadow of **Turbulence** to the Gift of **Humanity** to the Siddhi of **Compassion**.

*'Turbulence can be physical, emotional and mental. **More often than not it is all three.** When watching the news or listening to the media this is pretty much all we see, the turbulent collective field of our planetary Shadow frequency, however...'*

*'The potential suffering that exists on account of this Gene Key, is part of a genetic family known as the **Ring of Divinity**. This is a beautiful revelation, as each of the four Shadows of the Ring of Divinity, Dishonour GK22, Turbulence GK36, Weakness GK37 and Doubt GK63, has the potential to awaken the highest consciousness inside you. **This codon group in many respects is deeply connected to the true meaning of Christ Consciousness.***

*'The Gift of Humanity truly understands emotions and consequently understands all people. **This is a Gift that can only be earned.** These are people who have looked deeply into their own Shadows and who have grappled with the challenges of their sexuality and emotions.'*

*'As a living transmission, the 36th Gift carries a great teaching into the world – the celebration of **Humanity**. This Gift contains a natural spirituality – it is one of the most grounded of all the Gene Keys. **It is a bridge for the higher bodies of humanity to move down into the lower planes and transform them.***

*'The deepest role of the 36th Gene Key is to help humans to become humane - it is their courage and deep acceptance of the life process that eventually gives rise to the highest of human expressions – the expression of **Compassion**.'*



*'Those in whom this Siddhi has awakened tend to keep moving into those areas of life where the light is most darkened. **The simple presence of such people and the look in their eyes can trigger all manner of so-called miracles in those whom they meet.** These are the most heart-melting people ever to walk the face of the earth. Wherever they go, the true frequency latent within human suffering is immediately released and **Compassion** tears open people's chests and explodes inside their hearts.'*

*'Even the darkest of natures can be instantaneously brought to tears through the presence of this 36th Siddhi. At the Siddhic level your own suffering becomes so Universalised that it encompasses all humanity. **All boundaries of the self dissolve.***

Sedna remains, as for last month, on Gene Key 20, known as **The Sacred Om** moving through the Shadow of **Superficiality** to the Gift of **Self-Assurance** to the Siddhi of **Presence**, and it is worth repeating again that Sedna on her 11,400 year orbit comes into her closest point to our Solar System, in a few years time, clearing the patterning in the morphogenetic field and raising it to the highest level for its next 11,400 year cycle. So, again Gene Key 20, is really relevant, both individually and collectively, as this Key holds the potential for a major evolutionary shift of our Shadow energies that were created in earlier rounds of consciousness.



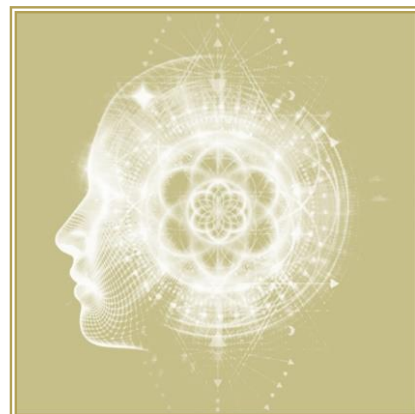
*'The 20th Gene Key and its Shadow were developed in species that preceded human beings – primarily in the world of insects. Looking at insects, we see how incredibly busy they always seem to be – **there is a blind activity occurring and like insects, at a Shadow level, human busyness lacks real presence.** With the development of the neo cortex we began to think and a strange thing happens when we think – **we leave the present moment.** This occurs because the mind can only think in a linear fashion, in a false reality called Time.'*

*'With Self-Assurance comes a profound surrender to life in every moment. **As you begin to accept that life has its own plans and flow, you also begin to stop interfering with the process at a mental level.** What actually occurs with this Gift is that the awareness within your solar plexus begins to take over from your mind, opening the way for you to connect into a very powerful Universal power.'*

*'As you begin to learn the knack, you experience the subtle expansion of a meditative awareness. **An internal spaciousness grows and you no longer have to try to control life.'***

'The true Siddhic state is one of complete relaxation. Thoughts are irrelevant – there is nothing to say that is not superficial – for nothing is felt but the Presence itself. The whole world created by the human mind is suddenly seen as utterly superficial.'

*'When this Siddhi has flowered in a person it creates a subtle atmosphere around itself – a kind of silent ease that pervades the aura of the person and radiates out to all Creation. **It is the Manifestation of The Presence through a human vehicle.'***



At the time of the New Moon, Uranus, which is retrograde has moved back onto Gene Key 8 alongside the Earth, bringing an intensified electrical, high frequency charge, pulsing through the physical plane which can create sudden shifts and changes. Gene Key 8 is known as the **Diamond of the Self** evolving through the Shadow of **Mediocrity** to the Gift of **Style** to the Siddhi of **Exquisiteness**.

*'This Gift is wild, organic and unpredictable energy full of genius and quantum leaps. **Such is the power of genius, for it carries within it more than just a new concept – it carries intent from a higher realm that is far beyond the individual through whom it manifests.** Their only concern is to free more free thinkers – thus such people inherit a powerful mission in the world.'*



*'As an aspect of the genetic family known as the Ring of Water, the 8th Siddhi of Exquisiteness is chemically bonded to the 2nd Siddhi of Unity. **These are the two great Feminine Gene Keys in the human genome drawing all human beings along their inevitable journey to self-realisation.'***

*'One of the great Mysteries of the 21 Codon Rings is found here. **The Ring of Water forms a kind of eternal genetic knot with its polarity, the Ring of Fire.** These two chemical families move us human beings along the trajectory of our destinies ensuring that our genetic material finds its opposite match.'*

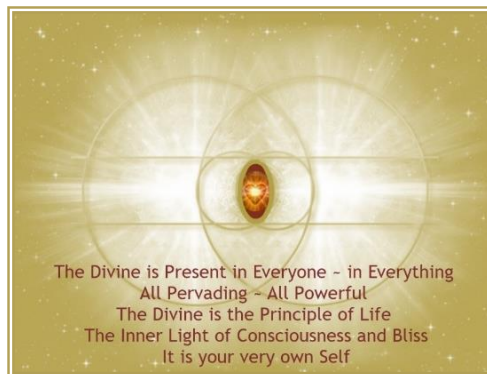
*'Deep within the body these chemical families set the primal blueprint for the balance of all the opposing forces inside us. It is the crossfire of these two Codon Rings that the mystical figure of eight is forged within us. This eternal love knot deep within our planetary gene pool sets each man and each woman squarely on the human journey. **The true symbolism of the number eight represents the timeless quest for the buried treasure that lies inside each of us – that elusive diamond of our true nature.'***

*'The 8th Siddhi of Exquisiteness is the natural revelation and manifestation of all the Siddhic states, for each Siddhi is holographic in the sense of being reflected within all other Siddhis. **People of the 8th Siddhi are not leaders.** They are examples. **Exquisiteness is experienced when the Divine Essence begins to shine through the individual.'***

*'In this state of Bliss you fall in love with your own pristine manifestation because it is through this uniqueness that the Divine currents can be accessed. **This is the stage at which you achieve transcendence of your genetics.** You remain differentiated at the level of form, but at the collective Universal level your awareness permeates all forms, making you both a drop in the ocean and the ocean itself.'*

'There is an inner Light and Wisdom that has a powerful and liberating effect on others, freeing them from the structured systems. Such people create their path as they walk it. Their legacy to the world is to dismantle all concepts of how one should live or what one needs to do in order to attain any particular state'

'They sparkle like exquisite rare jewels. They shine like a diamond in the heart of creation and wherever they look, they see other diamonds in various states of clarity – each one unique, each one exquisite and incomparable.'



Continuing on from Uranus, the focus on the shifts and changes that are occurring on Earth is maintained, as Typhon, out in deep space, is a central point at the time of this New Moon, conjunct the Sun and Moon and Mercury, and exactly opposite to the Earth. According to ancient Greek legend, Typhon is the son of Gaia and Tartarus and considered to be the Titan of strong winds and storms and Earth movement.

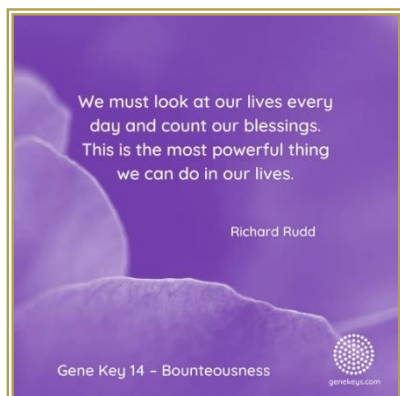
These legends, and stories are memory patterns held in the collective group unconscious, and as shared, these patterns, tend to keep repeating, until we individually and collectively decide to move beyond the Shadow, to face the fears and integrate them into a higher frequency, to consciously create in harmonious interaction with the Elemental Kingdoms and the Angelic Realms.

In this case, at the time of the New Moon Typhon the Sun Moon and Mercury are on Gene Key 14 which asks that we move beyond a sense of **Compromise** to finally embody **Bounteousness** which is the truth of our Being.

*'Compromise has become so embedded in our group psyches that we don't even realise that we are doing it anymore. **Compromise is the by-product of living without a sense of personal freedom.** It implies a lack of imagination and an inability to believe in the power of our own uniqueness and individuality.'*

*'The 14th Gift is Competence. **It is an emerging Gift in the genetic matrix, because it has a lot to do with the collective awakening rather than being an individual Gift.** If this Gift is applied for selfish ends it will lead to great misfortune. Great wealth without an ideal of service ends in disaster. **Competence is about being part of something transcendent, something huge.** The 14th Gene Key is one of the Gene Keys that will change our world.'*

'At the Siddhic level of consciousness, energy is transmitted through the individual via the medium of the morphogenetic field. Morphogenetic fields are energetic grids that connect all creatures and particles of matter at a sub-atomic level.'



*'The 14th Siddhi is the core archetype of your power as an individual. It is the Siddhi of Bounteousness – the ultimate legacy of what it means to be a human. This is our true inheritance – to create abundance. **But it is not about accumulation – it is about fertility.** Your true fertility lies mostly dormant in your genes.'*

*When the 14th Siddhi flowers within human beings they become a driving force for humanity itself. Their every thought word and deed reaches deep into the morphogenetic field and guides the whole of humanity towards abundance. **The mass dawning of the 14th Siddhi would be the uniting of Heaven and Earth.'***

*'Not just a Golden Age, but a permanent state in which all humans take the helm together – a state in which individual power and collective power become one and the same – creating more and more abundance. **At this level, we need to view humanity as one large expanding genetic spiritual vehicle.** That is the true definition of Bounteousness.'*

Jupiter, as for last month is holding this moment in time, on Gene Key 20 – Jupiter speaks of Freedom, Truth and an expansion of Awareness - a waking up out of the Compromise that has held humanity for so long.

Gene Key 62, known as **The Language of Light** is evolving us through the Shadow of **Intellect** to the Gift of **Precision** to the Siddhi of **Impeccability**.

'Intelligence is of the Heart, whereas intellect is of the mind. The human intellectual capacity to read, write and speak is both our greatest blessing and our greatest curse. Problems arise when we identify our lives with our thoughts, which we have been pre-programmed with throughout our upbringing. **Until we are able to step outside of this mental framework we are controlled by our language, thoughts and belief patterns.'**

*I AM not the body
I AM not the emotion
I AM not the thought
I AM not the mind
The mind is just the subtle
instrument of the Soul
I AM the Soul*

'Precision happens when natural intelligence strikes a balance between the heart and the mind, but with one caveat, that the heart, the feminine principle, is given control over life. The masculine principle, the intellect, then moves into service of the feminine principle, which is about intuition, listening and receiving rather than thinking, expressing and transmitting.'

'As the Gift of Precision grows stronger it may seem as though the world gradually begins to come alive again. Intelligence recognises intelligence and with the mind out of the way the invisible essence that connects all beings is once again felt.'

'The 62nd Gene Key is genetically coupled with the 31st Gene Key forming the codon known as the Ring of No Return. This mystical name describes the evolutionary process that takes place when higher consciousness reaches the throat centre. **The throat centre is where the greatest human initiation occurs.** Once the higher involutory currents begin to use our voice to transmit their truths, you begin a process of detaching from your own identity.'

'The 62nd Gene Key allows access to the Universal Language of Light behind all forms. There is a deep magic woven into language – words become much more precise - as your language becomes purer you expose your heart to the world. Words spoken from Love are deeply healing. **This is why there is no return once you begin to speak your truth – you have broken away from the lower realms forevermore.'**



'The word Impeccable is often misunderstood when used in reference to true Masters. The most common mistake we make is to believe that one who manifests the Siddhi state must now behave in some kind of holy way. **However, Impeccability, simply means exempt from doing sin.** Pure consciousness is at play within the being, so whatever they say or do is beyond reproach.'

'The 62nd Siddhi concerns the use of language at a level beyond our ken. Every word has its frequency and vibration and the order and tone of your diction creates a certain aura. **At the Siddhic level words do not come via the mind anymore – they are not thoughts that become words.** They emerge directly from the void, naked and pure.'

'There is a Cosmometry behind life that choreographs all actions. The closer you come to full awakening the more harmoniously your life flows within this Cosmometry. When you finally merge into the ocean of consciousness you achieve complete oneness with the Divine.'

'Divine Cosmometry is the language of perfection. It is the manifestation of Impeccability in which your every movement and breath becomes an emanation of the Pure Light. **You have entered into the Language of Light – the Impeccable Beauty of Being.'**

Before closing this month's Review there is one further major aspect that is occurring, which is Mars at 11⁰ Sagittarius making a 90⁰ degree angle to both the North and South Nodes, which will become exact on the 23rd of November. The North and South Nodes link to karma, and Mars to personal action – in many ways Mars acts as the timing for the unfolding of energy and in this case it appears to be a case of either acting from past memories (S Node) or stepping into the Truth of our Being (N Node) – it is a choice point.

Mars is on Gene Key 11 known as **The Light of Eden** moving through the Shadow of **Obscurity** to the Gift of **Idealism** which ultimately reveals **Light**.

The 11th Gift is one of the great keys of our present age. The more people can be encouraged to play with the imagery and creative power coming from the right hemisphere of the brain the healthier the world will become. Idealism is given a bad rap in our modern world.'

'As we humans begin to think once again with our right brains, so we will bring much needed balance to the world of form. In accessing and honouring the gifts of the Divine Feminine and in balancing the left and right hemispheres of our brain we will once again re-awaken true harmony on Earth.'

'The 11th Siddhi itself has confused many people seeking the Light that this Siddhi promises. However, no one who attains this Siddhi does so except through travelling the darkest aspects of their psyches.'

'For the being that attains the 11th Siddhi, Light is everything. If they become teachers, which is likely given their understanding of the mind, they continually reflect their own Light but at the same time guide others into their own darkness. Through the 11th Siddhi, you will see the true nature of mind as emptiness or spaciousness and that mind or no mind is experienced through the brain as pure Light. It represents the transcendence of duality. As long as we see things in terms of good and evil we have embraced the fall.'

'In the future, the 11th Siddhi will crack open our perception of the world so that we may access the purified Light that is the Mind and Body of the Divine. The 11th Gene Key geometrically relates to the Galactic Centre. It is through this Gene Key that the Galactic Light emerges that will trigger our DNA to release its Inner Light and catalyse the Siddhic states in many people. This will also exponentially increase the frequency field of the whole of humanity.'

The South Node is on Gene Key 64 – guiding us through the Shadow of **Confusion** to the Gift of **Imagination** to the Siddhi of **Illumination**, and the North Node is on Gene Key 63 evolving us through the Shadow of **Doubt** to the Gift of **Inquiry** to the Siddhi of **Truth**.

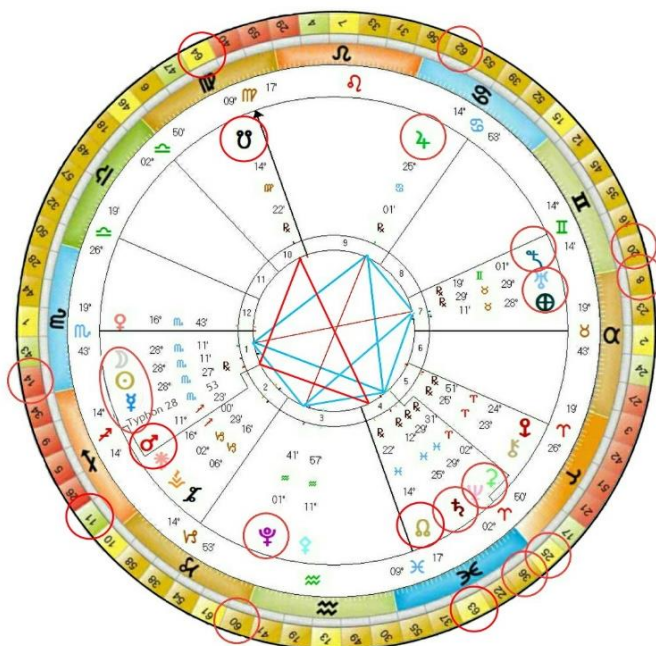
'The depth of pain felt and expressed by the human race is both born and resolved in the genetic coupling of the 64th Gene Key and its programming partner the 63rd Gene Key. Despite the reality of the pain we are born into as we enter a human body, there is good news. The solution is so simple. The suffering we feel – though real within the context of our physiology – is an illusion when it comes to our minds and our minds hold the key to its release.'



'Once you are willing to feel the pain – the miracle begins. Once you realise that there's no point in trying to make the pain go away you may finally begin to see the loop you have been caught in, in repressing or reacting to the pain.'

'As your inner spirit decides to face who you really are – the mind's long reign over you gradually begins to crumble. All the energy that was going into your previously held thought processes is liberated and in some rare cases this sudden release of energy manifests as instant enlightenment.'

'The 64th Siddhi is the Siddhi of Illumination. This is Imagination without the personal 'I'. When that 'I' ceases to need to exist magic comes shining through. When Illumination floods your being, it also takes possession of your mind. In this sense to be Illuminated means to think God's thoughts.'



'At this level the Mental Body gives way to the Causal Body. At the Divine level your Causal Body/Soul becomes your physical vehicle. **Once the frequency of inner Light illuminates physical form, that form begins to ascend.** It may or may not be able to ascend physically depending upon its genetic constituents. Physical ascension is directly dependent upon Divine Will.'

'Only certain evolutionary human vehicles are equipped for this purpose. This is the meaning of Transfiguration – when the Causal body draws the Physical body up into itself. Only the higher codes of the Ring of Alchemy involve such rare occurrences.'

And, the North Node on Gene Key 63, known as **Reaching the Source**, is the pathway for our spiritual evolution when the frequencies of the South Node are raised and integrated.



'The 63rd Shadow of Doubt represents a huge question mark literally wired into the human brain. A never ending pressure of feeling unsettled somewhere deep inside. Doubt is not the enemy. Your fear of uncertainty needs to be recognised and embraced because the deeper you can embrace uncertainty the closer you come to transcendence.'

'The real purpose of Doubt is to serve the higher good in an impersonal way. As you slowly ascend the ladder of frequencies, the nature of your Inquiry changes. **When you begin earnestly to question your own nature and purpose – you begin refining your physical and spiritual essence to such a height that you arrive at liberation or spiritual realisation.'**

'It is Divine Doubt that drives you to follow a Spiritual path in the first place. No matter how elevated a person's awareness becomes or how advanced their yogic discipline is, until they reach this Siddhic realm they will never realise the ultimate paradox that is Truth. **The Siddhi of Truth is everywhere - there is nothing that is not Truth.'**

'Whatever happens, however, delirious or disturbing, it is nothing but Truth. Truth is simply the here and now in every moment at every stage of your life - it is Consciousness expressing itself. It is simply waiting to be realised, like a pearl within an oyster.'

'Truth is the Eternal Moment of the Universe. It is beyond our perception and yet it's closer than a heartbeat. **It is our nature and goal to be an embodiment of Truth so that we too one day can say I am the Way the Truth and the Light.'**

As the Solar activations in the Cosmos continue to increase and the Galactic Light intensifies onto and into our Physical Plane, together we are collectively healing ancient wounds and the Divine Feminine qualities of Intuition, Compassion and Acceptance, are returning. Our DNA is awakening to its original Light as fear is being replaced by Presence, Love and Truth.

So, as we consciously move through this Lunar Month may we integrate these increased Galactic Solar frequencies, that are enfolding the Earth, into the **Stillness** and **Silence** of our **Being, Illuminating** the **Truth** of the **Light** that is held within every Cell of Life, released and realised through the **Presence**, of **Compassion** and **Universal Love**.

All Love and Blessings