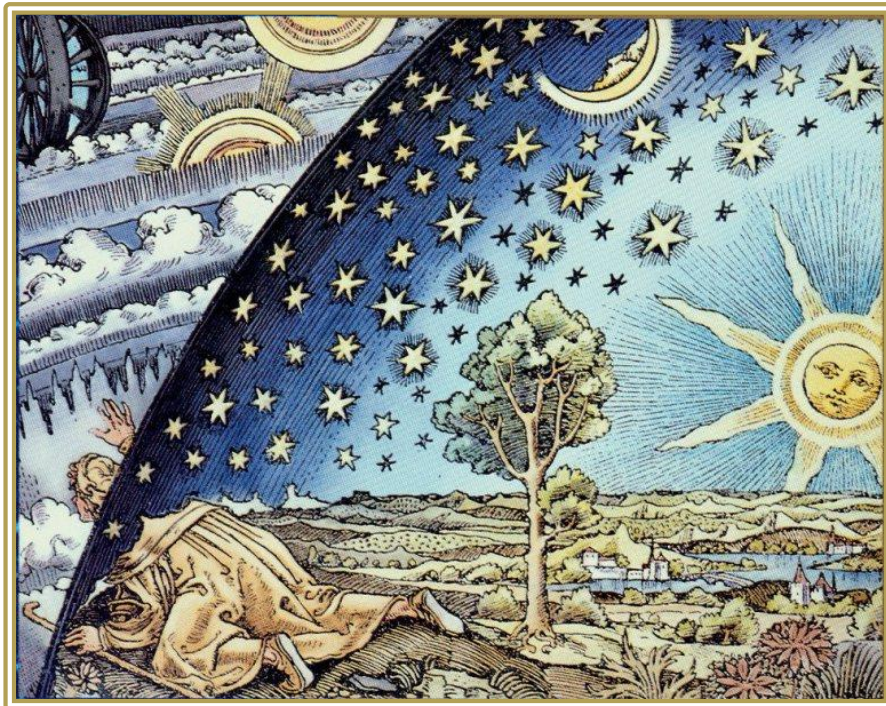


Cosmic Overview

Aries New Moon 2023



*'Beyond the realms of what we see,
into the regions of the unexplored,
limited only by our imaginations.'*

Albert Einstein

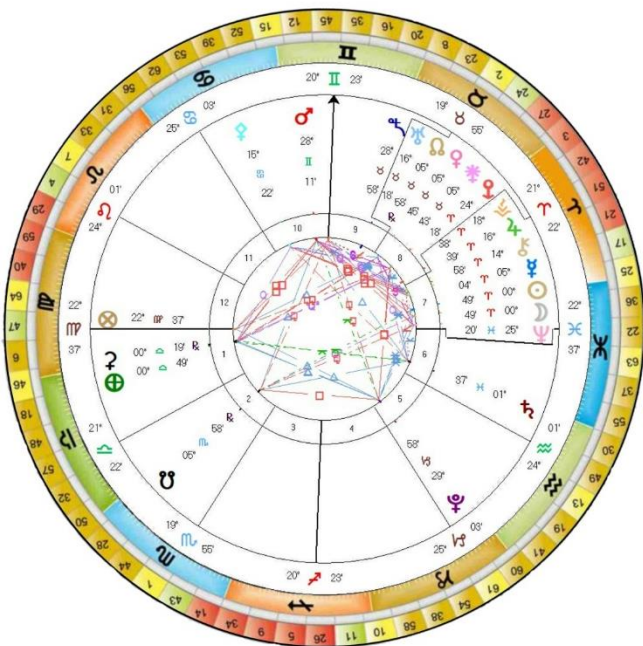
*'Outwardly there is chaos.
Inwardly a New World is stirring.
Listen to the heartbeat of the New.'*

Anon

'Imagine all the people living Life as One.'

John Lennon

I AM the Light of Life Itself



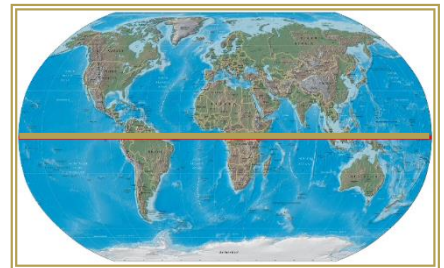
This month's New Moon takes place on the 21st or 22nd of March, depending upon where you live, and just under twenty-four hours, after the Spring/Autumn Equinox, when the Sun, as seen from the Earth, is at 0° Aries and directly above the Equator, giving close to equal lengths of daylight and hours of dark, around the world.

0° Aries, marks the beginning of the Solar year, in the Northern Hemisphere - a new cycle unfolding and, as such, you could say it is the imprint/blueprint for the following twelve months, until, once again, the Earth has journeyed around the Sun to arrive back at the next Spring/Autumn Equinox.

The Arian Spring Equinox, known as the *Light of Life Itself*, carries an additional charge and impulse, which is reflected within the Nature Kingdoms.

It is fitting that the Constellation of Aries marks this turning point of our Cosmic yearly cycle, as Aries surges with a tangible, potent, forcefield created by the Fire Elemental. The Fire Element of Aries is Cardinal in nature through which the *1st and 7th Rays of Divine Will and Synthesis*, stream down through the different planes of consciousness into the Material Realm.

Looking at the map you can see how the world is divided into the North and South Hemispheres. The Northern Hemisphere at the time of the Spring Equinox has Mars, the Planetary Ruler of Aries, as the driving focus – whilst the Southern Hemisphere has the Planetary Ruler of Venus flowing through the Constellation of Libra, flooding their Etheric Nature Kingdoms at the time of their Spring Equinox.



This might explain why it is that, the countries of the Northern Hemisphere, with Mars, Aries and the *6th Ray of Devotion*, have been the region that have actively sought to expand their territories, and continue to fight religious/ideological wars - whilst the population of the Southern Hemisphere with Venus, Libra, and the *3rd Ray of Active Intelligence*, activating their Etheric Realms at the time of their Spring Equinox have a very different impulse – it is the Electro (Mars) Magnetic (Venus) duality playing out across the globe.



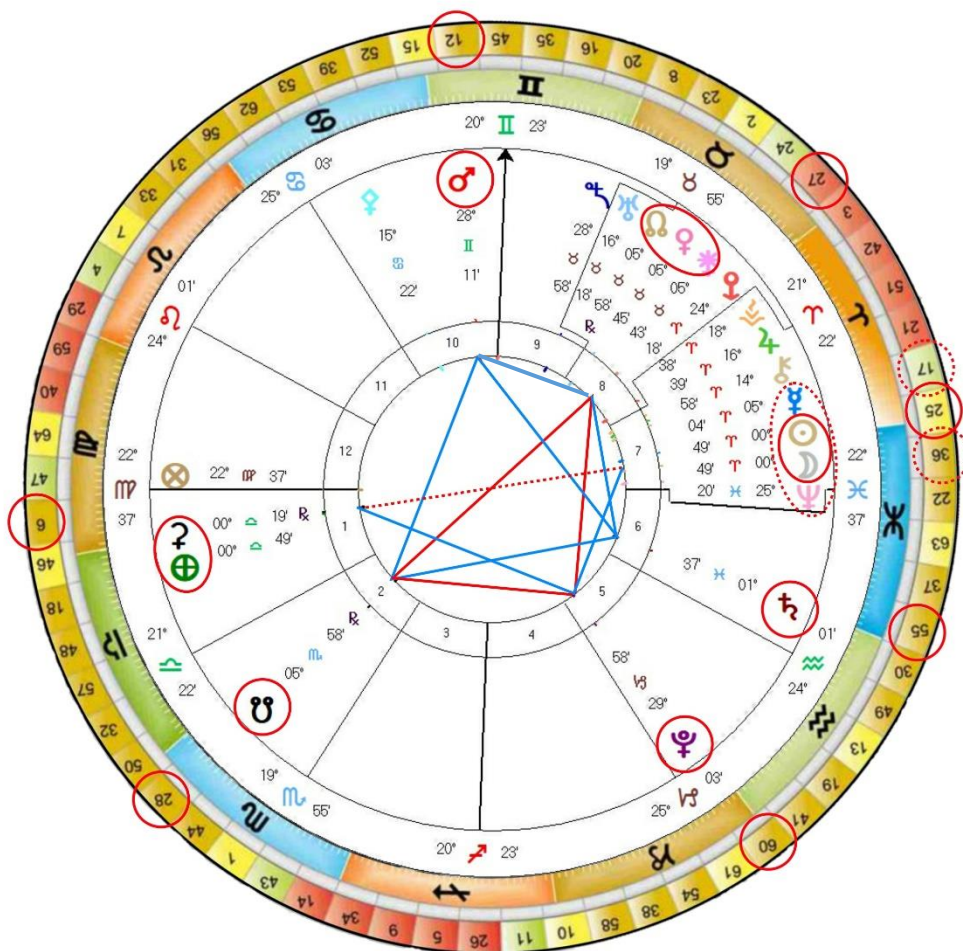
At a higher level of consciousness, as the *Light of Life Itself*, the Soul focussed Arian 'fights' for the well-being and welfare of others, moving beyond instinctual, territorial, aggression, to use the mind, Mercury, which is the planetary Ruler of Aries at the Soul level, to correct injustices and to seek honourable and just resolutions, in all areas of life, for all countries, through open discussion and mediation, creating Harmony and Unity for All.

At its height, the Arian vibration has the ability to birth ideas that are flowing directly through intuition and Source, working directly with the Plan of Evolution, which will establish Peace on Earth. Each of these scenarios is but the reflection and the expression of the level of each individual's consciousness combining within the Group Consciousness of Humanity.

In the noisy confusion of life keep Peace with your Soul.

Desiderata Max Ehrmann

Chart for the Arian New Moon



New Moon 21st March 2023 17:23 UT London UK
<https://www.timeanddate.com/moon/phases/>

This New Moon takes place, as shared, a few hours after the Equinox and Pluto ♃ moves out of Capricorn into Aquarius two days later on the 23rd – so there is a noticeable shift occurring. The Arian impulse to act, to initiate, to set in motion, surges with a tangible forcefield, at the time of this New Moon, as there are six Cosmic Bodies in Aries, orbiting the Sun, as seen from the Earth, so there will indeed be an innate desire to get on with things, to strike while the iron is hot. But for all of this Arian action and impetus, it would be wise to take a pause and to take the time to deeply discern what is happening, for the Sun and Moon at this time, are at, what is known as, the midpoint of Mercury ♀ and Neptune. ♃ (As shown by the red dotted circle)

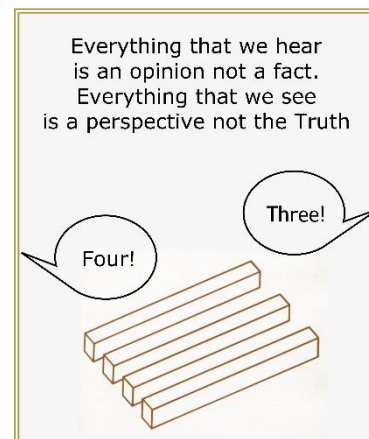
This particular stellium of planetary energy underpins this chart in subtle ways. When the Sun and Moon are at the Midpoint of Neptune and Mercury there is the ability to dissolve the boundaries that limit communication between, individuals, countries, and indeed, between one Realm and another Realm, for intuition, is increased and imagination expanded. Also, with Mercury being in Aries there is a Soul quality that is seeking expression, so there is a potential for Peace talks to begin between Ukraine and Russia.

At lower expressions there is the possibility of communication that is distorted or confused, information that keeps pouring out (*Neptune*) that is trying to obscure the waters and to create a diversion, a smoke screen, so best to maintain an overview, to discern inwardly what is of high resonance and equally, to maintain your balance by focussing and holding uplifting thoughts. At this time when there is so much conflicting information swirling in the ethers, it is more beneficial to hold the steady heartfelt vision of Peace on Earth, as a reality of Divine Will.

Looking first at the Kite Formation in the chart for the New Moon, we see that Saturn ♄ has moved into Pisces, and Saturn in Pisces again has this sense of boundaries or dissolving boundaries. Saturn links to the establishment, authority, structure, and to rules and regulations, on the Earth Plane, and Pisces to the fluid nebulous mystical world of the 'watery' oceanic field of the quantum world. So, it is interesting that at the time of writing, as Saturn moved into Pisces, there has been an agreement to protect International Waters. After almost 20 years of talks, United Nations members have agreed on a legal framework for the protection of parts of the Ocean outside national boundaries. With Saturn in Pisces, however, it is worth checking the small print, on all documents to see how beneficial proposed agreements really are.

Saturn in Pisces, over the next two and a half years, is also asking that we check the assumptions and opinions of all that we imagine we know and test it against, an open mind and an inner reality, as it will be easy to get caught up in believing in 'our' truth versus 'their' truth and both can be a mirage.

From a third-dimensional level of Consciousness, it can be hard to see through to the Truth hidden behind a smoke screen of words, but as our consciousness rises in frequency we may well find that we develop an antenna that has lain dormant for generations - the ability to perceive with clarity/clairvoyance and a developed enhanced intuition. From this higher perspective Truth will be revealed as a direct inner knowing.



Saturn right now is on Gene Key 55, which is where the New Moon took place last month - so it is anchoring and reaffirming the message of this Gene Key more deeply into our awareness. The message of the 55th Gene Key is that we need to move beyond a state of **Victimhood** to reclaim our **Freedom**, both individually and collectively, by dissolving the barriers that keep us held in a state of Limitation.

*'The 55th Gene Key holds the key to our liberation and Freedom. **Our DNA holds our greater Self – the Cosmic part of each of us that transcends our mortal body which has lain secretly hidden inside humanity for eons.** The 55th Gene Key allows us to contemplate and to quicken the actual process of awakening. Up until now, the inner journey has been for the select few – those bold adventurers and courageous pioneers of the inner planes. But that is all about to change.'*

*'As we begin the process of transcending our Shadows, miracles can occur in our lives. Much of the 55th Gene Key concerns the future of our species as it moves through the Great Change. We are now entering an era in which more and more people will have direct access to an experience of true higher consciousness. There will be a genetic mutation that will slowly colonise our species. **The old human will literally be bred out of humanity.***

***As your awareness stretches, the spirit of Freedom breaks down the barriers in your life.** The fractal lines open all around you and energy that was blocked in a certain dimension suddenly precipitates unforeseen beneficial circumstances in your life.'*



*'We carry a lot of hidden agendas, all aimed at validating our separate existence. **The Transformational Way through the 55th Gene Key, and therefore all the Gene Keys, is one of letting go.** We gradually begin to drop stuff and become more and more open. Slowly, slowly we become lighter.'*

'We stand on the cusp of a Siddhic supernova – the incarnation of the Divine Feminine spirit. The end result of this in flowing of the Divine Feminine will result in the purification of all the fractal lines throughout humanity, resulting in a burning up of the collective karma in our DNA and the eventual eradication of all disease on the physical plane.'

Saturn is 120° away from Mars.♂ Mars links to our sense of individuality and our personal will and, as the planetary ruler of Aries, is a focus at the time of this New Moon. Mars is on Gene Key 12, known as **A Pure Heart**, whose Gift is **Discrimination**. This Gene Key focuses our attention on discerning, whether our actions are coming from the mind or the heart. Aligning the heart and the mind, is the central message for the time that we are passing through, for the balancing of the mind and heart opens us up to higher consciousness and to the higher resonances held within our DNA.

'The 12th Gene Key, along with its Shadow, Vanity, and its Siddhi, Purity, is one of the most extraordinary and far-reaching archetypes in the human genetic matrix. The 12th Gene Key is special. Within the mystery of the Codon Rings, this 12th Gene Key forms a ring of its own within the Ring of Trials, known as the Ring of Secrets. However, its secrets remain firmly locked away until you activate its highest frequency in the 12th Siddhi.'



'The 12th Gift contains the teachings of transformation and death – the movement from one level of consciousness to another. Of all the Gene Keys this 12th Gift represents the mythic passage from one state to a higher state in which the stop codon kills your identification with your past, allowing you to be transformed; through tears and laughter, the transcendent enters your body, and alters your chemistry leaving you radically and permanently altered.'

'To discriminate is to know inherently what and who is healthy for you in life. If you are strongly influenced by this Gift you will recognize the beauty of true expression, which means that you will also recognise when something or someone is not expressing true Soul.'



'Everything in the Universe has at its core the same original Purity – we are all shards of a Divine crystal and as our forms go through their processes of polishing, so consciousness begins to remember itself through us. Even the most evil of beings has at its core a shining pure heart which means that in truth, there is no evil – just progressive levels of density.'

'In the ancient alchemical systems, the throat centre was seen as the greatest of all initiations. All the lower chakras including the heart are synthesised and purified in the throat. In this respect, it represents the boundary of the known and unknown. It is the abyss or Daath of the Kabbalah. The Being who has passed through the abyss and entered the sphere of the 12th Siddhi becomes once again like a child.'

'It is the ultimate purification in which you meet your own death and are reborn in a higher sphere – into the Sphere of Divine Love. With Vanity, your lower self falls in love with itself and with Purity, the Higher Self falls in Love with itself. You might say that Purity is when the Divine falls in Love with You.'

And Mars, at the time of this New Moon, is linked to the South Node, which holds the collective group karma, relating to all that has passed over these last years as well as to the group ancestral karma coming from many, many centuries ago. So, right now, we are in effect witnessing past memory patterns being acted out, that are needing to come into resolution, correction and balance.



The South Node is on Gene Key 28 known as **Embracing the Dark Side** moving through the Shadow of **Purposelessness** to the Gift of **Totality** to the **Siddhi** of **Immortality**.

'The Gift of Totality is a wonderful Gift to have and it belongs to anyone who really knows how to trust in life. Totality means to live alongside fear – and to live with the unexpected and to stay open to continual change whilst remaining committed. The Gift of Totality means to embrace the whole of your nature and the whole of life – the pleasure and the pain. To be total, in the sense of this Gift, means to live without allowing your mind to dictate your life.'

*'This is Life lived for the moment in the full knowledge that life purpose can only be found in the present moment rather than in the distant future. **It is a mythic path – a path that Jung called individuation. Shamans would call it the retrieval or incarnation of your full Soul.'***

*'When a being attains this state through the 28th Siddhi, they take on a particular mythology – their specific gift is to highlight the fears of others wherever they go. This is simply an aspect of their awakening operating through their genetics - thus, they are said to have the gift of casting out demons, because this is precisely what their aura does. **Through its Grace, it highlights the darker, unaccepted aspects of one's nature and absorbs them into non-existence.'***



'As already stated, this Siddhi contains the seed of the manifestation of Immortality in form – when the elements of our future vehicle will coalesce and form another kind of vehicle to house the higher consciousness of humanity. We humans see from within the confines of our time processing brains. We have no idea whatsoever of what Immortality looks like.'

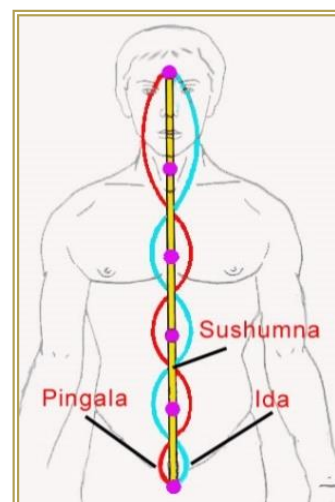
*'Here is the truth – it is in front of us and we just can't see it until we see it. **Immortality is to be found only in the present moment.** Deep inside each of us is a Presence that transcends our physical, emotional and mental form. **The only purpose of life is to reveal this Presence to itself. It is our Essence – beyond life and death – beyond time and space. That is Immortality.'***

The North and South Nodes, as for last month, are the pivotal focus of the Kite Formation. The Grand Trine of Saturn, Mars, and the South Node flows to the North Node, which, like last month, remains on Gene Key 27, but this month there is an additional impetus, as Venus and Juno come to join the North Node at 5° Taurus.

The North Node is our Spiritual Pathway and direction - it opens us to higher awareness when we have balanced and integrated the South Node's karmic lessons and gifts.

This need for integration and synthesis is reflected by the fact that Venus, as the planetary ruler of Libra (*balance and harmony*) is also joined by Juno on the North Nodal point. Juno speaks to the alchemical marriage, the balancing of the male/female polarity within each one of us - the electromagnetic circuitry that flows through our cellular system and our energetic body, which when balanced brings us into an alignment with our central Spiritual circuitry.

To assist us to move into this alignment Gene Key 27 is asking us to move through the Shadow of **Selfishness**, to the Gift of **Altruism** to become the essence of **Selflessness**.



*'The so-called selfish gene has been a requirement for us to survive particularly for blood ties and close genetic groupings. However, Selfishness must be transcended in order for the next form to mutate out of this existing form of Homo Sapiens. **Selfishness, then is a stage in our evolution that is in the process of being transcended at a collective level.** Thus, our species must prepare itself to make a genetic quantum leap, because that is the only way that it can truly transcend its built-in selfishness.'*

*'Giving from the heart can stir up unexpected Cosmic forces that work to your favour. **To give to others from the heart activates healthy currents deep within your body.** Purpose flows from Altruism like water from a spring – connecting you into your Higher Purpose – it bubbles up inside you, creating warmth and goodwill, which spreads to others. **The true nature of the 27th Gift is generosity, which is primarily about caring for others and nature generally.....** At a deep genetic level, the presence of this*

27th Gift engages a feeling of communal security through its strong resonance to the group mind. As such it is one of the most powerful healing Gifts in the whole genetic matrix.'

'Known as the Doctrine of Harmlessness, the 27th Siddhi of Selflessness has manifested in the lives of many saints throughout history, but this is not about being a do-gooder. Selflessness is an absolute pure yearning to provide succour to others. There is no sense of self-consciousness in it. Such people have made a quantum leap and the Siddhic energy available to them is enormous.'

'Despite endlessly giving of themselves to others, they are not depleted but are continuously nourished by the refined currents of the aura of love surrounding them. The Mathematics of Love are built into the structures of all life but only when we discover these laws will human beings realise their highest potential. Inherent in the 27th Siddhi is the realisation of the Divine law of Philanthropy – the Love of Humanity. At the Siddhic level, this Gene Key becomes capable of miraculous healing.'



This purpose, which is being activated by the North Node, and Gene Key 27, is strengthened and highlighted, as Pluto, the planet of Transformation makes a 90° aspect to both the North and South Nodes (Red lines). Pluto flows with the 1st Ray of Divine Will assisting in bringing the collective past (South Node) into present awareness so that we can make informed choices as to how we wish to create the future (North Node) as we stand at this fork in the road.

Pluto is on Gene Key 60, known as the **Cracking of the Vessel**, which was first initiated, by Pluto, for three months back in March 2021, before returning in January 2022, to finally leave in December 2025. So, Gene Key 60 is constantly imprinting our consciousness and informing our DNA to move beyond the Shadow of **Limitation**, to the Gift of **Realism**, and on to the Siddhi of **Justice** so that we may break free of limiting restrictions and embrace our next evolutionary curve.

'This Shadow appears wherever imagination and openness are stifled, or wherever men or women have forgotten who they are. Most people do not think magically; they do not leave the door ajar within their brains so that inspiration may creep in at any moment.'

There is great capacity for magic in this Gene Key which may sound odd as it is called the Gift of Realism. Actually, Realism in its truest sense always involves magic and the only thing needed for magic to occur is some form of a structure and an open mind. We know from modern quantum physics that all matter is made up of vibrating energy fields. Therefore, all structures in the world of form are really an illusion. They are frameworks through which something unexpected may occur.'

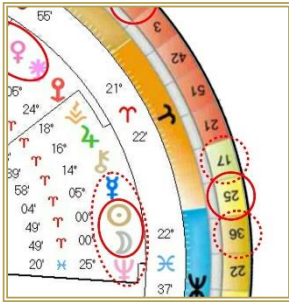
'Another synonym for the 60th Gift, might be the Gift of common sense, for it is common sense to remain open-minded to everything in the Universe because everything has at its core the same wondrous inner Light. It is the responsibility and great privilege of humanity to be the outermost peak of the awareness of Gaia. We are her eyes and ears. We are her very mind. Everything of true value is hidden inside form – inside our body, inside the ferrous core of the planet, inside the vibrating fabric of your inner being. It is all rooted inwardly. This is why humankind must discover inner space, why we must turn inward for inspiration.'

'Life moves in cycles. Every now and then a transmutation occurs. At a certain point, our hearts open to our true innocence and we begin to unlock other codes in our DNA that are ancestral rather than personal. We begin to transmute more global karma and the more our being opens, the more we are given.'

'The 60th Siddhi is an extremely rare Siddhi. When a Being attains Self-realisation through the 60th Siddhi, something quite extraordinary happens, the fundamental laws that govern physical existence are loosened and in some cases broken altogether. At a collective genetic level this kind of event is called a frameshift mutation. The 60th Siddhi breaks all laws of our reality – beginning with the Laws of Time and Gravity.'



*'The 60th Siddhi of Justice is true magic because it is acausal. It cannot be learned, mastered, or imitated. **The Siddhi of Justice is not retribution; it's a reward. It is given as Grace, not taken as punishment and when it is given, freedom flows from it.** Every time a being attains enlightenment through the 60th Siddhi, magic comes pouring through this being and they become a phenomenon, a symbol of the breaking of form – **Masters who have attained the Body of Light.**'*



If we now turn to where the Sun and Moon are at the time of this New Moon we find they are holding the impulse that was created a few hours earlier at the time of the Equinox - which is the message of Gene Key 25 - the **Myth of the Sacred Wound.**

Last month, Venus was activating this Gene Key, reminding us that it is our inner sense of unworthiness that underpins the limitation and the sense of **Constriction** that holds us in the Shadow, until we open to **Acceptance** which ultimately reunites us with the field of **Universal Love.**

'Constriction is the physical manifestation of fear at an individual and Universal level. As we learn to face our wounds our journey becomes clearer and easier- we begin to walk the path from fear to love and through Acceptance, the wound begins to unwind and another higher destiny opens before us.'

*'Here in the 25th Gift we arrive at one of the greatest and most powerful of all human Gifts, the Gift of Acceptance. **Because this 25th Gift represents the portal to the true nature of the Universe as Love, it has incredible relevance for all human beings.** The flowering of Love follows the burgeoning of Acceptance. Acceptance is based on taking the soft approach to life. **The Path of Love is the path of Acceptance, which is not a technique but more of a seeing.** In order to accept something about yourself, and especially something uncomfortable, it first must be recognised.'*

*'The state of Acceptance is akin to "Spiritual Springtime" where everything seems new again, flowing more easily and freely. **The 25th Gift makes it difficult to hold any resentment, judgment or indeed worry about life – for now you are carrying the Seed of Love.** You will walk through life with an air of another world about you, whilst at the same time being deeply grounded and open to others. When you can finally accept everything in your life just as it is right now you will have embraced the human wound.'*

*'The 25th Siddhi is a special Siddhi, whether it happens to be within your hologenetic profile or not. Every Gene Key exists inside each of us and the 25th Gene Key is the primary archetype of Love. **This Siddhi describes the shift from the personal to the Universal.** Most of us think of love as a personal connection between people or between us and something outside us. **Universal Love lies in another dimensional field. It is the connective tissue that holds together everything.'***

*'The 25th Siddhi is one of the Seven Sacred Seals, a mystical group of Gene Keys whose collective role is to heal the Sacred Wound within humanity. **The 25th Gene Key is the 3rd Seal and it heals the human wound of shame.'***

The Third seal is opened through the 25th Siddhi of Universal Love. This is one of the most pervasive forms of Divine Grace, and as it reaches down into human beings it triggers a huge wave of release that can spread from person to person like a positive virus.'



'All spiritual paths begin with the urge to bring an end to personal suffering – it is the unacceptance of suffering that makes you seek. Eventually, this revelation gives rise to the quantum leap to the Siddhic level of consciousness. Those Beings who have attained realisation through this 25th Siddhi become, in some form, legends. Whether Buddha or the Christ – the aura of such a person shines like a light down the centuries and is felt within the bloodlines of all future generations. Every time someone attains the 25th Siddhi a great genetic constriction is removed throughout Humanity. The bodies of these people have undergone a radical transformation in order to be the receiver or chalice for pure consciousness.'

If we now look to see the Gene Keys that are informing Neptune and Mercury which are enfolding the New Moon, at this time, we find that Neptune is on Gene Key 36 and Mercury is on Gene Key 17. Neptune aligns to the Higher Heart and, as shared before, Mercury in Aries, has the potential to express from a Soul level of awareness.

Neptune holds the vision of **Compassion**, moving beyond the Shadow of **Turbulence** to the Gift of **Humanity**.

'The Gift of Humanity truly understands emotions and consequently understands all people. This is a Gift that can only be earned. These are people who have looked deeply into their own Shadows and who have grappled with the challenges of their sexuality and emotions. At this level, these people are no longer overwhelmed by emotions as they tend to be at the Shadow level but have opened and expanded themselves to life through harsh experience.'



'As a living transmission, the 36th Gift carries a great teaching into the world – the Celebration of Humanity. This Gift contains a natural spirituality – it is one of the most grounded of all the Gene Keys. It is a bridge for the higher bodies of humanity to move down into the lower planes and transform them. The deepest role of the 36th Gene Key is to help humans to become humane - it is their courage and deep acceptance of the life process that eventually gives rise to the highest of human expressions – the expression of Compassion.'

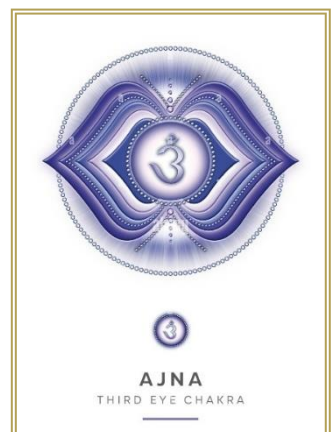
'Compassion is Divinity embodied in humanity. Compassion is the seed that exists within Turbulence. It is the natural radiant emanation of a pure human aura. It is a fragrance given off by our DNA as it activates its highest components. It is the aroma of Grace, the smell of Pure Light. The whole transformational journey through this Gene Key culminates with the release of this fragrance from our Essence. This is the Siddhi that spans the chasm between Man and God, between being a victim and being Enlightened.'

And, for Mercury to shine and express through Humanity from the Soul level of awareness, we need to move beyond the engrained Shadow patterns of **Opinion**, to the Gift of **Far Sightedness** which leads ultimately to **Omniscience**.

'Our ability to base an Opinion on logical Judgment is one of the great powers of human beings. It is this combination that sets us apart from all other creatures and yet it is also what has pulled us away from the reality of our interconnectedness with all other creatures. At the Shadow level, this creates nothing but division because the mind is based on seeing and challenging narrow aspects of the whole, rather than the whole itself. The projected flaw, which is always based on some form of comparison, becomes the point of focus.'

'The true purpose of the 17th Gift is to uphold Integrity, by challenging all misrepresentations of truth in the world. At the Gift level, the individual sees the futility of identifying with a specific Opinion, but rather seeks to differentiate between those patterns that lower your frequency and those that raise it. Once freed from the Shadow frequencies of mass consciousness the 17th Gift has the ability to see higher dimensions and realities - looking ahead to the future and linking one phase of evolution to another.'

'It is working with the Gift frequency that the process known as the opening of the third eye begins. This Gift brings access to a whole new inner language that circumvents the need for one-sided, dualistic expression. Thus, Far-Sightedness can be said to arise directly out of the heart rather than from the mind. This 17th Gift is in fact the true instrument of human perception.'



'When the 17th Siddhi comes into the world it comes like a Divine afterthought. It is the Gift of Grace – opening one of the Seven Sacred Seals. The 17th Siddhi will bring the end to the Sacred Wound of Denial. The only way humans can do some of the deplorable things that we have done is because we have the Wound of Denial. We could not live with ourselves otherwise.'



'Through the 17th Siddhi of Omniscience, the human mind will finally see the perfection and beauty of our oneness with all of existence. The 17th Siddhi directly corresponds to the open 3rd eye. Where seeing and the seen are one. A single eye through which consciousness pours and where past present and future are a single eternal screen of consciousness. These are the true seers and oracles. At the level of the 17th Siddhi, Consciousness sees through you rather than you seeing through it. It is where the body becomes an instrument for Consciousness and there are no borders, levels, opinions or past lives.'

'This is a Siddhi that sees and knows only perfection. The deepest irony of all life is caught in one famous mystic's words: 'God can only come and visit you when you aren't there' or put another way, if you want to know what Omniscience looks like, you, the personality, have to cease to exist.'

Looking finally now at the position of the Earth ⊕ to see what potential is to be anchored by each of us individually and collectively, as we live, breathe and walk upon the Earth - our Home – we see that the Earth and Dwarf Planet Ceres are together at the time of the New Moon, on Gene Key 6 known as **The Path to Peace** moving through the Shadow of **Discord** to the Gift of **Diplomacy** to the Siddhi of **Peace**.

'The 6th Shadow of Conflict is the single most influential Gene Key with regards to human communication. At its highest it has the potential for world peace, at its lowest, it is the root cause of all human Conflict. As long as you surrender your will to the emotional system, then you will be trapped by its volatile nature.'

'In the human body the 6th Shadow relates to the pH balance of the blood. If you have been emotionally repressed through shame, guilt or abuse the entire culture within your being has been disturbed. We long for Peace individually and globally, but our collective low frequency keeps reinforcing the patterns of Conflict.'

'The Gift of Diplomacy begins as soon as we drop our defences and open our hearts. The 6th Gift is all about alchemy. Alchemy is about the transformation of the gross in the subtle. The more the heart opens, the more heart opening experiences occur. Life changes around us; it draws elements around us that further support more opening. It invites synchronicities and miracles.'

'People displaying the 6th Gift are always attuned to the right timing of how to act and what to say through the strong resonance of their auric field. These people feel physically into another person's aura - they can do this because it is a specific genetic gift and also because they are emotionally mature.'

'Emotional maturity means that your awareness operates even during the most profound emotional states. This 6th Gift is breaking down the barriers in human relationships and dismantling the borders and barriers that keep people apart from each other – eventually and ultimately bringing Peace to Earth.'



'The 6th Siddhi of Peace is one of the truly great Siddhis. The 6th Siddhi is the final result of the process that occurs in the 6th Gift. You might say that whilst the 6th Gift is the activity which maintains peacefulness the 6th Siddhi is Peace itself.'

'Peace is an auric vibration that surrounds anyone in a Siddhic state. Awareness is no longer trapped within the vicissitudes of the emotional human drama. Profound changes occur in your physical body before, during, and after this realisation. Since your outer walls have dissolved, the process is mirrored within

your body chemistry and all inner conflict comes to an end. It is as though all the cells within your body make peace with each other and experience their own inner Garden of Eden. In this sense, the true Garden of Eden is the body itself.'

'The waves of Peace that accompany this event travel deep into the collective consciousness of all humanity. Peace is on its way, but it is coming on the inside first. It's coming on an individual level, then gradually through relationships, then into families and communities and then the World.'

As we begin this new Cosmic Year, when the Sun, our Star, is directly over the Earth's Equator, imprinting the message that is being transmitted to us, there is much to contemplate and equally, to embody. As Einstein's words, at the beginning of this Review, indicate and as John Lennon's lyrics shared, some fifty years ago, this New Moon is asking us to be the **Peace** and to use the power of Intent and Imagination to envisage and, to create, a World anew where Unity and Harmony are the outer reflections of Universal Love.

Blessings to All

15.3.2023

Extracts from 64 Ways and Gene Keys by Richard Rudd