

Cosmic Overview

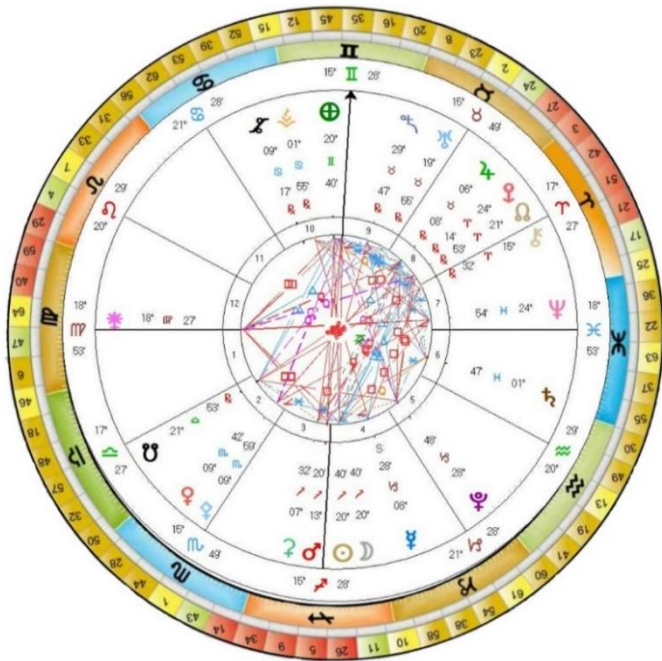
Sagittarius New Moon 2023



*'The greatest Wisdom is in Simplicity.
Love, Respect, Tolerance, Sharing, Gratitude, Forgiveness.
It's encoded in your DNA.
Find your Heart, and you will find your way.'*

Carlos Barrios, Mayan Elder

'I AM' Directed Focussed Light



The New Moon will take place on the 12th or 13th of December, depending upon where you live, at 20° Sagittarius 40.

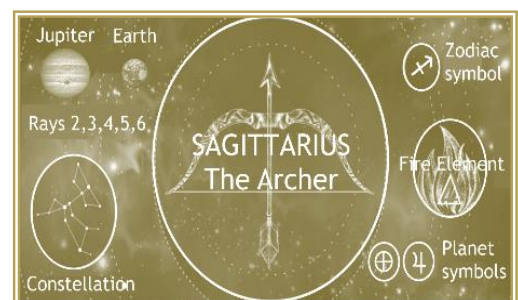
The Sagittarian Constellation has three Rays of manifestation that flow down through the Solar System onto and into the Earth plane – **Ray 4 - Harmony Through Conflict, Ray 5 - Concrete Knowledge** and **Ray 6 - Devotion and Idealism**.

Rays 5 and 6 assist in the development of moving beyond the entrapment of emotional conflict that underpins the shadow levels of the 4th Ray, in raising the consciousness into an awareness of a desire to embody a fundamental purpose whilst on Earth. It is this focused devotion to a cause, or to an ideal, that overlights the Sagittarian vibration.

Sagittarius is composed of the Fire element and is Mutable in nature. At the personality level Sagittarius is ruled by Jupiter which when combined with Fire and Mutability creates an open, optimistic, and expansive approach to life, which encourages the individual to go out and explore, to take in all manner of experiences, not always wisely, but through the influence of Jupiter, ruled by the **2nd Ray of Love and Wisdom**, these many pathways ultimately lead to Wisdom and understanding, eventually becoming a one-pointed orientation - focussed and directed in service to a higher goal.

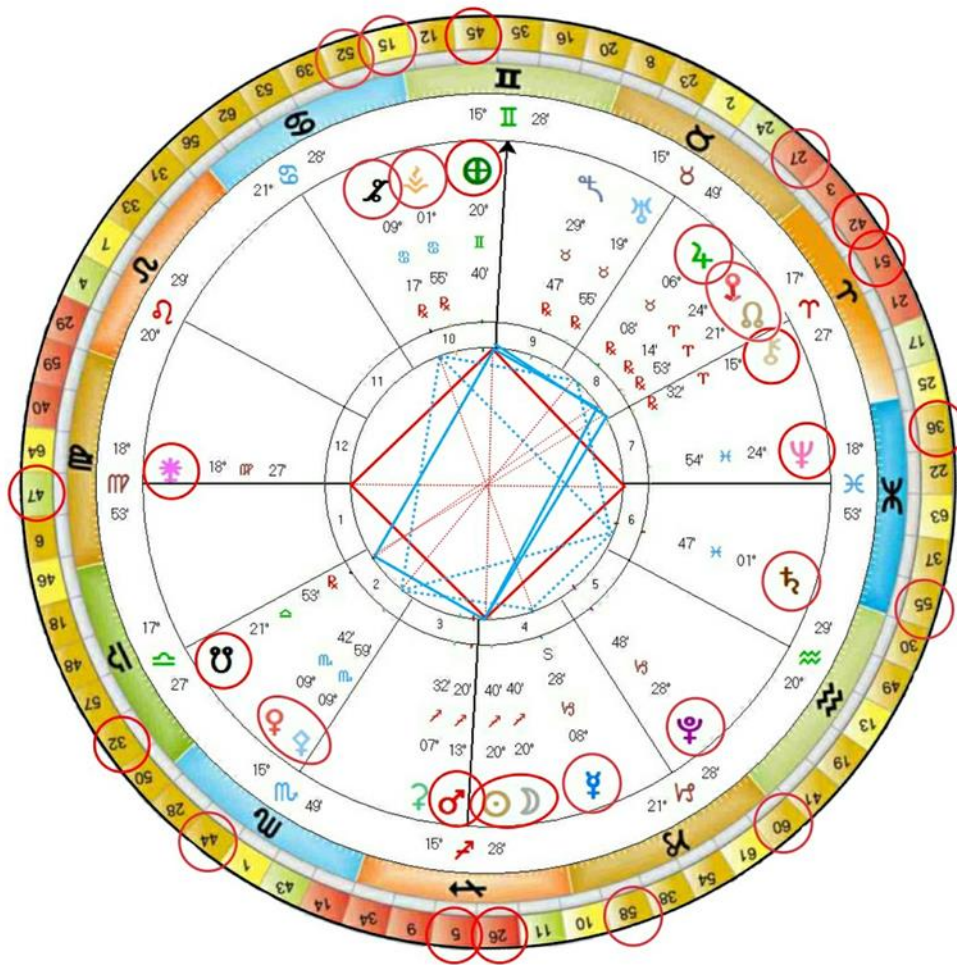
As the individual moves into Soul centred awareness, the Earth becomes the planetary energy that informs and rules Sagittarius, operating through the **3rd Ray of Active Intelligence**.

This creates a subtle shift of energy where the intellect becomes more and more refined, resulting in clear intuitive knowing and perception. It is in this state of intelligent resonance that Sagittarius can release a transformative impulse of Harmony through the **4th Ray**, bringing a resolution to internal conflict and duality which is then reflected in the outer world.



As this awareness becomes more and more stabilised the Sagittarian identifies and merges with higher Consciousness, no longer at the beck and call of the Astral Plane, and the ups and downs of duality, for the focus is now on serving humanity. It is the fusion of the Higher Mind with the Material Plane that creates a constantly expanding and uplifting vision, that anchors as Wisdom upon the Earth, assisting others on their journey of Self-realisation. The Arrow is now aligned and the Sagittarian Soul is revealed as an exemplar - a teacher and healer, passing on knowledge, Wisdom, and Love in ways that inspire and uplift humanity.

Chart for the Sagittarius New Moon December 2023



New Moon 12th December 2023 23:32 GMT London UK
<https://www.timeanddate.com/moon/phases/>

At the time of this New Moon there are four distinct planetary patterns occurring – a Mutable Grand Cross (*red lines*), a Mystical Rectangle (*solid blue lines*) and two Kites (*dotted blue lines*).

Looking first at the Mutable Grand Cross, the Sun ☉ and Moon ☾ opposite to the Earth ⊕ are 90° away from both Juno ♃ and Neptune ♆ revealing the Light held within this moment in time.

The Sun and Moon are on Gene Key 26, known as the **Sacred Tricksters** held within the **Codon Ring of Light**, moving through the Shadow of **Pride** to the Gift of **Artfulness** to the Sidhi of **Invisibility**.

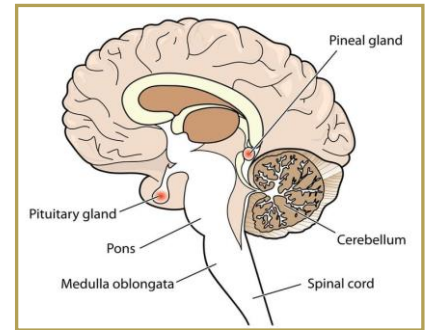
*‘Deep within the substructure of your physical body lies a set of four chemical codes whose role is to determine how your body captures, stores, and transmutes light waves into energy. **This role is housed within Gene Keys 5, 9, 11, and 26 - the Codon Ring of Light.** Depending on the frequency of Light you allow to enter your DNA, different biochemical processes are initiated.’*

*‘Your higher purpose can only manifest when you surrender your individual will to Nature as a whole. When you first come into contact with your higher purpose in life you will likely experience it as a subtle intention. At the Gift level, your attitude invites in a higher waveband of Light into your DNA. **Over time prolonged attunement to these frequencies results in a frameshift mutation within your DNA.** Through the Gift of Artfulness your ego actually becomes an art form. At this level of frequency, freed from fear, the 26th Gift sells itself through love. **This is heart marketing.**’*

'In order to transcend the ego, one must first have an ego worth giving up. When the ego runs wild as it does at the Shadow frequency it causes havoc. As you become aware of your ego, it releases its hold on you and you learn to play with it.'

'As you open your heart to life more and more, your thymus gland triggers a vibration of such refined intensity that it spontaneously ignites the higher functioning of the pineal gland. **The pineal gland opens a chemical pathway within your brain that allows you to access Cosmic Consciousness.** The 26th Siddhi dissolves all sense of individual will.'

'Everything in the Cosmos is driven by a single turbine and surrender to this impulse renders the individual ego Invisible – not just your own ego but everyone else's egos as well. **To dance with the 26th Siddhi is to let go of all agendas.** Such people are invisible in a way that most cannot understand. **They are invisible because they do not care what others project onto them.** They do not seek to enlighten anyone, they do not really want to influence anyone at all.'

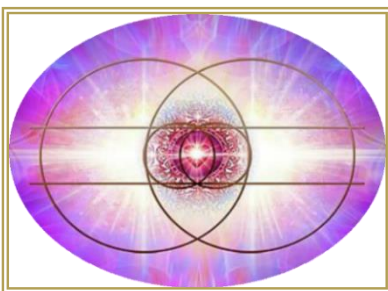


'Ironically, such people with no agenda have often left the greatest mark on the history of our consciousness.'

The Earth on Gene Key 45 is known as **Cosmic Communion**, moving through the Shadow of **Dominance** to the Gift of **Synergy** to the Siddhi of **Communion**.

'The 45th Shadow of Dominance lies at the heart of this whole evolutionary tendency to operate out of hierarchies. The human need to find a place of security in the hierarchical chain is based upon Dominance. **The repressive side of the 45th Shadow is made up of all those individuals who bow their heads to authority.** These individuals allow their spirits to be dominated by those higher than themselves within the hierarchy.'

'Beyond hierarchy lies a far more expansive concept. Synergy is a beautiful word – it can be applied across many dimensions and has many meanings. We come into Synergy when we are in a state of trust. **All the codons within us create a harmonic resonance.** It is like when a magnet is put beneath a piece of paper that is covered with iron filings. **Beautiful, organised patterns are formed, but the magnetic field itself is invisible.** The universe is like that; trust is like that. Synergy takes place like this at an individual level within the chemistry of our DNA, it also takes place collectively as we come into alignment with others.'



'Synergy, unlike hierarchy, recognises the need for both individual and group empowerment, so it operates at a far higher frequency than the hierarchical model. **The 45th Gift of Synergy requires a leap of faith out of fear-based thinking and control by a single person.** This leap out of the old fear-based territorial thinking will require that those who hold positions of power and authority have to risk giving their authority away. **For someone in a position of true power to give complete authority to another is to perform an act of pure alchemy.'**

'The traditional notion of Communion is rooted in the Christian rite of sharing bread and wine in memory of Christ's last supper. **When Christ spoke the words 'This is my body' he was speaking from a collective level.** Humanity is a collective body that is united through its bloodlines in a common ancestry.'

'In the 45th Siddhi all the various strands of human DNA finally come together. **It is the Cosmic gathering point for higher consciousness – Humanity operating as one Consciousness.** The Siddhi of Communion involves the direct imbibing of Divine Consciousness. In entering into this field of frequency, you are transcending all sense of being separate from others.'

Continuing on with this *'transcending all sense of being separate from others'*, we find Neptune prominent as part of the Mutable Grand Cross. At their height, both Pisces and Neptune link to the ephemeral, to the mystical, to the dissolving of boundaries, and to the expression of Compassion and unconditional Love. At lower levels of expression, confusion, deception and a sense of hopelessness and victimhood can arise – for all exist according to each one's level of consciousness.



Neptune, as the planetary ruler of Pisces, highlights and strengthens this archetypal message at this time, and indeed has done so since 2011, when Neptune moved into Pisces, where it remains in this Zodiacal sign until 2026, when it will then move, full time, into Gene Key 25 **Universal Love**. So, in many ways, these last years and the next few years are the final impulse of this Piscean Age, for the next time Neptune will be in Pisces will be in 2175 well into the Age of Aquarius.

These last 2000 years of the Piscean Age have been the seeding and teaching of Compassion with this present cycle of Neptune in Pisces, being the culmination of that two thousand year cycle, having passed through Gene Key 22 **Grace**, from 2019 to 2022 before moving into its current position on Gene Key 36.



Gene Key 36 known as **Becoming Human** moves through the Shadow of **Turbulence** to the Gift of **Humanity** to the Siddhi of **Compassion**. *'The 64 Gene Key Shadows provide the grist for the mill of all human suffering. Each Shadow provides a mythic challenge for humanity to move through.'*

The 36th Shadow is an emotional battle that must be fought by every individual at certain times during their life. The 36th Shadow is the Dark Night of the Soul. The potential suffering that exists on account of this Gene Key, is part of a genetic family known as the Ring of Divinity. This is a beautiful revelation, as each of the four Shadows of the Ring of Divinity, Dishonour GK22, Turbulence GK36, Weakness GK37 and Doubt GK63, has the potential to awaken the highest consciousness inside you. This codon group in many respects is deeply connected to the true meaning of Christ Consciousness.'

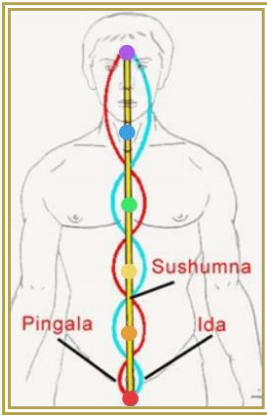
'As a living transmission, the 36th Gift carries a great teaching into the world – the celebration of Humanity. This Gift contains a natural spirituality – it is one of the most grounded of all the Gene Keys. It is a bridge for the higher bodies of humanity to move down into the lower planes and transform them. It conveys the image of Christ descending into hell and absorbing its frequencies fully into your own being. The deepest role of the 36th Gene Key is to help humans to become humane - it is their courage and deep acceptance of the life process that eventually gives rise to the highest of human expressions – the expression of Compassion.'

'This is the Siddhi that spans the chasm between Man and God, between being a victim and being enlightened. In every mythic journey, there must always be a final trial. A moment of utter hopelessness and helplessness – these moments – these Darkenings of the Light – come to us in life not so much to test us, but to cut us so deeply within our own humanity that we are reminded of the awesome power of our own Compassion for all beings.'

'Those in whom this Siddhi has awakened tend to keep moving into those areas of life where the light is most darkened. The simple presence of such people and the look in their eyes can trigger all manner of so-called miracles in those whom they meet. Beings like Jesus, who attain final liberation through this Siddhi, are salt of the earth people.'

'These are the most heart-melting people ever to walk the face of the earth. At the Siddhic level, your own suffering becomes so universalised that it encompasses all humanity. All boundaries of the self dissolve.'





Opposite to Neptune is the asteroid Juno. The archetypal energy of Juno, relates to the Sacred Marriage, the balancing, and integration of the Mind and Heart, the masculine-feminine polarity, the electro-magnetic impulse that flows through all Life. It is the middle path of the Sushumna that brings the Ida and Pingala, the subtle streams of energy that inform and flow through the endocrine system, into a state of union flowing through the pineal and pituitary glands.

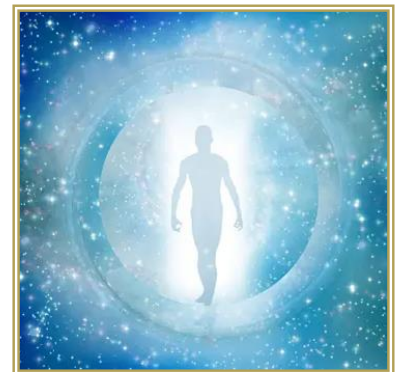
Juno is on Gene Key 47 known as **Transmuting the Past** moving through the Shadow of **Oppression** to the Gift of **Transmutation** to the Siddhi of **Transfiguration**. As we approach the end of the Piscean Age and the activation of the Aquarian Age, much is being released from the collective Consciousness for Transmutation, to allow for unimpeded access into Galactic Consciousness.

'The 47th Shadow is the storehouse of human karma. What we term as karma really refers to memory, but not memory as we commonly understand the term. This is genetic memory carried in our blood from our ancestral lineage. In genetics the 47th Shadow refers to what is called non-coding DNA or 'junk' DNA.

'The 47th Shadow is an access portal through which these deep memories/fears flow into our waking consciousness. This is why the ancient Chinese named this hexagram Oppression, because such fears become major burdens in our life if we do not face them directly. The bottom line with the 47th Shadow is that unless you face your own unique fear archetypes you cannot open the portal to inner Transmutation that is the 47th Gift. Only when you finally stop trying to avoid it, can it show you its magic.'

'It is through the Gift of Transmutation that the true purpose of your hidden genetic programming - the junk DNA - is finally revealed. Beneath what the left-brain scientists misread as chaos hides one of the great secrets of creation. When a human being faces his or her own Shadows, they open the door to the process of Transmutation. The alchemical process of Transmutation consists of an endless series of small mutations leading to a finite number of transmutations. These Transmutations are huge turning points in your life. To transmute is to make a quantum leap into a whole new dimension. This is the way of deep immersion in the currents of life - it is the way of surrender.'

'The 47th Siddhi reveals the ultimate purpose of the non-coding DNA within the body, which actually does code for a process within the physical body. The Life of Jesus Christ is in fact the perfect mythic enactment of all the stages of alchemical transmutation ending in this state of Transfiguration. The force of transmutation strips you emotionally and mentally to such an extent that it eventually reaches down into the physical matter of your body. The power of the myth then takes over and the very cells of your body begin to transmute into the pure light frequencies from which they are made.'



'This is the Unio Mystica or Sacred Marriage in which all your constituent elements dissolve back into one another and out of your base matter symbolic gold is formed. Humanity stands upon the threshold of one of its great Transmutations. As each individual faces, embraces, and transmutes the collective fear that lies within the heart of every human's DNA we are Transfigured by Divine Grace - accessing the Divinity that lies within each and every one of us.'

Gene Keys 26, 45, 36 and 47 are the prime focus and dynamo at the time of this New Moon, but equally, the Mystical Rectangle which also connects into the Sun, Moon, and Earth is assisting the potential at this time. The Mystical Rectangle is activating the North Node ♁ and South Node ♃ along with Eris ♁ Chiron ♄ and Mars ♂

As for last month, the North Node and Eris remain on Gene Key 42, and the South Node remains on Gene Key 32. They embody the need to transmute any sense of separation and fear of death, that is held within the group consciousness, and to remember the continuity and the truth of our Unity with all of Life.

Gene Key 42, known as **Letting Go of the Living and Dying** moves through the Shadow of **Expectation** to the Gift of **Detachment** to the Siddhi of **Celebration**



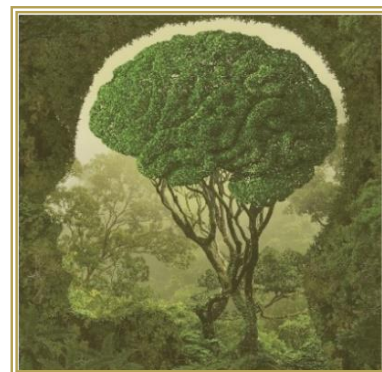
'The 42nd Siddhi is about the transcendence of death. These are the sages who teach humanity about the illusion of death. They do not teach us through knowledge but through their attitude. This is a state beyond Detachment. The transition from the Shadow to the Siddhi, from Expectation to Celebration, does not occur within time. Whilst our physical form may decay and 'die' the essence of our consciousness is timeless, fluid, playful, and unpredictable.'

'Eventually, there must be a complete letting go. This is what initiation calls out of us, and there are levels of endings as well. The Codon Ring of Living and Dying contains the codes to unpick the mystery of how and when the Spiritual Essence, the Soul, enters and leaves the form, the maya, the body.'

'It is funny that we generally only celebrate things at the beginning or the end. We don't usually celebrate something in the middle, but this Siddhi is about celebrating in the middle. It is about every moment becoming a Celebration.'

Gene Key 32, known as **Ancestral Reverence**, moves through the Shadow of **Failure** to the Gift of **Preservation** to the Siddhi of **Veneration**.

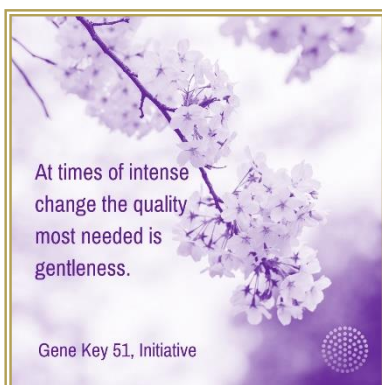
'As we move into the 32nd Gift as a species, we will once again return to Nature. As we rise above the fear and move beyond the selfish tendencies found in the Shadow frequency we become defenders and preservers of our Earth. As we learn once again to honour where we have come from, the Earth will teach us how to move in harmony with its natural rhythms and cycles.'



'The 32nd Siddhi is the state of Veneration. It is all that remains when fear has burned away. Veneration is the state that occurs when you see and know your place within the great Living chain of Life. Veneration is about being on a spiral ladder. You stand on the shoulders of those who have come before you and you allow those who will go beyond you to stand upon your shoulders in turn. Veneration is rooted in respect, reverence, and gratitude for all aspects and forms of the One Consciousness behind Creation.'

Chiron, which is conjunct the North Node is instrumental in bringing more Light into the cellular system, remains on Gene Key 51, moving from the Shadow of **Agitation** to the Gift of **Initiative** to the Siddhi of **Awakening**.

'The 51st Gene Key is a portal – the portal through the Shadow frequency leads to hell whereas the 51st Gift leads to a place of great personal empowerment and genius. To follow your Initiative is to step off the beaten track and to follow the dictates of your own inner being. It is not possible for a human being to awaken without first stepping fully into their creative independence.'



'They close the book on all previous teachings and wisdom in order to discover what their individual truth is, rather than anyone else's. These people come to awaken the collective consciousness out of its fear-based modality. They are not leaders – they are initiators. 'Awakening occurs to someone, who is so much themselves, that it has no choice but to occur.'

'Each of the 64 Siddhis has its own particular behavioural pattern of awakening, but the 51st Siddhi is the ground beneath every one of these 64 codes. The 51st Gene Key is part of the Ring of Humanity and this Gene Key ensures that one day all of Humanity will awaken.'

'In times to come this Siddhi will begin to awaken entire gene pools. There will come a time in which relationships will awaken, then families, then entire communities until finally humanity will awaken as an individual Cosmic Being and will see its own true nature. That single moment when humanity opens its true eyes for the first time will be the greatest single event in the history of Awareness itself.'

Mars is completing the Mystic Rectangle on Gene Key 5, known as ***The Ending of Time*** evolving through ***Impatience*** to ***Patience*** to ***Timelessness***.

'It is the 5th Gene Key that really forms the backbone of the 64 Gene Keys. Containing all the codes and patterns of life the 5th Gene Key represents the great digital library of consciousness in form, all concealed within every single living cell. The 5th Gene Key is one of those Gene Keys that is found in all life forms since it alone maintains the rhythmical patterns that allows an organism to stabilise within its particular environment. It is the pulse of Life.'

'Impatience is not a natural feature of human character – it is the result of a loss of your natural rhythm at a biological level. The core feeling is that all is not as it should be. Underlying this Shadow is a deep fear that time is running out.'

'Patience is the natural ground of your being whereas impatience arises out of fear and conditioning. Patience is about trust. If you trust in life, you will trust life in every moment, even the challenging moments, and in so doing you will always remain in the flow. As a vital element of the chemical family known as the Ring of Light the 5th Gene Key plays a profound role within your genetics.'

'The amino acid, threonine determines the blueprint for how your individual cells trap light and convert it into energy. The more you are able to settle into a deep trust and Patience with the rhythm of your life, the more your heart will open and the softer and more yielding you will become in your attitude to everything and everyone. You will begin to discover a higher functioning of your DNA – a code within a code. Through the magnetism of your living aura you draw in or limit the frequencies of light deep into your cellular structure. The more openhearted you are the more you magnetise higher frequencies into your DNA.'



'To live an open-hearted life is to operate at peak health and, therefore, override any genetic predispositions, as outlined in the map of the human genome. Here at the highest Siddhic frequencies, codes can no longer be unlocked digitally, which means to say that the mind cannot comprehend them. Only the human spirit can unlock the deepest secrets in your DNA. It is in the 5th Siddhi that the great secret known as Enlightenment lies waiting. The highest code can only be awakened by the flood of high frequencies contained within the Spectrum of Light.'

'The more you open yourself to the higher frequencies of Light the more heightened the vibration becomes within your cellular DNA. At the 5th Siddhic level, Patience itself is completely transcended and something wonderful happens - you as a separate entity cease to exist! Awakening usually occurs in a rhythmic manner in that your body is periodically flooded by higher Siddhic frequencies prior to full blown Enlightenment.'

'As you approach the Siddhic threshold, the frequency of your body begins to approach the speed of Light and when your frequency does register at the speed of Light, Time finally dissolves and Pure Being is experienced within a state of Timelessness.'

Finally, there is a Grand Trine that is formed between Astraea♁ and Vesta♃ which are 120° away from both Saturn♄ and Venus♀ conjunct Pallas Athena♁. This Grand Trine then creates two Kite Formations. Looking at the Grand Trine first we find Vesta is on Gene Key 15 and Astraea is on Gene Key 52. Astraea holds the memory of a Utopian Golden Age and Vesta reminds us of the Pure Cosmic Light that is held within each one of us deep within our DNA – the Flame that is waiting to burst into Flower.

The combination of these two Keys encourages us, and teaches us, to slow down and to come into an inner Stillness. This inner Stillness is the opening and the foundation for uniting Heaven on Earth.

Gene Key moves through the Shadow of **Dullness** to the Gift of **Magnetism** to the Siddhi of **Florescence**.

'Magnetism is a frequency that moves far more slowly than most human beings are used to, especially in the modern world. The 15th Gene Key is such a powerful portal into life's mysteries. It is one of the Gene Keys that bridges humans with other life forms and in doing so it connects us profoundly to the living spirit of nature or Gaia.'

'One of the greatest challenges for modern humanity is to learn how to slow down. Trusting the natural ebb and flow of life's currents, the people embodying the Gift live closely with the Earth's natural rhythm and experience the wisdom and clarity of slowing down. There is a subtle shift in attitude that unlocks the hidden magnetic force in your DNA. Harnessing the power of the natural world and magnetizing resource you begin to unlock the power in your aura to transmit and receive information between different life forms. **Eventually as the frequency of your aura comes into perfect resonance it interlocks with the Earth Grid and your consciousness expands exponentially, becoming one with Gaia herself.'**



'Florescence as a word goes much further than the word flowering. Florescence refers to a process of exponential bursting into flower – as though the focus is not simply on a single flower, but an entire tree of flowers all bursting into bud at the same time. Florescence is the ultimate flowering of your higher Self. It is a state that occurs to humans sporadically, no one can predict if or when it will occur to a particular person. **However, when it does arise that person is surrounded by light, magic and a tangibly magnetic aura.** As the zenith of human magnetism, Florescence manifests like a supernova through the human aura, and once begun it keeps expanding and expanding into deeper and deeper dimensions.'

'Florescence depends upon nothing. It cannot be created - not by meditation, good karma or by any form of effort, not even by effortlessness. Florescence is Grace. It occurs whenever and wherever it feels like occurring! This experience of Grace ends all seeking. It is an experience that is too spontaneous, too unpredictable and too wild for the mind to manage or control.'

'Florescence is the explosive chain reaction of enlightenment - it follows Nature's own wild organic rhythm. When you come into perfect alignment with Gaia, then, in the words of Christ, you mystically "Inherit the Earth".'

Astraea on Gene Key 52 known as **The Still Point** evolves through the Shadow of **Stress** to the Gift of **Restraint** into the Siddhi of **Stillness**.

'The 52nd Shadow is responsible for one of the great phenomena of the modern world – Stress. This 52nd Shadow and its programming partner the 58th Shadow of Dissatisfaction represent the deepest genetic binary pattern that undermines human health. Stress is a collective pressure, not a personal pressure. It is an energy field generated by every human being alive.'

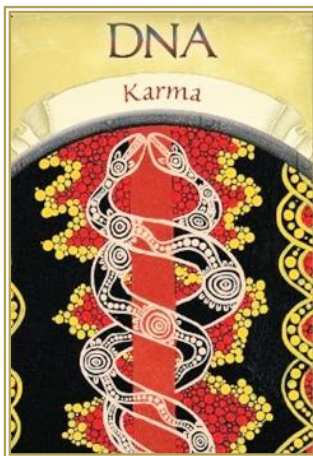
'No Gene Key is more fundamental to human life than this 52 Gene Key – it strikes a balance between two extremes of energy – activity and passivity. Restraint does not sound particularly exiting or dynamic, but this Gift has the potential to slow down time – to take the Stress out of the environment. At its deepest level, it contains the seed that will one day bring all human beings into a perfect organizational unity.'



'The Gift of Restraint is about non-interference. When you apply this to your own life, you have to accept yourself as part of a far greater flow than you can see and as such you have to accept that there are times when you will feel deeply restrained. **To live this seed fully you must ask yourself 'How can I be of the greatest service to humanity'.**

*'When a being attains realisation through the 52nd Siddhi, some intriguing things occur. Since all frequency and energy patterns are experienced as stopping you find yourself sitting at the heart of all creation. **The incredible sheath of fear and stress created by the world aura can no longer touch you.** Along with this Stillness you experience the 58th Siddhi of Bliss, the programming partner of the 52nd Siddhi. These two great Siddhis mirror one of the great Universal concepts of geometry and physics – the torus. Within the human DNA, the torus at the heart of all being is directly experienced through the state of enlightenment which unites Stillness with Bliss. **Stillness and Bliss are derived from a higher functioning of your genetics.'***

*'At the Siddhic level adrenaline is transmuted into rarefied hormones and neurotransmitters that induce Bliss and Stillness throughout the body. **This influx of Stillness into our planetary aura will allow millions of people to follow the true destiny into far wider service of the whole.'***



Venus and Pallas Athena are both on Gene Key 44 known as **Karmic Relationships** with the Shadow of **Interference**, the Gift of **Teamwork** and the Siddhi of **Synarchy**.

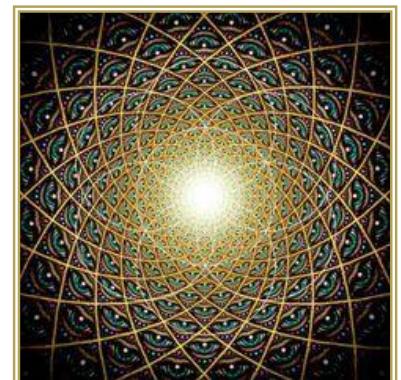
*'The 44th Gene Key concerns a little understood subject that underpins the structure of human societies as well as the science of reincarnation. **The ancient Chinese called the 44th Hexagram Coming to Meet, which is of course highly appropriate since this 44th Gene Key concerns how, why and when people meet each other, as well as the results that emerge from group or family dynamics.** As you learn from each relationship in your life and over time come to master the lessons each affords you, then the frequency of your entire hologenetic profile heightens in pitch and you begin to attract higher frequency fractals.'*

*'The term human fractal is an extension of this notion to human relationships, referring to the web of invisible patterns that bind certain groups of people together. **In the classical Indian teachings, such ties are known as Karmic ties.** Until two individuals are ready to take on the Ancestral Interference patterns of their entire fractal, that fractal remains dysfunctional, but as it clears a deep devotion develops. The moment we begin to see relationships appearing in the world without Interference patterns, we will know that the core human fractal/consciousness is rebuilding itself from the bottom up. **Couples who are actively involved in clearing out this collective genetic dysfunction are the pioneers of a coming new age.'***

*'To really understand this Gift of Teamwork you also need to understand something of the mechanics of incarnation. **Your Causal body, or Soul, which vibrates at a very rarefied frequency also travels with the Causal bodies of others across space and time in a cosmic relationship dance.** Such fractal lines of evolution have been understood through the ancient laws of karma. The Gift of Teamwork is, therefore, about recognising who belongs in your life. If you were able to assemble your own true fractal around you the dynamics of this team would be nothing short of awesome. There would be total trust within the group. **The world has not yet seen much of the 44th Gift, however, all that is on the cusp of changing.'***

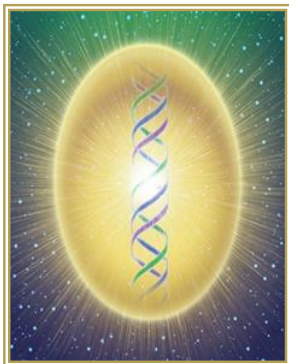
*'Synarchy is the opposite of anarchy - it concerns the concept of collective rulership. **The 44th Siddhi sees the entire tapestry of human interaction through time and space.** It not only sees it, but this being dissolves into it. The consciousness within such a person is able to travel down every single fractal line within the Cosmos.*

'Because there is no resistance within their vehicle their consciousness ripples down the fractal arms of both the past and the future of the Universe. The being expressing the 44th Siddhi therefore occupies a specific genetic vehicle whose mutation causes, in time, a chain reaction through humanity.'



'Synarchy has existed since the dawn of time. It is simply distorted by an interference pattern – this distortion or sacred wound is literally wound around the arms of every single fractal line. It is the reason for human suffering, but as the Universe awakens the Interference is gradually cleared and the Synarchy that lies beneath emerges. Humanity has always sensed the existence of Synarchy – it is in all our myths of a past Golden Age and our present desire to create Heaven on Earth.'

Saturn, which is the planet of initiation and manifestation, completes the Grand Trine, and is on Gene Key 55 moving from the Shadow of **Victimization** to the Gift and Siddhi of **Freedom**.



'The 55th Gene Key holds the key to our liberation and Freedom. Our DNA holds our greater Self – the Cosmic part of each of us that transcends our mortal body has lain secretly hidden inside humanity for aeons. The 55th Gene Key allows us to contemplate and to quicken the actual process of awakening. Up until now, the inner journey has been for the select few – those bold adventurers and courageous pioneers of the inner planes. But that is all about to change.... With the coming shift of consciousness that is unfolding through humanity we will slip through the strands of the emotional net that has kept us in a state of Victimization for so long.'

'As we begin the process of transcending our Shadows, miracles can occur in our lives. Much of the 55th Gene Key concerns the future of our species as it moves through the Great Change. Down the centuries much has been written, spoken and taught concerning the nature of higher consciousness. We are now entering an era in which more and more people will have direct access to an experience of true higher consciousness.'

'There will be a genetic mutation that will slowly colonise our species. The old human will literally be bred out of humanity. Soon there will be children born among us who carry the full mutation and who will spread it through the gene pool.'

'The more we contemplate Freedom, the more our life will show us where it isn't. Like Buddha we have to exhaust ourselves in the search. Yet as we search, lifetime after lifetime, in this teaching, in that teacher, in that realm of pleasure, that realm of pain, something inexplicable and infinitely subtle occurs. We gradually begin to drop stuff and become more and more open. Slowly, slowly we become lighter.'

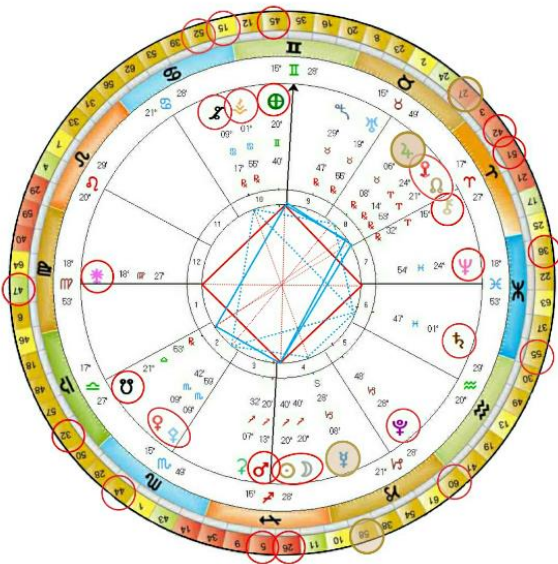
'The 55th Gene Key is about Sacred Union/Partnership, which is why the awakening of the 55th Gift is about relationships. The coming shift will precipitate the end of the age of the individual 'I' and the beginning of the collective 'We'. After the awakening has occurred one will no longer exist as an individual.'

'Awareness will operate collectively. The early shattering of the sense of separateness will take place through intimate relationships. These Sacred Marriages will have an unbelievable energy field around them – they will naturally rise in Love from a position of Pure and Divine Union – both sharing the same auric field. We stand on the cusp of a Siddhic supernova – the incarnation of the Divine Feminine spirit.'

The end result of this inflowing of the Divine Feminine will result in the purification of all the fractal lines throughout humanity, resulting in a burning up of the collective karma in our DNA and the eventual eradication of all disease on the physical plane. Through the 55th Gene Key we can all take heart. It is where the change lies. All human beings will eventually realise this state of inner Freedom.'



To complete the major planetary patterns that are occurring at the time of this New Moon, as said earlier, this Grand Trine creates two Kite Formations via the planets of Mercury ♀ and Jupiter♃ which are at the apex of the Kites.



Mercury, the planet that links to communication and to our Central Nervous System, is opposite to Astrea and Vesta and is on Gene Key 58 known as **From Stress to Bliss**.

Gene Key 58 moves through the Shadow of **Dissatisfaction** to the Gift of **Vitality** to the Siddhi of **Bliss**.

'The 58th Shadow of Dissatisfaction is very unspecific. It is a lack of fulfillment rooted in the programming partner of this 58th Shadow, the 52nd Shadow of Stress. It doesn't refer directly to a particular emotional state such as sadness, boredom, or frustration, or to a mental state such as anxiety or worry. It simply implies a lack of joy and a deep sense of restlessness or unease.'

'The moment you accept your plight as a human being eternally driven to seek fulfillment in the future, everything in your life changes. The energy that has been seeking an outlet into the world through your Dissatisfaction is turned back upon itself, which forces it into the atomic structure of the body. The result is a kind of implosion of inner vital force, which catalyses micro processes within your physiology – in short you begin to become yourself once again. At the Gift frequency Dissatisfaction now begins to turn into joy.'

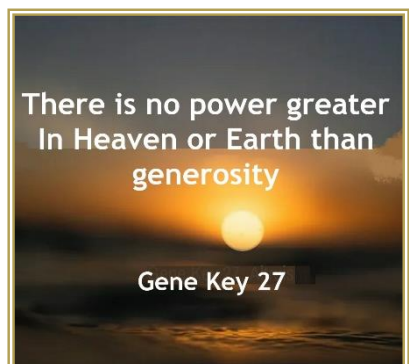
'This joyousness lies within every human being and is nothing short of Life expressing itself without resistance – it is the evolutionary urge to become self-aware. Your mind becomes quieter – your relationship to the future changes – this can be a time of intense physical transformation. When the frequency of this Gene Key hits the Gift level things tend to happen very quickly in your life. Not only does your life take on a new shape, but a far deeper process overtakes you – the process of moving into the heart. The future of human evolution truly lies in the ideal of service. The Joyousness we seek as individuals is intimately tied to the joyousness of the collective – this is why the 58th Gift's delight is to work so tirelessly in that direction.'

'As your identification with the future progressively loosens, you are brought more and more deeply into the present moment. As the frequency of your Vitality attains a higher and higher pitch, at a certain point it peaks and catalyses a spontaneous shift in awareness. This vital force burrows so deeply into your being that it triggers a process within your DNA known as enlightenment. When Consciousness comes, it comes into you like a flood wiping you clean in less than a microsecond. It is one of the greatest mysteries of existence'

'No matter what one thinks does or says the experience of enlightenment cannot be attained through seeking – whether Bliss or Honour or Illumination, each Siddhi state is outside of our grasp. The Siddhi of Bliss cannot be hidden or contained in any way, but radiates out from the very pores of one's Being. Finally, you realise that the Siddhi is present within the Shadow just as the flower is present at all times in the seed.'

And finally, Jupiter, the planetary ruler of Sagittarius, which seeks to expand our openheartedness and generosity, through a journey of exploration and joy, is on Gene Key 27 known as the **Food of the Gods**, moving from the Shadow of **Selfishness** to the Gift of **Altruism** and ultimately to the Siddhi of **Selflessness**.

'The 27th Gene Key is truly vast in its implications at a planetary level. The ancient Chinese called this 27th Gene Key Nourishment with good reason. It represents a built-in planetary law that rules all sentient life – To Give is to Receive.'



There is no power greater
In Heaven or Earth than
generosity

Gene Key 27

*'Selfishness must be transcended in order for the next form to mutate out of this existing form of Homo Sapiens. **Selfishness, then is a stage in our evolution that is in the process of being transcended at a collective level.** Thus, our species must prepare itself to make a genetic quantum leap, because that is the only way that it can truly transcend its built-in selfishness.'*

*'In humans, Altruism ensures our survival as a species. **The true nature of the 27th Gift is generosity, which is primarily about caring for others and nature generally.** At a high frequency level, the 27th Gift gives off a powerful aura of trust which is immediately felt by others. **Such an aura of trust allows others to let down their guard and open themselves up to nurturing, sometimes for the first time in their lives.** At a deep genetic level, the presence of this 27th Gift engages a feeling of communal security through its strong resonance to the group mind. **As such it is one of the most powerful healing Gifts in the whole genetic matrix.'***



*'Selflessness is an absolute pure yearning to provide succour to others. There is no sense of self-consciousness in it. **Such people have made a quantum leap and the Siddhic energy available to them is enormous.** Despite endlessly giving of themselves to others, they are not depleted, but are continuously nourished by the refined currents of the aura of Love surrounding them.'*

*'**The Mathematics of Love are built into the structures of all life but only when we discover these laws will human beings realise their highest potential.** Inherent in the 27th Siddhi is the realisation of the Divine law of Philanthropy – the Love of Humanity. **At the Siddhic level this Gene Key becomes capable of miraculous healing.** As long as there is an ounce of life force within something, the vast love coming through the 27th Siddhi can revive it.'*

*'**A mutation in human DNA presupposes a whole string of interconnected mutations throughout the chain of life.** If we change, the whole of Gaia change with us. The gift of Altruism precipitates the beginning of such a change. It is not something we can impose from the outside, but a quality that must emerge organically from the inside, and as it does, it will begin to allow our DNA to mutate and uncover its higher functioning.'*

*'**The 27th Siddhi represents the possibilities of spontaneous healing not just within the human life form, but in all life forms.** Because this Siddhi draws upon the entire bio-energetic field of Gaia it has the capacity to heal any disease or sickness.'*

The qualities that underpin this immense mutation and evolution are to be found in the simple eternal Truth and Wisdom held within all teachings, and philosophies, that of embodying Love, Respect, Tolerance, Sharing, Gratitude and most of all, Forgiveness towards all Beings. This message which has been passed down through the ages by all the saints and sages is waiting to emerge as we open our hearts and activate the Codon of Light

All Love and Blessings.