

Cosmic Overview

Virgo New Moon 2024



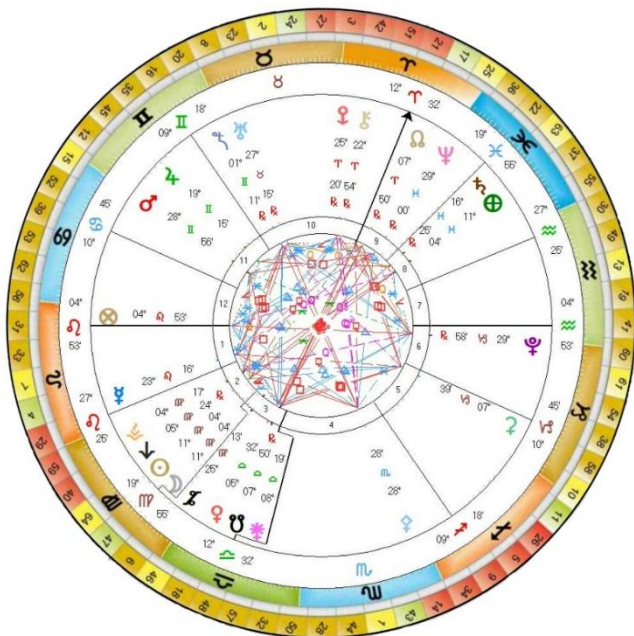
Gravity may put the planets into motion, but without the Divine Power, it could never put them into such a circulating motion as they have about the Sun.

Galileo

Choose to trust that there is a greater plan for you and that if you surrender, it will be unfolded in time. Surrender is a gift that you can give yourself. It's an act of faith.

Anon

‘I AM’ the Blended Dual Light



The New Moon will take place on the 2nd or 3rd of September, depending on where you live, at 11° Virgo 04.

The New Moon in the Virgoan Constellation flows through the magnetic/feminine pulse of the **2nd Ray of Love and Wisdom** and the **6th Ray of Devotion**. The purpose of Virgo is to purify and cleanse the emotions and thoughts in order to prepare the physical form so that it is more receptive to Light.

The Virgoan essence is all about the refining of the ego so that the Light that is held within the physical structure can not only be received, but also revealed. In this day and age when the focus is so much upon the outer façade, the image, and the ego's projection, Virgo offers a counterbalance. For Virgo represents the Inner Light at the centre of all sentient beings.

When we think that the world revolves around us, and that the Earth is the central and only planet of any importance, within the Galaxy, then we have truly shrunk our vision, and have forgotten who we are and the purpose for our Being here at this time. It is this misguided and inflated hubris that is creating so much of the discordance and chaos on the planet at this time.

Virgo is of the Earth Element and mutable, which gives a grounded yet fluid and balanced approach to all that Life presents. It encourages self-reflection and spring cleaning which ultimately strips away the dross to reveal a transmutation that is internal and ongoing.

There is a close affinity between Gemini and Virgo in that they are both ruled by Mercury, the planet of Communication, and equally, the **4th Ray of Harmony Through Conflict**. They are also both the vehicles for the externalization of the **Second Ray of Love and Wisdom**. It is this blend of the two Constellations that allows all forms of Life the opportunity to express the essential quality of Love, which is the Consciousness of our Solar System.

Djwhal Khul expressed this very clearly:

'When Mercury, the Divine Messenger, the principle of illusion, and the expression of the active higher mind, has performed his mission and led humanity into the Light and the Christ-child out of the womb of Time and of the flesh, into the Light of day and of Manifestation, then the task of that Great Centre we call Humanity will be accomplished.'

Service is central to the essence of Virgo, a blending and synthesis of the material and spiritual born from out of the void - for Virgo symbolizes the depth and darkness in which the Light is protected. The root name for Virgo has links to an Atlantean name that was applied to the Mother Principle.

Virgo in her three aspects of mind, emotion, and body, like a Mother, gathers in the proper nutrients that will feed the growth of her Soul. When this synthesis has been accomplished Life is lived as an act of Love, a healing Presence that is centred in the Oneness of Life, devoted to the Universality of humankind.

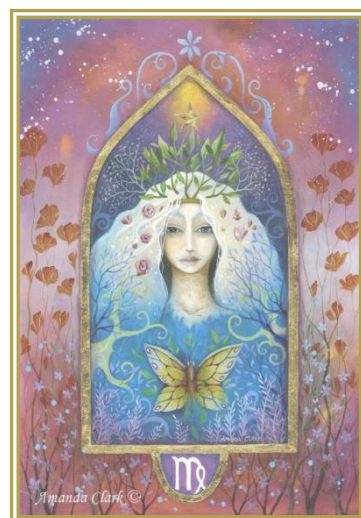
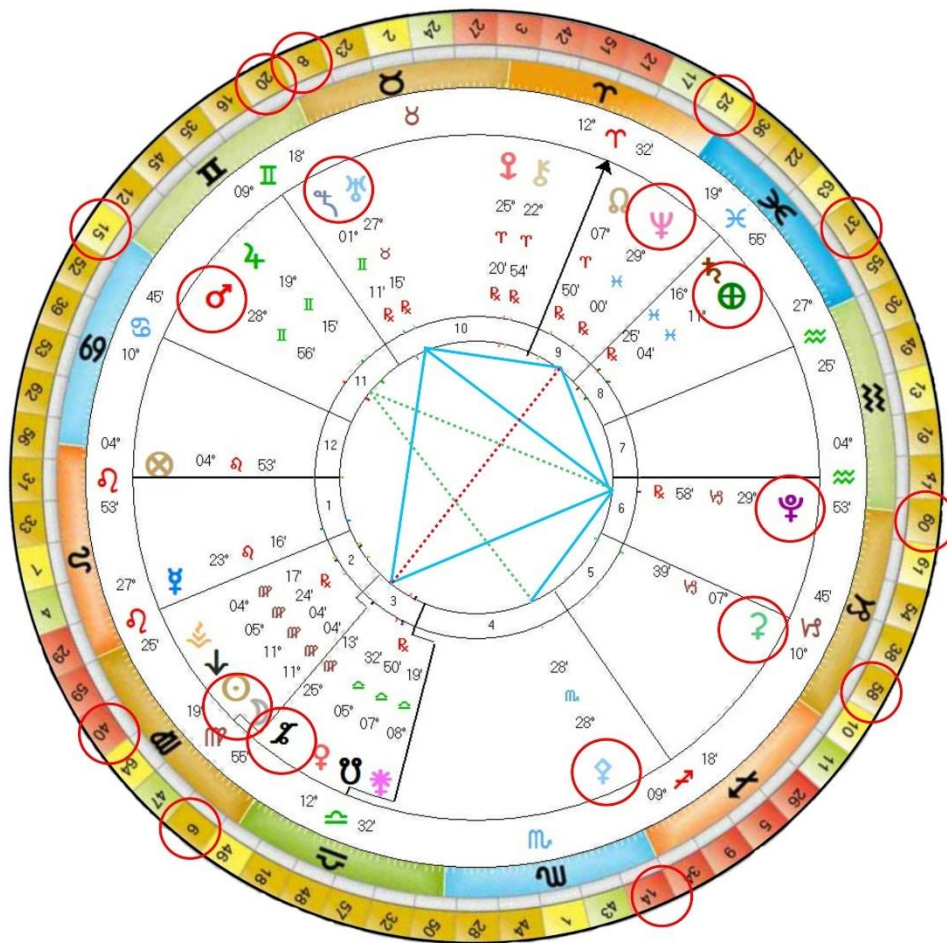


Chart for the Virgo New Moon 2024



The New Moon 3rd September 2024 02:56 am BST London UK

<https://www.timeanddate.com/moon/phases/>

Looking at the above chart you can see that there is a Kite formation along with a Yod, or 'Finger of God', formed at the time of the New Moon. Before looking at these, however, it is best to first look at the position of the Sun ☉ and Moon ☾ and Earth ♁ at this time, for although they are not part of the two planetary patterns they are holding the essence of all that is unfolding at this time.

The Sun and Moon are on Gene Key 40 known as **The Will to Surrender** moving through the Shadow of **Exhaustion** to the Gift of **Resolve** to the Siddhi of **Divine Will**.

'The 40th Gene Key and its Shadow concern the correct or incorrect use of the power of the human will. **We live in a time of exhaustion. We live in a time of excess.** We are exhausting our resources, our morals, our Souls.'

'This Gene Key is a special one, it is a direct route to the Divine inside us. But we have forgotten how to be quiet, how to be simple. **We overwhelm our senses with stimulus.** This Gene Key is about learning not to waste energy and time – it requires that we see how widely we have spread our energies.'

'When you activate the 40th Gene Key at a higher frequency, Exhaustion becomes a thing of the past. **When your life force is aligned you will discover that there is a vast amount of energy available to you.** Everything about this 40th Gene Key is about having boundaries and in order to create boundaries you have to be able to deny other people access to your energy. You have to be able to say No. The correct use of this kind of isolation ensures that neither your energy nor your resources become depleted.'

'The 40th Gift of Resolve is ultimately about deep physical relaxation.'

'True Resolve is not possible unless you know how to relax. Rest allows the physical body to restore – relaxation allows all the subtle bodies to recharge as well. With Relaxation our Mental and Emotional health are assured. Resolve is more than just willpower or determination it is the flowering of your aloneness - for the 40th Gift thrives on solitude - the source of all your power lies in your love of being alone. **Every human being has to finally learn from this Gift of aloneness or of 'all oneness.'**



'At the highest frequencies the Gift of Resolve becomes transformed into pure Divine Will. In mystical understanding the qualities of the Divine are divided into three main Cosmic organs – Divine Mind, Divine Heart and Divine Will. Divine Will is seen as the primary faculty out of which the other two emerge.'

'Behind this Gene Key lies something extraordinary. This is the Codon Ring of Alchemy, a group of Gene Keys that you might describe as the Guardians of Divinity. **The four Siddhis in the Ring of Alchemy are GK 6 Peace, GK 47 Transfiguration, GK 64 Illumination and GK 40 Divine Will.'**

'The four Gene Keys in the Ring of Alchemy will transmute your DNA so that there is no longer any interference in your physical body – this means that your highest subtle bodies can manifest directly through your physical body. That is the real meaning of complete physical relaxation, it is a state beyond the comprehension of your mind. **It is the direct manifestation of Divine Will. These four Siddhis all describe direct paths to the Divine.'**

And the Earth is on Gene Key 37 known as **Family Alchemy** moving through the Shadow of **Weakness** to the Gift of **Equality** to the Siddhi of **Tenderness**.

'Much about this 37th Gene Key concerns the nature of a force that is perceived as weak but that inevitably shows itself to be the opposite. It links closely to the Piscean Age that we are now leaving. **The 37th Shadow represents the inequality between yin and yang forces on our planet.** The natural tendency of evolution has been to favour the physically stronger – at low frequencies our genes know no other reality than the survival of the fittest.'

'However, now we have reached a stage in evolution in which physical strength no longer governs our future direction. The 37th Shadow is undergoing a major mutation and through the inner rebalancing within the human psyche the fabric of our society is being forced to change.'



'This uprising of the Yin force is beyond gender – many women today are under the impression that the time for women is coming and the time for men is over – this attitude is simply another form of the 37th Shadow which always over-emphasises one aspect of the polarity. It is in the human heart and its ability to grasp the holistic essence of life that our true collective future lies. In an individual human being this change translates as the mind serving the heart.'

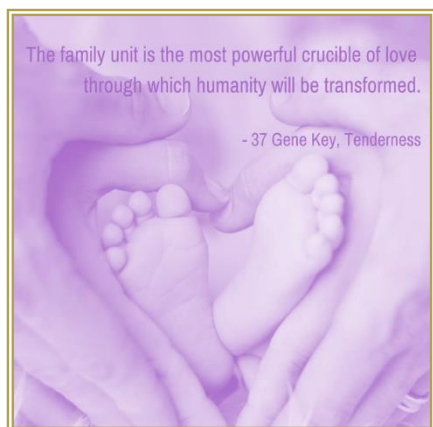
'It is in the 37th Gift of Equality that a great hope is presently arising for humanity. Equality is a living ideal that lifts people out of the game of victims and winners or strength and weakness. When you operate out of this Gift you are living directly out of your heart and all else is secondary. **The human heart carries this equalising force wherever it moves and eliminates divisions in others by treating everyone with respect.'**

'The mind fears that Equality will create a world in which everyone is the same, however true Equality is based upon respect for individual uniqueness – indeed it thrives on it.'

'It is through the love of your Self that you will find your love of others. To give to yourself in this way means to trust completely in the wisdom of your heart. Experienced as friendship, the 37th Gift is the glue that holds humanity together – it is a unifying force that will bring an end to the notion of separate communities based on an external God or authority.'



'The 37th Gene Key represents an evolutionary phase that is now coming to an end, which means that something new must also be born from it. The Christ myth must give birth to another dimension and this dimension concerns the role of the feminine archetype. The 37th Siddhi is the Siddhi of Tenderness and Tenderness is a quality most often associated with the exchange of Love between a parent and child. Tenderness in particular is an archetypal motherly essence.'



*'Jesus himself is universally connected with the figure of the lamb whose essence is represented by this 37th Siddhi. **We, humanity, are the lamb and the Universal Spirit holds us in Tenderness, as a Mother cradles her child.** As we move beyond the tribal and blood definitions that have dictated our traditional lifestyle for so long, we will see how limiting our current definition of family really is.'*

'The 37th Siddhi is an upsurge of consciousness that will slowly unite human beings as the 55th Gene Key frees us from our victim consciousness. Tenderness is a force to be reckoned with and as its programming partner the 40th Siddhi of Divine Will testifies, it is a force that has us a set in its sights. In its very softness it is insurmountable, invincible and inevitable.'

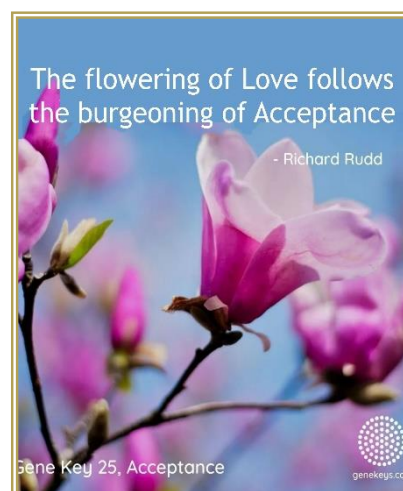
Looking at the Kite formation, Neptune ♆ is at the pivotal point holding Uranus ♅ Sedna ♁ Pluto ♇ and Astraea ⚞ in a harmonious alignment. As for the last New Moon, Neptune is sextile to both Uranus and Pluto and all remain on the same Gene Keys. All three are transpersonal planets - Neptune linking to the Higher Heart - on Gene Key 25 known as **The Myth of the Sacred Wound**, passing through the Shadow of **Constriction** to the Gift of **Acceptance** to the Siddhi of **Universal Love**.

'There are certain Gene Keys which occupy a central seat in the genetic code and story of evolution. This 25th Gene Key is one of those. It is a hub Gene Key. We might even say it is the hub Gene Key. It's theme is love. It is the very breath of Love. It is also about lack of love and the journey to rediscover and remember Love. The Shadow of Constriction is connected to two primary things – our breath and our thinking.'

'Here in the 25th Gift we arrive at one of the greatest and most powerful of all human Gifts, the Gift of Acceptance. Because this 25th Gift represents the portal to the true nature of the Universe as Love, it has incredible relevance for all human beings. Acceptance is based on taking the soft approach to life. The flowering of Love follows the burgeoning of Acceptance.'

'The only way to transform the Shadow is to have the courage to simply feel the fear. The state of Acceptance is akin to "Spiritual Springtime" where everything seems new again, flowing more easily and freely. The 25th Gift makes it difficult to hold any resentment, judgement or indeed worry about life – for now you are carrying the Seed of Love. You will walk through life with an air of another world about you, whilst at the same time being deeply grounded and open to others. When you can finally accept everything in your life just as it is right now you will have embraced the human wound.'

'The 25th Siddhi is a special Siddhi, whether it happens to be within your hologenetic profile or not. Every Gene Key exists inside each of us and the 25th Gene Key is the primary archetype of Love. The 25th Siddhi is Love itself as the Source of all and in this sense, it can be called Universal Love.'



Uranus is a transpersonal planet linking into the Higher Mind and the 7th Ray and, as an archetypal energy, it comes with a high frequency, somewhat erratic pulse, which creates sudden, spontaneous, unexpected outcomes. Uranian energy breaks up the status quo, old stagnant energetic patterns, belief systems - bringing in new concepts, and inventions through flashes of inspiration and intuitive insight.

Uranus is on Gene Key 8, known as **The Diamond of the Self** moving from the Shadow of **Mediocrity** to the Gift of **Style** to the Siddhi of **Exquisiteness**.

‘To break out of the heavyweight frequency of the 8th Shadow you have to take an exciting leap of faith in yourself. This 8th Gift catches people’s attention because it brings something fresh into the world. The Gift of Style has little to do with our popular interpretation of this word – it has more to do with following your own unique, rebellious spirit out into the world.’

‘True Style cannot be measured by materialistic trappings nor can it be faked. It is the natural flowering of your individuality. To find your own style is to be yourself without concern about what others may think. True Style takes great joy in shattering the grey world of mediocrity that is considered the norm.’



‘The individual surrenders the self to a creative process that controls the individual rather than the individual controlling the process. The 8th Gift is about manifesting individual dreams rather than simply dreaming about them. This Gift is wild, organic and unpredictable energy full of genius and quantum leaps. Such is the power of genius, for it carries within it more than just a new concept – it carries intent from a higher realm that is far beyond the individual through whom it manifests. Their only concern is to free more free thinkers – thus such people inherit a powerful mission in the world.’

‘People of the 8th Siddhi are not leaders. They are examples. Exquisiteness is experienced when the Divine Essence begins to shine through the individual. In this state of bliss you fall in love with your own pristine manifestation because it is through this uniqueness that the Divine currents can be accessed.’

‘This is the stage at which you achieve transcendence of your genetics. You remain differentiated at the level of form, but at the collective Universal level your awareness permeates all forms, making you both a drop in the ocean and the ocean itself.’

‘There is an inner Light and Wisdom that has a powerful and liberating effect on others, freeing them from the structured systems. Such people create their path as they walk it. Their legacy to the world is to dismantle all concepts of how one should live or what one needs to do in order to attain any particular state. They sparkle like exquisite rare jewels. They shine like a diamond in the heart of creation and wherever they look, they see other diamonds in various states of clarity – each one unique, each one exquisite and incomparable.’

And Sedna, that planetary body so deep out in space, coming ever closer to the Solar System, at the end of an 11,400 year cycle, is activating Gene Key 20, known as **The Sacred OM** moving through **Superficiality** to **Self-Assurance** to **Presence**. OM is the primordial, original sound of the Universe – embodying the Supreme Absolute, Spiritual Truth, and Divine energy. It is the essence of the entire Cosmic Field.



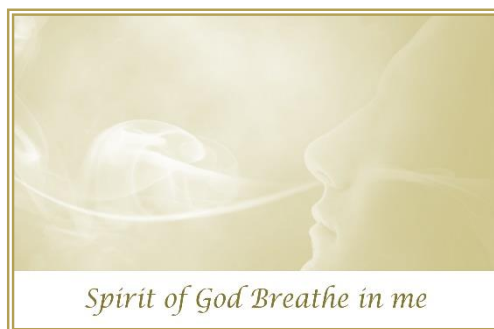
‘This aspect of the DNA is very ancient. The 20th Gene Key and its Shadow were developed in species that preceded human beings – primarily in the world of insects. Looking at insects we can see how incredibly busy they always seem to be – their only focus is to stay alive and to reproduce within a short time frame. There is a blind activity occurring and like the insects, at a shadow level, human busyness lacks real Presence.’

‘The 20th Shadow concerns how deeply consciousness incarnates into a human form. The 20th Gene Key is pivotal in understanding the Gene Keys. The original name in Chinese can be interpreted as Contemplation. It means viewing, in the sense of viewing inwardly and of being viewed. At the Shadow level of being it is about Superficiality and absence, about not being aware of things, or of oneself or others. Contemplation is not just thinking. It is a whole way of being. It is about viewing yourself from a higher level, an objective level.’

*'The Gift of Self-Assurance comes into being when a human being first learns to let go of their thinking as the authority in making decisions. **With Self-Assurance comes a profound surrender to life in every moment.** As you begin to accept that life has its own plans and flow, you also begin to stop interfering with the process at a mental level. Self-Assurance marks the end of the human tendency to worry about life. **This Gift is in fact the precursor to a higher state of spiritual awareness.'***

*'In its purest sense, the state of Self-Assurance is actually your own greater nature emerging. **It is a sign that more consciousness is being allowed to incarnate into the physical vehicle.** Your Self-Assurance is directly equivalent to your ability to escape being a victim of your mind.*

*As you begin to learn the knack, you experience the subtle expansion of a meditative awareness – an ability to witness your mind without being caught up in it. **An internal spaciousness grows and you no longer have to try to control life. The true Siddhic state is one of complete relaxation.'***



Spirit of God Breathe in me

*'As you release deeper and deeper levels of tension, the high frequencies of The Presence force you to sigh until your body comes into a state of great ease. Mythically the 20th Siddhi is represented by the notion of the Breath of God, or the Word of God. **Presence is the underlying nature of Being.** In fact, it would actually be truer to name this Siddhi, The Presence, since the use of the definite article gives us the distinct impression that this is a state of consciousness that has nothing to do with any individual. **It is the manifestation of The Presence through a human vehicle.***

*'The Presence is experienced as everywhere and inherent in everything and is where we get the term Omnipresence. When this Siddhi has flowered in a person it actually creates a subtle atmosphere around itself – a kind of silent ease that pervades the aura of the person and radiates out to all Creation. **They send off radiations of harmony that touch all quadrants of the Universe.'***



Both Uranus and Sedna are 120° away from Pluto, the planetary portal to Galactic consciousness. It is the Planet of Transformation and Divine Will bringing in the focus of 1st Ray energy. At the time of the New Moon Pluto remains, until January 2025, on Gene Key 60 known as the **Cracking of the Vessel** moving through the Shadow of **Limitation** to the Gift of **Realism** and on to the Siddhi of **Justice**.

*'As we begin to see that we are more than we allow ourselves to often believe, then that frequency, that vibration of possibility, begins to activate something inside us. **It is communicated to our DNA and we begin to open.** There is great capacity for magic in this 60th Gene Key which may sound odd as it is called the Gift of Realism.'*

*'Common sense/Realism is not in opposition to magic. It is common sense to remain open-minded to everything in the Universe because everything has at its core the same wondrous inner Light. The Siddhi of Justice is not about retribution, it is a reward. **It is given as Grace, not taken as punishment, and when it is given, freedom flows from it.'***

*'It is not an imposition or a limitation. The 60th Siddhi holds an apt description of what happens when a human being becomes fully realised. **At a certain point, our hearts open to our true Innocence and we begin to unlock other codes in our DNA that are ancestral rather than personal and we begin to transmute more global karma.'***



*'The more our Being opens the more we are given. We may recall this Gene Key is part of the Ring of Gaia and it holds the karma of Gaia. **When we are ready for that we get to be an agent of Divine Justice.** We take on the sins of our fractal, our fractal being the ancestral lineage we are born into. All this is in the DNA and all those acts that came out of fear down the ages are stored as memory imprints, in our DNA which we agree to transmute on behalf of the whole.'*

*'Every time a being attains enlightenment through the 60th Siddhi, magic comes pouring through this Being and they become a phenomenon, a symbol of the breaking of form – **Masters who have attained the Body of Light.**'*



Completing the Kite formation, the asteroid Astrea, at the base of the Kite, speaks of the return to a Golden Age. In Greek mythology, Astraea is the Goddess of Innocence, Purity and Justice and was said to live on Earth during the Golden Age, a time when humans lived in peace and harmony.

However, as the Iron Age dawned, marking an era of wickedness and misery, Astraea chose to leave Earth, dismayed by the growing injustice and corruption among humans. However, it has been said that the consciousness of Astraea will return to Earth to usher in a new Golden Age, restoring the world to a state of utopia an ending human suffering.

Astrea, at the time of this New Moon is on Gene Key 6, one of the keys of the **Ring of Alchemy**, and is known as **The Path to Peace** moving through the Shadow of **Conflict** to **Diplomacy** to **Peace**.

*'The 6th Shadow of Conflict is the single most influential Gene Key with regards to human communication. At its highest it has the potential for world peace, at its lowest, it is the root cause of all human Conflict. This is really the great emotional master key, this 6th Gene Key. **It contains the secret to Peace, the elusive grail sought by human beings since the beginning of time.** Inner Peace, outer Peace, how do we find Peace? Peace is the very purpose of evolution. Only when we have finally found Peace, can evolution really end. Then evolution ends and Being begins.'*

*'The Gift of Diplomacy begins as soon as we drop our defences and open our hearts. The ability to be with oneself, to take care of oneself internally and to be safe even in the midst of fear is a hallmark of the 6th Gift. **It is what happens when we no longer fear fear itself.**'*

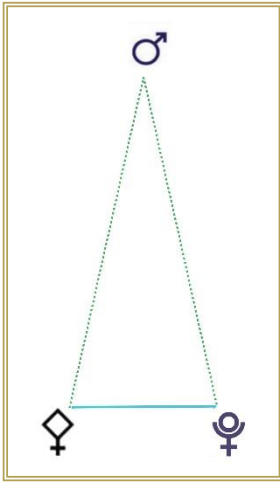
The 6th Gift is all about alchemy. Alchemy is about the transformation of the gross into the subtle. It is the path of evolution to move through progressive periods of refinement but true alchemy can only happen inside a human being first. It is part of what it means to live as an embodiment of our higher purpose.'

*'People displaying the 6th Gift are always attuned to the right timing of how to act and what to say through the strong resonance of their auric field. **These people feel physically into another person's aura - they can do this because it is a specific genetic gift and, also, because they are emotionally mature.** This 6th Gift is breaking down the barriers in human relationships and dismantling the borders and barriers that keep people apart from each other – eventually and ultimately bringing peace to Earth.'*



'Peace is an auric vibration that surrounds anyone in a Siddhic state. Awareness is no longer trapped within the vicissitudes of the emotional human drama. Profound changes occur in your physical body before, during and after this realisation. Since your outer walls have dissolved, the process is mirrored within your body chemistry and all inner conflict comes to an end.'

'It is as though all the cells within your body make peace with each other and experience their own inner Garden of Eden. In this sense, the true Garden of Eden is the body itself. The waves of Peace that accompany this event travel deep into the collective consciousness of all humanity.'



This transformational time of moving beyond the collective fears of humanity to be the embodiment of Peace is further strengthened by the Yod that is occurring. Mars, ♂ the planet of personal will, on Gene Key 15 moves through **Dullness** to **Magnetism** to **Florescence**, and Pallas Athena, on Gene Key 14, moves through **Compromise** to **Competence** to **Bounteousness** and both combine with Pluto to form the Yod.

The 15th Shadow manifests whenever a person's spirit feels low. Your attitude also affects life's events - this is the first Law of Magic - experiences mirror attitude. Your attitude denotes how consciousness is using your awareness at any given moment. Without Magnetism, or polarity, Life is experienced as Dullness. If you can allow the Dullness to permeate your entire being without being stuck in any reaction, it will cease to be dull. You will experience it as growth and, at even higher levels, as the flowering of consciousness known as Florescence.'

'The 15th Gene Key is such a powerful portal into life's mysteries. It is one of the Gene Keys that bridges humans with other life forms and in doing so it connects us profoundly to the living spirit of nature or Gaia. The 15th Gift represents the inner barometer within your DNA to the Schumann Resonance – the Earth's heartbeat.'

'Just as Magnetism holds families of the same species together people with the 15th Gift feel a deep kinship with humanity. The Gift of Magnetism makes a person physically glow with life force - it is a Gift filled with enthusiasm and openness and Love. Trusting the natural ebb and flow of life's currents, the people embodying the Gift live closely with the Earth's natural rhythm and experience the wisdom and clarity of slowing down.'

'There is a subtle shift in attitude that unlocks the hidden magnetic force in your DNA. Harnessing the power of the natural world and magnetizing resource you begin to unlock the power in your aura to transmit and receive information between different life forms. Eventually as the frequency of your aura comes into perfect resonance it interlocks with the Earth Grid and your consciousness expands exponentially, becoming one with Gaia herself.'

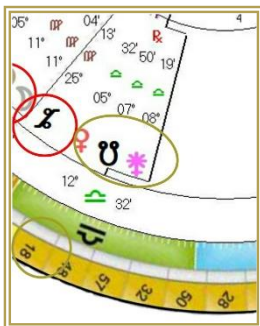


'Florescence is the ultimate flowering of your higher self. Florescence cannot be chased, hurried or enforced. It is a state that occurs to humans sporadically, no one can predict if or when it will occur to a particular person. However, when it does arise that person is surrounded by light, magic and a tangibly magnetic aura.'

'As the zenith of human magnetism, Florescence manifests like a supernova through the human aura and once begun it keeps expanding and expanding into deeper and deeper dimensions. Florescence depends upon nothing. It cannot be created - not by meditation, good karma or by any form of effort, not even by effortlessness. It is Grace.' *'Florescence is the explosive chain reaction of enlightenment - it follows Nature's own wild organic rhythm. When you come into perfect alignment with Gaia, then, in the words of Christ, you mystically "Inherit the Earth".'*

And, the asteroid Pallas Athena ♁ at the Gift level, brings a clarity of focus and commitment to all actions.

'Competence creates a powerful magnetic field that not only draws in the right support but also has the ability to magnetise material wealth. Those who have the 14th Gift strongly activated in their hologenetic profile are often the driving force that can implement a particular vision or idea. Competence is about something transcendent, something huge. The 14th Gene Key is one of the Gene Keys that will change the world. The 14th Siddhi carries within it the power of materialisation. This is what Alchemy is. We can only do this at the very peak of consciousness. We must have turned ourselves into gold first. No vestige of Shadow left inside and then we can work miracles.'



Magnifying the overall feminine, magnetic quality of this New Moon you will see that Venus, the South Node and Juno are all together in Libra.

In plain English this is requiring that we bring the emotional, feeling, body (Venus) into a state of balance and equilibrium, (Juno) no longer caught up in deeply entrenched, ancestral entanglements from the past (South Node) that may still be manifesting unconsciously in the present. This stellium of Venus, South Node and Juno ✱ opens up into a T Square with Ceres and the North Node, which emphasises the Maternal and the Feminine qualities of tenderness and gentleness.

Here, superimposed upon the chart is this T Square in gold, which, as it connects to the North and South Nodes, speaks of the Collective state of consciousness and how we can each navigate this time with awareness and openness.

The South Node, which holds the culmination of past collective Karma that is seeking to be transmuted and integrated into the highest frequencies for present awareness, remains on Gene Key 18, joined this month by Venus and Juno - known as **The Healing Power of the Mind** moving through the Shadow of **Judgment** to the Gift of **Integrity** to the Siddhi of **Perfection**.

'The 18th Gene Key is psychologically extremely profound. It is actually the basis of psychology as it holds the keys to human conditioning.'

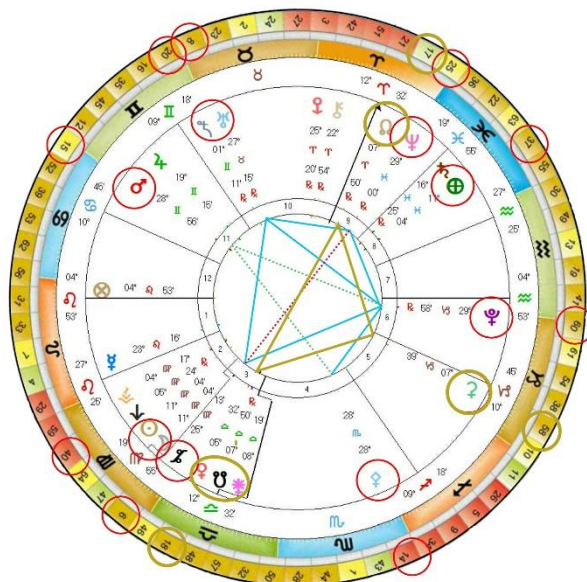
'This Gene Key is about the physical, emotional and mental boundaries that you meet in your life. Because we are biologically imprinted in seven-year cycles, it is possible to say that we have not fully incarnated into our lives until the age of 21. The 18th Gene Key will continually bring you back to any recurring issues rooted in your childhood.'

*'The 17th and 18th Gene Keys are partners and as such the Shadows of Opinion and Judgment create much misery in the world. **The 18th Shadow, however, holds a key secret, that all judgment is a self-Judgement.** The key to raising this level of frequency is to realise that everything external in your life is a mirror of an internal process seeking resolution. As you move beyond the victim mind – your frequency rises, and your external and internal life reflect these changes.'*

*'When you are free from the trap of the victim mind then Judgement becomes Integrity. To uphold Integrity, you have to be courageous – you have to challenge anything or anyone who does not meet your high standards. Integrity uses Judgement in an objective and impersonal way. **Judging from the heart is never cruel because Integrity has only one purpose - to serve the whole in the spirit of truth and compassion assisting other to step out of the victim mind.'***

*'The 18th Siddhi is not often seen in the world today - it involves an archetype of Perfection. If the 18th Gene Key is activated within your hologenetic profile then you will continue to lead humanity towards Perfection in any and every way you can conceive of. **Someone demonstrating the 18th Siddhi is above the victim mind – when they look at someone, even someone who appears genuinely evil, they will only see the Higher Self hidden in that person.***

*'By holding this high thought frequency they influence hidden currents of energy that raise the frequency of others. **This is called Siddhic thinking and it involves thinking with the heart.** The 18th Siddhi serves a very mystical purpose – it heals the split in the mental plane itself bringing humanity closer and closer to its realisation of Oneness. **The 18th Siddhi is the source of the tradition of the Bodhisattva Vow.'***



*‘The Bodhisattva Gene Keys keep returning to the planet as individual human beings whose sole purpose is to build this collective vision of Perfection on the material plane. **As we will all one day see, the end of this story also happens to be the beginning of our Universal Life.**’*



The North Node is guiding us in our evolution through Gene Key 17, known as **The Eye**, moving through the Shadow of **Opinion** to the Gift of **Far-Sightedness** to the Siddhi of **Omniscience**.

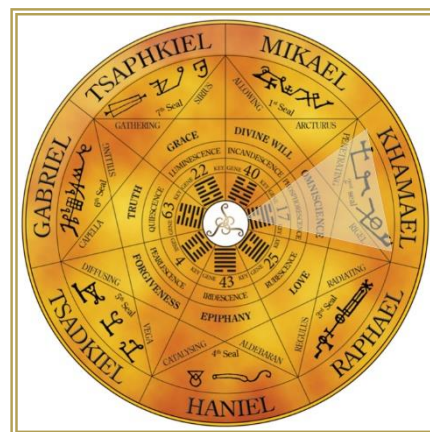
*‘The true purpose of the 17th Gift is to uphold Integrity, by challenging all misrepresentations of truth in the world. The very quality that leads to narrowmindedness at the Shadow frequency has a mission to create open-mindedness at the Gift frequency. **At the Gift level the individual sees the futility of identifying with a specific opinion.** Because the 17th Gift doesn’t dictate direction in a person’s life it is freed to do what it was always intended to do – to differentiate between those patterns that lower your frequency and those that raise it.’*

*‘Once freed from the Shadow frequencies of mass consciousness the 17th Gift has the ability to see higher dimensions and realities - looking ahead to the future and linking one phase of evolution to another. **It is working with the Gift frequency that the process known as the opening of the third eye begins.** This Gift brings access to a whole new inner language that circumvents the need for one sided, dualistic expression. Thus, Far-Sightedness can be said to arise directly out of the heart rather than from the mind. This 17th Gift is in fact the true instrument of human perception.’*

‘Through the 17th Siddhi of Omniscience the human mind will finally see the perfection and beauty of our oneness with all of existence and through the 18th Siddhi of Perfection we will actually bring that vision into full manifestation. Where seeing and the seen are one.’

‘A single eye through which consciousness pours and where past present and future are a single eternal screen of consciousness. These are the true seers and oracles.’

*‘At the level of the 17th Siddhi consciousness sees through you rather than you seeing through it. When the 17th Siddhi comes into the world it comes like a Divine afterthought. **It is one of the seven powers of Grace.** It is where the body becomes an instrument for consciousness and there are no borders, levels, opinions or past lives, for the Siddhic level sees an endless fractal pattern of life – repeating over and over – the same but always new – the serpent eating its own tail. **This is a Siddhi that sees and knows only Perfection.**’*



Holding both the North and South Nodal axis is dwarf planet Ceres, the largest and first of the discovered asteroids found between the orbits of the planets Mars and Jupiter. Ceres is named after the Roman Goddess, Ceres (*Cereals/agriculture*). The Greek Goddess counterpart was Demeter (*Of Mother*). Ceres rules nourishment, transitions in a female’s life, nurturing, motherhood, family relationships, as well as food and agriculture. Ceres brings a love of what is simple, natural, wholesome, and beneficial for you. With Ceres, there is a strong need to nurture and protect, as well as to treat other living beings, including animals, with respect and reverence.

Ceres on Gene Key 58 moves from the Shadow of **Dissatisfaction**, to the Gift of **Vitality** to the Siddh of **Bliss**.

*‘The moment you accept your plight as a human being eternally driven to seek fulfilment in the future, everything in your life changes. **The energy that has been seeking an outlet into the world through your Dissatisfaction is turned back upon itself, which forces it into the atomic structure of the body.** The result is a kind of implosion of inner vital force, which catalyses micro processes within your physiology – in short you begin to become yourself once again.’*

'At the Gift frequency Dissatisfaction now begins to turn into joy. This joyousness lies within every human being and is nothing short of Life expressing itself without resistance – it is the evolutionary urge to become self-aware. Your mind becomes quieter – your relationship to the future changes – this can be a time of intense physical transformation. The 58th Gift is an unstoppable force that once set in motion cannot be turned back.'

'Not only does your life take on a new shape, but a far deeper process overtakes you – the process of moving into the heart. The future of human evolution truly lies in the ideal of service. The Joyousness we seek as individuals is intimately tied to the joyousness of the collective – this is why the 58th Gift's delight is to work so tirelessly in that direction.'

'But how can we move in Bliss and still be able to communicate with others and be useful, be a human. It's all about weaving the state into your life. The moment there is a pause and our awareness turns inwards, the bliss is there but then life, our responsibilities, others anything, can draw us back again into the outer senses. Then the Bliss moves to the background as the awareness comes back out.'



'Seen in this way the Siddhis are much easier to integrate in the world. They never leave us. They are always the background state, but our awareness moves and breathes with the flow of life and so the state becomes a stage. There is only Bliss, but there are stages of being anchored in it, and we have to practise it and get used to its frequency. Our bodies have to acclimatise to its voltage and as they do so, over time the Bliss becomes stabilised.'

*'This is why the 58th Siddhi is paired with the 52nd Gene Key, **The Still Point**, because the Bliss has to become anchored in the world. **Heaven must come to Earth.** The mountain must come to Mohammed. Bliss, true Bliss, is utter stillness. It is unmoving, unflinching. **It is eternal, as we are.'***

May Bliss and Stillness be within and around you ushering in the Will to Surrender in Timeless Peace.

Love and Blessings to All

2.9.2024

Extracts from 64 Ways and Gene Keys by Richard Rudd