

# Cosmic Overview

## Piscean New Moon 2025



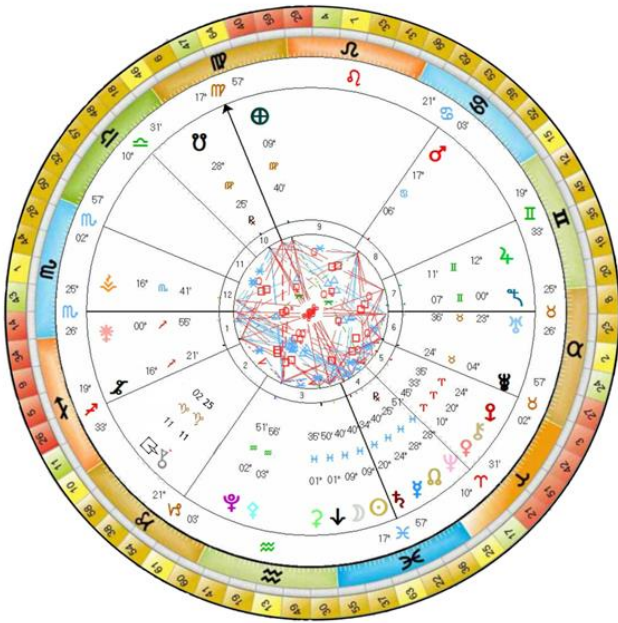
*The intricacies of Life are common to all  
It is how we untangle these twists that paints  
Our individuality in the canvas of Life.*

The Labyrinth

*Our greatest strength lies in the gentleness and  
tenderness of our Heart*

Rumi

# ‘I AM’ the Light of the World’



This month's New Moon takes place at 9° Pisces 40 on the 27<sup>th</sup> or 28<sup>th</sup> of February, depending upon where you live in the world.

Pisces and Neptune link to the Water Element, to the higher expressions of the emotional body, to be found within the ethereal quantum realm, and this month Saturn, Mercury, the North Node and Neptune are all in this sign. So at this New Moon we will all be awash with these subtle, gentle, expansive energies that are dissolving the 'walls' that keep us separated from pure Universal Consciousness and the Light that flows through us moment by moment.

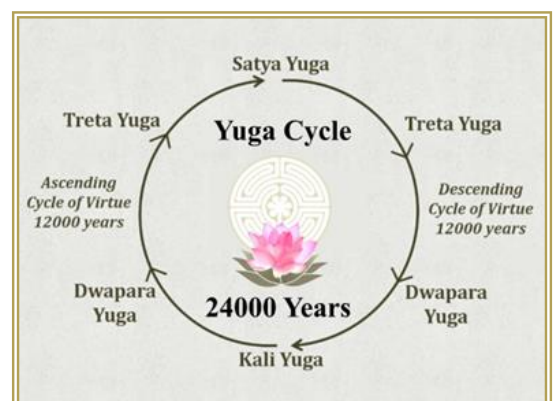
As we become more and more aware of how we impress on the water element and the collective consciousness with our thoughts and feelings we can become ever more mindful and creative in the choices we make.

The Constellation of Pisces flows with the 2nd and 6th Rays – the Rays of Love, Wisdom and Devotion. These high-frequency qualities create the environment in which all Life can flourish. However, at lower resonances, we find that Love distorts into tribal allegiance, Wisdom, into divisive thoughts and beliefs, and the Light of Devotion becomes fear-based intransigence.

At the personality level, the 2nd and 6th Rays are again emphasised, through the Planetary Rulers of Pisces, which are, Jupiter, on the 2nd Ray, and Neptune, on the 6th Ray. This overlaying of the 2nd and 6th Rays, creates the potential for individuals, to constantly, at lower frequencies, to emotionally, play out, lifetime after lifetime the distortion of these higher principles. On the 2nd Ray, Jupiter, brings spiritual glamour and illusion, and on the 6th Ray, which both Mars and Neptune rule, lies the basis for all ideological and religious wars.

To break this consistent recycling of belief, and imprinting, requires a shift into a higher awareness, when Pluto, the Planet of Transformation, and the 1st Ray, become the Planetary Ruler and focus of Pisces. As the Aquarian Age takes hold, the Sixth Ray, influence on Mars and Neptune, will begin to fade, and all religions will go through a metamorphosis, for Uranus and the 7th Ray will dominate. This is the period we are now entering into, and ultimately, Love, Wisdom and Peace will replace the repeating scars and pain of war and fear.

The collective consciousness of humanity will finally decide when this will occur, but with sufficient Souls on this Plane who hold the vision, the focus and the knowing that this must ultimately occur, we can move onto a timeline that will manifest this foundation within the collective in this period of time, and for future generations to come. For we are at a convergence of rhythmic timelines, from the Cycle of the Sun around the Galaxy, the Precession of the Equinoxes, the Yuga Cycle, plus Sedna's 11,500 orbit, all approaching an imminent completion before restarting a new Cycle. So these are profound times, when all is coming up to be released and realigned.

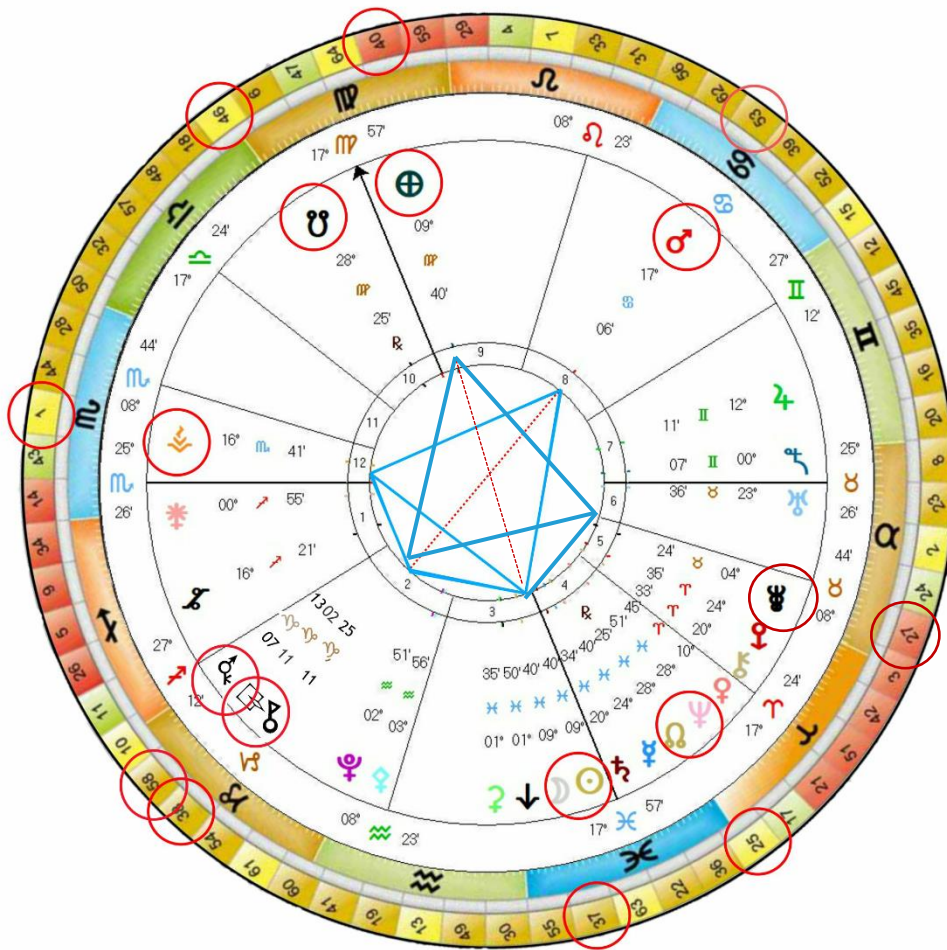


We are the *Time Keepers* and the *Grounding Rods* for this realignment. In holding all Life within the pure Love and Light of Universal Consciousness, emanating in the Cosmos, it enables us to become a conscious 'cog' on the Cosmic Wheel, to facilitate a radical, yet gentle Shift of the Ages, as we enter into this next Cosmic Cycle.

Follow your Bliss and the Universe will open doors where once there were walls.

Joseph Campbell

# Chart for the Piscean New Moon 2025



**New Moon 28<sup>th</sup> February 2025 00:44 UT London UK**

**<https://www.timeanddate.com/moon/phases/>**

At the time of this New Moon two Kites are holding an energetic pattern in the sky – the Sun ☉ and the Moon ☾ feed into both of the Kites. In the first Kite the Sun and Moon, at the apex of the Kite are opposite to the Earth ⊕ and Ixion, Quaoar and Pholus are trine, 120°, from asteroid Hygeia ♁

The second Kite has the Centaur and Trans Neptunian bodies (TNOs) of Pholus Quaoar and Ixion at the apex, with Mars ♂ opposite, flowing to Vesta ♃ and back to the Sun and Moon.

As already shared this New Moon is awash with Piscean energy which creates a very subtle and elusive energetic, added to which Neptune ♆ and the North Node ♁ are also in conjunction in Pisces which will not occur again until January 2337. In many ways, this is a focus on and a finale of how we have collectively used the energies of Pisces, during the two thousand-year Piscean Age, as Neptune will be moving into Aries at the end of March, which will mark a significant difference and shift in the energetics. So, let's dive into this New Moon chart and see what emerges.

The Sun and Moon are on Gene Key 37 known as Family Alchemy moving through the Shadow of **Weakness** to the Gift of **Equality** to the Siddhi of **Tenderness**.

*'The natural tendency of evolution has been to favour the physically stronger – at low frequencies our genes know no other reality than the survival of the fittest. However, now we have reached a stage in evolution in which physical strength no longer governs our future direction. **The 37th Shadow is undergoing a major mutation and through the inner rebalancing within the human psyche the fabric of our society is being forced to change.***



*‘This uprising of the Yin force is beyond gender – many women today are under the impression that the time for women is coming and the time for men is over – this attitude is simply another form of the 37th Shadow which always over-emphasises one aspect of the polarity.’*



*The 37<sup>th</sup> Shadow is undergoing a major mutation throughout humanity that will only build in speed and frequency as we move beyond its old boundaries and definitions. **It is in the human heart and its ability to grasp the holistic essence of life that our true collective future lies.** In an individual human being, this change translates as the mind serving the heart.’*

*‘It is in the 37th Gift of Equality that a great hope is presently arising for humanity. Equality is such an easily misunderstood term. **Equality is a living ideal that lifts people out of the game of victims and winners or strength and weakness.***

*‘When you operate out of this Gift you are living directly out of your heart and all else is secondary. The human heart carries this equalising force wherever it moves and eliminates divisions in others by treating everyone with respect. **The mind fears that Equality will create a world in which everyone is the same, however true Equality is based upon respect for individual uniqueness – indeed it thrives on it.** It is through the love of your own self that you will find your love of others.’*

*‘The 37th Gene Key represents an evolutionary phase that is now coming to an end, which means that something new must also be born from it. **The story of Christ must give birth to another dimension and this dimension concerns the role of the feminine archetype.** The 37th Siddhi is the Siddhi of Tenderness and Tenderness is a quality most often associated with the exchange of Love between a parent and child.’*



*‘Tenderness in particular is an archetypal motherly essence. Jesus himself is universally connected with the figure of the lamb whose essence is represented by this 37th Siddhi. **We, humanity, are the lamb and the Universal Spirit holds us in Tenderness, as a Mother cradles her child.***

*‘As we move beyond the tribal and blood definitions that have dictated our traditional lifestyle for so long, we will see how limiting our current definition of family really is. **The 37th Siddhi is an upsurge of consciousness that will slowly unite human beings as the 55th Gene Key frees us from our victim consciousness.***

*‘Tenderness is a force to be reckoned with and as its programming partner the 40th Siddhi of Divine Will testifies, it is a force that has us a set in its sights. **In its very softness, it is insurmountable, invincible, and inevitable.***

The Earth at the time of the New Moon is in Virgo, on this key, Gene Key 40, known as **The Will to Surrender** moving through the Shadow of **Exhaustion** to the Gift of **Resolve** to the Siddhi of **Divine Will**.

*‘**The 40th Gene Key and its Shadow concern the correct or incorrect use of the power of the human will.** Whenever your actions are in alignment with the Universe the requisite energy is supplied from deep within your being – but when they are not flowing from your true source they are forced and your energy is depleted. **The incorrect use of your will puts an enormous strain on your kidneys and adrenals as the body struggles to supply the energy to push against Universal flow.** The result in the long run is premature ageing, disease and Exhaustion.’*

*‘**When you activate the 40th Gene Key at a higher frequency, Exhaustion becomes a thing of the past.** When your life force is aligned you will discover that there is a vast amount of energy available to you. The 40th Gift of Resolve is about becoming adept at giving to yourself. **Ultimately it is about deep physical relaxation.** It is a wonderful balance between serving the world and serving your own enjoyment.’*



***‘True Resolve is not possible unless you know how to relax. Rest allows the physical body to restore – relaxation allows all the subtle bodies to recharge as well. With Relaxation our Mental and Emotional health are assured. The 40<sup>th</sup> Siddhi holds the key to complete physical relaxation in which every molecule of DNA inside your body is functioning at its optimal frequency. This requires a huge process of karmic release, which is the job of the Codon Ring known as the Ring of Alchemy.’***



***‘Gene Key 40 links to the First Seal, of the Seven Sacred Seals, which when opened by the Siddhi of Divine Will, heals human repression. Repression is the primary wound of humanity; since it refers to the very storage of karma in the DNA of the physical body. Only through the Grace of the 40<sup>th</sup> Siddhi can this karma be transmuted.***

***‘The four Gene Keys 6, 40, 47, and 64, in the Ring of Alchemy transmute your DNA so that there is no longer any interference in your physical body. This means that your subtle bodies can manifest directly through your physical being. This is the real meaning of complete physical relaxation; it is a state beyond the comprehension of your mind. It is the direct manifestation of Divine Will.’***

Looking now at Mars, which links to personal will, to assertiveness, action, logic, and forward momentum, or the masculine, yang principle - you will find that since the end of December last year, Mars has been moving retrograde which has given the opportunity for reflection and integration, but since February 14<sup>th</sup> Mars has been basically stationary and, on February 24<sup>th</sup> just before this New Moon, Mars turned direct and so expect to see a continuation of more outer action in the world which has the potential to move and cut through any lower shadow energies of confusion and illusion which may have been gathering over the last twelve years whilst Neptune has been in Pisces.

Mars is on Gene Key 53 known as ***Evolving Beyond Evolution*** having the Shadow of ***Immaturity***, the Gift of ***Expansion*** and the Siddhi of ***SuperAbundance***

***‘The Shadow of Immaturity is rooted in the human tendency to see ourselves as separate from each other and Nature. The human mind has enormous difficulty seeing itself as a collective organism that is deeply embedded in Nature and the Earth. It is through the two Shadows of Greed and Immaturity that humanity must finally awaken to its nature as a ‘single organism. As you come to understand this vast and sweeping insight, your heart begins once again to open and trust in Life just as it is – with no opinion, no judgement, no attachment and above all, no fear.’***

***‘In contemplating the 53rd Shadow perhaps you can sense how spiritual this Gene Key actually is. It really does represent the driving force of evolution as consciousness burrows deeper and deeper into the material life. From the point of view of the 53rd Gift all that exists in life is the perpetual impulse to expand. The Gift of Expansion demands that individuals transcend their personal opinions, views and attempts to understand what is going on. It takes enormous trust to allow your life to truly expand because it appears to the mind to become more complex, whereas in fact it is moving into greater synthesis.’***

***‘In a human being, the expansion of frequency can only occur in one way – through the heart. The 53rd Gift has the quality of bhakti or devotional energy. As you allow awareness to expand it opens your heart. You see the evolutionary impulse in all of life – all interconnected – all one. The 53rd Gift gives way to the bhakti – the ever-expanding-transcending-and-including energy of Life itself. Once you make this shift into your heart you are continually replenished and expanded.’***

***‘We are indeed entering a new evolutionary phase right now in which human awareness seems ready to make a great quantum leap in terms of its expansion, but even though awareness may expand, Consciousness does not expand since it is already***



everywhere and everything and even everywhen. This is the crucial truth to understand. **Beneath the form, Consciousness never changes or evolves or expands or contracts. It simply is.** Superabundance is a space beyond frequency, but we can only describe it as a very high frequency at which there is nothing left to do in the world.'

**'The 53rd Siddhi represents the state beyond and behind awareness known as Pure Consciousness.** This Gene Key links to the Ring of Seeking, however at a certain point you have to let go of your seeking as the awareness inside expands outside the form. **At this stage known as Enlightenment the great and final leap occurs – it is the leap into Pure Consciousness and the end of evolution itself.'**

Again, the masculine, or electronic, impulse of energy is highlighted with Vesta on Gene Key 1, which the I Ching describes as 'Creativity' 'Force' or 'Primal Power.' Gene Key 1 moves through a state of **Entropy to Freshness to Beauty.**

**'The Chinese I Ching is one of the greatest spiritual books of all time. Written thousands of years ago it encapsulates a binary code that charts all the seasons and cycles of life.'**

**'In the book these life processes were measured by a simple code of six lines, either male or female. The very first hexagram is represented by six male lines all in a column. This archetype was seen as the primary code for all creative life in the Universe.'**

**'The I Ching is a mathematical mirror of the genetic code and one can actually reduce all 64 archetypes down to four essential principles. These are captured at the beginning and the end of the I Ching sequence itself – the 1st and 2nd Gene Keys and the 63rd and 64th Gene Keys. These two pairs are like the prologue and epilogue to the great book itself. Upon these four principles, or pillars, life is built.'**

**'The state of Entropy is rather like a vacuum state. Your system is recharging so the energy within you withdraws into a kind of stasis. The resulting feelings, or lack of feeling and/or enthusiasm provide a delicate environment for something quite special to occur, if you are patient enough to allow it.'**

**'Every time an individual moves cleanly through their low frequency chemical process, they re-enact the creation myth – out of darkness suddenly light emerges and as if by magic the low energy field switches and is experienced as joy. This joy comes as unexpectedly as the sadness does. This 1st Gift is called the Gift of Freshness because whatever emerges out of its numbing chemistry field is absolutely new.'**

**'Freshness conveys aliveness, as though it refers to something burning with an inner fire. This is exactly how people empowered by the 1st Gift express themselves creatively, as though surrounded by a halo of something brought with them from another world.'**

**'As you raise your frequency through this Gift you become a person likely to be singled out by others as a natural born leader. This Gift brings the potential to be a clear vessel for the creative process so that evolution can flow through you and find its way to a permanent state of Love Beauty and Unity.'**

**'In Human Beings the 1st Siddhi is Beauty and as with all Siddhis, it is also reliant upon its programming partner the 2nd Siddhi of Unity. Beauty lies in the Unity of all. True Beauty is emptiness. True Beauty when manifested and realised in a human being, presupposes a state of Union with the totality.'**

**'In truth, Beauty is our nature. It is right here, right now, inside each and every one of us. In Beauty nothing lies outside the Unity of everything. Everything is experienced as a unique creative expression of this Unity. Everything shines with the essence of its uniqueness and yet at the same time it all shares a single Source.'**



**'To be awakened in this way is to become a great inspiration to humanity. At the Siddhic level we find ourselves in an eternal field of Syntropy. Syntropy refers to the movement of energy within infinite dimensions, all imbued with consciousness and all United by Order and Love.'**

**'When this inner Divine Fire is released through your DNA you become capable of miraculous power.'**



These two Kites are completed by Cosmic bodies that are not planets, taking us into the subtlest of energies but also throwing Light onto how this forceful energy may play out at this time.

You will see that Ixion♂ Quaoar♄ and Pholus♂ are closely together in Capricorn and making a sextile  $60^\circ$  angle to the Sun and Moon, and a trine  $120^\circ$  to the Earth and Hygeia♀ is trine  $120^\circ$  to the Earth and sextile  $60^\circ$  to the Sun and Moon. So what message are these 'outer' bodies revealing to us.



Looking at the closest Cosmic Body to the Earth first, Hygieia is the fourth largest asteroid in the Asteroid Belt, and according to Greek myth, was a daughter of Asclepius, the God of Medicine. As one of five sisters representing aspects of health and healing, Hygieia's domain was preventative medicine: how to care for our physical and mental bodies to avoid illness, as opposed to curing illness once contracted. Based on this holistic understanding and Syntropy, our powerful immune systems work at optimum levels - expressed as the ancient Hippocratic Oath of '**Do No Harm**'.

Hygieia is on Gene Key 27 moving through the Shadow of **Selfishness** to the Gift of **Altruism** to the Siddhi of **Selflessness**.

**'To give to others from the heart activates healthy currents deep within your body. Purpose flows from Altruism like water from a spring – connecting you into your Higher Purpose – it bubbles up inside you, creating warmth and goodwill, which spreads to others.'**

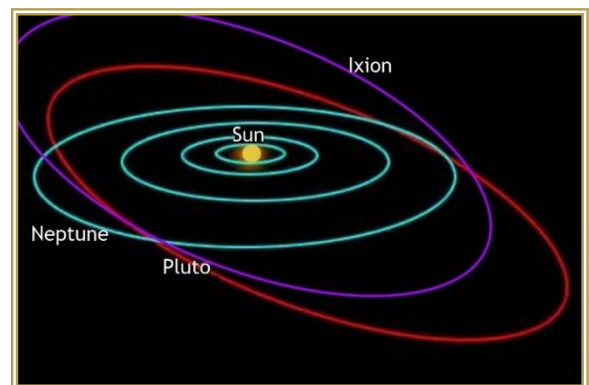
**'This Gift links to children and to the care of children – it is also quite natural for those with the 27th Gift to find themselves involved in the service professions, where they can nurture others. The true nature of the 27th Gift is generosity, which is primarily about caring for others and nature generally. At a high frequency level the 27th Gift gives off a powerful aura of trust which is immediately felt by others. At a deep genetic level, the presence of this 27th Gift engages a feeling of communal security through its strong resonance to the group mind. As such it is one of the most powerful healing Gifts in the whole genetic matrix.'**

**'Known as the Doctrine of Harmlessness, the 27th Siddhi of Selflessness has manifested in the lives of many saints throughout history. This is not about being a do-gooder. Selflessness is an absolute pure yearning to provide succour to others. There is no sense of self-consciousness in it. Such people have made a quantum leap and the Siddhic energy available to them is enormous. Despite endlessly giving of themselves to others, they are not depleted, but are continuously nourished by the refined currents of the aura of love surrounding them.'**

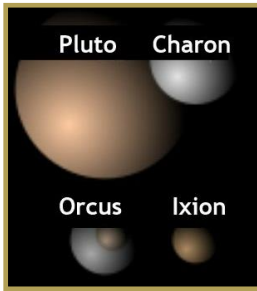
**'Inherent in the 27th Siddhi is the realisation of the Divine law of Philanthropy – the Love of Humanity. At the Siddhic level this Gene Key becomes capable of miraculous healing. As long as there is an ounce of life force within something, the vast love coming through the 27th Siddhi can revive it. Because this Siddhi draws upon the entire bio-energetic field of Gaia it has the capacity to heal any disease or sickness.'**

Ixion is a dwarf planet located in the Kuiper Belt, just beyond Neptune whose orbit is similar to Pluto. They both spend part of each orbit in the underworld and part above, however, they are oriented differently, meaning Pluto spends more time in the underworld than Ixion.

Ixion has a Plutonian energy, one which cuts through existing systems even more than Pluto, but which works more out in the open and less in the underworld. And, like Pluto, the resonance to Neptune lends a spiritual nature to Ixion's energy.



According to Ancient Greek legend, Ixion has a quality of lawlessness about him, having murdered his Father in Law he was consumed by guilt, but was given a second chance of redemption by Zeus, who took him to Mount Olympus to be with the other gods, but he attempted to seduce Zeus wife – so Zeus created a cloud in the shape of his wife, from which it is said the Centaurs were born, and Ixion was banished from Olympus, bound to a burning wheel and sent spinning across the heavens for eternity.



So, a pretty heavy, primordial story, but these ancient stories, and imprints held in primal space are being revisited and recalled so that this time they may be interpreted differently. At an unconscious Shadow level, the myth suggests the action of this dwarf planet involves broken promises and retribution and there is the danger that second chances will be wasted through the arousal of base passions. At the Gift level, Ixion represents a passionate Spiritual mission, which may involve a violation of existing customs and a resulting catharsis, followed by opportunities for a second chance - no longer being ruled or at the mercy of lower emotions.

And, at a Spiritually evolved level, Ixion offers the opportunity to follow your Bliss, living your life from an innate inner guidance, whilst respecting implicit Natural and Cosmic Laws. This archetypal potential essence is being expressed back to us as Ixion is on Gene Key 58 known as **From Stress to Bliss** moving through the Shadow of **Dissatisfaction** to the Gift of **Vitality** to the Siddhi of **Bliss**

*'The moment you accept your plight as a human being eternally driven to seek fulfillment in the future, everything in your life changes. **At the Gift frequency Dissatisfaction now begins to turn into joy.** This joyousness lies within every human being and is nothing short of Life expressing itself without resistance – it is the evolutionary urge to become self-aware. Your mind becomes quieter – your relationship to the future changes – this can be a time of intense physical transformation.*

***'The 58th Gift is an unstoppable force that once set in motion cannot be turned back.***

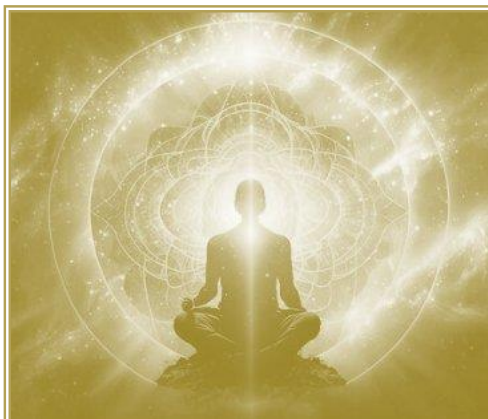
*'When the frequency of this Gene Key hits the Gift level things tend to happen very quickly in your life. Not only does your life take on a new shape, but a far deeper process overtakes you – the process of moving into the heart.'*

*'The future of human evolution truly lies in the ideal of service. The Joyousness we seek as individuals is intimately tied to the joyousness of the collective – this is why the 58th Gift's delight is to work so tirelessly in that direction.'*



***'As your identification with the future progressively loosens, you are brought more and more deeply into the present moment.*** Your core Dissatisfaction is being transformed into Vitality. As the frequency of your Vitality attains a higher and higher pitch, at a certain point it peaks and catalyses a spontaneous shift in awareness. This vital force burrows so deeply into your being that it triggers a process within your DNA known as enlightenment.'

***'When Consciousness comes, it comes into you like a flood wiping you clean in less than a microsecond. It is one of the greatest mysteries of existence.*** Once a being has realised enlightenment through the 58th Siddhi they become entirely unfocussed. Their awareness stretches into infinity, their gaze becomes unfixed and dreamy and their heart is so full that it bursts with Love for all creation – **everything reverts to its pure and pristine state of being.** No matter what one thinks does or says the experience of enlightenment cannot be attained through seeking – whether Bliss or Honour or Illumination, each Siddhi state is outside of our grasp.'



*'Our bodies have to acclimatise to the voltage of Bliss and as they do so, over time the Bliss becomes stabilised. This is why the 58<sup>th</sup> Siddhi is paired with the 52<sup>nd</sup> – in the I Ching known as **Keeping Still Mountain**, because the Bliss has to become anchored in the world. **Heaven must come to Earth.** The Mountain must come to Mohammed. Bliss, true bliss, is utter Stillness. It is unmoving, unflinching. It is Eternal, as we are.*

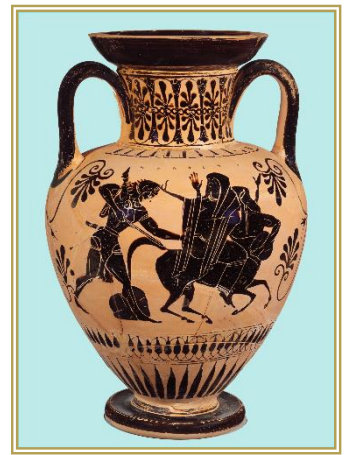
***'The Siddhi of Bliss cannot be hidden or contained in any way, but radiates out from the very pores of one's Being.*** Finally, you realise that the Siddhi is present within the Shadow just as the flower is present at all times in the seed.'



Both Pholus and Quaoar are at 11<sup>o</sup> Capricorn on Gene Key 38, known as **The Warrior of Light**.

*'Pholus, in ancient Greek myth, lived in a cave in Arcadia, where he was the protector and keeper of the sacred jar of wine of Dionysus, the god of Ecstasy, whose rites were often characterised by drunkenness and chaos, and which sometimes culminated in violence.'*

*'The 'Jar of Pholus' was not supposed to be opened for four generations, which seems to highlight ancestral processes, whether known or unknown to us, which are releasing. In his desire to taste the wine, Hercules had Pholus open the Jar and the Centaurs became intoxicated and a fight ensued. Hercules ended up killing many Centaurs including Chiron and Pholus who were also accidentally wounded by his poisoned arrows.'*

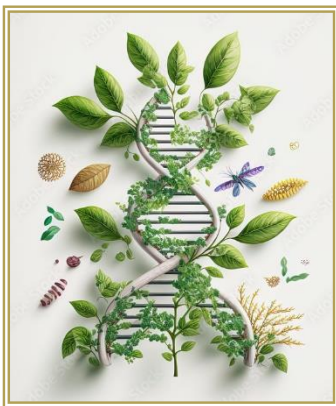


*'Archetypally, Pholus is linked to generational trauma this is why bearing witness is important: we are called to clarify our own ancestral lineage by our healing attitude to it. With Pholus, however, actions may precipitate quickly and then the consequences take a while to resolve. Sometimes there are specific things to do, like forgiveness work, but often it is simply to inwardly acknowledge and transform the suffering of those who went before us.'*

Melanie Reinhart

And Quaoar talks about the natural order of Life and its Creation Laws and asks us to respect the natural Order and Laws - to take responsibility and to live in harmony with these Laws.

Quaoar's name comes from the Tongva people who have been living in the Californian area of the USA for thousands of years – the original Los Angeles. According to Tongva myth, Quaoar came to Earth and found chaos, and felt pity. He started to dance, whirl and twirl while he sang the "creation song". He sang two other "gods" into creation and they together created the Sun and the Moon and then all five together created everything else existing.



The archetype of Quaoar seems to have both liberating and governing aspects, that asks us, to use our own abilities to create order under the Natural/Universal Laws, which includes honouring and respecting all Life.

These three Cosmic energies Ixion, Pholus and Quaoar describe very clearly the period of time that we are passing through as structures are being broken down, and the past comes up to meet us. We are being guided to incorporate Natural Law which our ancestors knew and respected, based on the interconnection of all Life and our co-creative ability within the Cosmic Field.

And to facilitate this integration the 38<sup>th</sup> Gene Key moves through the Shadow of **Struggle** to the Gift of **Perseverance** to the Siddhi of **Honour**

*'This aspect of DNA developed in human beings became the foundation of the evolutionary law of the survival of the fittest. This Gene Key still influences all human beings today, regardless of how closely associated you are to this Shadow. It is there in the collective energy field of humanity and it is particularly strong when certain groups of human beings are threatened by other groups, manifesting through its aggressive reactive side.'*

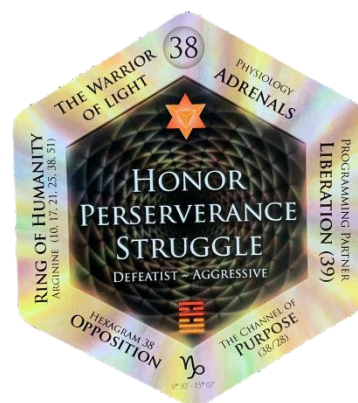
As you pour your heart, body and Soul into a fulfilling fight, it ceases to be a Struggle. The 38th Gift is the Gift of Perseverance. This is a Gift which thrives when you are up against the odds. These people are extremely active and physical – they make the impossible look effortless. They are people of action.'

*'As with the 39th Gift the 38th Gift has a strong link with the archetype of the warrior. Wherever there is a fight for a higher purpose especially against insurmountable odds, there you will find the 38th Gift stretching itself to its limits.'*

*'The 38th Gene Key sets the pattern of a human struggle – the Struggle of all form to reach Spirit. In humans it is represented by the quest of the inner Warrior of Light against the dark forces of the lower nature. At a certain level this Spirit enters into the realm of a pure frequency - into the realm of Honour.'*

*'Honour is a dynamic living energy. **Honour is action that is rooted in a Love so pure that it sacrifices itself, without a thought, to serve a higher aspiration.** Every act of Honour carries an equalising force into the world rather than a divisive force. If the act brings people together into a high frequency field, it is an act of Honour. **Honour always carries the frequency of mercy and surrender within it.'***

*'The 38th Siddhi retains a deep mythic connection to Struggle, aggression and all the darkest sides of human nature, however, people in whom this Siddhi manifests are the highest form of warrior. **They become our Holy Warriors those who cannot be tarnished by the world.** As the Warrior of Light the 38th Siddhi does not fight the lower nature; rather it absorbs the forces of darkness deep inside itself through its action and in doing so shines out with immense purity in the world.'*



*'Whenever a Siddhi dawns in a human being, its programming partner is also activated. Thus the 39th Siddhi of Liberation is also released alongside the 38th Siddhi – **unleashing a chain reaction resulting in a stream of dynamic liberating energy lasting for generations and generations.'***

And finally, Neptune conjunct the North Node, opposite to the South Node, is holding this karmic balance for us as we transition into the next Cycle. Neptune and the North Node are on Gene Key 25 and the South Node is on Gene Key 46. So, if we look at South Node, at the patterns of the past, that are coming up to face us, we find the Shadow is **Seriousness**, the Gift is **Delight** and the Siddhi is **Ecstasy** and it has echoes of the legend of Pholus and Dionysus.

*'Seriousness is the most widespread of all the diseases on the planet. Seriousness is all about attachment. **The deeper we are in the Mays, the illusion, the more attached and constricted we are.** We can loosen our attachments beginning with our mind and its beliefs and opinions. **It is in forgetting our Eternal Nature, that we take on a deep level of Constriction.'***

*'To escape the low frequency of Seriousness, it takes a single, simple quality – Acceptance. **Acceptance is the programming partner of the 46th Gift of Delight.** Delight is the sense of freedom that emerges from an appreciation of the richness of being alive. This Gift is about feeling alive within the realm of matter. **If your attitude remains open and accepting you will see that the Universe is at work in you.'***

*'Synchronicity is an energy field available to all with or without the 46th Gene Key in their profile. **The only prerequisite for tapping into synchronicity is this Delight.** It is not about being an aimless drifter – it is about holding your goals so lightly that they can be dropped at any point if necessary.'*



*'The new paradigm coming into the world is one of fusion, of the melding of Heaven and Earth, of the spiritual and the material. Ecstasy is the highest frequency of the 46th Gene Key and it occurs only through the heart. It is in fact the true nature of Humanity. There is actually no work more important on this Earth than play. When we become truly playful we reshape the nature of our Collective reality.'*

*'Ecstasy is not a word that most people consider when they think of themselves and their lives. Yet it is this block at the mental level that keeps us at a frequency far from Ecstasy. **If you can open your heart to receive the frequencies they represent, the frequencies will begin to seek you out, for Siddhic states are all a matter of magnetism.** People who manifest this Siddhi cannot go unnoticed in the world. The Love that swirls around them is so tangible that it can even be felt by people of the densest frequency.'*

*'It is not that this 46th Siddhi is any more powerful than any other Siddhi, but that this manifestation of Divine consciousness is so close to the physical realm and it emerges through the physical body. **Matter is penetrated completely by the Spirit.'***

The North Node remains on Gene Key 25, and this month Neptune comes to join to bring us all to a collective realisation of the **Myth of the Sacred Wound** which moves through the Shadow of **Constriction** to the Gift of **Acceptance** to the Siddhi of **Universal Love**.

*'If there is a single Gene Key among the 64 Gene Keys that captures the essence of the entire work, it is this 25th Gene Key. Within the 25th Gene Key lies the secret that men and women have always sought – the secret of love. **Here too lies the antithesis of love, the Shadow of Constriction.** Constriction exists wherever love is absent and it is the underlying source of all human suffering. **Constriction is the physical manifestation of fear at an individual and Universal level.** It is even there at the point of conception, passed subtly from the sperm to the egg, containing the genetic fingerprints of the Constriction felt by our ancestors as they struggled from their births to their death.'*

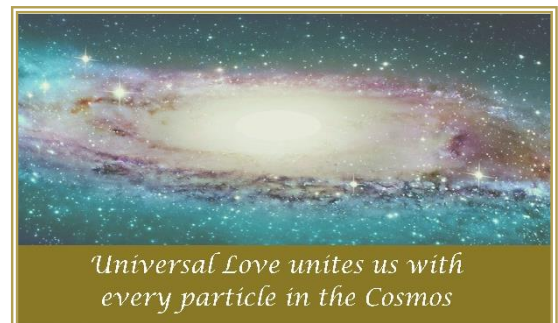
*'Here in the 25th Gift we arrive at one of the greatest and most powerful of all human Gifts, the Gift of Acceptance. **Because this 25th Gift represents the portal to the true nature of the Universe as Love, it has incredible relevance for all human beings.** The flowering of Love follows the burgeoning of Acceptance. Acceptance is based on taking the soft approach to life.'*

*'In order to accept something about yourself, and especially something uncomfortable, it first must be recognised. **This kind of Acceptance takes place when you build up the courage to look into your own Shadow.** The only way to transform the Shadow is to have the courage to simply feel the fear.*

*The state of Acceptance is akin to "Spiritual Springtime" where everything seems new again, flowing more easily and freely. **The 25th Gift makes it difficult to hold any resentment, judgement or indeed worry about life – for now you are carrying the Seed of Love.** You will walk through life with an air of another world about you, whilst at the same time being deeply grounded and open to others. **When you can finally accept everything in your life just as it is right now you will have embraced the human wound.'***

*'The Sacred Wound that hides within each human being can be understood at three levels of consciousness. At the Shadow frequency, the wound maintains human suffering, at the Gift frequency the wound provokes humanity to evolve and **at the Siddhic frequency the wound reveals humanity's true nature as an Expression of Universal Love.** '*

*'All that love locked away in our DNA. The DNA is just filtering it through the memory – the Ancestral memory. This is the embracing of the collective wound. It is the passage to Christhood or Buddhahood. **We cannot 'get' there. We just have to keep opening, accepting, and the path leads us there of its own accord.** It is our natural state. It has a certain flavour, a certain peacefulness – it is Universal Love, Unconditional Love. **It is a deep knowing that emanates from our cells, the knowing that we are One.'***



*'Eventually, this revelation gives rise to the quantum leap to the Siddhic level of consciousness. **The bodies of these people have undergone a radical transformation in order to be the receiver or chalice for pure consciousness.** Those Beings who have attained realisation through this 25th Siddhi become, in some form, legends. Whether Buddha or the Christ – the aura of such a person shines like a light down the centuries and is felt within the bloodlines of all future generations. **Every time someone attains the 25th Siddhi a great genetic constriction is removed throughout Humanity.'***

*As you are no doubt aware, 2025 is a '9 Year' a year of completion and intentional conscious choices. As we consciously choose to witness all that unfolds from a place of non-judgment holding all life in **Acceptance** of their individual choices, we are assisting in releasing outdated emotions and reactions both personally and collectively. This is not about numbing ourselves, but rather in taking the **Gentle** path, we enter into the expansive field of **Universal Love** and in this intensified frequency we become the **Warriors of Light.***

*Love and Blessings to All.*