

▼ Shown: DSX11000



## Safety and Performance

- High-strength, light-weight aluminium, slimline design suited for complete operator safety
- Fully enclosed drive for maximum safety
- Built-in, work-at-height safety tether connection
- Retained quick release push-button
- Patented, easy-to-use, quick release, retained reaction arm
- Fine tooth ratchet prevents the tool 'locking on'
- High-cycle design with fewer moving parts making it a more efficient tool to operate, maintain or repair
- 35° rotation angle and rapid return stroke for fast operation.

## Simplicity

- Includes a robust handle or handle with lifting eye bolt which mounts on either side of the tool for extra maneuverability and safer operation
- Push-button square drive and reaction arm for fast changes and adjustments
- Easily accessible work-at-height connection point.

## Accuracy

- Constant torque output provides accuracy of  $\pm 3\%$  across the full stroke.

## ATEX declared

- All DSX tools are CE - ATEX declared.

## Setting Industry-First Safety Standards



### Work-at-Height Connection

Built-in, work-at-height safety tether connection.



### Fully Retained Reaction Arm

Patented, fully retained reaction arm with easy-to-use quick release, helps prevent injuries when working-at-height.



### Secured Square Drive

Retained quick release push-button.



### Ergonomic Tool Handle

Robust ergonomic positioning handle comes supplied as standard with every DSX tool. The SHW10EA is a handle with lifting eye for the DSX25000.

Compatible DSX-Series wrenches	Ergonomic Handle (Standard)
DSX1500, 3000, 5000	<b>SWH6A</b>
DSX11000	<b>SWH10A</b>
DSX25000	<b>SWH10EA</b>



### Bolting Integrity Software

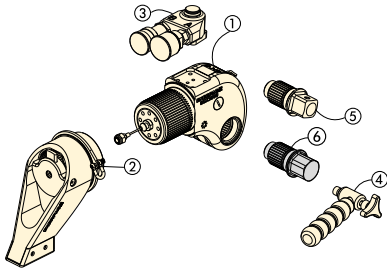
Enerpac Bolting Integrity Software Solutions play a key role in

implementing and managing an Integrity Program for bolted connections.

The software offers Tool selection, Bolt Load calculations and Tool pressure settings, as well as a combined Application Data Sheet and Joint Completion Report.

Custom Joint information can also be entered. See page 412.

# Square Drive Hydraulic Torque Wrenches



Standard are: ① ② ③ ④ ⑤

Item ⑥ is optional.

- ① Drive Unit
- ② Reaction Arm
- ③ Hose Swivel
- ④ Ergonomic Tool Handle
- ⑤ Square Drive
- ⑥ Allen Key-Drive (option)

**Select the Right Torque**  
Choose your Enerpac Torque Wrench using the untightening rule of thumb: Loosening torque equals about 250% of tightening torque.

## DSX Series



Nominal Torque Output:

**32.617 Nm | 24.057 Ft.lbs**

Square Drive Range:

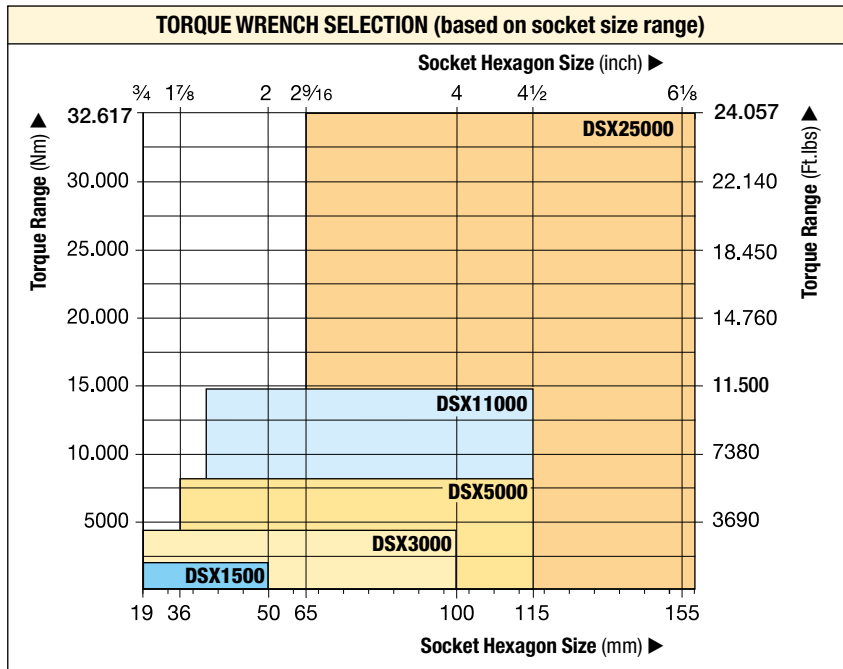
**3/4 - 2 1/2 inch**

Nose Radius:

**24 - 64 mm**

Maximum Operating Pressure:

**690 bar**



### BUS-Series, Back-Up Spanners

Hands-free tool to be used to stop the back nut from turning during make up or break out.

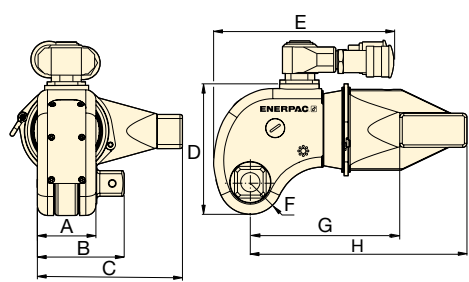
Page: **217**

▼ The rigid design of the DSX-Series torque wrenches provides durability, reliability and safety.



**BSH-Series Sockets**  
Use only Heavy-Duty Impact Sockets for power driven torquing equipment.

Page: **216**



Nominal Torque at 690 bar		Minimum Torque at 69 bar		Square Drive Size (inch)	Torque Wrench Model Number	Dimensions (mm)								(kg)	
(Nm)	(Ft.lbs)	(Nm)	(Ft.lbs)			Model Nr. (included with wrench)	A	B	C	D	E	F	G		H
1913	1411	191	141	3/4	DSX1500-08	<b>DSX1500</b>	44	67	107	96	145	24	114	163	2,2
4383	3233	438	323	1	DSX3000-08	<b>DSX3000</b>	58	86	144	129	171	32	148	215	4,8
7640	5635	764	563	1 1/2	DSX5000-08	<b>DSX5000</b>	69	112	173	148	192	38	180	260	8,1
14.914	11.000	1491	1100	1 1/2	DSX11000-08	<b>DSX11000</b>	87	129	215	181	222	48	227	325	14,4
32.617	24.057	3262	2406	2 1/2	DSX25000-08	<b>DSX25000</b>	117	176	288	244	266	64	281	426	32,5

Maximum Torque Output:

**32.617 Nm**

Hexagon Size Allen Drive:


**1/2 - 2 1/4 inch**

Hexagon Size Allen Drive:

**14 - 85 mm**

For  
**DSX**  
Series



Torque Wrench	Optional Allen-Key Drives, Imperial				Optional Allen-Key Drives, Metric			
	Hexagon Size	Maximum Torque	Model Number	Dim.	Hexagon Size	Maximum Torque	Model Number	Dim.
(max. torque)	(inch)	(Ft.Lbs)		B1 (mm)	(mm)	(Nm)		B1 (mm)
 <b>DSX1500</b> (1411 Ft.lbs) (1913 Nm)	1/2	350	DDA15008	67	14	644	DDA1514	67
	5/8	690	DDA15010	67	17	1152	DDA1517	67
	3/4	1200	DDA15012	67	19	1627	DDA1519	67
	7/8	1411	DDA15014	67	22	1913	DDA1522	67
	1	1411	DDA15100	67	24	1913	DDA1524	67
<b>DSX3000</b> (3233 Ft.lbs) (4383 Nm)	5/8	690	DDA30010	86	17	1152	DDA3017	86
	3/4	1200	DDA30012	86	19	1627	DDA3019	86
	7/8	1900	DDA30014	86	22	2495	DDA3022	86
	1	2830	DDA30100	86	24	3376	DDA3024	86
	1 1/8	3233	DDA30102	86	27	4383	DDA3027	86
	1 1/4	3233	DDA30104	86	30	4383	DDA3030	86
	-	-	-	86	32	4383	DDA3032	86
<b>DSX5000</b> (5635 Ft.lbs) (7640 Nm)	5/8	690	DDA50010	112	17	1152	DDA5017	112
	3/4	1200	DDA50012	112	19	1627	DDA5019	112
	7/8	1900	DDA50014	112	22	2495	DDA5022	112
	1	2830	DDA50100	112	24	3376	DDA5024	112
	1 1/8	5325	DDA50102	112	27	4610	DDA5027	112
	1 1/4	5635	DDA50104	112	30	7640	DDA5030	112
	-	-	-	-	32	7640	DDA5032	112
<b>DSX11000</b> (11.000 Ft.lbs) (14.914 Nm)	1 1/4	5635	DDA110104	129	30	7640	DDA11030	129
	1 3/8	9958	DDA110106	129	32	7640	DDA11032	129
	1 1/2	9958	DDA110108	129	36	10.846	DDA11036	129
	1 5/8	11.000	DDA110110	129	41	14.914	DDA11041	129
	1 3/4	11.000	DDA110112	129	46	14.914	DDA11046	129
<b>DSX25000</b> (24.057 Ft.lbs) (32.617 Nm)	1 1/2	9958	DDA250104	176	36	10.846	DDA25036	176
	1 5/8	16.433	DDA250106	176	41	16.107	DDA25041	176
	1 3/4	15.200	DDA250112	176	46	22.777	DDA25046	176
	1 7/8	22.777	DDA250114	176	50	29.211	DDA25050	176
	2	24.057	DDA250200	176	55	32.617	DDA25055	176
	2 1/4	24.057	DDA250204	176	60	32.617	DDA25060	176
	-	-	-	-	65	32.617	DDA25065	176
	-	-	-	-	70	32.617	DDA25070	176
	-	-	-	-	75	32.617	DDA25075	176
	-	-	-	-	85	32.617	DDA25085	176