

# High Pressure Hand Pump and Accessories

▼ HPT-1500



- Lightweight and portable high-pressure hand pump
- Two-speed operation displaces a larger volume of oil per stroke, reducing cycle times for many testing applications
- Includes a pressure gauge and coupler for direct connection to GT-Series bolt tensioners
- Integrated relief valve set at 1500 bar.

## HPT, HT, B Series

Reservoir Capacity:

**2,5 litres**

Flow at Rated Pressure:

**0,61 cm<sup>3</sup>/stroke**

Maximum Operating Pressure:

**1500 bar**



This pump operates at ultra-high pressure, use only the specified fittings and hoses designed for these pressures.

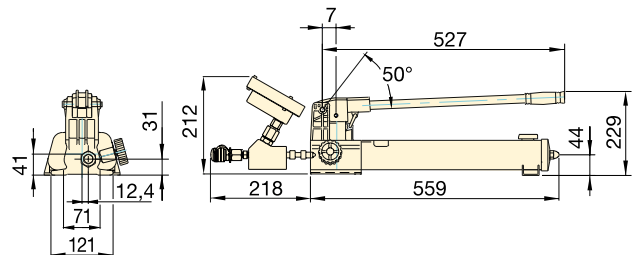
Page: 53



### Applications

The hand pump is ideally suited for use with hydraulic bolt tensioning tools and hydraulic nuts.

Page: 44



### 1500 bar ULTRA-HIGH PRESSURE PUMP

Pump Type	Useable Oil Capacity (litres)	Model Number	Pressure Rating (bar)		Oil Displacement per Stroke (cm <sup>3</sup> )		High Pressure Oil Port with female coupler	Weight (kg)
			1st stage	2nd stage	1st stage	2nd stage		
Two Speed	2,54	<b>HPT-1500</b>	14	1500	16,22	0,61	1/4" BSPM + BR-150	9,0

### 1500 bar HOSES

Model Number		Hose End 1	Hose End 2	Length (m)
HT-1503		1/4" BSPM 120° Cone	1/4" BSPM 120° Cone	1,0
HT-1510		1/4" BSPM 120° Cone	1/4" BSPM 120° Cone	3,0
HT-1503HR*		<b>BH-150</b>	<b>BR-150</b>	1,0
HT-1510HR*		<b>BH-150</b>	<b>BR-150</b>	3,0

\* Includes dust caps.

### 1500 bar COUPLERS

Description		Complete Set	Female Half	Male Half
Quick Disconnect Coupler*		<b>B-150</b>	<b>BR-150</b>	<b>BH-150</b>
Quick Disconnect Coupler and Adaptor Kit*		<b>BW-150AW</b>	-	-
Quick Disconnect Blanking Coupler Set*		<b>B-150B</b>	-	-

\* Includes dust caps.