

# BRC, BRP-Series, Pull Cylinders

▼ Shown from left to right: BRC-25, BRC-46, BRP-306, BRP-606, BRP-106C

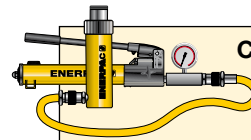


- High strength alloy steel construction
- Plunger blow-out protection to prevent rod over-extension
- Hard chrome-plated plunger for long life
- Replaceable links on BRP-models
- Baked enamel finish for increased corrosion resistance
- CR-400 coupler and dust cap included on all models
- Plunger wiper reduces contamination, extending cylinder life
- Single-acting, spring return.

▼ Ship building, welding and Enerpac pull cylinders go hand in hand.



## The Ultimate in Pulling Power



### Cylinder-Pump Sets

All cylinders marked with an \* are available as sets (cylinder, gauge, couplers, hose and pump) for your ordering convenience.

Page: 62



### Gauges

Minimize the risk of overloading and ensure long, dependable service from your equipment. Refer to the System Components Section for a full range of gauges.

Page: 118



### Attachments and Accessories

BRC-25 and BRC-46 units have base, collar and plunger threads to affix a range of optional attachments and accessories, such as chains, saddles and extension tubes.

Page: 165

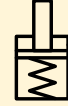
▼ To lift a load bearing mast into place, BRP-series cylinders were used to tension the supporting cables.



# Single-Acting, Pull Cylinders

BRC Cylinder Mounting Dimensions (mm)				
Model Number	Base Mounting Hole V	Collar Thread W	Collar Thd. Lgth. X	Mtg. Thd. Lgth. Z
<b>BRC-25</b>	3/4" - 14 NPT	1 1/2" - 16 UN	24	17
<b>BRC-46</b>	1 1/4" - 11 1/2 NPT	2 1/4" - 14 UN	26	24
<b>BRC-106</b>	M30 x 2	M85 x 2	25	24

**BRC,  
BRP  
Series**



Capacity:

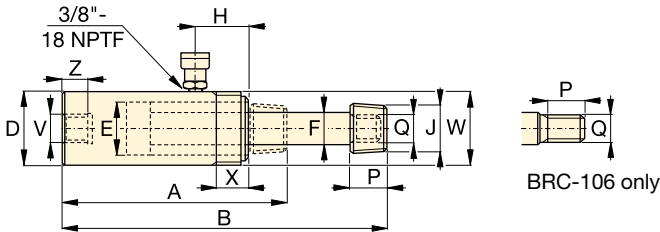
**2,5 - 50 ton**

Stroke:

**127 - 155 mm**

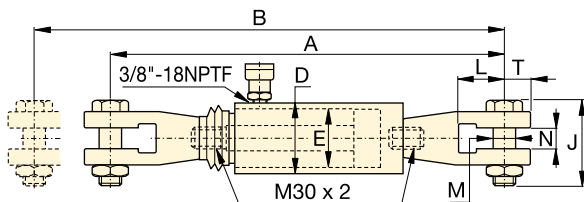
Maximum Operating Pressure:

**700 bar**

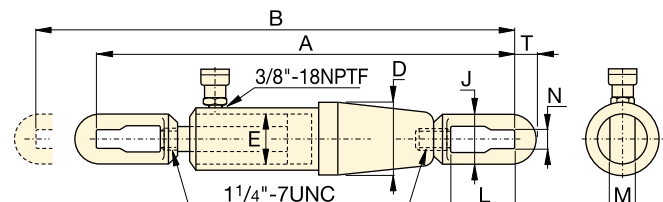


**BRC-25, -46, 106**

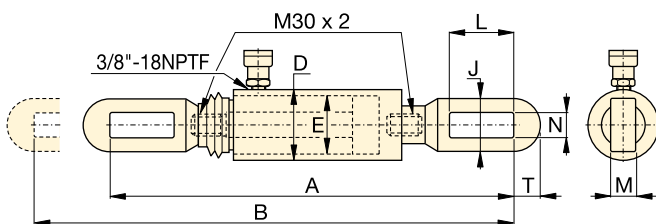
Cylinder Capacity	Stroke	Model Number	Cyl. Effect. Area	Oil Cap.	Coll. Height	Ext. Height	Outs. Dia.	Cyl. Bore Dia.	Plgr. Dia.	Top to Inlet Port H	Saddle Diameter	Plgr. Thd. Lgth. P	Plunger Outside Thread Q	
ton (kN)	(mm)		(cm <sup>2</sup> )	(cm <sup>3</sup> )	A (mm)	B (mm)	D (mm)	E (mm)	F (mm)	H (mm)	J (NPT)	P (mm)	Q	(kg)
<b>2,5 (24)</b>	127	<b>BRC-25</b>	3,5	45	264	391	48	28,4	19,0	45	3/4" - 14	28	1 1/16" - 24	1,8
<b>5 (51)</b>	140	<b>BRC-46</b>	7,3	101	301	441	57	42,9	30,2	42	1 1/4" - 11 1/2	32	1 3/16" - 16	4,5
<b>10 (105)</b>	151	<b>BRC-106</b>	15,0	228	289	440	85	54,1	31,8	39	-	25	M30x2	9,5



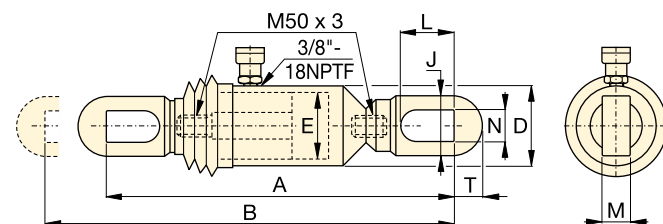
**BRP-106C**



**BRP-306**



**BRP-106L**



**BRP-606**

Cylinder Capacity	Stroke	Model Number	Cyl. Effect. Area	Oil Cap.	Coll. Height	Ext. Height	Outside Dia.	Cyl. Bore Dia.	Link Height	Link Opening L	Link Thickness M	Link Width N	Slot to Link End T	
ton (kN)	(mm)		(cm <sup>2</sup> )	(cm <sup>3</sup> )	A (mm)	B (mm)	D (mm)	E (mm)	J (mm)	L (mm)	M (mm)	N (mm)	T (mm)	(kg)
<b>10 (105)</b>	151	<b>BRP-106C*</b>	15,0	227	587	738	85	54,1	119	62	30	35	32	15,9
	151	<b>BRP-106L*</b>	15,0	227	541	692	85	54,1	67	115	22	30	32	13,2
<b>30 (326)</b>	155	<b>BRP-306*</b>	46,6	722	1085	1240	136	88,9	114	145	35	39	50	48,1
<b>50 (505)</b>	152	<b>BRP-606*</b>	72,1	1096	719	871	140	110,0	130	149	39	50	70	53,5

\* Available as set, see note on previous page. NOTE: BRP-106C, BRP-106L and BRP-606 are fitted with rubber bellows for rod protection.