

# RCH-Series, Hollow Plunger Cylinders

▼ Shown from left to right: RCH-306, RCH-120, RCH-1003

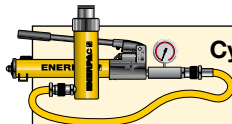


- Hollow plunger design allows for both, pull and push forces
- Single-acting, spring return
- Nickel-plated, floating center tube on models over 20 ton increases product life
- Baked enamel finish for increased corrosion resistance
- Collar threads for easy fixturing
- RCH-120 includes AR-630 coupler and has 1/4" NPTF port
- RCH-121 and RCH-1211 have FZ-1630 reducer and AR-630 coupler, all other models feature CR-400 coupler.

▼ Hollowplunger cylinder RCH-1003 used in an application for intermediate boom suspension on a dragline.



## Versatility in Testing, Maintenance and Tensioning Applications




**Cylinder-Pump Sets**  
All cylinders marked with an \* are available as sets (cylinder, gauge, couplers, hose and pump) for your ordering convenience.

Page: 62



**Ultra-Lightweight Aluminium Cylinders**  
If you need a higher cylinder capacity-to-weight-ratio the lightweight RACH-Series are the perfect choice.

Page: 16



**Saddles**  
Most RCH-Series cylinders are equipped with smooth saddles. See table at next page for optional threaded saddles and all dimensional information.

Page: 27

| Cylinder Capacity | Stroke | Model Number | Cyl. Effect. Area  | Oil Cap.           |
|-------------------|--------|--------------|--------------------|--------------------|
| ton (kN)          | (mm)   |              | (cm <sup>2</sup> ) | (cm <sup>3</sup> ) |
| 13 (125)          | 8      | RCH-120      | 17,9               | 14                 |
|                   | 42     | RCH-121*     | 17,9               | 75                 |
|                   | 42     | RCH-1211     | 17,9               | 75                 |
|                   | 76     | RCH-123      | 17,9               | 136                |
| 20 (215)          | 49     | RCH-202*     | 30,7               | 150                |
|                   | 155    | RCH-206      | 30,7               | 476                |
| 30 (326)          | 64     | RCH-302*     | 46,6               | 298                |
|                   | 155    | RCH-306      | 46,6               | 722                |
| 60 (576)          | 76     | RCH-603*     | 82,3               | 626                |
|                   | 153    | RCH-606      | 82,3               | 1259               |
| 95 (931)          | 76     | RCH-1003*    | 133,0              | 1011               |

\* Available as set, see note on this page.

# Single-Acting, Hollow Plunger Cylinders

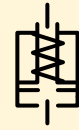


## Hoses

Enerpac offers a complete line of high quality hydraulic hoses. To ensure the integrity of your system, specify only Enerpac hydraulic hoses.

Page: **120**

## RCH Series



Capacity:

**13-95 ton**

Stroke:

**8-155 mm**

Center Hole Diameter:

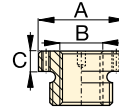
**19,6-79,0 mm**

Maximum Operating Pressure:

**700 bar**

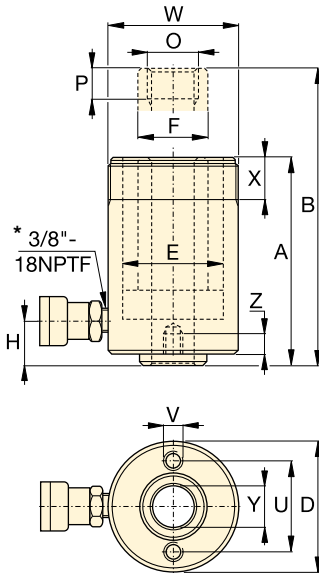
### Optional Heat Treated Hollow Saddles

| Saddle Type     | Cylinder Model Number | Saddle Model Nr. | Saddle Dimensions (mm) |                |    |
|-----------------|-----------------------|------------------|------------------------|----------------|----|
|                 |                       |                  | A                      | B              | C  |
| Threaded Hollow | RCH-202, 206          | HP-2015          | 53                     | 1" - 8         | 9  |
|                 | RCH-302, 306          | HP-3015          | 63                     | 1 1/4" - 7     | 9  |
|                 | RCH-603, 606          | HP-5016          | 91                     | 1 5/8" - 5 1/2 | 12 |
|                 | RCH-1003              | HP-10016         | 126                    | 2 1/2" - 8     | 13 |

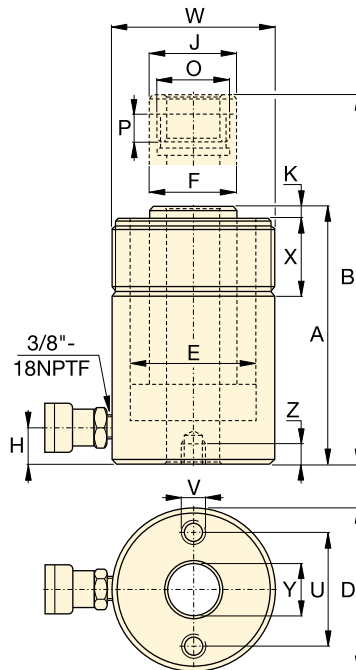


Smooth hollow saddles are standard on all RCH-models (except RCH-120, RCH-1211).

RCH-121 and RCH-1211 have a 47 mm dia. boss that protrudes 6 mm from base.



**RCH-120 to RCH-123 models**  
\* 1/4" NPTF for RCH-120 only



**RCH-202 to RCH-1003 models**

### Base Mounting Hole Dimensions (mm)

| Model Number | Bolt Circle U | Thread V       | Thread Depth Z |
|--------------|---------------|----------------|----------------|
| RCH-120      | 50,8          | 5/16" - 18 UNC | 9,0            |
| RCH-121      | -             | -              | -              |
| RCH-1211     | -             | -              | -              |
| RCH-123      | 50,8          | 5/16" - 18 UNC | 12,7           |
| RCH-202      | 82,6          | 3/8" - 16 UNC  | 9,4            |
| RCH-206      | 82,6          | 3/8" - 16 UNC  | 9,4            |
| RCH-302      | 92,2          | 3/8" - 16 UNC  | 14,0           |
| RCH-306      | 92,2          | 3/8" - 16 UNC  | 14,0           |
| RCH-603      | 130,3         | 1/2" - 13 UNC  | 14,0           |
| RCH-606      | 130,3         | 1/2" - 13 UNC  | 14,0           |
| RCH-1003     | 177,8         | 5/8" - 11 UNC  | 19,0           |

| Coll. Height | Ext. Height | Out. Dia. | Cyl. Bore Dia. | Plgr. Dia. | Cyl. Base to Advance Port | Saddle Dia. | Saddle Protrusion from Plgr. | Plunger Internal Thread | Plunger Thread Length | Collar Thread | Collar Thread Length | Center Hole Dia. | Model Number   |
|--------------|-------------|-----------|----------------|------------|---------------------------|-------------|------------------------------|-------------------------|-----------------------|---------------|----------------------|------------------|----------------|
| A (mm)       | B (mm)      | D (mm)    | E (mm)         | F (mm)     | H (mm)                    | J (mm)      | K (mm)                       | O                       | P (mm)                | W             | X (mm)               | Y (mm)           | (kg)           |
| 55           | 63          | 69        | 54,1           | 35,1       | 9                         | -           | -                            | 3/4" - 16 UN            | 16                    | 2 3/4" - 16   | 30                   | 19,6             | 1,5 RCH-120    |
| 120          | 162         | 69        | 54,1           | 35,1       | 19                        | -           | -                            | -                       | -                     | 2 3/4" - 16   | 30                   | 19,6             | 2,8 RCH-121*   |
| 120          | 162         | 69        | 54,1           | 35,1       | 19                        | -           | -                            | 3/4" - 16 UN            | 16                    | 2 3/4" - 16   | 30                   | 19,6             | 2,8 RCH-1211   |
| 184          | 260         | 69        | 54,1           | 35,1       | 19                        | -           | -                            | -                       | -                     | 2 3/4" - 16   | 30                   | 19,6             | 4,4 RCH-123    |
| 162          | 211         | 98        | 73,1           | 54,1       | 19                        | 54          | 9,7                          | 1 9/16" - 16 UN         | 19                    | 3 7/8" - 12   | 38                   | 26,9             | 7,7 RCH-202*   |
| 306          | 461         | 98        | 73,1           | 54,1       | 25                        | 54          | 9,7                          | 1 9/16" - 16 UN         | 19                    | 3 7/8" - 12   | 38                   | 26,9             | 14,1 RCH-206   |
| 178          | 242         | 114       | 88,9           | 63,5       | 21                        | 63          | 9,0                          | 1 13/16" - 16 UN        | 22                    | 4 1/2" - 12   | 42                   | 33,3             | 10,9 RCH-302*  |
| 330          | 485         | 114       | 88,9           | 63,5       | 25                        | 63          | 9,0                          | 1 13/16" - 16 UN        | 22                    | 4 1/2" - 12   | 42                   | 33,3             | 21,8 RCH-306   |
| 247          | 323         | 159       | 123,9          | 91,9       | 31                        | 91          | 12,0                         | 2 3/4" - 16 UN          | 19                    | 6 1/4" - 12   | 48                   | 53,8             | 28,1 RCH-603*  |
| 323          | 476         | 159       | 123,9          | 91,9       | 31                        | 91          | 12,0                         | 2 3/4" - 16 UN          | 19                    | 6 1/4" - 12   | 48                   | 53,8             | 35,4 RCH-606   |
| 254          | 330         | 212       | 165,1          | 127,0      | 38                        | 126         | 12,0                         | 4" - 16 UN              | 25                    | 8 3/8" - 12   | 60                   | 79,0             | 63,0 RCH-1003* |