

# SP-Series, 50 Ton Hydraulic Punch

▼ Shown: SP-50100



- Available as a complete set including electric pump and hoses
- Double-acting cylinder design for fast cycle times
- Punch and die changeover tools included
- Lifting bracket included
- Adjustable power stripper prevents movement of the metal during stripping
- CR-400 female couplers included.



◀ Save time using the 50-ton Enerpac Punch.

## Cuts the Time Spent Forming Holes



### Depth Stop

For simplified repetitive punching applications an adjustable Depth Stop is available.

Order model number:  
**SP-110.**



### Foot Mounting Kit

A foot mounting kit for easy mounting of the 50 ton punch to workbench or fixture is available.

Order model number:  
**SP-120.**



### Ordering Information


The 50-ton Hydraulic Punch may be ordered by itself or as a set with an electric pump. A punch and die may be ordered as a matched set. Please refer to the selection chart information.

▼ Shown below is the 50 ton punch with SP-120 and SP-110 assembled.



# 50 Ton Double-Acting Hydraulic Punch

## ▼ QUICK SELECTION CHART PUNCH SETS

Model Number Punch*	Included			Set Model Number	Weight (kg)
	Punch & Die Sets 	Pump	Hose (2x)		
SP-50	All**	—	—	SP-50100	116
SP-50	All**	ZE4410SE	HC-7206	SP-5000	174

\* Punch Oil Capacity:  
Advance: 278 cm<sup>3</sup>  
Retract: 229 cm<sup>3</sup>

\*\* All standard sets from chart below.

## SP Series



Capacity:

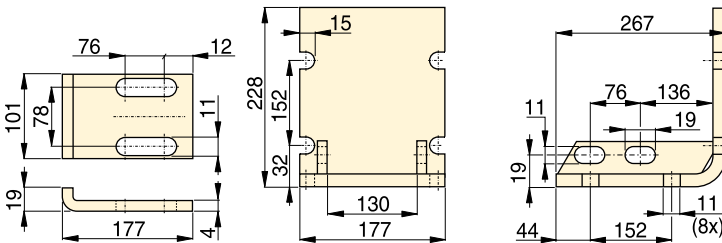
**50 ton (490 kN)**

Hole Sizes:

**13,5 - 26,2 mm**

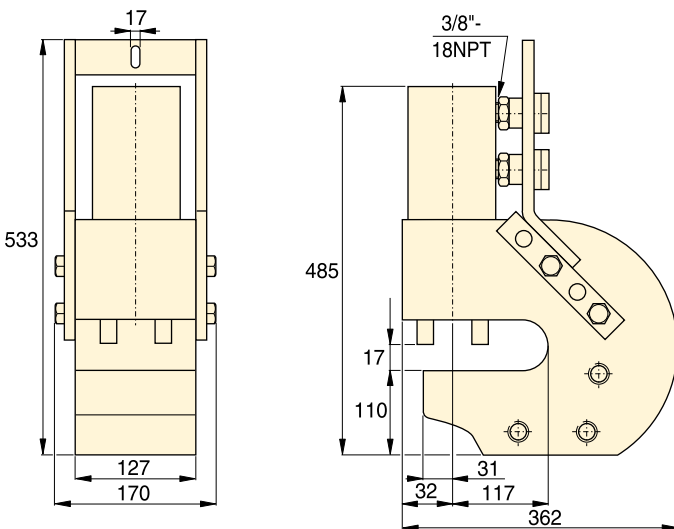
Maximum Operating Pressure:

**700 bar**



SP-110

SP-120



SP-50



### CAUTION!

Material thickness should not exceed hole diameter.




### CAUTION!

Chart below is for reference only! Maximum allowable material thickness to be punched varies with set wear.

### Steel Qualities (see table below):

- 1) Mild A-7
- 2) Boiler Plate
- 3) Structural A-36
- 4) Struct Corten (ASTM A242)
- 5) Cold Rolled C-1018
- 6) Hot Rolled C-1050
- 7) Hot Rolled C-1095
- 8) Hot Rolled C-1095 Annealed
- 9) Stainless Annealed
- 10) Stainless 304 Hot Rolled
- 11) Stainless 316 Cold Rolled

## ▼ STANDARD PUNCH AND DIE SELECTION CHART

Hole Shape	Hole Size (mm)	Bolt Size (mm)	Standard Punch and Die Set  Model Numbers	Maximum Allowable Material Thickness To Be Punched (mm)										
				1)	2)	3)	4)	5)	6)	7)	8)	9)	10)	11)
●	13,5	M12	SP-150	13,5	13,5	13,5	13,5	13,5	12,4	8,1	10,2	12,4	12,4	12,4
●	16,7	M16	SP-170	—	—	—	—	—	13,0	8,1	10,2	13,0	13,0	13,0
●	19,8	M18	SP-190	—	—	—	—	—	12,4	8,1	10,2	12,4	12,7	12,4
●	23,1	M20	SP-121	14,2	14,2	14,2	12,7	14,2	8,9	5,6	8,9	8,9	8,9	8,9
●	26,2	M24	SP-123	14,2	14,2	14,2	11,2	14,2	7,9	4,8	7,9	7,9	7,9	7,9