



X-Edition Torque Wrenches

S-Series Square Drive
W-Series Low Profile

Setting New
Standards in
Safety, Simplicity
and Performance



ENERPAC 

Square Drive Hydraulic Torque Wrenches

▼ Shown: S3000X



Safety and Performance

- Compact, high-strength uni-body construction provides a small operating radius without sacrificing endurance
- 35° rotation angle and rapid return stroke for fast operation
- Tough manifold design with added safety feature for enhanced operator safety

Simplicity

- 360° click-on reaction arm with quick release lever provides easier handling, even with gloves on
- Includes robust handle which mounts on both sides of tool for extra maneuverability
- Push button square drive release for quickly reversing the square drive for tightening or loosening

Versatility

- Available with optional enhanced tilt and swivel TSP300 manifold for horizontal and vertical maneuverability, with greater durability ¹⁾

Accuracy

- Constant torque output provides accuracy of $\pm 3\%$ across full stroke
- Optional Angle-of-Turn Indicator provides measurement of rotation.

Setting New Standards in Safety, Simplicity and Performance



Two Handle Styles

Robust angled positioning handle comes standard with every S-Series (X-Edition) tool. Straight positioning handles are available as accessories.

Compatible S-Series (X-Edition) wrenches	Model Nr. Angled positioning handles (standard)	Model Nr. Straight positioning handles (optional)
S1500X, S3000X	SWH6A	SWH6S
S6000X, S11000X	SWH10A	SWH10S
S25000X	SWH10EA ²⁾	

²⁾ SWH10EA is an eyebolt handle.



TSP - Pro Series Swivel

The optional TSP300 tilt and swivel manifold with robust interlocking design provides 360° X-axis rotation and 160° Y-axis rotation.

How to Order ¹⁾

Factory fitted to S-Series (X-Edition) wrenches: Insert a "P" prior to the "X" in the tool model number, example: **S1500PX**.

Order as an accessory using the model number: **TSP300**, which can be fitted to existing S-Series (X-Edition) wrenches. Includes male and female couplers.

Page: **6**



ATEX declared. Calibration certificate included.

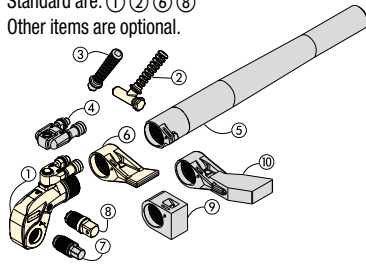
All X-edition tools are CE - ATEX declared and are shipped complete with a calibration certificate.

  II 2 GD T4

¹⁾ TSP300 is designed for X-Edition tools only, and is not compatible with standard edition tools. For replacement components for existing tools, refer to repair sheet on www.enerpac.com

X-Edition, Square Drive Torque Wrenches

Standard are: ① ② ⑥ ⑧
Other items are optional.



- | | |
|-------------------------------|-------------------------|
| ① Drive Unit | ⑥ Standard Reaction Arm |
| ② Angeled Positioning Handle | ⑦ Allen Drive |
| ③ Straight Positioning Handle | ⑧ Square Drive |
| ④ Pro Series Swivel | ⑨ Short Reaction Arm |
| ⑤ Reaction Tube Extension | ⑩ Extended Reaction Arm |



Select the Right Torque

Choose your Enerpac Torque Wrench using the untightening rule of thumb:
Loosening torque equals about 250% of tightening torque.

S

Series

X-Edition



Maximum Torque Output:

34.099 Nm

Square Drive Range:

3/4 - 2 1/2 inch

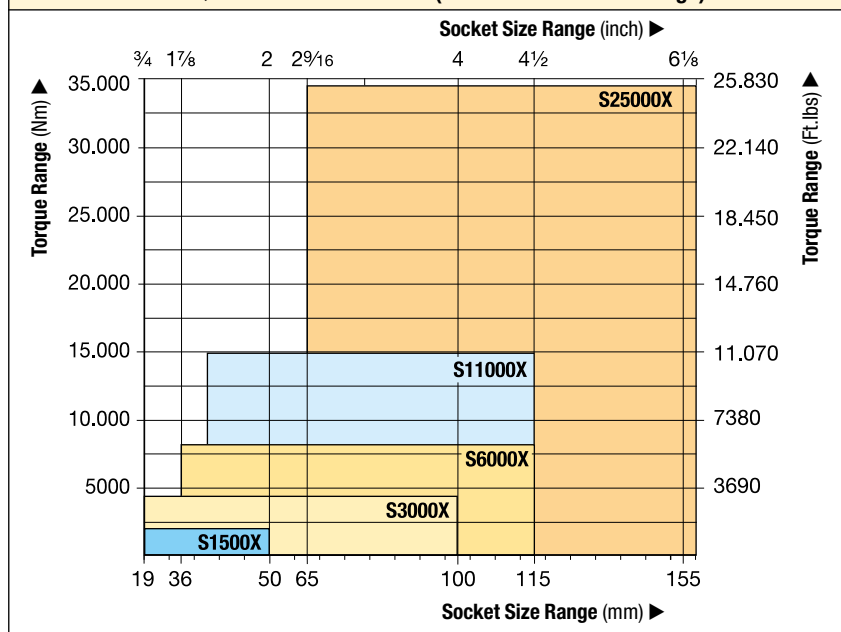
Nose Radius:

25 - 64 mm

Maximum Operating Pressure:

690 bar

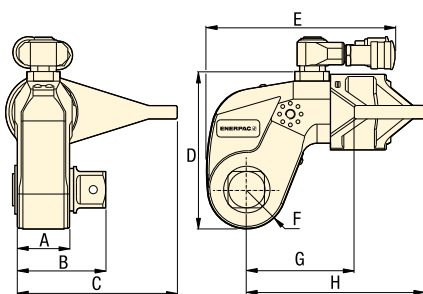
TORQUE WRENCH SELECTION (based on socket size range)



Accessory Options

A full list of optional accessories can be found on page 6.

▼ The rigid steel design of the S-Series torque wrenches provides durability, reliability and safety.



Nominal Torque at 690 bar		Minimum Torque at 69 bar		Square Drive Size (inch)	Square Drive Model Nr. (included with wrench)	Angle-of-Turn Model Nr. (optional)	Torque Wrench Model Number *	Dimensions (mm)								(kg)
(Nm)	(Ft.lbs)	(Nm)	(Ft.lbs)					A	B	C	D	E	F	G	H	
1952	1440	195	144	3/4	SD15-012	AOT15	S1500X	39	65	108	97	136	25	70	129	3,2
4373	3225	438	323	1	SD30-100	AOT30	S3000X	48	78	135	128	173	33	90	161	5,6
8338	6150	834	615	1 1/2	SD60-108	AOT60	S6000X	55	92	169	157	192	40	110	188	9,2
15.151	11.175	1516	1118	1 1/2	SD110-108	AOT110	S11000X	72	114	197	190	228	50	133	229	15,8
34.099	25.150	3410	2515	2 1/2	SD250-208	AOT250	S25000X	89	143	246	244	287	64	182	295	32,2

* To order a S-Series (X-edition) torque wrench fitted with a TSP300 tilt and swivel manifold, insert a "P" prior to the "X" in the tool model number, example: **S1500PX**.

Low Profile Hexagon Torque Wrenches

▼ Shown: W4206X hexagon cassette with W4000X drive unit (rear model shows optional straight handle)



Safety and Performance

- Superior strength to size ratio provides easy access to difficult to reach applications without sacrificing endurance
- 30° rotation angle and rapid return stroke provide fast operation
- Tough manifold design with added safety feature for enhanced operator safety

Simplicity

- Fast release drive unit enables rapid exchange of cassettes, no tools required
- Quick and easy disassembly for maintenance without special tools
- Include robust handle which mounts on both sides and the tops of cassettes to allow for extra maneuverability

Versatility

- Available with optional enhanced tilt and swivel TSP300 manifold for horizontal and vertical maneuverability, with greater durability ¹⁾
- X-Edition drive units, cassettes and most accessories are compatible with standard edition tools ¹⁾
- Drive unit compatible with UltraSlim and WCR-Series cassettes

Accuracy

- Constant torque output provides accuracy of $\pm 3\%$ across full stroke.

Setting New Standards in Safety, Simplicity and Performance



Two Handle Styles

Robust angled positioning handle comes standard with every W-Series (X-Edition) cassette. Straight positioning handles designed for extreme limited access applications are available as accessories.

Compatible with W-Series (X-Edition) Cassettes	Model Nr. Angled positioning handles (standard)	Model Nr. Straight positioning handles (optional)
W2000X, W4000X	SWH6A	SWH6S
W8000X, W15000X	SWH10A	SWH10S
W22000X, W35000X	SWH10EA ²⁾	

²⁾ SWH10EA is an eyebolt handle.



TSP - Pro Series Swivel

The optional TSP300 tilt and swivel manifold with robust interlocking design provides 360° X-axis rotation and 160° Y-axis rotation.

How to Order ¹⁾

Factory fitted to W-Series (X-Edition) drive units: Insert a "P" prior to the "X" in the tool model number, example: **W2000PX**.

Order as an accessory using the model number: **TSP300**, which can be fitted to existing W-Series (X-Edition) drive units. Includes male and female couplers.

Page: **6**



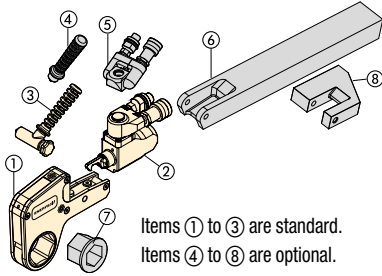
ATEX declared. Calibration certificate included.

All X-edition tools are CE - ATEX declared and are shipped complete with a calibration certificate.

  II 2 GD T4

¹⁾ TSP300 is designed for X-Edition tools only, and is not compatible with standard edition tools. For replacement components for existing tools, refer to repair sheet on www.enerpac.com

W-Series, X-Edition Hexagon Wrenches



- ① Hexagon Cassette
- ② Drive Unit
- ③ Angled Positioning Handle
- ④ Straight Positioning Handle

- ⑤ Pro Series Swivel
- ⑥ Extended Reaction Arm
- ⑦ Reducer Insert
- ⑧ Reaction Paddle

Hexagon Cassettes and Reducer Inserts

Full range of interchangeable hexagon cassettes and reducing inserts provides maximum versatility. Details available at www.enerpac.com

Maximum Torque Output:

47.454 Nm

Hexagon Range:

27 - 155 mm | 1 1/16 - 6 1/8"

Maximum Operating Pressure:

690 bar

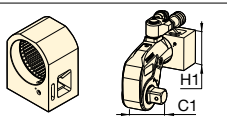
▼ SELECTION CHART - For Full Technical Details Refer to www.enerpac.com

W2000X Drive Unit Nominal Torque 2766 Nm			W4000X Drive Unit Nominal Torque 5661 Nm			W8000X Drive Unit Nominal Torque 11.484 Nm			W15000X Drive Unit Nominal Torque 20.785 Nm			W22000X Drive Unit Nominal Torque 30.506 Nm			W35000X Drive Unit Nominal Torque 47.454 Nm		
Cassette Model Number	Hexagon Size (mm)	(inch)	Cassette Model Number	Hexagon Size (mm)	(inch)	Cassette Model Number	Hexagon Size (mm)	(inch)	Cassette Model Number	Hexagon Size (mm)	(inch)	Cassette Model Number	Hexagon Size (mm)	(inch)	Cassette Model Number	Hexagon Size (mm)	(inch)
W2101X	27	1 1/16	W4105X	33	1 5/16	W8114X	48	1 7/8	W15207X	62	2 7/16	W22215X	75	2 15/16	W35302X	80	3 1/8
W2102X	28	1 1/8	W4106X	35	1 3/8	W8115X	49	1 15/16	W15208X	63	2 1/2	W22300X	77	3	W35303X	81	3 3/16
W2103X	30	1 3/16	W4107X	36	1 1/16	W8200X	50	2	W15209X	65	2 9/16	W22301X	78	3 1/16	W35304X	83	3 1/4
W2104X	32	1 1/4	W4108X	38	1 1/2	W8201X	52	2 1/16	W15210X	67	2 5/8	W22302X	80	3 1/8	W35305X	84	3 5/16
W2105X	33	1 5/16	W4109X	40	1 9/16	W8202X	54	2 1/8	W15211X	68	2 11/16	W22303X	81	3 3/16	W35085MX	85	—
W2106X	35	1 3/8	W4110X	41	1 5/8	W8203X	55	2 3/16	W15212X	70	2 3/4	W22304X	83	3 1/4	W35306X	86	3 3/8
W2107X	36	1 7/16	W4111X	43	1 11/16	W8204X	57	2 1/4	W15213X	71	2 13/16	W22305X	84	3 5/16	W35307IX	—	3 7/16
W2108X	38	1 1/2	W4112X	44	1 3/4	W8205X	59	2 5/16	W15214X	73	2 7/8	W22085MX	85	—	W35308X	89	3 1/2
W2109X	40	1 9/16	W4113X	46	1 13/16	W8206X	60	2 3/8	W15215X	75	2 15/16	W22306X	86	3 3/8	W35090MX	90	—
W2110X	41	1 5/8	W4114X	48	1 7/8	W8207X	62	2 7/16	W15300X	77	3	W22307IX	—	3 7/16	W35309X	91	3 9/16
W2111X	43	1 11/16	W4115X	49	1 15/16	W8208X	63	2 1/2	W15301X	78	3 1/16	W22308X	89	3 1/2	W35310X	92	3 5/8
W2112X	44	1 3/4	W4200X	50	2	W8209X	65	2 9/16	W15302X	80	3 1/8	W22090MX	90	—	W35311X	94	3 11/16
W2113X	46	1 13/16	W4201X	52	2 1/16	W8210X	67	2 5/8	W15303X	81	3 3/16	W22309X	91	3 9/16	W35312X	95	3 3/4
W2114X	48	1 7/8	W4202X	54	2 1/8	W8211X	68	2 11/16	W15304X	83	3 1/4	W22310X	92	3 3/8	W35313X	97	3 13/16
W2115X	49	1 15/16	W4203X	55	2 3/16	W8212X	70	2 3/4	W15305X	84	3 5/16	W22311X	94	3 11/16	W35314X	99	3 7/8
W2200X	50	2	W4204X	57	2 1/4	W8213X	71	2 13/16	W15085MX	85	—	W22312X	95	3 3/4	W35315X	100	3 15/16
W2201X	52	2 1/16	W4205X	59	2 5/16	W8214X	73	2 7/8	W15306X	86	3 3/8	W22313X	97	3 13/16	W35400X	102	4
W2202X	54	2 1/8	W4206X	60	2 3/8	W8215X	75	2 15/16	W15307IX	—	3 7/16	W22314X	99	3 7/8	W35401IX	—	4 1/16
W2203X	55	2 3/16	W4207X	62	2 7/16	W8300X	78	3	W15308X	89	3 1/2	W22315X	100	3 15/16	W35402X	105	4 1/8
W2204X	57	2 1/4	W4208X	63	2 1/2	W8301X	80	3 1/16	W15090MX	90	—	W22400X	102	4	W35403IX	—	4 3/16
W2205X	59	2 5/16	W4209X	65	2 9/16	W8302X	80	3 1/8	W15309X	91	3 9/16	W22401IX	—	4 1/16	W35404X	108	4 1/4
W2206X	60	2 3/8	W4210X	67	2 5/8	W8303X	81	3 3/16	W15310X	92	3 5/8	W22402X	105	4 1/8	W35405X	110	4 5/16
			W4211X	68	2 11/16	W8304X	83	3 1/4	W15311X	94	3 11/16	W22403IX	—	4 3/16	W35406X	111	4 3/8
			W4212X	70	2 3/4	W8305X	84	3 5/16	W15312X	95	3 3/4	W22404X	108	4 1/4	W35407X	113	4 7/16
			W4213X	71	2 13/16	W8085MX	85	—	W15313X	97	3 13/16	W22405X	110	4 5/16	W35408IX	—	4 1/2
			W4214X	73	2 7/8	W8306X	86	3 3/8	W15314X	99	3 7/8	W22406X	111	4 3/8	W35115MX	115	—
			W4215X	75	2 15/16	W8307IX	—	3 7/16	W15315X	100	3 15/16	W22407X	113	4 7/16	W35409IX	—	4 9/16
			W4300X	77	3	W8308X	89	3 1/2	W15400X	102	4	W22408IX	—	4 1/2	W35410IX	—	4 5/8
			W4301X	78	3 1/16	W8090MX	90	—	W15401IX	—	4 1/16	W22115MX	115	—	W35123MX	120	4 3/4
			W4302X	80	3 1/8	W8309X	91	3 9/16	W15402X	105	4 1/8	W22409IX	—	4 9/16	W35412X	123	—
			W4303X	81	3 3/16	W8310X	92	3 5/8	W15403IX	—	4 3/16	W22410IX	—	4 5/8	W35414X	124	4 7/8
			W4304X	83	3 1/4	W8311X	94	3 11/16	W15404X	108	4 1/4	W22412X	120	4 3/4	W35500X	127	5
			W4305X	84	3 5/16	W8312X	95	3 3/4	W15405X	110	4 5/16	W22123MX	123	—	W35502X	130	5 1/8
			W4085MX	85	—	W8313X	97	3 13/16	W15406X	111	4 3/8	W22414X	124	4 7/8	W35503IX	—	5 3/16
			W4306X	86	3 3/8	W8314X	99	3 7/8	W15407X	113	4 7/16	W22500X	127	5	W35504X	—	5 1/4
						W8315X	100	3 15/16	W15408IX	—	4 1/2	W22502X	130	5 1/8	W35506X	135	5 3/8
						W8400X	102	4	W15115MX	115	—	W22503IX	—	5 3/16	W35508X	—	5 1/2
						W8401IX	—	4 1/16	W15409IX	—	4 9/16	W22504X	—	5 1/4	W35509X	—	5 9/16
						W8402X	105	4 1/8	W15410IX	—	4 5/8	W22506X	135	5 3/8	W35510X	—	5 5/8
															W35512X	145	5 3/4
															W35514X	150	5 7/8
															W35600X	151	—
															W35151MX	153	6
															W35602X	155	6 1/8

Accessories for S-Series, X-Edition Wrenches

Short Reaction Arms for use with Allen-Key Drives

Model Number	SRA15X	SRA30X	SRA60X	SRA110X	SRA250X
C1 (mm)	67,5	80,0	91,5	127,5	158,5
H1 (mm)	74,0	74,0	89,0	106,0	135,0

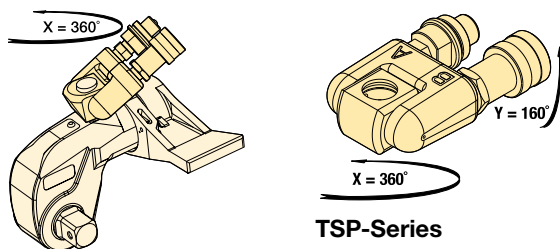



TSP RTEX SRSX Series



TSP-Series, Pro Series Swivel

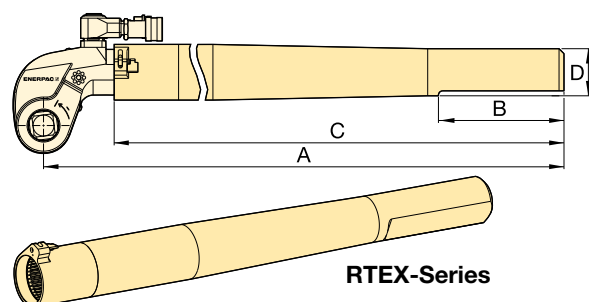
- Robust interlocking design
- 360° X-axis and 160° Y-axis rotation
- Increases tool fit in restricted access areas
- Simplifies hose placement
- Includes male and female couplers




For Torque Wrench Model Number	Model Number ¹⁾	Maximum Pressure (bar)	 (kg)
S1500X, S3000X, S6000X, S11000X, S25000X	TSP300	690	0,2

¹⁾ To order a S-Series (X-edition) torque wrench fitted with a TSP300 tilt and swivel manifold, insert a "P" prior to the "X" in the tool model number, example: **S1500PX**.
TSP300 is designed for X-Edition tools only, and is not compatible with standard edition tools. For replacement components for existing tools, refer to repair sheet on www.enerpac.com

RTEX-Series, Reaction Tube Extensions

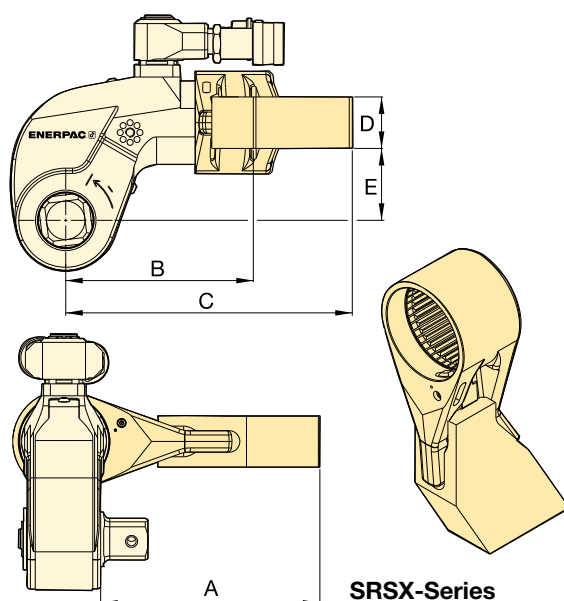


- Full torque rated
- Increases tool fit in restricted access areas


For Torque Wrench Model Number	Model Number	Dimensions (mm)				 (kg) *
		A	B	C	D	
S1500X	RTE15X	706	152	636	58	4,6
S3000X	RTE30X	733	152	647	57	5,5
S6000X	RTE60X	747	152	659	65	7,7
S11000X	RTE110X	769	152	675	76	11,2
S25000X	RTE250X	813	152	685	100	17,3

*Weights indicated are for the accessories only and do not include the wrench.

SRSX-Series, Extended Reaction Arms

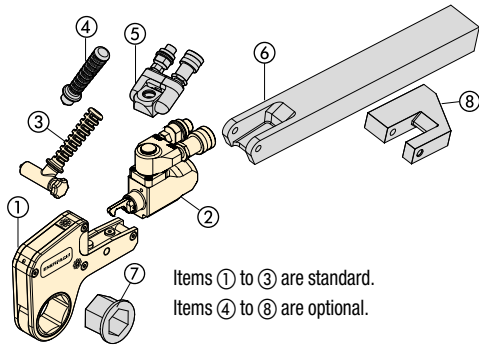


- Lightweight interchangeable design

For Wrench Model	Max. Torque (Nm)	Model Number	Dimensions (mm)					 (kg) *
			A	B	C	D	E	
S1500X	1801	SRS151X	94	86	127	24	34	0,8
	1641	SRS152X	119	97	138	24	34	1,0
	1533	SRS153X	145	109	148	24	34	1,2
S3000X	3918	SRS301X	111	106	168	34	48	1,6
	3712	SRS302X	137	117	182	34	48	2,0
	3574	SRS303X	162	132	198	34	48	2,5
S6000X	7842	SRS601X	138	128	192	39	62	2,3
	7454	SRS602X	163	144	207	39	62	2,7
	7175	SRS603X	189	159	222	39	62	3,4
S11000X	14.650	SRS1101X	149	157	232	46	76	4,4
	13.957	SRS1102X	175	172	247	46	76	5,1
	13.391	SRS1103X	200	187	261	46	76	5,8
S25000X	33.538	SRS2501X	183	209	295	50	100	7,6
	32.049	SRS2502X	208	222	310	50	100	8,4
	30.750	SRS2503X	233	236	326	50	100	10,0

*Weights indicated are for the accessories only and do not include the wrench.

Accessories for W-Series, X-Edition Wrenches



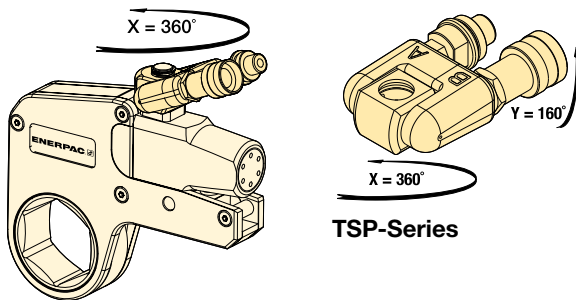
- ① Hexagon Cassette
- ② Drive Unit
- ③ Angled Positioning Handle
- ④ Straight Positioning Handle
- ⑤ Pro Series Swivel
- ⑥ Extended Reaction Arm
- ⑦ Reducer Insert
- ⑧ Reaction Paddle

Items ① to ③ are standard.
Items ④ to ⑧ are optional.


TSP WTE WRP Series



TSP-Series, Pro Series Swivel

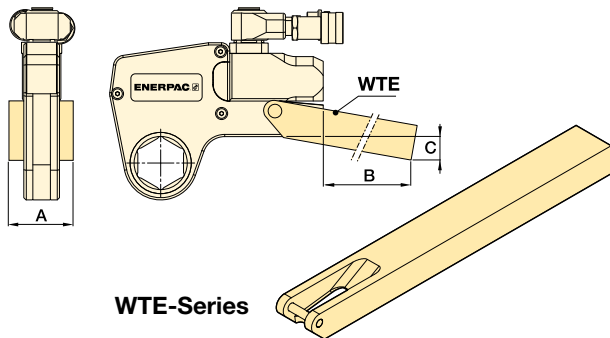


- Robust interlocking design
- 360° X-axis and 160° Y-axis rotation
- Increases tool fit in restricted access areas
- Simplifies hose placement
- Includes male and female couplers


For Torque Wrench Model Number	Model Number ¹⁾	Maximum Pressure (bar)	 (kg)
W2000X, W4000X, W8000X, W15000X, W22000X, W35000X	TSP300	690	0,2

¹⁾ To order a W-Series (X-edition) drive unit fitted with a TSP300 tilt and swivel manifold, insert a "P" prior to the "X" in the tool model number, example: **W2000PX**.
TSP300 is designed for X-Edition tools only, and is not compatible with standard edition tools.
For replacement components for existing tools, refer to repair sheet on www.enerpac.com

WTE-Series, Extended Reaction Arm

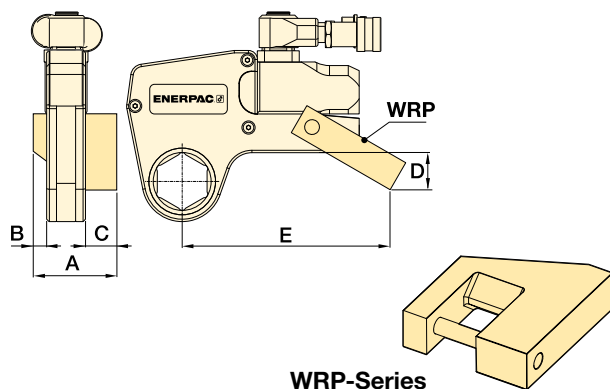


- Full torque rated
- Increases tool fit in restricted access areas.


For Torque Wrench Model Number	Model Number	Dimensions (mm)			 (kg) *
		A	B	C	
W2000X	WTE20	56	398	76	2,6
W4000X	WTE40	66	436	74	4,6
W8000X	WTE80	85	449	55	7,6
W15000X	WTE150	102	498	72	12,0
W22000X	WTE220	114	524	77	17,3
W35000X	WTE350	127	419	133	17,8

*Weights indicated are for the accessories only and do not include the wrench.

WRP-Series, Low Profile Reaction Paddles



- Lightweight interchangeable design
- Allows for offset reaction when in-line reaction is not available.

For Torque Wrench Model Nr.	Model Number	Dimensions (mm)					 (kg) *
		A	B	C	D	E	
W2000X	WRP20	84	16	35	45	148	0,4
W4000X	WRP40	109	21	47	59	190	0,8
W8000X	WRP80	137	26	57	69	223	2,0
W15000X	WRP150	165	32	69	87	257	3,9
W22000X	WRP220	207	37	91	134	317	7,2
W35000X	WRP350	225	42	91	182	367	10,6

*Weights indicated are for the accessories only and do not include the wrench.

S and W-Series, X-Edition Torque Wrenches



The Industrial Tools Line

Cylinders and Lifting Products

- General Purpose
- Aluminium Lightweight
- Pancake
- Flat-Jac®, Low Height
- Pull
- Hollow Plunger
- Precision
- Long Stroke
- High Tonnage
- POWR'RISER® Lifting Jacks
- Jacks
- Cylinder-Pump Sets

Pumps

- Manual
- Cordless & Electric Driven
- Compressed Air Driven
- Petrol Driven

System Components

- Hoses, Couplers, Oil
- Gauges, Adaptors
- Manifolds, Fittings

Valves

- 3-and 4-Way Directional
- Pressure and Flow Control

Presses

- Bench, Workshop, Roll Frame
- Arbor and C-Clamps
- Tension Meters, Load Cells

Pullers

- Master Pullers Sets
- Multi Purpose Puller Sets
- Posi Lock® Pullers

Tools

- Maintenance Sets
- Punches
- Machine Lifts
- Lifting Wedge
- Load Skates
- Cutters
- Pipe Benders
- Wedgie, Spreaders

Bolting Tools

- Multipliers
- Torque Wrenches
- Impact Sockets
- Bolt Tensioners
- Wrench and Tensioner Pumps
- Flange Alignment Tools
- Flange Facing Tool
- Nut Splitters

Enerpac Bolting Service Van

Enerpac Worldwide Locations

For a complete list of addresses see:
www.enerpac.com/en/contact-us

Enerpac Bolting Van

The Enerpac Bolting Service offers full bolting tool service and maintenance wherever you need it.

- Demonstrate Enerpac Bolting Tools on your premises.
- Repair and calibrate all Bolting Tool brands.
- Training for the safe and efficient use of Bolting Tools.



Enerpac Academy

Enerpac Academy is our in-house training centre, set up exclusively for Enerpac business partners, Enerpac users and Enerpac employees: training programs ranging from tool expertise, repairs and maintenance, to safe operation of high-pressure hydraulic tools.

- Specialist in-house Enerpac training center
- Standard and tailored training programs
- Highly experienced trainers
- Selection of training courses with a proven (value adding) track record
- Knowledge and experience sharing
- User and tool safety come first.

EMP – Enerpac Maintenance Program

EMP is a preventive maintenance program. Your Enerpac Authorised Service Centre will check the tools on essential points: leaking, oil level and quality, maximum pressure setting, and damage. EMP reduces operational risks, increases safety and minimises extremely expensive delays in your operations. You will be advised about regular maintenance of the Enerpac tools.

- Work more safely
- Minimise operational risk
- Ensure tools are always available and in tip-top shape
- As good as new after repair
- Prevent downtime
- Advice on safe and effective use
- Maintenance when tools are not used.

www.enerpac.com

- Online Bolting Calculator
- Learn more about hydraulics
- Promotions
- New products
- Electronic Catalogues
- Trade Shows
- Manuals (instruction and repair sheets)
- Nearest Distributors & Service Centers
- Enerpac products in action
- Integrated Solutions.

Ordering Products and Catalogues

To find the name of the closest Enerpac distributor or service center, to request literature or technical application assistance, contact Enerpac at one of the addresses on www.enerpac.com or pose your question through E-mail: info@enerpac.com

Your Enerpac Distributor: