



## Super Yacht Leasing – Platinum Membership

More personalised than chartering, more cost effective than full ownership



16 Yachts between 65 to 95 metres, plus 8 support vessels, gives you and your family world wide access to a fleet of custom Italian designed, stylish Super Yachts, and when they are finished, their replacements will be started, so you will always be on a new yacht.

Leases can be offset against company profits

'Consortium Leases' can be acceptable between companies or families

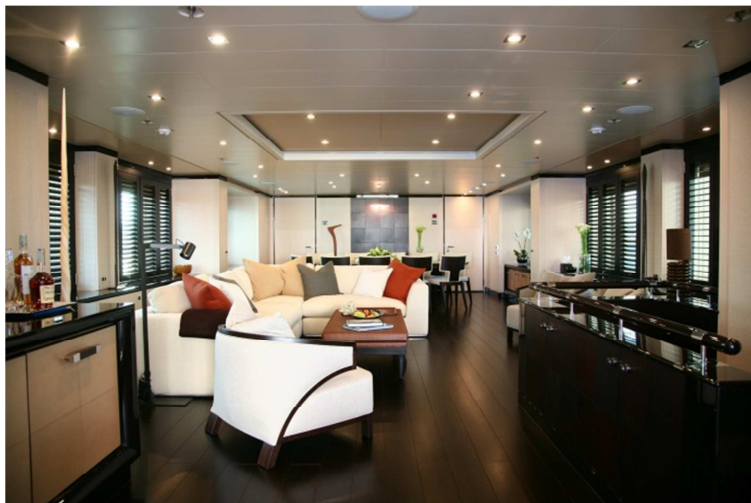
Platinum membership benefits are:

- Guaranteed repayment of the lease price once all builds are complete, plus a bonus
- 1st come 1st serve priority access to the cruising areas and dates
- Introductory Lease Price for phase one, the 65 and 85 metre Yachts
- Being part of the design process of the Yachts, usually the privilege of custom yacht owners
- Sit on the committee and enjoy Super Yacht Lifestyle without the cost that goes with it
- First refusal on the 75 and 95 metre yachts so you are always on the newest and biggest



### Advantages of leasing a Yacht

- **Professional teams will manage** the Yachts for you, including crew, maintenance and refits
- **8 Super Yachts and 4 support vessels for 2025** means immediate choice of cruising grounds
- **Designer will work with your family** so you can personalise your own interior experience
- **Mix and match** between yachts sizes. 65 and 85 metre, then **by 2029, the 75 and 95 metre**
- 65 metre Yachts for family holidays (12 Guests)
- 85 metre Yachts for (13-36 Guests) for corporate events or larger families
- **Discreet use, privacy and confidentiality is assured**
- **Guaranteed access** to new stylish Yachts, plus a 2<sup>nd</sup> generation replacement program
- **Referral payment structure** for introducing new leaseholders to the program







A '**LIMITED NUMBER**' of Platinum Leases are available in the program

- Dates for **choice of cruising grounds strictly in order** that leases are signed up
- Platinum Member's **bonus is increased** if they upgrade to the 75 and 95m Yachts
- Subject to letter of intent being signed
- Deposit to be paid (Payment in Sterling and **BBX accepted** subject to agreed split)
- Once full allocation of Platinum leases are sold, next allocation will be Silver Leases
- Silver membership will enjoy all the 'Advantages of Leasing a Yacht' but without some of the Platinum Membership privileges and benefits
- **Finance for Leases** may be available subject to status.
- **Lease Payment due once design process is completed**, which will be 9 months to 1 year
- Once delivered, annual service charges for fixed costs (crew/maintenance) and variable costs (fuel/entertainment etc.) will be applied

## Regent Yachts World Fleet

### April to August

- Arctic

### May to October

- West and East Med
- North America
- Northern Europe
- South Pacific
- Australia
- New Zealand

### November to April

- South America
- South East Asia
- Seychelles
- Maldives

### October to April

- Antarctic



## Profile

Project Director, Andrew Williamson, graduated in Yacht Manufacturing Management at Solent University, UK and has been accepted as member of the Association of Project Managers. He has worked with some of the largest Super Yacht builders in Europe, and across the world, and headed a team of reputable engineers, lawyers, designers, naval architects and other contractors.

Contact : Andrew Williamson Ymm. Mapm.

Website : [www.regentyachts.co.uk](http://www.regentyachts.co.uk)

Skype : regentyachts

e-mail : [andrew@regentyachts.co.uk](mailto:andrew@regentyachts.co.uk)

Phone : 0044 (0) 7968 214299

