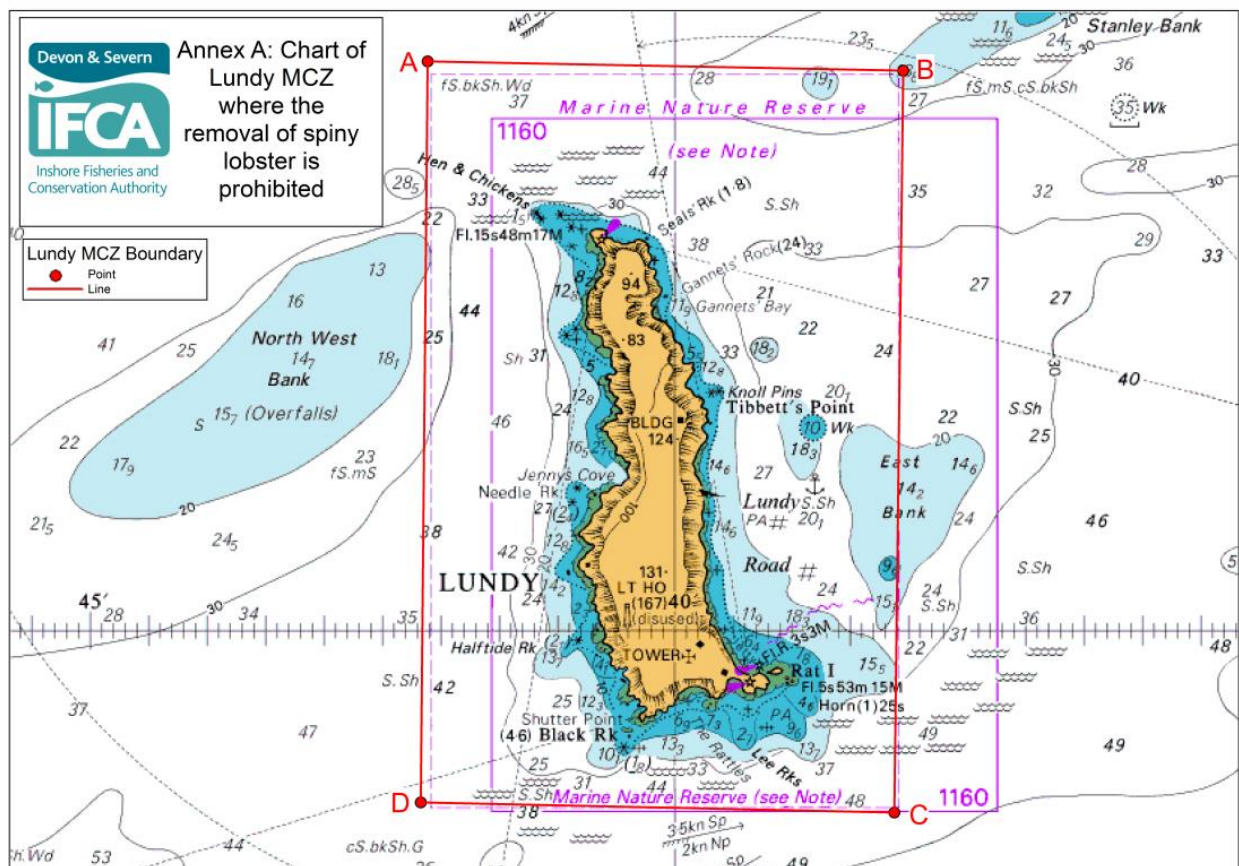


Annex A: Lundy MCZ

Area where the removal of spiny lobster (*Palinurus elephas*) is prohibited.

Point number	Latitude	Longitude
A	51° 13.022' N	004° 42.114' W
B	51° 12.972' N	004° 38.047' W
C	51° 08.986' N	004° 38.123' W
D	51° 09.040' N	004° 42.172' W

Annex A - Chart of Lundy MCZ Area closed to the Removal of Spiny Lobster

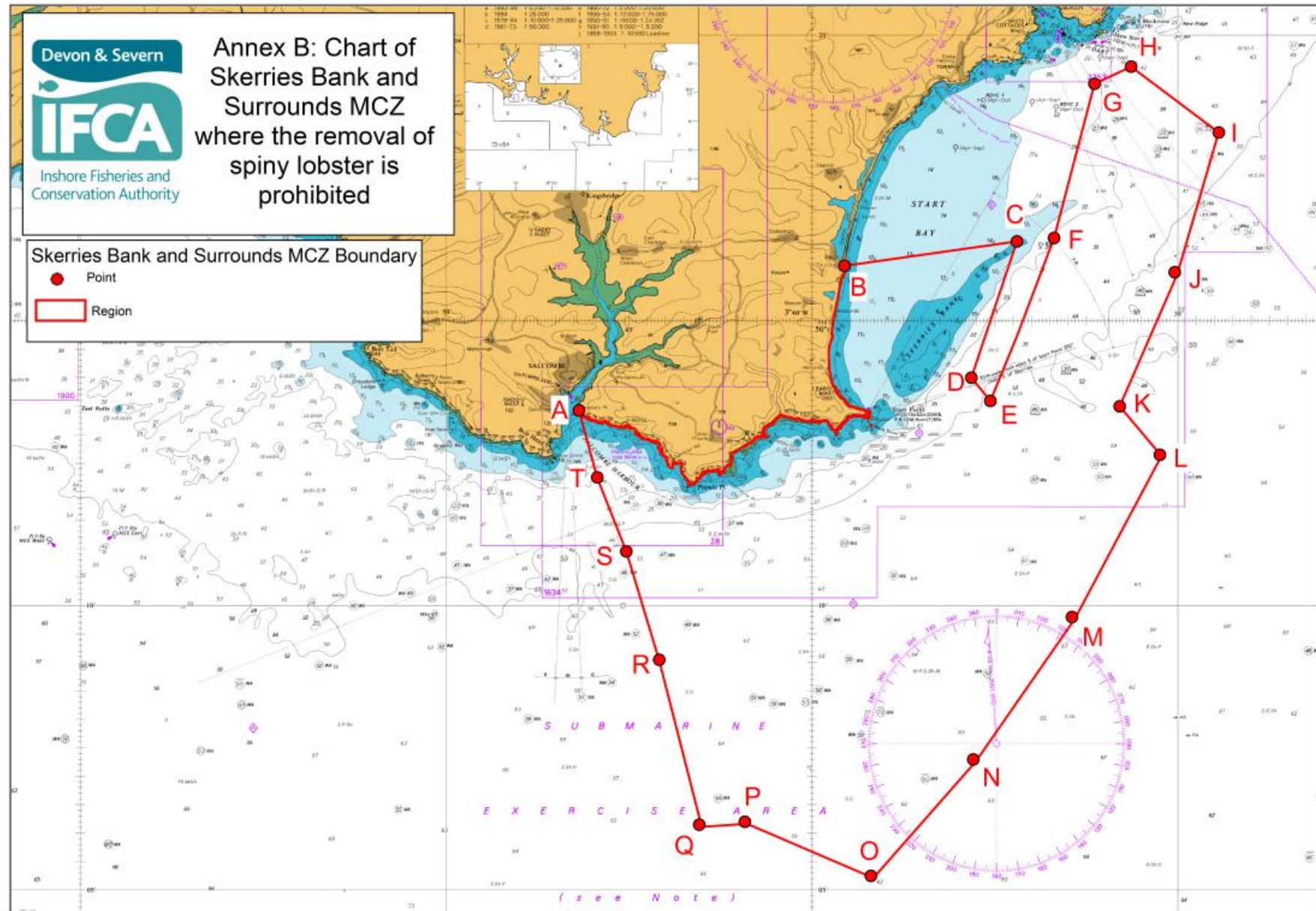


Annex B: Skerries Bank and Surrounds MCZ

Area where the removal of spiny lobster (*Palinurus elephas*) is prohibited, the landward boundary between A and B follows Mean High Water.

Point number	Latitude	Longitude
A	50° 13.418' N	003° 46.374' W
B	50° 15.954' N	003° 39.113' W
C	50° 16.380' N	003° 34.400' W
D	50° 13.993' N	003° 35.645' W
E	50° 13.585' N	003° 35.124' W
F	50° 16.441' N	003° 33.382' W
G	50° 19.140' N	003° 32.278' W
H	50° 19.440' N	003° 31.278' W
I	50° 18.290' N	003° 28.882' W
J	50° 15.839' N	003° 30.085' W
K	50° 13.489' N	003° 31.588' W
L	50° 12.639' N	003° 30.490' W
M	50° 09.789' N	003° 32.892' W
N	50° 07.289' N	003° 35.594' W
O	50° 05.239' N	003° 38.394' W
P	50° 06.190' N	003° 41.839' W
Q	50° 06.141' N	003° 43.089' W
R	50° 09.041' N	003° 44.183' W
S	50° 10.942' N	003° 45.079' W
T	50° 12.243' N	003° 45.876' W

Annex B – Chart of Skerries Bank & Surrounds MCZ Area closed to the Removal of Spiny Lobster

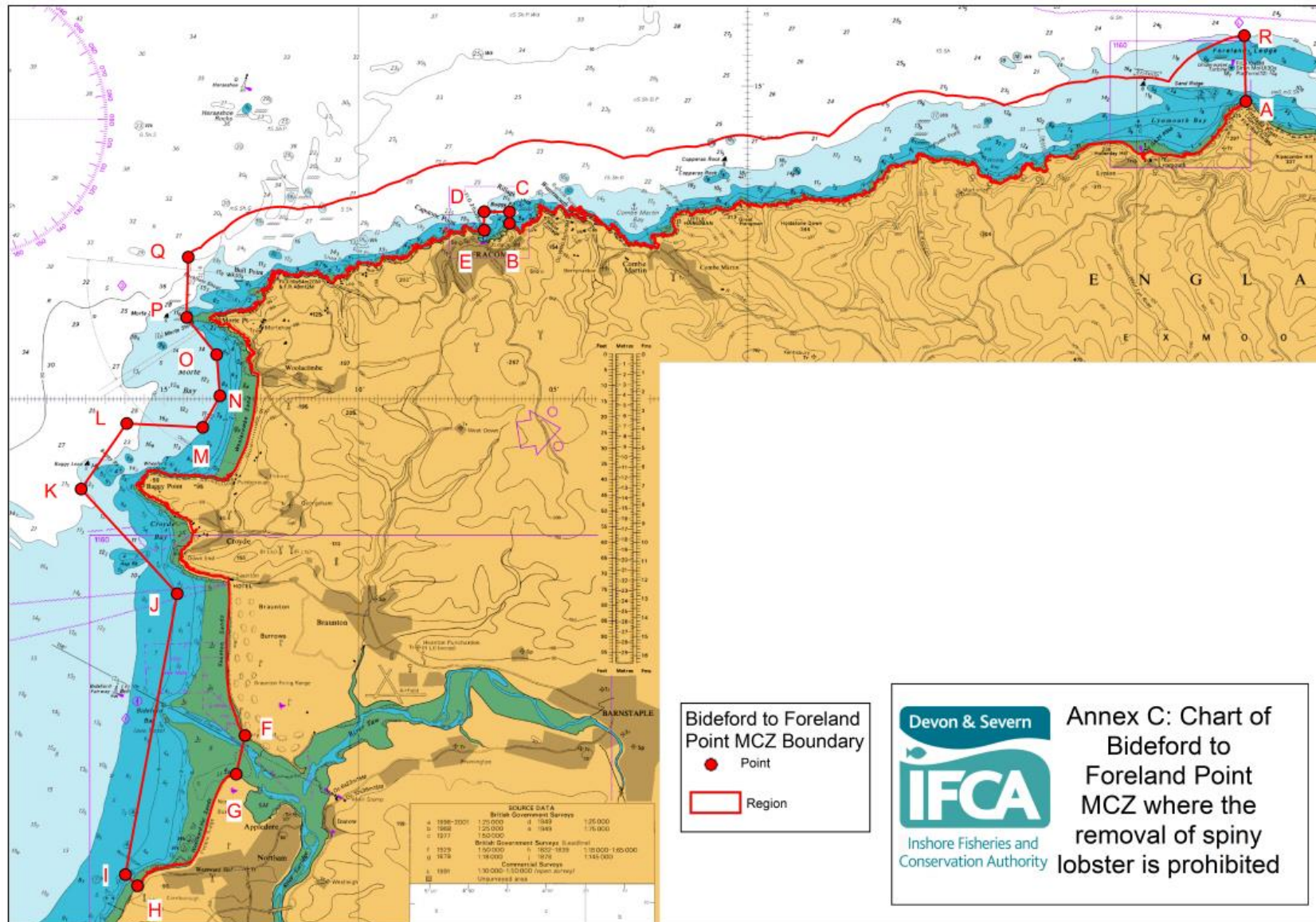


Annex C: Bideford to Foreland Point MCZ

Area where the removal of spiny lobster (*Palinurus elephas*) is prohibited. The landward boundary between points A and B, E and F, G and H, follows Ordnance Survey MasterMap Mean High Water and is therefore liable to change. Between point Q and point R the seaward boundary is 1 nautical mile seaward of Ordnance Survey Mastermap.

Point number	Latitude	Longitude
A	51° 14.764' N	003° 47.203' W
B	51° 12.792' N	004° 06.128' W
C	51° 12.980' N	004° 06.125' W
D	51° 12.983' N	004° 06.777' W
E	51° 12.683' N	004° 06.777' W
F	51° 04.525' N	004° 12.923' W
G	51° 03.902' N	004° 13.150' W
H	51° 02.098' N	004° 15.684' W
I	51° 02.281' N	004° 15.999' W
J	51° 06.816' N	004° 14.666' W
K	51° 08.505' N	004° 17.134' W
L	51° 09.563' N	004° 15.965' W
M	51° 09.500' N	004° 14.013' W
N	51° 10.011' N	004° 13.569' W
O	51° 10.677' N	004° 13.653' W
P	51° 11.274' N	004° 14.425' W
Q	51° 12.250' N	004° 14.384' W
R	51° 15.825' N	003° 47.243' W

Annex C – Chart of Bideford to Foreland Point MCZ Area closed to the Removal of Spiny Lobster



Devon & Severn

IFCA

Inshore Fisheries and Conservation Authority

Annex C: Chart of Bideford to Foreland Point MCZ where the removal of spiny lobster is prohibited