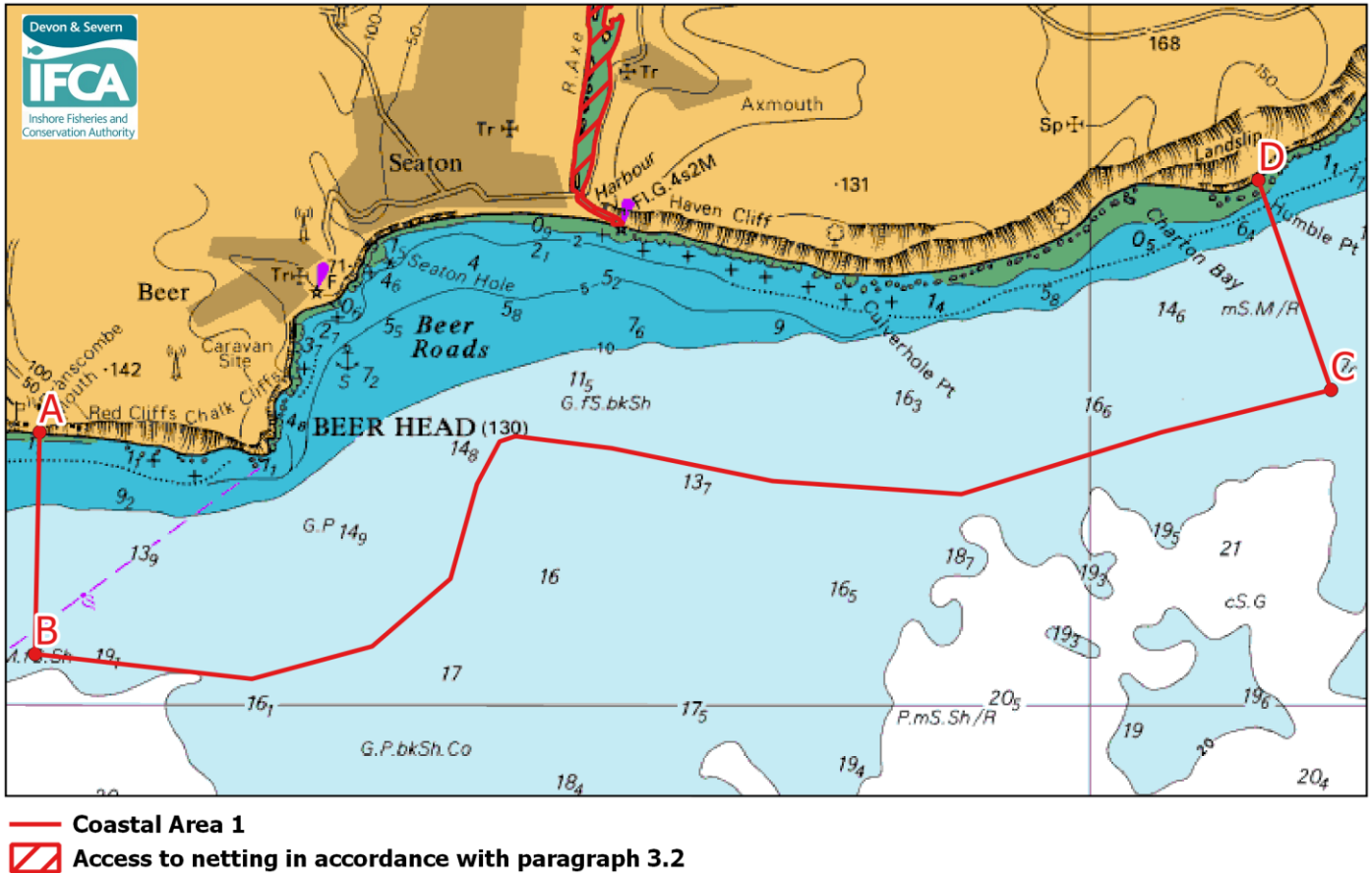


Annex 3 Chart of Coastal Area 1 - No access for the use of nets other than in accordance with paragraph 3.4 of the Netting Permit Conditions

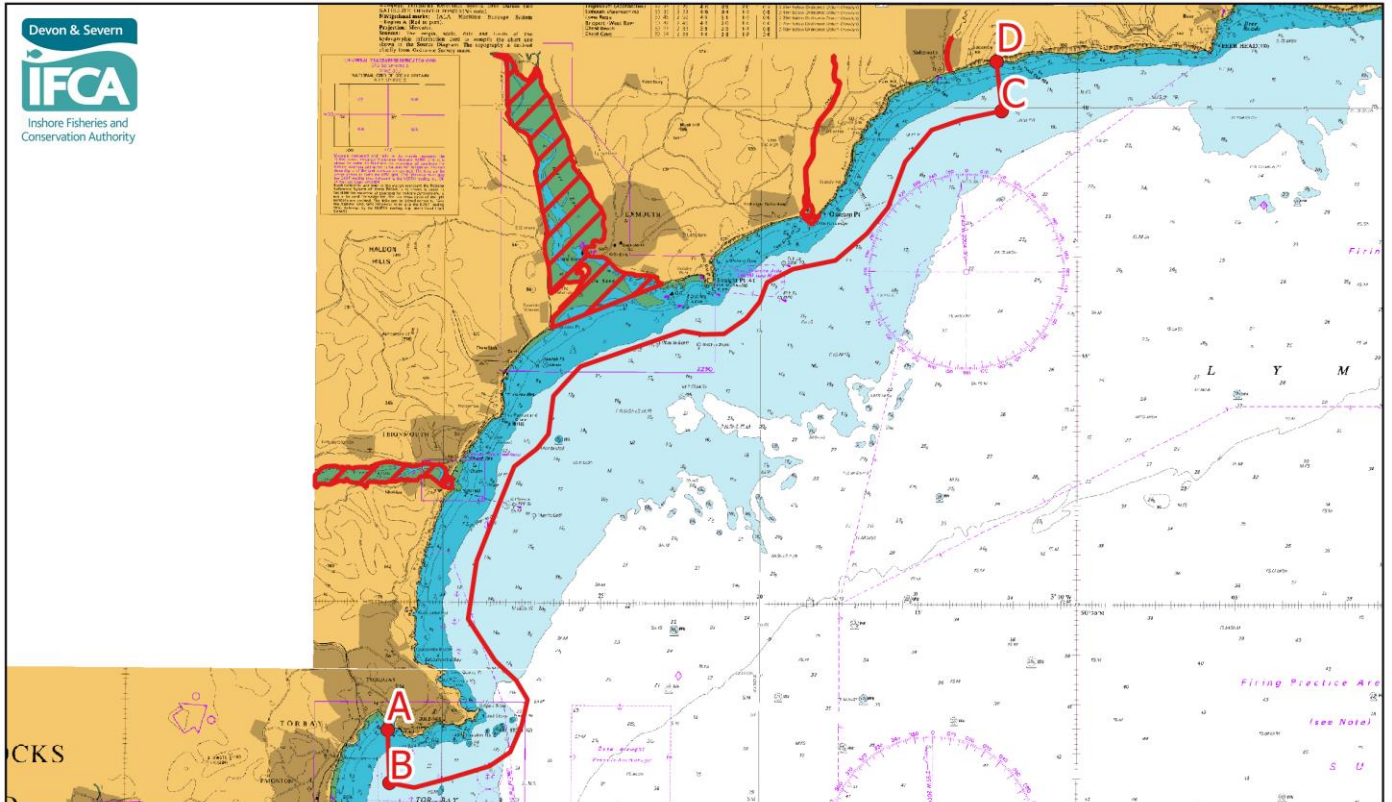


Coastal Area 1 latitude and longitude positions:

Point	Latitude	Longitude
A (Branscombe Mouth)	50° 41.205'N	003° 07.374'W
B	50° 40.218'N	003° 07.401'W
C	50° 41.398'N	002° 58.306'W
D (Humble Point)	50° 42.337'N	002° 58.817'W

Between points B and C the seaward boundary is 1 nautical mile seaward of the shore as defined by the lowest astronomical tide

Annex 3 Chart of Coastal Area 2 - No access for the use of nets other than in accordance with paragraph 3.4 of the Netting Permit Conditions



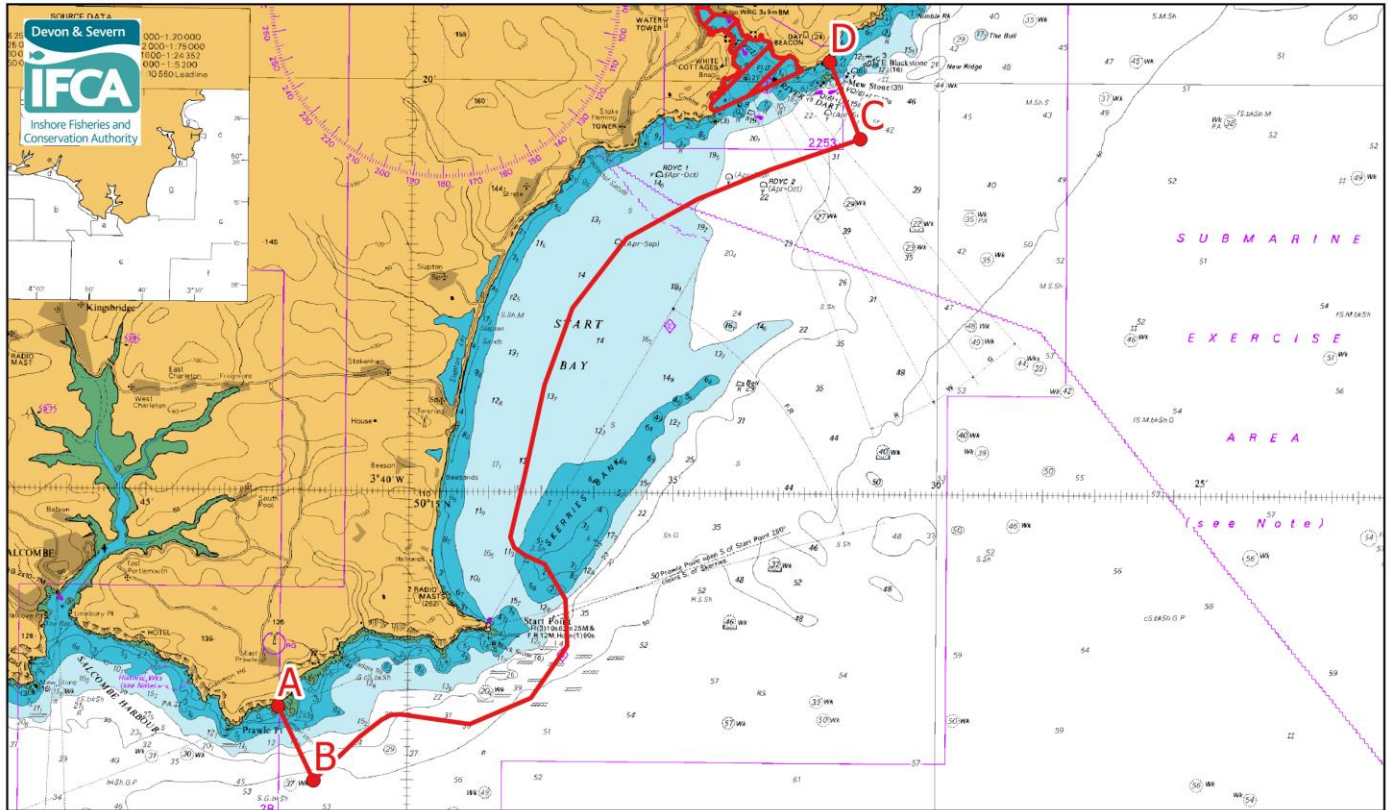
- Coastal Area 2
- ▨ Access to netting in accordance with paragraph 3.2

Coastal Area 2 latitude and longitude positions:

Point	Latitude	Longitude
A (Torquay Harbour)	50° 27.413'N	003° 31.719'W
B	50° 26.347'N	003° 31.649'W
C	50° 39.925'N	003° 12.399'W
D (Salcombe Mouth)	50° 40.920'N	003° 12.571'W

Between points B and C the seaward boundary is 1 nautical mile seaward of the shore as defined by the lowest astronomical tide

Annex 3 Chart of Coastal Area 3 - No access for the use of nets other than in accordance with paragraph 3.4 of the Netting Permit Conditions



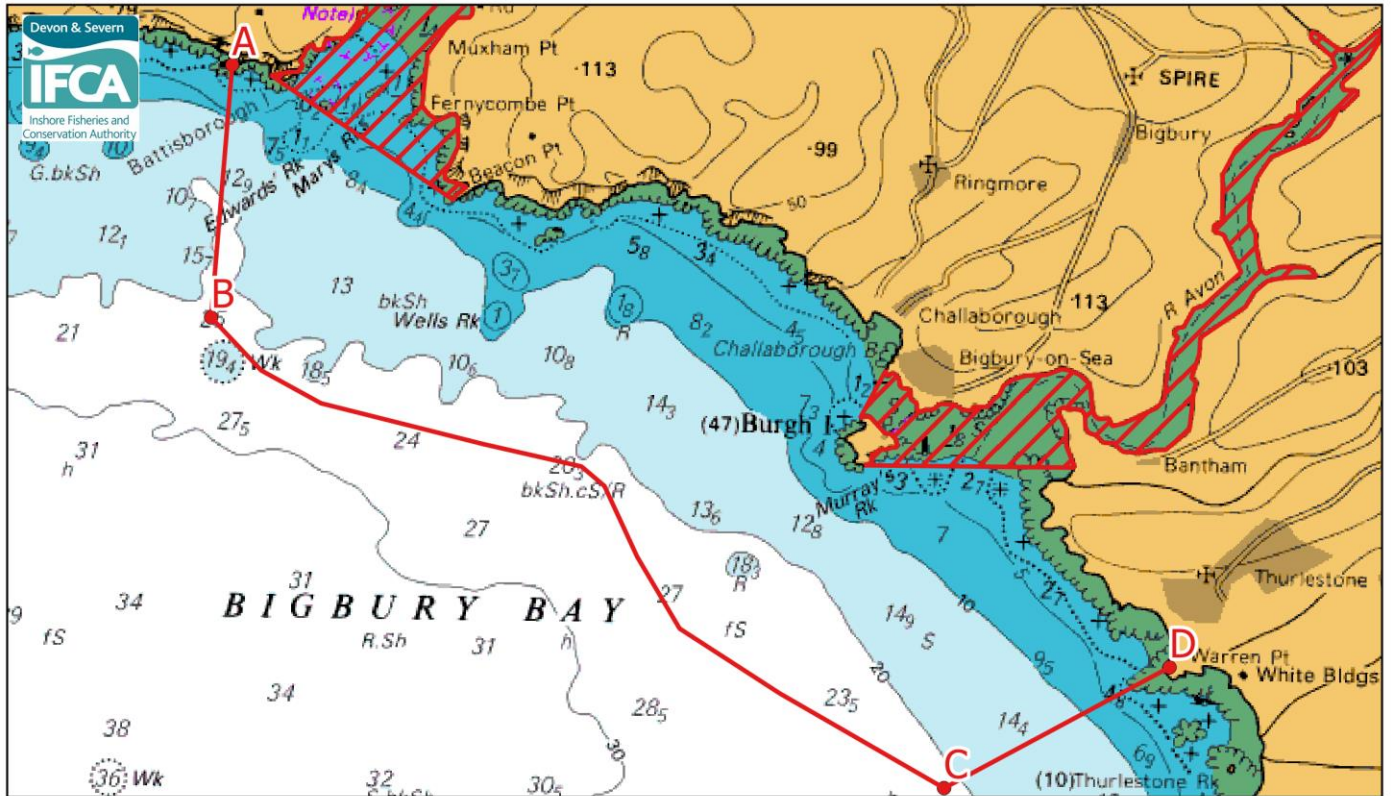
- Coastal Area 3
- Access to netting in accordance with paragraph 3.2

Coastal Area 3 latitude and longitude positions:

Point	Latitude	Longitude
A (Langerstone Point)	50° 12.363'N	003° 42.455'W
B	50° 11.464'N	003° 41.769'W
C	50° 19.307'N	003° 31.491'W
D (Mew Stone, east of Dartmouth)	50° 20.242'N	003° 32.082'W

Between points B and C the seaward boundary is 1 nautical mile seaward of the shore as defined by the lowest astronomical tide

Annex 3 Chart of Coastal Area 4 - No access for the use of nets other than in accordance with paragraph 3.4 of the Netting Permit Conditions



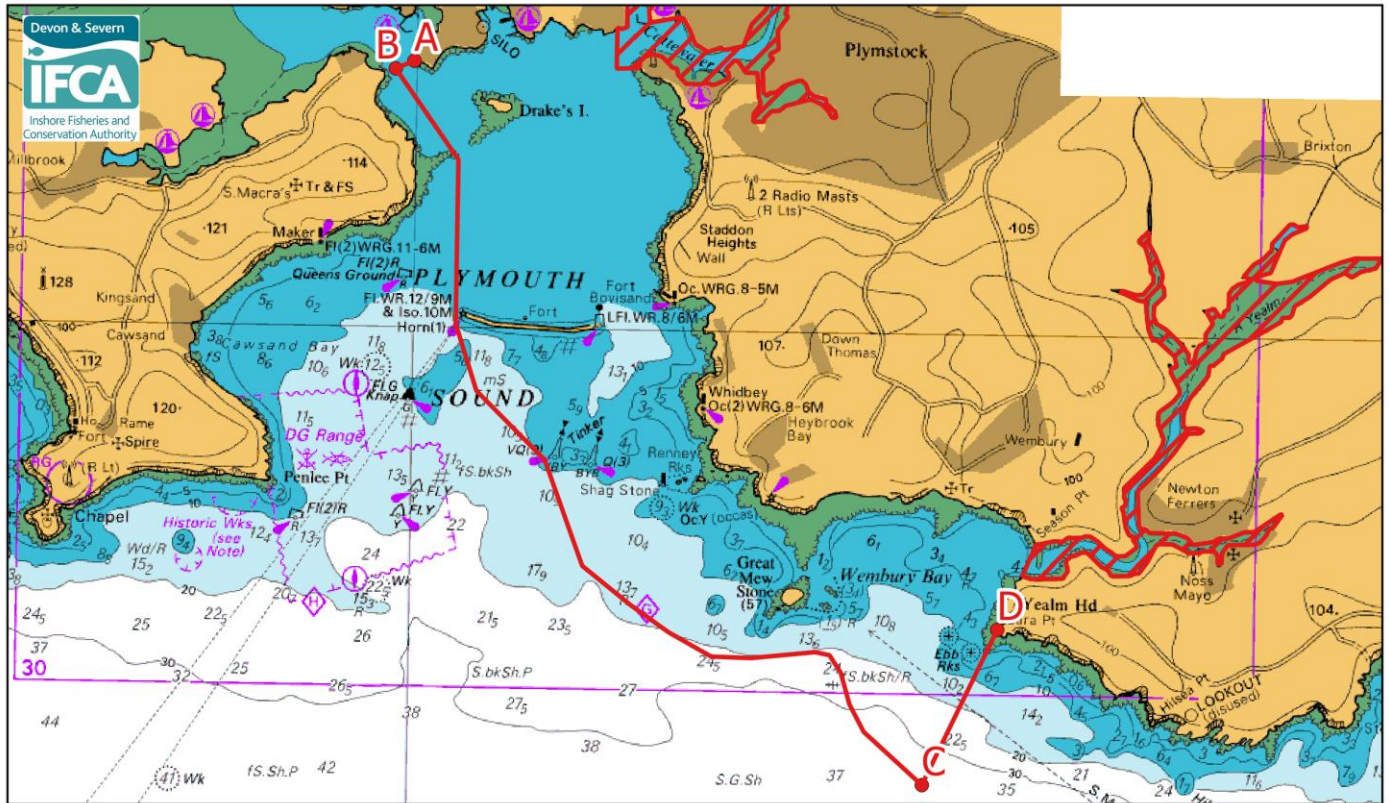
- Coastal Area 4
- ▨ Access to netting in accordance with paragraph 3.2

Coastal Area 4 latitude and longitude positions:

Point	Latitude	Longitude
A (St Anchorites Rock)	50° 18.289'N	003° 58.077'W
B	50° 17.257'N	003° 58.195'W
C	50° 15.370'N	003° 53.483'W
D (Warren Point)	50° 15.878'N	003° 52.055'W

Between points B and C the seaward boundary is 1 nautical mile seaward of the shore as defined by the lowest astronomical tide

Annex 3 Chart of Coastal Area 5 - No access for the use of nets other than in accordance with paragraph 3.4 of the Netting Permit Conditions



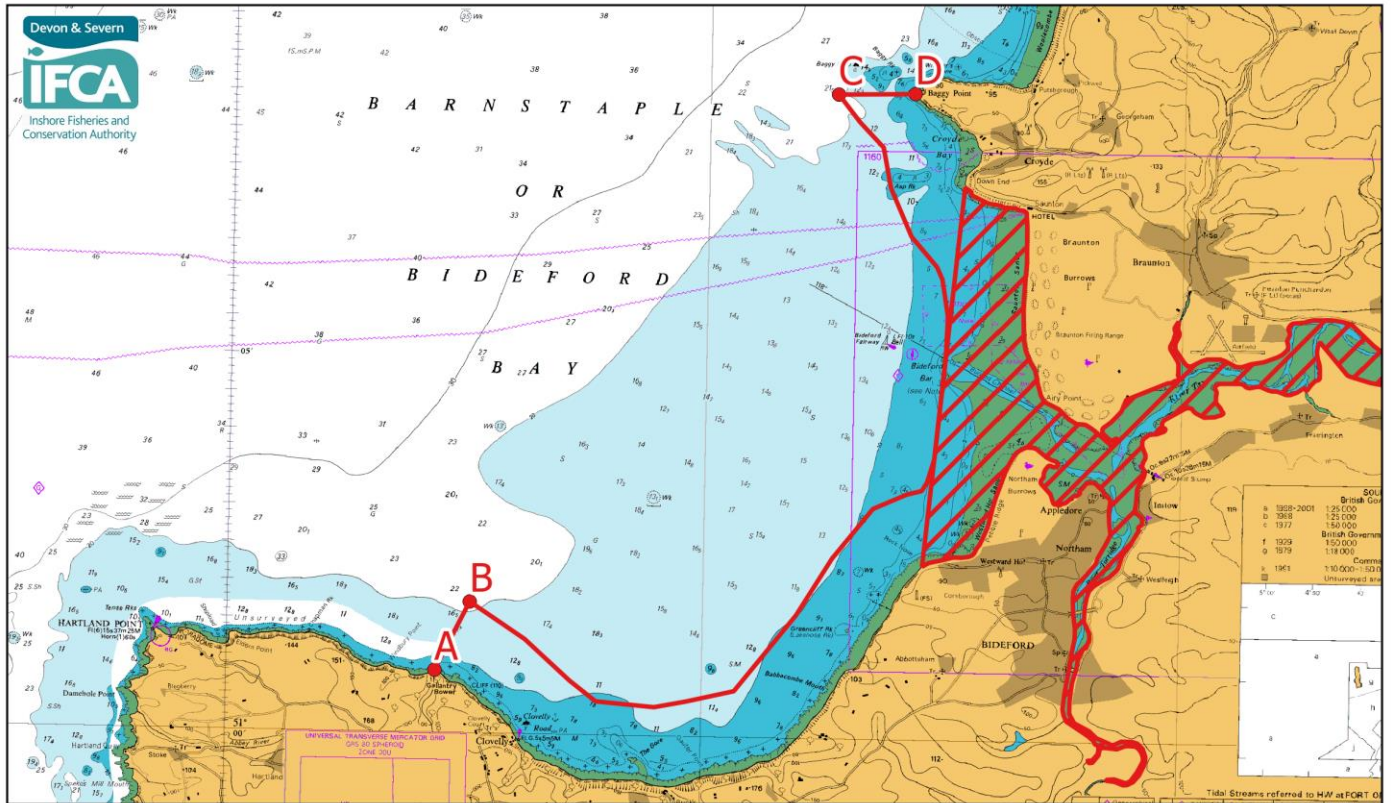
- Coastal Area 5
- Access to netting in accordance with paragraph 3.2

Coastal Area 5 latitude and longitude positions:

Point	Latitude	Longitude
A (Devils Point)	50° 21.592'N	004° 10.026'W
B	50° 21.542'N	004° 10.200'W
C	50° 17.300'N	004° 05.176'W
D (Yealm Head)	50° 18.233'N	004° 04.494'W

Between points B and C the seaward boundary is 1 nautical mile seaward of the shore as defined by the lowest astronomical tide within the Devon and Severn Inshore Fisheries and Conservation Authority district

Annex 3 Chart of Coastal Area 6 - No access for the use of nets other than in accordance with paragraph 3.4 of the Netting Permit Conditions



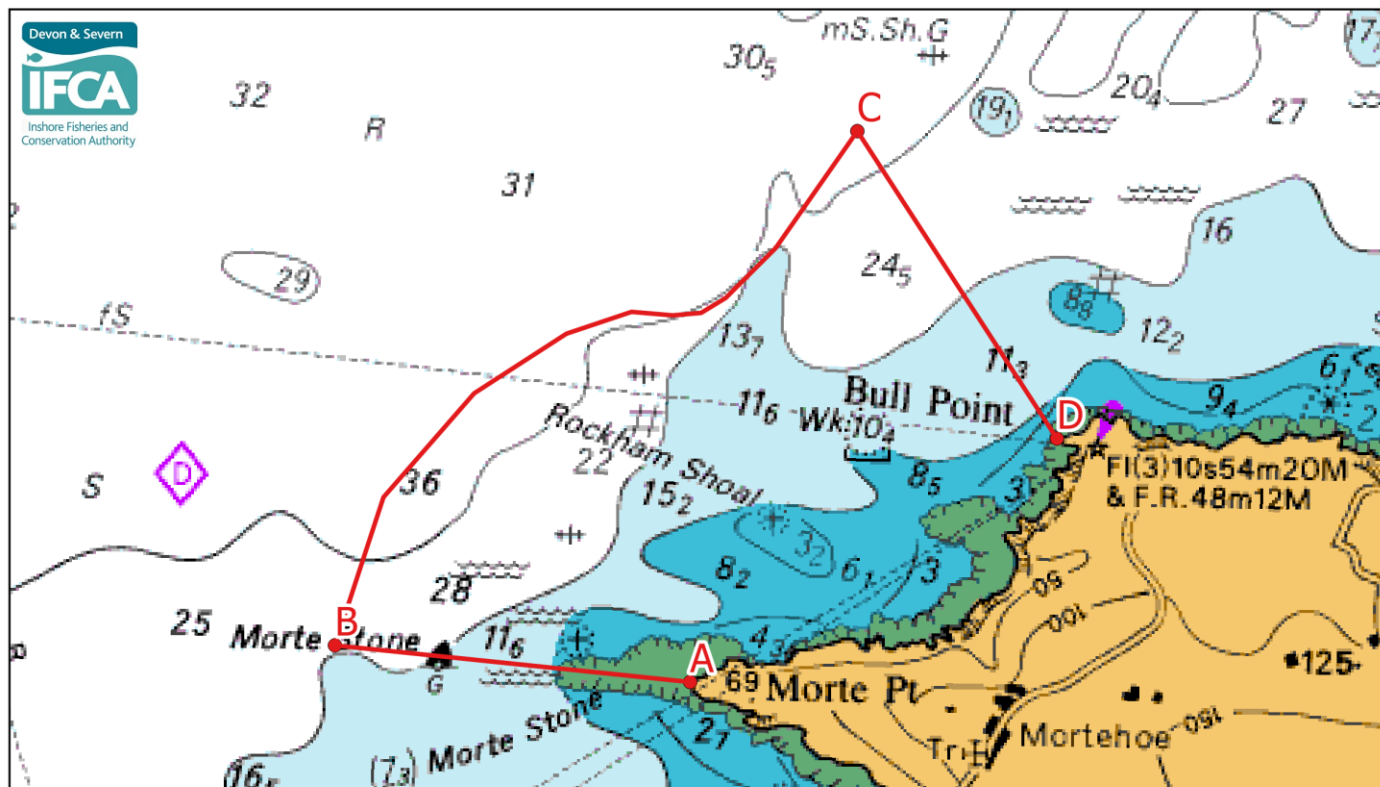
- Coastal Area 6
- ▨ Access to netting in accordance with paragraph 3.2

Coastal Area 6 latitude and longitude positions:

Point	Latitude	Longitude
A (Blackchurch Rock)	51° 00.813'N	004° 25.616'W
B	51° 01.727'N	004° 24.899'W
C	51° 08.540'N	004° 17.313'W
D (Baggy Point)	51° 08.564'N	004° 15.702'W

Between points B and C the seaward boundary is 1 nautical mile seaward of the shore as defined by the lowest astronomical tide

Annex 3 Chart of Coastal Area 7 - No access for the use of nets other than in accordance with paragraph 3.4 of the Netting Permit Conditions



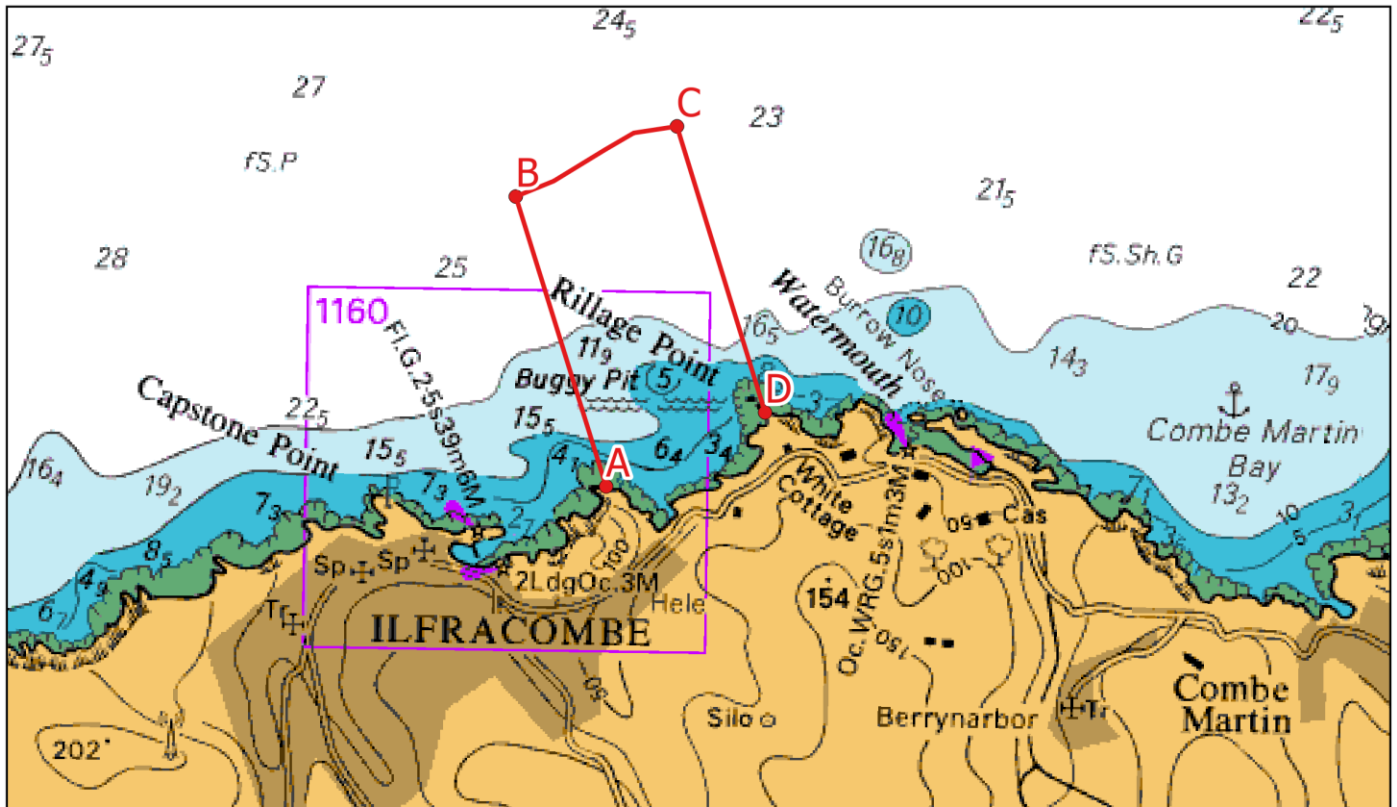
— Coastal Area 7

Coastal Area 7 latitude and longitude positions:

Point	Latitude	Longitude
A (Morte Point)	51° 11.271'N	004° 13.833'W
B	51° 11.355'N	004° 15.387'W
C	51° 12.790'N	004° 13.148'W
D (Bull Point)	51° 11.959'N	004° 12.250'W

Between points B and C the seaward boundary is 1 nautical mile seaward of the shore as defined by the lowest astronomical tide

Annex 3 Chart of Coastal Area 8 - No access for the use of nets other than in accordance with paragraph 3.4 of the Netting Permit Conditions



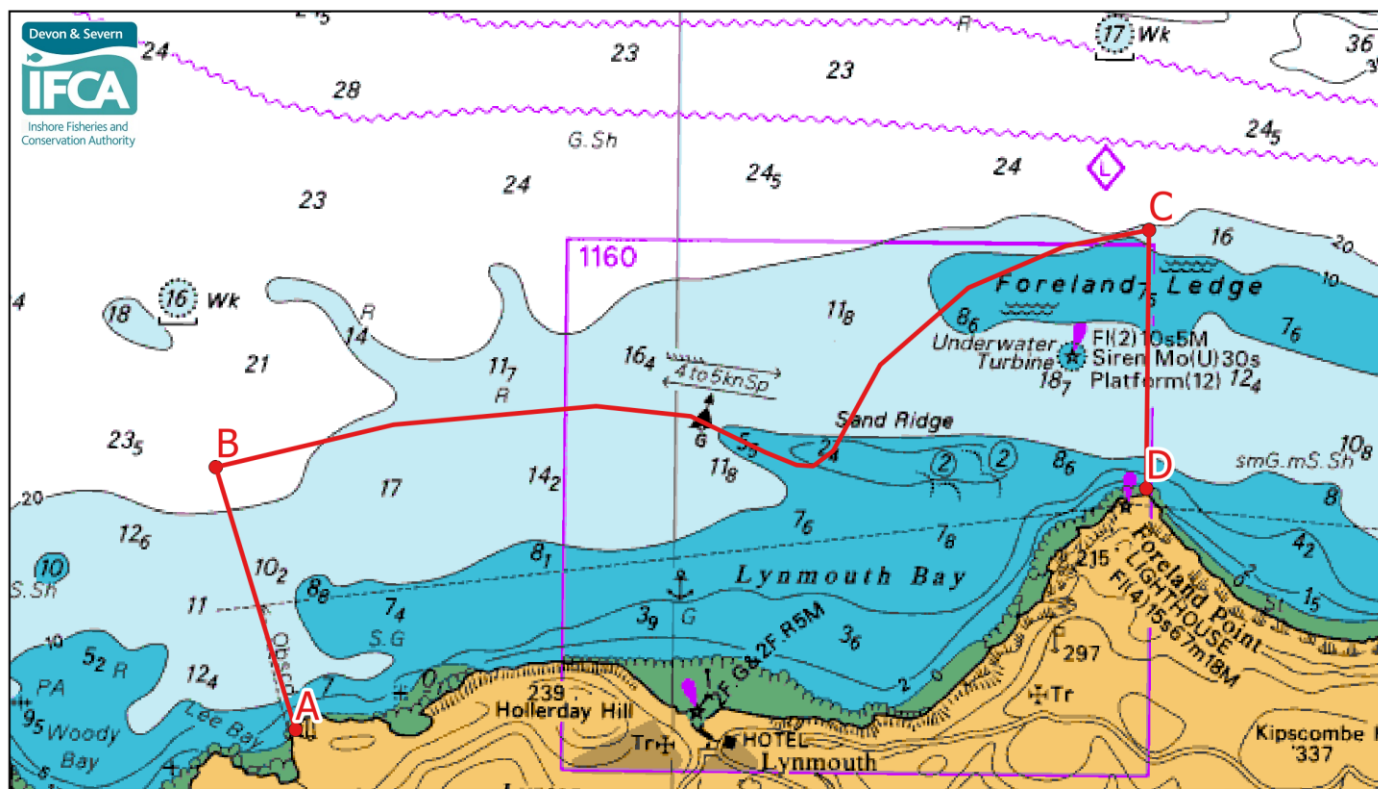
— Coastal Area 8

Coastal Area 8 latitude and longitude positions:

Point	Latitude	Longitude
A (Beacon Point)	51° 12.791'N	004° 06.134'W
B	51° 13.720'N	004° 06.618'W
C	51° 13.956'N	004° 05.796'W
D (Rillage Point)	51° 13.038'N	004° 05.323'W

Between points B and C the seaward boundary is 1 nautical mile seaward of the shore as defined by the lowest astronomical tide

Annex 3 Chart of Coastal Area 9 - No access for the use of nets other than in accordance with paragraph 3.4 of the Netting Permit Conditions



— Coastal Area 9

Coastal Area 9 latitude and longitude positions:

Point	Latitude	Longitude
A (Duty Point)	51° 13.819'N	003° 52.319'W
B	51° 14.823'N	003° 52.837'W
C	51° 15.777'N	003° 47.104'W
D (Foreland Point)	51° 14.783'N	003° 47.104'W

Between points B and C the seaward boundary is 1 nautical mile seaward of the shore as defined by the lowest astronomical tide