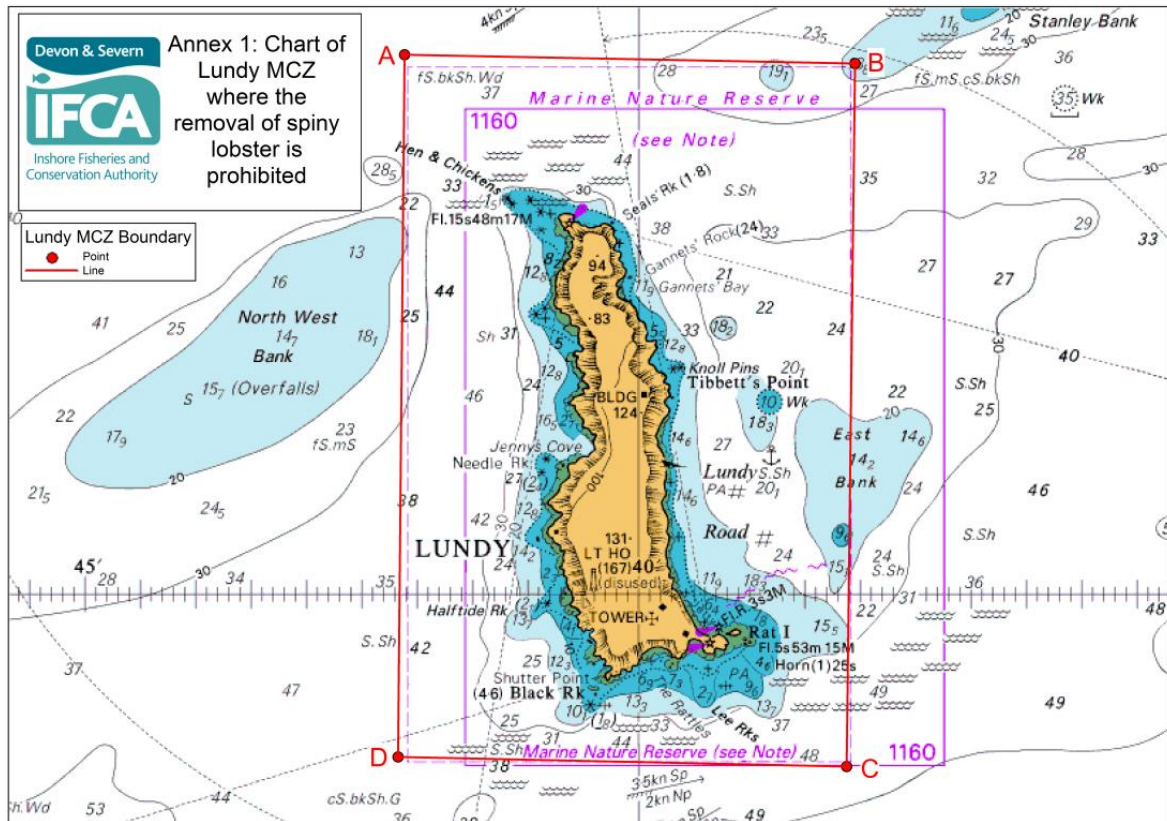


Annex 1: Lundy MCZ

Area where the removal of spiny lobster (*Palinurus elephas*) is prohibited

Point number	Latitude	Longitude
A	51° 13.022' N	004° 42.114' W
B	51° 12.972' N	004° 38.047' W
C	51° 08.986' N	004° 38.123' W
D	51° 09.040' N	004° 42.172' W



Annex 2: Skerries Bank and Surrounds MCZ

Area where the removal of spiny lobster (*Palinurus elephas*) is prohibited

Point number	Latitude	Longitude
A	50° 13.418' N	003° 46.374' W
B	50° 15.954' N	003° 39.113' W
C	50° 16.380' N	003° 34.400' W
D	50° 13.993' N	003° 35.645' W
E	50° 13.585' N	003° 35.124' W
F	50° 16.441' N	003° 33.382' W
G	50° 19.140' N	003° 32.278' W
H	50° 19.440' N	003° 31.278' W
I	50° 18.290' N	003° 28.882' W
J	50° 15.839' N	003° 30.085' W
K	50° 13.489' N	003° 31.588' W
L	50° 12.639' N	003° 30.490' W
M	50° 09.789' N	003° 32.892' W
N	50° 07.289' N	003° 35.594' W
O	50° 05.239' N	003° 38.394' W
P	50° 06.190' N	003° 41.839' W
Q	50° 06.141' N	003° 43.089' W
R	50° 09.041' N	003° 44.183' W
S	50° 10.942' N	003° 45.079' W
T	50° 12.243' N	003° 45.876' W

