

Annex 1 Scallop dredging in Salcombe Estuary

Salcombe Estuary and details of Access and No Access Areas

Area where scallop dredging can take place between Line A drawn across the estuary from Snapes Point to Scoble Point and Line B drawn across the estuary from Woodville Rocks to Ager Point, defined by:

Line A

Latitude			Longitude		
50 ⁰	14.445'	N	003 ⁰	45.534'	W
50 ⁰	14.416'	N	003 ⁰	45.349'	W

and

Line B

Latitude			Longitude		
50 ⁰	13.884'	N	003 ⁰	46.456'	W
50 ⁰	13.850'	N	003 ⁰	46.025'	W

Within the area detailed above, scallop dredging is prohibited in the following zones A & B as follows:

Zone A

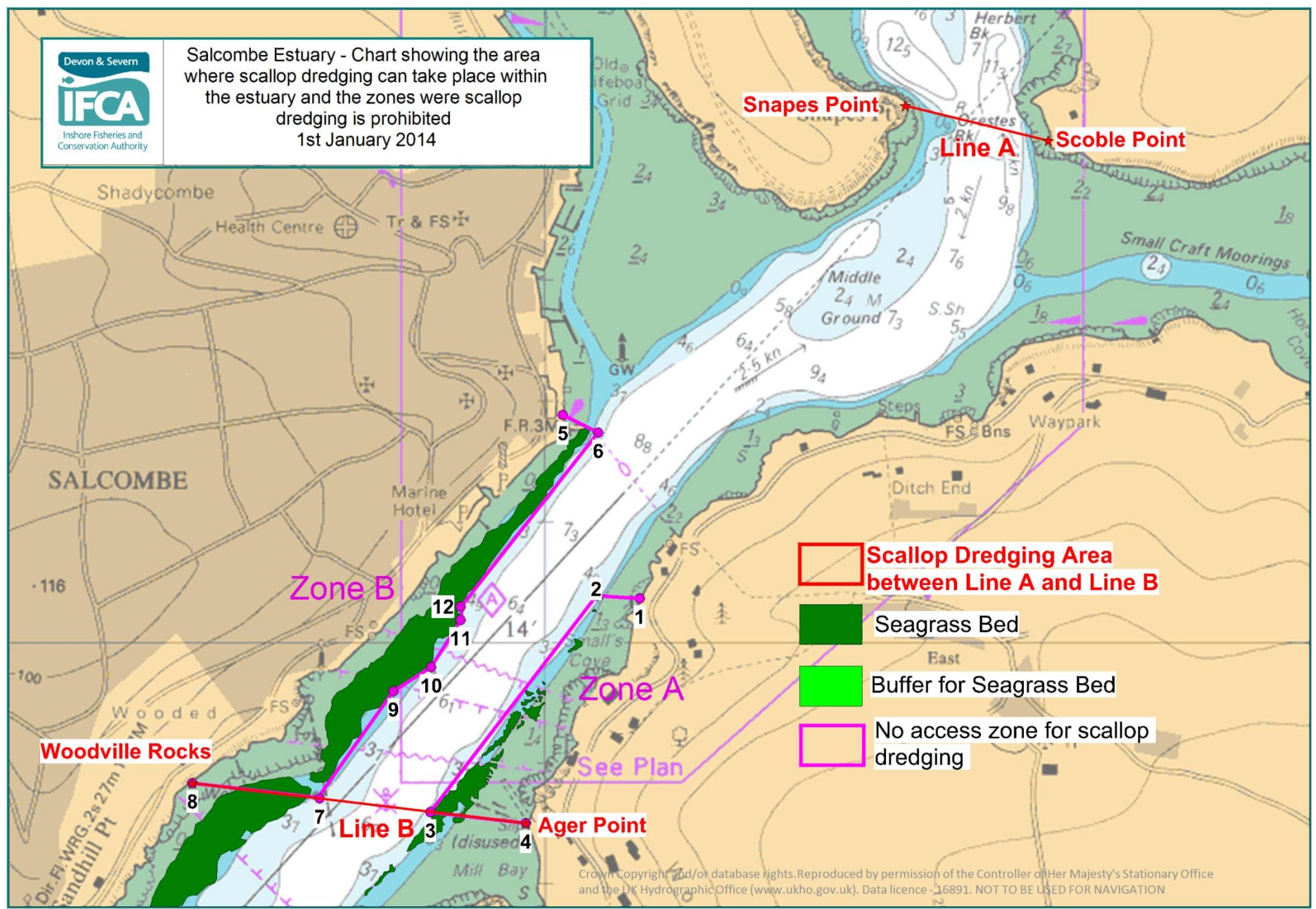
Point Number	Latitude			Longitude		
1	50 ⁰	14.037'	N	003 ⁰	45.878'	W
2	50 ⁰	14.039'	N	003 ⁰	45.934'	W
3	50 ⁰	13.860'	N	003 ⁰	46.148'	W
4	50 ⁰	13.850'	N	003 ⁰	46.025'	W

Zone B

Point Number	Latitude			Longitude		
5	50 ⁰	14.189'	N	003 ⁰	45.977'	W
6	50 ⁰	14.174'	N	003 ⁰	45.932'	W
7	50 ⁰	13.871'	N	003 ⁰	46.292'	W
8	50 ⁰	13.884'	N	003 ⁰	46.456'	W
9	50 ⁰	13.960'	N	003 ⁰	46.196'	W
10	50 ⁰	13.980'	N	003 ⁰	46.147'	W
11	50 ⁰	14.019'	N	003 ⁰	46.109'	W
12	50 ⁰	14.030'	N	003 ⁰	46.109'	W



Salcombe Estuary - Chart showing the area where scallop dredging can take place within the estuary and the zones where scallop dredging is prohibited
1st January 2014



Crown Copyright and/or database rights. Reproduced by permission of the Controller of Her Majesty's Stationary Office and the UK Hydrographic Office (www.ukho.gov.uk). Data licence - 16891. NOT TO BE USED FOR NAVIGATION