

## Annex 3 Lyme Bay and Torbay cSAC – No Demersal Mobile Gear Area

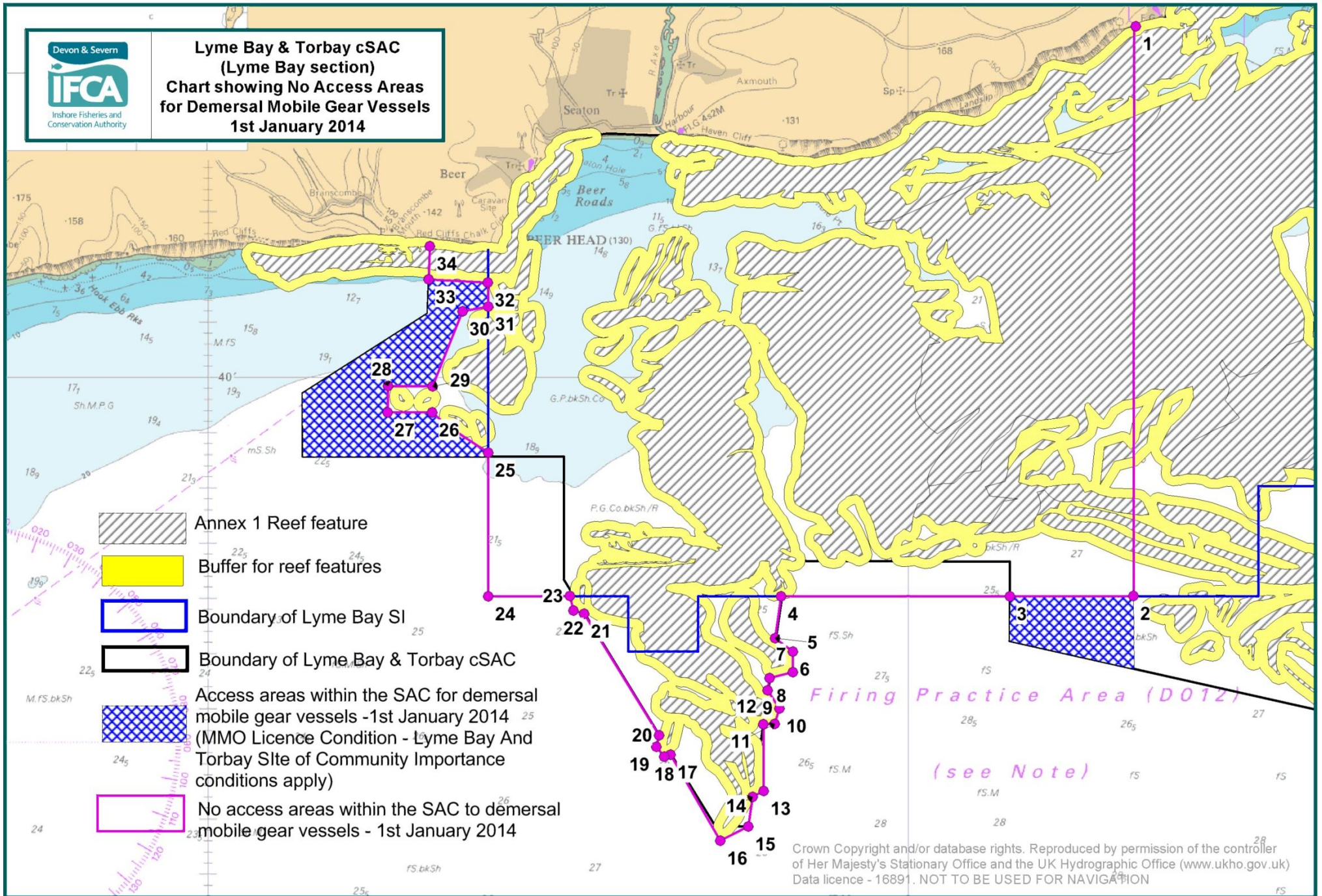
### Lyme Bay Section

No access to the areas outlined by the following points, the landward boundary follows Mean High Water.

Point Number	Latitude			Longitude		
1	50°	43.163'	N	002°	56.751'	W
2	50°	38.005'	N	002°	56.786'	W
3	50°	38.001'	N	002°	58.551'	W
4	50°	38.000'	N	003°	01.817'	W
5	50°	37.622'	N	003°	01.901'	W
6	50°	37.500'	N	003°	01.648'	W
7	50°	37.314'	N	003°	01.648'	W
8	50°	37.262'	N	003°	01.980'	W
9	50°	37.150'	N	003°	02.009'	W
10	50°	36.986'	N	003°	01.839'	W
11	50°	36.848'	N	003°	01.908'	W
12	50°	36.844'	N	003°	02.071'	W
13	50°	36.241'	N	003°	02.064'	W
14	50°	36.186'	N	003°	02.223'	W
15	50°	35.917'	N	003°	02.283'	W
16	50°	35.790'	N	003°	02.686'	W
17	50°	36.568'	N	003°	03.393'	W
18	50°	36.552'	N	003°	03.485'	W
19	50°	36.640'	N	003°	03.598'	W
20	50°	36.743'	N	003°	03.562'	W
21	50°	37.846'	N	003°	04.632'	W
22	50°	37.873'	N	003°	04.782'	W
23	50°	38.006'	N	003°	04.835'	W
24	50°	38.000'	N	003°	06.000'	W
25	50°	39.303'	N	003°	06.000'	W
26	50°	39.667'	N	003°	06.800'	W
27	50°	39.667'	N	003°	07.438'	W
28	50°	39.908'	N	003°	07.433'	W
29	50°	39.904'	N	003°	06.796'	W
30	50°	40.583'	N	003°	06.367'	W
31	50°	40.625'	N	003°	06.000'	W
32	50°	40.843'	N	003°	06.006'	W
33	50°	40.870'	N	003°	06.851'	W
34	50°	41.171'	N	003°	06.837'	W



**Lyme Bay & Torbay cSAC  
(Lyme Bay section)  
Chart showing No Access Areas  
for Demersal Mobile Gear Vessels  
1st January 2014**



## Annex 3 Lyme Bay and Torbay cSAC – No Demersal Mobile Gear Area

### Torbay Section

No access to the areas outlined by the following points, the landward boundary follows Mean High Water.

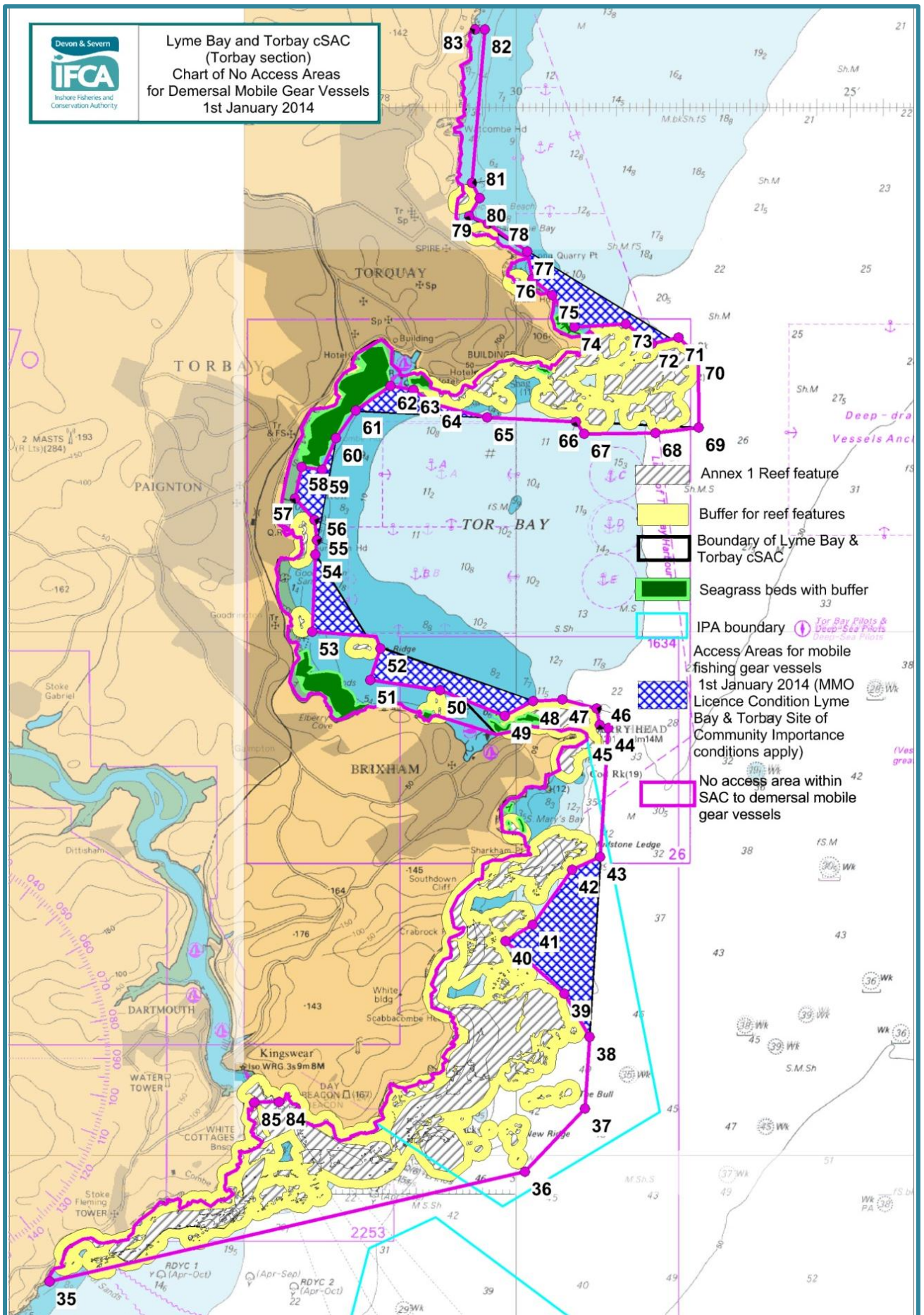
Point Number	Latitude			Longitude		
35	50°	18.783'	N	003°	36.983'	W
36	50°	19.833'	N	003°	29.867'	W
37	50°	20.433'	N	003°	28.967'	W
38	50°	21.118'	N	003°	28.898'	W
39	50°	21.531'	N	003°	29.279'	W
40	50°	22.031'	N	003°	30.160'	W
41	50°	22.187'	N	003°	29.752'	W
42	50°	22.713'	N	003°	29.163'	W
43	50°	22.836'	N	003°	28.740'	W
44	50°	24.067'	N	003°	28.617'	W
45	50°	24.096'	N	003°	28.745'	W
46	50°	24.250'	N	003°	28.796'	W
47	50°	24.338'	N	003°	29.307'	W
48	50°	24.321'	N	003°	29.741'	W
49	50°	24.181'	N	003°	30.171'	W
50	50°	24.426'	N	003°	31.137'	W
51	50°	24.525'	N	003°	32.183'	W
52	50°	24.823'	N	003°	32.030'	W
53	50°	24.984'	N	003°	33.050'	W
54	50°	25.721'	N	003°	33.007'	W
55	50°	25.858'	N	003°	32.980'	W
56	50°	26.053'	N	003°	33.015'	W
57	50°	26.257'	N	003°	33.311'	W
58	50°	26.557'	N	003°	33.210'	W
59	50°	26.531'	N	003°	32.897'	W
60	50°	26.833'	N	003°	32.695'	W
61	50°	27.096'	N	003°	32.400'	W
62	50°	27.331'	N	003°	31.878'	W
63	50°	27.293'	N	003°	31.533'	W
64	50°	27.154'	N	003°	31.214'	W
65	50°	27.030'	N	003°	30.432'	W
66	50°	26.989'	N	003°	29.100'	W
67	50°	26.871'	N	003°	28.979'	W
68	50°	26.882'	N	003°	27.911'	W
69	50°	26.933'	N	003°	27.267'	W
70	50°	27.615'	N	003°	27.270'	W
71	50°	27.792'	N	003°	27.568'	W
72	50°	27.731'	N	003°	27.963'	W
73	50°	27.920'	N	003°	28.353'	W
74	50°	27.891'	N	003°	29.125'	W


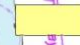

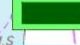





Point Number	Latitude			Longitude		
75	50°	28.194'	N	003°	29.459'	W
76	50°	28.347'	N	003°	29.755'	W
77	50°	28.612'	N	003°	29.832'	W
78	50°	28.878'	N	003°	30.420'	W
79	50°	28.950'	N	003°	30.700'	W
80	50°	29.120'	N	003°	30.541'	W
81	50°	29.267'	N	003°	30.659'	W
82	50°	30.733'	N	003°	30.467'	W
83	50°	30.733'	N	003°	30.612'	W
84	50°	20.496'	N	003°	33.546'	W
85	50°	20.496'	N	003°	33.912'	W



Lyme Bay and Torbay cSAC  
(Torbay section)  
Chart of No Access Areas  
for Demersal Mobile Gear Vessels  
1st January 2014



-  Annex 1 Reef feature
-  Buffer for reef features
-  Boundary of Lyme Bay & Torbay cSAC
-  Seagrass beds with buffer
-  IPA boundary
-  Access Areas for mobile fishing gear vessels 1st January 2014 (MMO Licence Condition Lyme Bay & Torbay Site of Community Importance conditions apply)
-  No access area within SAC to demersal mobile gear vessels