

**Annex 5** Start Point to Plymouth Sound an Eddystone cSAC (Areas B & C)  
No Demersal Mobile Gear Areas

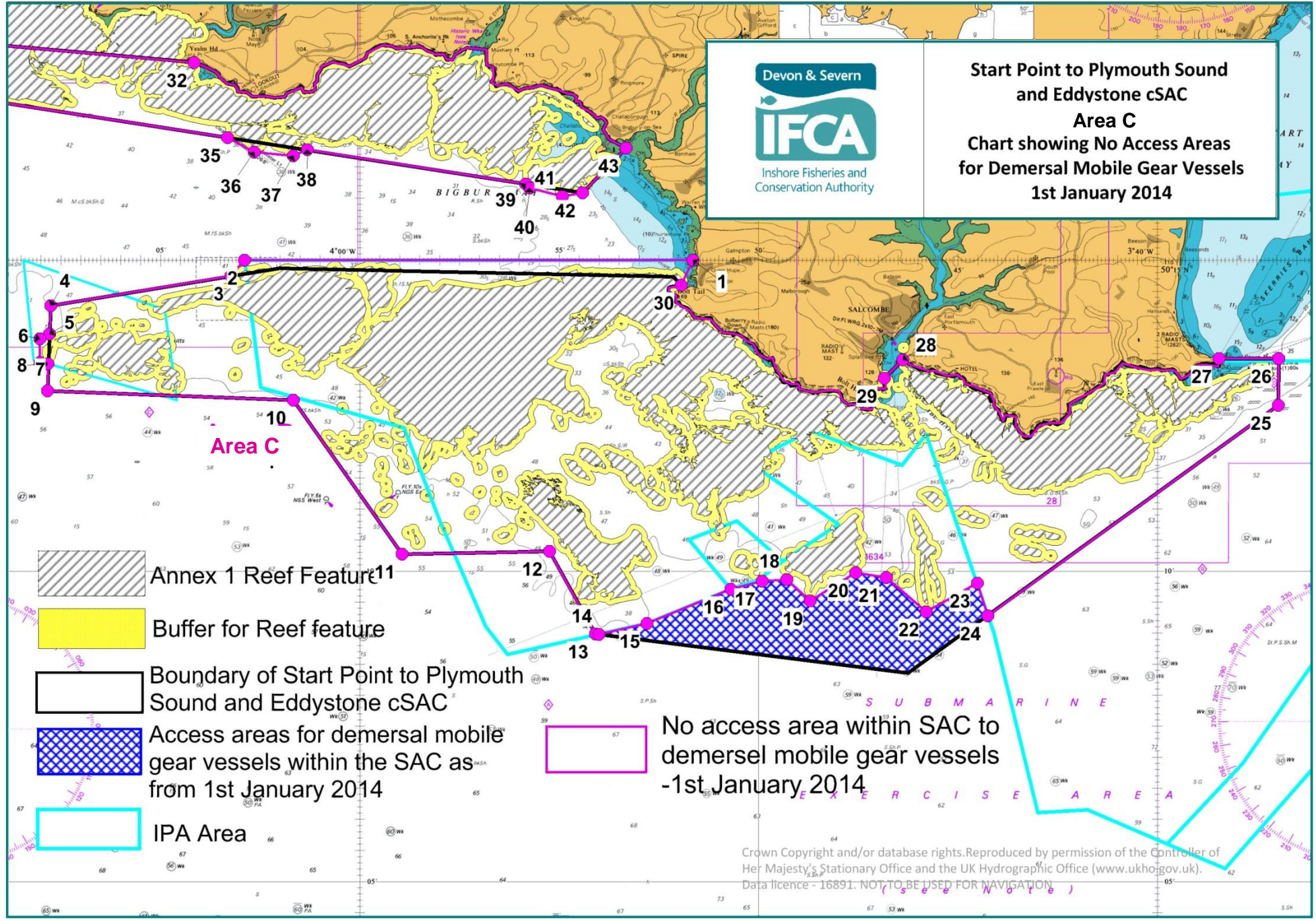
**Area C - Start Point to West Rutts Reefs**

No access to the areas outlined by the following points, the landward boundary follows Mean High Water.

<b>Point Number</b>	<b>Latitude</b>	<b>Longitude</b>
1	50 <sup>0</sup> 15.000' N	003 <sup>0</sup> 51.650' W
2	50 <sup>0</sup> 15.000' N	004 <sup>0</sup> 02.900' W
3	50 <sup>0</sup> 14.748' N	004 <sup>0</sup> 03.251' W
4	50 <sup>0</sup> 14.267' N	004 <sup>0</sup> 07.767' W
5	50 <sup>0</sup> 13.809' N	004 <sup>0</sup> 07.799' W
6	50 <sup>0</sup> 13.737' N	004 <sup>0</sup> 08.043' W
7	50 <sup>0</sup> 13.352' N	004 <sup>0</sup> 08.043' W
8	50 <sup>0</sup> 13.334' N	004 <sup>0</sup> 07.836' W
9	50 <sup>0</sup> 12.900' N	004 <sup>0</sup> 07.850' W
10	50 <sup>0</sup> 12.750' N	004 <sup>0</sup> 01.683' W
11	50 <sup>0</sup> 10.267' N	003 <sup>0</sup> 58.950' W
12	50 <sup>0</sup> 10.317' N	003 <sup>0</sup> 55.250' W
13	50 <sup>0</sup> 08.983' N	003 <sup>0</sup> 54.100' W
14	50 <sup>0</sup> 08.978' N	003 <sup>0</sup> 54.002' W
15	50 <sup>0</sup> 09.150' N	003 <sup>0</sup> 52.800' W
16	50 <sup>0</sup> 09.702' N	003 <sup>0</sup> 50.700' W
17	50 <sup>0</sup> 09.835' N	003 <sup>0</sup> 49.915' W
18	50 <sup>0</sup> 09.863' N	003 <sup>0</sup> 49.300' W
19	50 <sup>0</sup> 09.517' N	003 <sup>0</sup> 48.711' W
20	50 <sup>0</sup> 09.972' N	003 <sup>0</sup> 47.568' W
21	50 <sup>0</sup> 09.892' N	003 <sup>0</sup> 46.798' W
22	50 <sup>0</sup> 09.343' N	003 <sup>0</sup> 45.795' W
23	50 <sup>0</sup> 09.802' N	003 <sup>0</sup> 44.515' W
24	50 <sup>0</sup> 09.278' N	003 <sup>0</sup> 44.254' W
25	50 <sup>0</sup> 12.667' N	003 <sup>0</sup> 36.967' W
26	50 <sup>0</sup> 13.417' N	003 <sup>0</sup> 36.950' W
27	50 <sup>0</sup> 13.417' N	003 <sup>0</sup> 38.450' W
28	50 <sup>0</sup> 13.400' N	003 <sup>0</sup> 46.383' W
29	50 <sup>0</sup> 13.099' N	003 <sup>0</sup> 46.849' W
30	50 <sup>0</sup> 14.597' N	003 <sup>0</sup> 51.947' W



**Start Point to Plymouth Sound  
and Eddystone cSAC  
Area C  
Chart showing No Access Areas  
for Demersal Mobile Gear Vessels  
1st January 2014**



Annex 1 Reef Feature

Buffer for Reef feature

Boundary of Start Point to Plymouth Sound and Eddystone cSAC

Access areas for demersal mobile gear vessels within the SAC as from 1st January 2014

IPA Area

No access area within SAC to demersal mobile gear vessels -1st January 2014

Crown Copyright and/or database rights. Reproduced by permission of the Controller of Her Majesty's Stationary Office and the UK Hydrographic Office ([www.ukho.gov.uk](http://www.ukho.gov.uk)).  
Data licence - 16891. NOT TO BE USED FOR NAVIGATION

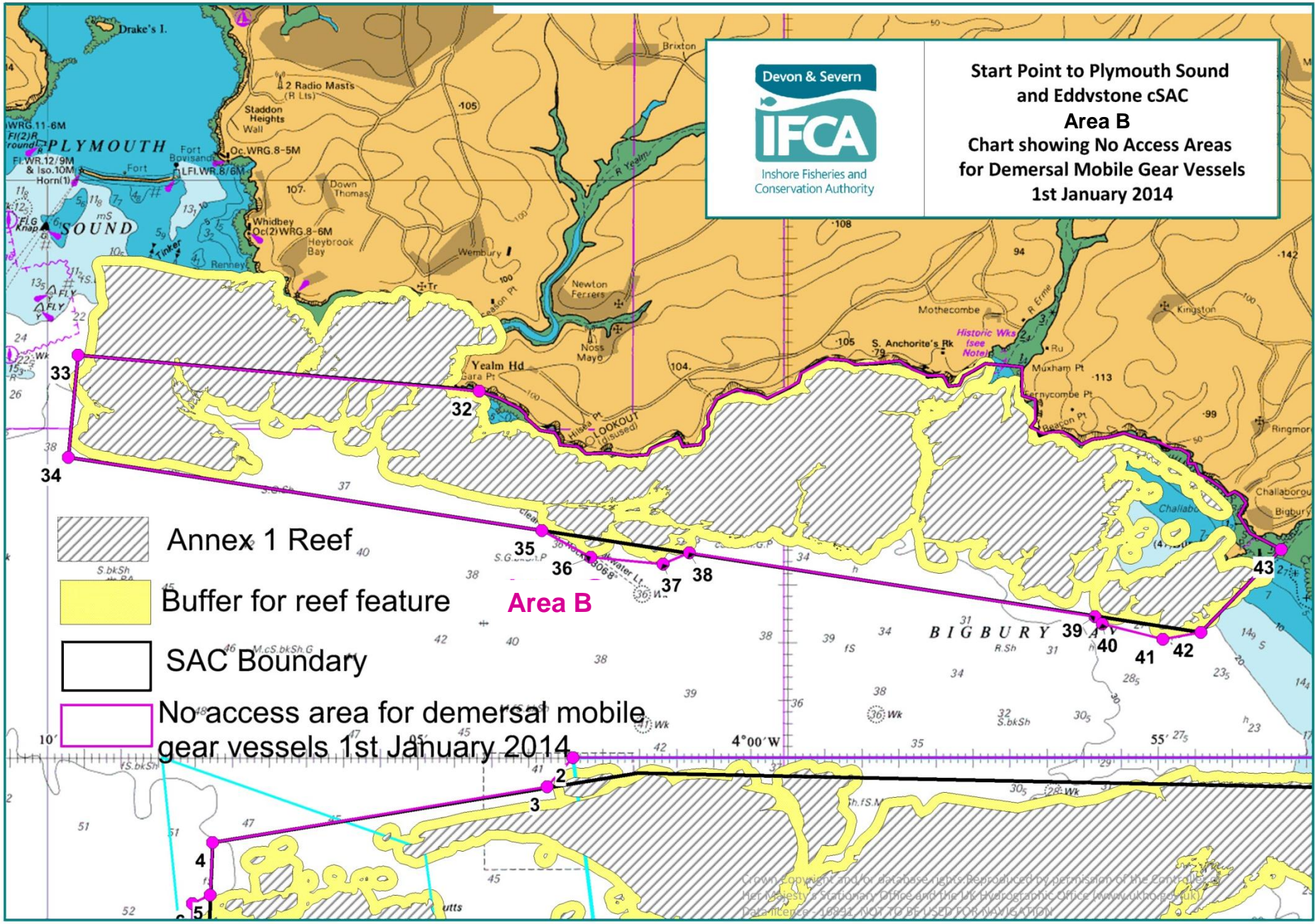
## Area B – Bigbury Bay to Plymouth Sound Reefs


No access to the areas outlined by the following points, the landward boundary follows Mean High Water.

Point Number	Latitude			Longitude		
32	50 <sup>0</sup>	18.174'	N	004 <sup>0</sup>	04.166'	W
33	50 <sup>0</sup>	18.483'	N	004 <sup>0</sup>	09.583'	W
34	50 <sup>0</sup>	17.600'	N	004 <sup>0</sup>	09.717'	W
35	50 <sup>0</sup>	16.967'	N	004 <sup>0</sup>	03.323'	W
36	50 <sup>0</sup>	16.734'	N	004 <sup>0</sup>	02.658'	W
37	50 <sup>0</sup>	16.678'	N	004 <sup>0</sup>	01.685'	W
38	50 <sup>0</sup>	16.775'	N	004 <sup>0</sup>	01.328'	W
39	50 <sup>0</sup>	16.222'	N	003 <sup>0</sup>	55.848'	W
40	50 <sup>0</sup>	16.158'	N	003 <sup>0</sup>	55.749'	W
41	50 <sup>0</sup>	16.026'	N	003 <sup>0</sup>	54.930'	W
42	50 <sup>0</sup>	16.083'	N	003 <sup>0</sup>	54.417'	W
43	50 <sup>0</sup>	16.800'	N	003 <sup>0</sup>	53.333'	W



**Start Point to Plymouth Sound  
and Eddystone cSAC  
Area B**  
Chart showing No Access Areas  
for Demersal Mobile Gear Vessels  
1st January 2014



-  Annex 1 Reef
-  Buffer for reef feature
-  SAC Boundary
-  No access area for demersal mobile gear vessels 1st January 2014

Crown copyright and database rights. Reproduced by permission of the Controller of Her Majesty's Stationary Office and the UK Hydrographic Office (www.ukho.gov.uk)  
Data licence: 18992. NOT TO BE USED FOR NAVIGATION