

## Annex 6 Severn SAC – No Demersal Mobile Gear Area

Charts 1, 2 and 3 show the no access areas and points as defined by:

<b>Point Number</b>	<b>Latitude</b>			<b>Longitude</b>		
1	51 <sup>0</sup>	37.086'	N	002°	39.737'	W
2	51 <sup>0</sup>	37.054'	N	002°	39.646'	W
3	51 <sup>0</sup>	36.591'	N	002°	39.711'	W
4	51 <sup>0</sup>	36.440'	N	002°	39.814'	W
5	51 <sup>0</sup>	35.648'	N	002°	39.963'	W
6	51 <sup>0</sup>	35.317'	N	002°	40.803'	W
7	51 <sup>0</sup>	35.227'	N	002°	41.227'	W
8	51 <sup>0</sup>	34.982'	N	002°	41.972'	W
9	51 <sup>0</sup>	34.832'	N	002°	42.202'	W
10	51 <sup>0</sup>	34.180'	N	002°	42.630'	W
11	51 <sup>0</sup>	33.880'	N	002°	42.530'	W
12	51 <sup>0</sup>	32.530'	N	002°	42.950'	W
13	51 <sup>0</sup>	31.580'	N	002°	47.150'	W
14	51 <sup>0</sup>	27.350'	N	002°	59.540'	W
15	51 <sup>0</sup>	25.530'	N	003 <sup>0</sup>	01.630'	W
16	51 <sup>0</sup>	21.510'	N	003 <sup>0</sup>	06.290'	W
17	51 <sup>0</sup>	21.450'	N	003 <sup>0</sup>	06.930'	W
18	51 <sup>0</sup>	21.093'	N	003 <sup>0</sup>	10.173'	W
19	51 <sup>0</sup>	12.256'	N	003 <sup>0</sup>	10.641'	W
20	51 <sup>0</sup>	12.005'	N	003 <sup>0</sup>	10.515'	W

Chart 1

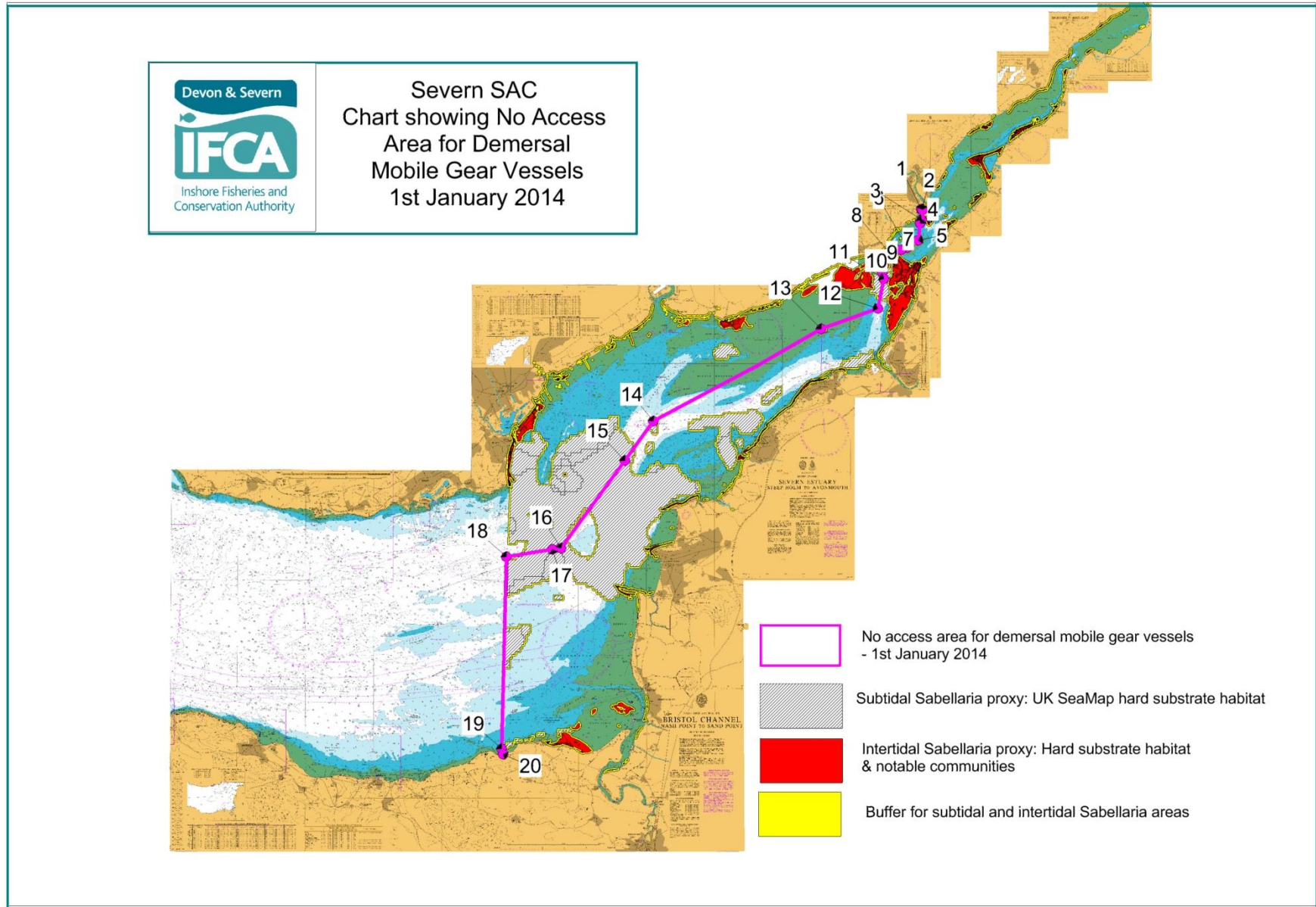


Chart 2

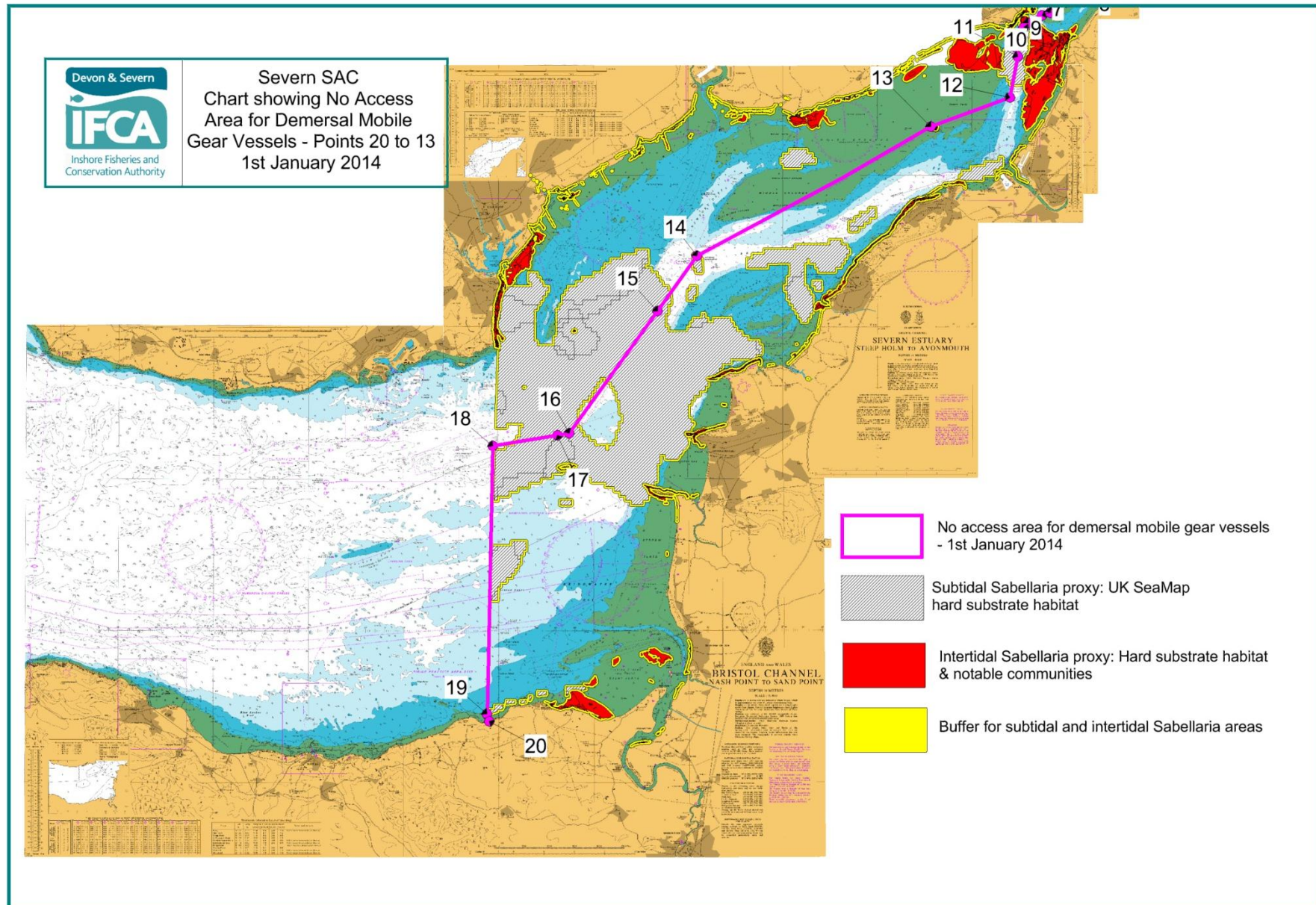


Chart 3

