



HOPKINS CATTLE GRIDS

THE ORIGINAL QUICK FIT CATTLE GRID

Installation Guide

If you any issues
with the installation,
give us a call on
01686 627374



 01686 627374

 info@hopkinscattlegrids.co.uk



HOPKINS

CATTLE GRIDS

Table of Contents

Installation Guide

What's in the bag?	3
Securing the bolts	4
Securing the bolts (Highway/ 120T + Edition)	4
Installing the top sections	5

Installation Guide- Deer Grid

How do the grids arrive on site?	6
----------------------------------	---

Installation Guide- Cattle Grid

1st Stage	10
2nd Stage	11
3rd Stage	12
4th Stage	13
5th Stage	14
Concrete Installation	14

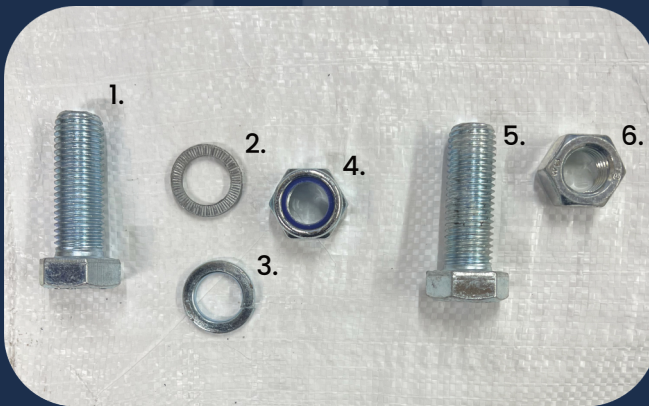


HOPKINS CATTLE GRIDS

Installation Guide

The simplicity of the Hopkins Cattle & Deer Grids is unmatched but here is a helpful guide to some very important stages of the installation.

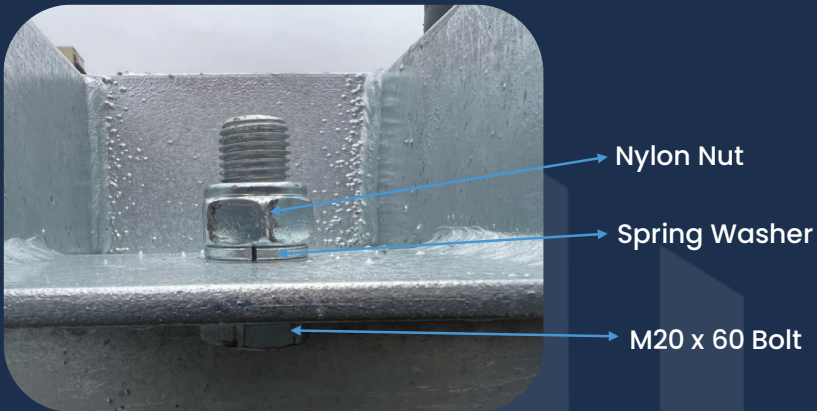
What's in the bag?



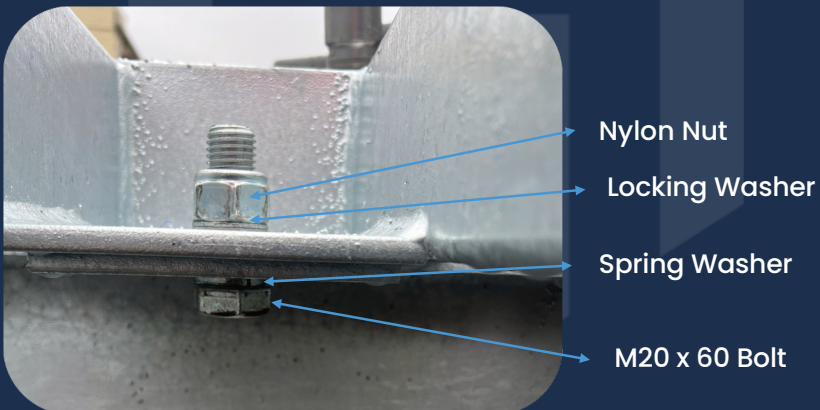
1. M20 x 60 bolt
2. Locking washer (highway unit only)
3. Spring washer
4. Nylon nut
5. M20 x 60 bolt
6. Plain M20 nut (2.7m+ jump grid only)

Securing the bolts

Each grid is supplied with a tailored number of M20 bolts, spring loaded washers and nylon nuts (highway units will have special locking washers in addition to spring). Please find below an image detailing the correct set up for them.



Securing the bolts (Highway/120T + Edition)



Installing the top sections

A crucial part of the installation is ensuring the grid tops are correctly positioned in the base frame. This is done by matching the numbers on the top section with those on the base frame as per picture below.





HOPKINS CATTLE GRIDS

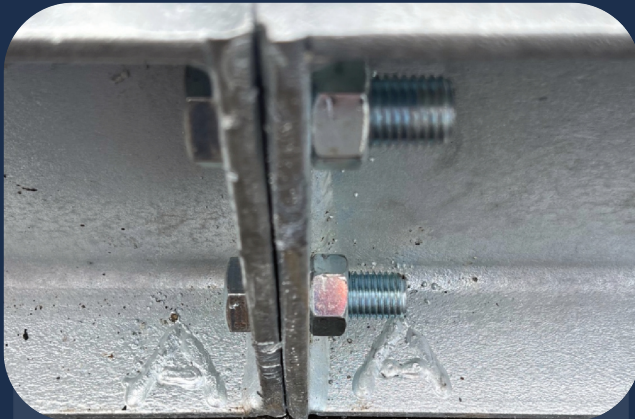
Installation Guide- Deer Grid

How do the grids arrive on site?

Pictured below is how the grid will arrive on site. The base frame will come in two sections for transport along with 4 top sections that bolt inside. The most practical way to remove this from the lorry is with a forklift, inserting the forks below the bottom beam and lifting the unit in one, please check the lifting weights and lifting capacity of your vehicle before attempting this. If your equipment cannot lift the complete unit it has be removed per section, the unit weights are available by request from our office.



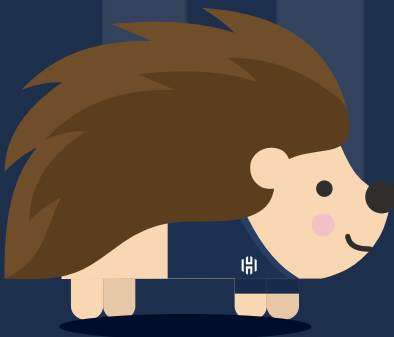
Once you have excavated the pit and laid a hardcore foundation/ concrete pad (depending on your chosen method) the base frame can now be bolted together to form one complete unit, you are supplied with 8 M20 x 60 Sets and Plain Nuts for this. Pictured below is the unit complete with the bolts secured in place. It is crucial the base is secured correctly. Match up the letter found on the base like below, for example on this grid it is A + A.



Once the base frame has been installed you can now begin lowering the top sections into the frame. These again must be installed correctly and will be issued with numbers that correspond with the base so match these up to ensure the correct fit. For example, this grid has tops 1,2,3 and 4. Please note depending on the production number, these will not always be 1,2,3,4 but the principle remains the same.



Finally, secure these tops into the frame with the correct fixings supplied, drop your side rails into the sockets (if you ordered the optional side railings) and your Hopkins Quickfit Deer Grid is ready for immediate use (hardcore installation ready for immediate use, if you are installing using concrete, please ensure the concrete has cured before using.)



If you any issues with the installation, give us a call on 01686 627374



HOPKINS CATTLE GRIDS

Installation Guide – Cattle Grid

Photos are courtesy of A.C Bufton Landscape Gardening and Groundworks.

1st Stage

Excavate a pit to take the size of grid, 30 inches deep and remove excavation to edge of site and level off.



2nd Stage

Supply and lay 100mm perforated drain in pit to discharge any accumulation of water (if required). Supply and lay hardcore in base of pit and fully consolidate (12 inches when consolidated).



There are 150mm outlet holes in the outside of the base to pipe excessive water to a ditch or drain if needed. The grid frame can now be off-loaded and carefully lowered into the pit.

3rd Stage

The grid sections are then placed on top of the grid frame and are retained in position by a Steel Flat up-stand and secured using the bolts provided.



4th Stage

The wing panels can then be fitted in slots provided, thereafter the area around the grid frame is back filled with hardcore and consolidated.



5th Stage

Three hours later. The grid is ready for immediate use.



Concrete Installation (a requirement for the highway units)

Frame to be bedded on a minimum 150mm thick slab, RC32/40 concrete mix to B58500 with A193 fabric top and bottom, 300mm laps with 40mm cover cast on suitable base of 150mm minimum layer of well compacted MOT Type 1 stone hardcore.