

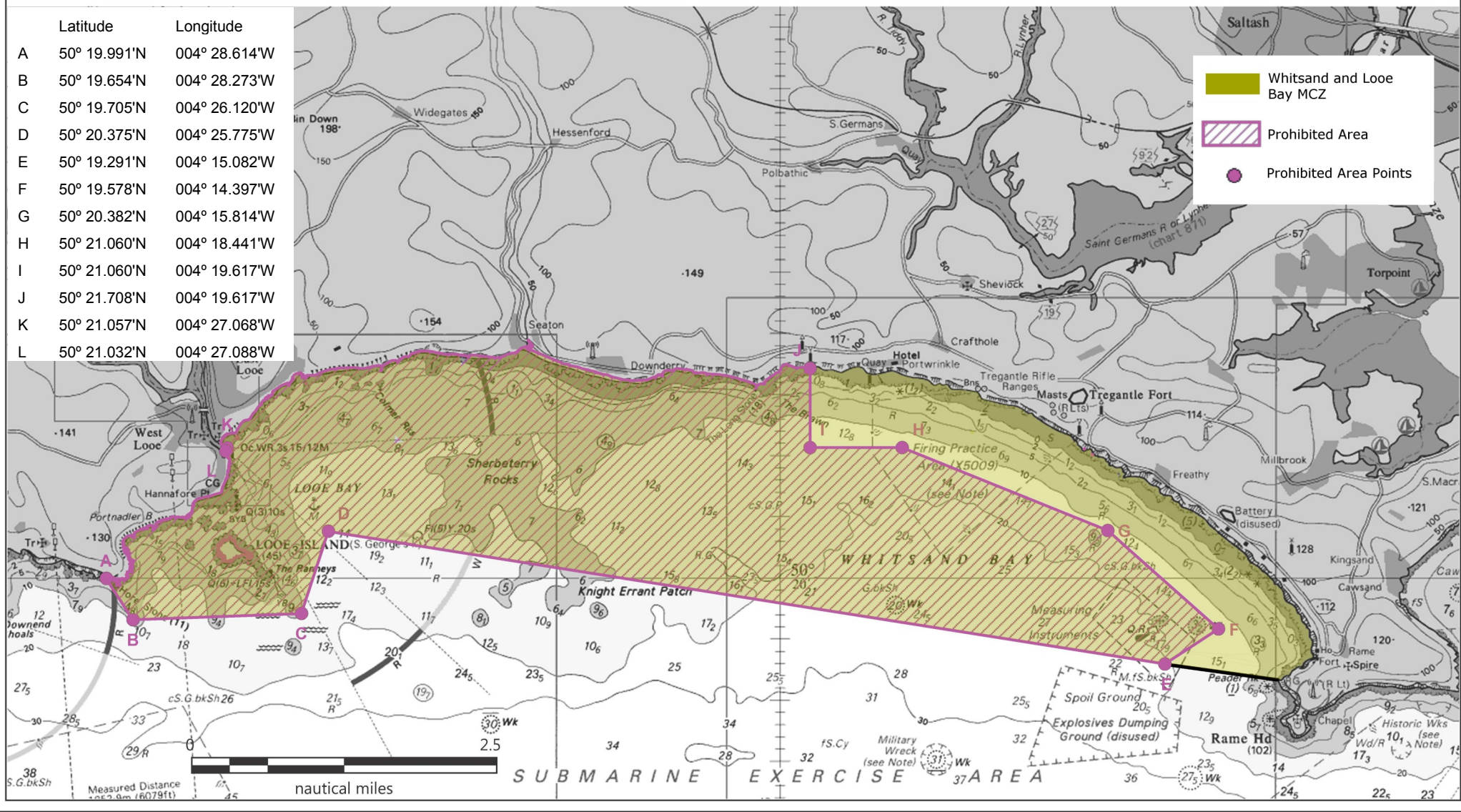
# Whitsand and Looe Bay MCZ (Fishing Restrictions) Byelaw 2018

## Prohibited area for using bottom towed gear

This product has been derived in part from material obtained from the UK Hydrographic Office with the permission of the Controller of Her Majesty's Stationery Office and UK Hydrographic Office (www.ukho.gov.uk). © British Crown and SeaZone Solutions Ltd, 2004. All rights reserved. Data Licence No. 122004.003. NOT TO BE USED FOR NAVIGATION.

For illustrative purposes only

	Latitude	Longitude
A	50° 19.991'N	004° 28.614'W
B	50° 19.654'N	004° 28.273'W
C	50° 19.705'N	004° 26.120'W
D	50° 20.375'N	004° 25.775'W
E	50° 19.291'N	004° 15.082'W
F	50° 19.578'N	004° 14.397'W
G	50° 20.382'N	004° 15.814'W
H	50° 21.060'N	004° 18.441'W
I	50° 21.060'N	004° 19.617'W
J	50° 21.708'N	004° 19.617'W
K	50° 21.057'N	004° 27.068'W
L	50° 21.032'N	004° 27.088'W



- Whitsand and Looe Bay MCZ
- Prohibited Area
- Prohibited Area Points

SUBMARINE EXERCISE AREA