

Cornwall IFCA general information sheet



Fish and shellfish minimum sizes

www.cornwall-ifca.gov.uk

Fish Species	Length
Anchovy*	12cm
Bass	42cm
Black Seabream ⁺	23cm
Blue Ling	70cm
Brill ⁺	30cm
Cod	35cm
Conger Eel ⁺	58cm
Dab ⁺	15cm
Flounder ⁺	25cm
Grey Mullet ⁺	20cm
Haddock	30cm
Hake ⁺	30cm
Herring	20cm
Horse Mackerel*	15cm
Lemon Sole ⁺	25cm
Ling	63cm
Mackerel*	20cm
Megrim ⁺	25cm
Plaice	27cm
Pollack	30cm
Red Mullet ⁺	15cm
Red Seabream	33cm
Saithe	35cm
Sardine*	11cm
Sole	24cm
Turbot ⁺	30cm
Whiting	27cm
Witch Flounder ⁺	28cm

Crustacea	Carapace
Crawfish ⁺	110mm
Edible Crab female ⁺	150mm
Edible Crab male ⁺	160mm
Spider Crab ⁺	130mm
Velvet Crab	65mm
Lobster ⁺	90mm
Deepwater Rose Shrimp:	22mm (carapace)
Norway Lobster:	85mm overall length, or 25mm carapace or tails 46mm

See reverse for guidance on measuring fish and shellfish, and for more information about specific fishery licences and permits issued by Cornwall IFCA

Shellfish:

Bivalve molluscs and whelks shall be measured across the longest part of the shell.

Bean Solen	65mm
Carpet Shell	38mm
Clam	40mm
Donax Clam	25mm
Grooved Carpetshell	40mm
Queen Scallop	40mm
Razor Clam	100mm
Scallop	100mm
Short Necked Clam	35mm
Surf Clam	25mm
Whelk	45mm
Octopus	750g

The commercial harvesting of bivalve molluscs for human consumption is subject to them being taken from a designated area where water quality is monitored and classified as suitable by the Foods Standards Agency. For local information on harvesting areas and shellfish depuration please contact the Port Health Authority on 01872 323090.

Vessels with a commercial fishing licence may be required by the Landing Obligation to retain fish smaller than the minimum sizes listed here.

*Undersize anchovy, horse mackerel, mackerel and sardine caught for use as live bait may be retained on board provided they are retained alive. They must not be landed.

⁺ The minimum size results from a legacy byelaw inherited by Cornwall IFCA. There are some small areas within the Cornwall IFCA district where this byelaw may not apply. Please contact us if you need more information.

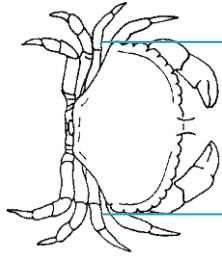
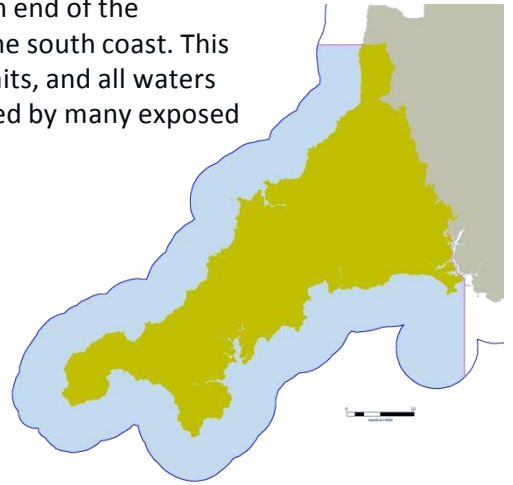
Mussel (Fal Fishery) – A person must not remove from the Fal Fishery Area any mussel less than 50mm in length.

Native Oyster (Fal Fishery) – A person must not remove from the Fal Fishery Area any native oyster which will pass through a circular aperture of 67mm diameter when the shell is laid flat across the aperture. [Please note a Fal Fishery licence is required to remove the above two species. See reverse for more details.]

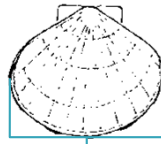
Cockles in estuaries – No person shall remove from Cornish estuaries any cockle that will pass through a space of 20mm width.

Winkle – A Cornwall IFCA code of practice requests that winkles should only be retained if they fail to pass through a riddle constructed of rigid mesh or bars spaced at least 16mm apart.

The Cornwall IFCA District extends from Marsland Mouth on the north coast of Cornwall, around to the western end of the Plymouth Breakwater in Plymouth Sound on the south coast. This includes the rivers and estuaries up to tidal limits, and all waters out to six nautical miles. The District is extended by many exposed rocks including the Eddystone rocks.



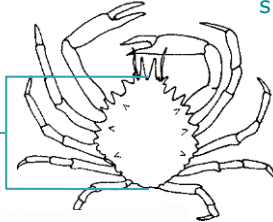
Edible Crab
Cancer pagarus
Minimum size
Male: 160mm
Female: 150mm



Scallop
Pecten maximus
Minimum size 100mm

Spider Crab
Maja spp.

Minimum size, both male and female: 130mm

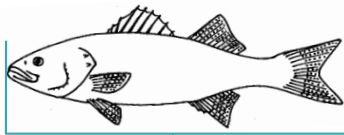
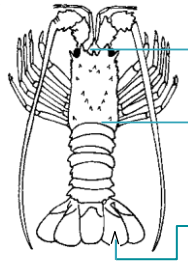


Crawfish
Palinurus Elephas

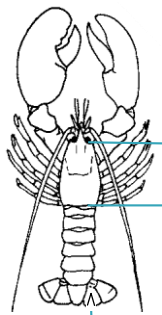
Minimum size 110mm (carapace).

Crawfish which are 'berried' (carrying eggs) are protected and must be returned to the sea.

Crawfish with a 'V' notch or a damaged tail flap must be returned to the sea.



All fish species to be measured from the tip of the snout to the end of the tail fin.



Lobster
Homarus gammarus
Minimum size 90mm (carapace)

Lobsters which are 'berried' (carrying eggs) are protected and must be returned to the sea.

Lobsters with a 'V' notch or a damaged tail flap must be returned to the sea.

Crawfish – measured as the length of the carapace from the tip of the rostrum to the midpoint of the distal edge of the carapace

Edible Crab – measured as the maximum width of the carapace measured perpendicular to the midline

Lobster – measured as the length of the carapace, parallel to the mid line, from the back of either eye socket to the distal edge of the carapace

Spider Crab – measured as the length of the carapace, along the midline, from the edge of the carapace between the rostrums to the posterior edge of the carapace

Velvet Crab – measured as the width of the carapace across the broadest part of the back (excluding spines)

Cornwall IFCA River and Estuarine Fishing Nets Byelaw: It is an offence to use a net for sea fish in any of the rivers or estuaries within the Cornwall IFCA district, this does not apply to various low impact nets such as; landing nets, Sand eel seine nets used under a permit issued by Cornwall IFCA and Ebb nets used under a permit issued by Cornwall IFCA. Please visit the website or contact the office for more information.

Shellfish permit: An annually renewable permit is required for any person fishing from a boat and removing more than five animals from the species of lobster, crawfish, edible or spider crab (with no more than two from the species of lobster and crawfish) per day. Shellfish permits are only issued for licenced and registered fishing boats.

Fal Fishery: The native oyster and mussel fisheries in the Fal are under the management of Cornwall IFCA. If you wish to dredge for, or hand-gather oysters or mussels from within the area covered by the Fal Fishery Order you will need to apply to Cornwall IFCA for a Fal Fishery licence.

www.cornwall-ifca.gov.uk Tel: 01736 336842

Cornwall IFCA, Chi Gallos, Hayle Marine Renewables Business Park, North Quay, Hayle, Cornwall TR27 4DD
Information correct as of 1 October 2017, please check website or contact our office for the latest information.