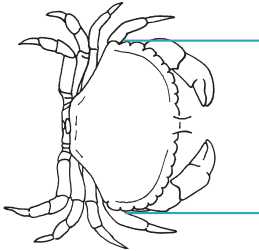
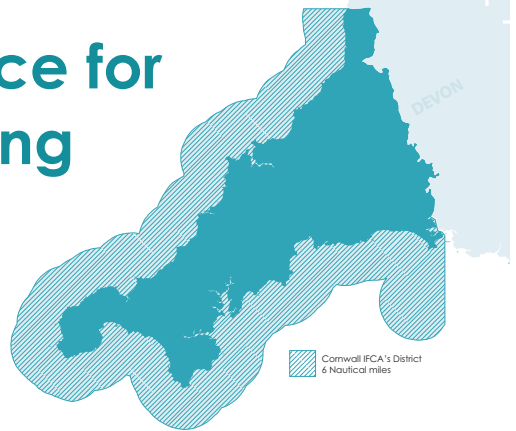


# Shellfish guidance for recreational fishing

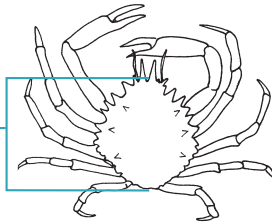


**Edible Crab**  
*Cancer pagurus*

- Minimum size  
Male: 160mm  
Female: 150mm

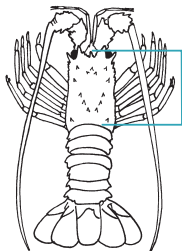
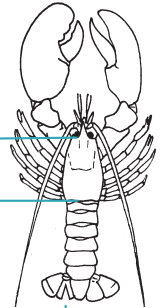
**Spider Crab**  
*Maja spp.*

- Minimum size,  
both male and  
female: 130mm



**Lobster**  
*Homarus gammarus*

- Minimum  
size 90mm  
(carapace)
- Lobsters which are  
'berried' (carrying  
eggs) are  
protected and  
must be returned  
to the sea.
- Lobsters with a  
'V' notch or a  
damaged tail  
flap must be  
returned to the  
sea.



**Crawfish**  
*Palinurus elephas*

- Minimum size 110mm  
(carapace)
- Crawfish which are  
'berried' (carrying  
eggs) are  
protected and must be  
returned to the sea.

## Shellfish Permit

An annually renewable permit is required for any person fishing from a boat and removing more than five animals from the species of lobster, crawfish, edible or spider crab (with no more than two from the species of lobster and crawfish) per day. Shellfish permits are only issued for licenced and registered fishing boats.