

Cornwall IFCA Guide to Non-Native Species

Some non-native species have the potential to seriously impact on the fishing industry through fouling fishing gear, changing habitats, competing with our native species or introducing disease.

The following species are not a complete list but just some of the non-native species that could impact the local fishing industry. If you see these species, or other new species, please report them as soon as possible to Cornwall IFCA at enquiries@cornwall-ifca.gov.uk (FAO Research Team) or on 01736 336 842. Please try to take a photograph, record the date, location, number of individuals and sex (if distinguishable).

Please do not release non-native species back into the wild, this is a criminal offence

American Lobster



Cornwall IFCA

- 'Ventral tooth'
- Red tipped spines on rostrum
- Olive green/greenish brown in colour
- Underside of claws usually orange-red
- Tends to be larger than native lobster

Chinese Mitten Crab



Fera ©Crown Copyright 2009 (GB NNS website)

- Notch at the front of carapace
- Dense mats of hair on claws
- More square in shape than shore crab
- Long, hairy legs
- Up to 80mm across carapace

Carpet Sea Squirt



CCW ©Crown Copyright 2009 (GB NNS website)

- Appears translucent
- Tube like bodies on surface
- Dark 'veins' with pores on surface
- Variable colour; white/cream/brown
- Firm, smooth texture
- May form mats over fishing gear

This species can be very difficult to identify. If you suspect it is present please take photographs and email them to Cornwall IFCA who will seek expert confirmation.

Asian Shore Crabs

There are two species of Asian shore crab

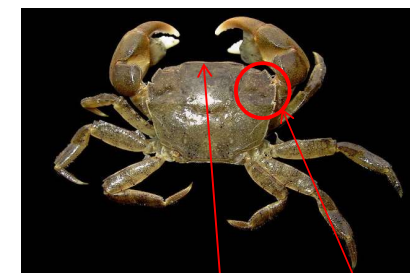
Hemigrapsus sanguineus



Wikimedia Commons

- Carapace nearly straight between eyes
- Square shaped carapace, with 3 pointed teeth on each side
- Up to 45mm across carapace
- Banding on legs
- Dark purple, red or brown spots on the upper side of pincers

Hemigrapsus takanoi



© Hans Hillewaert

- Carapace nearly straight between eyes
- Square shaped carapace, with 3 pointed teeth on each side
- Up to 25mm across carapace
- Often has tiny dark spots on parts of body and claws

Thank you for reporting your sightings.