



Inshore Fisheries and  
Conservation Authority

## Eddystone Reefs Drop Down Video 2017



Survey field report for the 2017 Eddystone Reefs  
Drop Down Video survey

Completed by: Cornwall Inshore Fisheries and Conservation Authority  
(Cornwall IFCA)

Authors: Annie Jenkin, Colin Trundle and Hilary Naylor.

<b>Document History</b>			
Version	Date	Author	Change
0.1	01/03/2018	A Jenkin	Initial draft
0.2	11/07/2018	C Trundle	QA
0.3	12/072018	A Jenkin	Amendments – final version

Cited as:

Jenkin, A, Trundle, C. and Naylor, H. 2017. Eddystone Reefs Drop Down Video Survey Field Report. Cornwall Inshore Fisheries and Conservation Authority (Cornwall IFCA), Hayle.

This document has been produced by Cornwall Inshore Fisheries and Conservation Authority (Cornwall IFCA)

Cornwall IFCA  
Chi Gallos  
Hayle Marine Renewables Business Park  
North Quay  
Hayle  
Cornwall  
TR27 4DD  
Tel: 01736 336842  
Email:enquiries@cornwall-ifca.gov.uk

## Contents

<b>List of Figures.....</b>	<b>iii</b>
<b>List of Tables.....</b>	<b>iii</b>
<b>1 Project Background .....</b>	<b>1</b>
1.1 Aims and objectives .....	2
1.1.1 Aims .....	2
1.1.2 Objectives .....	2
<b>2 Methodology .....</b>	<b>2</b>
2.1 Survey Area .....	2
2.2 Vessel Specifications .....	3
2.3 Personnel .....	3
2.4 Personal Protective Equipment (PPE) .....	3
2.5 Drop Down Video (DDV) Survey .....	4
2.5.1 Equipment Specification .....	4
2.5.2 Methodology .....	5
2.5.3 Data handling.....	5
<b>3 Results.....</b>	<b>3</b>
3.1 Drop Down Video (DDV) .....	3
3.2 Site descriptions.....	5
3.3 Anthropogenic Impacts.....	20
<b>4 Discussion.....</b>	<b>20</b>
<b>5 Appendices .....</b>	<b>21</b>
Annex 1 – R/V Tiger Lily Deck Plan & Offsets .....	21
Annex 2 – Daily Log .....	23
Annex 3 – Video position data from the Eddystone Reef Project in 2016 .....	25
Annex 4 – Still image position data from the Eddystone Reef Project in 2016.....	26

## List of Figures

Figure 1: Location of the three survey boxes; Box 1: Treatment, Box 2: Near Control and Box 3: Far Control used in the Eddystone Reefs Project survey.....	1
Figure 2: The survey area in the Eddystone .....	2
Figure 3: Cornwall IFCA’s dedicated survey vessel, R/V Tiger Lily VI. ....	3
Figure 4: SeaSpyder drop camera housed in a purpose built frame on the aft deck and in the deployment position onboard R/V Tiger Lily VI.....	4
Figure 5: The locations of the still images taken during the Eddystone Reefs Project 2017 within three survey areas; Box 1: Treatment, Box 2: Near Control and Box 3: Far Control. ....	4
Figure 6: The location of still images taken during a survey carried out by Cornwall IFCA within Box 1 of the Eddystone reef project 2017 .....	6
Figure 7: Station overview for Box 1 Tow 1 from the Cornwall IFCA Eddystone Reefs Project 2017 displaying still image locations overlaid on to side-scan sonar mosaic with descriptions of the habitat and fauna .....	7
Figure 8: Station overview for Box 1 Tow 2 from the Cornwall IFCA Eddystone Reefs Project 2017 displaying still image locations overlaid on to side-scan sonar mosaic with descriptions of the habitat and fauna .....	8
Figure 9: Station overview for Box 1 Tow 3 from the Cornwall IFCA Eddystone Reefs Project 2017 displaying still image locations overlaid on to side-scan sonar mosaic with descriptions of the habitat and fauna .....	9
Figure 10: Station overview for Box 1 Tow 4 from the Cornwall IFCA Eddystone Reefs Project 2017 displaying still image locations overlaid on to side-scan sonar mosaic with descriptions of the habitat and fauna .....	10
Figure 11: The location of still images taken during a survey carried out by Cornwall IFCA within Box 2 of the Eddystone reef project 2017 .....	11
Figure 12: Station overview for Box 2 Tow 1 and Tow 1A from the Cornwall IFCA Eddystone Reefs Project 2017 displaying still image locations overlaid on to side-scan sonar mosaic with descriptions of the habitat and fauna....	12
Figure 13: Station overview for Box 2 Tow 2 from the Cornwall IFCA Eddystone Reefs Project 2017 displaying still image locations overlaid on to side-scan sonar mosaic with descriptions of the habitat and fauna .....	13
Figure 14: Station overview for Box 2 Tow 3 from the Cornwall IFCA Eddystone Reefs Project 2017 displaying still image locations overlaid on to side-scan sonar mosaic with descriptions of the habitat and fauna .....	14
Figure 15: Station overview for Box 2 Tow 4 from the Cornwall IFCA Eddystone Reefs Project 2017 displaying still image locations overlaid on to side-scan sonar mosaic with descriptions of the habitat and fauna .....	15
Figure 16: The location of still images taken during a survey carried out by Cornwall IFCA within Box 3 of the Eddystone reef project 2017 .....	16
Figure 17: Station overview for Box 3 Tow 1 from the Cornwall IFCA Eddystone Reefs Project 2017 displaying still image locations overlaid on to side-scan sonar mosaic with descriptions of the habitat and fauna .....	17
Figure 18: Station overview for Box 3 Tow 2 from the Cornwall IFCA Eddystone Reefs Project 2017 displaying still image locations overlaid on to side-scan sonar mosaic with descriptions of the habitat and fauna .....	18
Figure 19: Station overview for Box 3 Tow 3 from the Cornwall IFCA Eddystone Reefs Project 2017 displaying still image locations overlaid on to side-scan sonar mosaic with descriptions of the habitat and fauna .....	19

## List of Tables

Table 1: The camera equipment specifications.....	4
Table 2: Daily log from survey carried on board R/V Tiger Lily on 4 <sup>th</sup> July 2017 .....	23
Table 3: Daily log from survey carried on board R/V Tiger Lily on 4 <sup>th</sup> July 2017 .....	24

## Glossary of terms and abbreviations

Anthropogenic	Produced or caused by human activity
DDV	Drop down video
IFCA	Inshore Fisheries and Conservation Authority
SAC	Special Area of Conservation
SSS	Side-scan sonar
UTC	Coordinated Universal Time

## 1 Project Background

Cornwall Inshore Fisheries and Conservation Authority (Cornwall IFCA), the Marine Conservation Society (MCS) and the University of Exeter Environment Sustainability Institute (ESI), are collaborating on a study in the Eddystone reefs, part of the Start Point to Plymouth Sound and Eddystone Special Area of Conservation (SAC). The project was funded by the Pigshed Trust between 2014 and 2016 and Princess Yachts International of Plymouth have committed to fund the project from 2017 to 2019.

The aim of this study is to collect data to enable a comparison of the epifaunal assemblages by statistical analysis within areas that are open and closed to bottom towed gear over time. The closure is a result of the European Marine Site management measures that were introduced in January 2014. The work carried out in 2017 was the fourth year of the study and replicated the previous year's data collection. The data was from one treatment area that is within an area closed to bottom towed gears (Box 1) and two control areas where towed gears are allowed (Boxes 2 and 3) (Figure 1). Box 2 is close to the treatment area and Box 3 is further away. All sites were selected due to their similarity; they all have similar bathymetry, reef to the western side and have all been/are subject to towed gears.

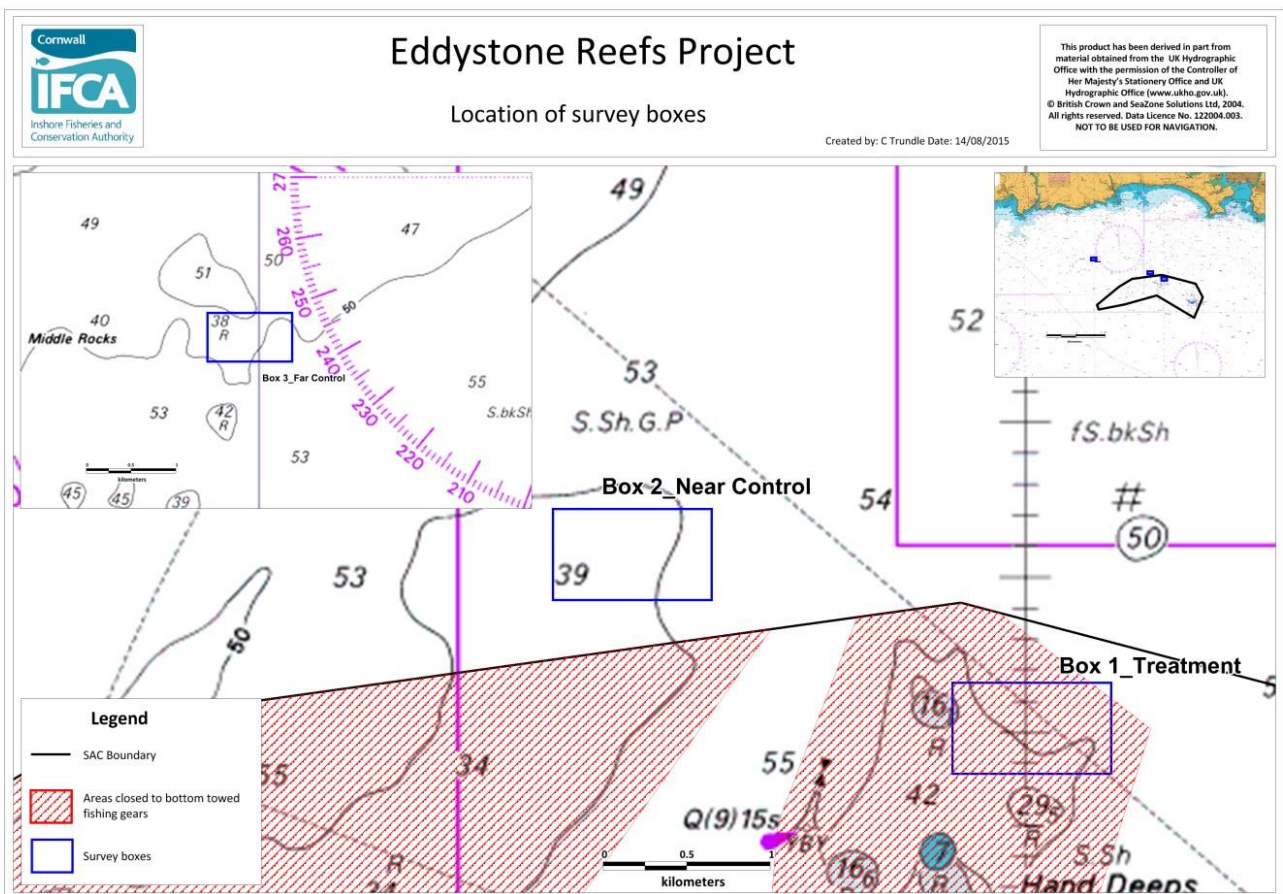


Figure 1: Location of the three survey boxes; Box 1: Treatment, Box 2: Near Control and Box 3: Far Control used in the Eddystone Reefs Project survey.

## 1.1 Aims and objectives

### 1.1.1 Aims

- Collect high quality video and still imagery from three survey boxes to enable a comparison of the epifaunal assemblage to be made following the ban of bottom towed fishing gear within one of the boxes.

### 1.1.2 Objectives

- Complete drop down video/stills survey using the mapping European seabed habitats (MESH), recommended operating guidelines for underwater video surveys.
- Repeat camera tows within the same boxes as carried out in 2014, 2015 and 2016.

## 2 Methodology

The survey was carried out in line with Mapping European Seabed Habitats (MESH) recommended operating guidelines for underwater video and photographic imaging techniques (Coggan *et al.*, 20017).

### 2.1 Survey Area

The location of the survey is shown in Figure 2.

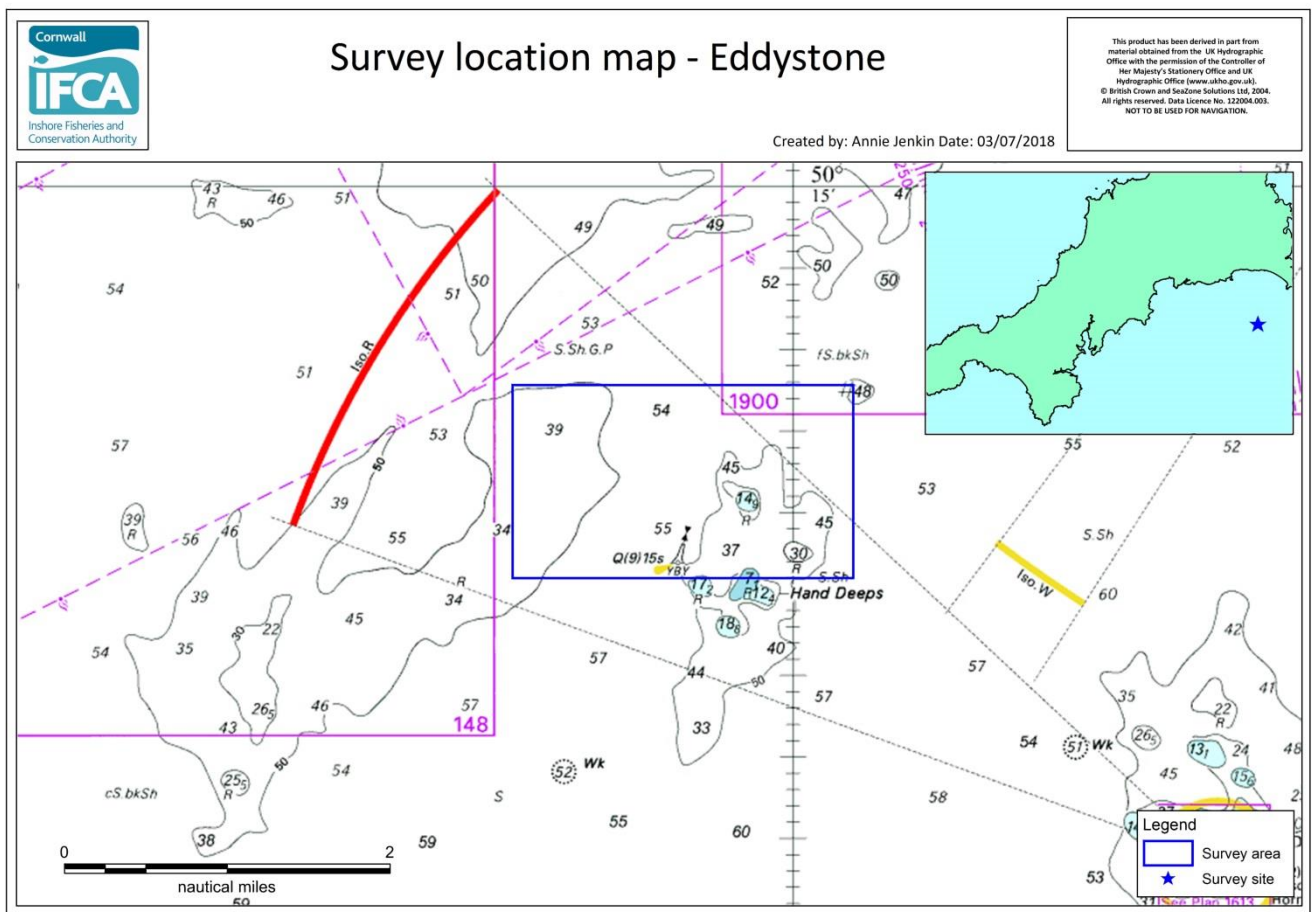


Figure 2: The survey area in the Eddystone

## 2.2 Vessel Specifications

The survey was undertaken from Cornwall IFCA's Research Vessel (R/V) Tiger Lily VI (Figure 3). This vessel has been refitted for survey work and includes a purpose built survey station within the wheelhouse (See Annex 1). R/V Tiger Lily VI has been fitted with an inverter and uninterruptable power supply (UPS) to provide stable 240 v power, NMEA outputs and a dedicated GPS with WAAS enabled. All position information was recorded in the Long/Lat WGS84 projection and taken from a single GPS (Furuno GP-32). All times are recorded as UTC and taken from the same source as the position data. The clocks on all of the data capture PCs were synched prior to departing the vessel's mooring.

Tiger Lily VI is an MCA coded Cat 2 vessel and is fitted with all necessary safety equipment including life rafts, first aid kits and fire suppression systems.



Figure 3: Cornwall IFCA's dedicated survey vessel, R/V Tiger Lily VI.

## 2.3 Personnel

The crew during the surveys consisted of the skipper and up to three scientific officers. The crew roles rotated during the surveys and roles included deploying and recovering the DDV unit, keeping a log and controlling the camera and video topside units.

## 2.4 Personal Protective Equipment (PPE)

Appropriate safety footwear and lifejackets with personal location beacons (PLBs) were worn at all times by members of the survey team whilst working on deck. Hard hats were worn during deployment and recovery of the DDV. There were no accidents or near misses reported.



## 2.5 Drop Down Video (DDV) Survey

### 2.5.1 Equipment Specification

The camera used for the DDV survey was an STR SeaSpyder drop camera system contained in a custom built frame, allowing high resolution stills of the seabed to be taken using a surface controlled digital SLR camera (Figure 4). Separate real time video, with user-programmable overlay, allows positional information, time, bearing and depth to be recorded on the video output. Details of the system are available online: <http://www.str-subsea.com/sales/str-SeaSpyder-drop-camera-system>.



Figure 4: SeaSpyder drop camera housed in a purpose built frame on the aft deck and in the deployment position onboard R/V Tiger Lily VI.

The camera equipment specifications are shown in Table 1.

Table 1: The camera equipment specifications

Equipment	Camera System
Manufacturer	SeaSpyder
Video	HD video 600 lines PAL
Stills	18 mega pixels
Trigger	Remote from deck
Height control	Video footage
Lighting	Four high density LED 20w lamps
Scale bar	4 Dual lasers for precise imagery scaling
Trigger	Remote from deck
Additional info	<ul style="list-style-type: none"> <li>• Full remote control of camera functions including automatic and manual focus control</li> <li>• 'On-the-fly' image download</li> <li>• High speed digital telemetry link to camera and sensors</li> <li>• High power underwater flash</li> </ul>

### 2.5.2 Methodology

The DDV survey was planned from the results of previous year surveys. Drift tows were planned within each of the survey boxes using previous survey positions which were loaded in to the Olex navigation plotter onboard the vessel.

Prior to the deployment of the SeaSpyder for each transect, the video text overlay was checked and adjusted to display the survey name and transect number (e.g. "20170704 Cornwall IFCA DDV\_'Site\_Location'\_ 'Station\_no.'\_'Tow\_no.'") and the GPS, heading and depth info was checked to ensure that it was updating correctly. The SeaSpyder camera was deployed from the starboard side davit of R/V Tiger Lily VI (see Annex 1) and lowered to the seabed. The video was set to record once the camera was on the seabed. A waypoint (mark) was created in OLEX to indicate the start of line (SOL) this was repeated at the end of line (EOL). The SeaSpyder was 'flown' with the frame legs just above the seabed and periodically landed on the seabed to allow a high quality still image to be taken. Still images were captured at a frequency of one every 60 seconds; images separation varied slightly to ensure that the stills taken were of good quality (e.g. taken when the frame was stable and the lens unobstructed) this sometimes led to a delay. Immediately upon having captured a stills image a waypoint (mark) was created in OLEX.

### 2.5.3 Data handling

OLEX navigation software was used to record the vessels track and waypoints/marks at the start and end of each transect and at the location of every stills image. These were transferred out of OLEX in .gz file format. The file was then extracted using 7-Zip (7-Zip V9.20) enabling it to be converted using OLEX to GPSU File Converter (OLEX to GPSU File Converter V1.05). The file could then be converted to a .txt file using Notepad. Once opened in Excel, the file had all irrelevant header data removed and appropriate field headers added. Once completed, the Excel file was transferred to the GI software and data points were created to show the position of each still image.

Stills images from the SeaSpyder camera were initially stored on the internal computer (sub-surface), then on completion of each transect, the still images were transferred to the SeaSpyder topside control unit using FileZilla and filed by transect number.

Video files were captured to the SeaSpyder topside unit data drive (D:).

The stills and video files were transferred from the topside unit to a WD Passport for transport and storage.

## 3 Results

### 3.1 Drop Down Video (DDV)

The survey was carried out over two days, the 4<sup>th</sup> July 2017 and the 25<sup>th</sup> August 2017. The daily log for survey operations is shown in Annex 2. High quality video data and stills were obtained across all transects within the three survey boxes. A summary of the video data collected during the DDV survey for the Eddystone is shown in Annex 3 and the position information for the stills images is shown in Annex 4.

During the survey day on the 4<sup>th</sup> July 2017 the camera flash stopped working at the end of the third tow. The problem could not be solved at sea so Tiger Lily returned to Mylor. During the survey day on the 25<sup>th</sup> August 2017 the camera froze during three of the tows and comms between the camera and the topside unit was lost during these episodes.

The location of the still images within the three survey boxes is shown in Figure 5.

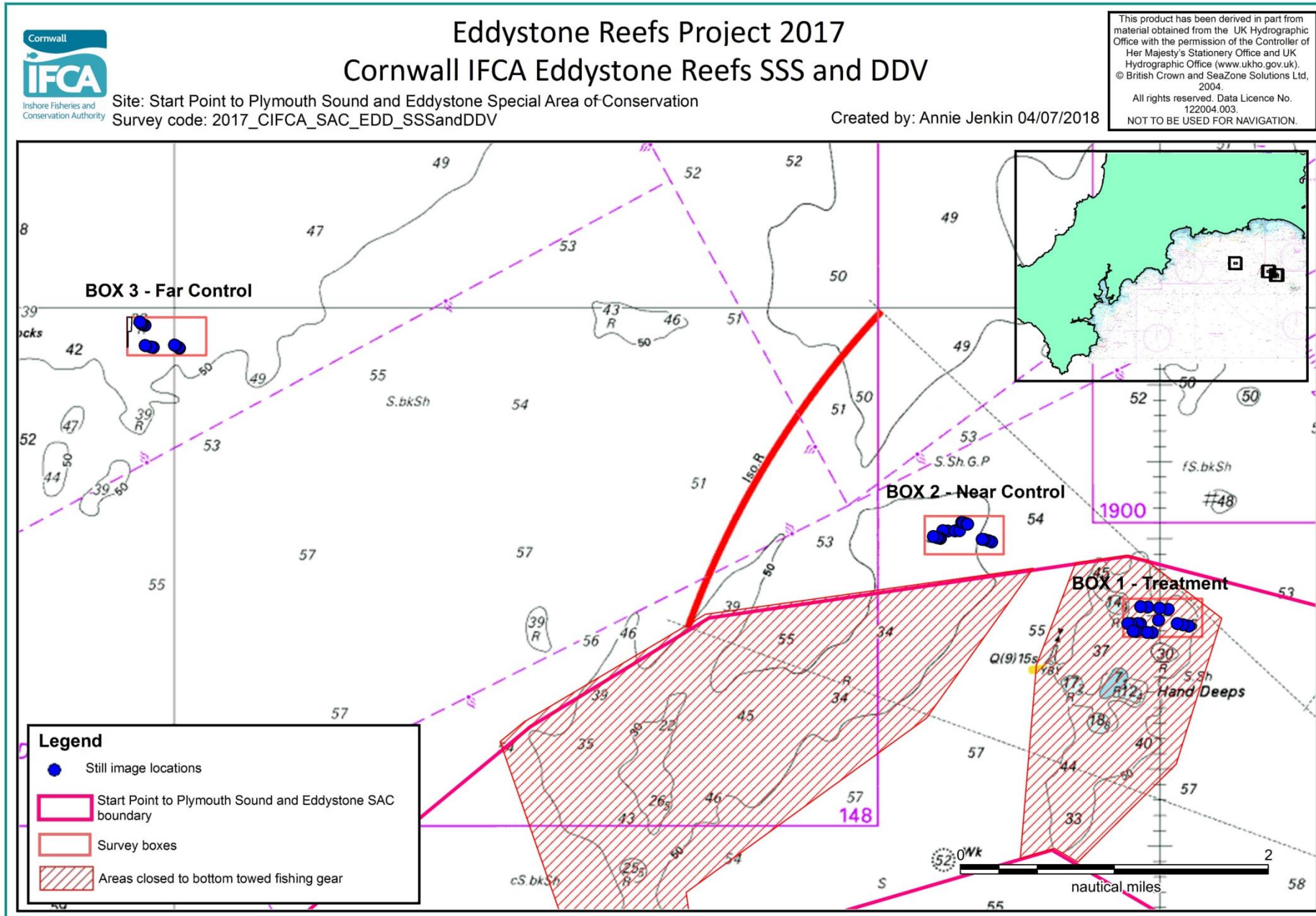


Figure 5: The locations of the still images taken during the Eddystone Reefs Project 2017 within three survey areas; Box 1: Treatment, Box 2: Near Control and Box 3: Far Control.

### 3.2 Site descriptions

All three survey areas were dominated by large areas of coarse sediment with pebbles and cobbles and smaller areas of bedrock/ reef. The Udden-Wentworth scales was used for sediment descriptions.

A number of conspicuous fauna were observed on the reef habitat including dead man's fingers (*Alcyonium digitatum*), pink sea fans (*Eunicella verrucosa*), spiny starfish (*Marthasterias glacialis*), cup corals (*Caryophyllia smithii*), common urchin (*Echinus esculentus*) and sponges including the yellow boring sponge (*Cliona celata*). Fauna which was recorded in the coarse sediment waves were king scallops (*Pecten maximus*), queen scallops (*Aequipecten opercularis*), polychaete tubes, hydroids, hermit crab (*Pagurus bernhardus*).

An overview of each tow including the SSS mosaic with the position of the still images overlain and four representative for each tow are shown below for each box. The position of each transect within Box 1 is shown in Figure 6, Box 2 in Figure 11 and Box 3 in Figure 16. An overview of each site including SSS, representative still images and habitat classification is shown in Figure 7 to Figure 10 for Box 1, Figure 12 to Figure 15 for Box 2 and Figure 17 to Figure 19 for Box 3.

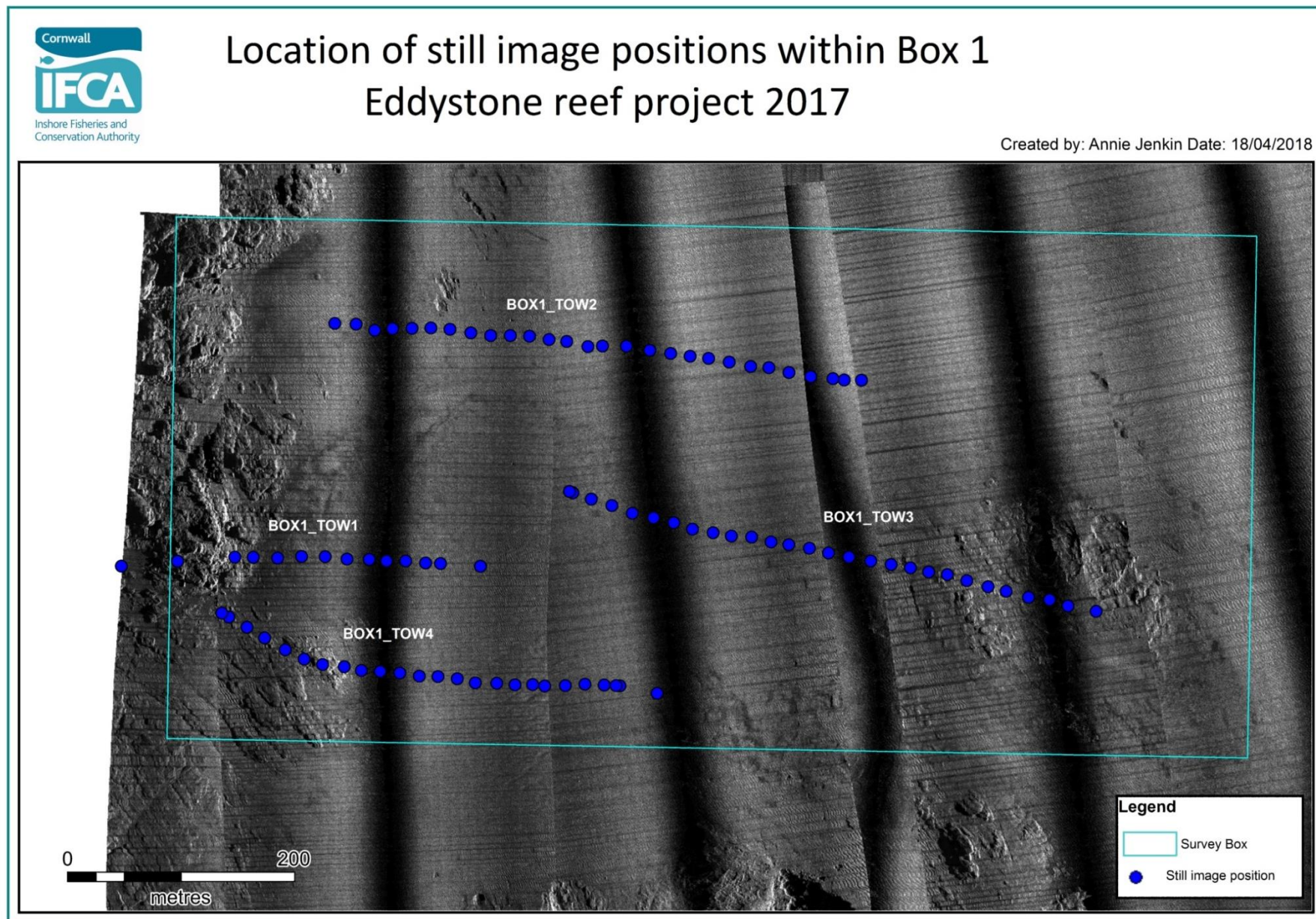


Figure 6: The location of still images taken during a survey carried out by Cornwall IFCA within Box 1 of the Eddystone reef project 2017

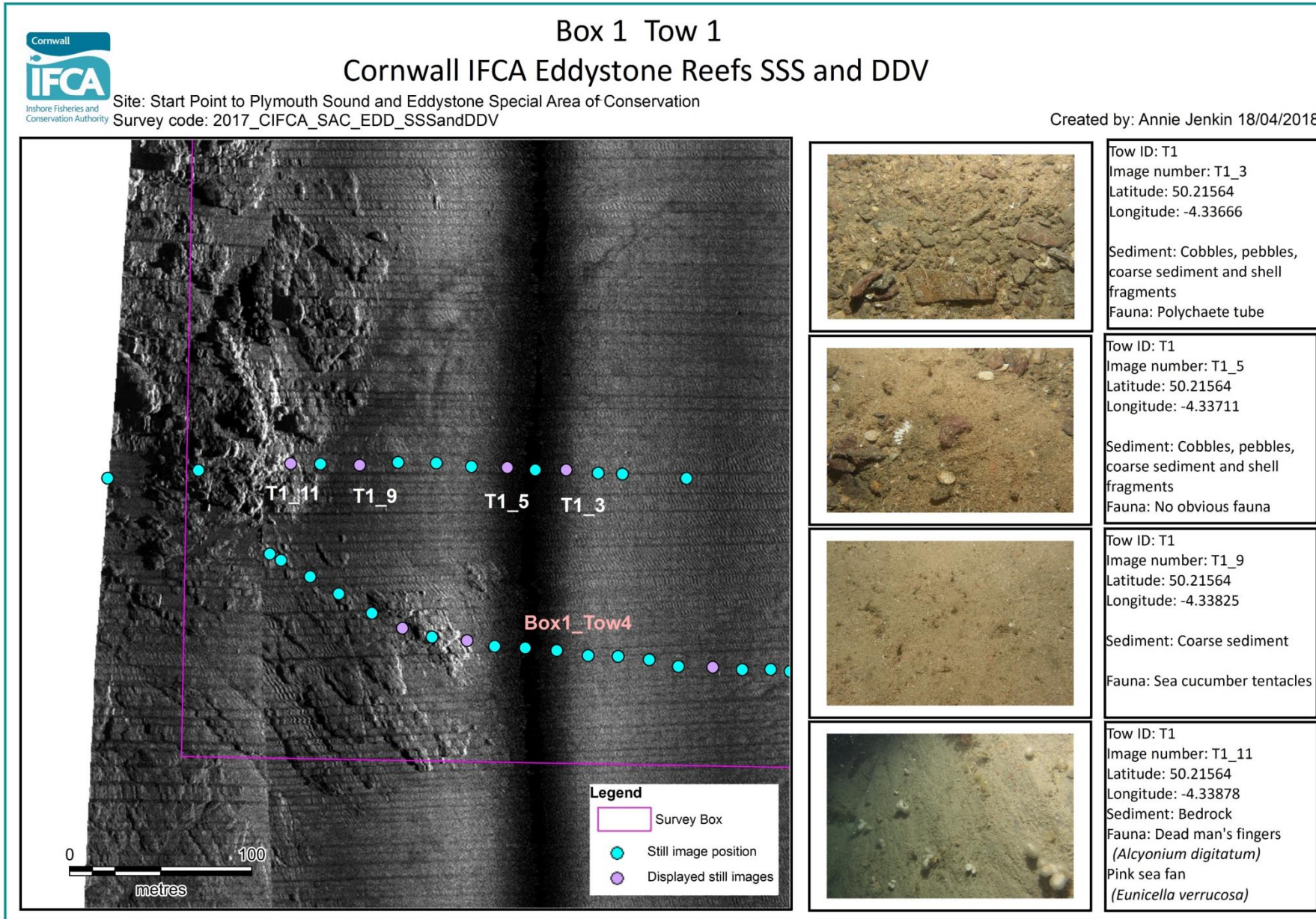


Figure 7: Station overview for Box 1 Tow 1 from the Cornwall IFCA Eddystone Reefs Project 2017 displaying still image locations overlaid on to side-scan sonar mosaic with descriptions of the habitat and fauna

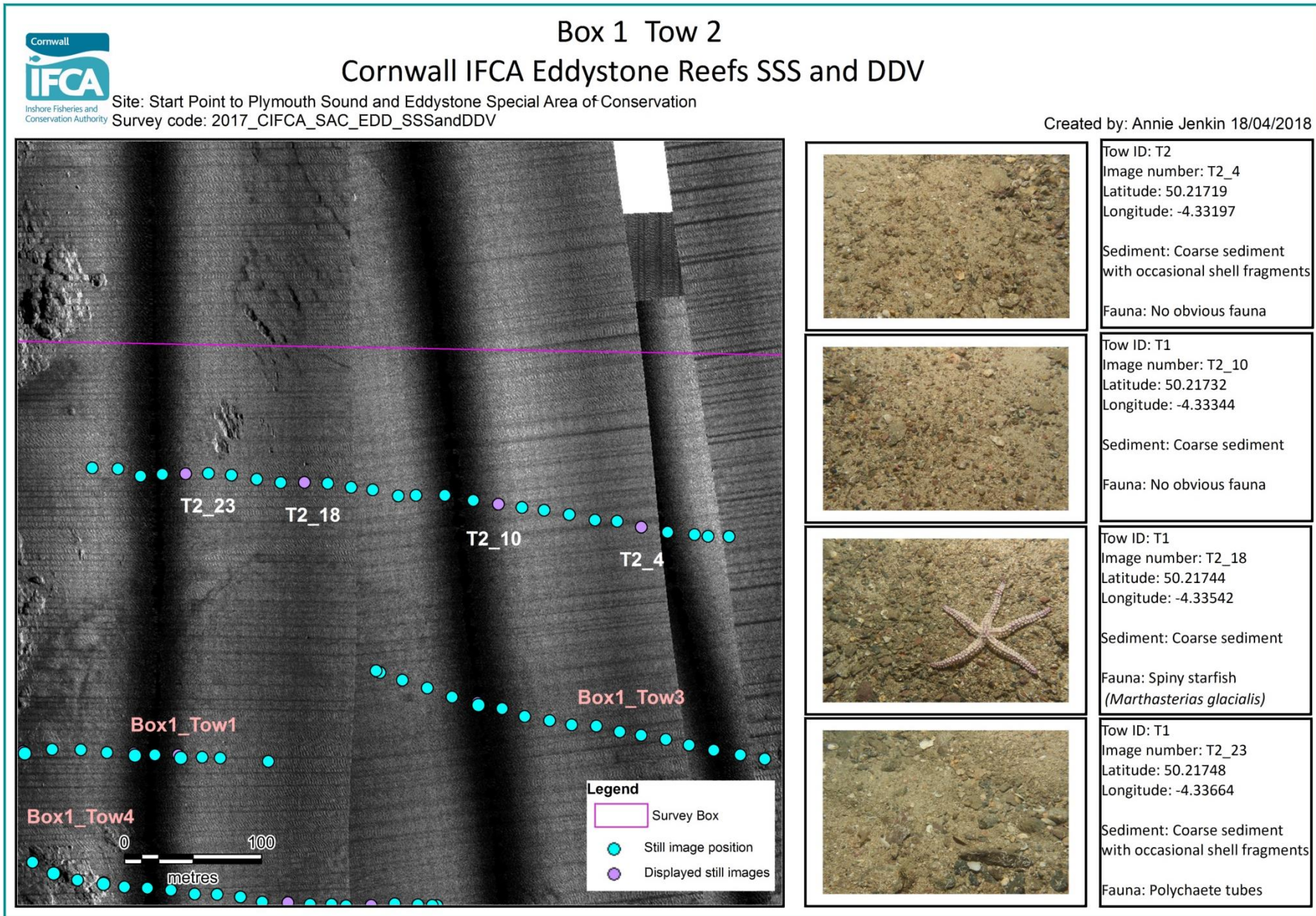


Figure 8: Station overview for Box 1 Tow 2 from the Cornwall IFCA Eddystone Reefs Project 2017 displaying still image locations overlaid on to side-scan sonar mosaic with descriptions of the habitat and fauna



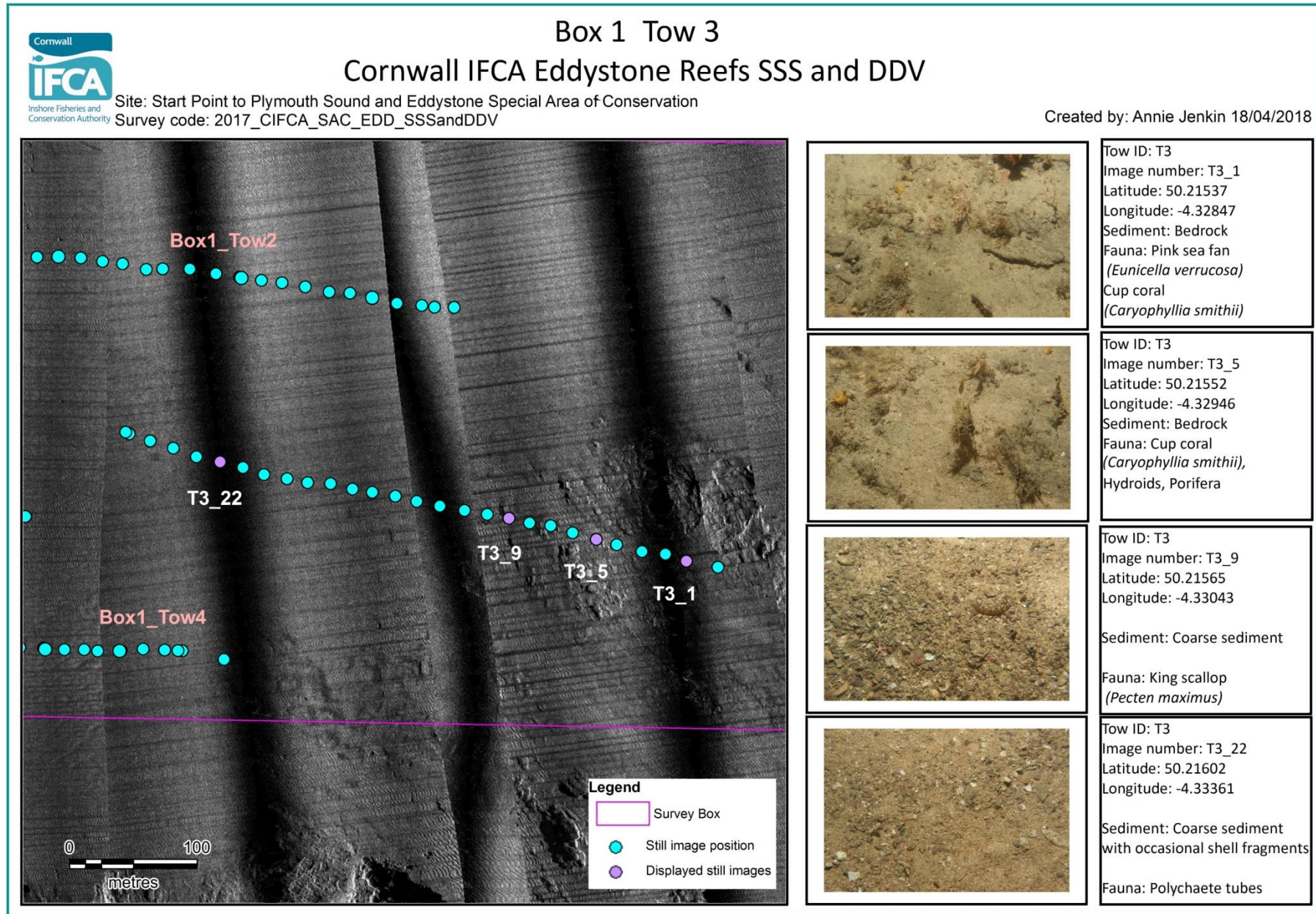


Figure 9: Station overview for Box 1 Tow 3 from the Cornwall IFCA Eddystone Reefs Project 2017 displaying still image locations overlaid on to side-scan sonar mosaic with descriptions of the habitat and fauna

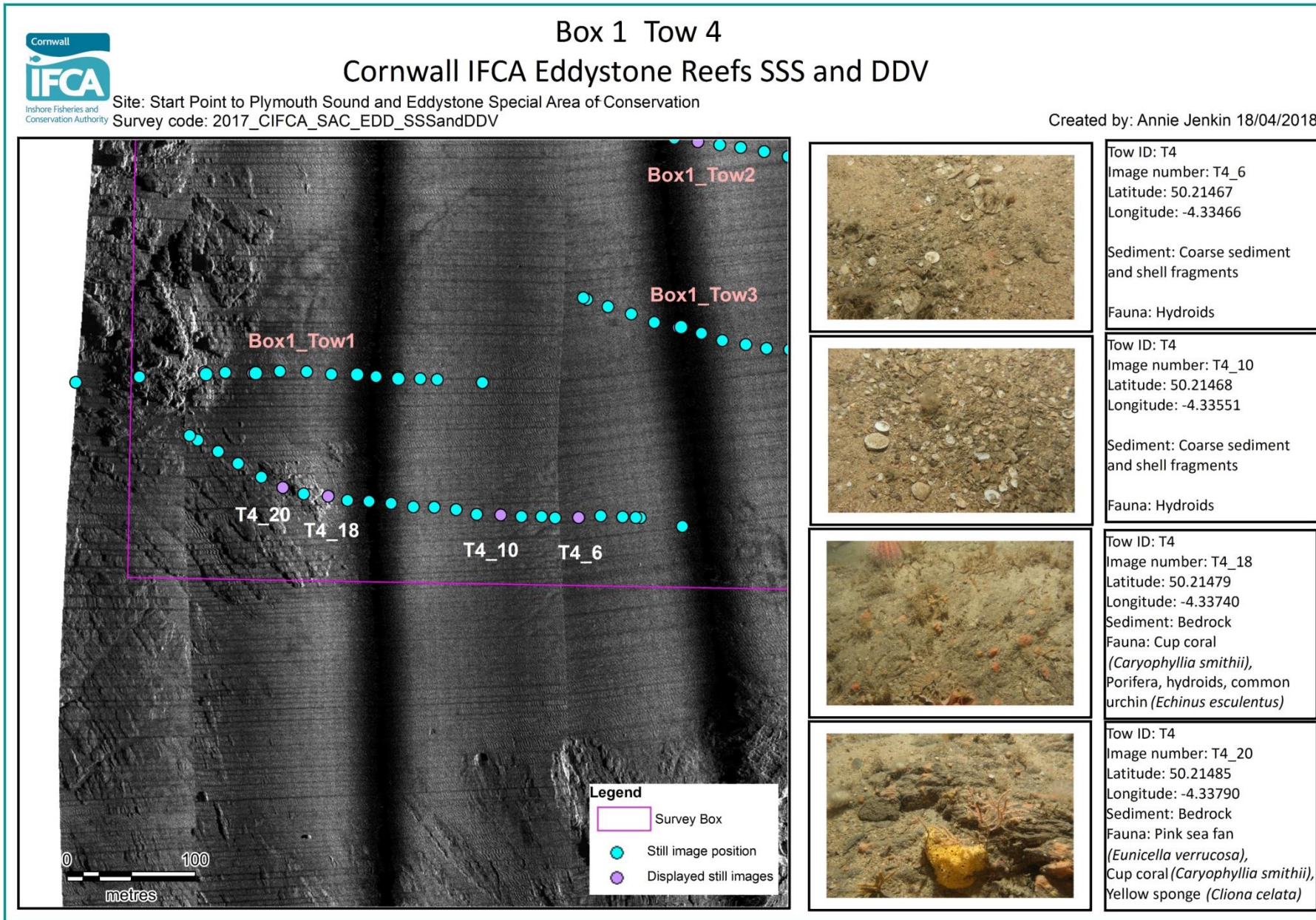


Figure 10: Station overview for Box 1 Tow 4 from the Cornwall IFCA Eddystone Reefs Project 2017 displaying still image locations overlaid on to side-scan sonar mosaic with descriptions of the habitat and fauna



# Location of still image positions within Box 2 Eddystone Reef Project 2017

Created by: Annie Jenkin Date: 19/04/2018

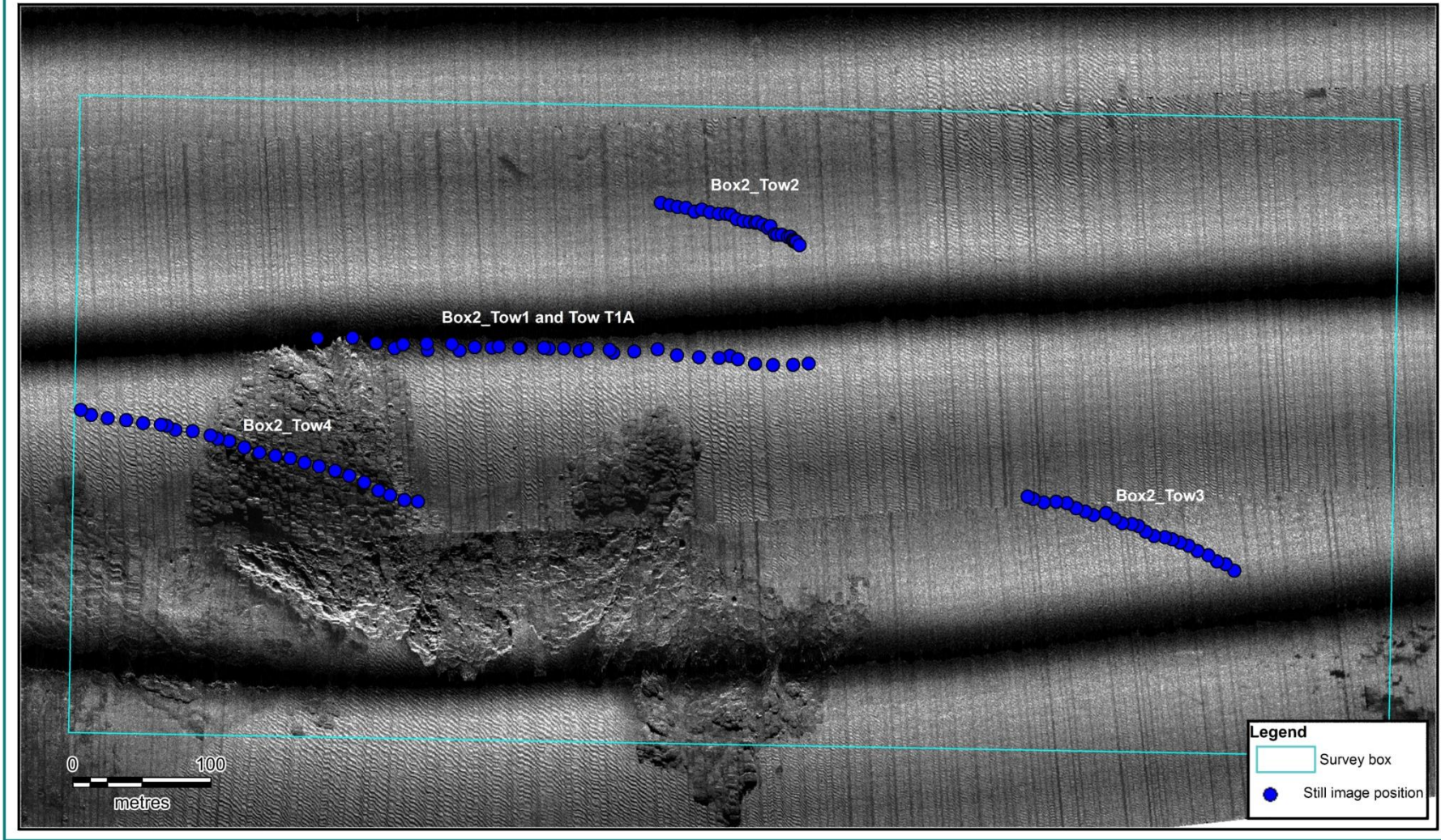


Figure 11: The location of still images taken during a survey carried out by Cornwall IFCA within Box 2 of the Eddystone reef project 2017

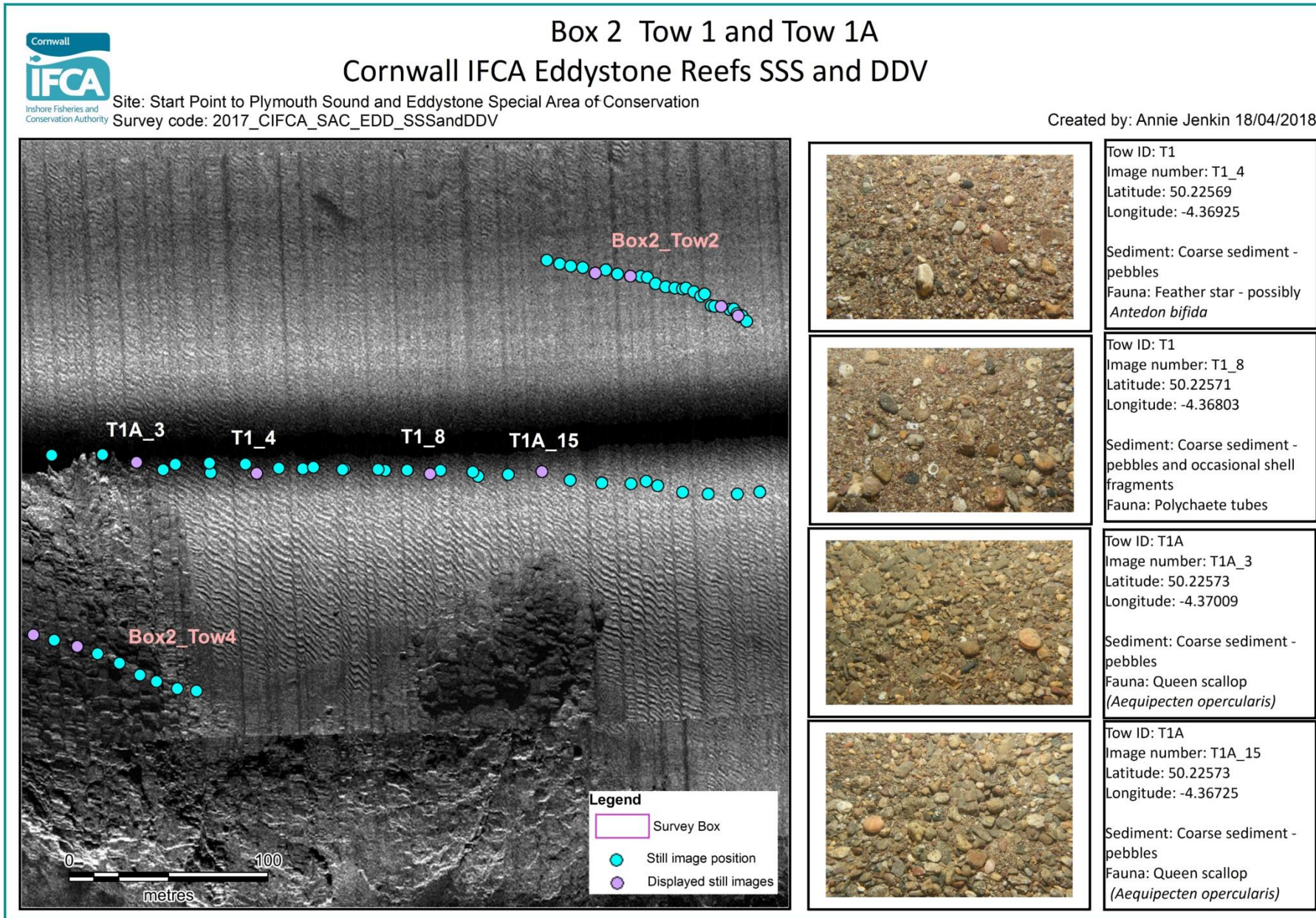


Figure 12: Station overview for Box 2 Tow 1 and Tow 1A from the Cornwall IFCA Eddystone Reefs Project 2017 displaying still image locations overlaid on to side-scan sonar mosaic with descriptions of the habitat and fauna

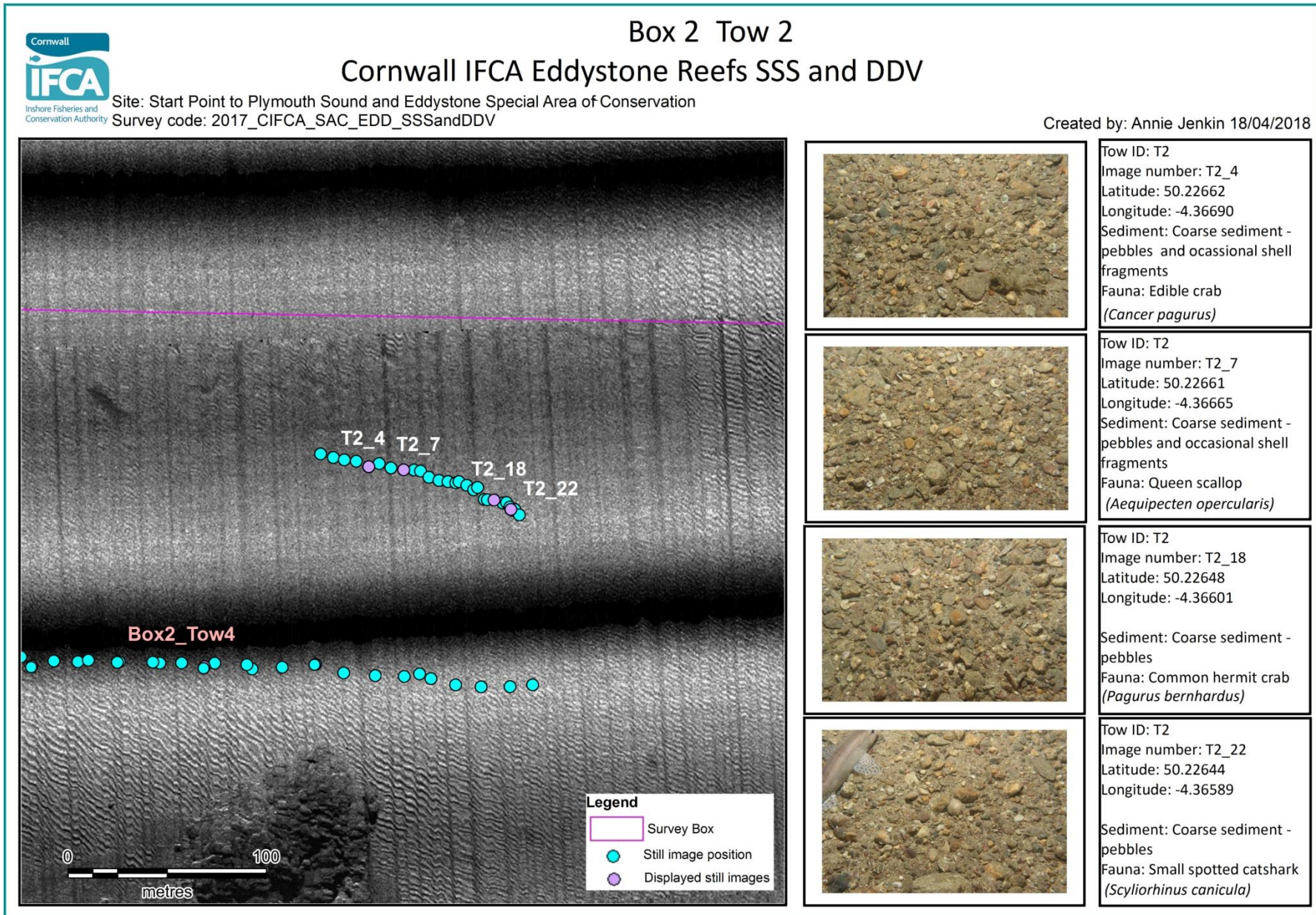


Figure 13: Station overview for Box 2 Tow 2 from the Cornwall IFCA Eddystone Reefs Project 2017 displaying still image locations overlaid on to side-scan sonar mosaic with descriptions of the habitat and fauna

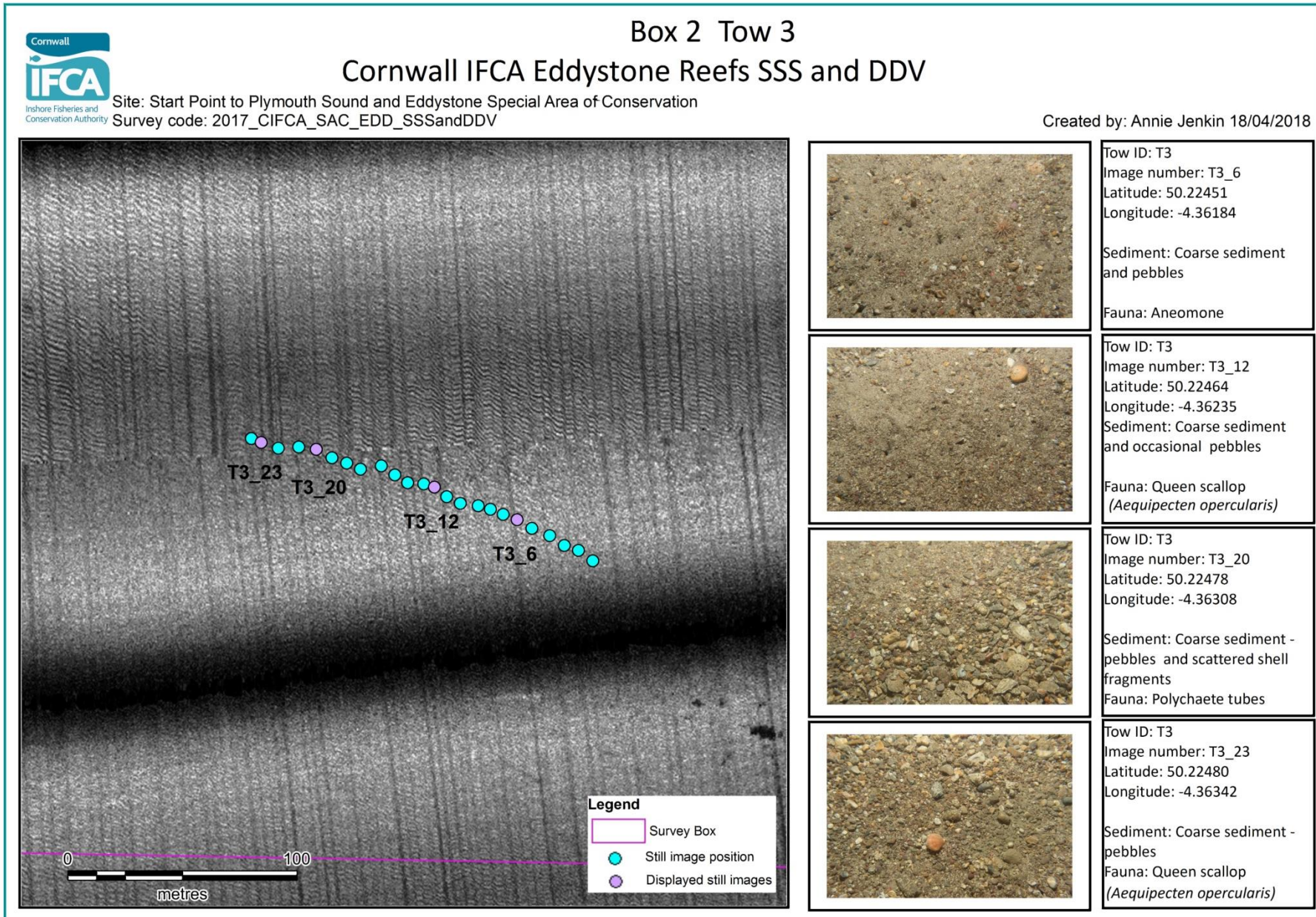


Figure 14: Station overview for Box 2 Tow 3 from the Cornwall IFCA Eddystone Reefs Project 2017 displaying still image locations overlaid on to side-scan sonar mosaic with descriptions of the habitat and fauna

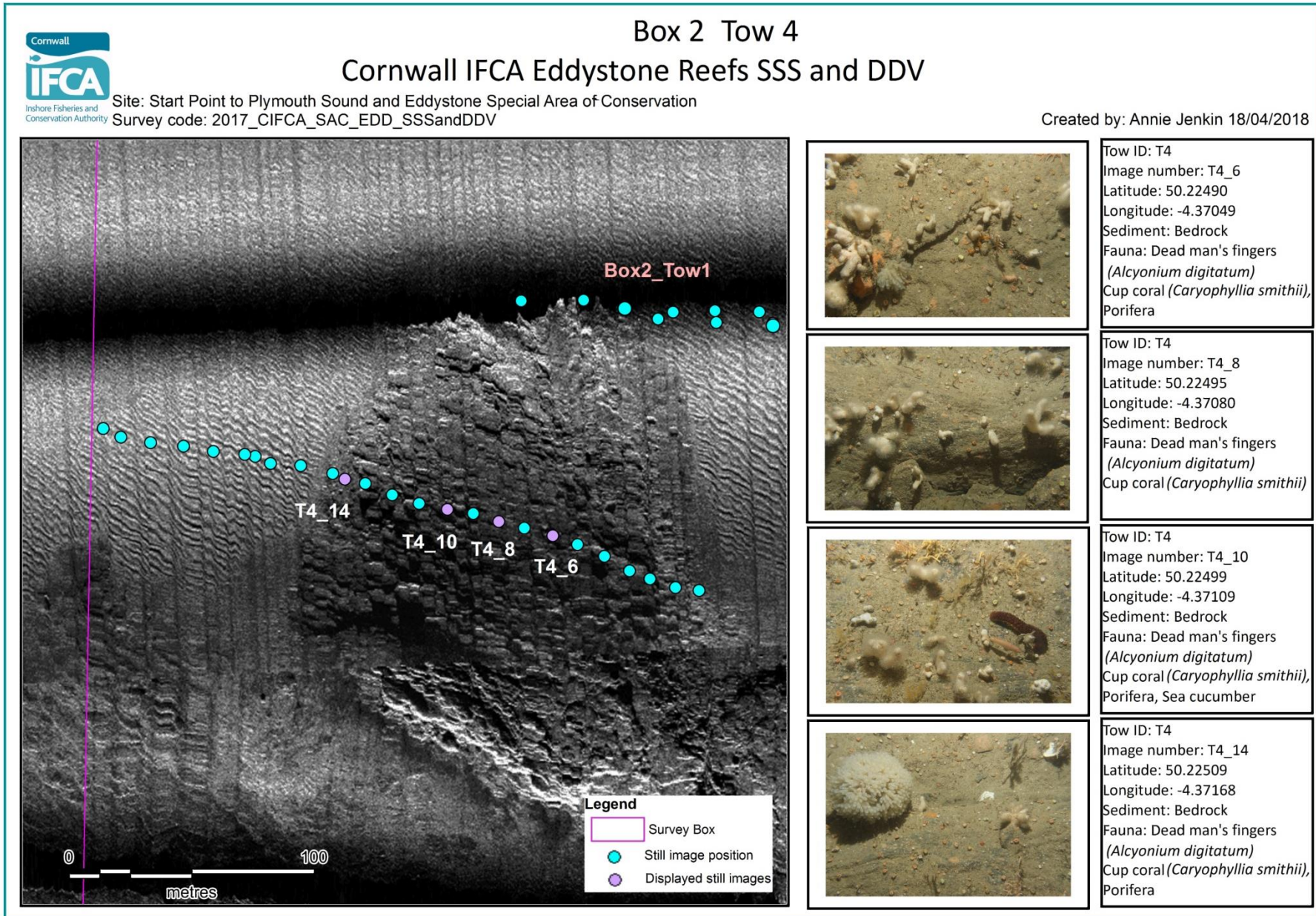


Figure 15: Station overview for Box 2 Tow 4 from the Cornwall IFCA Eddystone Reefs Project 2017 displaying still image locations overlaid on to side-scan sonar mosaic with descriptions of the habitat and fauna



# Location of still image positions within Box 3 Eddystone reef project 2017

Created by: Annie Jenkin Date: 18/04/2018

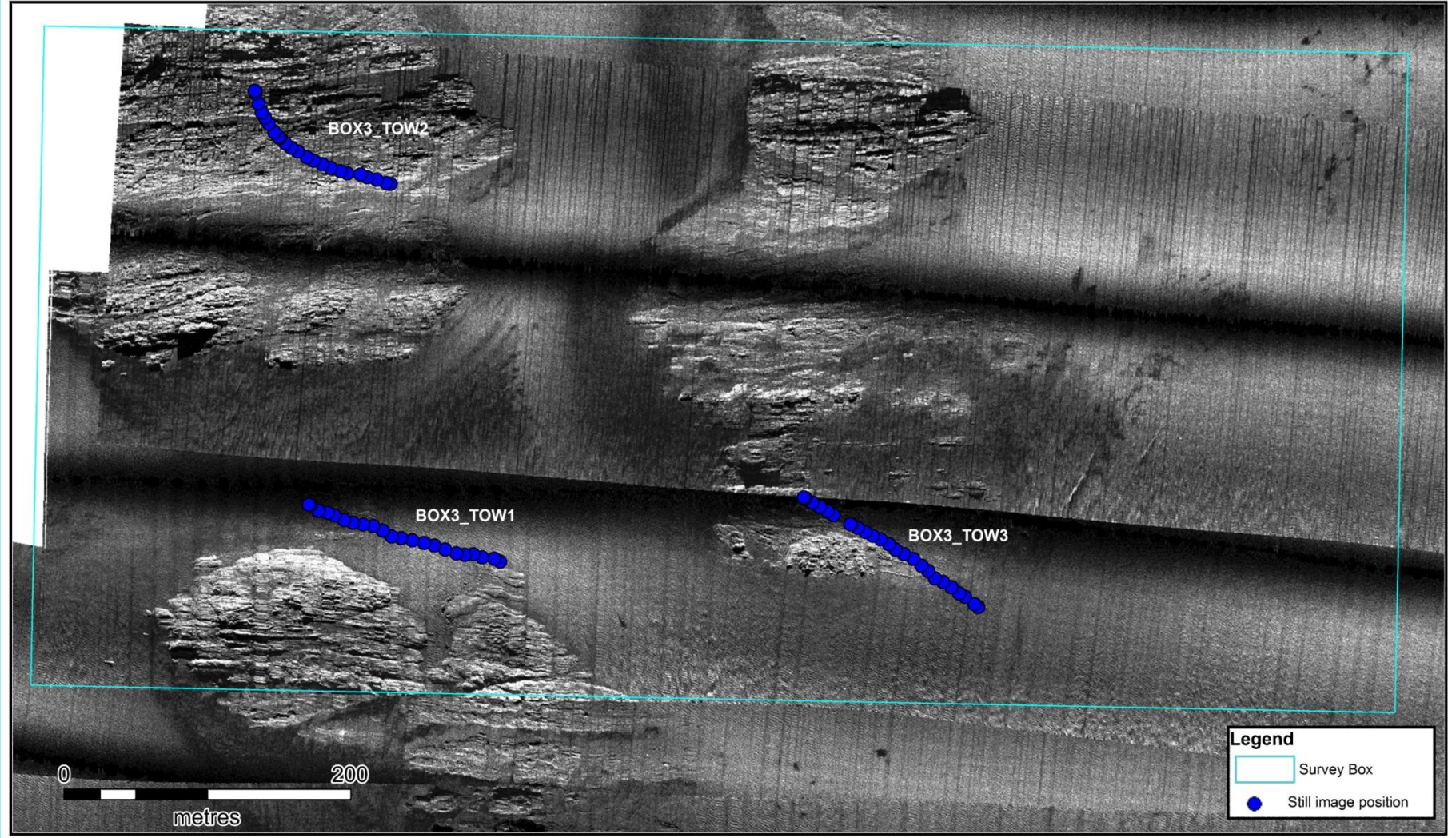


Figure 16: The location of still images taken during a survey carried out by Cornwall IFCA within Box 3 of the Eddystone reef project 2017



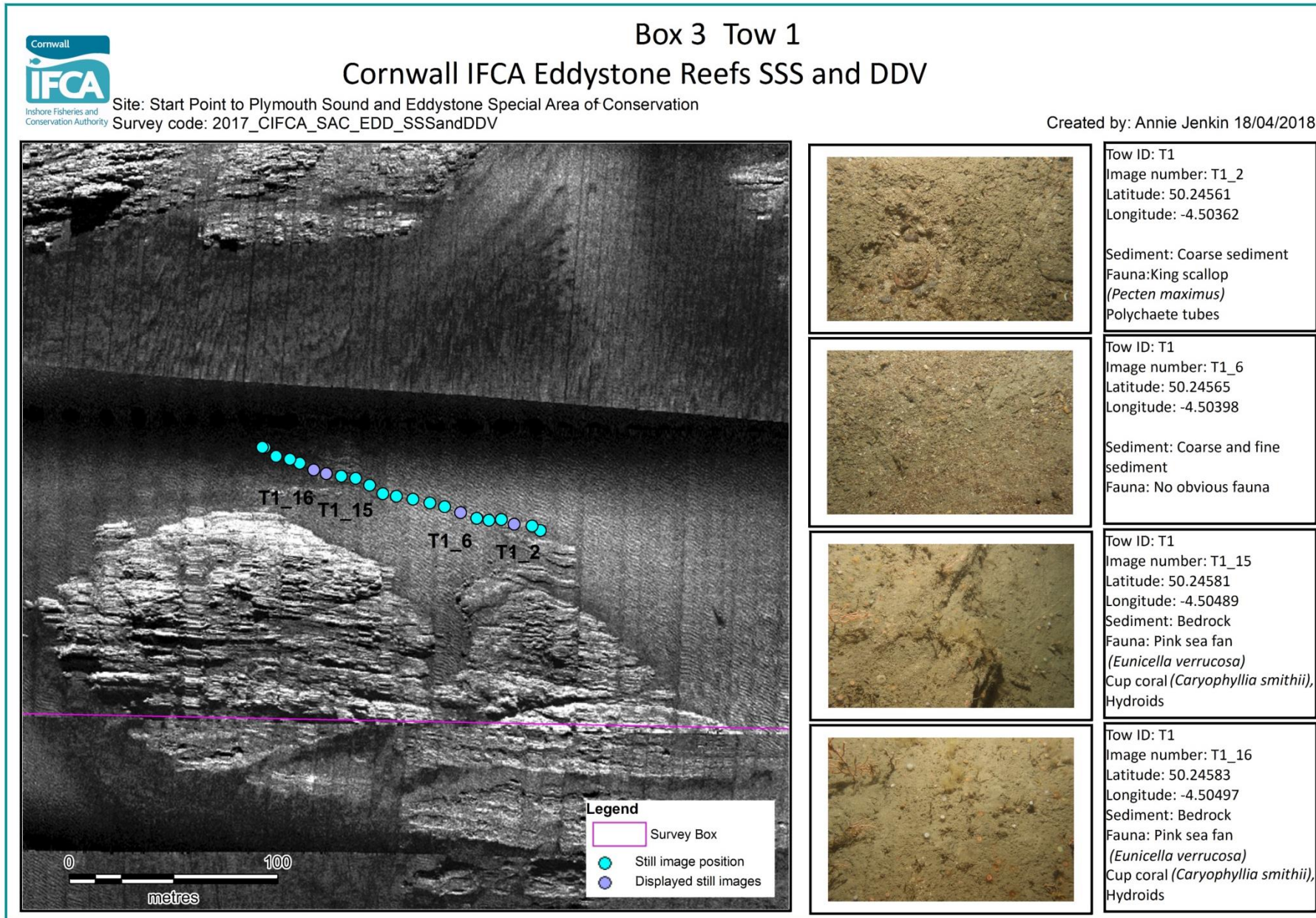


Figure 17: Station overview for Box 3 Tow 1 from the Cornwall IFCA Eddystone Reefs Project 2017 displaying still image locations overlaid on to side-scan sonar mosaic with descriptions of the habitat and fauna

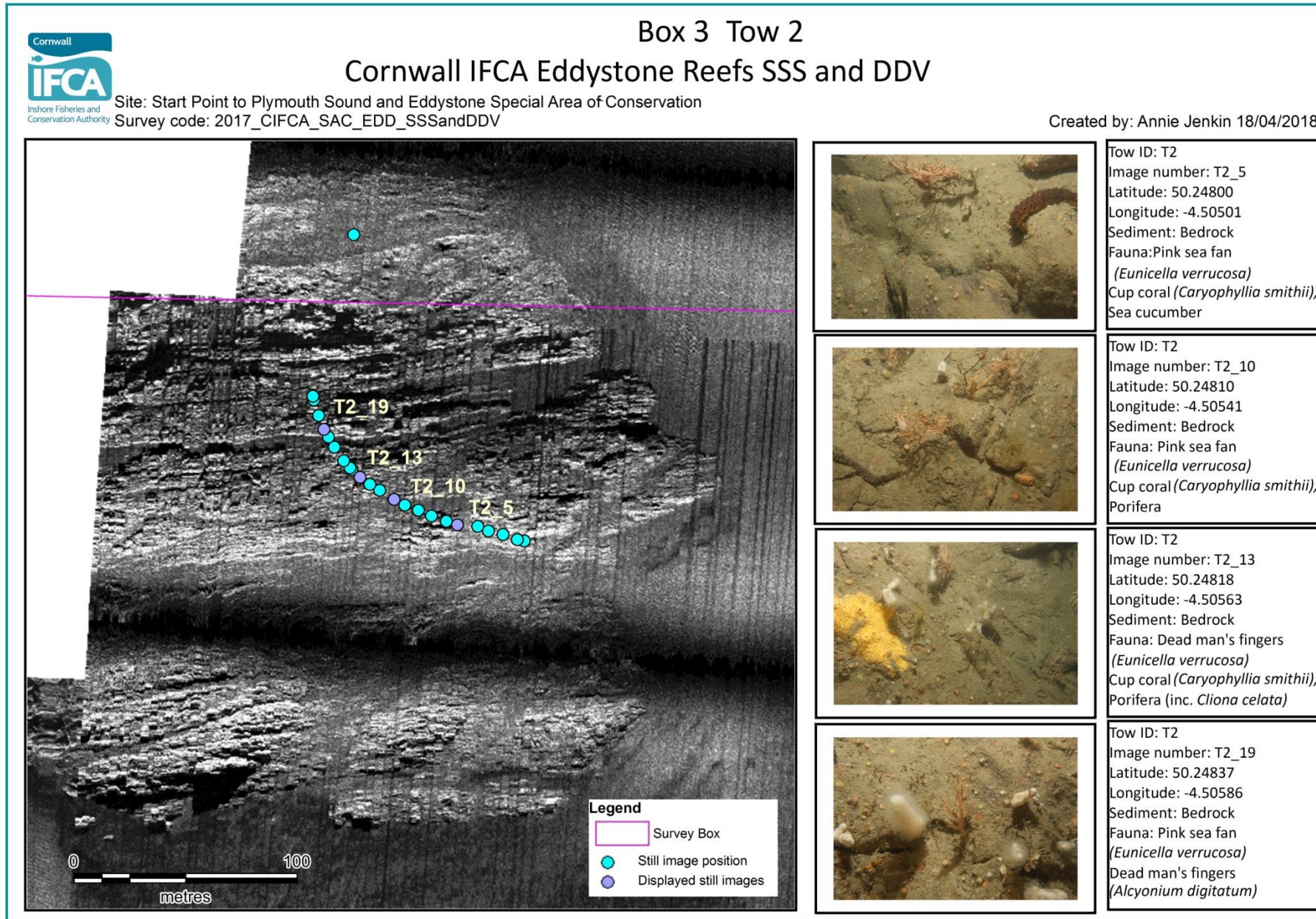


Figure 18: Station overview for Box 3 Tow 2 from the Cornwall IFCA Eddystone Reefs Project 2017 displaying still image locations overlaid on to side-scan sonar mosaic with descriptions of the habitat and fauna

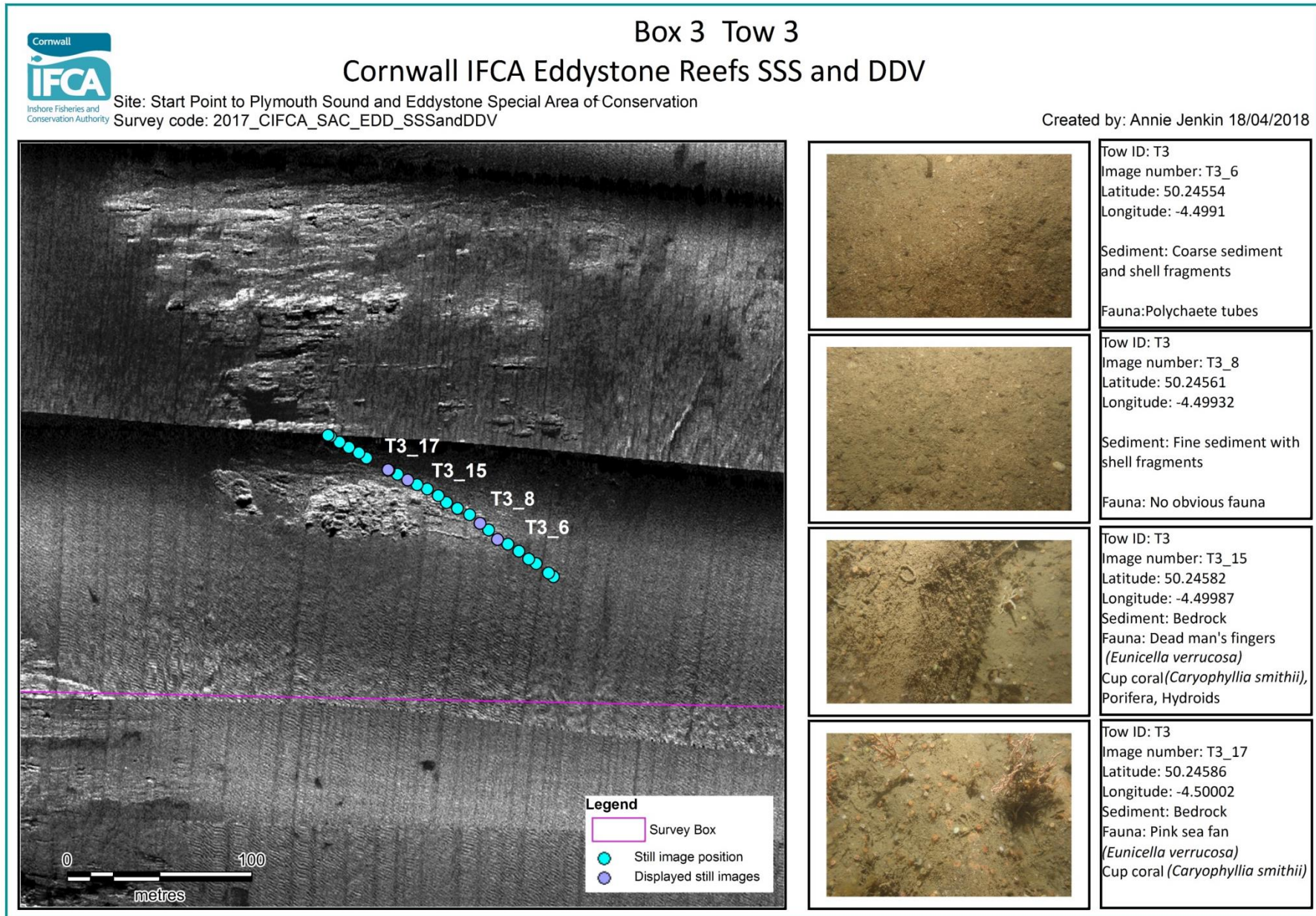


Figure 19: Station overview for Box 3 Tow 3 from the Cornwall IFCA Eddystone Reefs Project 2017 displaying still image locations overlaid on to side-scan sonar mosaic with descriptions of the habitat and fauna

### 3.3 Anthropogenic Impacts

On the 25<sup>th</sup> August 2017, rope from fishing gear was recorded during Box 2\_T4 and the camera got caught on a string on pots at the end of Box 2\_T2.

## 4 Discussion

Cornwall IFCA has been collecting data as part of the Eddystone reefs project since 2014 and the data collected in 2017 will be added to the database of images for this survey area to enable a comparison of the seabed community composition to be done.

### **Box 1**

Three of the tows in Box 1 covered the transition from the sediment composed of fine to coarse sediment with the presence of shell fragments to areas of reef. The most northerly tow crossed over coarse sediment and no reef.

### **Box 2**

The sediment in Box 2 is composed of coarser material including cobbles, pebbles and shell fragments with less fine material present. Areas of rock and reef are present.

### **Box 3**

The sediment present in Box 3 is similar to that of Box 1. The sediment is composed of a mosaic of fine sediment to coarse sediment with the presence of shell fragments.

Preliminary results show that Boxes 1 and 3 are fairly similar with a mosaic of sediment, pebble, cobble, shell with rock and reef features present. Box 2 differs slightly from the other two boxes as the mosaic is composed of coarser sediment of medium/ coarse cobble and shell with less finer sediment present. Rock and reef features are still present within this box.

Future surveys will use the same methodology and will provide further insight as to the recovery of habitats and species within managed areas. The data will be used to allow the use of advanced statistical analysis to examine changes in seabed community composition between areas that are closed to bottom towed fishing gear and areas that are open over future years as the database increases.

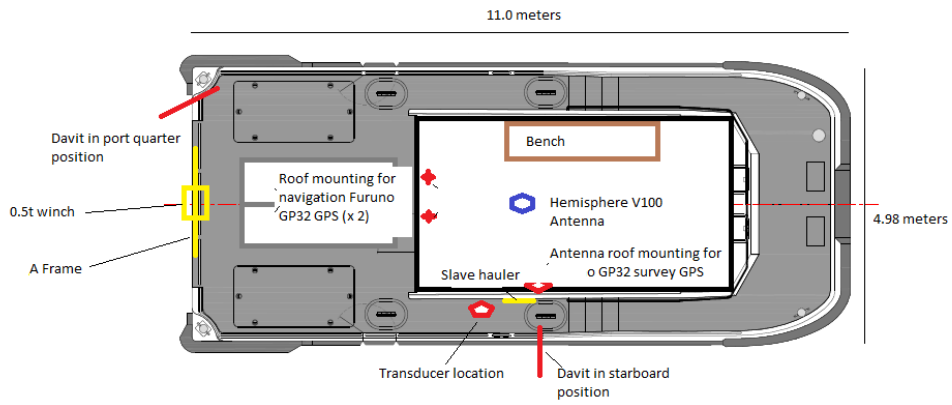
## 5 Appendices

### Annex 1 – R/V Tiger Lily Deck Plan & Offsets



Builder	South Boats Ltd
Model	Island MkII
Built	2007
LOA	11.0m
Beam	4.98m
Draught	1.1m (aft)
Tonnage	c.10 tonnes
Area of operation	MCA Category 2
Call sign	MRWR7
MMSI Number	235054954
MECAL Certification number	M07WB0111059
Complement	14 (including min 2 crew)
Propulsion	2 x 450hp Iveco NEF series
Speed	Cruising: 16 – 18 knots Top: 24 – 26 knots
Range	c. 400 nautical miles
240v AC supply	Victron 3Kw power inverter 5KvA Volvo-Perkins generator (All 240 AC power is accessed via APC Smart UPS C1500)
Stern Gantry	500kg SWL
Winch (on stern gantry)	Spencer Carter 0.5t with scrolling level wind
Slave hauler	Sea Winch 200m dia.
Electric line hauler	12v Spencer Carter Bandit
Positioning	Hemisphere V100 GNSS 3 x Furuno GP32
NMEA data outputs	4 x USB 4 x Serial 4 x banjo
Navigation	Olex with data export Knockle Hypack Max

Tiger Lily VI General Layout - Plan view



			Offset (m)		
NMEA Device	Make/Model	Offset Name	X (f'wd)	Y (port)	Z (+/-)
Sounder	Furuno Navnet	Transducer	7.0	4.2	-0.5
GPS	Furuno GP32	GPS 1	4.8	3.48	+2.2
GNSS	Hemisphere V100	GNSS 1	5.0	2.5	+2.35

## Annex 2 – Daily Log

4<sup>th</sup> July 2017 – Eddystone DDV Survey

The daily log for the survey carried out on 4<sup>th</sup> July 2017 is shown in Table 2.

**Survey code:** 20170704\_CIFCA\_SAC\_EDD\_DD

**Staff:** Colin Trundle (Principal Scientific Officer, Cornwall IFCA), Kimara Street (Scientific Officer, Cornwall IFCA), Annie Jenkin (Scientific Officer, Cornwall IFCA), Hilary Naylor (Scientific Officer, Cornwall IFCA), Dan McIntyre (skipper)

**Vessel:** Tiger Lily VI

All times are in UTC.

Table 2: Daily log from survey carried on board R/V Tiger Lily on 4<sup>th</sup> July 2017

Time	Activity
04:45	Crew onboard. Survey equipment checks carried out
05:15	Depart Mylor
06:50	Arrive at survey box 3. Checking drift direction
07:09	Camera in water for start of survey
07:14	Issues connecting to stills camera
07:20	Camera re-connected
07:22	Recover camera and move vessel position as drifted out of box
07:26	Vessel in position, camera re-deployed
07:30	Camera on sea bed
07:30	SOL BOX3_T1
07:50	EOL BOX3_T1
07:52	Camera recovered, moving to next location
07:59	Camera re-deployed
08:03	SOL BOX3_T2
08:22	EOL BOX3_T2
08:24	Camera recovered, moving to next location
08:37	Camera re-deployed
08:41	SOL BOX3_T3
09:04	EOL BOX3_T3
09:06	Camera recovered to deck
09:08	Reviewing stills. Flash did not work for last four stills
09:10	Re-starting system and carrying out camera checks
09:53	Re-deploying camera to check flash
10:30	Survey abandoned due to flash failure. Tech support from STR hasn't solved the issue
10:35	Steam for Whitsand Bay MCZ to record sightings data.
16:00	Arrive Mylor

The daily log for the survey carried out on 25<sup>th</sup> August 2017 is shown in Table 2.

**Survey code:** 20170704\_CIFCA\_SAC\_EDD\_DDV

**Staff:** Colin Trundle (Principal Scientific Officer, Cornwall IFCA), Annie Jenkin (Scientific Officer, Cornwall IFCA), Hilary Naylor (Scientific Officer, Cornwall IFCA), Dan McIntyre (skipper)

**Vessel:** Tiger Lily VI

All times are in UTC.

Table 3: Daily log from survey carried on board R/V Tiger Lily on 4<sup>th</sup> July 2017

Time	Activity
05:24	Arrive on Tiger Lily - emptying wrasse pots
05:40	Wrasse pots unloaded. Head to Eddystone
07:45	Arrive on site
08:05	SOL BOX2_T1
08:13	Camera frozen and struggling to re-connect
08:16	Camera re-connected
08:16	Mixed sediment
08:17	Camera frozen and struggling to re-connect
08:19	EOL BOX2_T1. Camera and video disconnected. Computer re-started.
08:22	No comms. Recovering camera
08:27	Camera recovered to side of Tiger Lily
08:35	Changed comms over. Re-starting line
08:43	On site. Camera re-deployed
08:48	SOL BOX2_T1A
09:10	EOL BOX2_T1A
09:11	Comms dropped out just as last still took
09:30	Comms issue fixed. Moving to next location
09:37	SOL BOX2_T2
10:03	EOL BOX2_T2
10:05	Recover camera to side of vessel
10:19	Restart software and take turns out of cable
10:27	SOL BOX2_T3
10:51	EOL BOX2_T3
11:12	SOL BOX2_T4
11:33	EOL BOX2_T4
12:32	SOL BOX1_T1
12:49	EOL BOX1_T1
13:03	SOL BOX1_T2
13:29	EOL BOX1_T2
13:46	SOL BOX1_T3
14:13	EOL BOX1_T3
14:30	SOL BOX1_T4
14:52	EOL BOX1_T4
14:53	Finish on site. Recovering camera
15:09	Camera recovered - head to Mylor
18:45	Arrive Mylor



## Annex 3 – Video position data from the Eddystone Reef Project in 2016

Cornwall IFCA			Video Positioning Summary								
Area		Eddystone Reef	Project name		20170704 and 20170825 Eddystone DDV Field Report						
Vessel		Tiger Lily	Sampling position		Starboard davit						
Sample type	Box	Image_ID	Date	Time SOL	Time EOL	SOL Latitude (decimal degrees)	SOL Longitude (decimal degrees)	EOL Latitude (decimal degrees)	EOL Longitude (decimal degrees)	Video length	Number of stills
Camera	1	CIFCA_ED_BOX1_T1_20170825	25/08/2017	12:32:53	12:49:09	50.21561	-4.33574	50.21556	-4.34018	00:16:16	11
Camera	1	CIFCA_ED_BOX1_T2_20170825	25/08/2017	13:03:43	13:29:21	50.21714	-4.33129	50.21752	-4.3376	00:25:38	27
Camera	1	CIFCA_ED_BOX1_T3_20170825	25/08/2017	13:46:41	14:13:07	50.21534	-4.32813	50.21622	-4.33466	00:26:26	26
Camera	1	CIFCA_ED_BOX1_T4_20170825	25/08/2017	14:30:12	14:53:19	50.21463	-4.33353	50.2152	-4.33893	00:23:07	24
Camera	2	CIFCA_ED_BOX2_T1_20170825	25/08/2017	08:05:36	08:16:45	50.22571	-4.36991	50.22569	-4.36652	00:11:09	9
Camera	2	CIFCA_ED_BOX2_T1A_20170825	25/08/2017	08:47:59	09:10:20	50.22576	-4.3707	50.22566	-4.36572	00:22:21	21
Camera	2	CIFCA_ED_BOX2_T2_20170825	25/08/2017	09:37:11	10:03:35	50.22668	-4.36725	50.22642	-4.36584	00:26:24	24
Camera	2	CIFCA_ED_BOX2_T3_20170825	25/08/2017	10:26:52	10:49:41	50.22436	-4.36138	50.22482	-4.36348	00:22:49	23
Camera	2	CIFCA_ED_BOX2_T4_20170825	25/08/2017	11:11:39	11:33:09	50.22471	-4.36965	50.22527	-4.37307	00:21:30	23
Camera	3	CIFCA_ED_BOX3_T1_20170704	04/07/2017	07:30:46	07:50:37	50.24916	-4.5057	50.24592	-4.50533	00:19:51	20
Camera	3	CIFCA_ED_BOX3_T2_20170704	04/07/2017	08:02:59	08:22:39	50.24795	-4.50459	50.24851	-4.50594	00:19:40	21
Camera	3	CIFCA_ED_BOX3_T3_20170704	04/07/2017	08:41:49	09:04:38	50.24537	-4.49876	50.24603	-4.50049	00:22:49	22

## Annex 4 – Still image position data from the Eddystone Reef Project in 2016

Cornwall IFCA							Camera Positioning Summary		
Area		Eddystone Reef	Project name		20170704 and 20170825 Eddystone DDV Field Report				
Vessel		Tiger Lily	Sampling position		Starboard davit				
Projection									
Sample type	Station number	Image_ID	Date	Time	Latitude (decimal degrees)	Longitude (decimal degrees)	Depth (m)	Substrate	Comments
Camera	BOX3_T1	CIFCA_ED_BOX3_T1_20170704__07_31_05__0001.JPG	04/07/2017	07:31	50.24561	-4.50350			
Camera	BOX3_T1	CIFCA_ED_BOX3_T1_20170704__07_32_28__0002.JPG	04/07/2017	07:32	50.24561	-4.50362			
Camera	BOX3_T1	CIFCA_ED_BOX3_T1_20170704__07_33_21__0003.JPG	04/07/2017	07:33	50.24563	-4.50371			
Camera	BOX3_T1	CIFCA_ED_BOX3_T1_20170704__07_34_23__0004.JPG	04/07/2017	07:34	50.24563	-4.50379			
Camera	BOX3_T1	CIFCA_ED_BOX3_T1_20170704__07_35_23__0005.JPG	04/07/2017	07:35	50.24564	-4.50388			
Camera	BOX3_T1	CIFCA_ED_BOX3_T1_20170704__07_36_24__0006.JPG	04/07/2017	07:36	50.24566	-4.50399			
Camera	BOX3_T1	CIFCA_ED_BOX3_T1_20170704__07_37_24__0007.JPG	04/07/2017	07:37	50.24568	-4.50409			
Camera	BOX3_T1	CIFCA_ED_BOX3_T1_20170704__07_38_26__0008.JPG	04/07/2017	07:38	50.24570	-4.50419			
Camera	BOX3_T1	CIFCA_ED_BOX3_T1_20170704__07_39_26__0009.JPG	04/07/2017	07:39	50.24571	-4.50431			
Camera	BOX3_T1	CIFCA_ED_BOX3_T1_20170704__07_40_24__0010.JPG	04/07/2017	07:40	50.24572	-4.50442			
Camera	BOX3_T1	CIFCA_ED_BOX3_T1_20170704__07_41_23__0011.JPG	04/07/2017	07:41	50.24573	-4.50451			
Camera	BOX3_T1	CIFCA_ED_BOX3_T1_20170704__07_42_23__0012.JPG	04/07/2017	07:42	50.24577	-4.50460			
Camera	BOX3_T1	CIFCA_ED_BOX3_T1_20170704__07_43_23__0013.JPG	04/07/2017	07:43	50.24580	-4.50470			
Camera	BOX3_T1	CIFCA_ED_BOX3_T1_20170704__07_44_23__0014.JPG	04/07/2017	07:44	50.24581	-4.50479			
Camera	BOX3_T1	CIFCA_ED_BOX3_T1_20170704__07_45_25__0015.JPG	04/07/2017	07:45	50.24582	-4.50489			
Camera	BOX3_T1	CIFCA_ED_BOX3_T1_20170704__07_46_25__0016.JPG	04/07/2017	07:46	50.24583	-4.50498			
Camera	BOX3_T1	CIFCA_ED_BOX3_T1_20170704__07_47_24__0017.JPG	04/07/2017	07:47	50.24586	-4.50507			
Camera	BOX3_T1	CIFCA_ED_BOX3_T1_20170704__07_48_25__0018.JPG	04/07/2017	07:48	50.24587	-4.50514			
Camera	BOX3_T1	CIFCA_ED_BOX3_T1_20170704__07_49_23__0019.JPG	04/07/2017	07:49	50.24589	-4.50523			
Camera	BOX3_T1	CIFCA_ED_BOX3_T1_20170704__07_50_25__0020.JPG	04/07/2017	07:50	50.24592	-4.50531			
Camera	BOX3_T2	CIFCA_ED_BOX3_T2_20170704__08_03_15__0021.JPG	04/07/2017	08:03	50.24795	-4.50464			
Camera	BOX3_T2	CIFCA_ED_BOX3_T2_20170704__08_04_22__0022.JPG	04/07/2017	08:04	50.24797	-4.50473			

Cornwall IFCA							Camera Positioning Summary			
Area		Eddystone Reef		Project name		20170704 and 20170825 Eddystone DDV Field Report				
Vessel		Tiger Lily		Sampling position		Starboard davit				
Projection										
Sample type	Station number	Image_ID	Date	Time	Latitude (decimal degrees)	Longitude (decimal degrees)	Depth (m)	Substrate	Comments	
Camera	BOX3_T2	CIFCA_ED_BOX3_T2_20170704__08_05_23__0023.JPG	04/07/2017	08:05	50.24798	-4.50482				
Camera	BOX3_T2	CIFCA_ED_BOX3_T2_20170704__08_06_23__0024.JPG	04/07/2017	08:06	50.24800	-4.50489				
Camera	BOX3_T2	CIFCA_ED_BOX3_T2_20170704__08_07_35__0025.JPG	04/07/2017	08:07	50.24801	-4.50502				
Camera	BOX3_T2	CIFCA_ED_BOX3_T2_20170704__08_08_24__0026.JPG	04/07/2017	08:08	50.24802	-4.50509				
Camera	BOX3_T2	CIFCA_ED_BOX3_T2_20170704__08_09_25__0027.JPG	04/07/2017	08:09	50.24804	-4.50518				
Camera	BOX3_T2	CIFCA_ED_BOX3_T2_20170704__08_10_24__0028.JPG	04/07/2017	08:10	50.24806	-4.50526				
Camera	BOX3_T2	CIFCA_ED_BOX3_T2_20170704__08_11_22__0029.JPG	04/07/2017	08:11	50.24808	-4.50535				
Camera	BOX3_T2	CIFCA_ED_BOX3_T2_20170704__08_12_23__0030.JPG	04/07/2017	08:12	50.24810	-4.50542				
Camera	BOX3_T2	CIFCA_ED_BOX3_T2_20170704__08_13_27__0031.JPG	04/07/2017	08:13	50.24814	-4.50551				
Camera	BOX3_T2	CIFCA_ED_BOX3_T2_20170704__08_14_25__0032.JPG	04/07/2017	08:14	50.24816	-4.50557				
Camera	BOX3_T2	CIFCA_ED_BOX3_T2_20170704__08_15_23__0033.JPG	04/07/2017	08:15	50.24819	-4.50563				
Camera	BOX3_T2	CIFCA_ED_BOX3_T2_20170704__08_16_26__0034.JPG	04/07/2017	08:16	50.24822	-4.50569				
Camera	BOX3_T2	CIFCA_ED_BOX3_T2_20170704__08_16_37__0035.JPG	04/07/2017	08:16	50.24823	-4.50570				
Camera	BOX3_T2	CIFCA_ED_BOX3_T2_20170704__08_17_20__0036.JPG	04/07/2017	08:17	50.24825	-4.50574				
Camera	BOX3_T2	CIFCA_ED_BOX3_T2_20170704__08_18_46__0037.JPG	04/07/2017	08:18	50.24831	-4.50580				
Camera	BOX3_T2	CIFCA_ED_BOX3_T2_20170704__08_19_41__0038.JPG	04/07/2017	08:19	50.24835	-4.50584				
Camera	BOX3_T2	CIFCA_ED_BOX3_T2_20170704__08_20_25__0039.JPG	04/07/2017	08:20	50.24838	-4.50587				
Camera	BOX3_T2	CIFCA_ED_BOX3_T2_20170704__08_21_24__0040.JPG	04/07/2017	08:21	50.24843	-4.50590				
Camera	BOX3_T2	CIFCA_ED_BOX3_T2_20170704__08_22_23__0041.JPG	04/07/2017	08:22	50.24850	-4.50593				
Camera	BOX3_T3	CIFCA_ED_BOX3_T3_20170704__08_42_09__0042.JPG	04/07/2017	08:42	50.24538	-4.49880				
Camera	BOX3_T3	CIFCA_ED_BOX3_T3_20170704__08_43_29__0043.JPG	04/07/2017	08:43	50.24543	-4.49889				
Camera	BOX3_T3	CIFCA_ED_BOX3_T3_20170704__08_44_23__0044.JPG	04/07/2017	08:44	50.24545	-4.49895				
Camera	BOX3_T3	CIFCA_ED_BOX3_T3_20170704__08_45_25__0045.JPG	04/07/2017	08:45	50.24549	-4.49902				
Camera	BOX3_T3	CIFCA_ED_BOX3_T3_20170704__08_46_23__0046.JPG	04/07/2017	08:46	50.24552	-4.49911				

Cornwall IFCA							Camera Positioning Summary			
Area		Eddystone Reef		Project name		20170704 and 20170825 Eddystone DDV Field Report				
Vessel		Tiger Lily		Sampling position		Starboard davit				
Projection										
Sample type	Station number	Image_ID	Date	Time	Latitude (decimal degrees)	Longitude (decimal degrees)	Depth (m)	Substrate	Comments	
Camera	BOX3_T3	CIFCA_ED_BOX3_T3_20170704__08_47_22__0047.JPG	04/07/2017	08:47	50.24554	-4.49919				
Camera	BOX3_T3	CIFCA_ED_BOX3_T3_20170704__08_48_23__0048.JPG	04/07/2017	08:48	50.24559	-4.49926				
Camera	BOX3_T3	CIFCA_ED_BOX3_T3_20170704__08_49_21__0049.JPG	04/07/2017	08:49	50.24562	-4.49932				
Camera	BOX3_T3	CIFCA_ED_BOX3_T3_20170704__08_50_24__0050.JPG	04/07/2017	08:50	50.24566	-4.49940				
Camera	BOX3_T3	CIFCA_ED_BOX3_T3_20170704__08_51_24__0051.JPG	04/07/2017	08:51	50.24569	-4.49950				
Camera	BOX3_T3	CIFCA_ED_BOX3_T3_20170704__08_52_25__0052.JPG	04/07/2017	08:52	50.24572	-4.49958				
Camera	BOX3_T3	CIFCA_ED_BOX3_T3_20170704__08_53_24__0053.JPG	04/07/2017	08:53	50.24575	-4.49964				
Camera	BOX3_T3	CIFCA_ED_BOX3_T3_20170704__08_54_23__0054.JPG	04/07/2017	08:54	50.24578	-4.49973				
Camera	BOX3_T3	CIFCA_ED_BOX3_T3_20170704__08_55_29__0055.JPG	04/07/2017	08:55	50.24580	-4.49981				
Camera	BOX3_T3	CIFCA_ED_BOX3_T3_20170704__08_56_27__0056.JPG	04/07/2017	08:56	50.24582	-4.49988				
Camera	BOX3_T3	CIFCA_ED_BOX3_T3_20170704__08_58_25__0057.JPG	04/07/2017	08:57	50.24585	-4.49996				
Camera	BOX3_T3	CIFCA_ED_BOX3_T3_20170704__08_58_29__0058.JPG	04/07/2017	08:58	50.24587	-4.50003				
Camera	BOX3_T3	CIFCA_ED_BOX3_T3_20170704__09_00_27__0059.JPG	04/07/2017	09:00	50.24592	-4.50019				
Camera	BOX3_T3	CIFCA_ED_BOX3_T3_20170704__09_01_25__0060.JPG	04/07/2017	09:01	50.24595	-4.50025				
Camera	BOX3_T3	CIFCA_ED_BOX3_T3_20170704__09_02_29__0061.JPG	04/07/2017	09:02	50.24597	-4.50033				
Camera	BOX3_T3	CIFCA_ED_BOX3_T3_20170704__09_03_25__0062.JPG	04/07/2017	09:03	50.24600	-4.50040				
Camera	BOX3_T3	CIFCA_ED_BOX3_T3_20170704__09_04_25__0063.JPG	04/07/2017	09:04	50.24603	-4.50047				
Camera	BOX2_T1	CIFCA_EDD_BOX2_T120170825__08_05_53__0002.JPG	25/08/2017	08:05	50.22571	-4.36991				
Camera	BOX2_T1	CIFCA_EDD_BOX2_T120170825__08_06_46__0003.JPG	25/08/2017	08:06	50.22570	-4.36958				
Camera	BOX2_T1	CIFCA_EDD_BOX2_T120170825__08_07_46__0004.JPG	25/08/2017	08:07	50.22570	-4.36925				
Camera	BOX2_T1	CIFCA_EDD_BOX2_T120170825__08_08_46__0005.JPG	25/08/2017	08:08	50.22572	-4.36893				
Camera	BOX2_T1	CIFCA_EDD_BOX2_T120170825__08_09_47__0006.JPG	25/08/2017	08:09	50.22573	-4.36864				
Camera	BOX2_T1	CIFCA_EDD_BOX2_T120170825__08_10_46__0007.JPG	25/08/2017	08:10	50.22572	-4.36835				
Camera	BOX2_T1	CIFCA_EDD_BOX2_T120170825__08_11_46__0008.JPG	25/08/2017	08:11	50.22571	-4.36804				

Cornwall IFCA							Camera Positioning Summary			
Area		Eddystone Reef	Project name		20170704 and 20170825 Eddystone DDV Field Report					
Vessel		Tiger Lily	Sampling position		Starboard davit					
Projection										
Sample type	Station number	Image_ID	Date	Time	Latitude (decimal degrees)	Longitude (decimal degrees)	Depth (m)	Substrate	Comments	
Camera	BOX2_T1	CIFCA_EDD_BOX2_T120170825__08_12_48__0009.JPG	25/08/2017	08:12	50.22570	-4.36770				
Camera	BOX2_T1	CIFCA_EDD_BOX2_T120170825__08_16_47__0010.JPG	25/08/2017	08:16	50.22569	-4.36652				
Camera	BOX2_T1A	CIFCA_EDD_BOX2_T1A20170825__08_48_38__0001.JPG	25/08/2017	08:48	50.22576	-4.37070				
Camera	BOX2_T1A	CIFCA_EDD_BOX2_T1A20170825__08_49_18__0002.JPG	25/08/2017	08:49	50.22577	-4.37034	53			
Camera	BOX2_T1A	CIFCA_EDD_BOX2_T1A20170825__08_50_16__0003.JPG	25/08/2017	08:50	50.22574	-4.37010	53			
Camera	BOX2_T1A	CIFCA_EDD_BOX2_T1A20170825__08_51_15__0004.JPG	25/08/2017	08:51	50.22573	-4.36983	53			
Camera	BOX2_T1A	CIFCA_EDD_BOX2_T1A20170825__08_52_15__0005.JPG	25/08/2017	08:52	50.22574	-4.36959	53			
Camera	BOX2_T1A	CIFCA_EDD_BOX2_T1A20170825__08_53_16__0006.JPG	25/08/2017	08:53	50.22574	-4.36933	53			
Camera	BOX2_T1A	CIFCA_EDD_BOX2_T1A20170825__08_54_16__0007.JPG	25/08/2017	08:54	50.22572	-4.36910	53			
Camera	BOX2_T1A	CIFCA_EDD_BOX2_T1A20170825__08_55_16__0008.JPG	25/08/2017	08:55	50.22573	-4.36886	53			
Camera	BOX2_T1A	CIFCA_EDD_BOX2_T1A20170825__08_56_15__0009.JPG	25/08/2017	08:56	50.22572	-4.36865	53			
Camera	BOX2_T1A	CIFCA_EDD_BOX2_T1A20170825__08_57_16__0010.JPG	25/08/2017	08:57	50.22573	-4.36840	53			
Camera	BOX2_T1A	CIFCA_EDD_BOX2_T1A20170825__08_58_15__0011.JPG	25/08/2017	08:58	50.22573	-4.36820	53			
Camera	BOX2_T1A	CIFCA_EDD_BOX2_T1A20170825__08_59_17__0012.JPG	25/08/2017	08:59	50.22573	-4.36796	53			
Camera	BOX2_T1A	CIFCA_EDD_BOX2_T1A20170825__09_00_16__0013.JPG	25/08/2017	09:00	50.22572	-4.36774	53			
Camera	BOX2_T1A	CIFCA_EDD_BOX2_T1A20170825__09_01_17__0014.JPG	25/08/2017	09:01	50.22571	-4.36749	53			
Camera	BOX2_T1A	CIFCA_EDD_BOX2_T1A20170825__09_02_19__0015.JPG	25/08/2017	09:02	50.22573	-4.36725	53			
Camera	BOX2_T1A	CIFCA_EDD_BOX2_T1A20170825__09_03_16__0016.JPG	25/08/2017	09:03	50.22569	-4.36705	53			
Camera	BOX2_T1A	CIFCA_EDD_BOX2_T1A20170825__09_04_16__0017.JPG	25/08/2017	09:04	50.22568	-4.36683	54			
Camera	BOX2_T1A	CIFCA_EDD_BOX2_T1A20170825__09_05_17__0018.JPG	25/08/2017	09:05	50.22568	-4.36663	53			
Camera	BOX2_T1A	CIFCA_EDD_BOX2_T1A20170825__09_07_17__0019.JPG	25/08/2017	09:07	50.22565	-4.36626	54			
Camera	BOX2_T1A	CIFCA_EDD_BOX2_T1A20170825__09_08_16__0020.JPG	25/08/2017	09:08	50.22564	-4.36608	54			
Camera	BOX2_T1A	CIFCA_EDD_BOX2_T1A20170825__09_09_18__0021.JPG	25/08/2017	09:09	50.22565	-4.36588	54			

Cornwall IFCA							Camera Positioning Summary			
Area		Eddystone Reef	Project name		20170704 and 20170825 Eddystone DDV Field Report					
Vessel		Tiger Lily	Sampling position		Starboard davit					
Projection										
Sample type	Station number	Image_ID	Date	Time	Latitude (decimal degrees)	Longitude (decimal degrees)	Depth (m)	Substrate	Comments	
Camera	BOX2_T2	CIFCA_EDD_BOX2_T220170825__09_38_08__0001.JPG	25/08/2017	09:38	50.22667	-4.36716	52			
Camera	BOX2_T2	CIFCA_EDD_BOX2_T220170825__09_39_08__0002.JPG	25/08/2017	09:39	50.22666	-4.36708	53			
Camera	BOX2_T2	CIFCA_EDD_BOX2_T220170825__09_40_10__0003.JPG	25/08/2017	09:40	50.22665	-4.36699	53			
Camera	BOX2_T2	CIFCA_EDD_BOX2_T220170825__09_41_09__0004.JPG	25/08/2017	09:41	50.22663	-4.36690	53			
Camera	BOX2_T2	CIFCA_EDD_BOX2_T220170825__09_42_09__0005.JPG	25/08/2017	09:42	50.22664	-4.36683	53			
Camera	BOX2_T2	CIFCA_EDD_BOX2_T220170825__09_43_09__0006.JPG	25/08/2017	09:43	50.22663	-4.36675	52			
Camera	BOX2_T2	CIFCA_EDD_BOX2_T220170825__09_44_10__0007.JPG	25/08/2017	09:44	50.22662	-4.36666	52			
Camera	BOX2_T2	CIFCA_EDD_BOX2_T220170825__09_45_10__0008.JPG	25/08/2017	09:45	50.22662	-4.36658	53			
Camera	BOX2_T2	CIFCA_EDD_BOX2_T220170825__09_46_11__0009.JPG	25/08/2017	09:46	50.22661	-4.36654	53			
Camera	BOX2_T2	CIFCA_EDD_BOX2_T220170825__09_47_15__0010.JPG	25/08/2017	09:47	50.22659	-4.36648	53			
Camera	BOX2_T2	CIFCA_EDD_BOX2_T220170825__09_48_11__0011.JPG	25/08/2017	09:48	50.22657	-4.36641	53			
Camera	BOX2_T2	CIFCA_EDD_BOX2_T220170825__09_49_09__0012.JPG	25/08/2017	09:49	50.22657	-4.36634	53			
Camera	BOX2_T2	CIFCA_EDD_BOX2_T220170825__09_50_10__0013.JPG	25/08/2017	09:50	50.22656	-4.36629	53			
Camera	BOX2_T2	CIFCA_EDD_BOX2_T220170825__09_51_10__0014.JPG	25/08/2017	09:51	50.22657	-4.36627	52			
Camera	BOX2_T2	CIFCA_EDD_BOX2_T220170825__09_52_11__0015.JPG	25/08/2017	09:52	50.22655	-4.36621	53			
Camera	BOX2_T2	CIFCA_EDD_BOX2_T220170825__09_53_11__0016.JPG	25/08/2017	09:53	50.22653	-4.36616	53			
Camera	BOX2_T2	CIFCA_EDD_BOX2_T220170825__09_56_09__0017.JPG	25/08/2017	09:56	50.22649	-4.36606	52			
Camera	BOX2_T2	CIFCA_EDD_BOX2_T220170825__09_57_13__0018.JPG	25/08/2017	09:57	50.22649	-4.36602	53			
Camera	BOX2_T2	CIFCA_EDD_BOX2_T220170825__09_58_12__0019.JPG	25/08/2017	09:58	50.22648	-4.36596	52			
Camera	BOX2_T2	CIFCA_EDD_BOX2_T220170825__09_59_14__0020.JPG	25/08/2017	09:59	50.22648	-4.36593	53			
Camera	BOX2_T2	CIFCA_EDD_BOX2_T220170825__10_00_12__0021.JPG	25/08/2017	10:00	50.22646	-4.36590	53			
Camera	BOX2_T2	CIFCA_EDD_BOX2_T220170825__10_00_38__0022.JPG	25/08/2017	10:00	50.22645	-4.36590	53			
Camera	BOX2_T2	CIFCA_EDD_BOX2_T220170825__10_01_12__0023.JPG	25/08/2017	10:01	50.22644	-4.36588	52			
Camera	BOX2_T2	CIFCA_EDD_BOX2_T220170825__10_02_31__0024.JPG	25/08/2017	10:02	50.22645	-4.36587	52			

Cornwall IFCA							Camera Positioning Summary		
Area		Eddystone Reef	Project name		20170704 and 20170825 Eddystone DDV Field Report				
Vessel		Tiger Lily	Sampling position		Starboard davit				
Projection									
Sample type	Station number	Image_ID	Date	Time	Latitude (decimal degrees)	Longitude (decimal degrees)	Depth (m)	Substrate	Comments
Camera	BOX2_T3	CIFCA_EDD_BOX2_T320170825__10_27_30__0001.JPG	25/08/2017	10:27					
Camera	BOX2_T3	CIFCA_EDD_BOX2_T320170825__10_28_00__0002.JPG	25/08/2017	10:28	50.22440	-4.36147	56		
Camera	BOX2_T3	CIFCA_EDD_BOX2_T320170825__10_28_58__0003.JPG	25/08/2017	10:28	50.22442	-4.36156	56		
Camera	BOX2_T3	CIFCA_EDD_BOX2_T320170825__10_30_03__0004.JPG	25/08/2017	10:30			56		
Camera	BOX2_T3	CIFCA_EDD_BOX2_T320170825__10_31_03__0005.JPG	25/08/2017	10:31	50.22449	-4.36176	55		
Camera	BOX2_T3	CIFCA_EDD_BOX2_T320170825__10_32_01__0006.JPG	25/08/2017	10:32	50.22452	-4.36185	56		
Camera	BOX2_T3	CIFCA_EDD_BOX2_T320170825__10_33_01__0007.JPG	25/08/2017	10:33	50.22454	-4.36193	55		
Camera	BOX2_T3	CIFCA_EDD_BOX2_T320170825__10_34_01__0008.JPG	25/08/2017	10:34	50.22456	-4.36201	55		
Camera	BOX2_T3	CIFCA_EDD_BOX2_T320170825__10_35_01__0009.JPG	25/08/2017	10:35	50.22457	-4.36209	55		
Camera	BOX2_T3	CIFCA_EDD_BOX2_T320170825__10_36_00__0010.JPG	25/08/2017	10:36	50.22458	-4.36220	55		
Camera	BOX2_T3	CIFCA_EDD_BOX2_T320170825__10_37_00__0011.JPG	25/08/2017	10:37	50.22460	-4.36228	55		
Camera	BOX2_T3	CIFCA_EDD_BOX2_T320170825__10_38_00__0012.JPG	25/08/2017	10:38	50.22464	-4.36236	54		
Camera	BOX2_T3	CIFCA_EDD_BOX2_T320170825__10_39_00__0013.JPG	25/08/2017	10:39	50.22465	-4.36242	55		
Camera	BOX2_T3	CIFCA_EDD_BOX2_T320170825__10_40_01__0014.JPG	25/08/2017	10:40	50.22466	-4.36252	55		
Camera	BOX2_T3	CIFCA_EDD_BOX2_T320170825__10_41_03__0015.JPG	25/08/2017	10:41	50.22469	-4.36260	54		
Camera	BOX2_T3	CIFCA_EDD_BOX2_T320170825__10_42_01__0016.JPG	25/08/2017	10:42	50.22472	-4.36269	54		
Camera	BOX2_T3	CIFCA_EDD_BOX2_T320170825__10_43_01__0017.JPG	25/08/2017	10:43	50.22471	-4.36281	55		
Camera	BOX2_T3	CIFCA_EDD_BOX2_T320170825__10_43_59__0018.JPG	25/08/2017	10:43	50.22473	-4.36290	54		
Camera	BOX2_T3	CIFCA_EDD_BOX2_T320170825__10_45_00__0019.JPG	25/08/2017	10:45	50.22475	-4.36299	54		
Camera	BOX2_T3	CIFCA_EDD_BOX2_T320170825__10_46_01__0020.JPG	25/08/2017	10:46	50.22478	-4.36309	54		
Camera	BOX2_T3	CIFCA_EDD_BOX2_T320170825__10_47_00__0021.JPG	25/08/2017	10:47	50.22479	-4.36319	54		
Camera	BOX2_T3	CIFCA_EDD_BOX2_T320170825__10_47_59__0022.JPG	25/08/2017	10:47	50.22478	-4.36332	54		
Camera	BOX2_T3	CIFCA_EDD_BOX2_T320170825__10_49_00__0023.JPG	25/08/2017	10:49	50.22480	-4.36342	54		
Camera	BOX2_T4	CIFCA_EDD_BOX2_T420170825__11_12_33__0024.JPG	25/08/2017	11:12	50.22472	-4.36978	Sounder not		

Cornwall IFCA							Camera Positioning Summary		
Area		Eddystone Reef	Project name		20170704 and 20170825 Eddystone DDV Field Report				
Vessel		Tiger Lily	Sampling position		Starboard davit				
Projection									
Sample type	Station number	Image_ID	Date	Time	Latitude (decimal degrees)	Longitude (decimal degrees)	Depth (m)	Substrate	Comments
							working		
Camera	BOX2_T4	CIFCA_EDD_BOX2_T420170825__11_13_31__0025.JPG	25/08/2017	11:13	50.22475	-4.36993	Sounder not working		
Camera	BOX2_T4	CIFCA_EDD_BOX2_T420170825__11_14_30__0026.JPG	25/08/2017	11:14	50.22478	-4.37005	Sounder not working		
Camera	BOX2_T4	CIFCA_EDD_BOX2_T420170825__11_15_32__0027.JPG	25/08/2017	11:15	50.22483	-4.37019	Sounder not working		
Camera	BOX2_T4	CIFCA_EDD_BOX2_T420170825__11_16_34__0028.JPG	25/08/2017	11:16	50.22487	-4.37035	Sounder not working		
Camera	BOX2_T4	CIFCA_EDD_BOX2_T420170825__11_17_28__0029.JPG	25/08/2017	11:17	50.22490	-4.37049	Sounder not working		
Camera	BOX2_T4	CIFCA_EDD_BOX2_T420170825__11_18_33__0030.JPG	25/08/2017	11:18	50.22493	-4.37065	Sounder not working		
Camera	BOX2_T4	CIFCA_EDD_BOX2_T420170825__11_19_31__0031.JPG	25/08/2017	11:19	50.22495	-4.37080	Sounder not working		
Camera	BOX2_T4	CIFCA_EDD_BOX2_T420170825__11_20_30__0032.JPG	25/08/2017	11:20	50.22498	-4.37095	Sounder not working		
Camera	BOX2_T4	CIFCA_EDD_BOX2_T420170825__11_21_31__0033.JPG	25/08/2017	11:21	50.22499	-4.37110	Sounder not working		
Camera	BOX2_T4	CIFCA_EDD_BOX2_T420170825__11_22_31__0034.JPG	25/08/2017	11:22	50.22501	-4.37126	Sounder not working		
Camera	BOX2_T4	CIFCA_EDD_BOX2_T420170825__11_23_31__0035.JPG	25/08/2017	11:23	50.22504	-4.37141	Sounder not working		
Camera	BOX2_T4	CIFCA_EDD_BOX2_T420170825__11_24_34__0036.JPG	25/08/2017	11:24	50.22508	-4.37157	Sounder not working		
Camera	BOX2_T4	CIFCA_EDD_BOX2_T420170825__11_25_06__0037.JPG	25/08/2017	11:25	50.22510	-4.37168	Sounder not working		
Camera	BOX2_T4	CIFCA_EDD_BOX2_T420170825__11_25_40__0038.JPG	25/08/2017	11:25	50.22512	-4.37176	Sounder not working		
Camera	BOX2_T4	CIFCA_EDD_BOX2_T420170825__11_26_34__0039.JPG	25/08/2017	11:26	50.22514	-4.37194	Sounder not working		
Camera	BOX2_T4	CIFCA_EDD_BOX2_T420170825__11_27_39__0040.JPG	25/08/2017	11:27	50.22515	-4.37211	Sounder not working		
Camera	BOX2_T4	CIFCA_EDD_BOX2_T420170825__11_28_03__0041.JPG	25/08/2017	11:28	50.22518	-4.37220	Sounder not working		



Cornwall IFCA							Camera Positioning Summary			
Area		Eddystone Reef	Project name		20170704 and 20170825 Eddystone DDV Field Report					
Vessel		Tiger Lily	Sampling position		Starboard davit					
Projection										
Sample type	Station number	Image_ID	Date	Time	Latitude (decimal degrees)	Longitude (decimal degrees)	Depth (m)	Substrate	Comments	
Camera	BOX2_T4	CIFCA_EDD_BOX2_T420170825__11_28_31__0042.JPG	25/08/2017	11:28	50.22518	-4.37226	Sounder not working			
Camera	BOX2_T4	CIFCA_EDD_BOX2_T420170825__11_29_32__0043.JPG	25/08/2017	11:29	50.22519	-4.37244	Sounder not working			
Camera	BOX2_T4	CIFCA_EDD_BOX2_T420170825__11_30_30__0044.JPG	25/08/2017	11:30	50.22521	-4.37261	Sounder not working			
Camera	BOX2_T4	CIFCA_EDD_BOX2_T420170825__11_31_32__0045.JPG	25/08/2017	11:31	50.22522	-4.37280	Sounder not working			
Camera	BOX2_T4	CIFCA_EDD_BOX2_T420170825__11_32_32__0046.JPG	25/08/2017	11:32	50.22524	-4.37297	Sounder not working			
Camera	BOX1_T1	CIFCA_EDD_BOX1_T120170825__12_34_44__0001.JPG	25/08/2017	12:34						
Camera	BOX1_T1	CIFCA_EDD_BOX1_T120170825__12_35_18__0002.JPG	25/08/2017	12:35	50.21563	-4.33642	50.1			
Camera	BOX1_T1	CIFCA_EDD_BOX1_T120170825__12_36_25__0003.JPG	25/08/2017	12:36			50			
Camera	BOX1_T1	CIFCA_EDD_BOX1_T120170825__12_37_16__0004.JPG	25/08/2017	12:37	50.21564	-4.33690	50.1			
Camera	BOX1_T1	CIFCA_EDD_BOX1_T120170825__12_38_16__0005.JPG	25/08/2017	12:38	50.21565	-4.33712	49.6			
Camera	BOX1_T1	CIFCA_EDD_BOX1_T120170825__12_39_20__0006.JPG	25/08/2017	12:39	50.21565	-4.33739	49.4			
Camera	BOX1_T1	CIFCA_EDD_BOX1_T120170825__12_40_16__0007.JPG	25/08/2017	12:40	50.21567	-4.33766	48.8			
Camera	BOX1_T1	CIFCA_EDD_BOX1_T120170825__12_41_17__0008.JPG	25/08/2017	12:41	50.21566	-4.33796	49			
Camera	BOX1_T1	CIFCA_EDD_BOX1_T120170825__12_42_18__0009.JPG	25/08/2017	12:42	50.21565	-4.33825	48.3			
Camera	BOX1_T1	CIFCA_EDD_BOX1_T120170825__12_43_18__0010.JPG	25/08/2017	12:43	50.21565	-4.33855	42			
Camera	BOX1_T1	CIFCA_EDD_BOX1_T120170825__12_44_17__0011.JPG	25/08/2017	12:47	50.21565	-4.33878				
Camera	BOX1_T2	CIFCA_EDD_BOX1_T220170825__13_02_27__0013.JPG	25/08/2017	13:02						
Camera	BOX1_T2	CIFCA_EDD_BOX1_T220170825__13_04_15__0014.JPG	25/08/2017	13:04	50.21715	-4.33143	50.3			
Camera	BOX1_T2	CIFCA_EDD_BOX1_T220170825__13_05_16__0015.JPG	25/08/2017	13:05	50.21716	-4.33171	51.1			
Camera	BOX1_T2	CIFCA_EDD_BOX1_T220170825__13_06_17__0016.JPG	25/08/2017	13:06	50.21719	-4.33198	50.7			
Camera	BOX1_T2	CIFCA_EDD_BOX1_T220170825__13_07_21__0017.JPG	25/08/2017	13:07	50.21723	-4.33222	50.2			
Camera	BOX1_T2	CIFCA_EDD_BOX1_T220170825__13_08_14__0018.JPG	25/08/2017	13:08	50.21723	-4.33245	50.6			

Cornwall IFCA							Camera Positioning Summary			
Area		Eddystone Reef	Project name		20170704 and 20170825 Eddystone DDV Field Report					
Vessel		Tiger Lily	Sampling position		Starboard davit					
Projection										
Sample type	Station number	Image_ID	Date	Time	Latitude (decimal degrees)	Longitude (decimal degrees)	Depth (m)	Substrate	Comments	
Camera	BOX1_T2	CIFCA_EDD_BOX1_T220170825__13_09_15__0019.JPG	25/08/2017	13:09	50.21727	-4.33271	50.1			
Camera	BOX1_T2	CIFCA_EDD_BOX1_T220170825__13_10_16__0020.JPG	25/08/2017	13:10	50.21729	-4.33297	50.1			
Camera	BOX1_T2	CIFCA_EDD_BOX1_T220170825__13_11_16__0021.JPG	25/08/2017	13:11	50.21731	-4.33320	50.6			
Camera	BOX1_T2	CIFCA_EDD_BOX1_T220170825__13_12_16__0022.JPG	25/08/2017	13:12	50.21733	-4.33344	51.4			
Camera	BOX1_T2	CIFCA_EDD_BOX1_T220170825__13_13_18__0023.JPG	25/08/2017	13:13	50.21735	-4.33370	49.9			
Camera	BOX1_T2	CIFCA_EDD_BOX1_T220170825__13_14_16__0024.JPG	25/08/2017	13:14	50.21738	-4.33399	50.6			
Camera	BOX1_T2	CIFCA_EDD_BOX1_T220170825__13_15_20__0025.JPG	25/08/2017	13:15	50.21737	-4.33428				
Camera	BOX1_T2	CIFCA_EDD_BOX1_T220170825__13_16_20__0026.JPG	25/08/2017	13:16			50			
Camera	BOX1_T2	CIFCA_EDD_BOX1_T220170825__13_17_15__0027.JPG	25/08/2017	13:17	50.21741	-4.33473	50.2			
Camera	BOX1_T2	CIFCA_EDD_BOX1_T220170825__13_18_17__0028.JPG	25/08/2017	13:18	50.21742	-4.33495	50.8			
Camera	BOX1_T2	CIFCA_EDD_BOX1_T220170825__13_19_17__0029.JPG	25/08/2017	13:19	50.21744	-4.33519	50.1			
Camera	BOX1_T2	CIFCA_EDD_BOX1_T220170825__13_20_15__0030.JPG	25/08/2017	13:20	50.21744	-4.33543	50			
Camera	BOX1_T2	CIFCA_EDD_BOX1_T220170825__13_21_18__0031.JPG	25/08/2017	13:21	50.21744	-4.33567	49.9			
Camera	BOX1_T2	CIFCA_EDD_BOX1_T220170825__13_22_16__0032.JPG	25/08/2017	13:22	50.21746	-4.33592	49.9			
Camera	BOX1_T2	CIFCA_EDD_BOX1_T220170825__13_23_17__0033.JPG	25/08/2017	13:23	50.21749	-4.33617	50			
Camera	BOX1_T2	CIFCA_EDD_BOX1_T220170825__13_24_19__0034.JPG	25/08/2017	13:24	50.21749	-4.33641	49.7			
Camera	BOX1_T2	CIFCA_EDD_BOX1_T220170825__13_25_17__0035.JPG	25/08/2017	13:25	50.21749	-4.33664	49.4			
Camera	BOX1_T2	CIFCA_EDD_BOX1_T220170825__13_26_17__0036.JPG	25/08/2017	13:26	50.21748	-4.33688	49.5			
Camera	BOX1_T2	CIFCA_EDD_BOX1_T220170825__13_27_15__0037.JPG	25/08/2017	13:27	50.21747	-4.33710	49.9			
Camera	BOX1_T2	CIFCA_EDD_BOX1_T220170825__13_28_17__0038.JPG	25/08/2017	13:28	50.21751	-4.33733	49.6			
Camera	BOX1_T2	CIFCA_EDD_BOX1_T220170825__13_29_19__0039.JPG	25/08/2017	13:29	50.21752	-4.33760	49			
Camera	BOX1_T3	CIFCA_EDD_BOX1_T320170825__13_47_54__0040.JPG	25/08/2017	13:47	50.21538	-4.32848	50			
Camera	BOX1_T3	CIFCA_EDD_BOX1_T320170825__13_48_56__0041.JPG	25/08/2017	13:48	50.21543	-4.32871	48.9			
Camera	BOX1_T3	CIFCA_EDD_BOX1_T320170825__13_49_55__0042.JPG	25/08/2017	13:49	50.21544	-4.32896	49.4			

Cornwall IFCA							Camera Positioning Summary			
Area		Eddystone Reef		Project name		20170704 and 20170825 Eddystone DDV Field Report				
Vessel		Tiger Lily		Sampling position		Starboard davit				
Projection										
Sample type	Station number	Image_ID	Date	Time	Latitude (decimal degrees)	Longitude (decimal degrees)	Depth (m)	Substrate	Comments	
Camera	BOX1_T3	CIFCA_EDD_BOX1_T320170825__13_50_59__0043.JPG	25/08/2017	13:50	50.21549	-4.32924	48.9			
Camera	BOX1_T3	CIFCA_EDD_BOX1_T320170825__13_51_53__0044.JPG	25/08/2017	13:51	50.21552	-4.32947	49.2			
Camera	BOX1_T3	CIFCA_EDD_BOX1_T320170825__13_52_54__0045.JPG	25/08/2017	13:52	50.21557	-4.32973	49.4			
Camera	BOX1_T3	CIFCA_EDD_BOX1_T320170825__13_53_57__0046.JPG	25/08/2017	13:53	50.21561	-4.32997	49.6			
Camera	BOX1_T3	CIFCA_EDD_BOX1_T320170825__13_54_55__0047.JPG	25/08/2017	13:54	50.21563	-4.33021	49.9			
Camera	BOX1_T3	CIFCA_EDD_BOX1_T320170825__13_55_57__0048.JPG	25/08/2017	13:55	50.21566	-4.33043	50.7			
Camera	BOX1_T3	CIFCA_EDD_BOX1_T320170825__13_56_56__0049.JPG	25/08/2017	13:56	50.21568	-4.33067	50.2			
Camera	BOX1_T3	CIFCA_EDD_BOX1_T320170825__13_57_57__0050.JPG	25/08/2017	13:58	50.21571	-4.33092	49.9			
Camera	BOX1_T3	CIFCA_EDD_BOX1_T320170825__13_58_58__0051.JPG	25/08/2017	13:59	50.21574	-4.33119	49.6			
Camera	BOX1_T3	CIFCA_EDD_BOX1_T320170825__13_59_57__0052.JPG	25/08/2017	13:59	50.21577	-4.33145	51			
Camera	BOX1_T3	CIFCA_EDD_BOX1_T320170825__14_00_56__0053.JPG	25/08/2017	14:00	50.21580	-4.33168	50			
Camera	BOX1_T3	CIFCA_EDD_BOX1_T320170825__14_01_57__0054.JPG	25/08/2017	14:01	50.21583	-4.33194	50.1			
Camera	BOX1_T3	CIFCA_EDD_BOX1_T320170825__14_02_58__0055.JPG	25/08/2017	14:03	50.21585	-4.33216	49.8			
Camera	BOX1_T3	CIFCA_EDD_BOX1_T320170825__14_03_57__0056.JPG	25/08/2017	14:03	50.21588	-4.33240	49.5			
Camera	BOX1_T3	CIFCA_EDD_BOX1_T320170825__14_04_57__0057.JPG	25/08/2017	14:04	50.21589	-4.33265	49.5			
Camera	BOX1_T3	CIFCA_EDD_BOX1_T320170825__14_05_56__0058.JPG	25/08/2017	14:05	50.21591	-4.33288	49.7			
Camera	BOX1_T3	CIFCA_EDD_BOX1_T320170825__14_06_56__0059.JPG	25/08/2017	14:06	50.21594	-4.33313	49.5			
Camera	BOX1_T3	CIFCA_EDD_BOX1_T320170825__14_07_56__0060.JPG	25/08/2017	14:07	50.21598	-4.33336	49.7			
Camera	BOX1_T3	CIFCA_EDD_BOX1_T320170825__14_08_56__0061.JPG	25/08/2017	14:08	50.21602	-4.33362	49.5			
Camera	BOX1_T3	CIFCA_EDD_BOX1_T320170825__14_09_56__0062.JPG	25/08/2017	14:09	50.21605	-4.33388	49.6			
Camera	BOX1_T3	CIFCA_EDD_BOX1_T320170825__14_10_59__0063.JPG	25/08/2017	14:10	50.21611	-4.33413	49.5			
Camera	BOX1_T3	CIFCA_EDD_BOX1_T320170825__14_11_59__0064.JPG	25/08/2017	14:11	50.21616	-4.33439	50			
Camera	BOX1_T3	CIFCA_EDD_BOX1_T320170825__14_12_55__0065.JPG	25/08/2017	14:12	50.21621	-4.33462	49.5			
Camera	BOX1_T4	CIFCA_EDD_BOX1_T420170825__14_30_39__0001.JPG	25/08/2017	14:30	50.21463	-4.33353	49			

Cornwall IFCA							Camera Positioning Summary			
Area		Eddystone Reef	Project name		20170704 and 20170825 Eddystone DDV Field Report					
Vessel		Tiger Lily	Sampling position		Starboard davit					
Projection										
Sample type	Station number	Image_ID	Date	Time	Latitude (decimal degrees)	Longitude (decimal degrees)	Depth (m)	Substrate	Comments	
Camera	BOX1_T4	CIFCA_EDD_BOX1_T420170825__14_31_50__0002.JPG	25/08/2017	14:31			49.1			
Camera	BOX1_T4	CIFCA_EDD_BOX1_T420170825__14_32_18__0003.JPG	25/08/2017	14:32	50.21468	-4.33400	48.8			
Camera	BOX1_T4	CIFCA_EDD_BOX1_T420170825__14_32_51__0004.JPG	25/08/2017	14:32	50.21469	-4.33419	49.1			
Camera	BOX1_T4	CIFCA_EDD_BOX1_T420170825__14_33_51__0005.JPG	25/08/2017	14:33	50.21469	-4.33443	48.8			
Camera	BOX1_T4	CIFCA_EDD_BOX1_T420170825__14_34_51__0006.JPG	25/08/2017	14:34	50.21468	-4.33467	50.2			
Camera	BOX1_T4	CIFCA_EDD_BOX1_T420170825__14_35_54__0007.JPG	25/08/2017	14:35	50.21467	-4.33492	48.8			
Camera	BOX1_T4	CIFCA_EDD_BOX1_T420170825__14_36_52__0008.JPG	25/08/2017	14:36	50.21468	-4.33507	48.6			
Camera	BOX1_T4	CIFCA_EDD_BOX1_T420170825__14_37_53__0009.JPG	25/08/2017	14:37	50.21468	-4.33529	48.6			
Camera	BOX1_T4	CIFCA_EDD_BOX1_T420170825__14_38_51__0010.JPG	25/08/2017	14:38	50.21469	-4.33552	49			
Camera	BOX1_T4	CIFCA_EDD_BOX1_T420170825__14_39_55__0011.JPG	25/08/2017	14:39	50.21469	-4.33578	49.4			
Camera	BOX1_T4	CIFCA_EDD_BOX1_T420170825__14_40_51__0012.JPG	25/08/2017	14:40	50.21472	-4.33601	48.5			
Camera	BOX1_T4	CIFCA_EDD_BOX1_T420170825__14_41_54__0013.JPG	25/08/2017	14:41	50.21473	-4.33624	48.9			
Camera	BOX1_T4	CIFCA_EDD_BOX1_T420170825__14_42_51__0014.JPG	25/08/2017	14:42	50.21473	-4.33647	49.9			
Camera	BOX1_T4	CIFCA_EDD_BOX1_T420170825__14_43_52__0015.JPG	25/08/2017	14:44	50.21475	-4.33672	48			
Camera	BOX1_T4	CIFCA_EDD_BOX1_T420170825__14_44_53__0016.JPG	25/08/2017	14:44	50.21476	-4.33696	48.4			
Camera	BOX1_T4	CIFCA_EDD_BOX1_T420170825__14_45_51__0017.JPG	25/08/2017	14:46	50.21477	-4.33719	48.7			
Camera	BOX1_T4	CIFCA_EDD_BOX1_T420170825__14_46_41__0018.JPG	25/08/2017	14:46	50.21480	-4.33740	48.3			
Camera	BOX1_T4	CIFCA_EDD_BOX1_T420170825__14_47_50__0019.JPG	25/08/2017	14:47	50.21481	-4.33767	48.2			
Camera	BOX1_T4	CIFCA_EDD_BOX1_T420170825__14_48_51__0020.JPG	25/08/2017	14:48	50.21485	-4.33790	48.8			
Camera	BOX1_T4	CIFCA_EDD_BOX1_T420170825__14_49_53__0021.JPG	25/08/2017	14:49	50.21492	-4.33814	48.7			
Camera	BOX1_T4	CIFCA_EDD_BOX1_T420170825__14_50_52__0022.JPG	25/08/2017	14:50	50.21501	-4.33839	48.4			
Camera	BOX1_T4	CIFCA_EDD_BOX1_T420170825__14_51_50__0023.JPG	25/08/2017	14:51	50.21509	-4.33862	48			
Camera	BOX1_T4	CIFCA_EDD_BOX1_T420170825__14_52_52__0024.JPG	25/08/2017	14:52	50.21517	-4.33884				