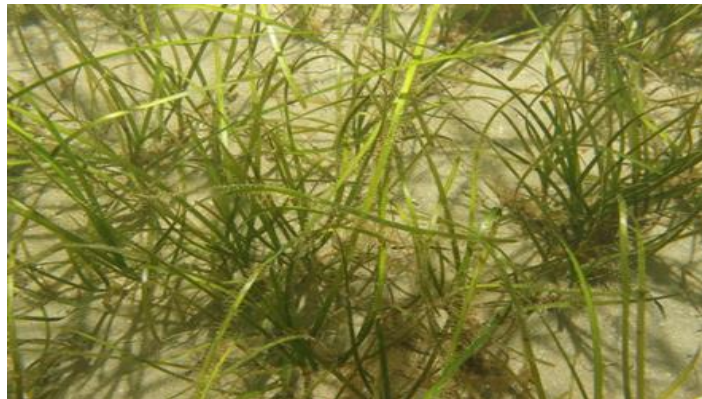




Verifying acoustic signals for habitat classification within St.Austell Bay, Verman Bay and Gerrans Bay

Annex 11



Completed by: Cornwall Inshore Fisheries and Conservation Authority
(Cornwall IFCA)

Authors: Annie Jenkin, Kimara Street, Ryan Matthews, Colin Trundle, and
Hilary Naylor

Document History			
Version	Date	Author	Change
0.1	28/11/2018	A Jenkin	Document creation

Cited as:

Jenkin, A., Street, K., Matthews, R., Trundle, C. and Naylor H. 2016. Verifying acoustic signals for habitat classification within St.Austell Bay, Veryan Bay and Gerrans Bay. Annex 11. Cornwall Inshore Fisheries and Conservation Authority (Cornwall IFCA), Hayle.

This document has been produced by Cornwall Inshore Fisheries and Conservation Authority (Cornwall IFCA)

Cornwall IFCA
Chi Gallos
Hayle Marine Renewables Business Park
North Quay
Hayle
Cornwall
TR27 4DD

Tel: 01736 336842
Email: enquiries@cornwall-ifca.gov.uk

Contents

1.1	Biotope mapping	1
1.1.1	Veryan Bay	1

List of Figures

Figure 1: Station overview including habitat classification with still images from a side-scan survey and drop down video survey for Site 1 Tow 1 in Veryan Bay	2
Figure 2: Station overview including habitat classification with still images from a side-scan survey and drop down video survey for Site 2 Tow 1 in Veryan Bay	3
Figure 3: Station overview including habitat classification with still images from a side-scan survey and drop down video survey for Site 3 Tow 1 in Veryan Bay	4
Figure 4: Station overview including habitat classification with still images from a side-scan survey and drop down video survey for Site 4 Tow 1 in Veryan Bay	5
Figure 5: Station overview including habitat classification with still images from a side-scan survey and drop down video survey for Site 5 Tow 1 in Veryan Bay	6
Figure 6: Station overview including habitat classification with still images from a side-scan survey and drop down video survey for Site 6 Tow 1 in Veryan Bay	7
Figure 7: Station overview including habitat classification with still images from a side-scan survey and drop down video survey for Site 7 Tow 1 in Veryan Bay	8
Figure 8: Station overview including habitat classification with still images from a side-scan survey and drop down video survey for Site 8 Tow 1 in Veryan Bay	9
Figure 9: Station overview including habitat classification with still images from a side-scan survey and drop down video survey for Site 9 Tow 1 in Veryan Bay	10
Figure 10: Station overview including habitat classification with still images from a side-scan survey and drop down video survey for Site 10 Tow 1 in Veryan Bay	11
Figure 11: Station overview including habitat classification with still images from a side-scan survey and drop down video survey for Site 11 Tow 1 in Veryan Bay	12
Figure 12: Station overview including habitat classification with still images from a side-scan survey and drop down video survey for Site 12 Tow 1 in Veryan Bay	13
Figure 13: Station overview including habitat classification with still images from a side-scan survey and drop down video survey for Site SA Tow 1 in Veryan Bay	14
Figure 14: Station overview including habitat classification with still images from a side-scan survey and drop down video survey for Site SB Tow 1 in Veryan Bay	15

This document is Annex 11 for report 'Verifying acoustic signals for habitat classification within St.Austell Bay, Veryan Bay and Gerrans Bay. 2016 Summary Report'.

1.1 Biotope mapping

1.1.1 Veryan Bay

The biotope map with habitat classification for Veryan Bay for each individual site with representative still images is shown in Figure 1 to Figure 14.

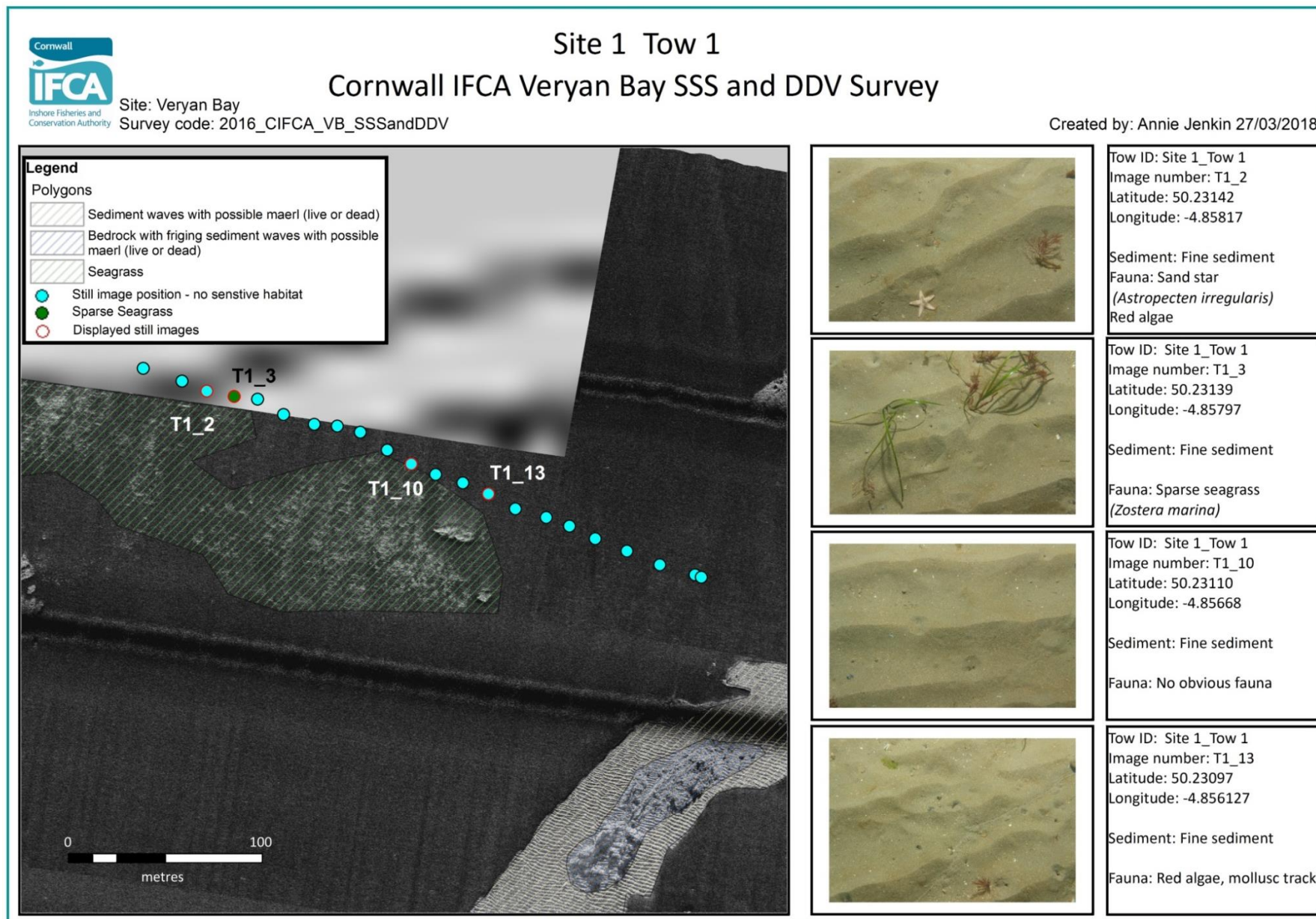


Figure 1: Station overview including habitat classification with still images from a side-scan survey and drop down video survey for Site 1 Tow 1 in Veryan Bay

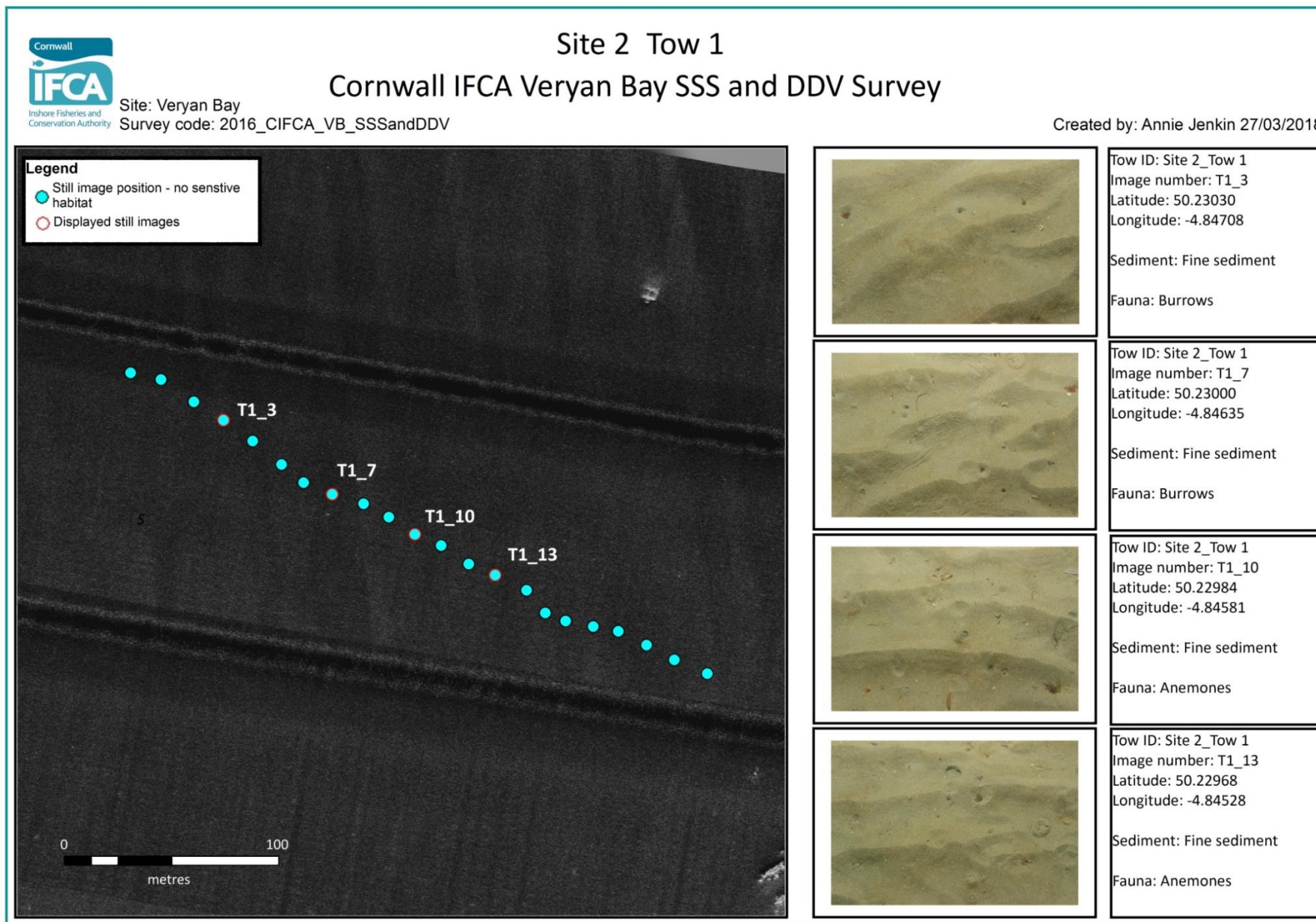


Figure 2: Station overview including habitat classification with still images from a side-scan survey and drop down video survey for Site 2 Tow 1 in Veryan Bay

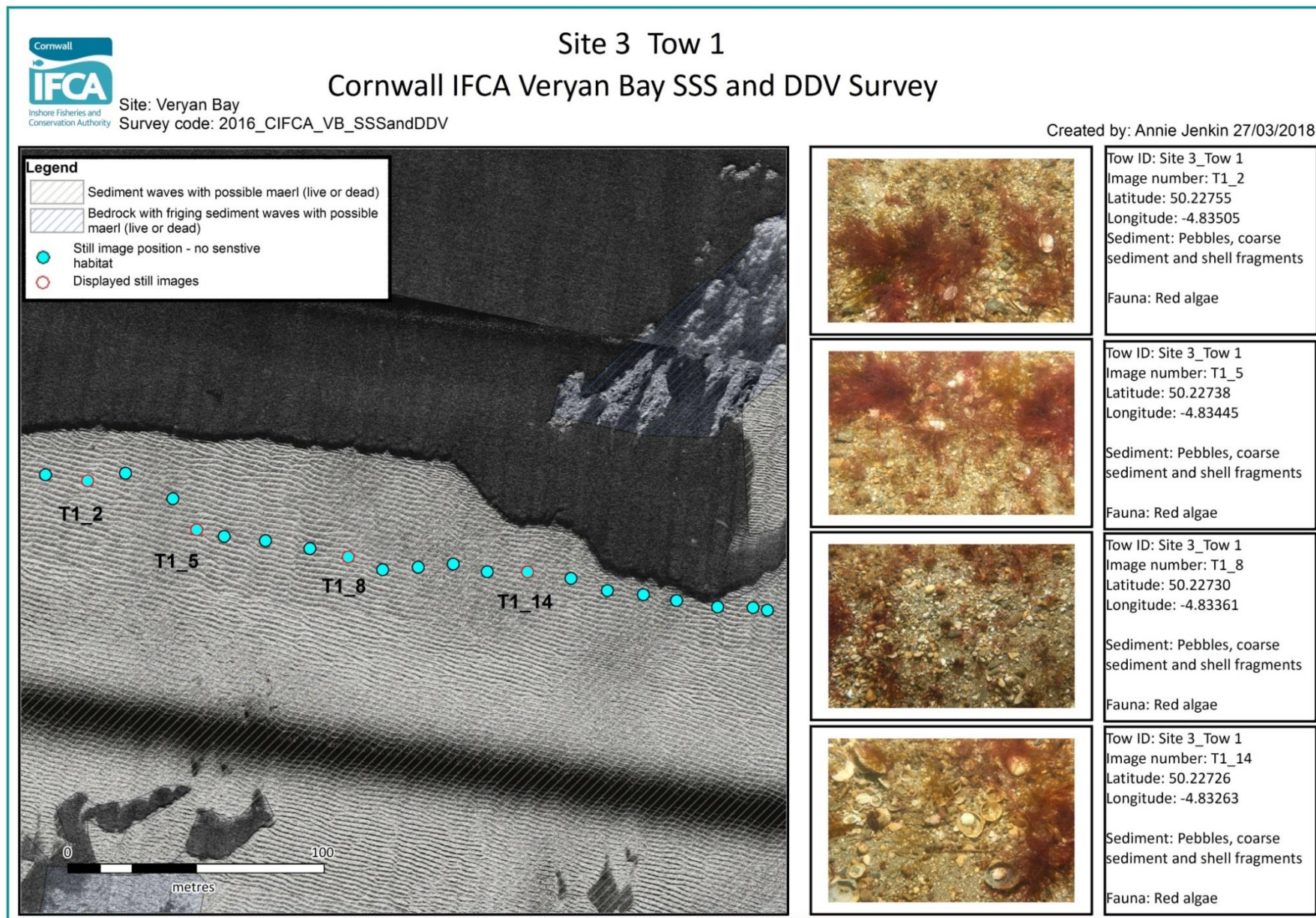


Figure 3: Station overview including habitat classification with still images from a side-scan survey and drop down video survey for Site 3 Tow 1 in Veryan Bay

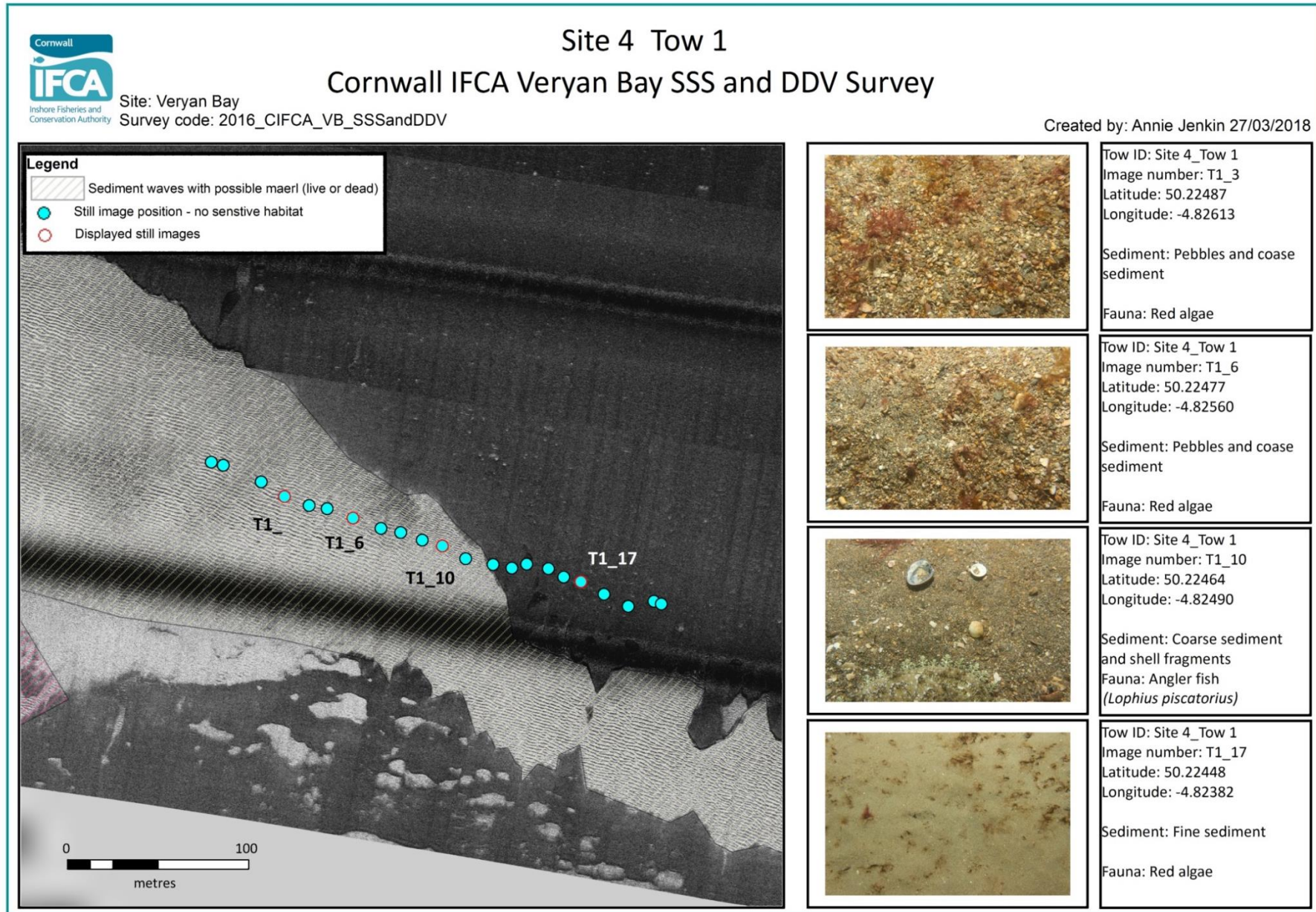


Figure 4: Station overview including habitat classification with still images from a side-scan survey and drop down video survey for Site 4 Tow 1 in Verman Bay

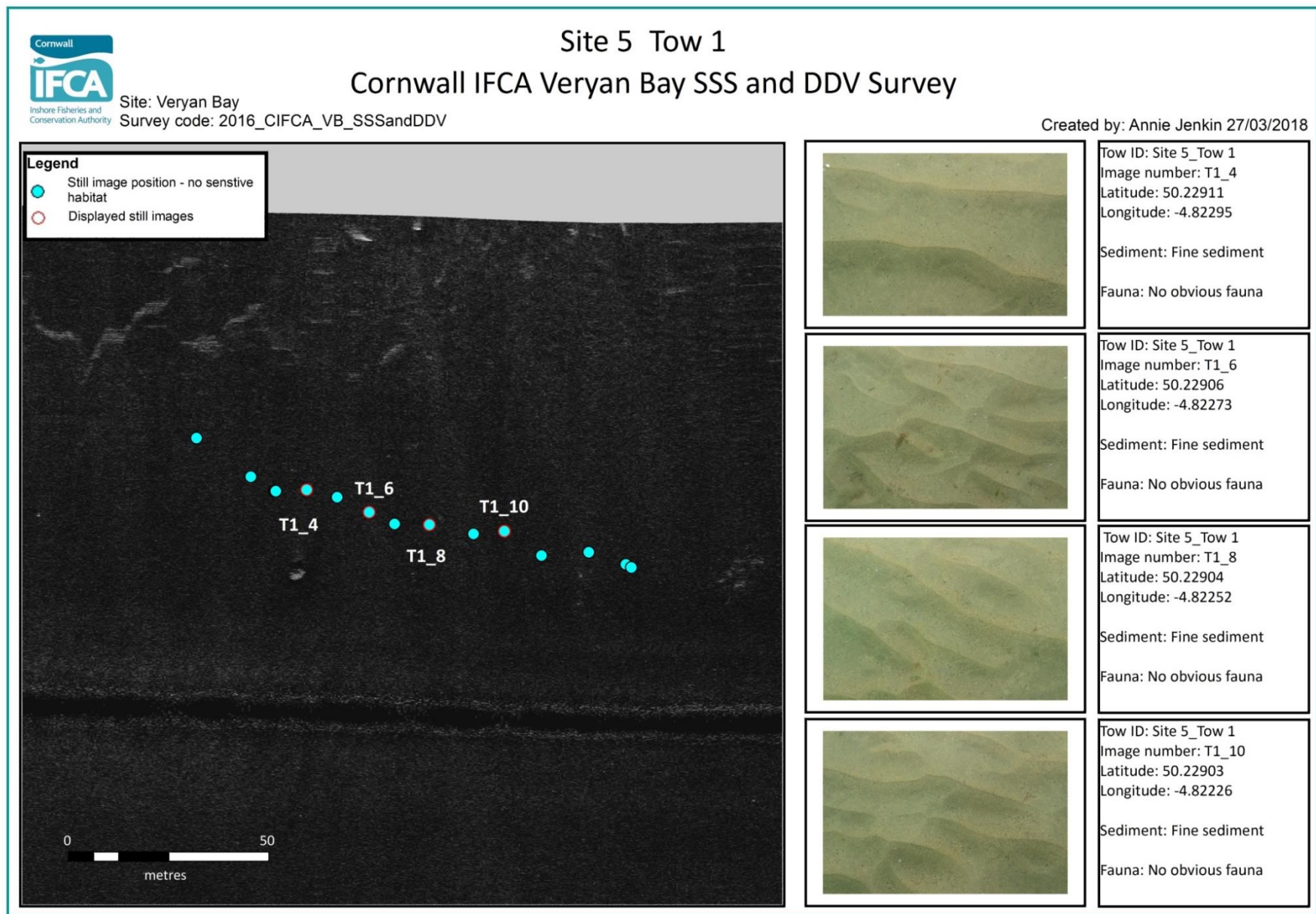


Figure 5: Station overview including habitat classification with still images from a side-scan survey and drop down video survey for Site 5 Tow 1 in Verman Bay

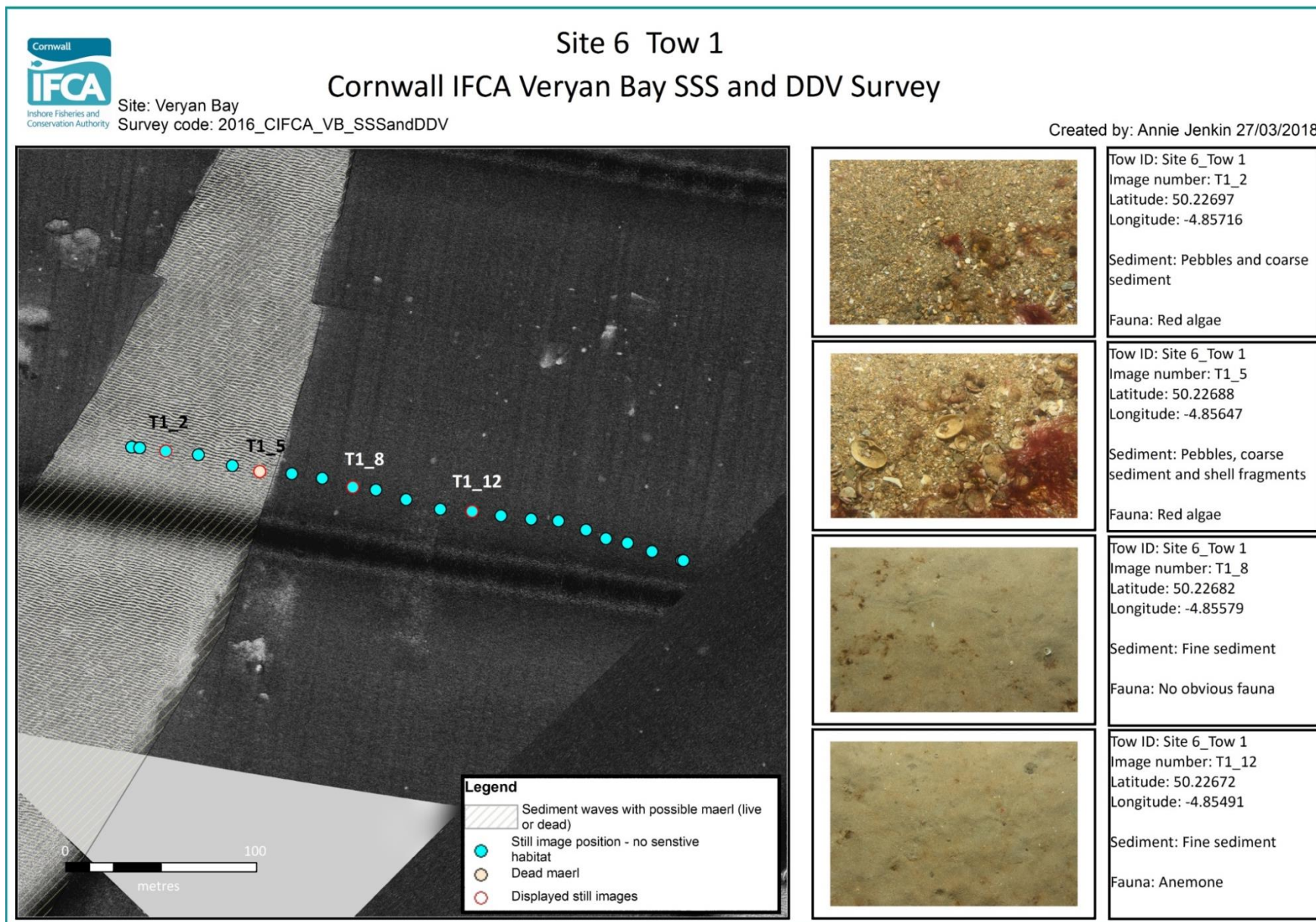


Figure 6: Station overview including habitat classification with still images from a side-scan survey and drop down video survey for Site 6 Tow 1 in Verman Bay

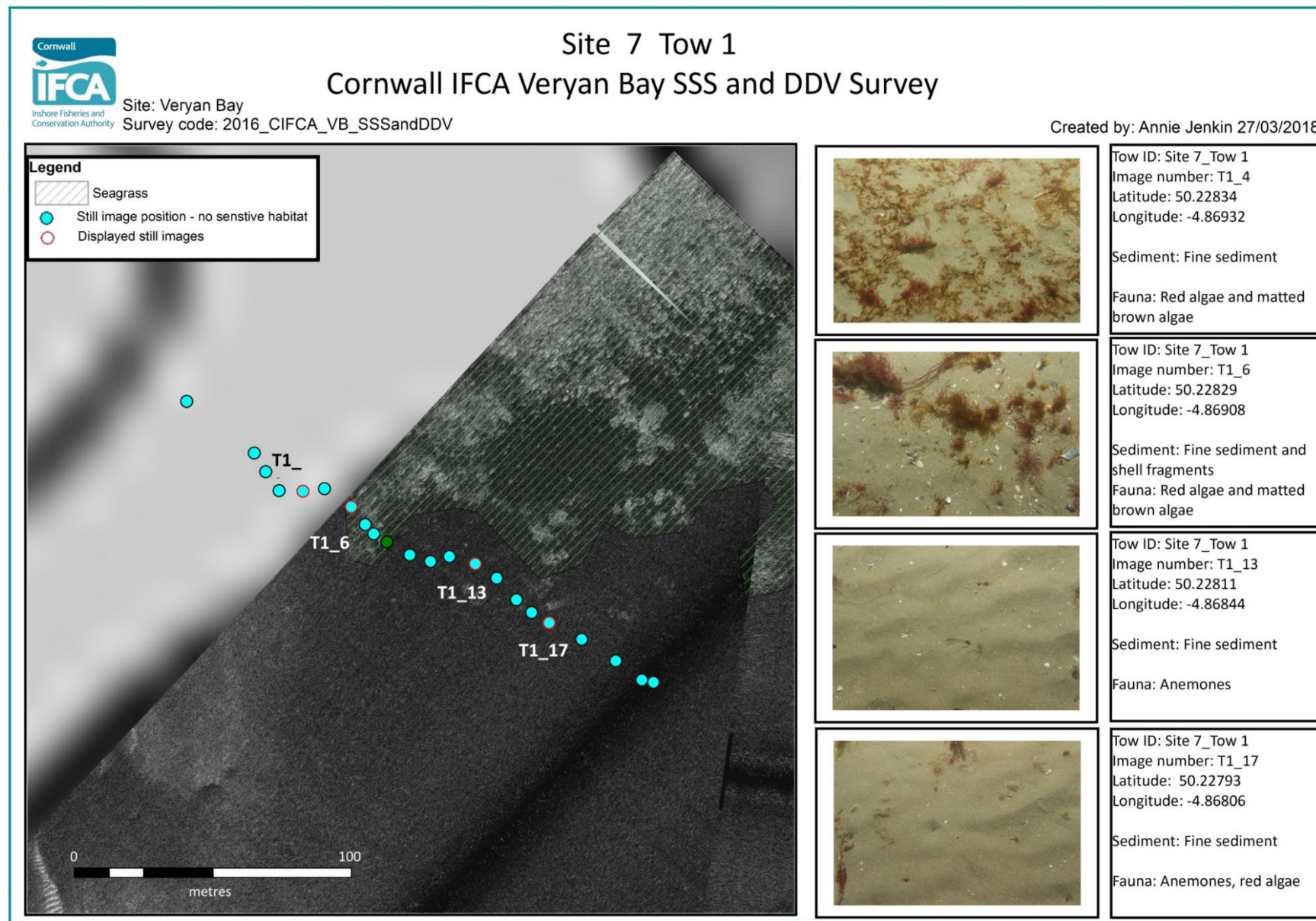


Figure 7: Station overview including habitat classification with still images from a side-scan survey and drop down video survey for Site 7 Tow 1 in Veryan Bay

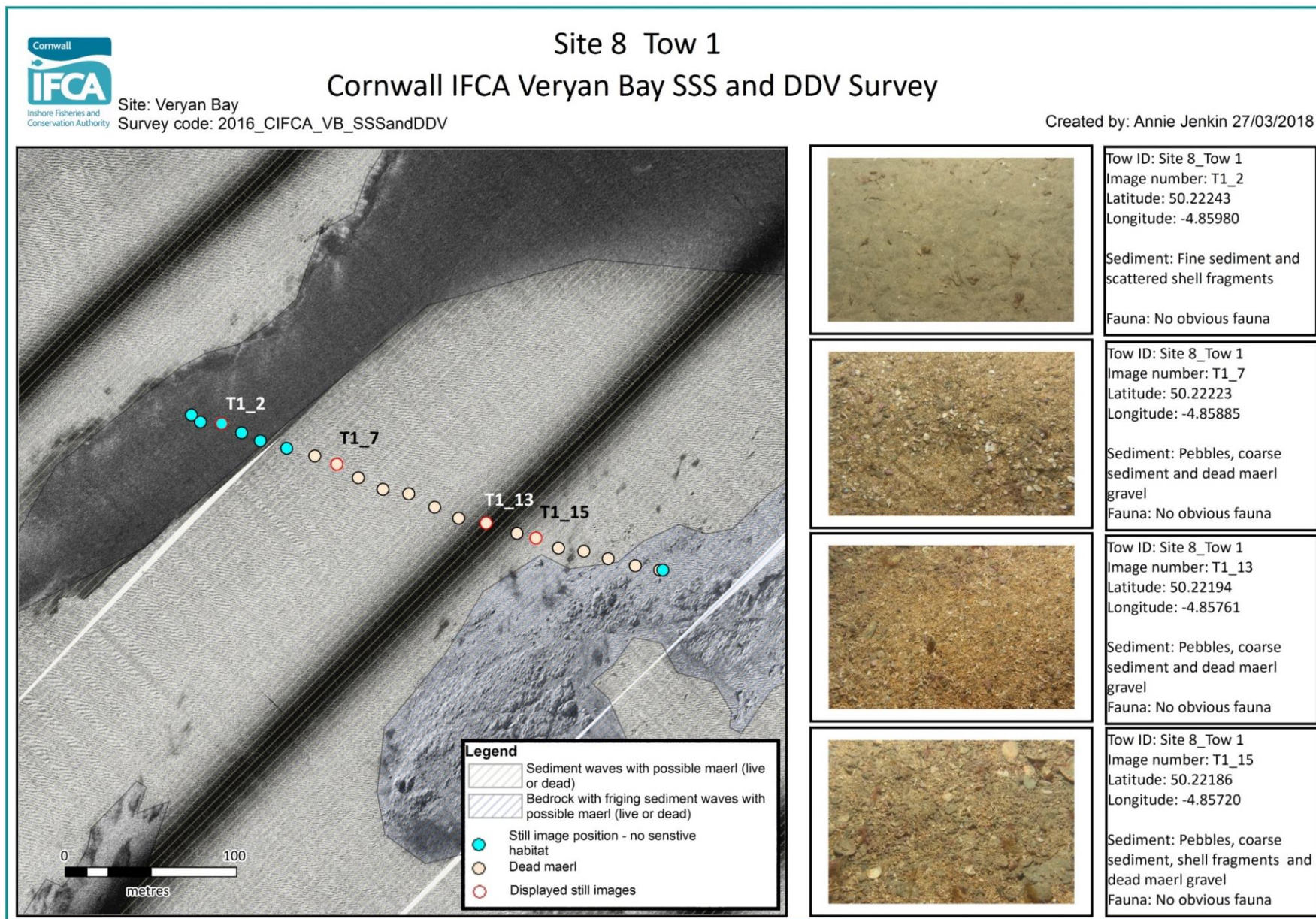


Figure 8: Station overview including habitat classification with still images from a side-scan survey and drop down video survey for Site 8 Tow 1 in Verman Bay

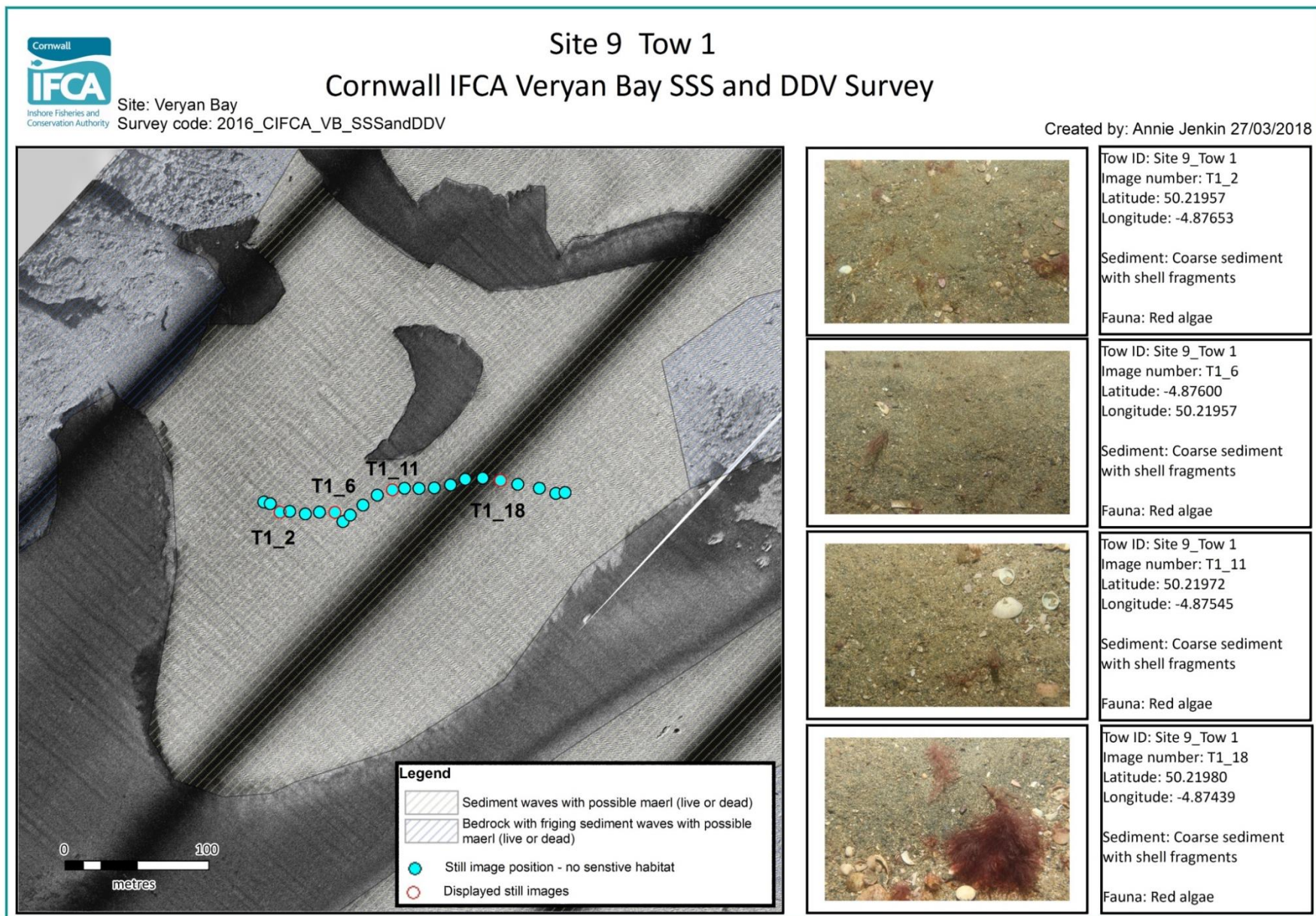


Figure 9: Station overview including habitat classification with still images from a side-scan survey and drop down video survey for Site 9 Tow 1 in Veryan Bay

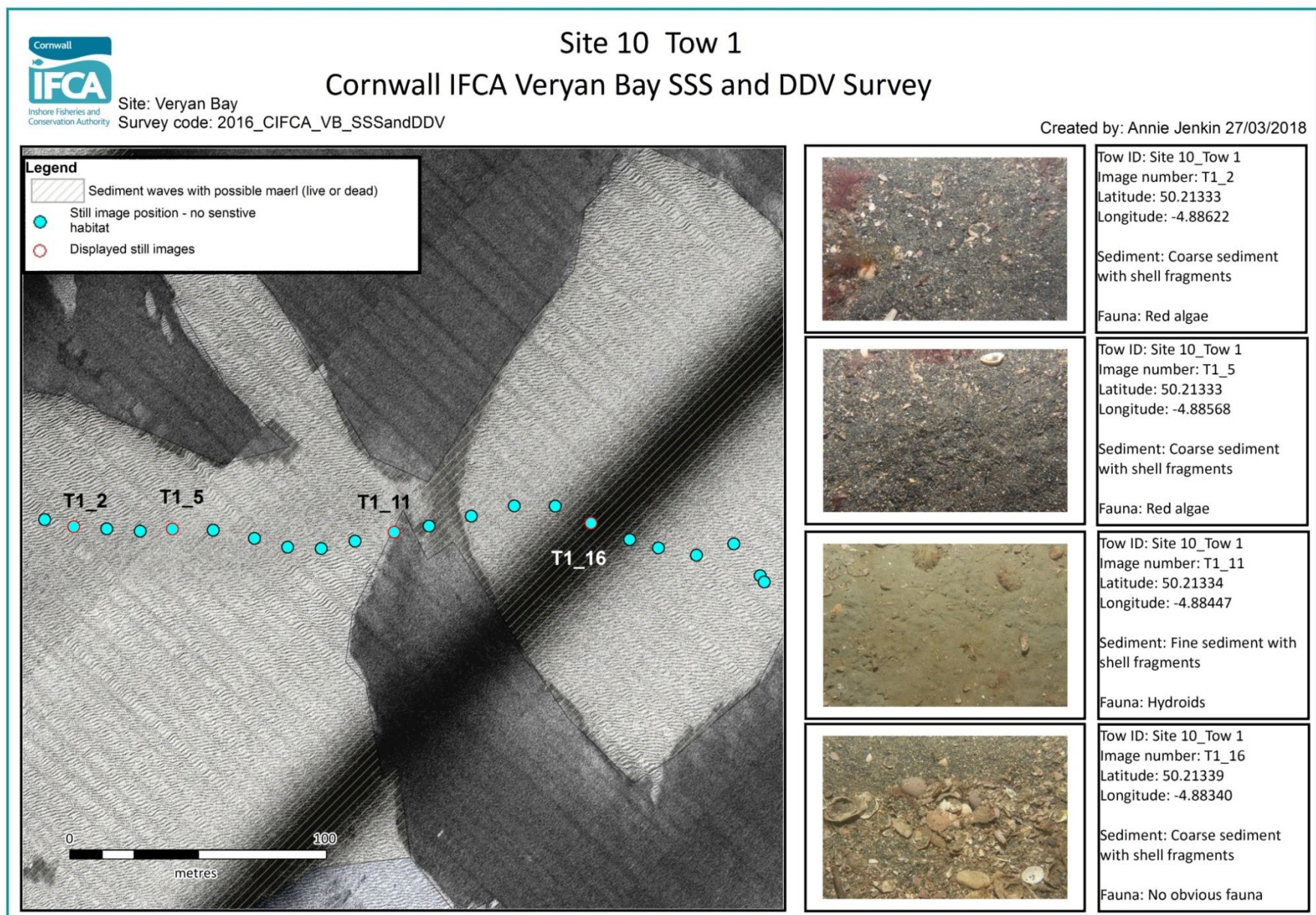


Figure 10: Station overview including habitat classification with still images from a side-scan survey and drop down video survey for Site 10 Tow 1 in Veryan Bay

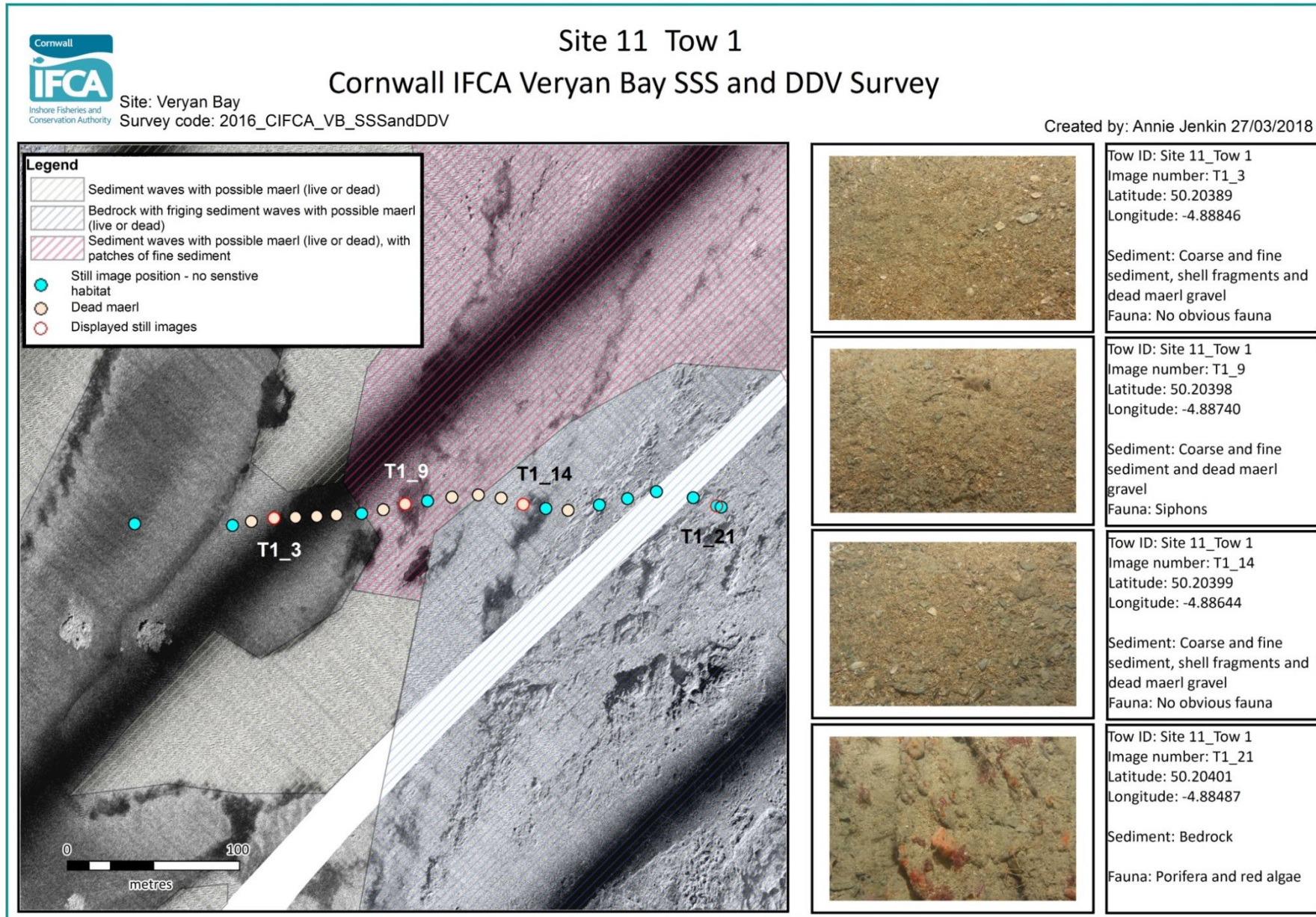


Figure 11: Station overview including habitat classification with still images from a side-scan survey and drop down video survey for Site 11 Tow 1 in Veryan Bay

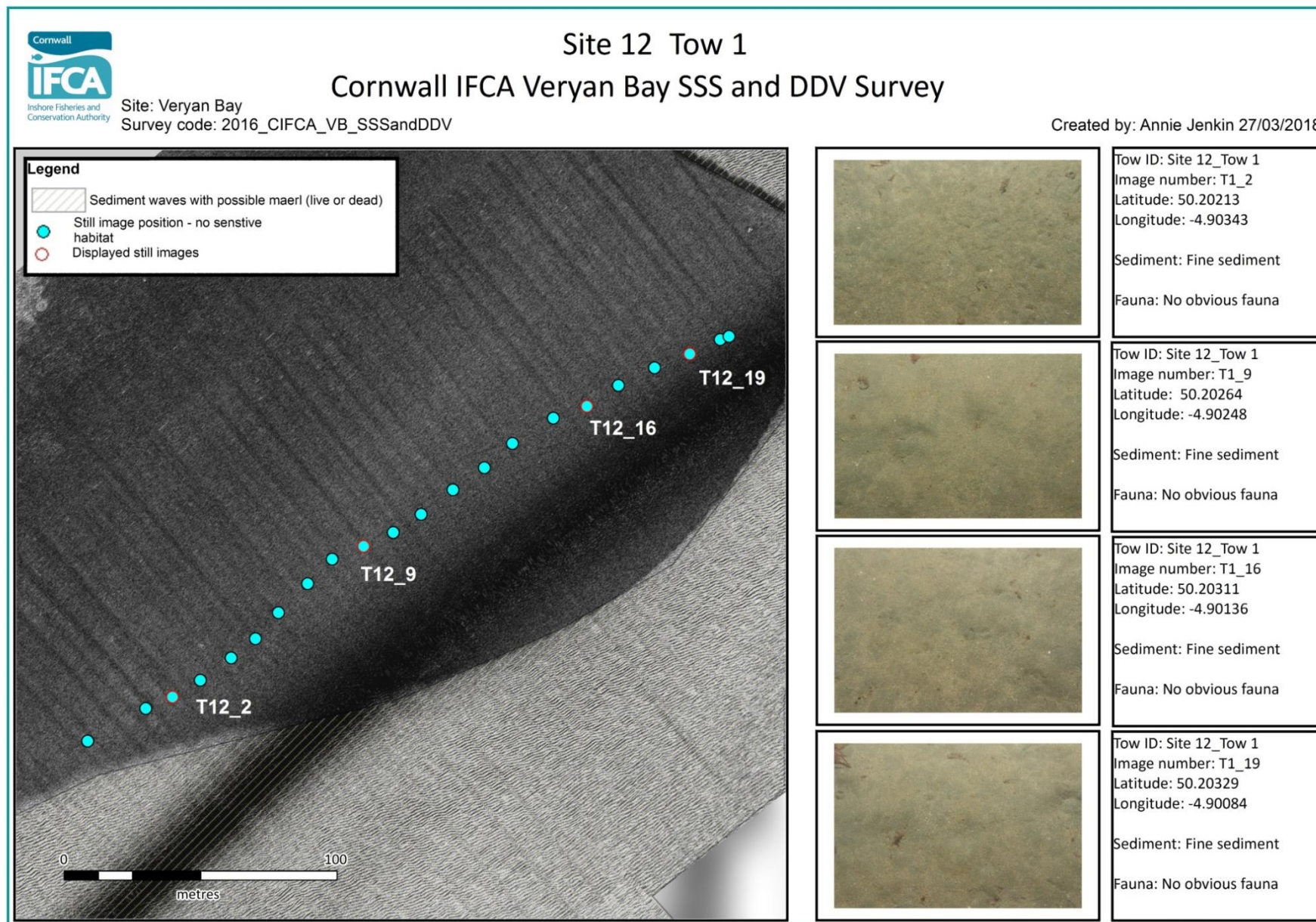


Figure 12: Station overview including habitat classification with still images from a side-scan survey and drop down video survey for Site 12 Tow 1 in Veryan Bay

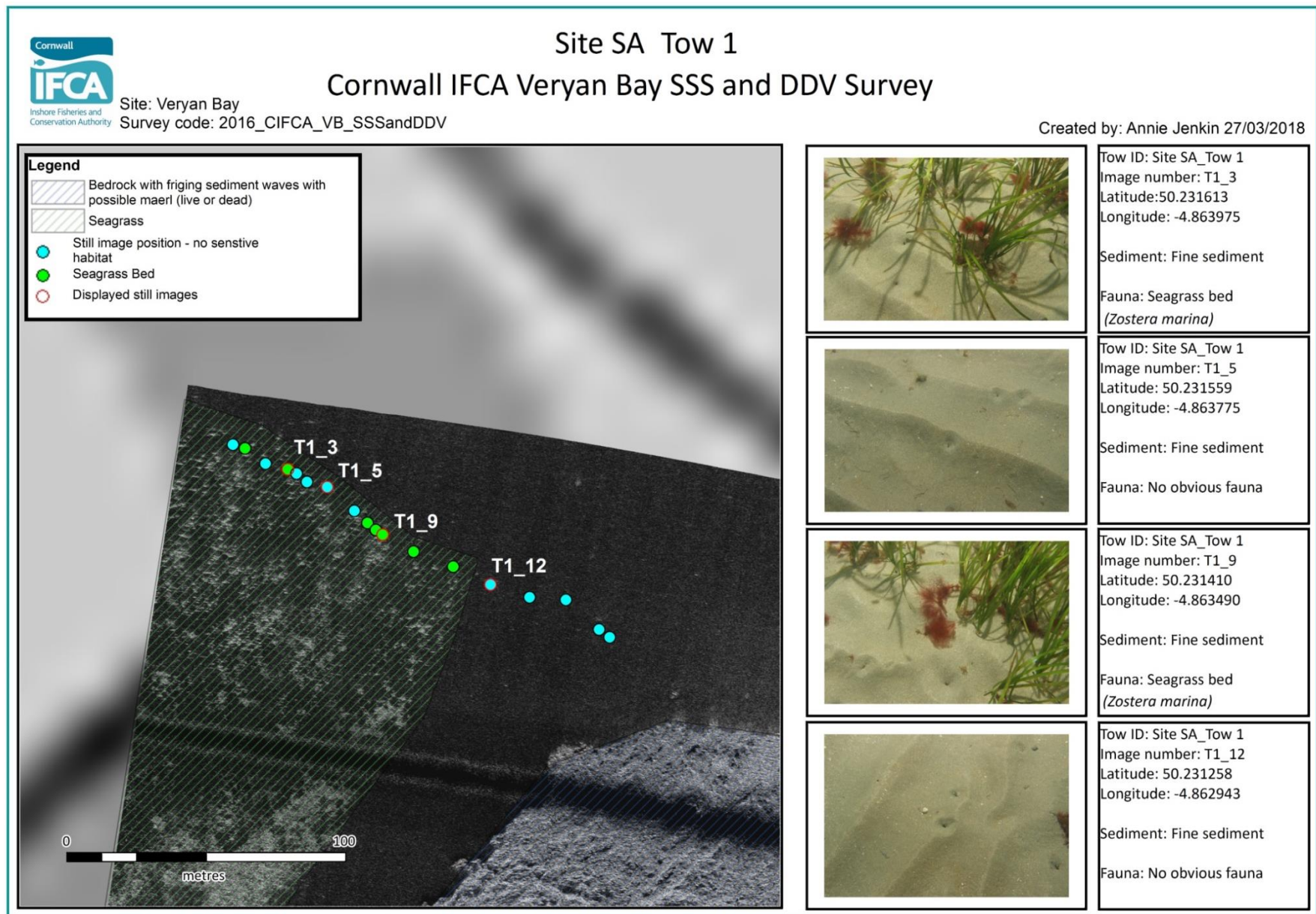


Figure 13: Station overview including habitat classification with still images from a side-scan survey and drop down video survey for Site SA Tow 1 in Veryan Bay

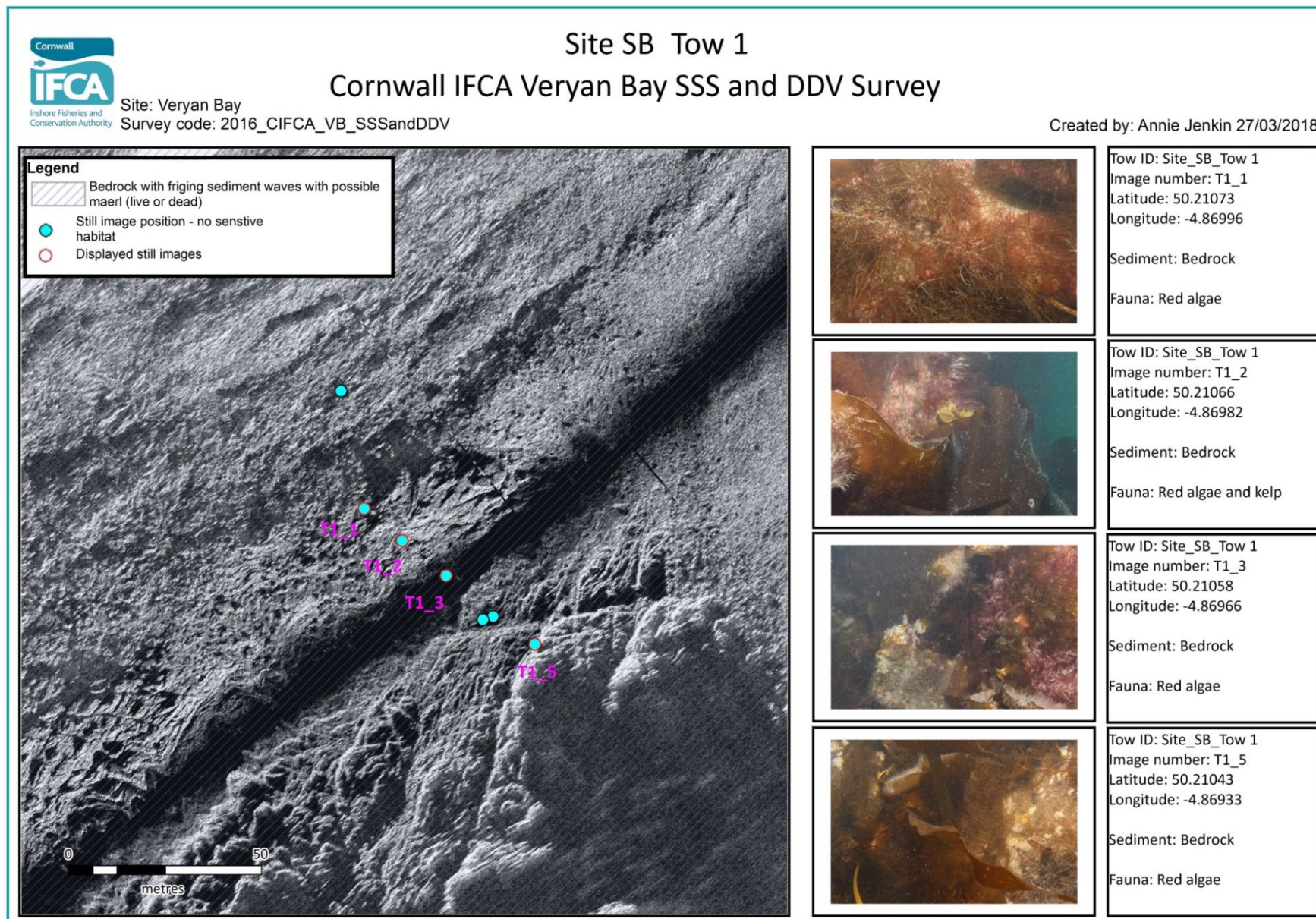


Figure 14: Station overview including habitat classification with still images from a side-scan survey and drop down video survey for Site SB Tow 1 in Veryan Bay