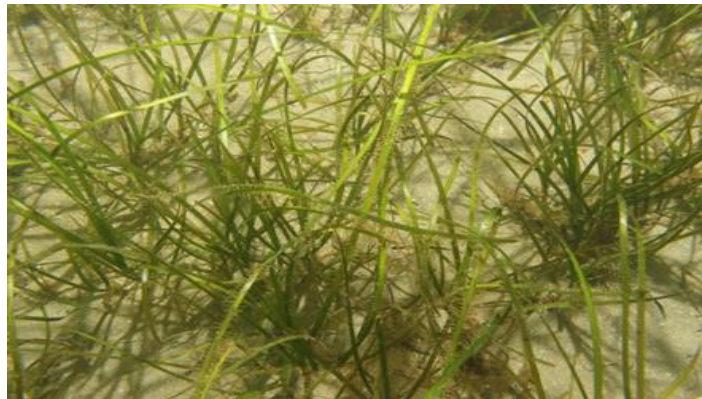




Verifying acoustic signals for habitat classification within St.Austell Bay, Verman Bay and Gerrans Bay

Annex 9



Completed by: Cornwall Inshore Fisheries and Conservation Authority
(Cornwall IFCA)

Authors: Annie Jenkin, Kimara Street, Ryan Matthews, Colin Trundle, and
Hilary Naylor

Document History			
Version	Date	Author	Change
0.1	28/11/2018	A Jenkin	Document creation

Cited as:

Jenkin, A., Street, K., Matthews, R., Trundle, C. and Naylor H. 2016. Verifying acoustic signals for habitat classification within St.Austell Bay, Veryan Bay and Gerrans Bay. Annex 9. Cornwall Inshore Fisheries and Conservation Authority (Cornwall IFCA), Hayle.

This document has been produced by Cornwall Inshore Fisheries and Conservation Authority (Cornwall IFCA)

Cornwall IFCA
Chi Gallos
Hayle Marine Renewables Business Park
North Quay
Hayle
Cornwall
TR27 4DD

Tel: 01736 336842
Email: enquiries@cornwall-ifca.gov.uk

Contents

1.1	Biotope mapping	1
1.1.1	St.Austell Bay	1

List of Figures

Figure 1: Station overview including habitat classification with still images from a side-scan survey and drop down video survey for Site 1 Tow 1 in St.Austell Bay	2
Figure 2: Station overview including habitat classification with still images from a side-scan survey and drop down video survey for Site 1 Tow 2 in St.Austell Bay	3
Figure 3: Station overview including habitat classification with still images from a side-scan survey and drop down video survey for Site 2 Tow 1 in St.Austell Bay	4
Figure 4: Station overview including habitat classification with still images from a side-scan survey and drop down video survey for Site 3 Tow 1 in St.Austell Bay	5
Figure 5: Station overview including habitat classification with still images from a side-scan survey and drop down video survey for Site 4 Tow 1 in St.Austell Bay	6
Figure 6: Station overview including habitat classification with still images from a side-scan survey and drop down video survey for Site 5 Tow 1 in St.Austell Bay	7
Figure 7: Station overview including habitat classification with still images from a side-scan survey and drop down video survey for Site 6 Tow 1 in St.Austell Bay	8
Figure 8: Station overview including habitat classification with still images from a side-scan survey and drop down video survey for Site 7 Tow 1 in St.Austell Bay	9
Figure 9: Station overview including habitat classification with still images from a side-scan survey and drop down video survey for Site 8 Tow 1 in St.Austell Bay	10
Figure 10: Station overview including habitat classification with still images from a side-scan survey and drop down video survey for Site 9 Tow 1 in St.Austell Bay	11
Figure 11: Station overview including habitat classification with still images from a side-scan survey and drop down video survey for Site 10 Tow 1 in St.Austell Bay	12
Figure 12: Station overview including habitat classification with still images from a side-scan survey and drop down video survey for Site 10 Tow 2 in St.Austell Bay	13
Figure 13: Station overview including habitat classification with still images from a side-scan survey and drop down video survey for Site 11 Tow 1 in St.Austell Bay	14

This document is Annex 9 for report 'Verifying acoustic signals for habitat classification within St.Austell Bay, Veryan Bay and Gerrans Bay. 2016 Summary Report'.

1.1 Biotope mapping

1.1.1 St.Austell Bay

The biotope map with habitat classification for St.Austell Bay for each individual site with representative still images is shown in Figure 1 to Figure 13.

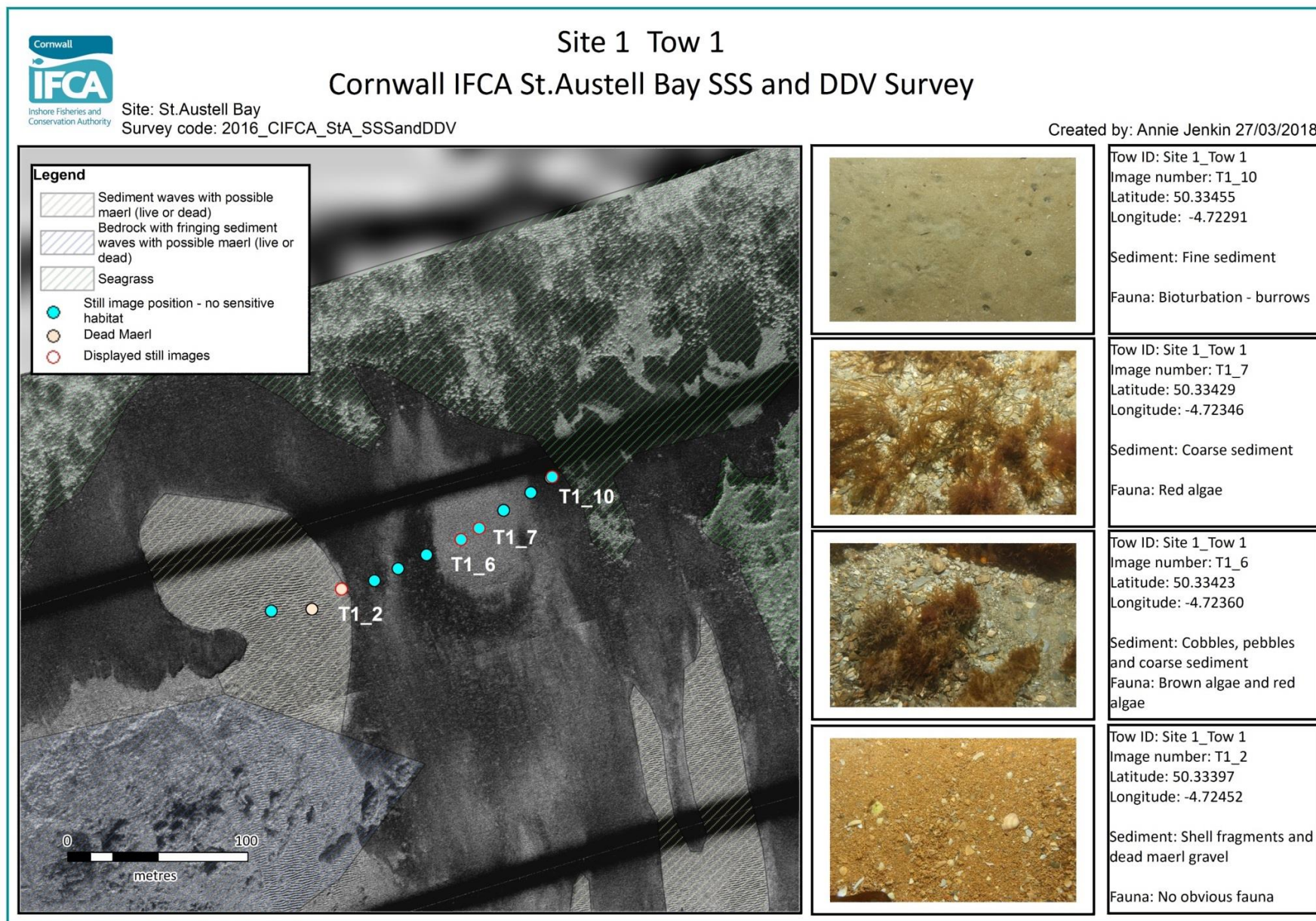


Figure 1: Station overview including habitat classification with still images from a side-scan survey and drop down video survey for Site 1 Tow 1 in St.Austell Bay

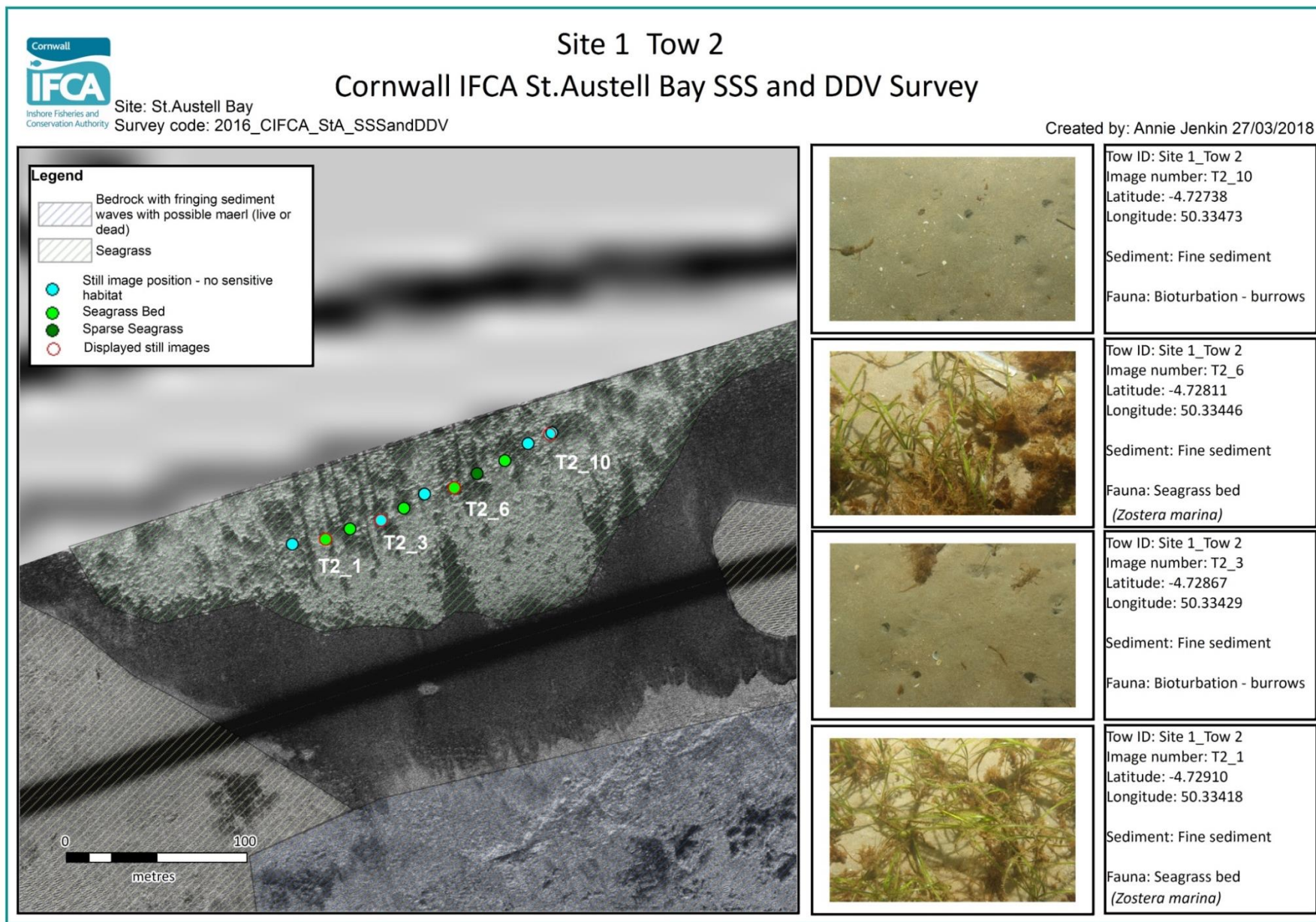


Figure 2: Station overview including habitat classification with still images from a side-scan survey and drop down video survey for Site 1 Tow 2 in St.Austell Bay

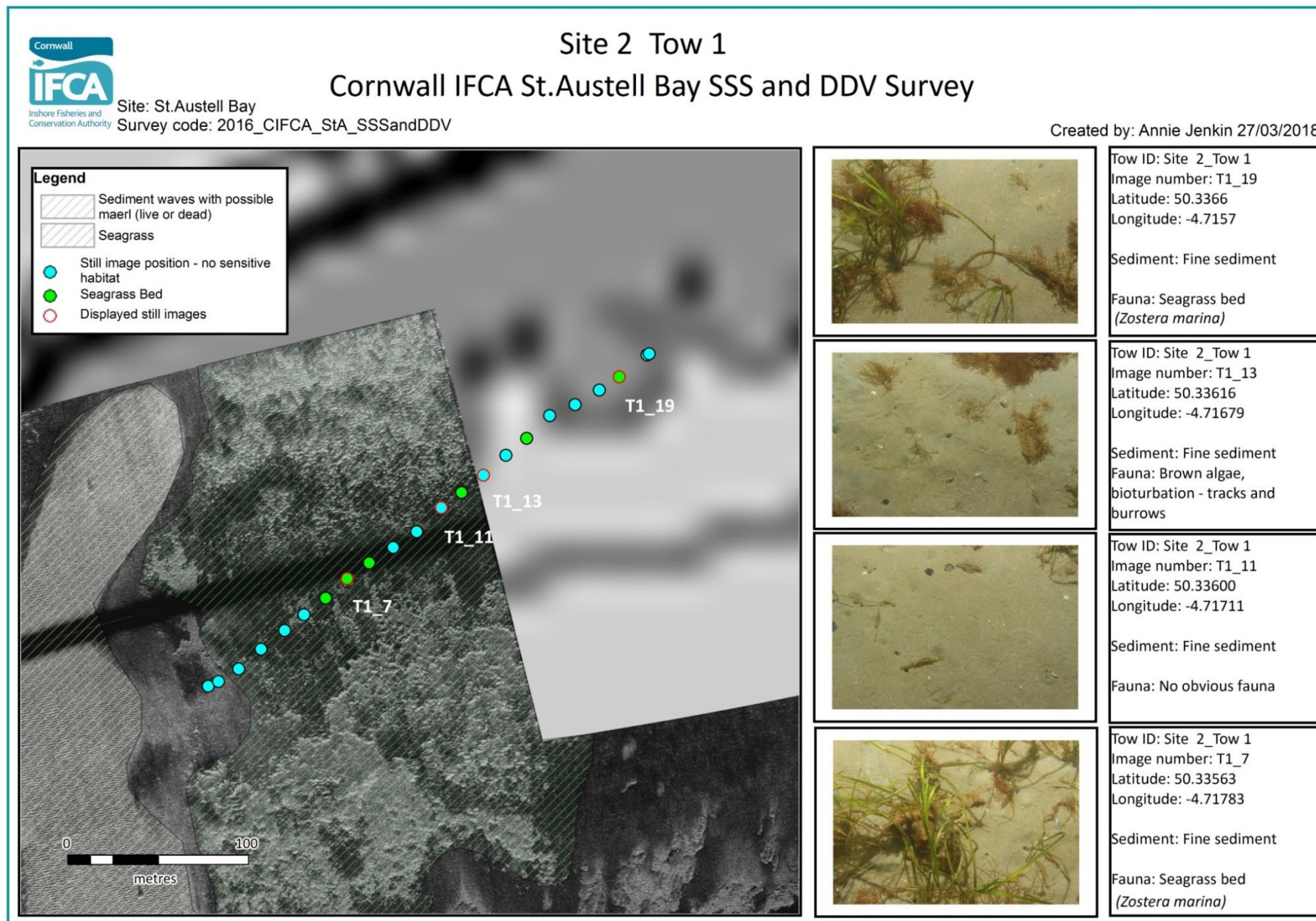


Figure 3: Station overview including habitat classification with still images from a side-scan survey and drop down video survey for Site 2 Tow 1 in St.Austell Bay

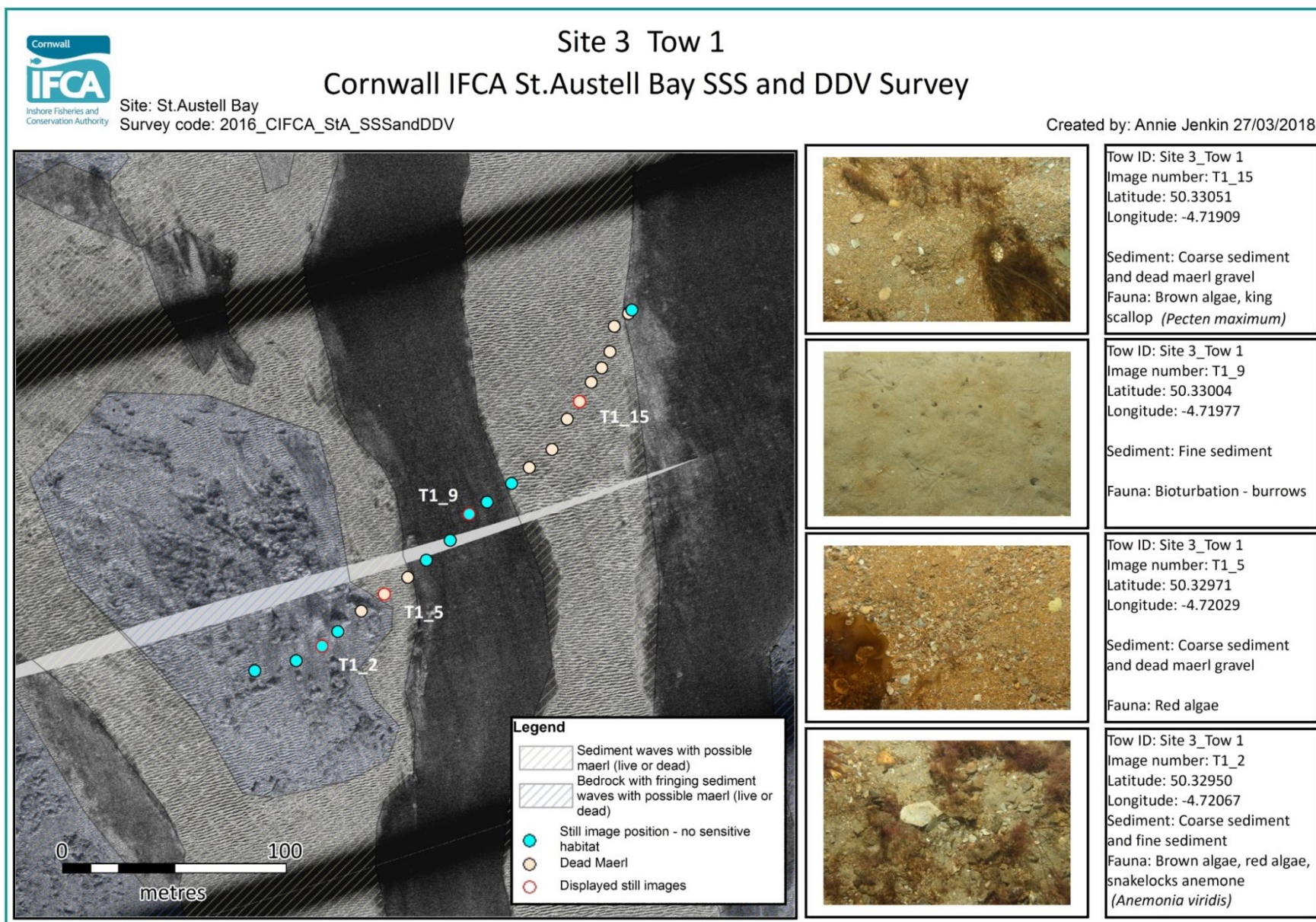


Figure 4: Station overview including habitat classification with still images from a side-scan survey and drop down video survey for Site 3 Tow 1 in St.Austell Bay

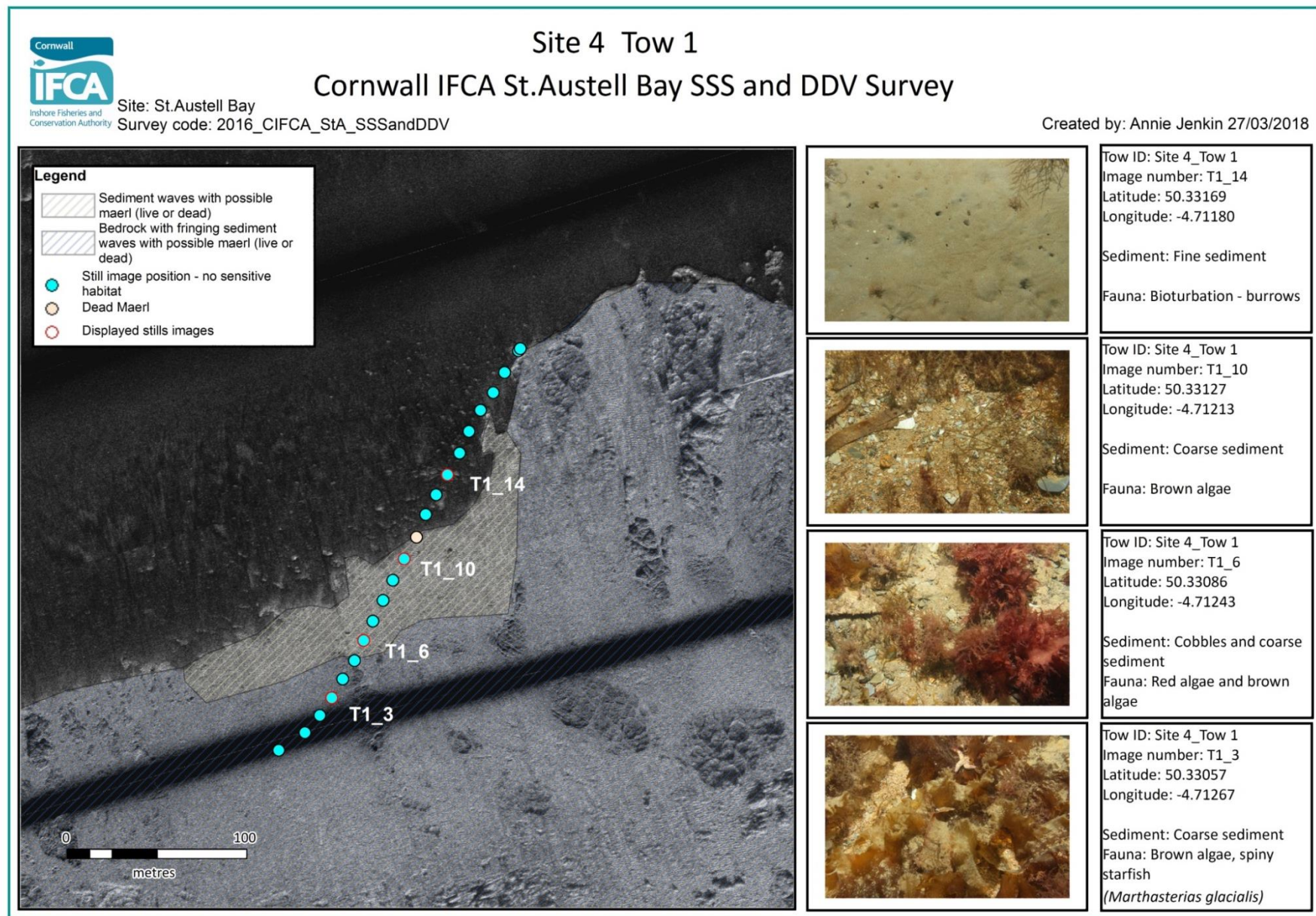


Figure 5: Station overview including habitat classification with still images from a side-scan survey and drop down video survey for Site 4 Tow 1 in St.Austell Bay

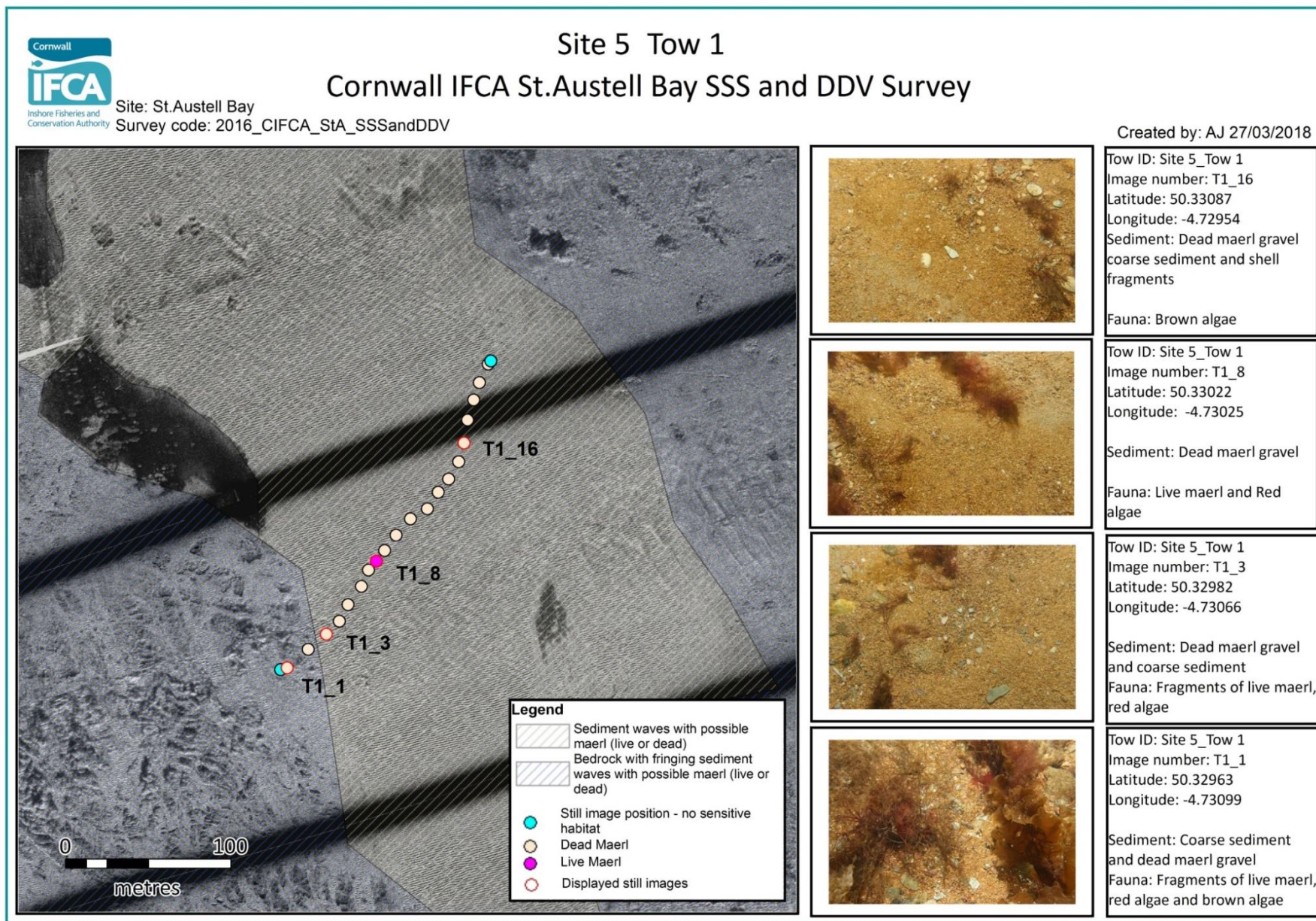


Figure 6: Station overview including habitat classification with still images from a side-scan survey and drop down video survey for Site 5 Tow 1 in St.Austell Bay

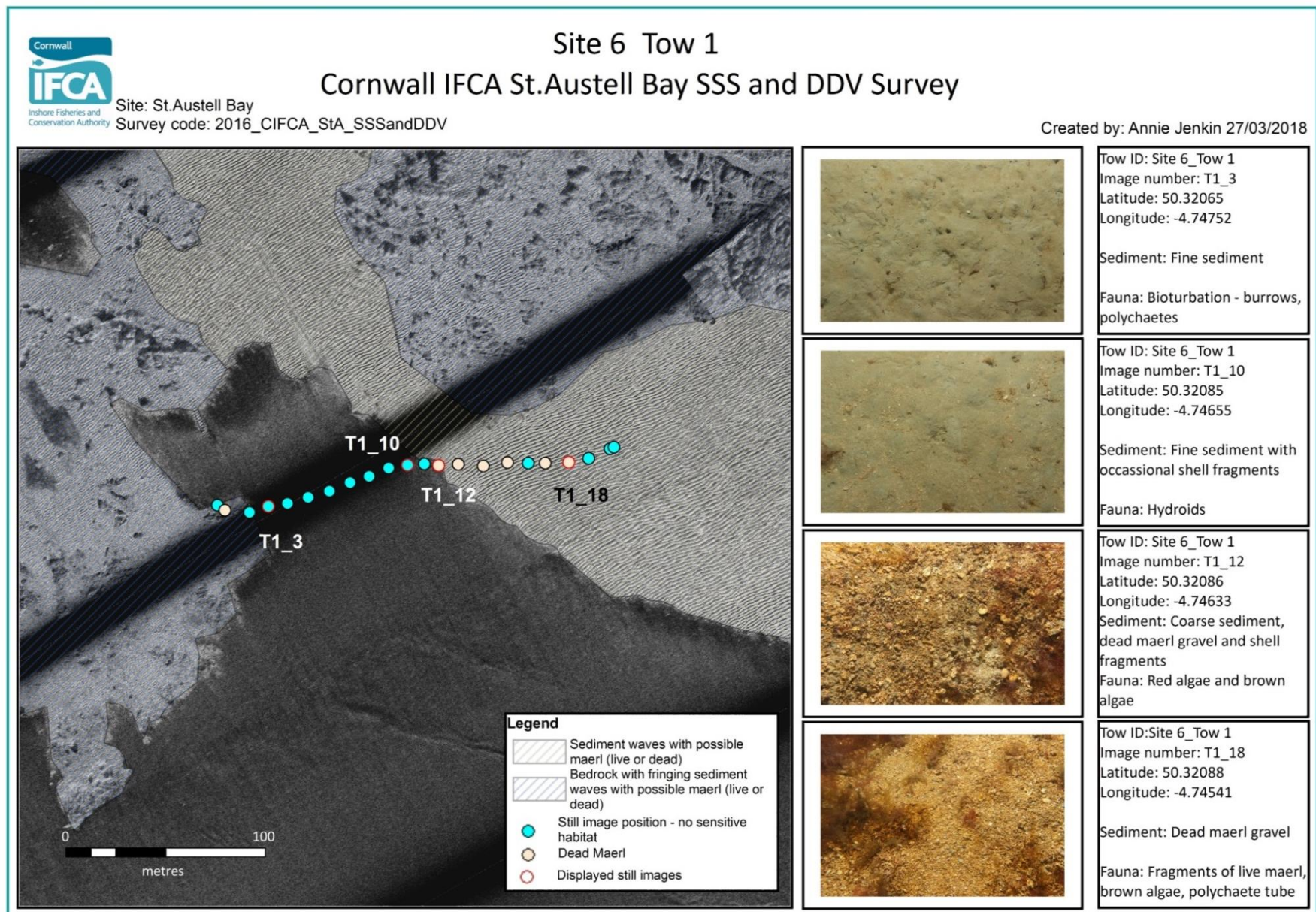


Figure 7: Station overview including habitat classification with still images from a side-scan survey and drop down video survey for Site 6 Tow 1 in St.Austell Bay

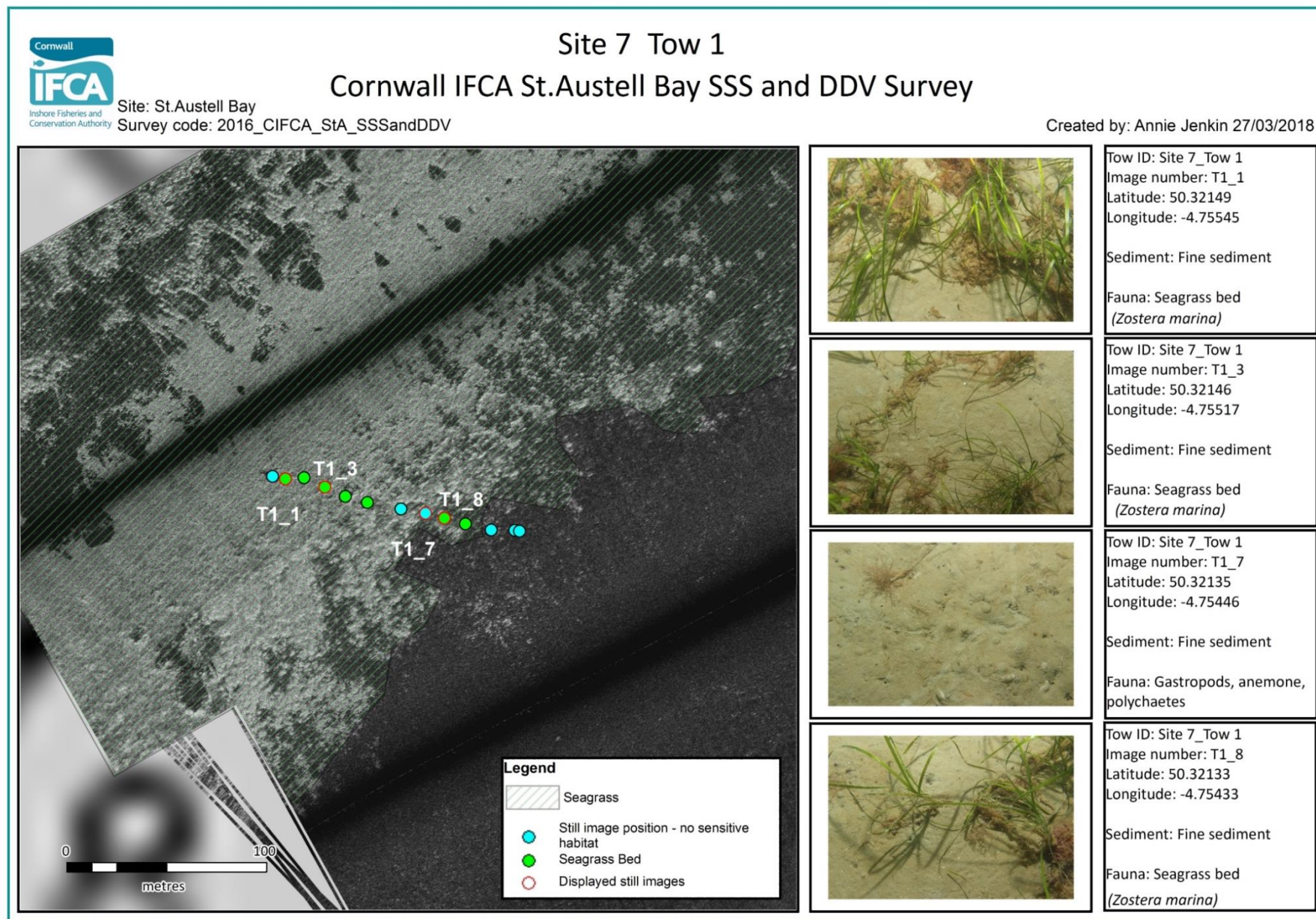


Figure 8: Station overview including habitat classification with still images from a side-scan survey and drop down video survey for Site 7 Tow 1 in St.Austell Bay

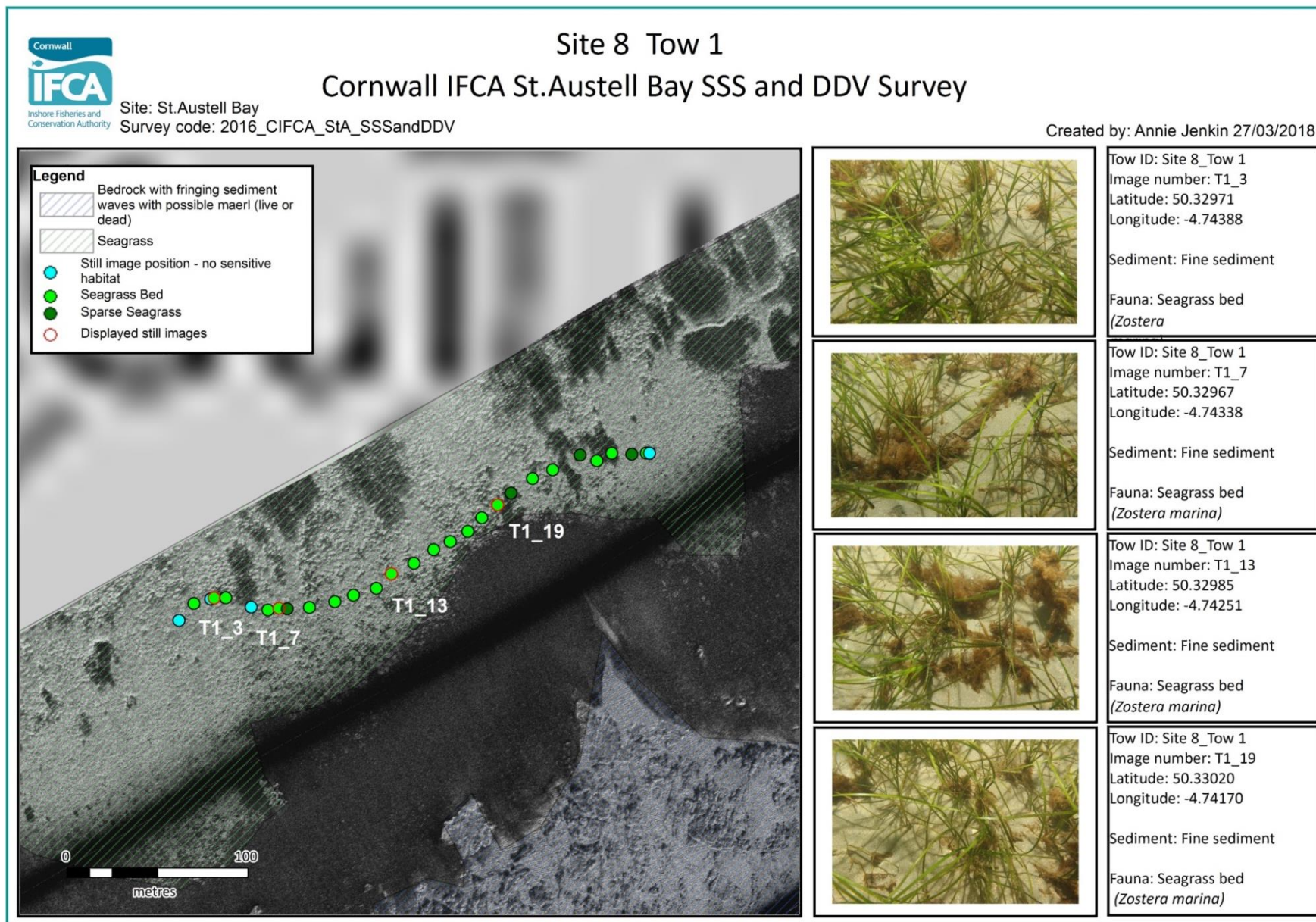


Figure 9: Station overview including habitat classification with still images from a side-scan survey and drop down video survey for Site 8 Tow 1 in St.Austell Bay

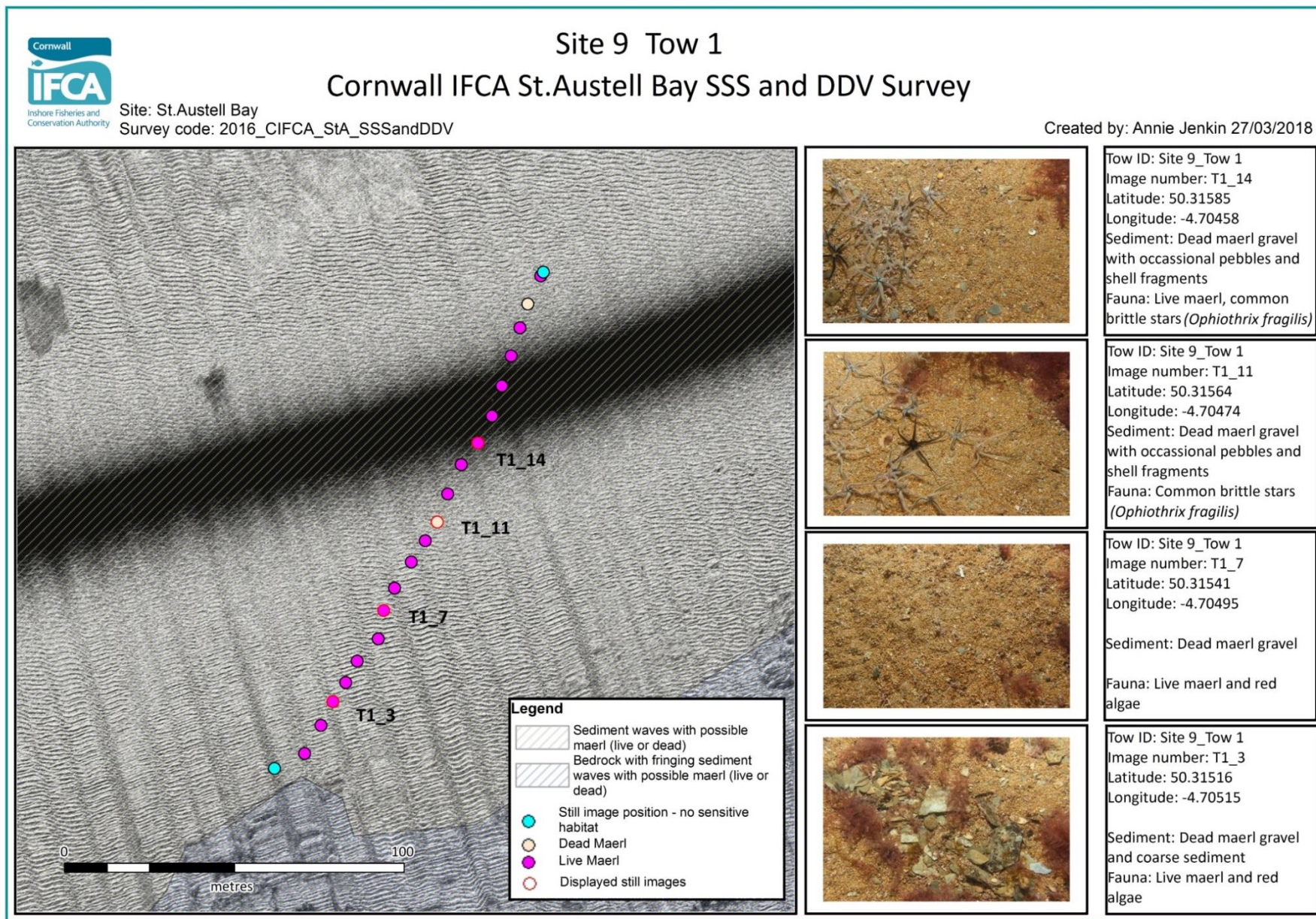


Figure 10: Station overview including habitat classification with still images from a side-scan survey and drop down video survey for Site 9 Tow 1 in St.Austell Bay

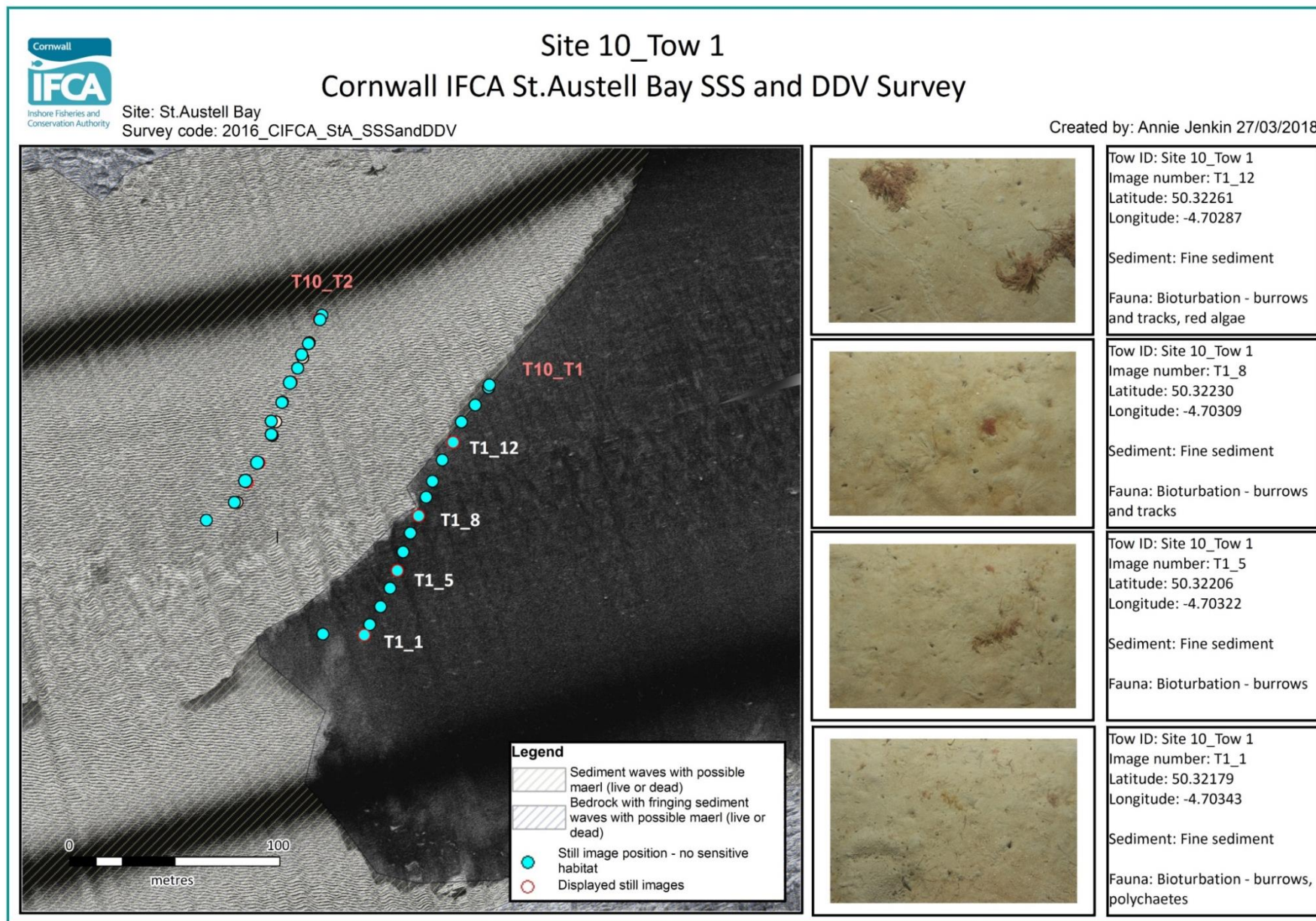


Figure 11: Station overview including habitat classification with still images from a side-scan survey and drop down video survey for Site 10 Tow 1 in St.Austell Bay

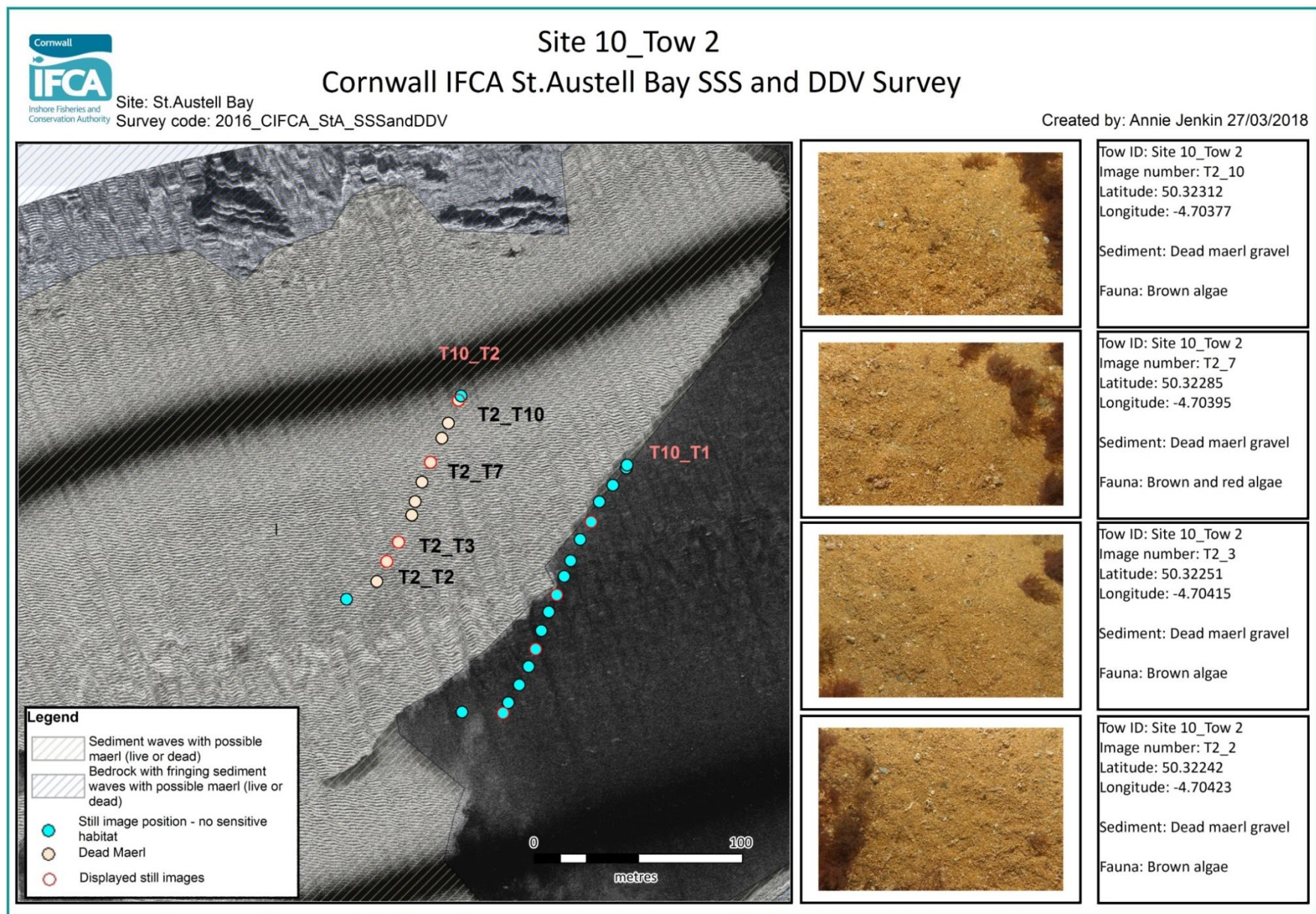


Figure 12: Station overview including habitat classification with still images from a side-scan survey and drop down video survey for Site 10 Tow 2 in St.Austell Bay

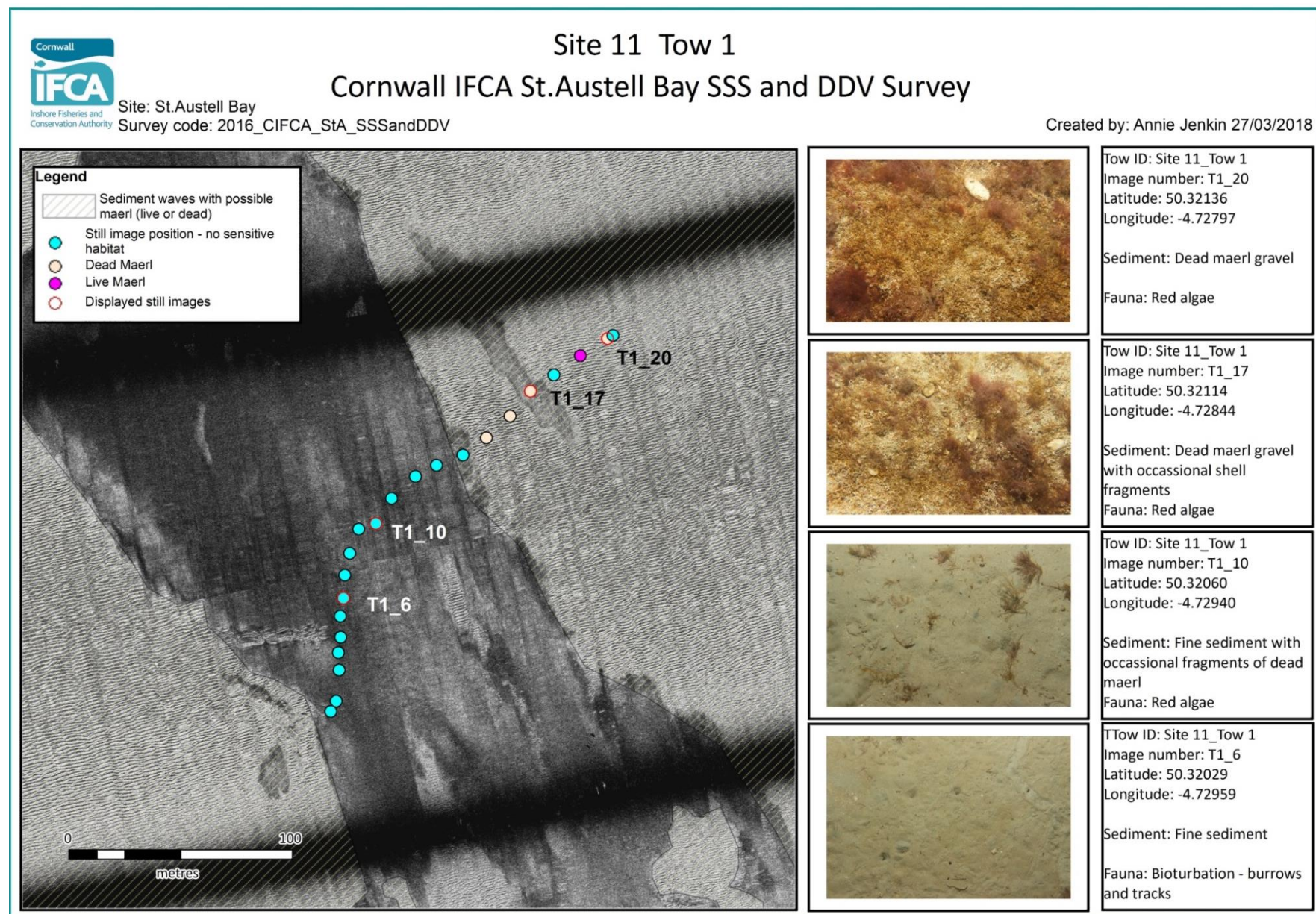


Figure 13: Station overview including habitat classification with still images from a side-scan survey and drop down video survey for Site 11 Tow 1 in St.Austell Bay