

CRAWFISH

PALINURUS ELEPHAS

CRAWFISH

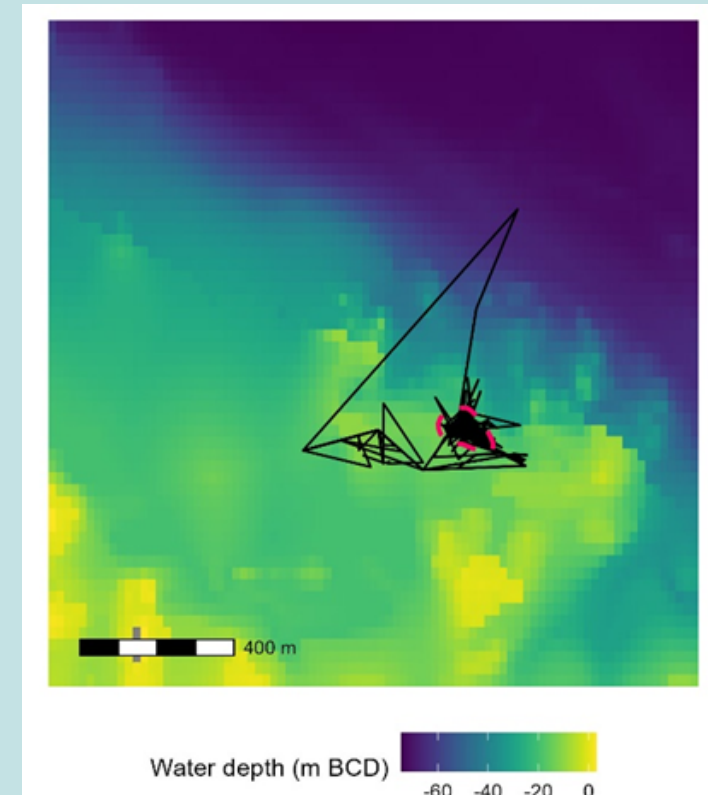


- *Palinurus elephas* are a species of crawfish or spiny lobster that live on deep, temperate reefs in the Atlantic and Mediterranean.
- They are classed as “vulnerable” due to historical fluctuations in populations and fishing pressure
- Females incubate eggs for ~10 months, hatched larvae are carried by ocean currents for around 12 months before settling into reefs and rocky habitats.
- Between 5 -10 years old when they first start breeding.

RESEARCH PARTNERSHIPS

UNIVERSITY OF PLYMOUTH

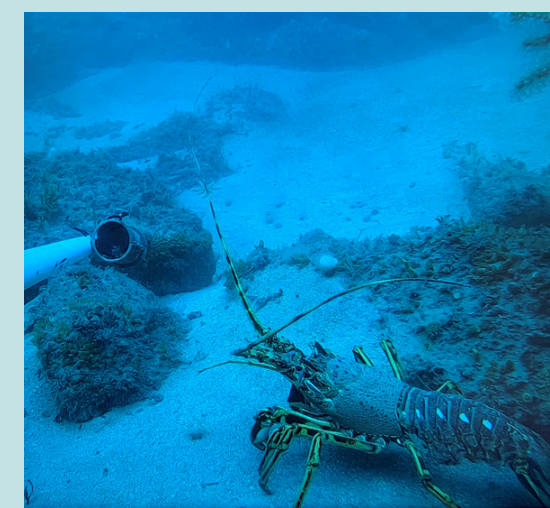
The use of telemetry helps us understand movement and migration.



Example figure of acoustically tagged Crawfish; Male; 108mm CL) movements 21/09/2022 – 30/05/2023. Black line represents animal path. Pink boundary represents animal core activity area

UNIVERSITY OF EXETER

A wide ranging study using baited remote underwater video systems (BRUVS) that will help determine abundance and areas of importance.

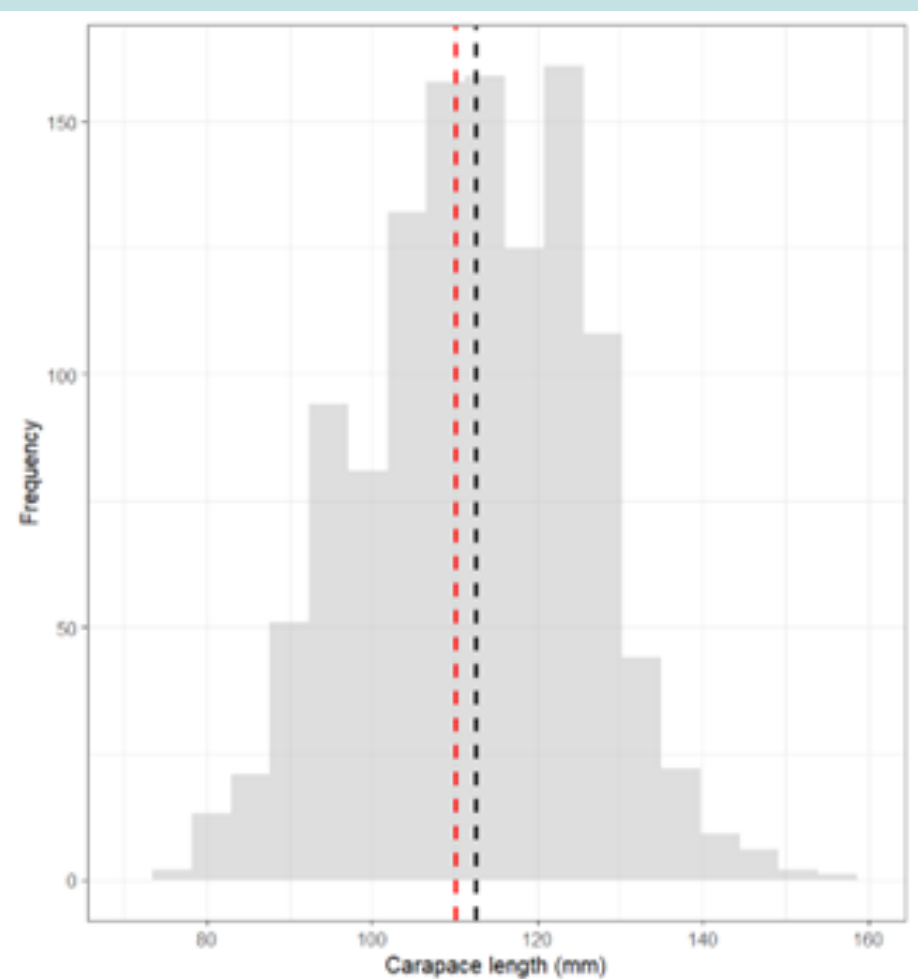


OUR FISHERS

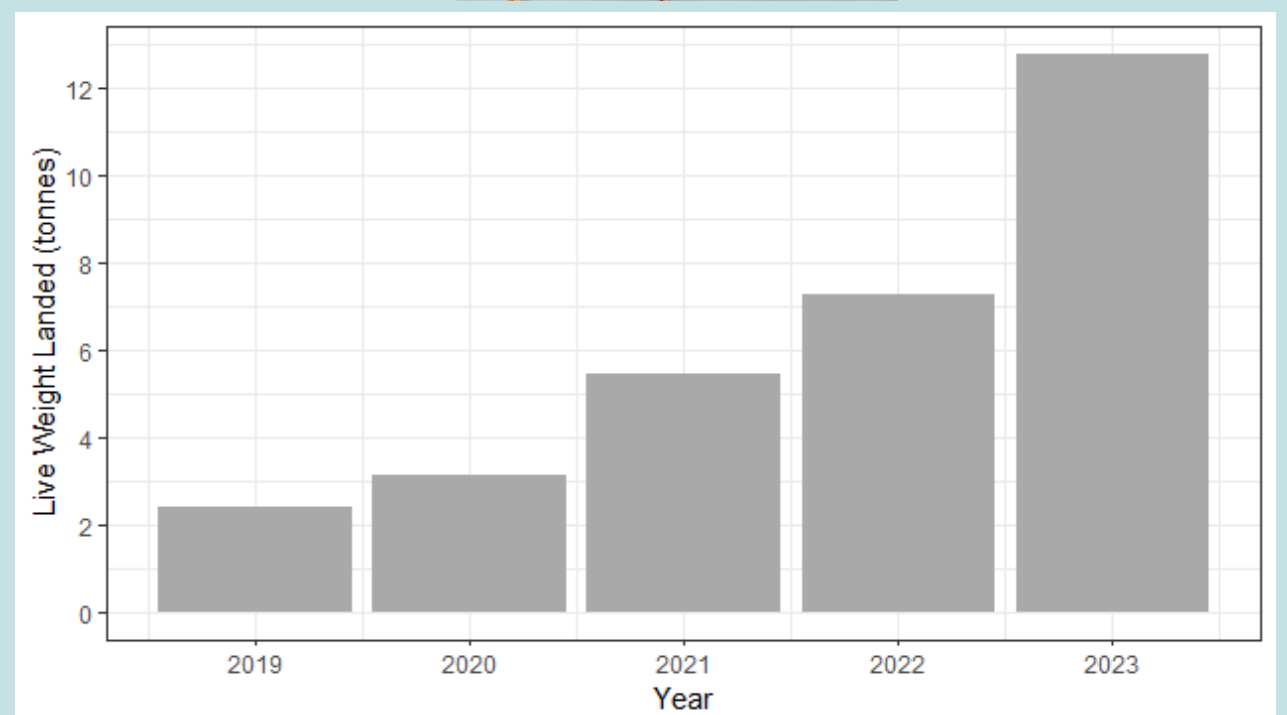
Working onboard boats with fishers helps us collect data on catch health. Streamer tags are used to collect data on growth and movement.

Report Results 2023

- Landings are increasing
- There’s a bias in catches towards males (79%)
- Average size of females is below minimum landing size
- Average size of males is above minimum landing size



Frequency of carapace length (CL) - red line is minimum landing size of 110 mm CL and black is mean CL



Landings on Isles of Scilly 2019 - Sept 2023