

Board 3. The Cricket Pavilion

The Cricket Pavilion is a key feature of the St Aubyns field and has a lot of potential to enhance the experience of individuals or community groups using the field.

RPC are seeking to ensure an active community use of, and access to, the Pavilion both by individuals and community groups whilthin he constraints imposed by the deed.



PAVILION WITH CLOCK & POSTS INTACT
PHOTOGRAPHS ABOVE FROM HERITAGE STATEMENT



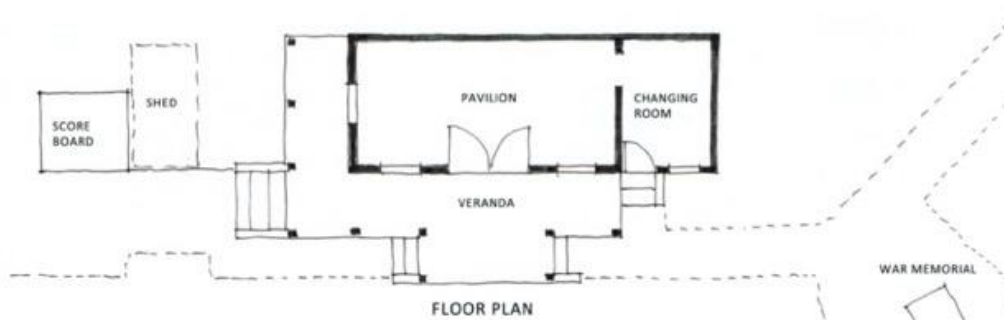
SCOREBOARD PAVILION WAR MEMORIAL WATER FOUNTAIN



WAR MEMORIAL



WATER FOUNTAIN



SITE PHOTOGRAPHS 17/12/21



SCOREBOARD



PAVILION WITH REPLACEMENT POSTS & CLOCK MISSING



INTERIOR OF PAVILION & CHANGING ROOM



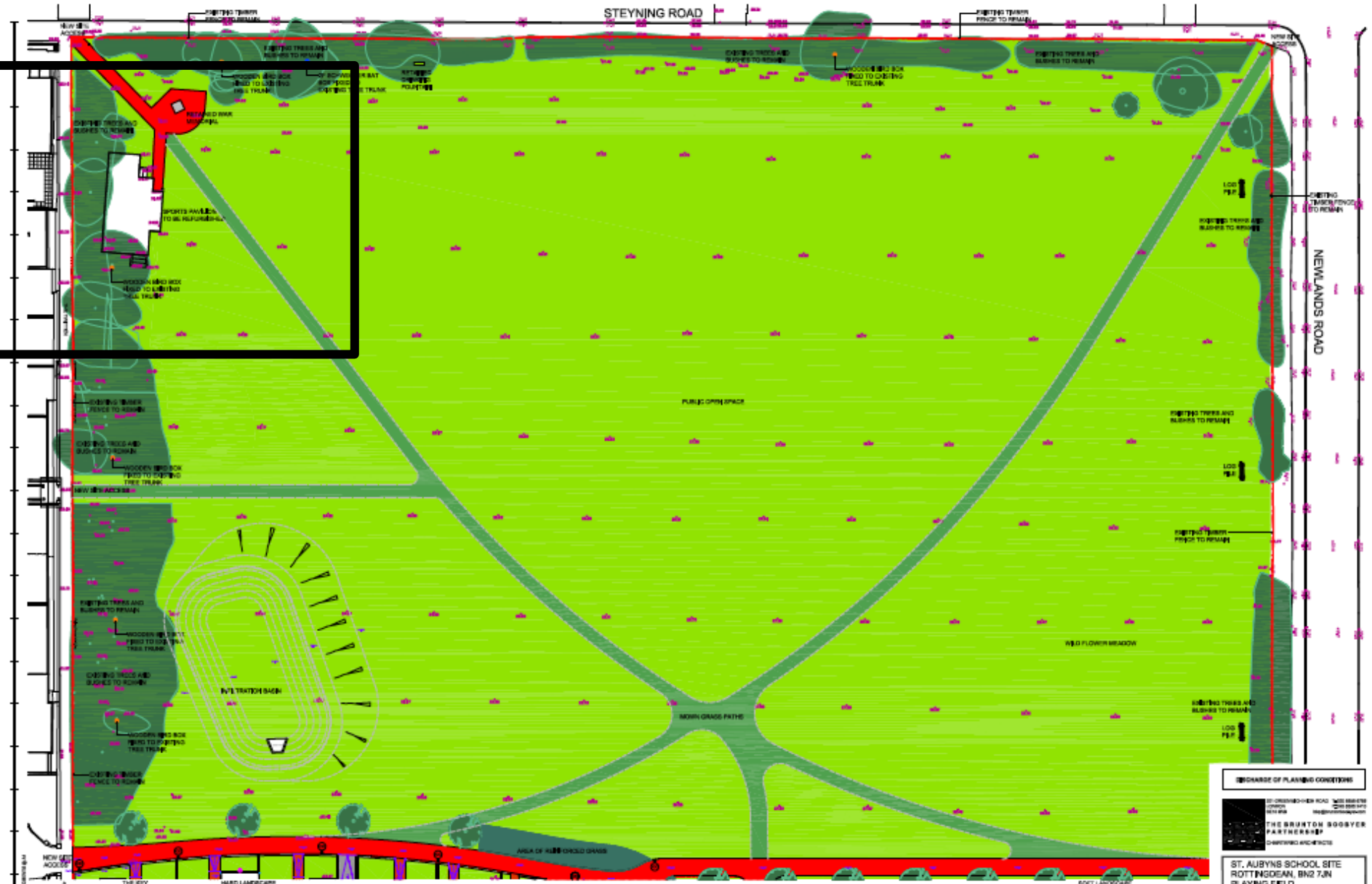
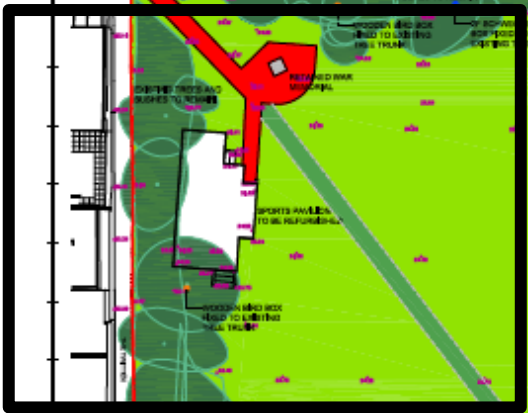
DRG NO: 2201/SK/04
SCALE: 1/100 @ A3
DATE: JANUARY 2022

ST. AUBYNs, ROTTINGDEAN PAVILION SKETCH PLANS & PHOTOGRAPHS AS EXISTING

John Whiting • Architect
14 Bates Road, Brighton, BN1 6PG
M: 07818 443753 E: jw@johnwhiting.co.uk
www.johnwhiting.co.uk

STEYNING ROAD

NEWLANDS ROAD



- LEGEND**
- SITE BOUNDARY
 - PROPOSED LEVELS
 - EXISTING TREES
 - NEW TREES
 - HARD LANDSCAPE
 - PAVED TYPE 1 - Asphalt
 - PAVED TYPE 2 - Concrete
 - PAVED TYPE 3 - Grass Paving
 - PAVED TYPE 4 - Grass Paving

- PAVED TYPE 1 - Asphalt
- PAVED TYPE 2 - Concrete
- PAVED TYPE 3 - Grass Paving
- PAVED TYPE 4 - Grass Paving

- PAVED TYPE 5 - Garden Paving
- EDGE TYPE 1 - Road Edge
- EDGE TYPE 2 - Field Edge

- GRASS
- SOFT LANDSCAPE
- FORCED GRADE FOR POTENTIAL FLOOD ACCESS

DISCHARGE OF PLANNING CONDITIONS

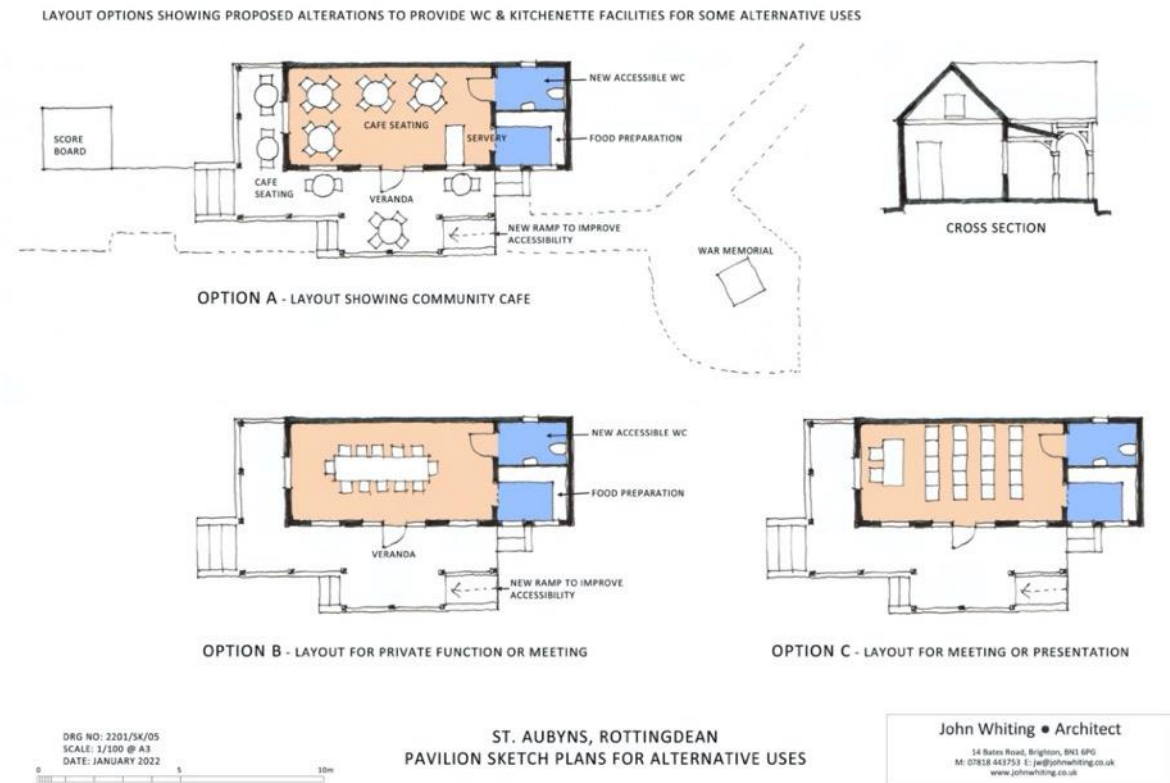
THE BRUNTON BOOBYER PARTNERSHIP

**ST. AUBYN'S SCHOOL SITE
ROTTINGDEAN, BN2 7JN
PLAYING FIELD
SITE PLAN (NORTH)**

1071A/102

The former St Aubyns Cricket Pavilion and Scoreboard- The Opportunities.

- Built in early 20th century, the Pavilion is Grade II listed and is situated in the northwest corner of the field. It is of wooden construction with internal wood panelled walls and has a surrounding tiled veranda. A paved area will provide access to the Pavilion and the memorial from the Steyning Rd entrance.
- Close by there is a memorial to those St Aubyns ex-pupils who died in the First and Second World Wars and a water fountain commemorating the accession of George V to the throne in 1911.
- The Pavilion will be refurbished during 2022 and handed over to RPC in a good state of repair in 2023 but with no heating.
- The Pavilion could be used as an open shelter and meeting place or as a storage area for recreation equipment at an average annual running cost including periodic maintenance estimated at £4,300-£4,700.
- Alternatively, it may be possible to use it as a community/charity café (not-for-profit) or for community groups to use e.g. as a social club. **The Pavilion could accommodate up to 15 people comfortably in meeting or audience style and if needed it has a separate section suitable for a toilet and kitchenette**



There are, however, restrictions:

- Under the terms of the deed the Field **can only be used for recreation or a limited number of licensed community events. Business or trade activities are not permitted.**
- These restrictions also apply to the Pavilion, although use as a meeting place or a not-for-profit charity/community café would be permitted.
- The ability to generate revenue for charitable purposes needs to be confirmed.
- Any modifications, for example the installation of a toilet or kitchen, would be require listed planning consent.
- **The capital and maintenance cost of any proposals for additional facilities in the Pavilion needs to be carefully considered and funding sources identified**