

May 2017



Isle of Wight Safeguarding Children Board

Business Plan 2017 -2018

Our vision and purpose

“Working together to ensure high quality outcomes for all children and their families and to enable them to access sustainable support and services”

We share this vision with the Children’s Trust Board, the Health and Wellbeing Board (HWB) and the Isle of Wight Council. We are all committed to working together to ensure that children and young people are safe.

Our purpose

Section 14 of the Children Act 2004 sets out the statutory objectives of Local Safeguarding Children Boards, which are:

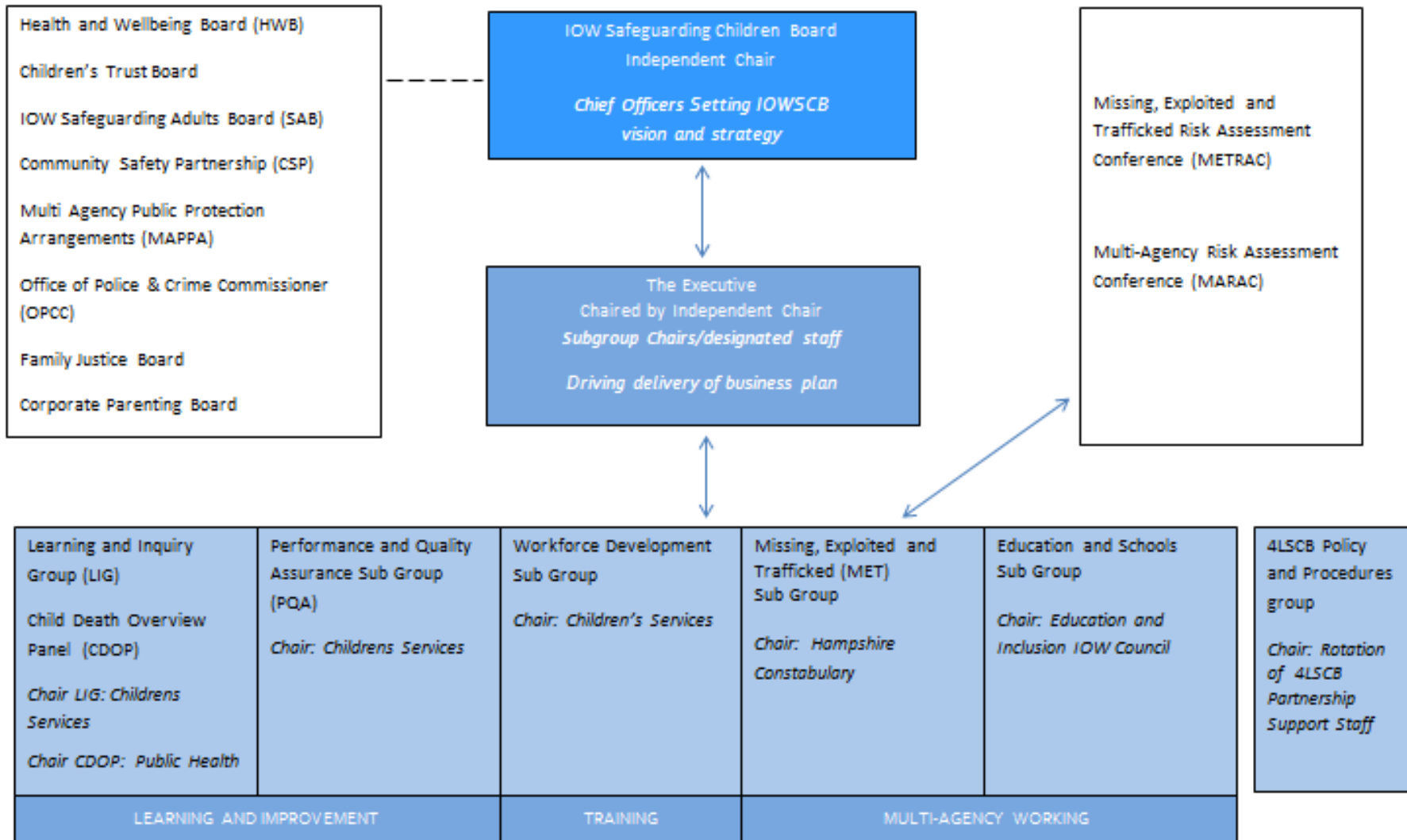
- To co-ordinate what is done by each person or body represented on the Board for the purposes of safeguarding and promoting the welfare of children in their area; and
- To ensure the effectiveness of what is done by each such person or body for those purposes.¹

Everything we do is underpinned by two key principles:

1. Safeguarding is everybody’s responsibility - for services to be effective each professional and organisation should play their full part
2. A child centred approach - for services to be effective they should be based on a clear understanding of the needs and views of the individual children whilst recognising the support parents and carers may require.

¹ Working Together to Safeguarding Children 2015

The Structure of the Board 2017/18



Our key priorities for 2017/18

At the Board meeting in March 2017, IOWSCB members agreed to a revised structure of the Business plan for 2017/18 with three key thematic priorities. A range of work has been achieved over the previous financial year, with the development of key leadership priorities and strategies as well as more thematic approaches to quality assurance and auditing.

The IOWSCB will take a leadership role in the delivery, monitoring and quality assurance of partnership work on the priority areas in the plan. Progress against the Business Plan priorities will be reviewed and monitored by the Executive Group, with chairs of the relevant subgroups reporting to this group on progress against their work plans. Where appropriate, the Executive Group will highlight areas of concern about progress made on identified priorities to the full IOWSCB Board meetings for further action. IOWSCB will also identify and promote good practice across partner agencies.

Our key priorities for 2017/18 are:

Priority One: Child Neglect – To embed the Neglect Strategy, increasing workforce knowledge of the types of neglect and their skills at identifying symptoms of neglect and their ability to intervene to support and protect children at risk of or affected by neglect.

Priority Two: A Family Approach – To ensure that professionals understand and adopt a ‘Family Approach’ to service provision to ensure that safeguarding risks to children are assessed and managed effectively in their own right and, as part of planned work with adults.

Priority Three: Safeguarding Children from Sexual Abuse – To further develop and implement co-ordinated approaches to: Sexual Health and Well-Being, Sexual Abuse and Exploitation and the recommendations from the IOWSCB Deep Dive Analysis into Teenage Sexual Behaviour and Consent in order to support and protect children.

Key threads that will run through all of the priority areas in 2017/18:

The voice of the child – making sure that our work takes account of the lived experience of the child and that children are actively engaged in Safeguarding and Child Protection processes.

Partnership working – making sure that we engage with the local community including faith groups and the voluntary sector.

Learning inquiries – making sure that we identify learning from SCRs and learning inquiries including best practice examples and disseminate it through workshops and monitoring Multi-agency responses to recommendations.

Priority 1: Child Neglect					
Aim: To embed the Neglect Strategy, further developing workforce knowledge and skills at identifying types and symptoms of neglect and the ability to intervene or access interventions to support and protect children at risk of or effected by neglect.					
Expected outcome	Actions needed (inputs)	Action owner	Target date	Success Measure and Expected Impact	Monitoring arrangements
The IOWSCB is assured of a multi-agency understanding of and response to the complex issues of Neglect in line with the agreed Neglect strategy	1.1 Finalise and publish the Neglect online toolkit (including interventions) for children’s workforce across IOW.	Neglect multi-agency task and finish group	Toolkit finalised by end of Q3	<p>Toolkits will be published and disseminated across agencies.</p> <p>Professionals surveyed report having greater understanding and recognition of the early signs of neglect through using the toolkit.</p> <p>Multi-agency use of assessment tool and interventions toolkit ensures consistent practice across agencies.</p> <p>Children experiencing neglect identified at the earliest opportunity through increased professional awareness.</p>	<p>Reports to Exec and Board.</p> <p>Case file audits.</p>
	1.2 Develop and roll out multi-agency neglect training that supports the implementation of the Strategy, and has been informed by findings from relevant audits, staff survey’s and local and national research.	Workforce Development	End of Q 3	<p>The training and development programme delivered will directly meet the training needs of the workforce.</p> <p>Evaluations show that over 90% of attendees state that the training will positively impact on their practice.</p>	<p>Through workforce development group quarterly review of training outputs and outcomes.</p>
	<p>1.3 Analyse the findings of the new missing children return interview pilot to establish whether more is known about those children where neglect is a factor in their missing behaviour.</p> <p>METRAC group to analyse cases where children are at risk of, or experiencing Sexual Exploitation to better understand the underlying causes for their risks and vulnerabilities and whether child neglect is a factor.</p>	<p>Missing Exploited and Trafficked Group</p> <p>METRAC</p>	<p>End of Q4</p> <p>Reviewed every quarter throughout 17/18</p>	<p>A report to the IOWSCB will provide assurance that any links between CSE and neglect are explored and appropriate action is taken where neglect is suspected, and, that return interview data will show that any neglect is both identified in a timely way and acted upon.</p>	<p>Through PQA/MET data and CSC return interview data and analysis.</p> <p>PQA data, SERAF data, METRAC data at quarterly PQA meeting.</p>

Priority 1: Child Neglect					
Aim: To embed the Neglect Strategy, further developing workforce knowledge and skills at identifying types and symptoms of neglect and the ability to intervene or access interventions to support and protect children at risk of or effected by neglect.					
Expected outcome	Actions needed (inputs)	Action owner	Target date	Success Measure and Expected Impact	Monitoring arrangements
	<p>1.4 Monitor and review those children with School attendance below 50% initially through a multi-agency audit with a focus on whether neglect is a feature of the child’s lived experience.</p> <p>Use recommendations from audit to add to the multi-agency action plan to improve practice in recognising and reporting neglect so that support can be provided.</p>	<p>Education group (Primary) PQA (secondary)</p>	<p>Q3 for Audit. Following up by Q4</p>	<p>Report to Board will provide assurance that there is a robust action plan in place to highlight children with low school attendance, and that professionals working with them can readily identifying those children where neglect is a feature including younger children who are “not brought” to school by their parents.</p> <p>Attendance data will reflect fewer children with low attendance and those where neglect is identified as an issue will be assessed and safeguarded to ensure the child’s right to an education is met.</p>	<p>Through PQA review of combined Audit action plan quarterly. Through education group discussion and audits. Attendance data.</p>
	<p>1.5 To develop in line with the Neglect Strategy (P8) an evaluation framework for measuring success and impact of the strategy priorities.</p>	<p>Neglect multi-agency task and finish group</p>	<p>Q4</p>	<p>There will be an effective framework in place to measure success in terms of the 4 priority areas: Governance, Prevention, Interventions, Evaluation.</p> <p>Evaluation data and case studies can demonstrate that:</p> <p>a) Practitioners can access information /tools and training.</p> <p>b) Practitioners can evidence how they have used the tools in their front line work to provide positive impact on children.</p> <p>c) Practitioners can evidence how training has positively impacted on their work with children.</p>	<p>Neglect multi-agency task and finish group to monitor through the evaluation framework progress on the priority areas.</p>

Priority 2: A Family Approach					
Aim: To ensure that professionals understand and adopt a 'Family Approach' to service provision to ensure that safeguarding risks to children are assessed and managed effectively in their own right, and, as part of planned work with adults.					
Expected outcome	Actions needed (inputs)	Action owner	Target date	Success Measure and Expected Impact	Monitoring arrangements
The IOWSCB is assured of a multi-agency understanding of and responses to the complex issues of Domestic Abuse, Substance Misuse and Adult Mental ill Health on their own and in combination and the impact on children's safety and well-being	2.1 In partnership with the Safeguarding Adults Board develop and implement a multi-agency protocol on the 'Family Approach to Safeguarding'.	Partnership Support Team and Adult Board Manager	October 2017	There will be a protocol in place and used that ensures that all professionals consider the risks to and needs of all children and vulnerable adults. (see 2.4 audit)	Board to receive assurance form all children and adult service statutory providers that they have read and cascaded the protocol to their staff for implementation.
	2.2 In partnership with the Safeguarding Adults Board, and using the newly developed protocol as a platform, plan and deliver joint training on: - domestic abuse (to include child on parent abuse and adolescent relationship abuse) - adult mental health - substance misuse	Workforce Development / Adult Board	Q4	Evaluation of training evidences that staff working with adults can consider risks to children, and that staff working with children can identify risk factors associated with adults. Evaluation feedback states that over 90% of attendees say that the training will positively impact on their practice.	Through Workforce Development group meetings and annual review of training impact.
	2.3 To deliver an event for professionals covering the legal perspective on Coercive Control, child on parent abuse, and adolescent relationship abuse.	Workforce Development / Adult Board (primary) Learning and Inquiry Group (secondary)	Q3	The children's and adults workforce will have a better understanding of the legislation on Coercive control and feedback shows that over 90% of respondents to post event evaluation can better recognise it and take appropriate action to protect children living in a household where this abuse is present.	Once the training has been run and the new understanding embedded a multi-agency audit of cases where coercion and control was present will be undertaken.
	2.4 A multi-agency case audit to be undertaken to assure effective multi-agency response of the effects of parental Mental Ill Health on the safety and well-being of the child.	PQA	Q4 for the Audit	The report to Board will provide assurance that there is good multi-agency understanding of the impact of parental mental ill health on children's safety and wellbeing and how to intervene to reduce risk.	PQA combined audit action plan reviews and learning events if appropriate.

Priority 2: A Family Approach					
Aim: To ensure that professionals understand and adopt a 'Family Approach' to service provision to ensure that safeguarding risks to children are assessed and managed effectively in their own right, and, as part of planned work with adults.					
Expected outcome	Actions needed (inputs)	Action owner	Target date	Success Measure and Expected Impact	Monitoring arrangements
	2.5 Ensure training is available on substance misuse and risks to children as well as changes to laws with regards to substance misuse through delivery of an annual update event in collaboration with Public Health and the Adult Safeguarding Board.	Workforce Development/ Public Health / Adult Board	Q4	Post course evaluation shows that over 90% of attendees have increased understanding and greater confidence at dealing with cases where substance misuse is an issue.	Workforce Development group will examine course evaluations.
	2.6 To better understand the role that partners/carers not living in the family home, and step fathers, can play in both identifying neglect and supporting families where neglect is a feature, and, also contributing to the neglect of vulnerable children.	PQA	Q4	Practitioners will be more aware of the role that adults who do not reside in the family home can play in supporting families and / or contributing to the neglect of children. Practitioners will routinely listen to the voice of the partners/carers in their assessments and planning to ensure that their views are taken account of and that they are an active part of any neglect assessments or interventions.	Standard question on all audit tools for multiagency Case file audits and surveys of parents/carers.
	2.7 Review the 4LSCB Joint Working Protocol and adopt it as a policy and create a shorter protocol with a flow chart for ease of use by multi-agency practitioners and provide training in their use.	4LSCB / Partnership Support Team / Workforce Development	Q1 for full policy Q2 for summary document.	Full protocol will be in place on web site in June 2017 and promoted to all practitioners. Summary protocol will be in place and used by all practitioners by the end of Q2.	Part of Child G recommendations monitored through combined SCR action plan by Learning & Inquiry Group.

Priority 2: A Family Approach					
Aim: To ensure that professionals understand and adopt a 'Family Approach' to service provision to ensure that safeguarding risks to children are assessed and managed effectively in their own right, and, as part of planned work with adults.					
Expected outcome	Actions needed (inputs)	Action owner	Target date	Success Measure and Expected Impact	Monitoring arrangements
	<p>2.8 Awareness raising for families in response to keeping children safe on line and preventing MET.</p> <p>Maintain an up to date online resource library on MET related issues.</p>	<p>Partnership Support team / Workforce Development</p>	<p>Q3 and Q4</p> <p>Throughout 2017/18</p>	<p>Four training sessions will be delivered by the end of the reporting year.</p> <p>Feedback from training sessions will inform the online resource library.</p> <p>Feedback from training sessions shows that over 90% of parents attending feel better equipped to help their children stay safe online and a better understanding of the safe use of new technology.</p>	<p>Workforce Development group to examine feedback from the training and ensure that it is observed by a group member to assure quality.</p>
	<p>2.9 Work with Electively Home Educating (EHE) families to:</p> <ul style="list-style-type: none"> • Conduct a survey across EHE families to better understand the perceptions of EHE families and use this information to support professionals when working with EHE families • Ensure EHE children have access to the opportunities offered by the IOWSCB to all IOW School educated children • Encourage greater uptake of the IOW training offer to EHE families and ensure they are given information on key safeguarding issues in line with families who access schools • Ensure appropriate plans are in place for vulnerable children who are EHE. 	<p>Education Sub group</p>	<p>Survey Q1</p> <p>Action Plan following Survey Q2</p> <p>Other activities ongoing throughout 2017/18</p>	<p>IOWSCB will have developed better understanding of the reasons why some families on IOW home educate. Findings from the survey will inform multi-agency training and assist professionals to engage positively with EHE families.</p>	<p>Education group to monitor home education figures and also reasons for children leaving to be home educated both from a family and school perspective. Uptake of training by EHE families will be monitored through Workforce Development group data. EHE to be a standing item agenda.</p>

Priority 2: A Family Approach

Aim: To ensure that professionals understand and adopt a ‘Family Approach’ to service provision to ensure that safeguarding risks to children are assessed and managed effectively in their own right, and, as part of planned work with adults.

Expected outcome	Actions needed (inputs)	Action owner	Target date	Success Measure and Expected Impact	Monitoring arrangements
	2.10 Health Partners to provide assurance that all groups of children on IOW, including Looked After Children (LAC), receive a service that meets their needs.	Trust, CCG and NHS England via Executive Group (Primary) PQA (Secondary)	March 2018	LAC medical / dental checks will be completed on time	Children and their carers will have access to appropriate medical care and be well informed about the need for regular medical and dental checks. Providers will take into account of the views of the child on how services can best be offered.

Priority 3: Safeguarding Children From Sexual Abuse					
Aim: To further develop and implement co-ordinated approaches to: Sexual Health and Well-Being, Sexual Abuse and Exploitation and the recommendations from the IOWSCB Deep Dive Analysis into Teenage Sexual Behaviour and Consent in order to support and protect children.					
Expected outcome	Actions needed (inputs)	Action owner	Target date	Success Measure and Expected Impact	Monitoring arrangements
The board will be assured that there are appropriate responses in place across the IOW to sexual abuse and teenage sexual behaviours and sexual health needs so that children are protected	3.1 A multi-agency working group to be established to implement the recommendations of the deep dive audit on Teenage Sexual Behaviours and Consent.	Public Health led Task and Finish Group	Q4 for completion	Action plan to be agreed by end of Q1. Recommendations to be implemented by end of Q4. Implementations of actions will ensure children are better protected by a consistent multi - agency response to under age sex, consent and actions to be taken to make sure children are safe.	The deep dive analysis was in response to an SCR and Partnership Review and so actions are monitored through the Learning and Inquiry combined SCR action plan but also through PQA and the Deep Dive audit action plan.
	3.2 To plan and implement training on: <ul style="list-style-type: none"> Sexual Health and CSE risks Sexually harmful behaviours (July, Oct, Feb) Consent and the law To receive and scrutinise the results of the Public Health (SHEA) survey and seek assurances about actions to be taken as a result of the survey.	Workforce Development / Education and Public Health Education group	Q4 Q4	Training evaluations show that over 90% of attendees: - Better understand the law and how to apply it - Report increased confidence when dealing with sex related issues and providing children with appropriate information and advice to make informed choices and stay safe - Understand how to intervene and refer when necessary to protect vulnerable children IOWSCB receives assurance that actions from survey are implemented by end of Q4.	Workforce Development group to monitor through course evaluations Public Health to monitor through the SHEA Survey and report to the Education group.
	3.3 Following the introduction of new legislation on the provision of Sex and Relationship Education (SRE), conduct a re-audit of professionals to establish whether staff are confident that they know and can apply the law in relation to healthy relationships and responses to underage sex.	Education sub group / Public Health	Q4	IOWSCB receives assurance that all IOW Schools are offering children appropriate SRE in line with current legislation.	Education group to monitor the PSHE offer via the audit and school audit visits. Public Health to monitor uptake of the PHSE forum and analyse results of schools survey.

Priority 3: Safeguarding Children From Sexual Abuse

Aim: To further develop and implement co-ordinated approaches to: Sexual Health and Well-Being, Sexual Abuse and Exploitation and the recommendations from the IOWSCB Deep Dive Analysis into Teenage Sexual Behaviour and Consent in order to support and protect children.

Expected outcome	Actions needed (inputs)	Action owner	Target date	Success Measure and Expected Impact	Monitoring arrangements
	3.4 SERAF and new referrals flow chart will: a) Be finalised and agreed at MET b) Disseminated to practitioners via emails and training sessions c) Added to the LSCB web site	Missing Exploited and Trafficked / Workforce Development and Education groups	Q2	The new guidance flowchart will be in place and the agreed SERAF will be on the website. Practitioners from across agencies will confidently complete SERAFs for any children they believe might be at risk of or experiencing CSE. Increase in the number of SERAF forms submitted to Children’s Services by partner agencies over Q3 and Q4, leading to earlier identification of children at risk of MET.	METRAC data, MASH data, MET discussion. Education audit.
	3.5 To be assured that there is an effective professional response to Intra-familial sexual abuse via a multi-agency case audit. Use subsequent recommendations to inform multi-agency policy, practice and training.	PQA	Audit Q1 Findings and action plan Q2. Actions to be implemented through 17/18	The Board is assured, via the results of the audit, that board partners work well together to identify and protect children at risk of intra-familial sexual abuse. Any actions arising from the audit are implemented by the end of Q4.	Recommendations will be added to PQA Combined Audit Action Plan and will be reviewed regularly. Any training needs identified from the audit will be added to WFD priorities.
	3.6 To continue to raise awareness of CSE with a particular focus on boys and CSE and safe internet use through use of the OPCC grant funding. Additional allocated funds from the LSCB to support Primary and Secondary School performances of In The Net and Crashing as well as activity to support national CSE awareness day.	MET/ Workforce Development Group	Q3 Q4 for CSE Day	All Secondary Schools and Primary School on a rotational basis will have access to the Plays and Workshops for children in Years 8-11 and in Primary Schools years 5-6 and will report increased awareness and understanding of CSE and on line safety and how to act if they have concerns.	Evaluations of the workshops show increased awareness of CSE issues and understanding of what to do if the children are concerned. The CSE day will result in greater public awareness of CS and how to protect our children and encourage safe practice.