



Isle of Wight
**Safeguarding
Children
Partnership**

Strategic Priorities 2026 – 2029
Business Plan 2026-2027

Cross cutting themes in strategic priorities

Voice of the child
and family

“Cost of living crisis”
and the impact of this

Equality, diversity
and inclusion
considerations

Parent-oriented issues
i.e. domestic abuse
and problematic
substance use

Emotional wellbeing
and mental health

Capability and capacity
of the workforce

Online harm and
extra familial harm

Engagement with
services, getting it
right first time

Children with additional
needs/disabilities

Safeguarding within the
educational experience
of vulnerable children

Cumulative impact
of harm

Analysing data to
identify families
needing support

Strategic Priorities 2026-29

- ▶ **Educational Engagement of Vulnerable Children** (inc. children not attending school)
- ▶ **Online Harm**
- ▶ **Families First Partnership Programme**
- ▶ **Safeguarding Themes**
 - **Year 1:** Child Sexual Abuse and Domestic Abuse;
 - **Year 2/3:** Familial factors such as substance misuse, intergenerational impact, blended families

OUTCOME STATEMENT

Safeguarding partners and relevant agencies will have a strengthened understanding of the educational experience of children with additional vulnerabilities. Partners will support and promote an effective multi agency response to children with reduced educational engagement.

Initial actions to incorporate into the business plan to achieve this:

- ▶ Update the Educational Neglect Advice to include expectations of professional and agencies [Q1]
- ▶ Development of a local resource Understanding the Links Between Trauma and Neurodiversity in Children - Wigan Safeguarding Children's Partnership [Q1]
- ▶ Present the relevant learning for 'Daniel' at Designated Safeguarding Lead and Headteacher forums [Q1]
- ▶ Assurance of effective operation of the Section 19 panel [Q1] . Section 19 of the UK's Education Act 1996, which mandates that Local Authorities (LAs) provide suitable education for children (of compulsory school age) who can't attend school due to illness (physical or mental), exclusion, or other reasons, ensuring they get education elsewhere Thematic Audit: The multi-agency response to vulnerable children who have significantly reduced educational engagement [Q2]
- ▶ Progress relevant recommendations arising from the 'Seeing Daniel' Local Learning Event and thematic audit
- ▶ Assess confidence in the current Elective Home Education process – from a range of perspectives, including data. (parent/carer survey/poll, children via Beewell, professional survey and focus groups)
- ▶ Monitor/ assurance of children in receipt of multi agency early help where educational engagement is of concern, through 157/175 self assessment – schools. Dip sample of early help cohort to ensure educational engagement is considered and supported as needed.
- ▶ Assurance through the Early Years safeguarding self assessment and new responsibilities in promoting good attendance
- ▶ Assurance of GPs/educations settings practice in relation to children who are perceived as not well enough to attend school (Compliance with existing protocol/memorandum of understanding)

OUTCOME STATEMENT

Online harm is increasing and evident in children requiring help and protection. We will seek to strengthen understanding and response to online harm, with recognition this covers a broad spectrum with links to child exploitation, children's emotional wellbeing and mental ill health issues, social isolation, radicalisation, child on child abuse, and adult on child abuse, children as victims and as those causing harm. In addition, we will seek to promote awareness of new and emerging threats (Coms Groups for e.g.)

Initial actions to incorporate into the business plan to achieve this:

- ▶ Understand what resources are in place and used locally to support professionals, parents/carers and children and young people (Gap analysis). Board member and DSL survey [Q1]
- ▶ Create online harm toolkit [Q1]
- ▶ Review multi agency training available (gap analysis) [Q2]
- ▶ Conference about online harm for professionals' year 1 [Q4]
 - child consultation (children's voice event and consultation with schools), Education subgroup, DSL network and practitioner survey to indicate content?
 - consideration of parents' event in year 2?
- ▶ Assurance of online safety/harm being sufficiently addressed within school curriculum - through verification visits (s157/175 self assessment) [Q3]
- ▶ Communication plan - Develop guidance notes i.e. [ddscp-briefing-note-communicating-and-engaging-with-parents-about-online-safety-final-june-2025.pdf](#) [Q4]
- ▶ Increase reference to online harm within revisions to the threshold chart [Q3]

OUTCOME STATEMENT

The Families First Partnership Programme is ambitious in its intention, seeking to rebalance the multi-agency safeguarding system to increase emphasis on early help and prevention. A child centred approach within a whole family focus.

The delivery of the aspirations of the programme is the responsibility of the safeguarding partners and requires deep collaboration and co-operation across the multi-agency safeguarding system.

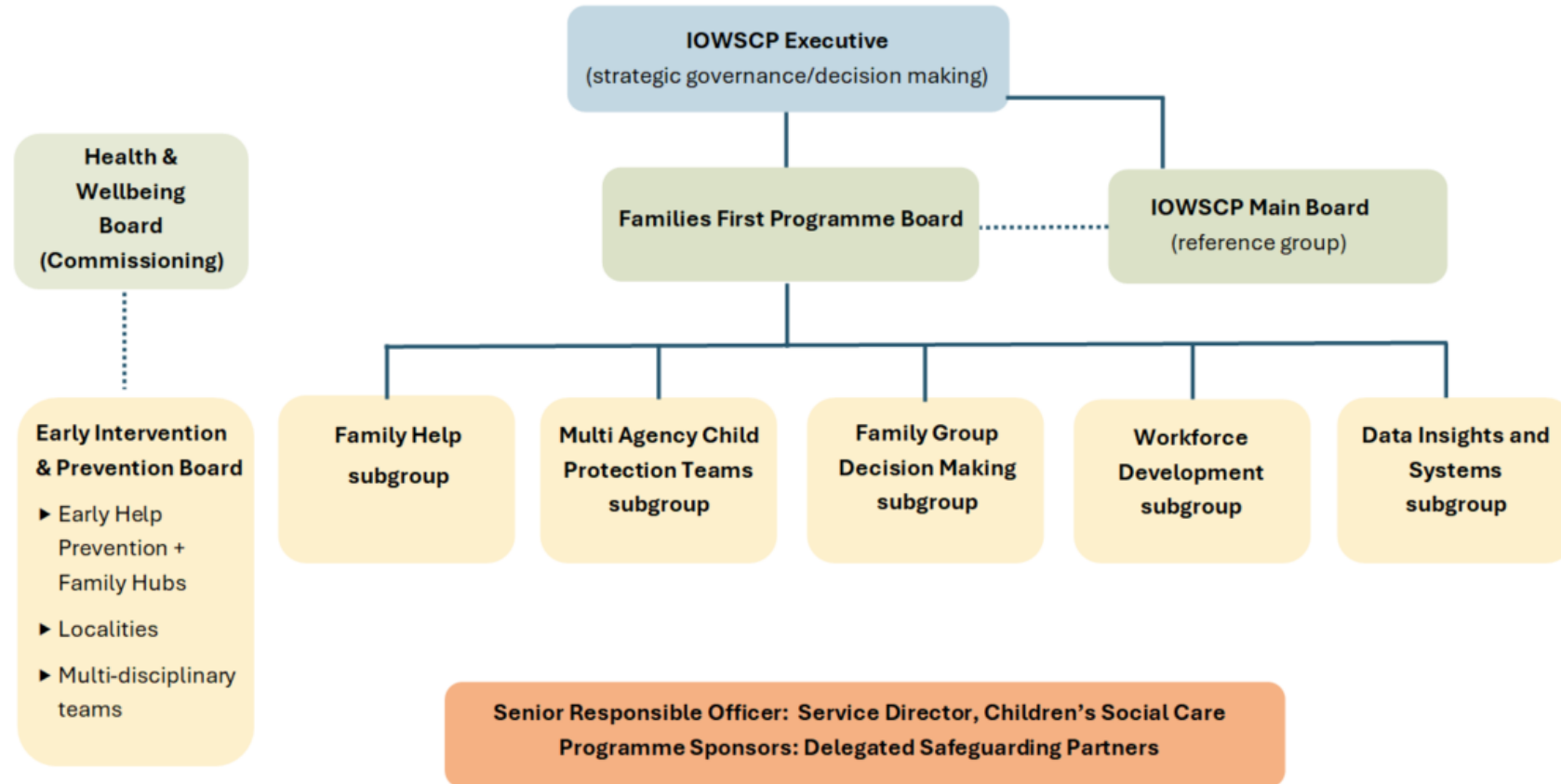
This includes:

- Effective early help and prevention and sustained multi agency engagement
- The development of a family help assessment for use when children may need targeted early help or be a child in need (s17)
- Family Network/ Family Group Decision Making, involving family networks and professionals in the plan for a child (public law outline)
- Multi Agency Child Protection Teams
- Revised threshold chart reflecting the above

Families First partnership Programme

FAMILIES FIRST PARTNERSHIP PROGRAMME GOVERNANCE

DRAFT



Initial actions to incorporate into the business plan to achieve this:

- ▶ Development and publication updated Threshold Chart and Guidance, including implementation and within workforce development
- ▶ Multi agency workforce development in relation to Families First programme practice model
- ▶ Co production of one assessment across Family Help (combining the child and family assessment and early help assessment for use by practitioners) and the role of the lead practitioner
- ▶ Co production of the approach to multi agency child protection teams
- ▶ Assurance of the development and implementation of the Families First Partnership Programme
- ▶ Supporting delivery of key communication to frontline practitioners, operational managers and strategic leaders

OUTCOME STATEMENT

Together we will seek to strengthen our multi-agency understanding and response to safeguarding themes and children in specific circumstances. We will continue to be responsive to safeguarding themes as they arise, supporting the multi agency workforce in their safeguarding response, this will be evidenced through the yearly report.

Safeguarding Themes



YEAR 1 - Embed resources regarding identification and response to child sexual abuse and ongoing work in relation to domestic abuse

YEAR 2/3 – Familial factors such as: Substance misuse, intergenerational impact, blended families

Initial actions to incorporate into the business plan to achieve this:

Year 1 - Embed resources and approach around child sexual abuse and ongoing work in relation to domestic abuse

- ▶ Promotion of all related training – Child Sexual Abuse live toolkit tours – Consideration of safeguarding partner safeguarding practice week [Q2]
- ▶ Update strategy discussion template to include decision and rationale for the decision regarding a child sexual abuse medical assessment where child sexual abuse is suspected [Q1]
- ▶ Progression of joint PQA/Exploitation subgroup’s audit (A repeat of dip sample audit in response to HIOW Constabulary problem profile 2024/25) [Q3]
- ▶ IOWSCP CE Group to develop a priority action plan in response to the Baroness Casey Rapid Audit [Q1]
- ▶ Assurance in relation to confidence in recognising and responding to domestic abuse and awareness of child’s referral pathway (longitudinal evaluation from DA conference) [Q2]
- ▶ Shared communication approach to effective practice in relation to safeguarding children as victims of domestic abuse, this will be in partnership with Domestic Abuse Partnership Board [Q3]
- ▶ Continuing review/assurance of the number of children on a CP plan for reasons of child sexual abuse
- ▶ Brighton and Hove JTAI report – Multi agency response to intra familial child sexual abuse . Consideration and benchmarking against relevant recommendations/findings [Q1]
- ▶ Once agreed by IOWSCP Executive recommendations from the Performance and Quality Assurance Audit considering the multi agency response to safeguarding children as victims of domestic abuse to be progressed and monitored [From Q1]