



Isle of Wight  
Safeguarding  
Children  
Partnership

## Isle of Wight Safeguarding Children Partnership INDUCTION PACK FOR NEW GROUP MEMBERS

# CONTENTS

WHAT IS THE ISLE OF WIGHT SAFEGUARDING CHILDREN PARTNERSHIP (IOWSCP)? .....	3 - 4
WHAT DOES THE IOWSCP DO? .....	4
IOWSCP STRUCTURE .....	5
PARTNERSHIP STRUCTURE .....	6
BUSINESS PRIORITIES & YEARLY REPORT.....	7
SUBGROUP FUNCTIONS .....	8 - 9
BOARD AND SUBGROUP MEMBERS .....	10
ROLES & RESPONSIBILITIES .....	11 - 12
COMMUNICATIONS .....	13
CONFERENCE & TRAINING .....	14
GLOSSARY .....	15

## IOW Safeguarding Children Partnership - Get in touch:

Email: SCP@iow.gov.uk  
Debbie.Key@hants.gov.uk  
Kelly.Diamond@iow.gov.uk  
Sally.Bloomfield@iow.gov.uk  
Amanda.Findon@iow.gov.uk

Telephone: 01983 814545

Website: [www.iowscp.org.uk](http://www.iowscp.org.uk)

Twitter: [@IOWSCP](https://twitter.com/IOWSCP)



# WHAT IS THE ISLE OF WIGHT SAFEGUARDING CHILDREN PARTNERSHIP (IOWSCP)?

[Working Together to Safeguard Children 2023](#) states there is a shared responsibility between organisations to safeguard and promote the welfare of all children in a local area. The responsibility for this joined-up work rests with three safeguarding partners who have a shared and equal duty to make arrangements to work together. On the Isle of Wight this arrangement is the Isle of Wight Safeguarding Children Partnership (IOWSCP).

## THE THREE SAFEGUARDING PARTNERS



The Safeguarding Partners are required to set out which organisations and agencies are required to work as part of their arrangements. These organisations and agencies are referred to as **Relevant Agencies** and when nominated by the safeguarding partners should act in accordance with the arrangements.

## THE IOWSCP RELEVANT AGENCIES

Adult Mental Health Services	Housing providers	Isle of Wight NHS Trust
Child and Adolescent Mental Health Services (CAMHS)	Inclusion IOW	Youth Justice Service (YJS)
Child and Family Court Advisory Service (CAFCASS)	Isle of Wight Coroner's Office	Language Schools
Early Years Settings	Isle of Wight Primary Care providers	National Probation Service (NPS)
Education establishments	Isle of Wight Council, Adult's Social Care	NHS England/Improvement
Faith groups	Isle of Wight Council, Children's Social Care	Paragon
Hampshire & Isle of Wight Fire & Rescue Service	Isle of Wight Council, Education, and Inclusion	Sporting organisations
Hampshire and IOW Healthcare Foundation NHS Trust	Isle of Wight Council, Housing	The Office of the Police and Crime Commissioner (OPCC)
Healthcare providers	Isle of Wight Council, Public Health	Voluntary Sector organisations
HMP Isle of Wight	Isle of Wight Council, Regulatory Services	

The IOWSCP is a strategic partnership body. Other than the part-time presence of an Independent Scrutineer and a small Partnership Team, **it has no existence other than as a collective unit**. This means agencies must ensure their organisations and leaders actively share in leadership and shaping the Partnership, and in delivering its priorities.

The IOWSCP has an **Independent Scrutineer**. The Independent Scrutineer is appointed by, and accountable to, the three Safeguarding Partners. The Scrutineer acts as a critical friend, encouraging reflection on practice and

## WHAT DOES THE IOWSCP DO?

**The IOWSCP provides the safeguarding arrangements under which the three Safeguarding Partners and Relevant Agencies work together to:**

- Coordinate their safeguarding services
- Identify and respond to the needs of children on the Isle of Wight
- Commission and publish local child safeguarding practice reviews
- Provide scrutiny to ensure the effectiveness of the arrangements

Helping and protecting children through a coordinated approach is everyone's responsibility. Through collaborative working between organisations who work with children, young people and families (including those who work with parents/carers) the ambition of our arrangements is that everyone can recognise, respond and fulfil their responsibilities to ensure that children, young people and families are effectively safeguarded and supported.

**It is essential that both professionals and organisations learn lessons and share good practice and the IOWSCP is committed to fostering a culture of reflective practice, learning and continuous improvement that enables the Safeguarding Partners and Relevant Agencies to:**

- Identify and share concerns regarding safety and welfare of children
- Highlight commonly recurring themes that require further investigation
- Share learning, including from success, from across the safeguarding system

openness to improving services and provides an objective assessment of the effectiveness of the safeguarding arrangements including how they are working for children and families as well as practitioners. The Independent Scrutineer is **Scott MacKechnie**.

Ashley Whittaker, Director of Children's Services at the Isle of Wight Council is the agreed chair of the Partnership.

Further information on the IOWSCP is available in our Local Safeguarding Arrangements which is available on our website on our [About Us](#) webpage.

The [IOWSCP's Learning and Improvement Framework](#) explains our approach to learning and improvement. The building blocks to this framework are:

### **Learning from data and a scrutiny**

- a) Overseeing a robust multi-agency dataset
- b) Scrutiny programme

### **Learning from experience**

- a) Conducting Local Child Safeguarding Practice Reviews (LCSPRs)
- b) Identification of learning

### **Improving services**

- a) Embedding learning in practice
- b) Evaluation of learning

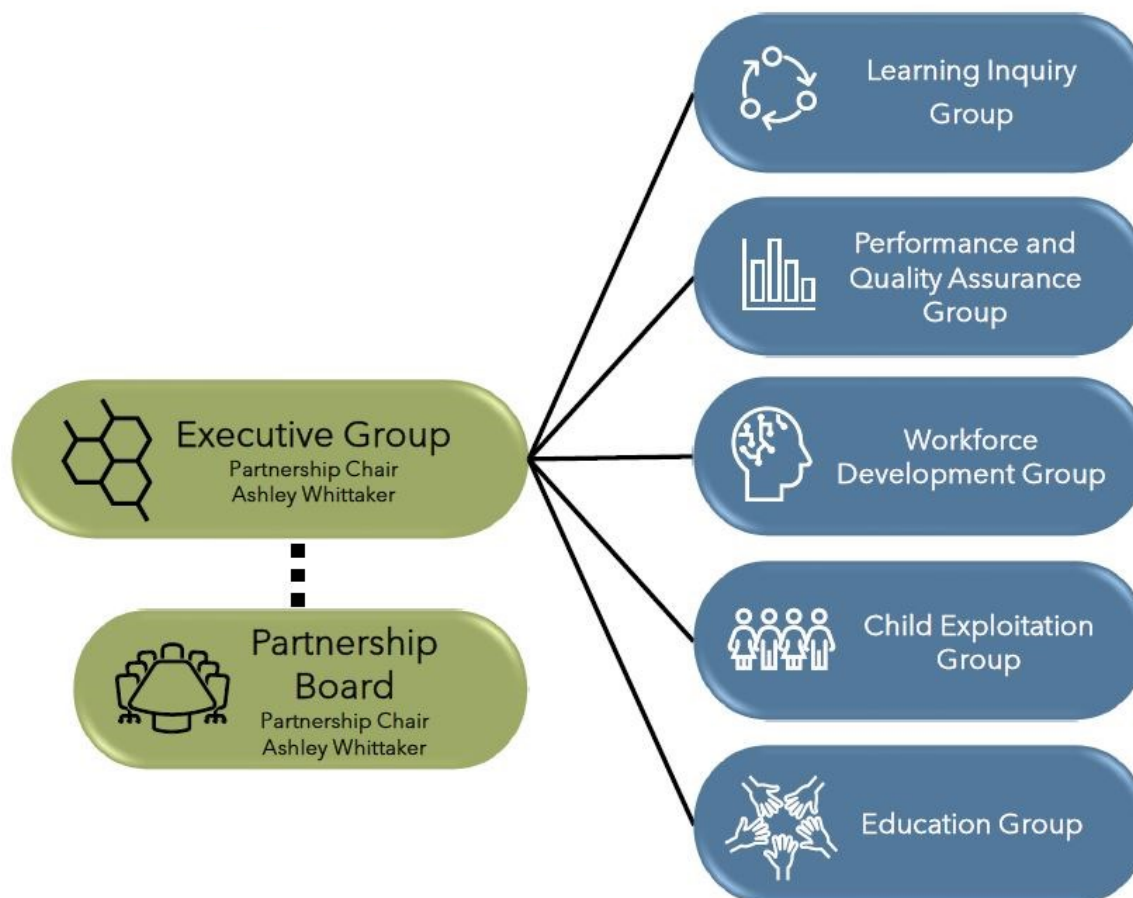
### **Front-line intelligence**

- a) Front-line visits
- b) Learning and development feedback
- c) Staff surveys

### **External learning**

- a) National Research and Child Safeguarding Practice Reviews
- b) Strategic Partnership feedback
- c) Inspection feedback
- d) Themed reports

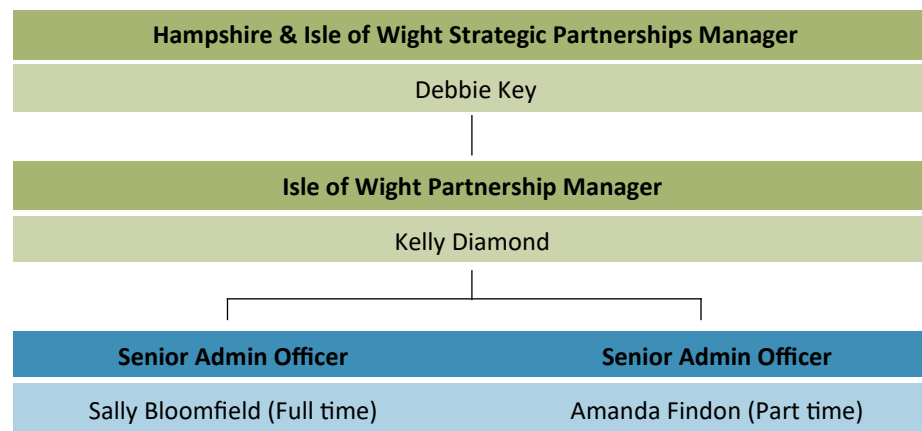
# IOWSCP STRUCTURE



- Functional Links**
- Children's Trust Board
  - Corporate Parenting Board
  - Community Safety Partnership
  - Domestic Abuse Partnership Board
  - Family Justice Board
  - Health and Wellbeing Board (HWB)
  - IOW Safeguarding Adults Board (SAB)
  - Missing, Exploited and Trafficked Risk Assessment Conference (METRAC)
  - Multi-Agency Public Protection Arrangements (MAPPA)
  - Multi-Agency Risk Assessment Conference (MARAC)
  - Violence Reduction Unit (VRU)

- The Executive Group, which meets quarterly, comprises of leads from the three Safeguarding Partners and the IOWSCP subgroup chairs.
- Representatives from the three Safeguarding Partners and many of the Relevant Agencies are members of the IOWSCP Partnership Board, which meets quarterly.
- Subgroups meet quarterly and report to the Executive Group.
- The work of the IOWSCP is coordinated by the Partnership Team. This small team works closely with the Safeguarding Partners, Independent Chair and Relevant Agencies to ensure the Partnership operates effectively and fulfils its statutory requirements, and is responsible for the day-to-day running of the Partnership.

# PARTNERSHIP STRUCTURE



**The Strategic Partnerships Manager (Debbie Key)** is responsible for co-ordinating and managing the work of the IOWSCP, including ensuring the scrutiny and monitoring of practice as well as promoting partnership working across the Island's statutory, voluntary and community sectors. They maintain an awareness of developments in government direction, strategy, and policy as it relates to safeguarding and to ensure that IOWSCP undertakes work in the full light of this knowledge. They are the principal point of liaison for the Independent Chair, ensuring that they are briefed, prepared, and supported to deliver the Chair role effectively. They also develop and maintain strategic relationships with other Safeguarding Children's Partnerships and regional networks and supports IOW engagement with the HIPS LSCPs and all HIPS wide strategic work programmes.

**The Partnership Manager (Kelly Diamond)** coordinates the administrative support, the work of the IOWSCP, and associated subgroups and task and finish groups, working closely with the subgroup chairs. They work with the Strategic Partnerships Manager to design the Business Plan and oversee its implementation and monitor its priorities and actions. They lead on the implementation and monitoring of scrutiny activity, such as case file audits, the 175/157 Education Audit and Local Child Safeguarding Practice Reviews (LCSPR). Together with the WFD group they develop and progress the IOWSCP's annual

workforce development training programme and create the annual IOWSCP Yearly Report.

**Senior Admin Officer (Sally Bloomfield)** is responsible for the administration of the Executive Group, Partnership Board, Learning Inquiry Group (LIG), Performance & Quality Assurance Group (PQA) and the Exploitation Strategy Delivery Plan Group.

**Senior Admin Officer (Amanda Findon)** is responsible for the administration of the Workforce Development Group (WFD), Education Group and learning and development events.

The IOWSCP works closely with the Hampshire, Portsmouth, and Southampton (HIPS) Safeguarding Children Partnerships to develop policies and procedures that are to be used by practitioners across the whole of Hampshire and the Isle of Wight. Further information is available in the Communications section of this document - page 12.



## BUSINESS PLAN

The IOWSCP Business Plan outlines the agreed priorities for the IOWSCP. The current Business Plan is available on our [Governance documents](#) website page.

The objectives within the Business Plan are undertaken by the subgroups or task and finish groups may be set up, either within the IOWSCP or within HIPS. For the current Business Plan, we have the following 3 areas of focus:

- **Working to ensure a multi-agency family approach to safeguarding children through their engagement in education.**
- **Promoting a multi-agency, whole-system approach to safeguarding and promoting the wellbeing of children, focused on preventing neglect and cumulative harm.**
- **Embedding the changes in Working Together to Safeguard Children 2023.**

## YEARLY REPORT

Each year the IOWSCP has a statutory responsibility to produce an Yearly Report which sets out what has been done in the year as a result of the Partnership arrangements and how effective these arrangements have been in safeguarding children on the Isle of Wight as laid out in [Working Together to Safeguard Children](#).

This report is published on our website and presented for scrutiny to several Trusts and Boards within the Isle of Wight Council, Hampshire and Isle of Wight Police, and Integrated Care Board.

The latest yearly report can be found on our [Governance documents](#) website page.



# GROUP FUNCTIONS

## EXECUTIVE GROUP

**Chair:** Ashley Whittaker, Director of Children's Services, IWC

**PURPOSE:** To set the performance, policy, and strategic priorities for the IOWSCP. It is responsible for ensuring that statutory requirements are met, and it sets the priorities for its Business Plan according to local issues and demands with evidence of clear improvement priorities to improve outcomes.

Terms of Reference: Available on the [Governance documents](#) page of our website. Administrator: Sally Bloomfield

## PERFORMANCE AND QUALITY ASSURANCE

**Chair:** Kay Jones, Area Director, Children's Social Care, IWC

**PURPOSE:** To co-ordinate quality assurance and evaluate the effectiveness of what is done by Partner Agencies, individually and collectively to safeguard and promote the welfare of children. It has oversight of all multi-agency and single agency audits, section 11 audits, and analysis of performance data about safeguarding within Relevant Agencies on the Isle of Wight.

Terms of Reference: Available on the [Governance documents](#) page of our website. Administrator: Sally Bloomfield

## LEARNING AND INQUIRY GROUP

**Chair:** Kay Jones, Area Director, Children's Social Care, IWC

**PURPOSE:** To involve agencies, front line staff and families in a collective endeavour to reflect and learn from cases in order to improve practice in the future to safeguard children. This can include reviews of good practice. Further information about learning reviews can be found on our [website](#).

Terms of Reference: Available on the [Governance documents](#) page of our website. Administrator: Sally Bloomfield



## EXPLOITATION STRATEGY DELIVERY GROUP

**Chair:** Matt Watson, Chief Inspector, Hampshire and Isle of Wight Police

**PURPOSE:** To develop and oversee the IOW Exploitation Action Plan in response to the HIPS Exploitation Strategy.

Terms of Reference: Available on the [Governance documents](#) page of our website. Administrator: Sally Bloomfield

## WORKFORCE DEVELOPMENT GROUP (WFD)

**Joint with IOW Safeguarding Adults Board (IOWSAB)**

**Chair:** Sarah Teague, Strategic Lead for Learning and Development, IWC

**PURPOSE:** To understand need, procure, co-ordinate, promote, quality assure and evaluate training and development activities for the children and family workforce on behalf of the IOWSCP and SAB. Producing an annual multi-agency training plan aligned to the IOWSCP and IOWSAB business plans that also reflects recommendations arising from inspections, audits and learning reviews/Safeguarding Adult Reviews.

Terms of Reference: Available on the [Governance documents](#) page of our website. Administrator: Amanda Findon

## EDUCATION GROUP

**Chair:** Naomi Carter, Service Director, Education, Inclusion & Access, IWC

**PURPOSE:** To facilitate communication across the education sector regarding their statutory safeguarding duties, the local safeguarding challenges and to take responsibility for disseminating learning from audits and learning reviews. The group is pivotal in developing and sharing increasingly strong safeguarding practice, identifying strategic and practice issues from within the sector, and making recommendations to the Board. The Education group is responsible for ensuring the Safeguarding in Education Self-Assessment Audit process is completed on an annual basis and a report of findings is written. Any actions from the process are monitored via an audit action tracker.

Terms of Reference: Available on the [Governance documents](#) page of our website. Administrator: Amanda Findon



# GROUP MEMBERS

Organisation	Sector	Executive Group	Board	Learning Inquiry Group	Performance & Quality Assurance Group	Education Group	Exploitation Strategy Delivery Group	Workforce Development Group
Adult Social Care, Isle of Wight Council	IWC		X					X
Barnardo's	Voluntary				X		X	
Bembridge Primary School	Education					X		
CAMHS	Health			X	X		X	
Carisbrooke Clever Cloggs Day Care	Education					X		
<b>Children's Services, Isle of Wight Council</b>	IWC	X	X	X	X		X	X
<b>Integrated Care Board</b>	Health	X	X	X	X		X	X
Community Safety Partnership, Isle of Wight Council	IWC						X	X
Cowes Enterprise College	Education					X		
Early Help, Isle of Wight Council	IWC							X
Early Years, Isle of Wight Council	IWC					X		
Education, Isle of Wight Council	IWC	X	X	X		X	X	
Education, Inclusion & Access, Isle of Wight Council	IWC				X	X	X	
<b>Hampshire &amp; Isle of Wight Constabulary</b>	Police	X	X	X	X	X	X	X
Hampshire & Isle of Wight Fire & Rescue Service	Fire Service		X		X			X
Hampshire and IOW Healthcare Foundation NHS Trust	Health		X	X	X	X		X
Homestart	Voluntary							X
Housing, Isle of Wight Council	IWC				X			
Isle of Wight College	Education					X		
Isle of Wight NHS Trust	Health	X	X	X	X		X	X
Isle of Wight Safeguarding Adults Board	IWC		X					X
Learning and Development, Isle of Wight Council	IWC	X	X					X
Local Authority Designated Officer, Isle of Wight Council	IWC					X		
Children's Reception Team and Multi-Agency Safeguarding Hub	IWC				X			
Medina House School	Education					X		
National Probation Service	Probation		X	X	X			X
NHS England & NHS Improvement	Health		X					
Niton Pre-school	Education					X		
Portsmouth Diocese	Faith		X			X		
Primary School representative	Education		X					
Public Health, Isle of Wight Council	IWC		X	X	X	X		X
Regulatory Services, Isle of Wight Council	IWC		X					
Ryde School	Education					X		
Secondary School representative	Education		X					
SEN Service, Isle of Wight Council	Education				X	X	X	
Special School representative	Education		X					
St Saviour's Primary School	Education					X		
The Federation of the Church Schools of Shalfleet and Yarmouth	Education					X		
UKSA	Voluntary					X		
Violence Reduction Unit	Police						X	
Voluntary Sector Forum representative	Voluntary		X		X			
Youth Justice Service	IWC		X	X	X		X	

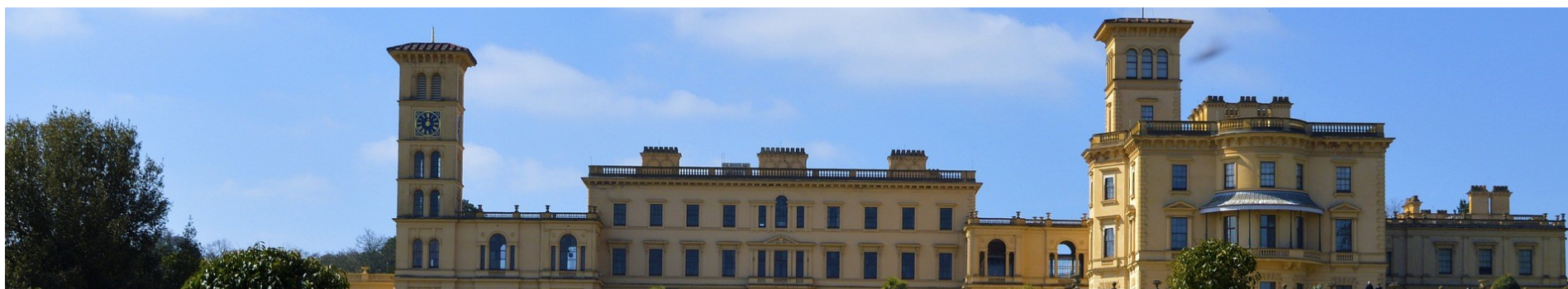
# ROLES & RESPONSIBILITIES

## SUBGROUP CHAIR

The main role for the Chairs of IOWSCP subgroups is to steer the members in achieving the agreed objectives set out in the annual work plan.

The Chair must therefore be given appropriate capacity by their organisation to achieve the roles set out below:

- To ensure their attendance at all meetings and confirm any necessary alternative cover arrangements with the partnership team in advance of the meeting.
  - To identify a deputy chair in partnership with group members.
  - To produce the annual work plan with the partnership team and members of the group, ensuring that it contributes to the objectives of the IOWSCP Business Plan.
  - To produce and review the Terms of Reference with the group members on an annual basis.
  - To identify project leaders for individual tasks/activity.
  - To steer the work of members and ensure assigned tasks are completed.
  - To provide appropriate updates/reports on the work of the group to the IOWSCP Executive including the independent scrutineer
- To bring to the attention of the IOWSCP any issues (e.g. capacity, agency representation) that may impede the progress of the group.
  - To provide robust scrutiny and oversight of the delivery of actions within respective work plans and to escalate any risks or concerns to the IOWSCP.
  - To agree the agenda for each group meeting with the partnership team.
  - To regularly review the membership of the group and ensure that it is both representative and effective.
  - To ensure that the group promotes equality, diversity and inclusion through policies and practice.
  - To play a part in raising awareness of safeguarding within their own organisation and the wider community on the IOW, disseminating information from the group to their agency.



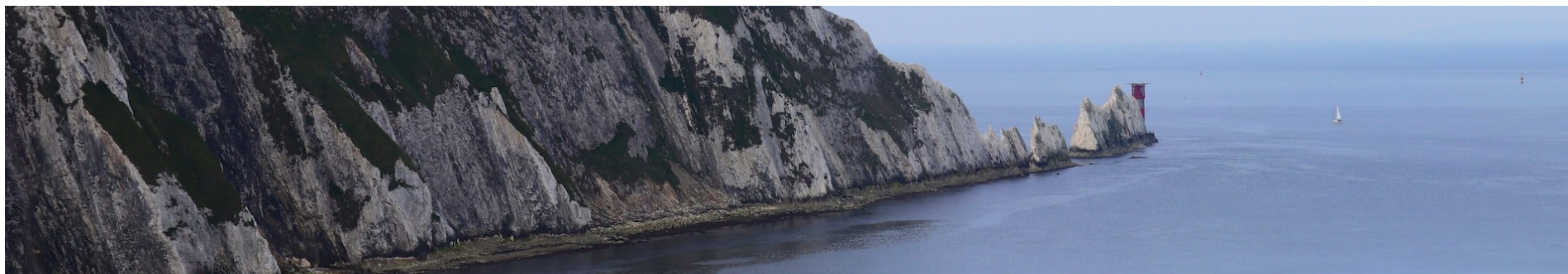
# ROLES & RESPONSIBILITIES

## SUBGROUP MEMBER

**The main role of subgroup members is to contribute to the effective collaborative work of the Group by sharing responsibility with other members for achieving the objectives set out in the work plan. Members will need to be given appropriate capacity by their organisation to achieve the role set out below:**

- To ensure their agency is appropriately represented at all meetings. Any member delegating attendance to another colleague, must ensure their deputy has the same decision-making authority. Any substitute should be of the same grade or one grade lower within their organisational structure.
- To read the papers on the agenda in advance of the meetings and have access to copies on the day.
- To assist the group chair in producing and achieving the annual work plan, ensuring consistency with the strategic and business objectives of the IOWSCP.
- To ensure the provision of accurate and timely performance and quality assurance reports to the group and to resolve barriers to obtaining key information requested by the group chair.
- To suggest relevant safeguarding agenda items to the chair and deliver items relevant to their own organisation or subject knowledge at meetings.

- To ensure that their agency contributes effectively to planned audits and improvement activities.
- To identify and engage non-members to assist with specific tasks/activities.
- To play a part in raising awareness of safeguarding within their own organisation and the wider community on the IOW, disseminating information from the subgroup back to their agency.
- To identify barriers to delivery of IOWSCP activities / projects /audits and escalate to the chair for discussion and resolution.
- To ensure that the group promotes equality of opportunity through policies and practice.
- Effectively promote and implement IOWSCP and HIPS policies and procedures.
- To maintain up-to-date knowledge of safeguarding issues, undertaking personal training as required.



# COMMUNICATIONS

**IOWSCP WEBSITE:** [www.iowscp.org.uk](http://www.iowscp.org.uk)

The IOWSCP website provides information, resources, guidance and learning and development for practitioners, parents/carers and children on a number of topics. Some key features of the website include:

- Quick links to key procedures, toolkits, safeguarding referral form, CPI form, thresholds chart, training and resources
- Access to the HIPS Policies and Procedures website
- Information on local services, local guidance, and referral forms
- Links to national organisations and charities that provide services on a range of subjects such as: bullying, child abuse, child exploitation, domestic abuse, bereavement, LGBT+, relationships, mental health and online safety
- Toolkits for: Every Sleep Counts, Family Approach, ICON, Neglect and Unidentified Adults
- Individual pages on specific subjects for both parents, carers, children and the voluntary and community sector on: Allegations against staff, Bullying, Child death, Child exploitation, Domestic abuse, Learning reviews, Neglect, Training, Online safety, Private fostering, Sexual abuse, Types of abuse, Child protection enquiries, Child sexual abuse.

**HIPS PROCEDURES WEBSITE:** The IOWSCP works closely with the Hampshire, Portsmouth, and Southampton (HIPS) Safeguarding Children Partnerships to develop policies and procedures for practitioners across the whole of Hampshire and the Isle of Wight. These policies and procedures are on the [HIPS Procedures website](#).

**PARTNERSHIP NEWSLETTER:** The Partnership Team produce a quarterly newsletter which details the work the Partnership have undertaken in the last quarter, upcoming events and training and share information on behalf of Partner agencies. The newsletters are available on our website [here](#).

**EDUCATION GROUP NEWSLETTER:** The Education Subgroup share with Isle of Wight schools and early years settings and a quarterly newsletter which disseminates information to their staff and Governors on issues that are raised and discussed at quarterly Education subgroup meetings.

**TOOLKITS AND STRATEGIES:** In partnership with the Hampshire Partnership or across HIPS, strategies are created to address key safeguarding themes like child exploitation and neglect. [Toolkits](#) help professionals understand and respond to these issues, offering strategies, practical tools, research, case studies, and more.

**PRACTITIONER BRIEFINGS:** [Practitioner briefings](#) summarise key learnings, recommendations, and messages from case reviews, audits, and reports. They provide useful resources for professionals to share within their organizations, ensuring frontline practitioners benefit from the insights.

**SAFEGUARDING THEME OVERVIEW PACKS (STOP) :** [Safeguarding Theme Overview Packs \(STOP\)](#) offer agencies key tools and resources to help keep Isle of Wight children safe. They also include resources and guidance for parents and carers.

**SAFEGUARDING PRACTICE WEEKS:** Safeguarding Practice Weeks held throughout each year are an opportunity to raise awareness of important safeguarding issues and the resources available to support practitioners.

**X @IOWSCP:** The IOWSCP uses X to share safeguarding messages through the year and advertise training and events.

## CONFERENCE

The Partnership holds a multi-agency conference for around 200 professionals. Themes for the event are developed following attendee feedback the previous year and national and local themes. In the last few years conference themes have been:

- 'Safeguarding Children on the Isle of Wight'
- 'Growing Up Online'
- 'Building Emotional Resilience'
- 'Adolescents at Risk'

Attendees are given the opportunity to give their views on child protection on the IOW with 3 things they think are going well and 3 things that could be improved.

The Voice of the Child is always an integral part of the conference agenda and captured in several ways, including having Island children co-compere with the Independent Chair, participate in presentations, and join table discussions.

The conferences have always been well received and provide an excellent opportunity for professionals from a wide variety of agencies to come together to share ideas and information, receive training, and build on professional and agency relationships.



## LEARNING & DEVELOPMENT

Each year the IOWSCP develops and funds a Workforce Development Learning and Development Programme for Isle of Wight professionals to encourage development of confidence, knowledge, and skills in the workforce to safeguard children on the Island. The programme is detailed on our [Training webpage](#) and regularly updated with new courses and dates. Learning and development is hosted on the Isle of Wight Council's Learning Hub.

We also advertise on our webpage safeguarding related learning and events provided by other agencies for multi-agency professionals.

## GLOSSARY

CAMHS — Child and Adolescent Mental Health Services

CAFCASS — Child and Family Court Advisory Service

CDOP — Child Death Overview Panel

CSP — Community Safety Partnership

DAF — Domestic Abuse Forum

HIPS — Hampshire, Isle of Wight, Portsmouth and Southampton Safeguarding Children Partnerships

HWB — Health and Wellbeing Board

ICB — Integrated Care Board

IOWSAB — Isle of Wight Safeguarding Adults Board

IOWSCP — Isle of Wight Safeguarding Children Partnership

IWC — Isle of Wight Council

LCSPR — Local Child Safeguarding Practice Reviews

LIG — Learning Inquiry Group

METRAC — Missing, Exploited and Trafficked Risk Assessment Conference

MAPPA — Multi-Agency Public Protection Arrangements

MARAC — Multi-Agency Risk Assessment Conference

NPS — National Probation Service

OPCC — Office of the Police and Crime Commissioner

PQA — Performance & Quality Assurance Group

SSORG — Serious Sexual Offences Reduction Group

VRU — Violence Reduction Unit

WFD — Workforce Development Group

