



Isle of Wight Safeguarding Children Partnership INDUCTION PACK FOR NEW GROUP MEMBERS

CONTENTS

WHAT IS THE ISLE OF WIGHT SAFEGUARDING CHILDREN PARTNERSHIP (IOWSCP)?	3 - 4
WHAT DOES THE IOWSCP DO?	4
IOWSCP STRUCTURE	5
PARTNERSHIP STRUCTURE	6
BUSINESS PLAN & YEARLY REPORT	7
SUBGROUP FUNCTIONS	8 - 9
BOARD AND SUBGROUP MEMBERS	10
ROLES & RESPONSIBILITIES	11
COMMUNICATIONS	12
CONFERENCE & TRAINING	13
GLOSSARY	14

IOW Safeguarding Children Partnership - Get in touch:

Email: SCP@iow.gov.uk
Debbie.Key@hants.gov.uk
Kelly.Diamond@iow.gov.uk
Sally.Bloomfield@iow.gov.uk
Amanda.Findon@iow.gov.uk

Telephone: 01983 814545

Website: www.iowscp.org.uk

Twitter: [@IOWSCP](https://twitter.com/IOWSCP)



WHAT IS THE ISLE OF WIGHT SAFEGUARDING CHILDREN PARTNERSHIP (IOWSCP)?

[Working Together to Safeguard Children 2018](#) states there is a shared responsibility between organisations to safeguard and promote the welfare of all children in a local area. The responsibility for this joined-up work rests with three safeguarding partners who have a shared and equal duty to make arrangements to work together. On the Isle of Wight this arrangement is the Isle of Wight Safeguarding Children Partnership (IOWSCP).

THE THREE SAFEGUARDING PARTNERS



The Safeguarding Partners are required to set out which organisations and agencies are required to work as part of their arrangements. These organisations and agencies are referred to as **Relevant Agencies** and when nominated by the safeguarding partners should act in accordance with the arrangements.

THE IOWSCP RELEVANT AGENCIES

Adult Mental Health Services	Isle of Wight Coroner's Office	Language Schools
Child and Adolescent Mental Health Services (CAMHS)	Isle of Wight Primary Care providers	Love 146
Child and Family Court Advisory Service (CAFCASS)	Isle of Wight Council, Adult's Social Care	National Probation Service (NPS)
Early Years Settings	Isle of Wight Council, Children's Social Care	NHS England/Improvement
Education establishments	Isle of Wight Council, Education, and Inclusion	Paragon
Faith groups	Isle of Wight Council, Housing	Perinatal Mental Health, Southern Health
Hampshire & Isle of Wight Fire & Rescue Service	Isle of Wight Council, Public Health	Sporting organisations
Healthcare providers	Isle of Wight Council, Regulatory Services	The Office of the Police and Crime Commissioner (OPCC)
Housing providers	Isle of Wight NHS Trust	Voluntary Sector organisations
Inclusion IOW	Isle of Wight Youth Offending Team (YOT)	Solent NHS Trust

The IOWSCP is a strategic partnership body. Other than the part-time presence of an Independent Chair and a small Partnership Team, **it has no existence other than as a collective unit**. This means agencies must ensure their organisations and leaders actively share in leadership and shaping the Partnership, and in delivering its priorities.

The IOWSCP has an **Independent Chair** who acts as an independent scrutineer. The Chair is appointed by, and accountable to, the three Safeguarding Partners. The Chair acts as a critical friend, encouraging reflection on practice and

openness to improving services and provides an objective assessment of the effectiveness of the safeguarding arrangements including how they are working for children and families as well as practitioners. The current chair of the IOWSCP is **Derek Benson**. The new Independent Chair/Scrutineer is **Scott MacKechnie**.

Further information on the IOWSCP is available in our Local Safeguarding Arrangements which is available on our website on our [About Us](#) webpage.

WHAT DOES THE IOWSCP DO?

The IOWSCP provides the safeguarding arrangements under which the three Safeguarding Partners and Relevant Agencies work together to:

- coordinate their safeguarding services
- identify and respond to the needs of children on the Isle of Wight
- commission and publish local child safeguarding practice reviews
- provide scrutiny to ensure the effectiveness of the arrangements

Helping and protecting children through a coordinated approach is everyone's responsibility. Through collaborative working between organisations who work with children, young people and families (including those who work with parents/carers) the ambition of our arrangements is that everyone can recognise, respond and fulfil their responsibilities to ensure that children, young people and families are effectively safeguarded and supported.

It is essential that both professionals and organisations learn lessons and share good practice and the IOWSCP is committed to fostering a culture of reflective practice, learning and continuous improvement that enables the Safeguarding Partners and Relevant Agencies to:

- Identify and share concerns regarding safety and welfare of children
- Highlight commonly recurring themes that require further investigation
- Share learning, including from success, from across the safeguarding system

The [IOWSCP's Learning and Improvement Framework](#) explains our approach to learning and improvement. The building blocks to this framework are:

Learning from data and a scrutiny

- a) Overseeing a robust multi-agency dataset
- b) Scrutiny programme

Learning from experience

- a) Conducting Local Child Safeguarding Practice Reviews (LCSPRs)
- b) Identification of learning

Improving services

- a) Embedding learning in practice
- b) Evaluation of learning

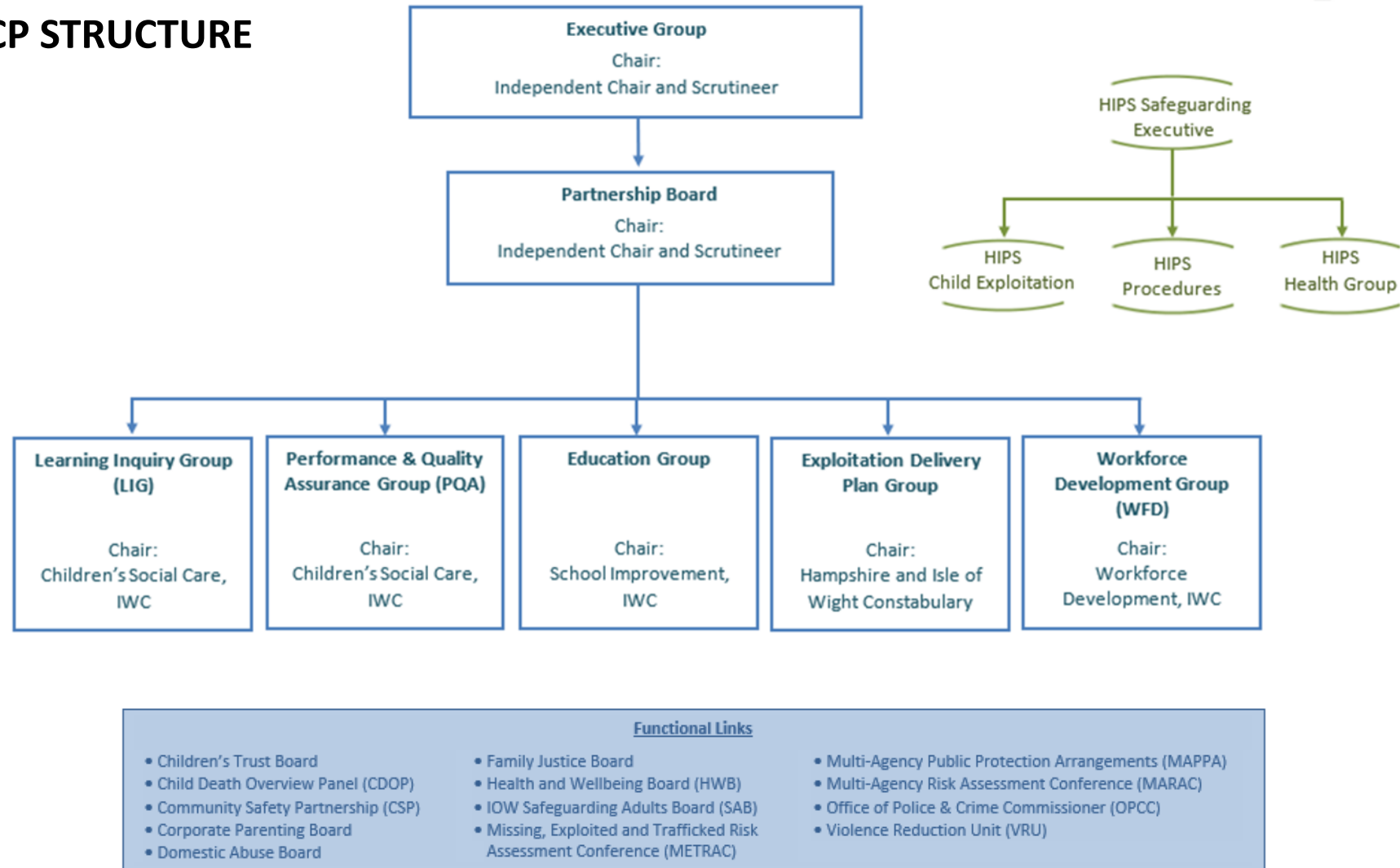
Front-line intelligence

- a) Front-line visits
- b) Training feedback
- c) Staff surveys

External learning

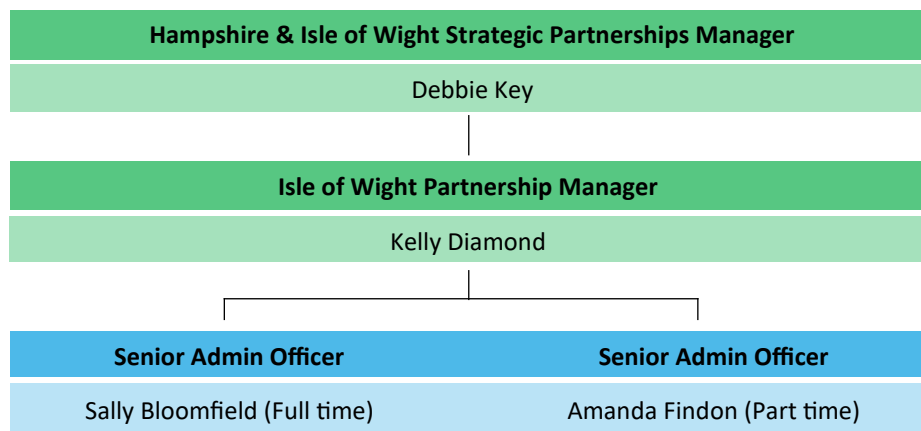
- a) National Research and Child Safeguarding Practice Reviews
- b) Strategic Partnership feedback
- c) Inspection feedback
- d) Themed reports

IOWSCP STRUCTURE



- The Executive Group, which meets quarterly, comprises of leads from the three Safeguarding Partners and the IOWSCP subgroup chairs.
- Representatives from the three Safeguarding Partners and many of the Relevant Agencies are members of the IOWSCP Partnership Board, which meets quarterly.
- Subgroups meet quarterly and report to the Executive Group.
- The work of the IOWSCP is coordinated by the Partnership Team. This small team works closely with the Safeguarding Partners, Independent Chair and Relevant Agencies to ensure the Partnership operates effectively and fulfils its statutory requirements, and is responsible for the day-to-day running of the Partnership.

PARTNERSHIP STRUCTURE



The Strategic Partnerships Manager (Debbie Key) is responsible for co-ordinating and managing the work of the IOWSCP, including ensuring the scrutiny and monitoring of practice as well as promoting partnership working across the Island's statutory, voluntary and community sectors. They maintain an awareness of developments in government direction, strategy, and policy as it relates to safeguarding and to ensure that IOWSCP undertakes work in the full light of this knowledge. They are the principal point of liaison for the Independent Chair, ensuring that they are briefed, prepared, and supported to deliver the Chair role effectively. They also develop and maintain strategic relationships with other Safeguarding Children's Partnerships and regional networks and supports IOW engagement with the HIPS LSCPs and all HIPS wide strategic work programmes.

The Partnership Manager (Kelly Diamond) coordinates the administrative support, the work of the IOWSCP, and associated subgroups and task and finish groups, working closely with the subgroup chairs. They work with the Strategic Partnerships Manager to design the Business Plan and oversee its implementation and monitor its priorities and actions. They lead on the implementation and monitoring of scrutiny activity, such as case file audits, the 175/157 Education Audit and Local Child Safeguarding Practice Reviews (LCSPR). Together with the WFD group they develop and progress the IOWSCP's annual

workforce development training programme and create the annual IOWSCP Yearly Report.

Senior Admin Officer (Sally Bloomfield) is responsible for the administration of the Executive Group, Partnership Board, Learning Inquiry Group (LIG), Performance & Quality Assurance Group (PQA) and the Exploitation Strategy Delivery Plan Group.

Senior Admin Officer (Amanda Findon) is responsible for the administration of the Workforce Development Group (WFD), Education Group and training and events.

The IOWSCP works closely with the Hampshire, Portsmouth, and Southampton (HIPS) Safeguarding Children Partnerships to develop policies and procedures that are to be used by practitioners across the whole of Hampshire and the Isle of Wight. Further information is available in the Communications section of this document - page 12.



BUSINESS PLAN

The IOWSCP Business Plan outlines the agreed priorities for the IOWSCP. The current Business Plan is available on our [About Us](#) website page.

The objectives within the Business Plan are undertaken by the subgroups or task and finish groups may be set up, either within the IOWSCP or within HIPS. For the current Business Plan, we have the following 3 areas of focus:

- **To implement the multi-agency HIPS Child Sexual Abuse Strategy**
- **To identify, understand and respond to vulnerable children with disrupted attendance**
- **To promote and embed the work of the Partnership**

YEARLY REPORT

Each year the IOWSCP has a statutory responsibility to produce an Yearly Report which sets out what has been done in the year as a result of the Partnership arrangements and how effective these arrangements have been in safeguarding children on the Isle of Wight as laid out in [Working Together to Safeguard Children](#).

This report is published on our website and presented for scrutiny to several Trusts and Boards within the Isle of Wight Council, Hampshire and Isle of Wight Police, and Integrated Care Board.

The latest yearly report can be found on our [About Us](#) website page.



GROUP FUNCTIONS

EXECUTIVE GROUP

Chair: Scott MacKechnie, Independent Chair and Scrutineer, IOWSCP

PURPOSE: To set the performance, policy, and strategic priorities for the IOWSCP. It is responsible for ensuring that statutory requirements are met, and it sets the priorities for its Business Plan according to local issues and demands with evidence of clear improvement priorities to improve outcomes.

Terms of Reference: Available on the [About Us](#) page of our website

Administrator: Sally Bloomfield

PERFORMANCE AND QUALITY ASSURANCE

Chair: Kim Goode, Area Director, IOW Children's Social Care, IWC

PURPOSE: To co-ordinate quality assurance and evaluate the effectiveness of what is done by Partner Agencies, individually and collectively to safeguard and promote the welfare of children. It has oversight of all multi-agency and single agency audits, section 11 audits, and analysis of performance data about safeguarding within Relevant Agencies on the Isle of Wight.

Terms of Reference: Available on the [About Us](#) page of our website

Administrator: Sally Bloomfield

LEARNING AND INQUIRY GROUP

Chair: Steph How, Assistant Director, IOW Children's Social Care, IWC

PURPOSE: To involve agencies, front line staff and families in a collective endeavour to reflect and learn from cases in order to improve practice in the future to safeguard children. This can include reviews of good practice. Further information about learning reviews can be found on our website [here](#).

Terms of Reference: Available on the [About Us](#) page of our website

Administrator: Sally Bloomfield



EXPLOITATION STRATEGY DELIVERY GROUP

Chair: Sharath Ranjan, Chief Inspector, Hampshire and Isle of Wight Police

PURPOSE: To develop and oversee the IOW Exploitation Action Plan in response to the HIPS Exploitation Strategy.

Terms of Reference: Available on the [About Us](#) page of our website

Administrator: Sally Bloomfield

WORKFORCE DEVELOPMENT GROUP (WFD)

Joint with IOW Safeguarding Adults Board (IOWSAB)

Chair: Sarah Teague, Strategic Lead for Learning and Development, IWC

PURPOSE: To understand need, procure, co-ordinate, promote, quality assure and evaluate training and development activities for the children and family workforce on behalf of the IOWSCP and SAB. Producing an annual multi-agency training plan aligned to the IOWSCP and IOWSAB business plans that also reflects recommendations arising from inspections, audits and learning reviews/Safeguarding Adult Reviews.

Terms of Reference: Available on the [About Us](#) page of our website

Administrator: Amanda Findon

EDUCATION GROUP

Chair: Martyn Beales, School Improvement Manager, Hampshire CC

PURPOSE: To facilitate communication across the education sector regarding their statutory safeguarding duties, the local safeguarding challenges and to take responsibility for disseminating learning from audits and learning reviews. The group is pivotal in developing and sharing increasingly strong safeguarding practice, identifying strategic and practice issues from within the sector, and making recommendations to the Board. The Education group is responsible for ensuring the Safeguarding in Education Self-Assessment Audit process is completed on an annual basis and a report of findings is written. Any actions from the process are monitored via an audit action tracker.

Terms of Reference: Available on the [About Us](#) page of our website

Administrator: Amanda Findon



GROUP MEMBERS

Organisation	Sector	Executive Group	Board	Learning Inquiry Group	Performance & Quality Assurance Group	Education Group	Exploitation Strategy Delivery Group	Workforce Development Group
Adult Social Care, Isle of Wight Council	IWC		X					X
Barnardo's	Voluntary				X		X	
Bembridge Primary School	Education					X		
CAMHS	Health			X	X		X	
Carisbrooke Clever Cloggs Day Care	Education					X		
Children's Services, Isle of Wight Council	IWC	X	X	X	X		X	X
Integrated Care Board	Health	X	X	X	X		X	X
Community Safety Partnership, Isle of Wight Council	IWC						X	X
Early Help, Isle of Wight Council	IWC							X
Early Years, Isle of Wight Council	IWC					X		
Education, Isle of Wight Council	IWC	X	X	X		X	X	
Education & Inclusion, Isle of Wight Council	IWC				X	X	X	
Hampshire & Isle of Wight Constabulary	Police	X	X	X	X	X	X	X
Hampshire & Isle of Wight Fire & Rescue Service	Fire Service		X		X	X		
Homestart	Voluntary							X
Housing, Isle of Wight Council	IWC				X			
Isle of Wight College	Education					X		
Isle of Wight NHS Trust	Health	X	X	X	X		X	X
Isle of Wight Safeguarding Adults Board	IWC		X					X
Learning and Development, Isle of Wight Council	IWC	X	X					X
Local Authority Designated Officer, Isle of Wight Council	IWC					X		
Children's Reception Team and Multi-Agency Safeguarding Hub	IWC				X			
Medina House School	Education					X		
National Probation Service	Probation		X	X	X			X
NHS England & NHS Improvement	Health		X					
Niton Pre-school	Education					X		
Portsmouth Diocese	Faith		X			X		
Primary School representative	Education		X					
Public Health, Isle of Wight Council	IWC		X	X	X	X		X
Regulatory Services, Isle of Wight Council	IWC		X					
Ryde Academy	Education					X		
Ryde School	Education					X		
Secondary School representative	Education		X					
SEN Service, Isle of Wight Council	Education				X	X	X	
Solent NHS Trust	Health		X	X	X	X		X
Special School representative	Education		X					
St Saviour's Primary School	Education					X		
St Thomas of Canterbury Primary School	Education					X		
The Federation of the Church Schools of Shalfleet and Yarmouth	Education					X		
UKSA	Voluntary					X		
Violence Reduction Unit	Police						X	
Voluntary Sector Forum representative	Voluntary		X		X			
Youth Offending Team	IWC		X	X	X		X	X

ROLES & RESPONSIBILITIES

SUBGROUP CHAIR

The main role for the Chairs of IOWSCP subgroups is to steer the members in achieving the agreed objectives set out in the annual work plan. The Chair must therefore be given appropriate capacity by their organisation to achieve the roles set out below:

- To ensure their attendance at all meetings and confirm alternative cover arrangements with the Partnership Team in advance of the meeting.
- To identify a Deputy Chair.
- To produce the annual work plan with the Partnership Team and members of the Group, ensuring that it contributes to the objectives of the IOWSCP Business Plan.
- To produce and review the Terms of Reference with the Group members on an annual basis.
- To identify project leaders for individual tasks/activity.
- To steer the work of members and ensure assigned tasks are completed.
- To provide appropriate updates/reports on the work of the Group to the IOWSCP.
- To bring to the attention of the IOWSCP any issues (e.g. capacity, agency representation) that may impede the progress of the Group.
- To provide robust scrutiny and oversight of the delivery of actions within respective work plans and to escalate any risks or concerns to the IOWSCP.
- To agree the agenda for every Group meeting with the Partnership Team.
- To regularly review the membership of the Group and ensure that it is both representative and effective.
- To ensure that the Group promotes equality of opportunity through policies and practice.
- To play a part in raising awareness of safeguarding within their own organisation and the wider community on the IOW, disseminating information from the Group back to their agency.

SUBGROUP MEMBERS

The main role of subgroup members is to contribute to the effective collaborative work of the Group by sharing responsibility with other members for achieving the objectives set out in the work plan. Members will need to be given appropriate capacity by their organisation to achieve the role set out below:

- To ensure their agency is appropriately represented at all meetings. Any member delegating attendance to another colleague, must ensure their deputy has the same decision making authority. Any substitute should be of the same grade or one grade lower within their organisational structure.
- To read the papers on the agenda in advance of the meetings
- To assist the Group Chair in producing and achieving the annual work plan, ensuring consistency with the objectives of the IOWSCP.
- To ensure the provision of accurate and timely performance and quality assurance reports to the Group and to resolve barriers to obtaining key information requested by the Group Chair.
- To suggest relevant safeguarding agenda items to the Chair and deliver items relevant to their own organisation or subject knowledge at meetings.
- To ensure that their agency contributes effectively to planned audits and improvement projects.
- To identify and engage non-members to assist with specific tasks/activities.
- To play a part in raising awareness of safeguarding within their own organisation and the wider community on the IOW, disseminating information from the subgroup back to their agency.
- To identify barriers to delivery of IOWSCP activities/projects/audits and escalate to the Chair for discussion and resolution.
- To ensure that the Group promotes equality of opportunity through policies and practice.
- To effectively promote and implement SCP and HIPS policies and procedures.
- To maintain up-to-date knowledge of safeguarding issues, undertaking personal training as required.
- Members should notify their Board representative if circumstances arise where they are unable to contribute to the Group work plan or if they are unable to attend two or more meetings in a row.

COMMUNICATIONS

IOWSCP WEBSITE: www.iowscp.org.uk



The IOWSCP website provides information, resources, guidance and training for practitioners, parents/carers and children on a number of topics.

Some key features of the website include:

- Quick links to key protocols, strategies, toolkits, safeguarding referral form, CPI form, thresholds chart
- Access to the HIPS Policies and Procedures website
- Information on local services, local guidance, and referral forms
- Links to national organisations and charities that provide services on a range of subjects such as: bullying, child abuse, child exploitation, domestic abuse, bereavement, LGBT+, relationships, mental health and online safety
- Toolkits for: Every Sleep Counts, Family Approach, ICON, Neglect and Unidentified Adults
- Individual pages on specific subjects for both parents, carers and children on: Allegations against staff, Bullying, Child death, Child exploitation, Domestic abuse, Learning reviews, Neglect, Training, Online safety, Private fostering, Sexual abuse, Teenage relationships, Types of abuse, Child protection enquiries, Sexual abuse, Teenage relationships.

HIPS POLICIES WEBSITE: The IOWSCP works closely with the Hampshire, Portsmouth and Southampton (HIPS) Safeguarding Children Partnerships to develop policies and procedures which set out how agencies and individuals should work together to safeguard and promote the welfare of children. The target audience is all practitioners, including volunteers and front-line managers who have particular responsibilities for safeguarding children, as well as operational and senior managers, in:

- Agencies responsible for commissioning or providing services to children and their families and to adults who are parents
- Agencies with a particular responsibility for safeguarding and promoting the welfare of children.

These policies and procedures are on the HIPS Procedures website <https://hipsprocedures.org.uk/#> which has been developed to provide a set of chapters which comply with Working Together to Safeguard Children.

PARTNERSHIP NEWSLETTER: The Partnership Team produce a quarterly newsletter which details the work the Partnership have undertaken in the last quarter, upcoming events and training and share information on behalf of Partner agencies. The newsletters are available on our website [here](#).

EDUCATION GROUP NEWSLETTER: The Education Subgroup share with Isle of Wight Headteachers a quarterly newsletter which disseminates information to their staff and Governors on issues that are raised and discussed at quarterly Education subgroup meetings.

EXPLOITATION NEWSLETTER: The HIPS partnerships work together to tackle child exploitation. This quarterly newsletter keeps professionals in all four areas up-to-date with issues and progress discussed in the HIPS Child Exploitation meetings and to flag up local and national campaigns. These newsletters are available on our website [here](#).

Twitter @IOWSCP: The IOWSCP uses Twitter to share safeguarding messages through the year and advertise training and events.

CONFERENCE

The Partnership holds a multi-agency conference for around 200 professionals. Themes for the event are developed following attendee feedback the previous year and national and local themes. In the last few years conference themes have been:

- 'Safeguarding Children on the Isle of Wight'
- 'Growing Up Online'
- 'Building Emotional Resilience'
- 'Adolescents at Risk'

Attendees are given the opportunity to give their views on child protection on the IOW with 3 things they think are going well and 3 things that could be improved.

The Voice of the Child is always an integral part of the conference agenda and captured in several ways, including having Island children co-compere with the Independent Chair, participate in presentations, and join table discussions.

The conferences have always been well received and provide an excellent opportunity for professionals from a wide variety of agencies to come together to share ideas and information, receive training, and build on professional and agency relationships.



TRAINING

Each year the IOWSCP develops and funds a Workforce Development Training Programme for Isle of Wight professionals to encourage development of confidence, knowledge, and skills in the workforce to safeguard children on the Island. The programme is detailed on our [Training webpage](#) and regularly updated with new courses and dates. Training is hosted on the Isle of Wight Council's Learning Hub.

We also advertise on our webpage safeguarding related training and events provided by other agencies for multi-agency professionals.

GLOSSARY

CAMHS — Child and Adolescent Mental Health Services

CAFCASS — Child and Family Court Advisory Service

CDOP — Child Death Overview Panel

CSP — Community Safety Partnership

DAF — Domestic Abuse Forum

HIPS — Hampshire, Isle of Wight, Portsmouth and Southampton Safeguarding Children Partnerships

HWB — Health and Wellbeing Board

ICB — Integrated Care Board

IOWSAB — Isle of Wight Safeguarding Adults Board

IOWSCP — Isle of Wight Safeguarding Children Partnership

IWC — Isle of Wight Council

LCSPR — Local Child Safeguarding Practice Reviews

LIG — Learning Inquiry Group

METRAC — Missing, Exploited and Trafficked Risk Assessment Conference

MAPPA — Multi-Agency Public Protection Arrangements

MARAC — Multi-Agency Risk Assessment Conference

NPS — National Probation Service

OPCC — Office of the Police and Crime Commissioner

PQA — Performance & Quality Assurance Group

SSORG — Serious Sexual Offences Reduction Group

VRU — Violence Reduction Unit

WFD — Workforce Development Group

