



Isle of Wight  
Safeguarding  
Children  
Partnership

## Isle of Wight Safeguarding Children Partnership INDUCTION PACK FOR NEW GROUP MEMBERS



# CONTENTS

WHAT IS THE ISLE OF WIGHT SAFEGUARDING CHILDREN PARTNERSHIP (IOWSCP)? .....	3 - 4
WHAT DOES THE PARTNERSHIP DO? .....	5
THE STRUCTURE OF THE PARTNERSHIP .....	6
GROUP FUNCTIONS.....	7-8
GROUP MEMBERS .....	9
WHAT IS HIPS? .....	10
ROLES & RESPONSIBILITIES .....	11-12
BUSINESS PLAN, YEARLY REPORT AND LEARNING & DEVELOPMENT.....	13
COMMUNICATIONS .....	14
GLOSSARY AND USEFUL TERMS .....	15

## Isle of Wight Safeguarding Children Partnership - Get in touch:

Email: SCP@iow.gov.uk  
Debbie Key, HSCP & IOWSCP Strategic Partnerships Manager - Debbie.Key@hants.gov.uk  
Kelly Diamond, Partnership Manager - Kelly.Diamond@iow.gov.uk  
Sally Bloomfield, Senior Admin Officer - Sally.Bloomfield@iow.gov.uk  
Amanda Findon, Senior Admin Officer - Amanda.Findon@iow.gov.uk

Telephone: 01983 814545

Website: [www.iowscp.org.uk](http://www.iowscp.org.uk)

Information correct at the time of print—September 2025. Review due September 2027.



# WHAT IS THE ISLE OF WIGHT SAFEGUARDING CHILDREN PARTNERSHIP (IOWSCP)?

**Safeguarding children is everyone's responsibility and all agencies working with children, young people and their families should work together to safeguard children.**

[Working Together to Safeguard Children](#) states there is a shared responsibility between organisations to safeguard and promote the welfare of all children in a local area. The responsibility for this joined-up work rests with three 'Safeguarding Partners' who have a shared and equal duty to make arrangements to work together. On the Isle of Wight this arrangement is the Isle of Wight Safeguarding Children Partnership (IOWSCP).

The three Safeguarding Partners are the Isle of Wight Council, the Hampshire and Isle of Wight Integrated Care Board, and the Hampshire and Isle of Wight Police.



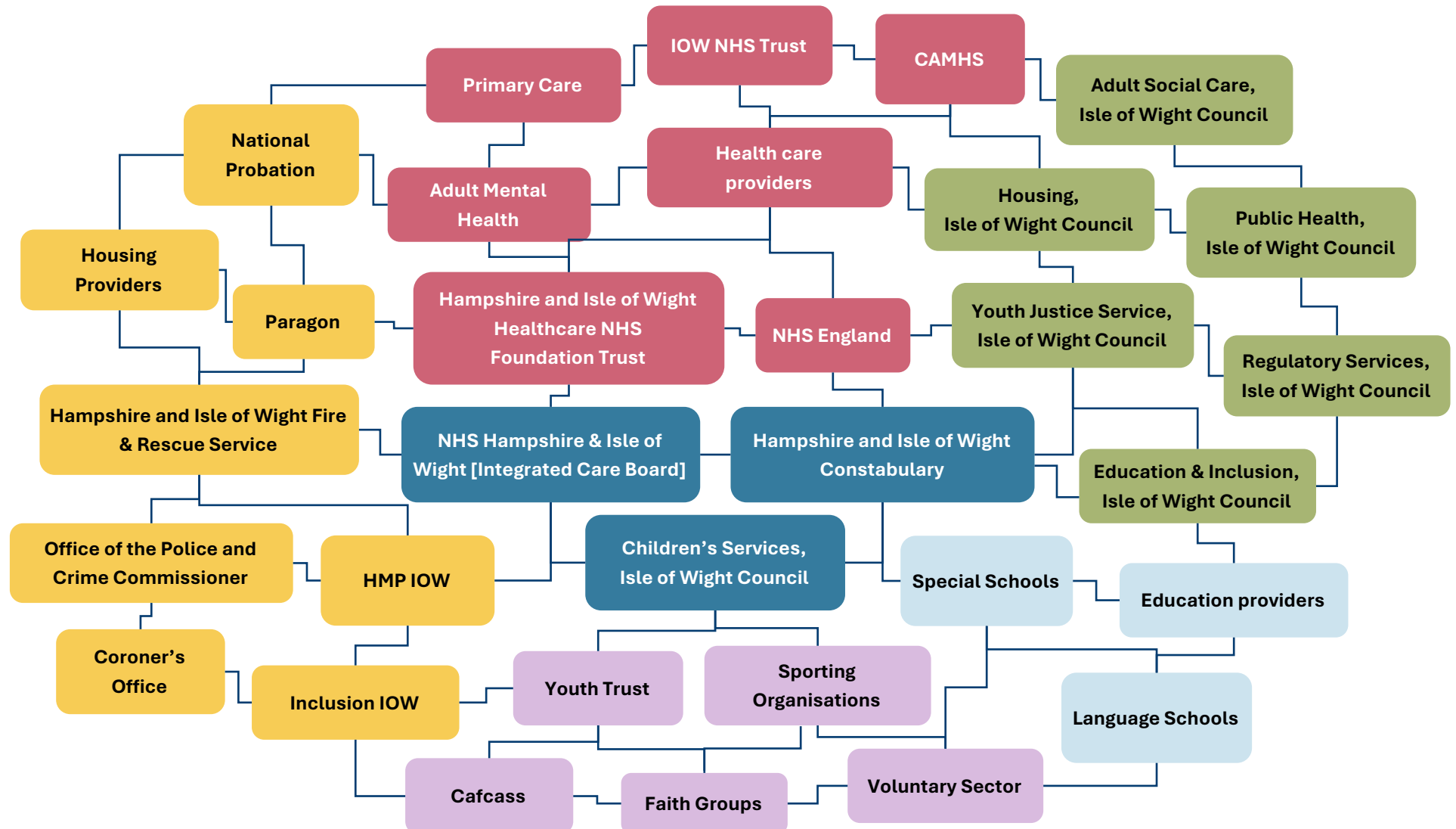
Ashley Whittaker, Director of Children's Services at the Isle of Wight Council is the agreed Chair of the Partnership. Scott MacKechnie is the Independent Scrutineer.

The IOWSCP is a strategic partnership body. Other than a small supporting Partnership Team [page 10] and the part-time presence of an Independent Scrutineer, it has no existence other than as a collective unit. This means agencies must ensure their organisations and leaders actively share in leadership and shaping of the Partnership, and in delivering its priorities.



The Safeguarding Partners set out which organisations and agencies are required to work with the Partnership. These organisations and agencies are referred to as **Relevant Agencies**. They should act in accordance with the arrangements. The Partnership's [Local Safeguarding Arrangements document](#) provides further information.

## RELEVANT AGENCIES:





# WHAT DOES THE PARTNERSHIP DO?

The Partnership provides the arrangements under which the Safeguarding Partners and Relevant Agencies work together:

- ★ **Coordination and Collaboration:** The Partnership brings together agencies to work collaboratively on safeguarding children.
- ★ **Policy Development:** The Partnership develops inter-agency policies and procedures for safeguarding and promoting the welfare of children. This includes setting thresholds for intervention and ensuring consistent practices across agencies.
- ★ **Learning, Development and Support:** The Partnership provides multi-agency learning and development opportunities for professionals working with children and families to ensure they are equipped with the knowledge and skills needed to identify and respond to safeguarding concerns.
- ★ **Quality Assurance:** The Partnership assesses the effectiveness of the help being provided to children and families, including early help services. This involves quality assurance practices such as joint audits of cases and identifying lessons to be learned.
- ★ **Serious Case Reviews:** The Partnership undertakes reviews of serious cases where children have been harmed or are at risk of harm. These reviews help to understand what went wrong and how similar incidents can be prevented in the future.
- ★ **Public Awareness:** The Partnership works to raise awareness about safeguarding issues within the community and ensure that everyone understands their role in protecting children.

The Partnership's Learning and Improvement Framework explains our approach to learning and improvement.

## Learning from data and the scrutiny programme

- a) Overseeing a robust multi-agency dataset
- b) Scrutiny programme including multi agency auditing

## Learning from experience

- a) Conducting Rapid Reviews, Local Child Safeguarding Practice Reviews, and Local Learning Events
- b) Identification of learning

## Improving services

- a) Embedding learning in practice
- b) Evaluation of learning

## Front-Line intelligence

- a) Front-line visits
- b) Training feedback
- c) Staff surveys

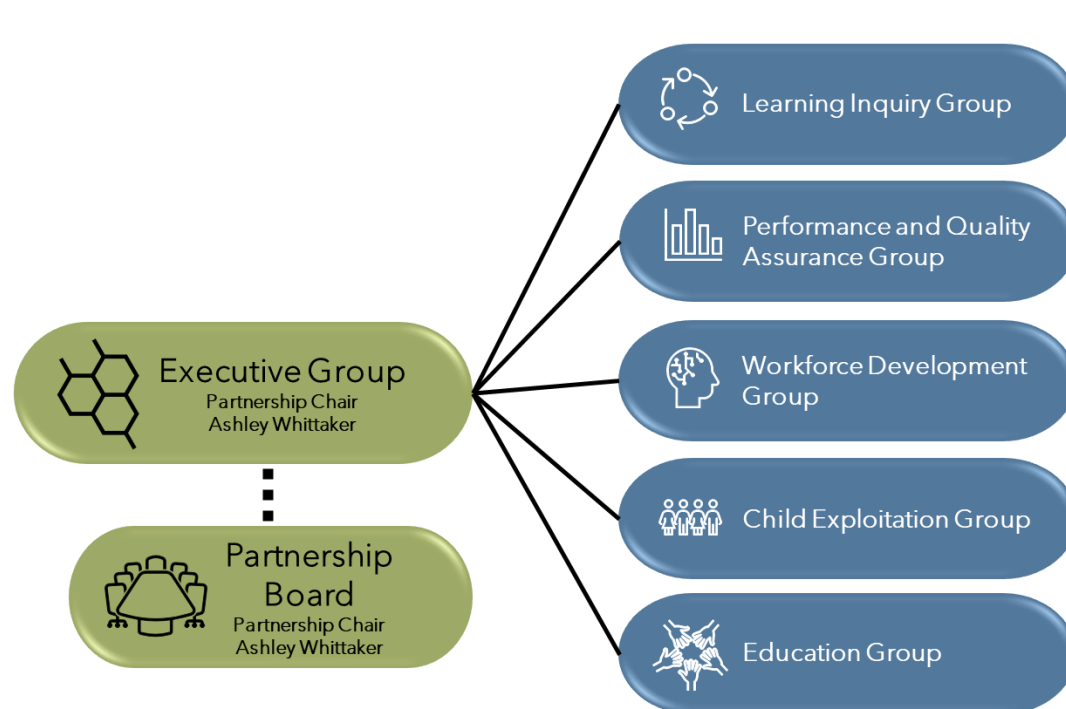
## Independent Scrutiny

- a) Scrutiny of the work of the Performance and Quality Assurance group
- b) Scrutiny of the work of the Learning Inquiry Group
- c) Scrutiny of the effectiveness of the multi-agency safeguarding arrangements, including ensuring the voice of children and families are considered

## External learning

- a) National research and Child Safeguarding Practice Reviews
- b) Strategic partnership feedback
- c) Inspection feedback
- d) Themed reports

# THE STRUCTURE OF THE PARTNERSHIP



Partnership Chair:  
Ashley Whittaker



Independent  
Scrutineer:  
Scott MacKechnie

## Functional Links

- Children's Trust Board
- Corporate Parenting Board
- Community Safety Partnership (CSP)
- Domestic Abuse Partnership Board (DAPB)
- Family Justice Board *\*is being re-established*
- Health and Wellbeing Board (HWB)
- IOW Safeguarding Adults Board (SAB)
- Missing, Exploited and Trafficked Risk Assessment Conference (METRAC)
- Multi-Agency Public Protection Arrangements (MAPPA)
- Multi-Agency Risk Assessment Conference (MARAC)
- Violence Reduction Unit (VRU)

- The Executive Group, which meets quarterly, comprises of leads from the three Safeguarding Partners and the IOWSCP subgroup chairs.
- Representatives from the three Safeguarding Partners and many of the Relevant Agencies are members of the IOWSCP Partnership Board, which meets quarterly.
- Subgroups meet quarterly and report to the Executive Group.
- The work of the IOWSCP is coordinated by the Partnership Team. This small team works closely with the Safeguarding Partners, Partnership Chair, Independent Scrutineer and Relevant Agencies to ensure the Partnership operates effectively and fulfils its statutory requirements, and is responsible for the day-to-day running of the Partnership.



## GROUP FUNCTIONS

The Terms of Reference for each group is available on the [Governance Documents](#) page of the IOWSCP website.

### EXECUTIVE GROUP

The Executive Group is the key decision-making body of the Partnership and comprises of those with lead responsibility from each of the Safeguarding Partners, and the chairs of the partnership subgroups. The group has overall responsibility for the safeguarding arrangements. The Executive Group is chaired by the Partnership Chair and meets quarterly.

### PARTNERSHIP BOARD

The Partnership Board includes representatives from many of the relevant agencies as well as the senior strategic managers of the three Safeguarding Partners. Attendees are expected to have a good understanding of safeguarding and be of a sufficiently senior level to represent their organisation or sector. The partnership meetings will be led by the Partnership Chair and meets quarterly.

### WORKFORCE DEVELOPMENT GROUP

The Workforce Development Group (WFD) is joint with IOW Safeguarding Adults Board (IOWSAB). It assesses needs, procure, organise, promote and ensure quality of learning and development activities. It creates an annual multi-agency learning and development plan that aligns with IOWSCP and IOWSAB business plans and incorporates recommendations from inspections, audits, and reviews. The WFD group is chaired by Learning and Development, IOW Council and meets twice a year with additional 'touch base' meetings as required.



## PERFORMANCE AND QUALITY ASSURANCE GROUP

The Performance and Quality Assurance (PQA) group coordinate quality assurance and evaluate how well partner agencies safeguard and promote children's welfare. This includes overseeing all audits and analysing performance data related to safeguarding on the Isle of Wight. The PQA Group is chaired by Children's Social Care, Isle of Wight Council and meets quarterly.

## LEARNING INQUIRY GROUP

The Learning Inquiry Group (LIG) works together with agencies, front line staff, and families to learn from cases and improve future safeguarding practices. This includes reviewing good practices. More details about [learning reviews](#) are available on our website. The LIG is chaired by Children's Social Care, Isle of Wight Council, and meets quarterly.

## CHILD EXPLOITATION GROUP

The Child Exploitation Group develops and oversees the Isle of Wight Exploitation Action Plan in response to the HIPS Exploitation Strategy. The group is chaired by Hampshire and Isle of Wight Constabulary and meets quarterly.

## EDUCATION GROUP

The Education Group communicates with the education sector about their safeguarding duties and local challenges, share learning from audits and reviews, develops and shares best practices, identifies issues, and make recommendations to the Board. The Education Group is chaired by Education, Access and Inclusion, Isle of Wight Council, and meets quarterly.





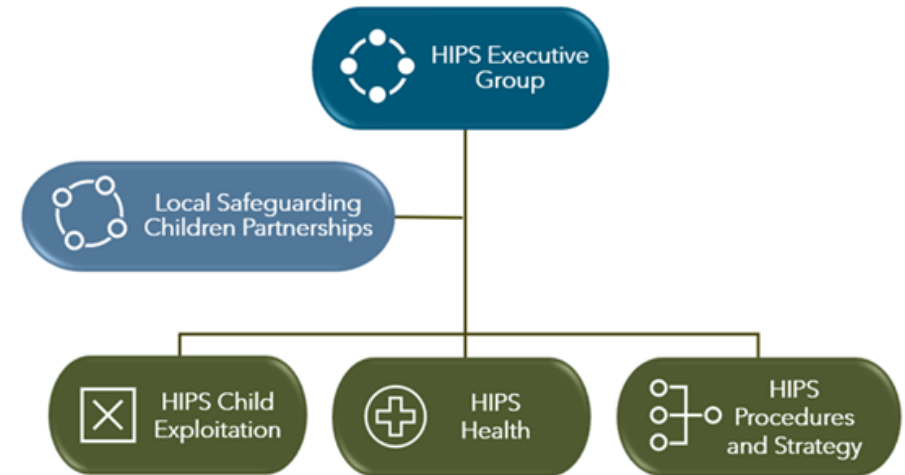
# GROUP MEMBERS

Organisation	Sector	Executive Group	Partnership Board	Learning Inquiry Group	Performance & Quality Assurance Group	Education Group	Child Exploitation Group	Workforce Development Group
Adult Social Care, Isle of Wight Council	IWC		X					X
Barnardo's	Voluntary				X		X	
CAMHS	Health			X	X		X	
<b>Children's Services, Isle of Wight Council</b>	IWC	X	X	X	X		X	X
Community Safety Partnership, Isle of Wight Council	IWC		X				X	X
Diocese of Portsmouth	Faith		X			X		
Domestic Abuse Partnership Board	IWC							X
Early Help, Isle of Wight Council	IWC							X
Early Years, Isle of Wight Council	IWC					X		
Early Years representative	Education					X		
Education, Inclusion & Access, Isle of Wight Council	IWC	X	X	X	X	X	X	
<b>Hampshire &amp; Isle of Wight Constabulary</b>	Police	X	X	X	X	X	X	X
Hampshire & Isle of Wight Fire & Rescue Service	Fire Service		X		X			X
Hampshire and IOW Healthcare NHS Foundation Trust	Health		X	X	X	X		X
<b>Hampshire &amp; Isle of Wight Integrated Care Board</b>	Health	X	X	X	X		X	X
Homestart	Voluntary							X
Housing, Isle of Wight Council	IWC				X			
Independent School representative	Education					X		
Isle of Wight College	Education					X		
Isle of Wight NHS Trust	Health		X	X	X		X	X
Isle of Wight Safeguarding Adults Board	IWC		X					X
Learning and Development, Isle of Wight Council	IWC	X	X					X
Local Authority Designated Officer, Isle of Wight Council	IWC					X		
National Probation Service	Probation		X	X	X			X
Primary Care	Health			x	X			
Public Health, Isle of Wight Council	IWC		X	X	X	X	X	X
Schools (primary, secondary, independent, special & further education)	Education		X			X		
UKSA	Voluntary					X		
Voluntary Sector Forum representative	Voluntary		X		X		X	
Youth Justice Service	IWC		X		X		X	

## WHAT IS HIPS?

The Isle of Wight Safeguarding Children Partnership works closely with the Hampshire, Portsmouth, and Southampton (HIPS) Safeguarding Children Partnerships to develop policies and procedures for practitioners across the whole of Hampshire and the Isle of Wight.

The policies and procedures are housed on the jointly owned [HIPS Procedures website](#).



## WHO PROVIDES SUPPORT FOR THE PARTNERSHIP?

The Partnership is supported and coordinated by the Partnership Team.

This small team supports and coordinates the Partnership's work, ensuring it runs smoothly and meets its legal obligations. The team work closely with Safeguarding Partners, the Independent Scrutineer, and Relevant Agencies.

The **Strategic Partnerships Manager** coordinates and manages the IOWSCP's work. They ensure practices are monitored, promotes partnership working across sectors, stays updated on government policies, and maintains strategic relationships with other safeguarding partnerships and networks.

The **Partnership Manager** coordinates administrative support and the work of the IOWSCP and its related groups. They collaborate with the Strategic Partnerships Manager to design and implement the Business Plan, and

monitors its priorities and actions. They also leads on scrutiny activities like case file audits, the 175/157 Education Audit, and Local Child Safeguarding Practice Reviews (LCSPR).

The Partnership is supported by two administrators:

### Sally Bloomfield

- Executive Group
- Partnership Board
- Learning Inquiry Group
- Child Exploitation Group
- Performance & Quality Assurance Group

### Amanda Findon

- Workforce Development Group
- Education group
- Learning and development and events



# ROLES & RESPONSIBILITIES

## SUBGROUP CHAIR

**The main role for the chairs of the IOWSCP Groups is to steer the members and co-opted members in achieving the agreed objectives set out in the business plan. The chair must therefore be given appropriate capacity by their organisation to achieve the roles set out below:**

- To ensure their attendance at all meetings and confirm any necessary alternative cover arrangements with the partnership team in advance of the meeting.
- To identify a deputy chair in partnership with group members.
- To produce the annual work plan with the partnership team and members of the group, ensuring that it contributes to the objectives of the IOWSCP Business Plan.
- To produce and review the Terms of Reference with the group members on an annual basis.
- To identify project leaders for individual tasks/activity.
- To steer the work of members and ensure assigned tasks are completed.
- To provide appropriate updates/reports on the work of the group to the IOWSCP Executive including the independent scrutineer
- To bring to the attention of the IOWSCP any issues (e.g. capacity, agency representation) that may impede the progress of the group.
- To provide robust scrutiny and oversight of the delivery of actions within respective work plans and to escalate any risks or concerns to the IOWSCP.
- To agree the agenda for each group meeting with the partnership team.
- To regularly review the membership of the group and ensure that it is both representative and effective.
- To ensure that the group promotes equality, diversity and inclusion through policies and practice.
- To play a part in raising awareness of safeguarding within their own organisation and the wider community on the IOW, disseminating information from the group to their agency.



## SUBGROUP MEMBER

**The main role of subgroup members is to contribute to the effective collaborative work of the group by sharing responsibility with other members for achieving the objectives set out in the business plan. Members will need to be given appropriate capacity by their organisation to achieve the role set out below:**

- To ensure their agency is appropriately represented at all meetings. Any member delegating attendance to another colleague, must ensure their deputy has the same decision-making authority. Any substitute should be of the same grade or one grade lower within their organisational structure.
- To read the papers on the agenda in advance of the meetings and have access to copies on the day.
- To assist the group chair in producing and achieving the annual work plan, ensuring consistency with the strategic and business objectives of the IOWSCP.
- To ensure the provision of accurate and timely performance and quality assurance reports to the group and to resolve barriers to obtaining key information requested by the group chair.
- To suggest relevant safeguarding agenda items to the chair and deliver items relevant to their own organisation or subject knowledge at meetings.
- To ensure that their agency contributes effectively to planned audits and improvement activities.
- To identify and engage non-members to assist with specific tasks/ activities.
- To play a part in raising awareness of safeguarding within their own organisation and the wider community on the IOW, disseminating information from the subgroup back to their agency.
- To identify barriers to delivery of IOWSCP activities / projects /audits and escalate to the chair for discussion and resolution.
- To ensure that the group promotes equality of opportunity through policies and practice.
- Effectively promote and implement IOWSCP and HIPS policies and procedures.
- To maintain up-to-date knowledge of safeguarding issues, undertaking personal training as required.





## BUSINESS PLAN

The IOWSCP Business Plan outlines the agreed priorities for the IOWSCP. The current Business Plan is available on the [Governance documents](#) page of the IOWSCP website.

The objectives within the Business Plan are undertaken by the subgroups or task and finish groups which may be either within the IOW or within HIPS.

## YEARLY REPORT

Each year the IOWSCP has a statutory responsibility to produce an Yearly Report which sets out what has been done in the year as a result of the Partnership arrangements and how effective these arrangements have been in safeguarding children on the Isle of Wight as laid out in [Working Together to Safeguard Children](#).

This report is published on our website and presented for scrutiny to several Trusts and Boards within the Isle of Wight Council, Hampshire and Isle of Wight Police, and Integrated Care Board.

The latest yearly report can be found on our [Governance documents](#) website page.

## LEARNING & DEVELOPMENT

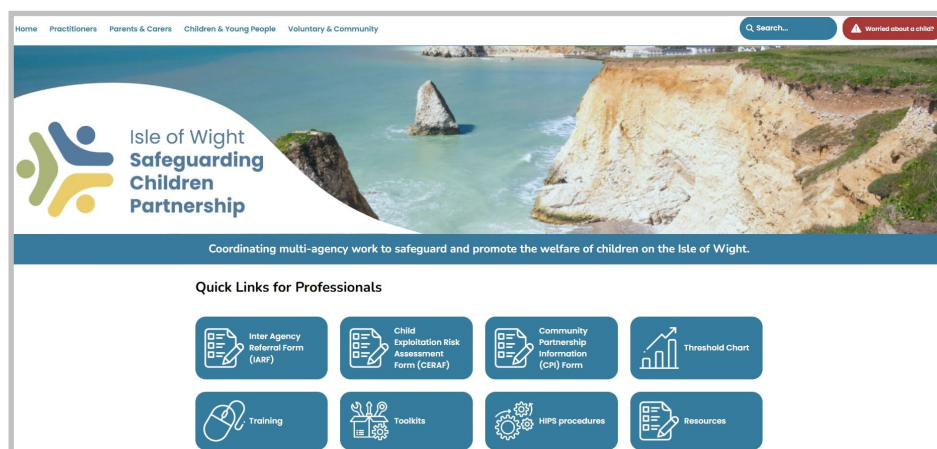
Each year, the Partnership creates and funds a learning and development programme for professionals working with Isle of Wight children and families to boost their confidence, knowledge, and skills in safeguarding children. Details of the training programme is on the Partnership [training webpage](#), with courses hosted on the Isle of Wight Council's Learning Hub.

We also promote other agencies' safeguarding learning and development and events for multi-agency professionals on our webpage.



# COMMUNICATIONS

**Partnership Website:** The Partnership website offers safeguarding guidance and information for professionals, parents/carers, children, and voluntary and community groups. It links to local and national resources, key documents, referral forms, toolkits, HIPS procedures, and local learning and development opportunities.



**HIPS Procedures Website:** The Isle of Wight Partnership works closely with the Hampshire, Portsmouth, and Southampton Safeguarding Children Partnerships to develop policies and procedures for practitioners across the whole of Hampshire and the Isle of Wight. The policies and procedures are housed on the jointly-owned HIPS Procedures website.

**Partnership Newsletter:** The quarterly newsletter details the work the Partnership has undertaken in the last quarter, upcoming events, learning and development and shares information on behalf of partner agencies.

**Education Newsletter:** The Education subgroup shares information, key decisions and developments to all education colleagues following each meeting.

**Toolkits and strategies:** In partnership with the Hampshire SCP or across

HIPS, strategies are created to address key safeguarding themes like child exploitation, child sexual abuse, neglect. Toolkits help professionals understand and respond to these issues, offering strategies, practical tools, research, case studies, and more.

**Practitioner briefings:** Practitioner briefings summarise key learnings, recommendations, and messages from case reviews, audits, and reports. They provide useful resources for professionals to share within their organisations, ensuring frontline practitioners benefit from the insights.

**Safeguarding Practice weeks:** Safeguarding Practice Weeks are held throughout the year providing an opportunity to raise awareness of important safeguarding themes and the resources available to support practitioners to address them.

**Safeguarding Theme Overview Packs (STOP):** STOP packs are tools for agencies to use internally to promote resources and good practice. Some are also designed for sharing with parents and carers.



## GLOSSARY AND USEFUL TERMS

CAMHS - Child and Adolescent Mental Health Service  
CERAF - Child Exploitation Risk Assessment Framework  
CET - Child Exploitation Team  
CP - Child Protection  
CPI - Community Protection Information form  
CRT- Children's Reception Team  
CSP - Community Safety Partnership  
DAPB - Domestic Abuse Partnership Board  
DSL - Designated Safeguarding Lead  
EBSA - Emotionally Based School Avoidance  
EHE - Electively Home Educated  
EYFS - Early Years Foundation Stage  
GP - General Practitioner  
HIOW - Hampshire and Isle of Wight  
HIPS - Hampshire, Isle of Wight, Portsmouth and Southampton Safeguarding Children Partnerships  
HIWFRS - Hampshire and Isle of Wight Fire & Rescue Service  
HRDA - High Risk Domestic Abuse  
HSCP - Hampshire Safeguarding Children Partnership  
HWB - Health and Wellbeing Board  
IARF - Inter Agency Referral Form  
ICB - Integrated Care Board  
ICON - Infant crying is normal, Comforting methods can help, It's okay to walk away, Never, ever shake a baby  
ICPC - Initial Child Protection Conference  
IOW - Isle of Wight  
IOWSCP - Isle of Wight Safeguarding Children Partnership  
JTAI - Joint Targeted Area Inspection

LADO - Local Area Designated Officer  
LCSPR - Local Child Safeguarding Practice Review  
LIG - Learning Inquiry Group  
LSCP - Local Safeguarding Children Partnership  
MAPPA - Multi-Agency Public Protection Arrangements  
MARAC - Multi-Agency Risk Assessment Conference  
MASA - Multi-Agency Safeguarding Arrangements  
MASH - Multi-Agency Safeguarding Hub  
MET - Missing, Exploited and Trafficked  
METRAC - Missing, Exploited, Trafficked Risk Assessment Conference  
MHST - Mental Health Support Teams  
NHS - National Health Service  
NPS - National Probation Service  
PEACH - Partnership for Education, Attainment and Children's Health  
PHSE - Personal, Social, Health and Economic Education  
PQA - Performance and Quality Assurance Group  
RAFT - Resilience Around Family Team  
RCPC - Review Child Protection Conference  
RSE - Relationships and Sex Education  
S11 - Section 11 Self-Assessment  
SAB - Safeguarding Adults Board  
STOP - Safeguarding Theme Overview Pack  
SEND - Special Educational Needs and Disabilities  
VCSE - Voluntary, Community and Social Enterprise  
VRP - Violence Reduction Partnership  
WFD - Workforce Development Subgroup  
YJS - Youth Justice Service  
YIAG - Youth Independent Advisory Group