

All organisations that work with children and families have a shared responsibility to safeguard children and to work together to do this. On the Island the Isle of Wight Council, Hampshire and Isle of Wight Integrated Care Board, and Hampshire and Isle of Wight Police work together as Safeguarding Partners to protect children on the Island in a formal arrangement called the:

Isle of Wight Safeguarding Children Partnership

Safeguarding children is everyone's responsibility and the Partnership's ambition is that everyone can recognise and respond to ensure that children, young people and their families are effectively safeguarded and supported.

Partnership Board meeting - Thursday 17th October 2024

Key headlines

The [Isle of Wight Domestic Abuse Strategy for 2024-2029](#) was shared with members by Simon Bryant, Director of Public Health. An action plan underpinning the strategy is being developed and Laura Johnson, domestic abuse principle will be asked to share this with members in the new year.



The impact of domestic abuse on children is well known and is a repeat feature within Partnership auditing. It remains a cross cutting theme within the Partnership's strategic objectives.

A new programme of [Joint Targeted Area Inspections](#) started in September will scrutinise how local services link up in response to domestic abuse. The joint targeted area inspections are carried out by Ofsted, the Care Quality Commission (CQC), HM Inspectorate of Constabulary and Fire & Rescue Services (HMICFRS) and HM Inspectorate of Probation (HMIP). The IOWSCP Partnership managers will be meeting with the Isle of Wight Domestic Abuse Partnership Board to consider this inspection framework together.

Cameron Baxter, Community Safety Operational Manager joined the meeting to speak to members about the current priorities of the **Community Safety Partnership**. Abandoned buildings are an area of focus as they are being frequented by young people. The Community Safety Partnership are using funding to secure buildings and highlight the dangers through the use of the media. They are working with schools to address these concerns directly with children.



No Limits have been commissioned to provide an Intensive Support Worker Project. They will be working with 4 selected secondary schools (Medina College, Carisbrooke College, Christ the King College, Ryde Academy) to target low school attendance and engagement. These schools have been selected using the [BeeWell](#) data, as well as Ofsted and attendance information.

Each school will be able to refer 15 children and young people for support over the course of a year. This project is funded by money provided by the IOW Quakers. No Limits staff will work with children and young people over the course of 8-12 sessions to provide 1:1 early intervention

The funding of an outreach worker from No Limits to provide a bespoke intervention service for young people has sadly come to an end.



Paul Francis, Community Development and Safeguarding Manager at **Hampshire and Isle of Wight Fire & Rescue Service** talked to members about the safeguarding structure within the fire service, the safeguarding they undertake through their daily work, and the interventions available to young people.

Partnership Board members discussed the positive impact these interventions, such as fire service cadet groups, have on young people and what is available on the Island. They discussed how statutory partners can assist voluntary and community groups to access funding available to them. Members considered how awareness of everything that is on offer could be enhanced. This echoed recent discussions from within the IOWSCP's Exploitation Subgroup. Kelly Diamond, Partnership Manager, will work with Cameron Baxter, Ellie Snookes of the Violence Reduction Unit and Laura Groves from Barnardo's to discuss further how information on interventions and funding can be collated and promoted to the multi-agency workforce to ensure children are receiving the right help at the right time.

The Cass Review

Doctor Emma Blake, Paediatric Consultant and Designated Doctor for Safeguarding presented to members the outcome of [The Independent Review of Gender Identity Services for Children and Young People \(The Cass Review\)](#) which was commissioned by NHS England and NHS Improvement in Autumn 2020. Emma will also be presenting at the HIPS Executive meeting and this will provide the opportunity for a local response across the HIPS area to be considered. The Isle of Wight Safeguarding Children Partnership will consider how this area is weaved into the Partnership's learning and development programme.



Board members explored the life experiences and complexities of children with gender dysmorphia and what data can indicate for this cohort of children. Cameron Baxter will meet with Emma to discuss the links with the Channel Panel and Prevent as there could be vulnerabilities around online exploitation and radicalisation. CAMHS and Paediatrics are now the only services able to refer to the national service. Holistic assessments and mental health issues are addressed first, and then if necessary, referrals submitted. The ICB has been asked to ensure all children on the waiting list have mental health, safeguarding and neurodiverse assessments. Private providers are banned from providing hormone blockers, including from abroad.

key headlines continued....

Children's Social Care continue work on 'Project Nim' which is the development of an Isle of Wight MASH. The planned start date of the new service is the 1st February, this will overlap with the service level agreement with Hampshire which finishes on the 31st March. This overlap will support a successful transition. Options are being considered around the out of hours service, including extending the service level agreement with Hampshire. Roles within the new MASH are being advertised here: [Careers in Children's Services](#).

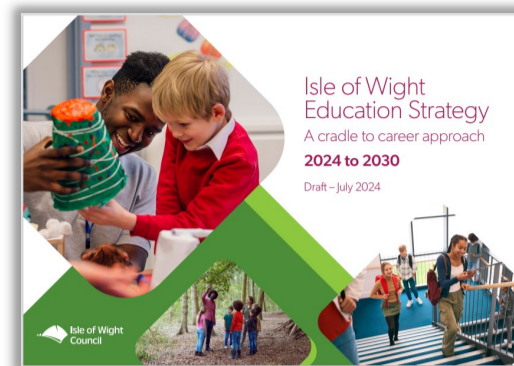
The new Children's Support and Protection Service went live on the 1st October. This sees an increase of teams from 4 to 6 and a second service manager for operations in post [Sara Carvalho]. This will increase capacity and leadership oversight.

Ashley also presented on behalf of Naomi Carter the [Isle of Wight Council's draft Education Strategy](#) which will go to the cabinet in February for approval. The strategy seeks to improve the education provision on the island for children and young people from birth to the age of 25. The school place planning strategy, which is under statutory consultation, is a part of the education strategy.

Members discussed the multifaceted reasons for why the island is at the bottom of key league tables for GCSE and A Level results. The important link between health, wellbeing and education was noted by members.

The Isle of Wight Safeguarding Children Partnership's education subgroup are looking at the strategic and operational voice of education within the partnership.

Simon Bryant, Director of Public Health informed members the strategic agreement with Hampshire County Council to provide public health leadership for the Island is due to end in August 2025. Both areas will be presenting reports to their respective Cabinets in November requesting formal approval to conclude the partnership in line with the current contract end date. It was acknowledged that the Island in a stronger position and the strategic partnership has achieved its goals.



As part of **Priority 4: Embedding and refining the work of the Partnership** from the [Partnerships Business Plan for 2024-25](#) the Partnership has decided to refresh it's logo. This brings it into line with the recently refreshed website and new design style for documents and reports. Do contact us at scp@iow.gov.uk if you need a file copy.

Private fostering awareness day: Wednesday 6th November 2024

A child who is cared for by someone who is not a close relative for more than 28 days is living in a [private fostering arrangement](#).

Coram BAAF [British Association for Adoption and Fostering] are marking the 6th November to raise awareness of private fostering arrangements.

6 November | 9am - 9.55am | Zoom | FREE breakfast briefing

They are offering a free online breakfast briefing to share key information about private fostering and the responsibilities of child-care professionals. As well as thinking about why professionals across children's services need to come together to raise awareness for this hidden group of vulnerable children.

If you are interested, please click the link to register: [Private Fostering Awareness Day 2024 CoramBAAF](#)

Why might a child be privately fostered?

A private fostering arrangement might happen for a number of reasons. This might include:

- ▶ A teenager living with the family of a boyfriend, girlfriend or a school friend because of a family breakdown
- ▶ A child living with a friend of their family because of a separation, divorce or arguments at home
- ▶ A child needing to be cared for because a parent has a long-term illness and is unable to look after their child
- ▶ A child being sent to this country by their parents who are living overseas;
- ▶ A child needing to be cared for because their parent(s) work away from home or work particularly long or unsociable hours
- ▶ A child staying more than 28 days as part of a foreign exchange trip/language school visit

Responsibilities of professionals and other agencies:

Any person or agency who believes a child is in a private fostering arrangement is expected to refer this to Children's Social Care. An agency is expected to inform the parent/ guardian / private foster carer that this is being done.

Notifications should be made by calling Children Social Care on 0300 300 0117

coramBAAF
adoption • fostering • kinship

How will I recognise if a child is privately fostered?

If you're aware of a child under 16 years of age (or 18 if they have a disability) who isn't residing with their parent(s), they could be in a private fostering arrangement if they've been away from home for more than 27 days and are living with an adult who isn't a close relative.

- Has the child mentioned that they are no longer living at home / living with someone else?
- Is the child accompanied to school by someone other than a parent/recognised carer?
- Has a patient turned up at the GP surgery with a new child/ series of different children?
- Is a child frequently absent from school?
- Is there anything unclear on files/records about the child's living arrangements?
- Is it clear who the child is living with, and what relation the person is to the child?
- Has the child come from overseas? Do you know the reason for the child's entrance to the UK?
- Is the child in the UK for the purpose of education?
- Is the child an unaccompanied asylum seeker?

corambaaf.org.uk

New Practitioner Resources

[Recognising and responding to the impact of cumulative harm \(PDF\)](#)

This resource highlights indicators of cumulative harm and describes the impacts and effects of an accumulation of adverse childhood experiences in a child's life, as well as other risks factors that may be present within and external to the child's family. The guidance provides signs and indicators and a framework for assessing the impact, which also supports multi agency assessment, response and professional discussion.

[Recognising and responding to child physical abuse \(PDF\)](#)

This resource provides the definition, signs and indicators of child physical abuse and outlines the multi-agency response.

Voluntary and community safeguarding checklist

The Partnership has created a safeguarding children's checklist to support community groups and voluntary sector organisations with their safeguarding practices. It is an opportunity to reflect and identify process and resources to support you to work towards safeguarding requirements. Voluntary and community organisations are not expected to have everything listed in place.

The Safeguarding Checklist should be worked through and areas for development identified. An action plan should then be created detailing what improvements will be made, who will be responsible and when they should be completed by. A short [Microsoft Form](#) should then be completed and submitted to the Partnership.

From the submitted safeguarding checklists, the partnership team will develop an annual briefing for the voluntary and community sector which highlights good practice and signposts to further support and resources to help enable voluntary and community organisations to further improve their response to safeguarding.

[Safeguarding Checklist Supporting Guidance \(Doc\)](#)

[Voluntary and community safeguarding checklist \(Microsoft Forms\)](#)

New FAQs section on the IOWSCP website

The Partnership Team have worked with colleagues in the Children's Reception Team [CRT] and Multi Agency Safeguarding Hub [MASH] to create a Frequently Asked Questions section about CRT and MASH on the [IOWSCP's Worried about a child webpage](#).

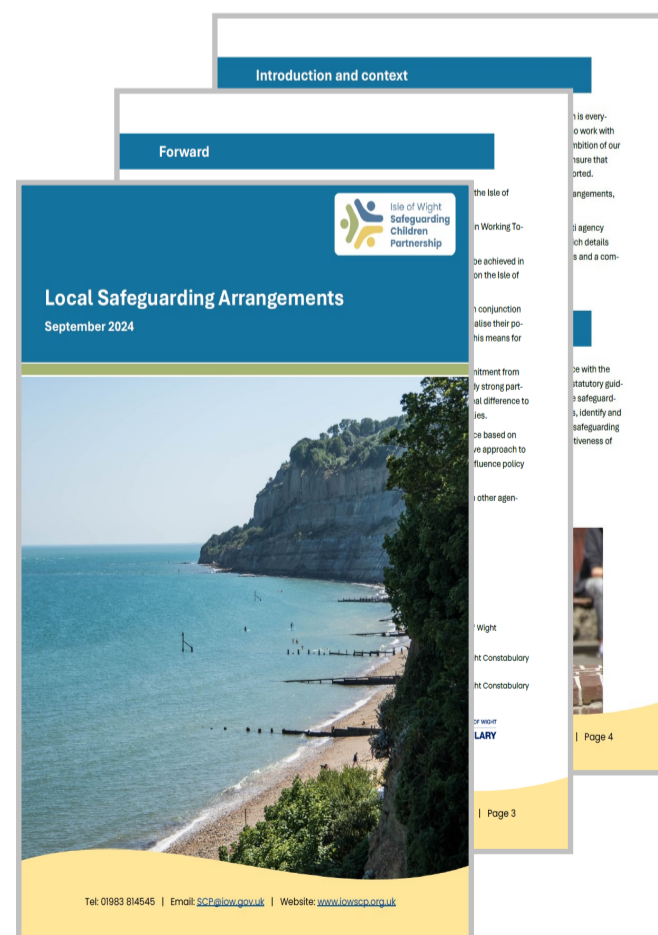
Local Safeguarding Arrangements

Protecting children from abuse, neglect and exploitation requires multi-agency join up and cooperation at all levels.

Every Local Authority, Integrated Care Board and Constabulary (known as the **'Safeguarding Partners'**) in England must have a multi-agency safeguarding arrangement in place. The purpose of the arrangement is to ensure that, at a local level, organisations and agencies are clear about how they will work together to safeguard children and promote their welfare.

In order to be transparent in how the safeguarding partners co-ordinate, deliver and fund services for children and families locally, they must publish these arrangements, in line with requirements outlined in [Working Together to Safeguard Children](#).

The Partnership have reviewed and updated their [Local Safeguarding Arrangements](#) following the publication of Working Together to Safeguarding Children 2023. These are available on our [Governance webpage](#).



Virtual School Extended Duties Surgery

Education information, advice, and guidance
Every Thursday (Term Time) 09.00-12.00

For professionals, carers, parents and guardians of children:

- ▶ with a social worker, children in need or child protection (ever in last 6 years)
- ▶ previously in care (now adopted, special guardian or child arrangement orders)
- ▶ kinship care

To book an appointment please [click and complete form](#).



Hampshire and Isle of Wight Healthcare NHS Foundation Trust

This new Trust went live on the 1st October and brings together Southern Health NHS Foundation Trust and Solent NHS Trust, as well as the community, mental health and learning disability services previously provided by Isle of Wight NHS Trust, and the Child and Adolescent Mental Health Services previously provided in Hampshire by Sussex Partnership NHS Foundation Trust.

[Hampshire and Isle of Wight Healthcare NHS Foundation Trust](#)



Domestic Abuse: Referral Pathway

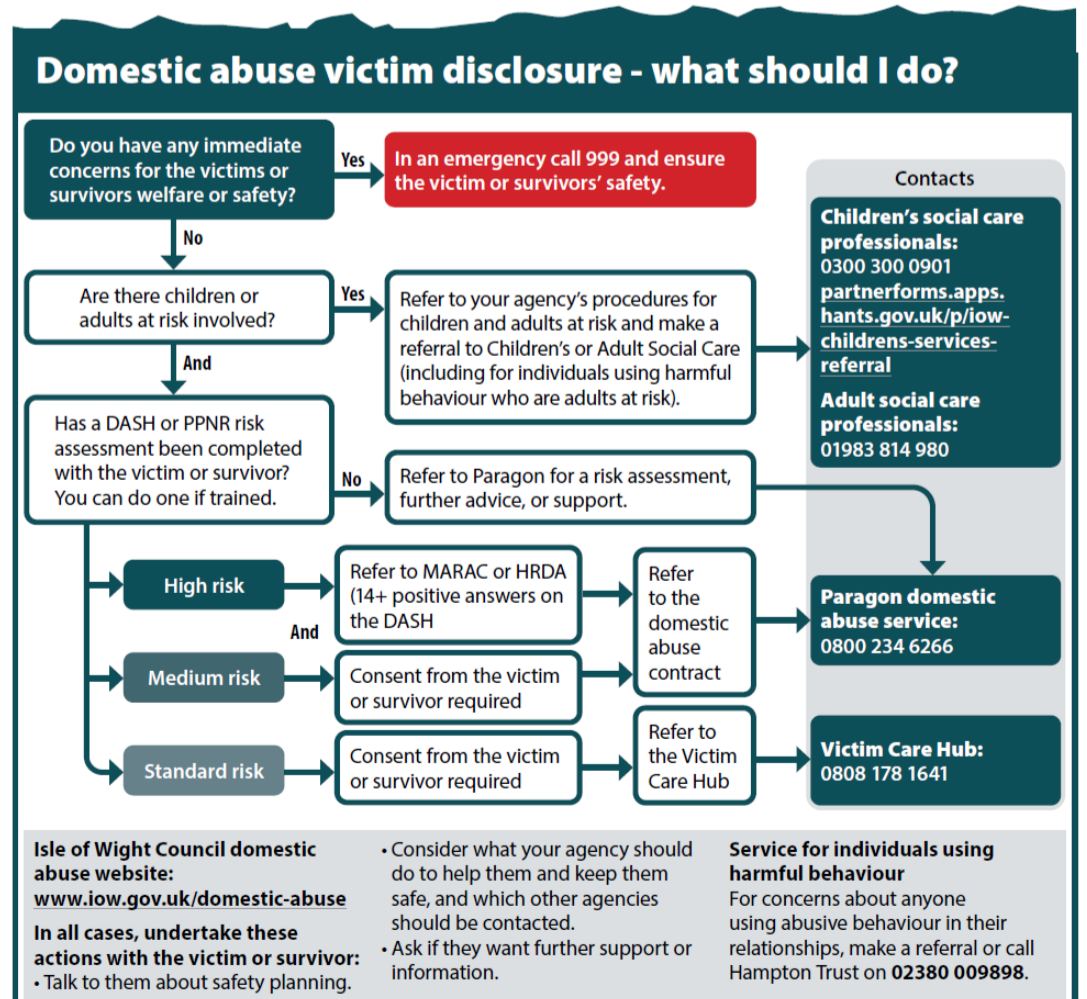
The [Isle of Wight domestic abuse referral pathway](#) provides a clear visual pathway for professionals on how to respond to a domestic abuse disclosure. It also details the support services available and a jargon buster to clarify terms.

Professionals are encouraged to share and utilise this referral pathway to support victims and survivors of domestic abuse.

This pathway, created with oversight from the police, health services, the victim care hub, adult and children's social care, commissioned providers, and the wider domestic abuse partnership, aims to inform about domestic abuse and provide clear steps for referrals.

This pathway ensures a coordinated response to domestic abuse, enhancing safety and support for all affected individuals.

Please share this with colleagues and partners to ensure everyone is informed and equipped to provide the necessary support.



The IOWSCP provides a free, multi-agency, learning and development programme for professionals who work with children and families on the Isle of Wight. The programme is funded by the Partnership.

These multi-agency learning opportunities bring professionals together to develop knowledge and skills and are designed to complement single-agency training. They include virtual events and courses, webinars, workshops and eLearning.

All organisations working with children and families are responsible for ensuring that their staff and volunteers are confident and competent in carrying out their responsibilities for safeguarding children. Staff should have access to appropriate development opportunities to ensure they have the knowledge and skills to identify and respond to abuse and neglect.

Our learning and development programme is hosted on the Isle of Wight Council's Learning Hub.

[Click here to book a place on a course](#)

Child Sexual Abuse

An introduction to harmful sexual behaviour	An introduction to child sexual abuse	Medical Assessments in suspected child sexual abuse	An introduction to Female Genital Mutilation (FGM)	Speaking to Children about child sexual abuse	Spotting the signs and indicators of child sexual abuse
13th November 2024, 9.30am - 11am	5th February 2025, 9.30am - 11am	8th January 2025, 9.30am - 12pm	12th March 2025, 9.30am - 11am	22nd January 2025, 7pm - 8pm 26th March 2025, 3.30pm - 4.30pm	4th December 2024, 7pm - 8pm 5th March 2025, 3.30pm - 4.30pm
Via Microsoft Teams	Via Microsoft Teams	Via Microsoft Teams	via Microsoft Teams	Via Microsoft Teams	Via Microsoft Teams
Contributes to meeting the learning outcomes at Level 3	Contributes to meeting the learning outcomes at Level 3	Contributes to meeting the learning outcomes at Level 3	Contributes to meeting the learning outcomes at Level 3	Information session	Information session

Child Exploitation

Missing, Exploited and Trafficked Children (MET)	An Introduction to the Child Exploitation Risk Assessment Framework (CERAF)	Child Exploitation - As a health professional, what do YOU need to know?
8th January 2025, 9.30am - 11am	5th February 2025, 1.30pm - 3pm	13th November 2024, 12pm - 1.30pm
Via Microsoft Teams	Via Microsoft Teams	Via Microsoft Teams
Level 3	Level 2	Inter collegiate training level 3

Child Abuse

An Introduction to child-on-child abuse	An introduction to child abuse linked to faith or belief	An Introduction to honour-based abuse, forced marriage and dowry	Understanding cumulative harm and preventing the normalisation of neglect	Understanding, identifying and responding to neglect	An Introduction to Fabricated or Induced Illnesses (FII)
22nd January 2025, 9.30am - 11am	26th March 2025, 9.30am - 11am	19th March 2025, 1.30pm - 3pm	4th December 2024, 12pm - 1.30pm 5th March 2025, 9.30am - 11am	5th March 2025, 7pm - 8.30pm	29th January 2025, 12pm - 1pm
Via Microsoft Teams	Via Microsoft Teams	Via Microsoft Teams	Via Microsoft Teams	Via Microsoft Teams	Via Microsoft Teams
Contributes to meeting the learning outcomes at Level 3	Level 3	Contributes to meeting the learning outcomes at Level 3	Contributes to meeting the learning outcomes at Level 3	Level 2	Contributes to meeting the learning outcomes at Level 3

Working With Families

Unidentified Adults	An introduction to a family approach	An Introduction to Professional Curiosity and Disguised Compliance	An Introduction to Having Honest Conversations
13th November 2024, 12pm-1pm	5th February 2025, 7pm - 8.30pm	12th February 2025, 9.30am - 11am	15th January 2025, 1.30pm - 3pm
Via Microsoft Teams	Via Microsoft Teams	Via Microsoft Teams	Via Microsoft Teams
Contributes to meeting the learning outcomes at Level 3	Contributes to meeting the learning outcomes at Level 3	Contributes to meeting the learning outcomes at Level 3	Level 3

Reporting / Referrals / Processes

An Introduction to Multi-Agency Public Protection Arrangements (MAPPA)	Children's Reception Team & Multi-Agency Safeguarding Hub [MASH]: Effective MASH referrals and follow up actions	Families who Move Across County Borders	Information Sharing Learning (Claire's Law and Sarah's Law)	The importance of Community Partnership Information (CPI) sharing
15th January 2025, 9.30am - 11am	13th February 2025, 9.30am - 11am	11th December 2024, 7pm-8pm	23rd January 2025, 9.30am-10.45am	12th November 2024, 9.30am - 10.15am
Via Microsoft Teams	Via Microsoft Teams	Via Microsoft Teams	Via Microsoft Teams	Via Microsoft Teams
Contributes to meeting the learning outcomes at Level 3	Contributes to meeting the learning outcomes at Level 2	Contributes to meeting the learning outcomes at Level 3	n/a Information session	Contributes to meeting the learning outcomes at Level 3

Safeguarding Infants

Safeguarding Infants	Domestic Abuse: Violence in pregnancy and impact on baby brain development
Access the eLearning on the IWC Learning Hub	eLearning on the IWC Learning Hub
E-Learning	E-Learning
Contributes to meeting the learning outcomes at Level 3	Contributes to meeting the learning outcomes at Level 3

Safeguarding Children and Young People

Safeguarding adolescents	An Introduction to Keeping Children Safe Online	An Introduction to Children who go Missing from Home/Care	Working Together to Safeguard Children and Young People*	Complex Multi-Agency Safeguarding Children **
20th November 2024, 1.30pm-3.30pm 26th March 2025, 6.30pm - 8.30pm	12th February 2025, 1.30pm-3pm	19th March 2025 12pm-1pm	19th November 2024 9.30am-4pm 5th February 2025 9.30am-4pm	29th and 30th January 2025 Both sessions 9.30am-4pm Two day course
Via Microsoft Teams	Via Microsoft Teams	Via Microsoft Teams	Via Zoom	Via Zoom
Level 3	Contributes to meeting the learning outcomes at Level 3	Level 2	Level 3	Level 4

*Applicants must have completed Level 2 training and be working confidently at this level to be suitable

**Applicants must have completed Level 3 training and be working confidently at this level to be suitable for Level 4 training

Safeguarding Children and Young People

An introduction to the impact of domestic abuse on children and young people

27th November 2024,
1.30pm - 3pm
19th March 2025,
9.30am-11am

Via Microsoft Teams

Contributes to meeting the learning outcomes at Level 3.

Responding well to Disclosures of Domestic Abuse

11th December 2024,
12pm - 1pm
19th March 2025,
7pm - 8pm

Via Microsoft Teams

Contributes to meeting the learning outcomes at Level 3.

Safeguarding Children with Disabilities

Learning from reviews - Safeguarding Children with Complex Health Needs

20th November 2024,
12pm - 1pm

Via Microsoft Teams

Contributes to meeting the learning outcomes at Level 3

Other agency training [[visit our website to access these course](#)]

DARE toolkit

Dragonfly Project

Introduction to the Hampshire and Isle of Wight Approach

Multi-Agency Forensic CAMHS and Harmful Sexual Behaviours Forum Workshop

Designated Safeguarding Lead [DSL] Training

Isle of Wight Council Training Courses

PREVENT Duty - Learn how to support people vulnerable to radicalisation

Early Help Assessments and Information Sharing

MARM [Multi-Agency Risk Management]

Reducing Parental Conflict

Hidden Sentence Training

How Do I? training

Managing Safeguarding Responsibilities (Non-education settings)

Suicide Prevention Training

Targeted Early Help

Suggested courses for the voluntary and community sector:

- « Understanding, Identifying and Responding to Neglect
- « An Introduction to Child Sexual Abuse
- « The Importance of Community Partnership Information (CPI) Sharing
- « An Introduction to the Impact of Domestic Abuse on Children and Young People
- « Safeguarding Disabled Children (Including Children with a Learning Disability)
- « Unidentified Adults
- « An Introduction to Keeping Children Safe Online
- « Safeguarding Adolescents in Hampshire and on the IOW
- « Missing, Exploited and Trafficked Children
- « An Introduction to the Child Exploitation Risk Assessment Framework (CERAF)