

All organisations that work with children and families have a shared responsibility to safeguard children and to work together to do this.

On the Island the Isle of Wight Council, NHS Hampshire and Isle of Wight [Integrated Care Board], and Hampshire and Isle of Wight Police work together as Safeguarding Partners to protect children on the Island in a formal arrangement called the **Isle of Wight Safeguarding Children Partnership**.

Safeguarding children is everyone's responsibility and the Partnership's ambition is that everyone can recognise and respond to ensure that children, young people and their families are effectively safeguarded and supported.

Winter Partnership Board meeting - Key headlines

In August, the Partnership undertook a **Partner Review of the Isle of Wight Multi-Agency Safeguarding Hub (MASH)**. The review considered co-location, information sharing, professional conversations, relationship building, multi-agency governance, collective decision-making, timeliness, operational arrangements, and the effectiveness of weekly quality assurance. It also gathered practitioners' perspectives across all agencies and observed children's journeys. The review found strong multi-agency commitment to delivering a safe and effective service, highlighting many areas of good practice alongside opportunities for further development. Several recommendations were made, many of which are already underway, with continued monitoring through the Performance and Quality Assurance subgroup. Board Partners commented positively on the MASH's development, noting improved data trends. Education colleagues highlighted the value of being able to call MASH to discuss concerns and strong Early Help support. The service is preparing its first full year of data by the end of March. Work also continues to strengthen Early Help and review future arrangements for Out of Hours services.

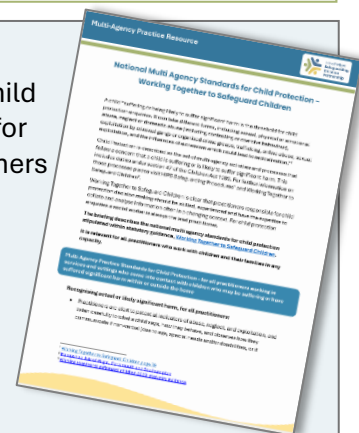
The **Q1 and Q2 Performance and Quality Assurance data report** was presented. Several data areas, such as domestic abuse referrals, primary school suspensions, health outcomes (including dental care and immunisations) for children cared for by the local authority and child protection categories, will be explored further to better understand local patterns.

Work on the **Families First Partnership Programme** continues locally, despite a national pause linked to proposed changes to the Children and Young People's Wellbeing Bill. Island colleagues recently attended the South East regional meeting to review progress and hear national updates. Locally, the programme remains in its early development phase. Governance will sit with the IOWSCP Executive Group, and a programme board will be established to oversee progress. The island also received a visit from Hertfordshire colleagues to present the Family Safeguarding Model. The programme's focus is on early intervention, prevention, and helping children remain safely at home. Work is being coordinated across Hampshire, Isle of Wight, Portsmouth and Southampton (HIPS areas) to ensure consistent updates. Partners are exploring how the programme can be embedded into their work.

Multi-Agency Child Protection Standards - Practitioner Resource

Multi-Agency Child Protection Standards aim to ensure strong, consistent, and effective child protection practice across England, setting out the actions, behaviours, and expectations for everyone involved in protecting children. We've created this resource to support practitioners with this.

Please explore the standards with peers, supervisor/line manager and within teams. Use them within supervision to support critical thinking. Review your knowledge and consider what professional development may support you in achieving or maintaining the relevant standards. Reflect on your practice against the standards and consider areas you wish to develop or strengthen. <https://www.iowscp.org.uk/resource-library>



Working Together to Safeguard Children 2026:

Working Together to Safeguard Children 2026 has just been published and can be found here: [Working together to safeguard children 2026: statutory guidance](#). This is a summary of the changes: [Summary of changes - GOV.UK](#)

Com Networks: Alert for Safeguarding Children Partnerships

This alert contains material which some may find upsetting

This alert is to inform, raise awareness and assist safeguarding partnerships and practitioners in recognising, and responding to, the emerging threat of Com Networks.

All agencies are likely to come across potential indicators of harm. Awareness raising amongst education and health colleagues as well as responding agencies is key to preventing com network activity and early identification.

Com Networks are active on virtually all social media and online gaming platforms but primarily operate on Discord and Telegram which are popular communication platforms.

Community 'Com' Networks are online groups involved in child sexual abuse, cybercrime and offline violence. These networks are dynamic and often overlap across the threats, although not every case will involve all three. The majority of those involved (victims and perpetrators) are predominantly but not always children under the age of 18.



[View the Com Network safeguarding alert here](#)

IOWSCP Practitioner Briefing – Learning from serious safeguarding

One of the functions of the Partnership is to review serious child safeguarding cases to identify improvements that can help safeguard and promote the welfare of children.

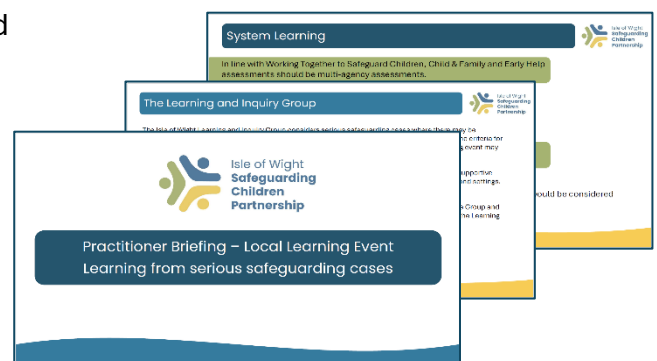
These reviews aim to reduce the risk of similar incidents occurring in the future. They are not designed to attribute blame to individuals, organisations, or agencies.

A learning briefing has been developed to share key learning across the multi-agency workforce identified from recent serious safeguarding cases.

Please take a moment to read and reflect on the information.

This resource has been designed to provide agencies and practitioners with a supportive and flexible resource that they can use within their own organisations and settings to strengthen practice. The briefing also contains useful links and resources.

Please share it widely with colleagues.



Brand-New Care Leavers Local Offer website

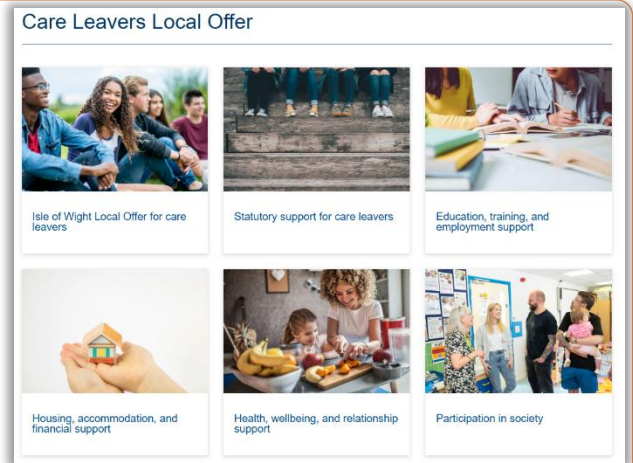
The Isle of Wight Council have launched a brand-new [Care Leavers Local Offer website](#), and refreshed the [Enhanced Local Offer for Care Leavers guide](#).

If you work with care experienced young people, please take a look and share the link widely so they can access everything they are entitled to.

These updates have been designed to make information clearer, easier to navigate, and more accessible for the young people they support. They reflect the extensive work of the Next Steps team and their ongoing commitment as corporate parents.

The online Local Offer sets out the full range of support available to care leavers, including:

- Support from the Next Steps Team:** Young people can read about how their Personal Advisor supports them from age 18 onwards, helping with pathway planning, independence skills, benefits, housing applications and more.
- Education, Training & Employment:** Offering help with travel costs, apprenticeships, volunteering, benefits support, equipment for training or work, and university support including a £2,000 higher education bursary, holiday accommodation, and help accessing scholarships.
- Housing Support:** The Local Offer outlines everything from support into social or private housing up to the £3,000 Moving on Grant, decorating allowance, help with DIY, and covering the first year of TV licence and home insurance.
- Financial Support:** Includes clothing for work, driving lesson contributions, council tax exemption until age 25, birthday and celebration payments, and entitlements for care leavers in custody.
- Health & Wellbeing:** Support with mental health, accessing advocates, reconnecting with family, registering with a GP or dentist, counselling referrals, and free access to council gyms and leisure centres.
- Support for Young Parents:** Help with baby essentials, Christmas gifts, benefit applications, attending appointments, and connecting to Family Hubs.
- Support for Care Leavers Aged 21–25 (and beyond):** Young people over 21 can still access housing support, training and employment advice, council tax exemption, and a personalised plan if needed. Support continues beyond 25 with lifelong access to English and maths learning.
- Participation in Society:** Opportunities to get involved in volunteering, awards, apprenticeships, meeting councillors, and contributing to corporate parenting boards and focus groups.

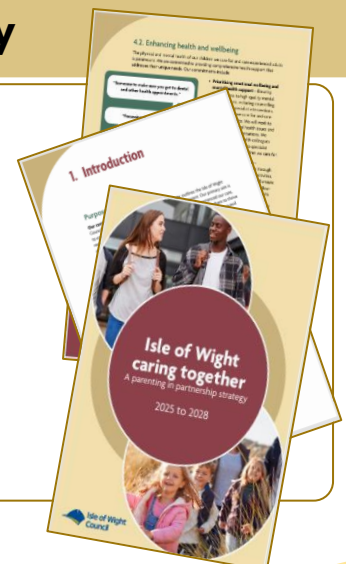


Caring together, Parenting in Partnership Strategy

[Caring together, Parenting in Partnership Strategy](#) [Corporate Parenting Board] outlines the Isle of Wight Council's commitment to its role as a corporate parent. The strategy serves as a guiding document for all council departments, elected members, and partners (statutory and voluntary), ensuring a unified and consistent approach to fulfilling our corporate parenting responsibilities.

The importance of identity, belonging and emotional wellbeing of children is acknowledged by the Partnership.

Colleagues are encouraged to share the strategy within their teams to strengthen understanding of collective parenting responsibilities.



Local Authority Designated Officer training

The IOW Council is offering two NEW courses from the Local Authority Designated Officer (LADO)

Course: [An introduction to the Local Authority Designated Officer \(LADO\)](#)

This training will provide a brief introduction to the LADO role, allegation criteria and process. This course is for anyone that works or volunteers with children.

- ➔ Wednesday 13th May, 9.30-10.30am **via Teams**
- ➔ Wednesday 30th September, 9.30-10.30am **via Teams**

[Click here for more information to book your place](#)

Course: [LADO: For those that manage allegations](#)

This training will give leaders confidence in managing allegation of harm against adults who work with children. We will review the relevant legislation, policy and guidance that underpins this process and how this translates into action for individual settings. We will also explore how safer culture can act as a prevention for harm, and how providers can build safer cultures in their own settings.

This course is for anyone who is the responsible for managing and responding to allegations of harm in their provision/organisation.

- ➔ Monday 13th April, 10am-1pm **at Westridge Learning Centre**
- ➔ Wednesday 14th October, 10am-1pm **at Westridge Learning Centre**

[Click here for more information to book your place](#)

Trainer: Becky Paradise, Isle of Wight Local Authority Designated Officer

Fire Safety in the Home Awareness training session

Professionals are invited to participate in a **free 1-hour** Fire Safety in the Home Awareness training session. This training is designed to enhance your knowledge of fire prevention and safety practices within the home and understand what a Home Fire Safety Visit (previously known as a Safe & Well visit) entails, empowering you to better support the people and communities you work with.

Why Attend?

- Gain essential fire safety knowledge tailored to home environments and individual vulnerabilities
- Learn practical strategies to reduce fire risks and promote safer living conditions
- Enhance your ability to integrate fire safety advice within your professional area
- Learn how to refer clients/patients/service users to HIWFRS for a person-centred Home Fire Safety visit

By taking part, you'll strengthen your own practice and help prevent fire incidents through a partnership approach- saving lives and keeping homes and our communities safer.

Fire Safety in the Home Awareness Training for Professionals [Online events]

- [30th April 2026, at 9.30 BST Eventbrite link](#)
- [12th May 2026, at 9.30 BST Eventbrite link](#)

***Please note – if you have more than 20 people in your team they are happy to come and deliver in-person training. Please email preventiondevelopment@hantsfire.gov.uk to book this in.**



IOW Safeguarding Children Partnership Strategic Priorities 2026–29

- ▶ **Educational Engagement of Vulnerable Children** (inc. children not attending school)
- ▶ **Online Harm**
- ▶ **Families First Partnership Programme**
- ▶ **Safeguarding Themes:**
 - Year 1: Child sexual abuse and domestic abuse
 - Year 2/3: Familial factors such as substance misuse, intergenerational impact, blended families

Priorities are shaped in the context of:

- Neglect and cumulative harm remaining particularly prevalent
- Continuing need to strengthen educational engagement as a key protective factor
- Significant changes ahead, such as the implementation of the Families First Partnership Programme and updates to Working Together to Safeguard Children
- Maintaining our strong partnership base
- National Reviews, e.g.:

[I wanted them all to notice](#)

[National Audit of Group-based Child Sexual Exploitation and Abuse](#)

[Safeguarding Children with disabilities and complex health needs in residential settings](#)

[“It’s Silent”: Race, racism and safeguarding children](#)

Cross cutting themes in strategic

| | | | |
|---|---|--|--|
| Voice of the child and family | “Cost of living crisis” and the impact of this | Equality, diversity and inclusion considerations | Parent-oriented issues i.e. domestic abuse and problematic substance use |
| Emotional wellbeing and mental health | Capability and capacity of the workforce | Online harm and extra familial harm | Engagement with services, getting it right first time |
| Children with additional needs/disabilities | Safeguarding within the educational experience of vulnerable children | Cumulative impact of harm | Analysing data to identify families needing support |

Surrey Safeguarding Children Partnership conducted a [Local Child Safeguarding Practice Review \(LCSPR\)](#) in relation to the tragic death of ten-year-old Sara Sharif. [\[Sara Review: Executive-Summary Nov25\].](#)



The report brings together the key learning from the review, outlining what was known about Sara’s life and the circumstances that ultimately led to her death. It highlights important lessons for all agencies involved in safeguarding children and provides a fuller account in the full review for those who wish to understand the findings in more detail.

The Isle of Wight Partnership will reflect on the key areas of learning.

The Partnership has previously produced multi-agency practitioner briefings on:

- [Elective Home Education \(EHE\) Multi-agency roles and responsibilities](#)
- [Recognising and responding to the impact of cumulative harm](#)
- There is also a [Child Safeguarding Practice Review Panel briefing on elective home education](#)

Every Voice Matters: A Whole-Family Lens on Domestic Abuse



In February, partners from across our services came together for a full-day Domestic Abuse Conference exploring how coercive and controlling behaviour affects the whole family, and how a family-centred approach can lead to more effective safeguarding, intervention, and recovery.

We were delighted to welcome guest speakers **Dr Emma Katz** and **Katie Bielec**, leading experts in coercive control, stalking, and survivor-led approaches to domestic abuse. Their insight helped deepen our understanding of the complex dynamics families face and highlighted practical ways professionals can strengthen support pathways.

The conference brought together **150 attendees from 50 different agencies across the island**, reflecting the strong multi-agency commitment to improving outcomes for families experiencing domestic abuse. It provided a valuable opportunity for frontline professionals to connect, share learning, and enhance our collective response.

Thank you to everyone who attended and contributed to a powerful and collaborative day focused on strengthening safeguarding and support for families.



Domestic abuse
training

Domestic abuse STOP
Pack for professionals

Domestic abuse referral
pathway for children and
young people

- [Domestic abuse resources for professionals - Isle of Wight](#)
- [Information and resources - Isle of Wight](#) – including a link to the adult domestic abuse referral pathway
- [Domestic Abuse for Practitioners: Isle of Wight Safeguarding Children Partnership](#) – including a link to the children and young person's referral pathway
- [Resources Library - Isle of Wight Safeguarding Adults Board \(IOWSAB\) - resources for professionals](#) – including 4LSAB domestic abuse guidance

The IOWSCP provides a free learning and development programme for all practitioners who work with children and families on the Isle of Wight. The programme is funded by the Partnership.

These multi-agency learning opportunities bring professionals together from different agencies to develop knowledge and skills and are designed to complement single-agency training. They include virtual events and courses, webinars, workshops and eLearning.

Our learning and development programme is hosted on the Isle of Wight Council's Learning Hub.

Child Abuse/ Neglect

- Introduction courses to:
 - child-on-child abuse
 - child abuse linked to faith and belief
 - honour-based abuse, forced marriage and dowry
 - Fabricated or Induced Illnesses
- Understanding, identifying and responding to neglect
- Understanding cumulative harm and preventing the normalisation of neglect
- Neglect Toolkit Tour *

Child Exploitation

- Child Exploitation Toolkit Tour
- Missing, Exploited and Trafficked Children
- An Introduction to the Child Exploitation Risk Assessment Framework (CERAF)
- Introduction courses to:
 - Serious Violence Duty *
 - the Trafficking and National Referral Mechanism
- Child Exploitation – As a health professional, what do you need to know?
- Safeguarding against child financial exploitation
- Serious Violence Duty toolkit tour *
- Modern Slavery Toolkit tour *

Child Sexual Abuse

- Introduction courses to:
 - child sexual abuse
 - harmful sexual behaviour
 - Female Genital Mutilation (FGM)
- Child Sexual Abuse, Sexual Exploitation and Group Based Harm
- Spotting the signs and indicators of child sexual abuse
- Speaking to children about child sexual abuse
- Brook Sexual Behaviours Traffic Light Tool training
- Putting the Child Sexual Abuse Response Pathway into practice
- Medical Assessments in suspected child sexual abuse eLearning
- Child Sexual Abuse Toolkit Tour

Reporting, Referrals, Processes

- Child Sexual Abuse, Sexual Exploitation and Group Based Harm
- "Right Help, Right Time" - IOW Multi Agency Safeguarding Hub (MASH) workshop for multi-agency professionals
- Information sharing advice for safeguarding practitioners eLearning
- The importance of Community Partnership Information (CPI) sharing
- Information sharing learning (Clare's Law and Sarah's Law)
- Families who move across county borders
- An introduction to Multi-Agency Public Protection Arrangements (MAPPA)

*New courses for 2026/27

Safeguarding Children and Young People

- Safeguarding Adolescents in Hampshire and IOW
- Introduction courses to:
 - safeguarding children with excessive weight
 - keeping children safe online
 - children who go missing from home/care
- Contextual safeguarding - Beyond the family dynamic
- Cyber Choices
- Working Together to Safeguarding Children, Level 3
- Complex Multi-Agency Safeguarding Children, Level 4
- Children we care for and care leavers eLearning
- Safeguarding Infants eLearning
- Safeguarding Disabled Children (inc. those with a learning disability)
- Community and voluntary organisations Toolkit tour
- Safeguarding Infants Toolkit tour *

Working With Families

- An Introduction to Adopting a Family Approach
- Unidentified Adults
- Unpacking Disguised Compliance – The Importance of Professional Curiosity
- An introduction to having honest conversations
- Practical Session: Day in the Life Tool *
- Unidentified Adults Toolkit Tour *
- Adopting a Family Approach Toolkit Tour *

Domestic Abuse

- Children as victims in their own right: Understanding the impact of domestic abuse (including those with special educational needs and disabilities)
- Courses on recognising and responding to:
 - child and adolescent to parent and carer abuse and harm
 - coercive controlling behaviour
 - domestic abuse in LGBTQ+ relationships
 - male victims-survivors of domestic abuse
 - people of diverse ethnic and cultural backgrounds who are victims/survivors of domestic abuse
 - disclosures of domestic abuse
 - Post separation abuse including using the courts and child contact arrangements
- Introduction courses to:
 - stalking
 - recognising and responding to perpetrators of domestic abuse
 - the homicide timeline
- The Hidden Costs of Control: The Impact of Economic Abuse on Families
- Information Sharing Learning (Clare's Law & Sarah's Law)
- Understanding and assessing risk and supporting safety planning
- From Concern to Action: Responding to Abusive or Unhealthy Behaviours in Young People's Intimate Relationships
- Untangling the Web: Power, Control, and Counter-Allegations in Domestic Abuse
- Domestic abuse: Violence in pregnancy and impact on baby brain development eLearning

*New courses for 2026/27

Partnership Toolkits

These toolkits have been developed by practitioners for practitioners to help you identify and respond to various safeguarding themes. They contain guides, resources, case studies, strategies and training opportunities.

<https://www.iowscp.org.uk/toolkits>

[Child Sexual Abuse](#)

[Neglect](#)

[Safeguarding Adolescents](#)

[Adopting A Family Approach](#)

[Safeguarding Infants](#) [Child Exploitation](#)

[Understanding Unidentified Adults](#)

[Child-On-Child Abuse](#)

[Serious Violence](#)

[Vountary & Community Organisations](#)

NEW Toolkit Tours

New virtual tours of IOWSCP toolkits are available this year. These 45-minute tours are intended to support professionals in becoming more familiar with the information, tools and resources available within the toolkits:

- [Child Exploitation toolkit tour](#)
- [Neglect toolkit tour](#)
- [Safeguarding Adolescents toolkit tour](#)
- [Serious Violence toolkit tour](#)
- [Modern Slavery toolkit tour](#)
- [Child Sexual Abuse Toolkit tour](#)
- [Unidentified Adults Toolkit tour](#)
- [Adopting a Family Approach Toolkit tour](#)
- [Community and voluntary organisations toolkit tour](#)
- [Safeguarding Infants Toolkit Tour](#)
- [Day in the Life Tool Practical Session](#)

Practitioner briefings & practice resources

Our practitioner briefings and practice materials help you learn from reviews, audits and other reports. They are designed to be shared within your own organisations, so that learning can be cascaded to frontline practitioners

- [7 Golden Rules for Information Sharing](#)
- [Child Exploitation Risk Assessment Framework \(CERAF\) quick guide](#)
- [Domestic abuse referral pathway for children and young people](#)
- [The experience of children and families who are re-referred to IOW Children's Social Care](#)
- [Interactive neglect threshold chart](#)
- [Multi Agency Compliance and Engagement in Child Protection Processes](#)
- [Multi-agency response to child sexual abuse](#)
- [Multi-agency roles and responsibilities around Elective Home Education](#)
- [Practice Principles for Chronology Templates](#)
- [Priority, Pace and Purpose – Multi-agency response to children who need early help](#)
- [Professionals meeting guidance on when to call a meeting](#)
- [Recognising and responding to child physical abuse](#)
- [Recognising and responding to the impact of cumulative harm](#)
- [The Unborn/Newborn Baby Safeguarding Protocol](#)
- [Threshold Pathway Guidance](#)
- [Working Together to Resolve Professional Differences](#)
- [Working together to resolve professional differences in relation to child protection conferences.](#)

[www.iowscp.org.uk/
practitioners-
briefings](https://www.iowscp.org.uk/practitioners-briefings)

This newsletter is designed to strengthen awareness, support practice, and ensure that staff across all agencies are equipped with the right tools and guidance to safeguard children and young people.



Please share this newsletter and the resources within it with colleagues in your agency and encourage staff to Review the materials carefully • Reflect on how they can be applied in practice • Use them to support ongoing professional development and safeguarding awareness.