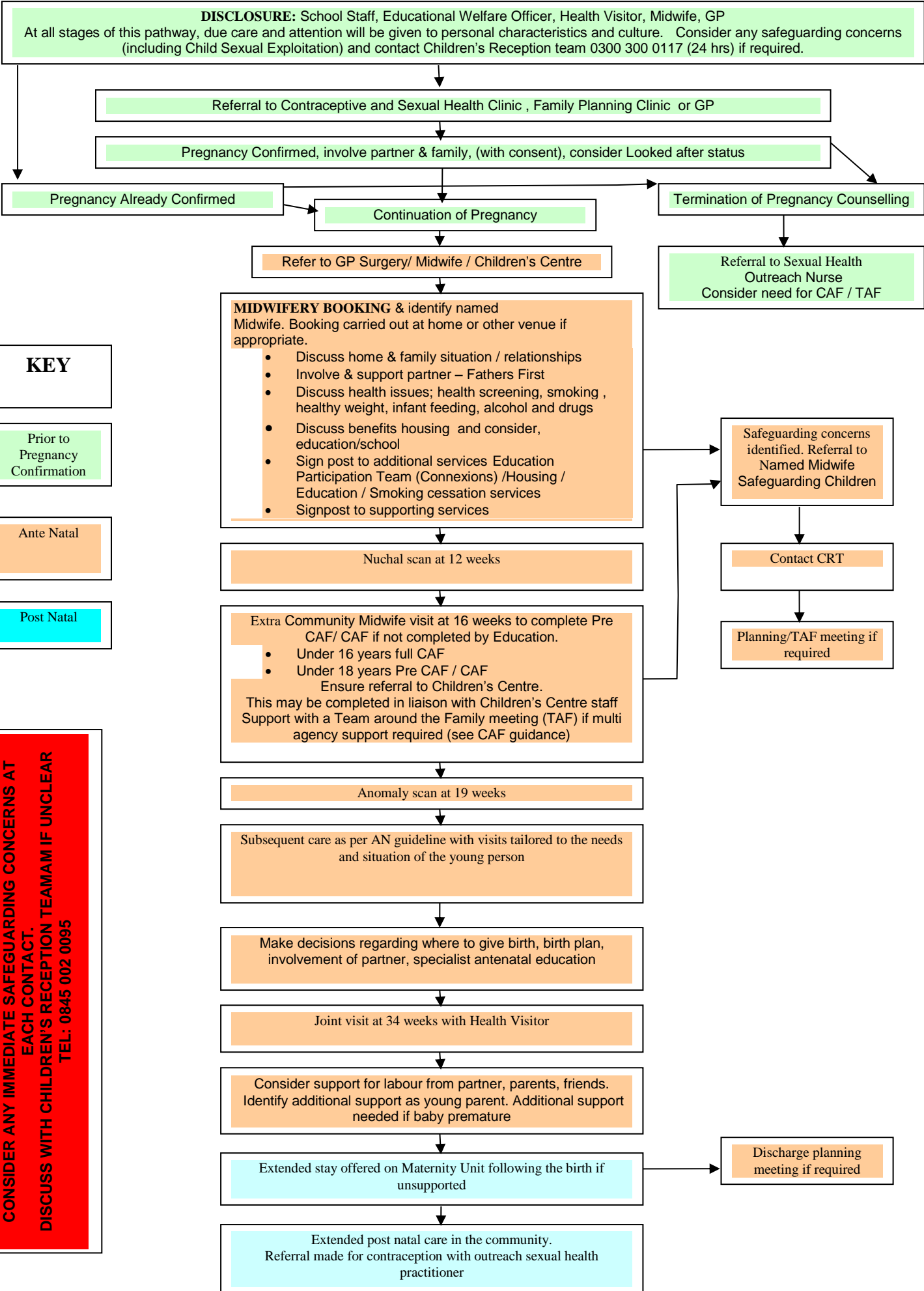


TEENAGE PREGNANCY PATHWAY FOR YOUNG WOMEN (18 yrs & under)



KEY

Prior to Pregnancy Confirmation

Ante Natal

Post Natal

CONSIDER ANY IMMEDIATE SAFEGUARDING CONCERNS AT EACH CONTACT. DISCUSS WITH CHILDREN'S RECEPTION TEAMAM IF UNCLEAR TEL: 0845 002 0095

POST NATAL CARE



Immediate postnatal

Midwifery support for 10 days possible involvement for up to 28 days if required. DISCUSS CONTRACEPTION/SEXUAL HEALTH (especially Long Acting Reversible Contraception) & Prevention of Sudden Infant Death advice



Primary Birth Visit 10 - 14 Days

Joint Midwife & Health Visitor visit to incorporate maternal mental health assessment. Agree on going care plan. If vulnerable may be seen at home more frequently. DISCUSS CONTRACEPTION/SEXUAL HEALTH.



2 weeks postnatal

Sexual Health Outreach Worker/Health Visitor/Community Worker/GP – facilitate young mother to obtain contraception via either prescription or support to access clinic
Update CAF / TAF
Consider need to change future Lead Professional if currently midwife



6-8 weeks

GP – Baby Check and maternal postnatal check, maternal mental health assessment (GP or HV), check contraception established



By 6 weeks

Children's Centre home visit offered



On-Going

Health / Children's Centres supported by Education Participation Team and Young Parent Worker to offer support as identified in the CAF /TAF. Review of education plan post birth.

CONTACT DETAILS

Children's Reception Team: 0300 300 0117 (24 hrs)

Sexual Health Services: 01983 534202

Youth Trust: 01983 529569

British Pregnancy Advisory Service: 08457 30 40 30

Community Midwives via Maternity Ward: 01983 534392

Island Health Line (formerly IDOC): 0845 6031 007

Smoking Cessation Services: 0791 7163 403

Education Participation Team (Connexions): 01983 525927

Get Sorted (Alcohol & Substance misuse advice): 01983 814182

Job Centre Plus: 0800 055 6688

Housing and Community Support: 01983 823040

Children's Centres: www.wightchyps.org.uk/chyps/viewServiceDetails

Cowes: 01983 291719 **East Cowes:** 01983 294701

East Newport: 01983 529208 **West Newport:** 01983 537390

Ryde: 01983 617617 **Ventnor:** 01983 857372

West Wight: 01983 756935

The Bays:

Sandown site: 01983 408718

Shanklin site: 01983 867310

Isle of Wight Common Assessment Framework Information

CAF: <http://www.iwight.com/Residents/Care-and-Support/Childrens-Services/Childrens-CAF/Common-Assessment-Framework-CAF>