

Process Document 3: Management Tools, Application & Review

Introduction

This document, to be read in conjunction with Process Documents 1 & 2, outlines the detail of management tools which support BSB fisheries within three Marine Conservation Zones (MCZs) in Dorset; Purbeck Coast MCZ, Poole Rocks MCZ and Southbourne Rough MCZ as part of the BSB Management Intervention Package.

Detail on the scope of management tools and the provisions each tool provides are given in each section, with management tools defined by the Policy Objective which is achieved by each.

1.0 Management Tools under the Primary Policy Objective

1.1 Bottom Towed Fishing Gear Byelaw 2023

Between 2020 and 2023 the **Southern IFCA BTFG Byelaw 2023**¹ was developed and made by the Authority in order to satisfy multiple aims. The new Byelaw replaced the BTFG Byelaw 2016 and introduced new prohibition areas and extensions to existing prohibition areas across the District. Under the Byelaw, extended protections are afforded to BSB through prohibition areas within which all types of BTFG are prohibited at all times, the passage of a vessel through the prohibited areas carrying BTFG also continues to be managed.

Bottom Towed Fishing Gear Byelaw 2023

Prohibition

- A person must not...use bottom towed fishing gear within a prohibited area
- A person must not...use a vessel carrying bottom towed fishing gear while transiting through a prohibited area unless all parts of that gear are inboard and above the sea

The prohibitions under this Byelaw maintain the whole site protection for Poole Rocks MCZ from BTFG (100% closure) included in the previous BTFG Byelaw 2016, extend and increase the protections for Purbeck Coast MCZ to cover 93% of the site and introduce new whole site protection for Southbourne Rough MCZ in line with the conclusion of the Part B Assessment carried out for this site under the BTFG Review: Phase I (100% closure). For Purbeck Coast MCZ, the determination of the area of the site requiring a prohibition is based on feature-based management of designated features within MCZs in line with Southern IFCA's legal duties and the process for delivering management under the BTFG Review: Phase I. The area remaining open to BTFG is due to their either being no evidence of the location of a designated feature within that area (eastern part of the site) or a lack of confidence in the data indicating the presence of a designated feature (towards the western part of the site), the approach and resulting

¹ [BTFG-Byelaw-2023-signed.pdf](#)

management has been agreed by NE through the BTFG Review: Phase I process and consideration of relevant MCZ Assessments. The prohibition areas under the BTFG Byelaw 2023 overlaid with the three Dorset MCZs is shown in *Figure 1*.

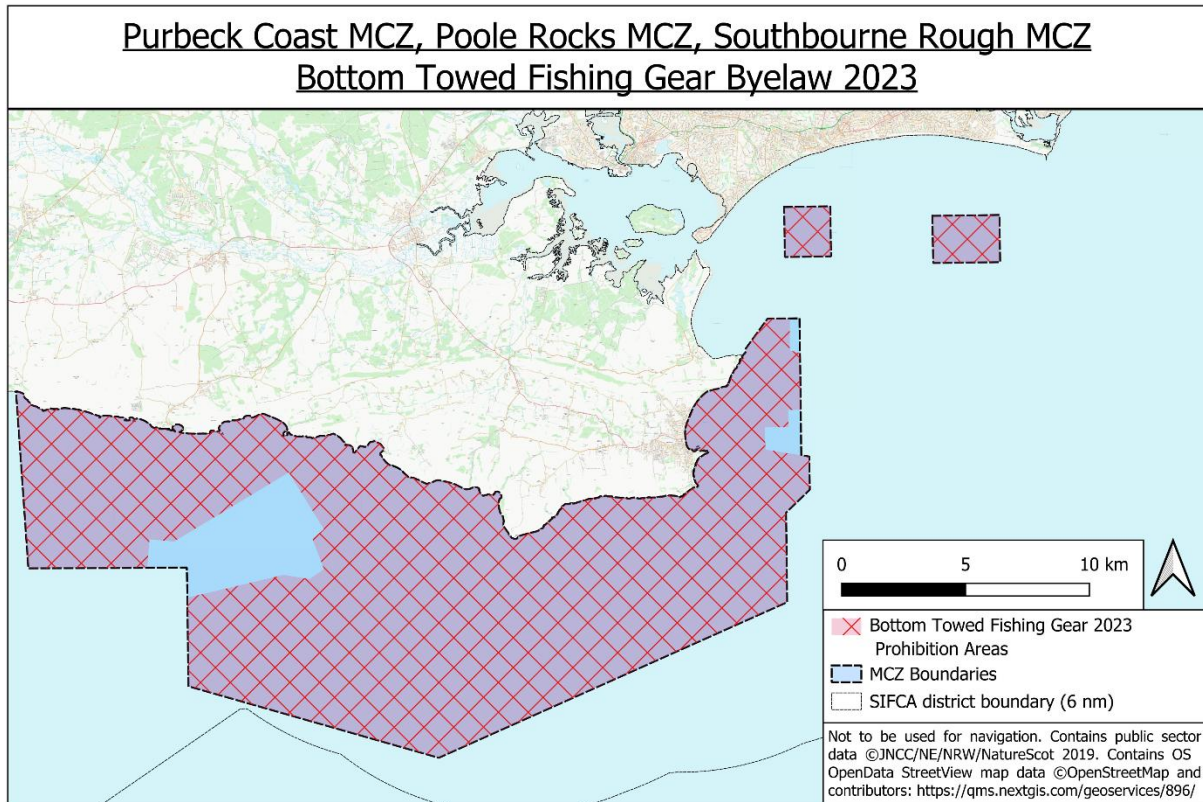


Figure 1: MCZ boundaries for Purbeck Coast MCZ, Poole Rocks MCZ and Southbourne Rough MCZ (grey) overlaid with the relevant prohibition areas under the Southern IFCA Bottom Towed Fishing Gear Byelaw 2023

1.2 Existing External Measures

The spatial closures created by the Lulworth Ranges which, based on best available data, is known to be closed to all activity in the Inner Ranges area for c.32% of the available time between 1st April and 31st July each year, overlaps with c.33% of the Purbeck Coast MCZ (*Figure 2*) and 57% of the BSB nest areas within the site. This provides additional protection for BSB populations from all fishing gear types during the breeding season. The Outer Ranges will also be closed periodically, whilst no information is available to quantify this, the closure of the Outer Ranges would provide additional protections to BSB over (in combination with the Inner Ranges) c.54% of the site. Additionally, the Lulworth ranges continue to operate outside of the breeding season, providing extended protections to BSB outside of the breeding season.

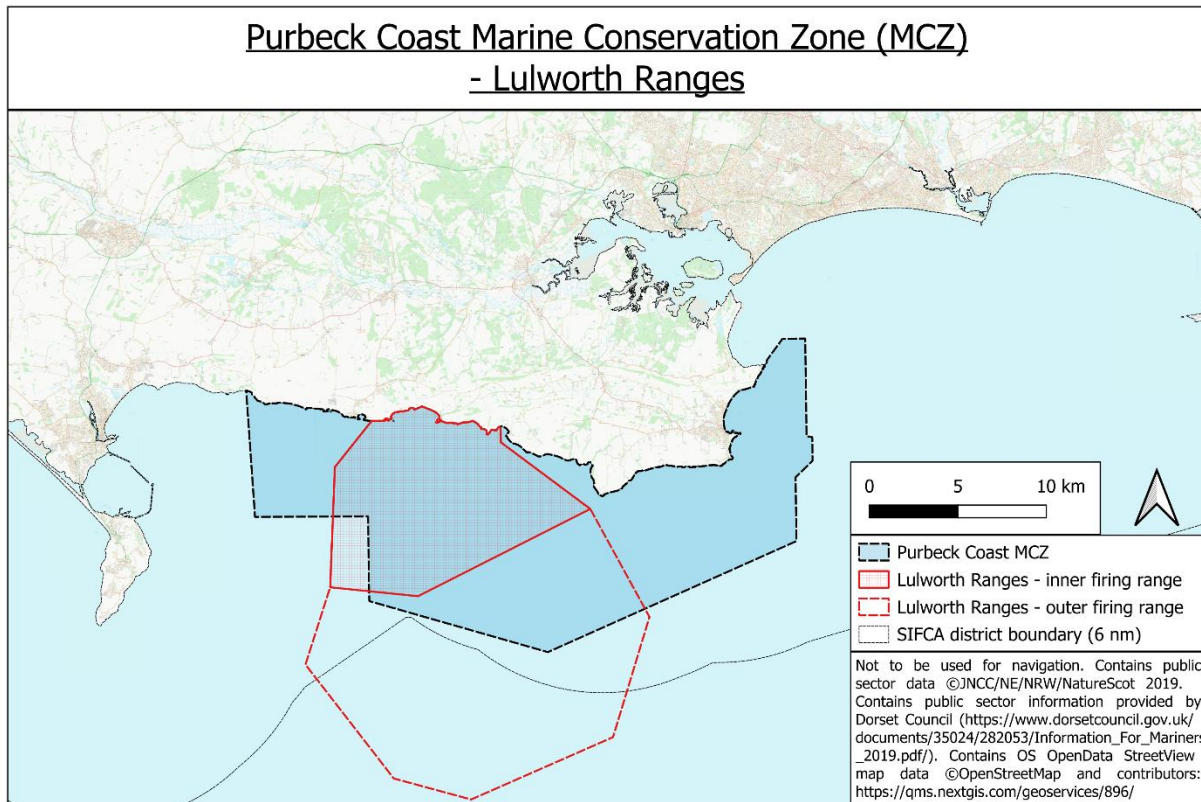


Figure 2: Purbeck Coast MCZ (blue) overlaid with the area of the Lulworth Firing Ranges showing the Inner Ranges (red hashed) and the Outer Ranges (red dashed outline)

1.3 Minimum Conservation Reference Size Byelaw

The Southern IFCA Minimum Conservation Reference Size Byelaw provides a MCRS for BSB at 23cm. There is no national MCRS for BSB therefore the MCRS Byelaw provides protections for this species specifically within the Southern IFCA District by implementing a size below which individuals cannot be removed from a fishery and thus allowing an opportunity for reproduction before removal. The Byelaw extends the MCRS application beyond the immediate act of fishing for or taking the species, prohibiting a person from removing from the fishery, retaining on board, transshipping, landing, transporting, storing, selling, displaying or offering for sale BSB from a fishery within the District².

1.4 Future Management Intentions

The Bottom Towed Fishing Gear Byelaw 2023 provides for reviewing management through a provision allowing the Authority (or a sub-committee thereof authorised by the Authority to do so) to review the suitability of the byelaw in accordance with any changes in available evidence, to include any statutory advice provided by Natural England or other such bodies, organisations or persons at the Authority deem fit.

At the time that any such evidence is available, prior to any review taking place, consideration will be given to the evidence provided in conjunction with Southern IFCA's priority workstreams, balancing any identified need for a review with resource capacity.

² [SIFCA-MCRS-Byelaw.pdf](#)

Southern IFCA will review the scope and requirements for a review of MCRS alongside external data sources including considering alignment with national direction and outputs from the Fisheries Management Plan (FMP) programme and to consider outputs from additional data gathering such as that under the Co-Developed Principles under the Secondary Policy Objective for BSB (see Section 2.0).

1.5 Education and Monitoring Compliance

For statutory management tools under the Primary Policy Objective, education is provided through multiple methods including direct engagement, patrol work, the Southern IFCA website & social media platforms, meetings, presentations, lectures and public events, with engagement tools developed to ensure individuals are fully informed and voluntary compliance is promoted. For example, the BTFG Byelaw 2023 is accompanied by a stakeholder facing infographic detailing the regulations and providing contextual information³.

Southern IFCA is committed to achieving fair, effective and proportionate enforcement with engagement and monitoring carried out through patrol work on land and at sea, and compliance inspections with both commercial and recreational operators. Southern IFCA operates using a risk-based, intelligence-led approach, following operational standards to undertake appropriate compliance and enforcement procedures. Full details can be found in the Southern IFCA Compliance & Enforcement Framework⁴.

2.0 Management Tools under the Secondary Policy Objective

2.1 Co-Developed Principles

As underpinned by a set of Drivers and Headline Objectives, which provided the rationale for the exploration of additional management solutions, the following Co-Developed (CoD) principles; in addition to their application, have been agreed to meet the Secondary Policy Objective for BSB fisheries within the three Dorset MCZs.

Application of Co-Developed Principles:	
Voluntary, applying within the 3 Dorset MCZs, and in force during the period 1 st April to 31 st July	
Co-Developed Principles:	
Minimum Conservation Reference Size	28cm
Maximum Conservation Reference Size	38cm
Recreational Bag Limit	6 fish per person per day
Guidance	Good practice fishing & handling
Data Collection	Year-round, all sectors

³ [BTFG-2023-Infographic.pdf](#)

⁴ [Compliance-and-Enforcement-Framework-2023.pdf](#)

2.2 Management Intentions: Season 1

The Authority recognises the support of the Dorset community in the co-development process and that collectively the community and Southern IFCA are championing a proportionate management approach which fundamentally seeks to improve understandings of BSB populations. This is information which is vital in current and future approaches to sustaining BSB fisheries across the three Dorset MCZs and beyond, allowing ongoing management to be based on improved evidence as supported and informed via ongoing co-development with the community.

To facilitate the continued delivery of co-development, for Year 1 of the implementation of CoD Principles, the focus will be on engagement with all relevant sectors and raising awareness of the CoD Principles, including providing contextual information on the rationale for the exploration of additional management solutions and any contextual information which supports individual CoD Principles. Southern IFCA will monitor compliance with the CoD Principles utilising a variety of available tools, working alongside supporting engagement within the fisheries. Data collected during Season 1 will inform an annual review as detailed in Section 2.4.1.

2.3 Engagement & Monitoring Compliance: Season 1

Engagement and monitoring compliance with the CoD Principles will be carried out using mechanisms detailed below which aim to provide a comprehensive framework for monitoring and feedback of the CoD Principles to support ongoing management of BSB fisheries and the achievement of the Secondary Policy Objective.

The Authority recognises that the greatest way to ensure compliance is to increase knowledge and understanding of the measures in place. In line with the Management Intentions for Season 1, a focus on engagement with all relevant sectors and raising awareness of the CoD Principles through multiple engagement methods aims to achieve a collaborative delivery which seeks to maximise compliance.

2.3.1 Engagement

Engagement aims to inform and educate, in addition to supporting continued co-development by facilitating a continuous feedback mechanism between the Dorset community and Southern IFCA. Engagement also provides a valuable opportunity to understand patterns in fishing activity, any issues regarding compliance with management tools, and on-the-ground feedback on the implementation and application of management tools across different sectors.

In delivering effective engagement, Southern IFCA will seek to work with partner organisations and other bodies such as the Angling Trust, the Professional Boatman's Association, local fishing organisations such as the Poole & District Fishermen's Association, the Poole & District Sea Angling Association, the South Coast Fishermen's Council and the Recreational Angling Sector Group to facilitate the dissemination of information, help promote the benefits of the co-development approach to sustainable BSB fisheries and to help support reviews of management and ongoing management intentions through the sharing of feedback from the community.

Southern IFCA will also ensure that information is made available to other regulators, for example through the Tactical Co-ordination Group (TCG) process including the Marine Management Organisation, the Environment Agency and neighbouring IFCAs to facilitate engagement across a wider network.

Engagement will be facilitated using different methods to maximise delivery of information and awareness of the CoD Principles (*Figure 3*).

It is the intention of Southern IFCA to facilitate co-development through a sense of ownership and shared responsibility for BSB fisheries in Dorset, one method of achieving this is to allow responsible fishers to promote their support for and implementation of the CoD Principles, demonstrating their role as a key custodian of the marine environment and providing a supportive mechanism for local businesses to advertise their role in supporting sustainable BSB fisheries. Fishers will be invited to display a ‘Black Seabream Custodians’ sticker (*Figure 4*) with an associated hashtag to promote the good work being delivered and encourage further engagement by other members of the community with the CoD Principles. Southern IFCA will be actively seeking support from local organisations, clubs and wider bodies including the Angling Trust and the Professional Boatman’s Association in promoting this initiative.

	Attendance at stakeholder meetings e.g. Fishermen’s Council, Poole & District Fishermen’s Association, Poole & District Sea Angling Association, Recreational Angling Sector Group, Professional Boatman’s Association, RFGs.		Creation of short videos to illustrate good handling practice which can support understandings of different handling methods
	Charter vessel information materials for use by skippers and customers, easy to use format at sea (for example stickers)		Creation of a QR code to link to Southern IFCA dedicated webpage, for use on all information materials
	Information materials for tackle and bait shops (<i>see other engagement materials for detail on what can be provided</i>)		Creation of information leaflets and posters, for dissemination at stakeholder meetings, to charter vessel operators, for tackle/fishing shops, accessed via the Southern IFCA website and made available to partner organisations for dissemination – to provide contextual information as well as detail of CoD Principles
	Dedicated webpage on the Southern IFCA website with links to all relevant information and downloadable materials, also to host online submission methods for data collection		Social media # for use on Southern IFCA social media platforms (X, Instagram, Facebook) and by partner organisations as well as stakeholders and the wider Dorset community
	Working with partner organisations such as the Angling Trust to promote awareness campaign and help distribution information		

Figure 3: Methods of engagement for management tools under the Secondary Policy Objective to maximise delivery of information to the community and raise awareness of the Co-Developed Principles.

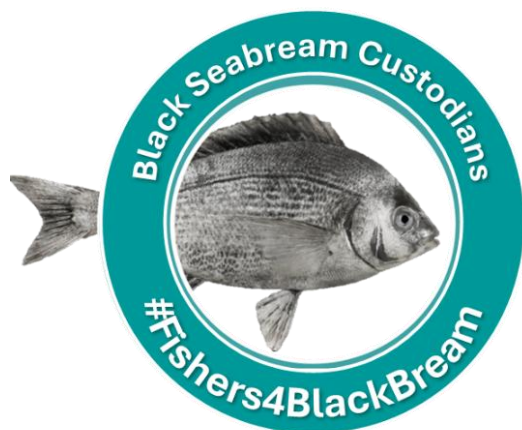


Figure 4: An example of the ‘Black Seabream Custodians’ sticker which fishers in the Dorset Community can display to show their role as key custodians for sustainable BSB fisheries and to promote a community approach to co-development.

2.3.2 Monitoring Compliance

As outlined in Section 1.5, Southern IFCA is committed to achieving fair, effective and proportionate monitoring of compliance and enforcement. In monitoring compliance with the CoD Principles, Southern IFCA is committed to maintaining engagement alongside monitoring, recognising that this is important for maintaining trust in the monitoring work carried out, facilitating communication and maximising compliance with the CoD Principles. Details of engagement tools which can be used to support the delivery of the CoD Principles are given in Section 2.3.1. As part of any monitoring activities consideration will be given to the most appropriate engagement tools to utilise and promote.

Southern IFCA has multiple tools available to monitor compliance:



At sea patrols



Port visits



Inspections at sea



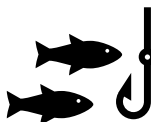
Landing/in port inspections



Inspections of merchant/processing premises



Drone flights



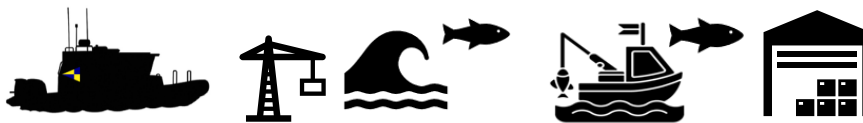
Gear inspections

MCRS

The MCRS CoD Principle is designed to allow BSB the opportunity to reproduce at least once before being removed from the fishery, to support sustainable populations and reproductive effort. The MCRS of 28cm reflects best available evidence on the size at which 95% plus of the population for female BSB become mature (noting there is no similar evidence available for male BSB), and the size range at which BSB change sex from female to male, the MCRS aiming to avoid fishing effort being directed at only one gender.

The CoD Principle for MCRS of 28cm is applicable to all sectors and all methods of fishing. As per regulations for MCRS under the Southern IFCA MCRS Byelaw, the CoD Principle would be applied to all parts of the supply chain, therefore monitoring compliance will encompass monitoring of fishers in the BSB fisheries as well as at merchants & processors.

The main methods of monitoring compliance with this CoD Principle are:

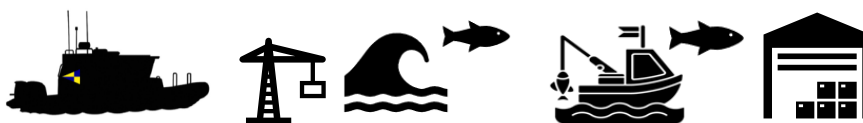


MaxCRS

The MaxCRS CoD Principle is designed to help protect larger BSB individuals which are often most important ecologically and for reproduction. It offers protection to male BSB (given the change in sex from female to male), the larger individuals being suggested to guard multiple clutches of eggs, attract more females and have more success in defending nests. MaxCRS is noted to be a beneficial management measure for fish which change sex during their life cycle.

The CoD Principle for MaxCRS of 38cm is applicable to all sectors and all methods of fishing. As per regulations under the Southern IFCA MCRS Byelaw, the CoD Principle would be applied to all parts of the supply chain, therefore monitoring compliance will encompass monitoring of fishers in the BSB fisheries as well as at merchants & processors.

The main methods of monitoring compliance with this CoD Principle are:



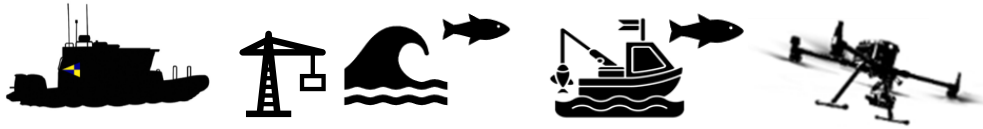
Recreational Bag Limit

The recreational bag limit CoD Principle is designed to support sustainable BSB fisheries by limiting the removal of BSB as a target species within recreational fisheries. The combination of this with other CoD Principles, for example MCRS and MaxCRS and good handling guidance increases the benefits of this measure, in combination helping to avoid unintended practices such as high-grading and providing a holistic approach to sustainability in the fishery.

The CoD Principle for a recreational bag limit of 6 black seabream per fisher per day is applicable to the recreational angling and charter vessel sectors using rod & line. Monitoring compliance with the recreational bag limit will involve working closely with charter vessel operators and local angling clubs, and Southern IFCA will be seeking support from operators, as part of the education and awareness campaign to encourage customers to promote their support and compliance with

this CoD Principle utilising the social media hashtag. In addition, fisher-dependent data collected under the Data Collection CoD Principle (see Data Collection Section) will provide additional data to monitor compliance with the Guidance CoD Principle.

The main methods of monitoring compliance with this CoD Principle are:



Guidance

The Black Seabream Fishery Guidance developed under this CoD Principle supports good fishing practice relevant to the BSB fisheries and includes recommendations on fishing gear, handling techniques, and care practices designed to improve survivability through minimal handling time and air exposure. Consistent handling practices will also support improved data for the fishery over time, helping to deepen understandings of BSB populations and the effectiveness of management.

The main methods of monitoring compliance with this CoD Principle are:



Data Collection

BSB populations and associated fisheries are considered data poor, the data collection programme will provide data at the spatial scale of the three MCZs, supporting wider external research on BSB, and to provide an evidence base to help inform ongoing management of relevant fisheries. The data collection programme will also provide data to the Seabreams FMP during the implementation phase helping to support local and national management through an aligned, evidence-based approach.

Data Collection mechanisms seek to develop greater understandings of BSB populations and fisheries, to include:

- activity levels within the MCZs,
- landings data from the MCZs,
- relative proportions of BSB caught in relation to MCRS and MaxCRS CoD-Principles,
- breeding patterns (spatially and temporally),
- use of different fishing methods,
- the proportion of BSB caught of different sexes

Data will be sought from commercial fisheries (net, rod & line), recreational fisheries (rod & line) and charter vessel fisheries (rod & line) via multiple platforms, as described in [Annex 1](#).

It is recognised that the provision of data can introduce an additional effort requirement for fishers and therefore, as part of the delivery of this CoD Principle, Southern IFCA will be providing contextual information for data collection, the benefits of provision of data at this spatial level and how the data will be used to help inform ongoing management, to help support and maximise participation. Southern IFCA will, as part of engagement across all sectors, be seeking feedback

on this programme and the community are encouraged to provide feedback on the application of this CoD Principle to feed into annual reviews (see Section 2.4).

In seeking data through the programme, and to support the availability of information to encourage participation, Southern IFCA will be working with other organisations to help support the provision of fisher-dependent data through promotion of data requirements, sharing of links to submit data and seeking support in the dissemination of engagement materials outlining the purpose of the data collection programme and how the community can participate. Southern IFCA will also engage with other data sources such as the Sea Angling Diary which is run in partnership with Cefas to explore opportunities for data sharing.

As part of monitoring compliance, information on how to participate in the data collection programme will be provided to fishers in addition to through all other relevant engagement tools outlined in Section 2.3.1.

Monitoring compliance with this CoD Principle will include engagement with fishers across all sectors, at sea and on land, to ascertain whether individuals are participating and, if not, what the reasons are for not participating. Monitoring during engagement and inspections will also include Officers gathering fisher-independent data, utilising the same data collection deliverables outlined in Annex 1, which will be used as part of overall analysis and also as a method of quality assuring the fisher-dependent data.

Further collection of fisher-independent data will be explored prior to and during Season 1, to determine suitable additional methods for supporting fisher-dependent data collection and analysis, exploration of such methods may include observer trips, partnership working or working with academic institutions.

The main methods of monitoring compliance with this CoD Principle, and to facilitate Officers collection of fisher-independent data are:



In addition to delivering the data collection programme, Southern IFCA will engage with Sussex IFCA, Natural England, the Angling Trust and any relevant fisher associations to explore opportunities for joint data collection through projects or programmes which will help support the development of the evidence base for BSB across identified evidence gaps. Outputs from the Seabreams FMP will help inform this process through the publication of known evidence gaps and an indication, through the FMP implementation process, of the prioritisation and ability of other authorities & academic institutions to support evidence gathering to fill identified gaps. Equally, data collected by Southern IFCA through the data collection programme and through any additional programmes delivered by or between agencies/organisations in accordance with organisation remit will help support the implementation of the Seabreams FMP through provision of evidence.

A summary of the monitoring components is given in Table 1. In addition to data gathered by Southern IFCA relating to monitoring compliance with CoD Principles, external monitoring tools such as VMS, MMO catch data and the provision of information by other regulators through the TCG process will also be collated, where available, to support monitoring and the provision of data related to BSB fisheries.

Table 1: Components of monitoring within the BSB fisheries related to CoD Principles

Monitoring						
Component	MCZ	Sector	Data Requirement	Responsibility	CoD Principle	Analysis
A: Data Collection Programme – fisher-dependent	<ul style="list-style-type: none"> Purbeck Coast Poole Rocks Southbourne Rough 	<ul style="list-style-type: none"> Commercial Private Recreational Charter 	Data recorded in line with requirements detailed in Annex 1	Stakeholders in the BSB fishery	<ul style="list-style-type: none"> MCRS MaxCRS Recreational Bag Limit Guidance 	Analysis following end of season for Year 1
B: Data Collection Programme – fisher-independent	<ul style="list-style-type: none"> Purbeck Coast Poole Rocks Southbourne Rough 	<ul style="list-style-type: none"> Commercial Private Recreational Charter 	Data recorded by Officers as part of patrols/inspections in line with requirements detailed in Annex 1	Southern IFCA	<ul style="list-style-type: none"> MCRS MaxCRS Recreational Bag Limit Guidance 	Analysis following end of season for Year 1
			Data recorded through any other methods explored for Season 1			
			Record of data submissions	Southern IFCA	<ul style="list-style-type: none"> Data Collection 	
C: Targeted Compliance	<ul style="list-style-type: none"> Purbeck Coast Poole Rocks Southbourne Rough 	<ul style="list-style-type: none"> Commercial Private Recreational Charter 	Data from targeted compliance trips carried out to implement monitoring in accordance with S2.3.2	Southern IFCA	<ul style="list-style-type: none"> MCRS MaxCRS Recreational Bag Limit Guidance Data Collection 	Analysis following end of season for Year 1
D: Non-Targeted Compliance	<ul style="list-style-type: none"> Purbeck Coast Poole Rocks Southbourne Rough 	<ul style="list-style-type: none"> Commercial Private Recreational Charter 	Data from non-targeted compliance trips carried out to implement monitoring in accordance with S2.3.2	Southern IFCA & partner organisations Supported via TCG	<ul style="list-style-type: none"> MCRS MaxCRS Recreational Bag Limit Guidance Data Collection 	Analysis following end of season for Year 1
E: External Monitoring Tools (i.e., VMS, Catch App, Sea Angling Diary)	<ul style="list-style-type: none"> Purbeck Coast Poole Rocks Southbourne Rough 	<ul style="list-style-type: none"> Commercial Private Recreational Charter 	Data sharing processes for external monitoring tools continue to be developed, data from this component will complement other monitoring components according to available data	Partner organisations Supported via TCG	<ul style="list-style-type: none"> Data Collection 	Analysis following end of season for Year 1

2.4 Review

Southern IFCA recognise that BSB fisheries are data poor, as such an adaptive management approach, as facilitated under the Secondary Policy Objective, allows Southern IFCA to robustly respond to best available evidence in a timely way to ensure the future sustainability of the fisheries in Dorset.

In order to facilitate an adaptive approach, Southern IFCA are committed to reviewing the management tools under the Secondary Policy Objective through both an Annual Review pathway and a Wider Review pathway, the latter incorporating a review of the MCZ Conservation Assessment Package which underpins the Primary Policy Objective and outlines the additional support provided to sustainable management of BSB in the three Dorset MCZs under the Secondary Policy Objective in line with the defined Policy Drivers and Headline Objectives.

2.4.1 Annual Review

The first Annual Review of the CoD Principles will follow the conclusion of the recognised breeding season in Year 1 of implementation, intended for 2026. Following this, an annual review will be carried out each year for 2027-2029 following the breeding season.

The Annual Review, will consider:

- **community feedback** following on the application of the CoD Principles & overall health of BSB fishery.
- analysis of **data collected** during the applicable season,
- additional data collected (running all year-round)
- **IFCA compliance & enforcement metrics**,
- **data from external sources** (other relevant authorities),
- any updated **Conservation Advice** from Natural England,
- **BSB FMP** outcomes (goals, actions and data gaps),
- **emerging evidence on BSB populations or fisheries** (for example published outputs from the Angling for Sustainability Project).

Following Annual Review in any given year, if changes to the CoD Principles are identified to be required, any proposals will be considered with the community prior to final consideration by the Authority. Any changes will be implemented prior to the subsequent season.

Following Annual Review in any given year, if singular or multiple CoD Principles are deemed to be not achieving the Policy Objectives, then consideration may be given to the development of fisheries relevant triggers and/or statutory management mechanisms for one or more CoD Principles in accordance with recognised practice. In this instance, Southern IFCA would follow the established byelaw making process with associated opportunities for consultation with stakeholders.

2.4.2 Wider Review

Notwithstanding the commitment in Section 2.4.1 based on the outcomes of an Annual Review, a wider review, to incorporate a review of the MCZ Conservation Assessment Package will take place following the 2029 breeding season, at which point all best available evidence will be considered, including that collected and reviewed through each Annual Review under the CoD Principles as well as any external evidence or updated Formal Advice from Natural England.

Through this review process, Southern IFCA will work collectively with the community, considering the elements listed in Section 2.4.1, to determine whether the Primary and Secondary Policy Objectives continue to be met.

As per the Annual Review process, consideration may be given at this point to the development of fisheries relevant triggers and/or statutory management mechanisms for the management of BSB fisheries in the three Dorset MCZs in accordance with recognised practice, including, if required, the Southern IFCA established byelaw making process, with associated opportunities for consultation.

The Authority wish to maintain the co-development approach to achieving the Secondary Policy Objective for this fishery, recognising the importance of industry expertise in shaping this process and supporting sustainable BSB populations and fisheries alongside thriving coastal communities.

Annex

Annex 1 – Data Collection Requirements

Sector	Required Data	Additional Data <i>(recognising that this may be more difficult for stakeholders to provide)</i>	Submission Methods
Commercial	<ul style="list-style-type: none"> ▪ Vessel name and PLN ▪ Date of trip ▪ Method (Net or Rod & Line) ▪ Location (Coordinates) ▪ Duration of trip or net soak time ▪ Total length of net hauled, or total number of rods used ▪ Was bream the target species or bycatch ▪ Weight of bream retained ▪ Number of bream under MCRS returned ▪ Number of bream over max CRS returned 	<ul style="list-style-type: none"> ▪ Number of bream displaying breeding colours when bought on board ▪ Number of roed bream caught <p><i>Option will also be given for providing any additional comment</i></p>	<ul style="list-style-type: none"> • An Online form able to be submitted at the end of every trip or on a monthly basis • A Monthly log that can be submitted within 14 days following end of month <ul style="list-style-type: none"> ○ Made available to download or print on the SIFCA website ○ A QR code will be made available to submit the catch return by email
Recreational & Charter Vessels	<ul style="list-style-type: none"> ▪ Vessel name ▪ Date of trip ▪ Charter or private vessel ▪ Location (Coordinates) ▪ Duration of trip ▪ Number of anglers ▪ Number of rods ▪ Was bream the target species? ▪ Number of bream retained ▪ Number of bream under MCRS returned ▪ Number of bream over max CRS returned ▪ Method (lure, bait type etc.) 	<ul style="list-style-type: none"> ▪ Number of bream displaying breeding colours when bought on board ▪ Number of roed bream caught ▪ Weight of fish retained <p><i>Option will also be given for providing any additional comment</i></p>	