

# BLACK SEABREAM CO-DEVELOPED PRINCIPLES



Working with the Dorset Community to promote sustainable fisheries for black seabream

Introduced from 1<sup>st</sup> April 2026

Minimum Conservation Reference Size	28cm
Maximum Conservation Reference Size	38cm
Recreational Bag Limit	6 fish per person per day
Guidance	good practice fishing & handling
Data Collection	year-round, all sectors



The Co-Developed Principles are voluntary, we encourage participation from all fishing sectors to ensure the continued sustainability of black seabream fisheries.

## WHO IS THIS FOR?

All fishers for black seabream:

- Commercial fishers
- Recreational fishers
- Charter fishing vessels



## WHEN DOES IT APPLY?

For the identified breeding season for black seabream in the Dorset MCZs:

**1<sup>st</sup> April to 31<sup>st</sup> July each year**

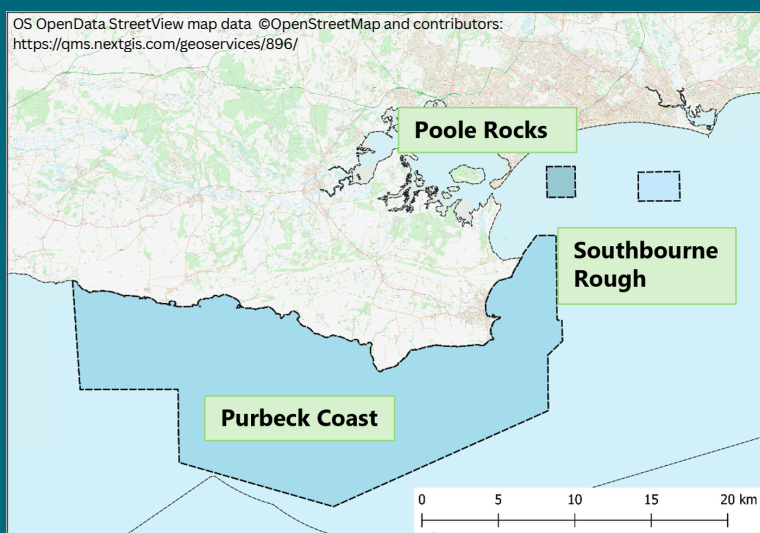
The data collection programme will run year-round

## WHERE DOES IT APPLY?

The Co-Developed Principles apply to three Marine Conservation Zones (MCZs) in Dorset:

- Purbeck Coast
- Poole Rocks
- Southbourne Rough

A Google Maps tool is available to help the community locate the MCZs, please visit [www.southern-ifca.gov.uk/black-seabream-fisheries](http://www.southern-ifca.gov.uk/black-seabream-fisheries) for more details & to access the tool.



## WHY ARE WE TAKING ACTION?

**Black seabream are an important species in Dorset waters.**

They are a designated species of three MCZs:

- Purbeck Coast
- Poole Rocks
- Southbourne Rough

Black seabream are novel in displaying male nest building and egg guarding behaviour and as such are designated for their ecological significance.

The species is important for **commercial** and **recreational** fisheries during the spring and summer months, supporting local economies and coastal communities.



## WHAT IS THE AIM?

- ✓ To improve understandings of black seabream and relevant fisheries
- ✓ To take a proportionate & adaptive approach to management
- ✓ To support long-term sustainability
- ✓ To work in partnership with the Dorset Community



## WHAT HAPPENS NEXT?

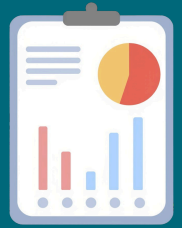
Southern IFCA will continue to work with the Dorset Community in the implementation and monitoring of the Co-Developed Principles.

We encourage you to share this information with your colleagues, club members, friends and family to help promote engagement and education on the new measures.

Southern IFCA will be engaging across the fishing community during the breeding season (1<sup>st</sup> April to 31<sup>st</sup> July) and we welcome your feedback on the Co-Developed Principles and how they are working within the fishery.

## GET INVOLVED

If you fish in the Dorset MCZs for black seabream we need you to take part in the **Data Collection Programme** to support increased understandings of black seabream fisheries.



Please visit the Southern IFCA website at the address below or via the QR code for more information on the data collection programme and details of how you can submit data to Southern IFCA.

The data collection programme will run year-round to help support the creation of a database for black seabream as a data-poor species and a source of best available evidence to inform future reviews of management measures.

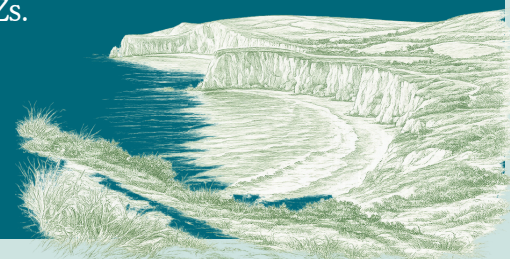
[www.southern-ifca.gov.uk/black-seabream-fisheries](http://www.southern-ifca.gov.uk/black-seabream-fisheries)



## REVIEW

Following the end of each breeding season a review will be carried out considering all relevant feedback, input and evidence that has been gathered that year.

After 2030, Southern IFCA will explore a wider review of management measures to ensure that black seabream fisheries can continue to operate sustainably within the Dorset MCZs.



**Sustainable fisheries supporting long-term benefits for the marine environment & coastal communities**