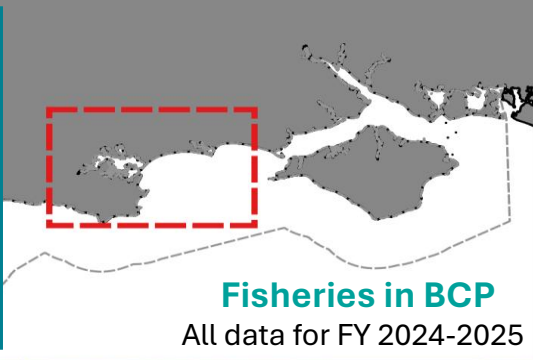
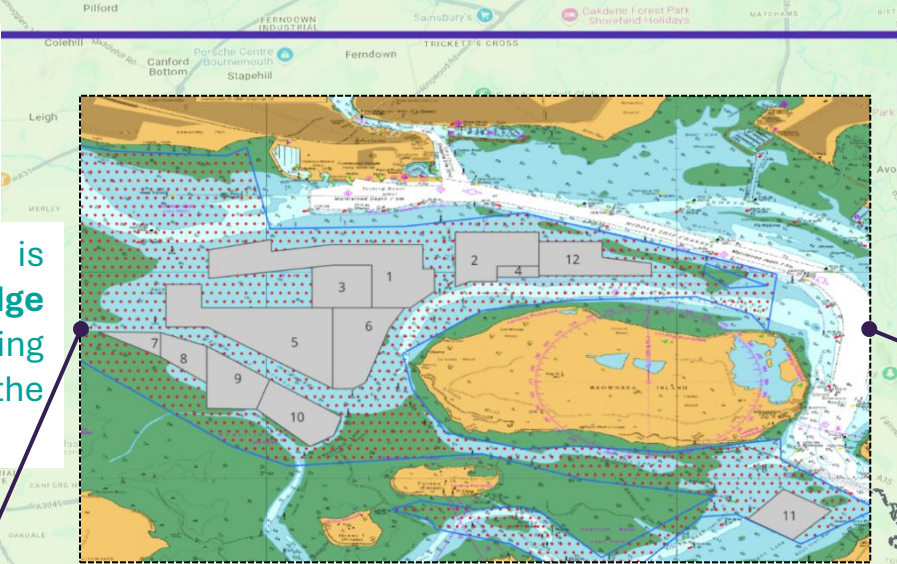


**Commercial fishing activity** includes pump-scoop dredging, netting, trap & pot and rod & line. **Key species** harvested include clams, cockle, crab, lobster, black seabream, bass, mullet and whelk.

The unique **pump-scoop fishery** is managed under the **Poole Harbour Dredge Permit Byelaw** which ensures that fishing activity remains compatible with the conservation objectives in Poole Harbour.



**Fisheries in BCP**  
All data for FY 2024-2025

Southern IFCA manage **aquaculture** activity within a defined area of Poole Harbour (c.838 hectares) under the largest **Several Order** in the UK. Key species harvested include Pacific oysters and mussels.

Leases are valid for 5 years, for 2025-30 the process of application and lease allocation is ongoing with engagement with current leaseholders and reviews of management documents.

- ✚ Trawl
- ★ Trap/Pot
- ▲ Dredge
- Net
- Line

Main Ports & Harbours

No. of IFCA registered vessels

Lease Beds



Poole



Mudford

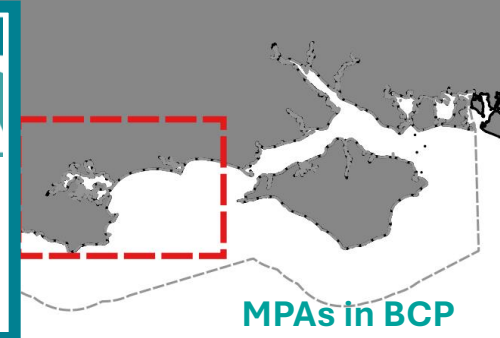
There are **83 registered vessels** (82 x  $\leq 10\text{m}$ , 1 x  $\geq 10\text{m}$  -  $\leq 12\text{m}$ ) permitted by Southern IFCA to commercially fish inside 6nm. A Southern IFCA Byelaw requires that all vessels operating inside 6nm are  $\leq 12\text{m}$  in length.

There is a large **recreational and charter rod & line** community with the area hosting nationally important shore and sea angling hotspots. Key species of interest include bass, black seabream and rays.





There are 8 Marine Protected Areas (MPAs) which are designated to protect important habitats and/or species. Each MPA may require bespoke feature-based management, relevant to the risk posed by fishing activity.



All data for FY 2024-2025

- Marine Conservation Zones
- Special Areas of Conservation
- Special Protection Areas

### Poole Harbour SPA

*Breeding species:* Common tern, Mediterranean gull, Sandwich tern  
*Non-breeding species:* Avocet, Black-tailed godwit, Little egret, Shelduck, Spoonbill

### Poole Rocks MCZ

Black seabream, Couch's goby, Native oyster, Subtidal mixed sediment (star fish, sea urchins, bivalves), Circalittoral rock (seaweeds, sponges, bryozoans, common lobster, crab species)

### River Avon SAC

Atlantic salmon, Brook lamprey, Bullhead, Sea lamprey

### Southbourne Rough MCZ

Black seabream (nest site)

### Studland Bay MCZ

Long snouted seahorse, Seagrass beds (bass, undulate rays), Subtidal sand (spiny & short-snouted seahorse)

### Purbeck Coast MCZ

Black seabream, Maerl beds, Peacock's tail, Stalked jellyfish

### Studland to Portland SAC

Reefs (chalk, shale, mussel beds)

### Solent & Dorset Coast SPA

*Breeding species:* Common tern, Little tern, Sandwich tern



The **Southern IFCA Data Collection, Survey & Monitoring Programme** seeks to further understandings of fisheries, working with industry to provide the best available evidence to inform relevant annual reviews, ensuring that any management interventions in place remain aligned to their overarching objectives.

**Poole Harbour Bivalve Survey**, using a chartered PHDP fishing vessel, seeks to assess the distribution and abundance of harvested bivalve species in the Harbour, such as Manila clam, common cockle and American Hard-shelled clam. The survey supports understandings of stock levels for the Permit fishery.

**PHDP Data collection** via monthly catch returns is used to analyse changes in catch levels within and between fishing seasons to identify patterns and to relate to stock levels.

These two data sources have been used to develop **empirical reference points** for Manila clam in the PHDP fishery as part of the development of a Monitoring & Control Plan to monitor stock sustainability.

**The Juvenile Fish Survey** assesses the occurrence and distribution of young fish. The time series data-set allows changes in fish communities to be observed overtime. The survey is undertaken with a range of partners.

The Southern IFCA monitoring programme also supports the following **Fisheries Management Plans (FMPs)** via provision of data to support FMP objectives for the Seabreams, Cockle and Whelk FMPs.

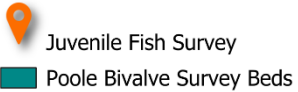
**The Whelk Population Survey** assesses the distribution and abundance of common whelk across Poole Bay, in collaboration with fishers.

**Bournemouth University**

Industry support the **whelk survey programme** via industry led data collection and chartered use of fishing vessels to collect data. Lab facilities are provided by Bournemouth University for sample analysis.



**Research relevant to BCP**  
All data for FY 2024-2025





### Review: Phase 1

Bottom Towed Fishing Gear Byelaw 2023 submitted to the MMO & Defra for quality assurance prior to ratification, outcome of the BTFG Review Phase I.



### MMO QA Process

**Apr 24 to Sept 24**  
Rounds 2 to 5 of QA with the MMO received and addressed



### Submission to Defra

Following QA with the MMO, the byelaw package was submitted to Defra for QA.



### Defra QA

**Dec 24 to Mar 25**  
3 rounds of QA completed with Defra



### Next stage

Await notification of submission to Minister's Office for ratification

## Bottom Towed Fishing Gear Review

**4% (6.0km sq.)** of the BCP marine environment is protected from Bottom Towed Fishing Gear via the Southern IFCA BTFG Byelaw 2016 Following the pending ratification of the BTFG Byelaw 2023 these protections will increase

## Net Permit Byelaw Review



### Year 1 Review

Year 1 Review of Net Permit Conditions, Permit Fees & Limitations on no. of Permits



### Outcomes

Monitoring & Control Plan updated in line with best available evidence on salmonid populations. No changes to permit conditions, fees or no. of permits for Year 2.

**to 10% (12.3 km sq.)**. 100% of Poole Harbour is managed for BTFG under the Poole Harbour Dredge Permit Byelaw.

Collectively this work is helping to meet the **UK Government target of 30% protections by 2030** in the inshore environment.



### Previous Work

Pot Fishing Byelaw submitted to MMO & Defra for quality assurance prior to ratification



### MMO QA Process

**Apr 24 to Mar 25**  
Rounds 2 & 3 of QA with the MMO received and addressed. Additional information provided on request.

## Pot Fishing Review



### Previous Year

Consideration of draft measures as output from the Shore Gathering Review.



### Management Development

Draft measures formalised, presented with supporting documents to the Authority, Formal Advice sought from NE.



### Byelaws Made

Shore Gathering Byelaw and Fishing for Cockles (Amendment) Byelaw Made by the Authority in Sept. 24. Supported by Seaweed Harvesting Code of Conduct.



### Formal Consultation

On both Byelaws running until 14th November 2024.



### MMO QA

Authority recommended that Byelaws are submitted to the MMO & Defra for quality assurance. Round 1 of MMO QA received.



### Next stage

Await any further rounds of QA from MMO or Defra.

## Shore Gathering Review

Shore Gathering restrictions will be introduced in **4.3% (7.3km sq.)** of the BCP marine environment via the Shore Gathering Byelaw (following ratification), which is further supported by the Seaweed Harvesting Code.

During the year Southern IFCA have been working closely with the relevant fishing sectors, via a staged approach to begin the co-development of draft **shared principles of management**, to be considered as one of the management tools relevant to black seabream fisheries in Poole Rocks & Southbourne Rough MCZs.



### Previous Year

TAC Members agreed General, Evidence and Spatial Principles to help facilitate the progression of management considerations for BSB across 3 Dorset MCZs.



### Quantification of Impact Exercise

Working with the community to understand potential impact of introduction of no take zones across 13 Indicative Habitat Areas & to consider social, economic, culture and heritage aspects of impact.



### In Year Review

Three month review of BSB work undertaken to date. Consolidation of all relevant material considerations & understanding of route to designation. Contextual understandings for decision making taken to Member Working Group.



### Co-development Phase

1. Member WG to explore draft Principles, defining Drivers & Headline Objectives and discussing management proposals.
2. Industry Workshop to consider & further inform draft principles
3. Officer feasibility exercise on management options
4. Member WG to draw together & review all co-developed components.



### Next stage

Co-Developed Principles to be taken forward to public consultation.



### Next stage

Await any further rounds of QA from MMO or Defra.

## Black Seabream Review



### Developing Management

### Reviewing Management



## Policy Development relevant to BCP

All data for FY 2024-2025



Port Visits: 83

Premises Inspections: 9

Person Inspections: 20

Vehicle Inspections: 16

## Compliance Focus Areas

- Minimum Conservation Reference Size Byelaw
- Poole Harbour Dredge Permit Byelaw
- Net Fishing Byelaw
- Bottom Towed Fishing Gear Byelaw 2016
- Poole Harbour Bait Digging Agreement
- Hand Gathering regulations
- National Bass Regulations

**Verbal Warnings:** 12 x breach of MCRS, 1 x Net Fishing Byelaw

**Official Written Warnings:** 1 x Net Fishing Byelaw, 4 x breach of MCRS, 2 x spatial incursions, 1 x Bass Regulations

**Fixed Administrative Penalty:** 1 x breach of MCRS, 3 x spatial incursions.

**Prosecution:** 1 x failure to comply

## Enforcement Action Taken

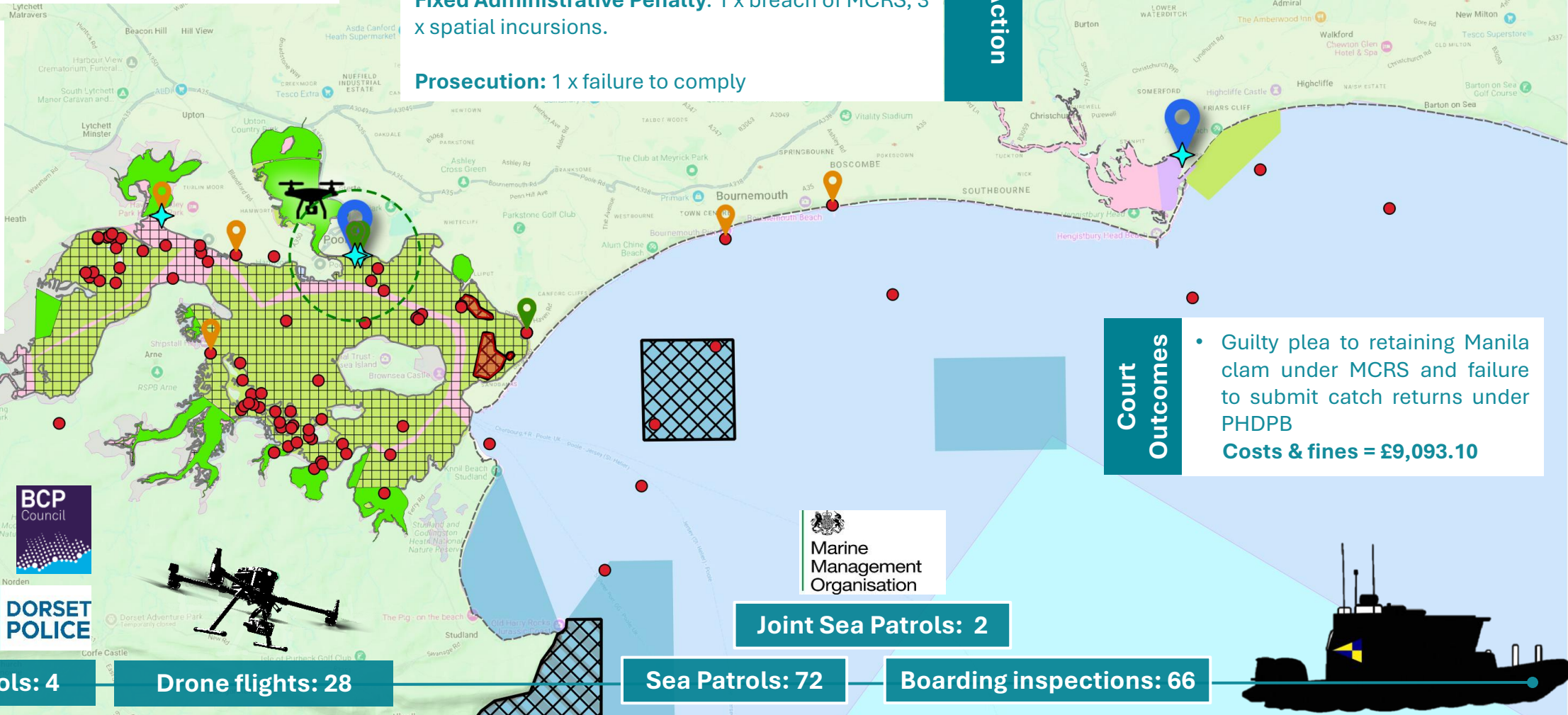


**Compliance & Enforcement relevant to BCP**

All data for FY 2024-2025

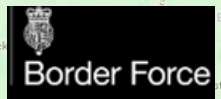


- Drone flights
- Port visits
- Premises
- Person
- Vehicle
- Port landings (vessel)
- Inspections (Land & Sea)
- BTFG 2016 Byelaw
- Poole Harbour Dredge Permit byelaw
- Poole Harbour Shellfish Hand Gathering
- Prohibit gathering in seagrass beds
- Net Fishing Byelaw:
  - Net Permit Area
  - Net Restriction Area
  - Net Prohibition Area
- Marine Conservation Zones
- Special Areas of Conservation
- Special Protection Areas



## Court Outcomes

- Guilty plea to retaining Manila clam under MCRS and failure to submit catch returns under PHDPB
- Costs & fines = £9,093.10**



Joint Sea Patrols: 2

Joint Land Patrols: 4

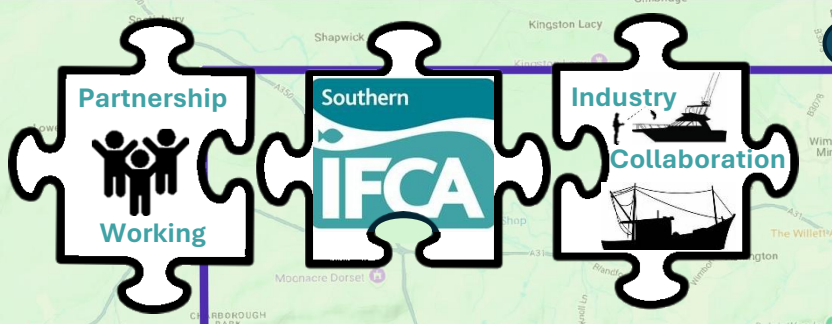
Drone flights: 28

Sea Patrols: 72

Boarding inspections: 66







### Poole Harbour Dredge Permit Byelaw Permit Condition Review Consultation

A review of the permit conditions under the PHDPB took place, focused on developing a Management & Control Plan which included an On-Site Monitoring Programme, an In-Season Monitoring Programme & and SPA Monitoring Programme for the fishery. A consultation with permit holders was held during December and January.

**Engagement relevant to BCP**

All data for FY 2024-2025

### Shellfish Classification

Southern IFCA continue to facilitate BCP Council and the FSA with Shellfish classification and water sampling, providing a marine platform and appropriate staff resource to carry out monthly work across 10 sample sites in Poole Harbour. Mussel samples are destined for the UKHSA laboratory for analysis, with biotoxin water and shellfish samples collected and sent to CEFAS for testing

### Meeting with Poole MP N Duncan-Jordan

To discuss the importance of the Poole Harbour wild and aquaculture fisheries and water quality.

### Poole Harbour Dredge Permit Byelaw Pre-Season Meeting

### Poole Harbour Watch

### Southcoast Fisherman's Council

### Poole and District Fishermen's Association

### Poole Harbour Steering Group

### Poole & District Sea Angling Association

### Regional Fisheries Group VIIId

### Professional Boatman's Association

### Seabream Review Coastal Engagement

To help inform the development of the above-named review, engagement sessions were held along the coast.

### Fisheries Management Plans

Southern IFCA have continued to input to the FMP process through provision of information & engagement opportunities to the community and input to the drafting (T3 & T4) and implementation processes (T1 & T2).

### Defra Several/Regulating Orders Consultation

Southern IFCA responded to a Defra consultation on the implementation of cost recovery for Several & Regulating Orders. Input was sought from aquaculture operators in Poole and a response drafted outlining the importance of the industry in the Harbour, the sustainable management delivered by Southern IFCA and concerns over implications from the introduction of a cost recovery scheme.

### Fin Vision Fisheries Industry Science Partnership Project

As project partner, Southern IFCA facilitated exploratory work relating to camera observations of juvenile fish and helped to promote citizen science projects for the angling community, focussing on species ID.

### Angling for Sustainability Fisheries Industry Science Partnership Project

Southern IFCA joined the project team for 8 days tagging black seabream and elasmobranch.

Marine Licensing Applications:

Response	Count
No comment	5
Comment required	6
<b>Total</b>	<b>11</b>

Responses requiring comment relevant to: Construction (5)