

Southern Inshore Fisheries and Conservation Authority Byelaw Booklet





Contact details

Tel/Fax: 01202 721373

Email: enquiries@southern-ifca.gov.uk

Web: southern-ifca.gov.uk



The IFCA Vision

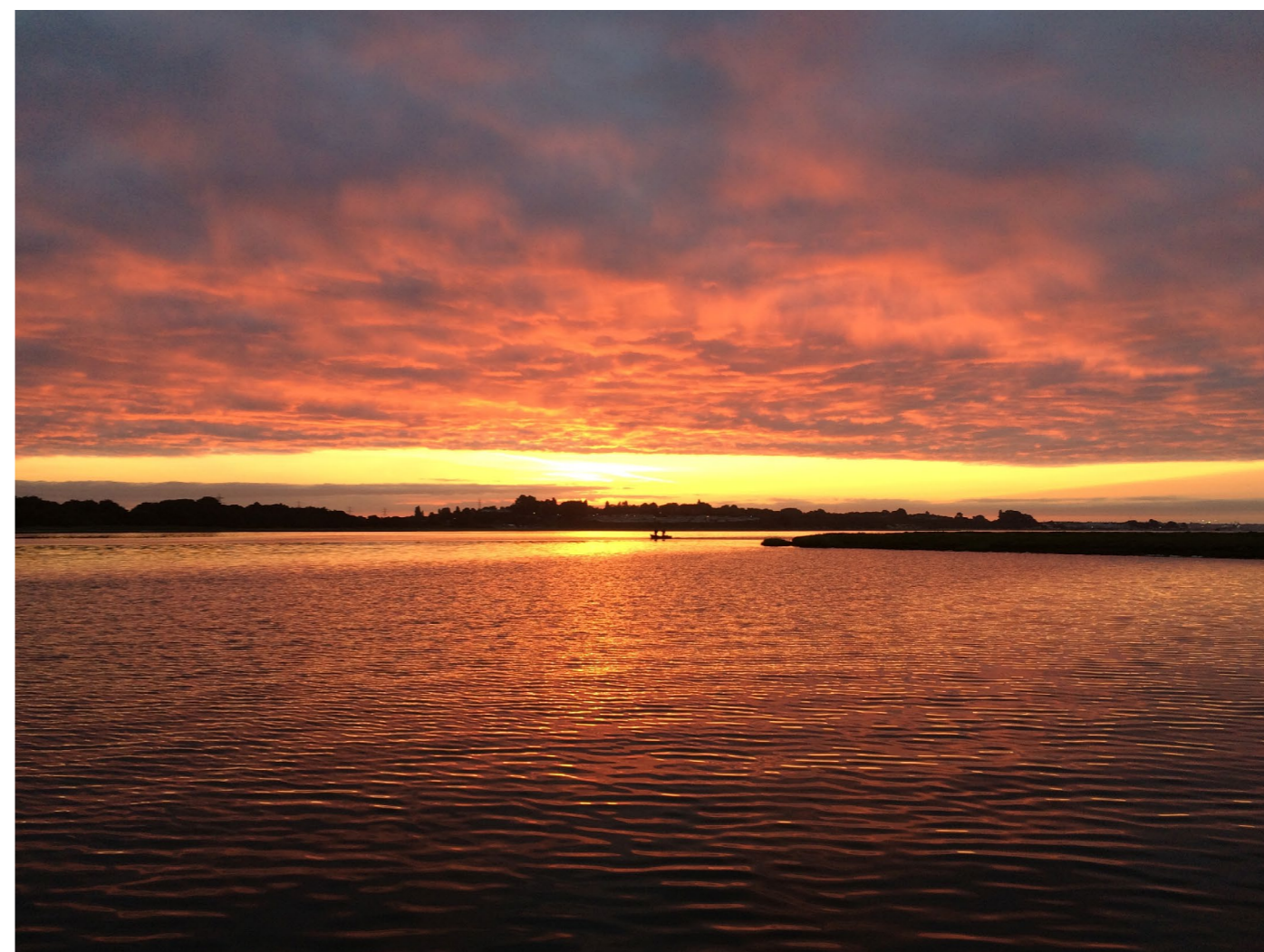
Inshore Fisheries and Conservation Authorities will lead, champion and manage a sustainable marine environment and inshore fisheries, by successfully securing the right balance between social, environmental and economic benefits to ensure healthy seas, sustainable fisheries and a viable industry.

Index

Click on a title to
go to that page 

Bay Closing Lines	06
Preface	07
Byelaws	
Bottom Towed Fishing Gear Byelaw 2016	09
Cockles	28
Electric Current	29
Fishing for Oysters, Mussels and Clams	29
Fishing Under Mechanical Power - Closed Area	30
Foul Hooking	31
Minimum Conservation Reference Size	31
Mussels	37
Net Fishing	37
Oysters Close Season	60
Oyster Dredges	60
Oysters	61
Periwinkles	61
Poole Harbour - Prawns Close Season	62
Poole Harbour Dredge Permit Byelaw	63
Poole Harbour Shellfish Hand Gathering Byelaw	66
Prohibition of Gathering (Sea Fisheries Resources) in Seagrass Beds	70
Protection of Berried (Egg Bearing) Lobsters	84

Redeposit of Shellfish	84
Scallop Fishing Byelaw 2019	85
Solent Dredge Permit Byelaw	88
Temporary Closure of Shellfish Beds	97
Vessels used in Fishing Byelaw 2012	97
Vessels Used in Fishing for Sale	99



Bay closing lines



Weymouth Bay

From:
50° 32.58"N 2° 24.50"W
(Vicinity Grove Point)

To:
50° 37.04"N 2° 15.31"W
(Approx. 900 metres West of Lulworth Cove)

Poole Bay

From:
50° 35.37"N 1° 56.59"W
(Durlston Head)

To:
50° 39.35"N 1° 34.41"W
(Sun Corner)

East Wight

From:
50° 36.00"N 1° 10.42"W
(Church Rocks)

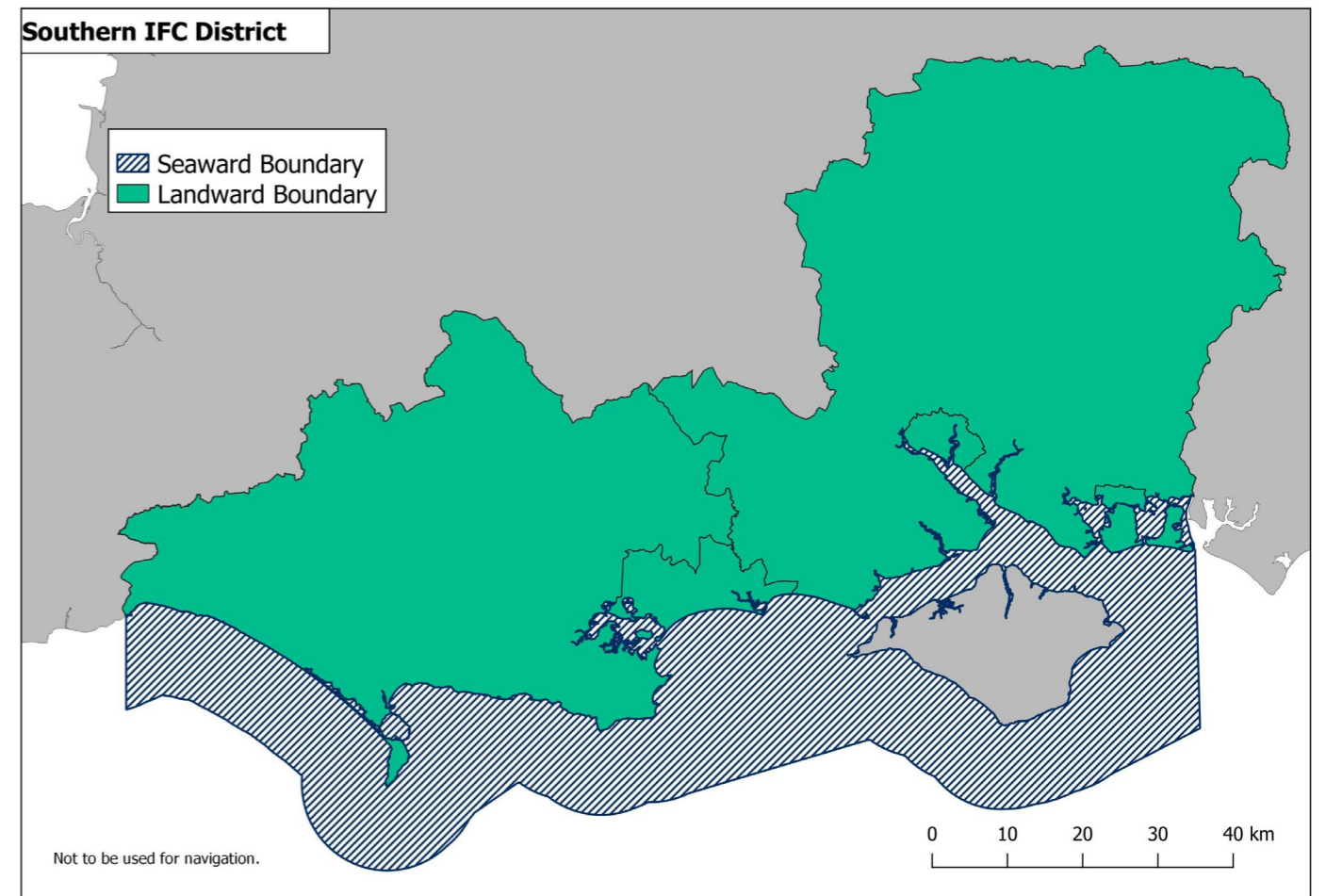
To:
50° 43.03"N 0° 47.39"W
(Approx. 350 metres south of Selsey Bill)

Preface

The Southern IFCA District extends within the County Boundaries of Dorset, Hampshire and the Isle of Wight and six miles from 1983 Baselines, including Bay Closing Lines within the boundaries of:

Western Boundary: a line joining Point 1 50° 43.07' N, 2° 56.78' W to Point 2 50° 36.36' N, 2° 56.78' W.

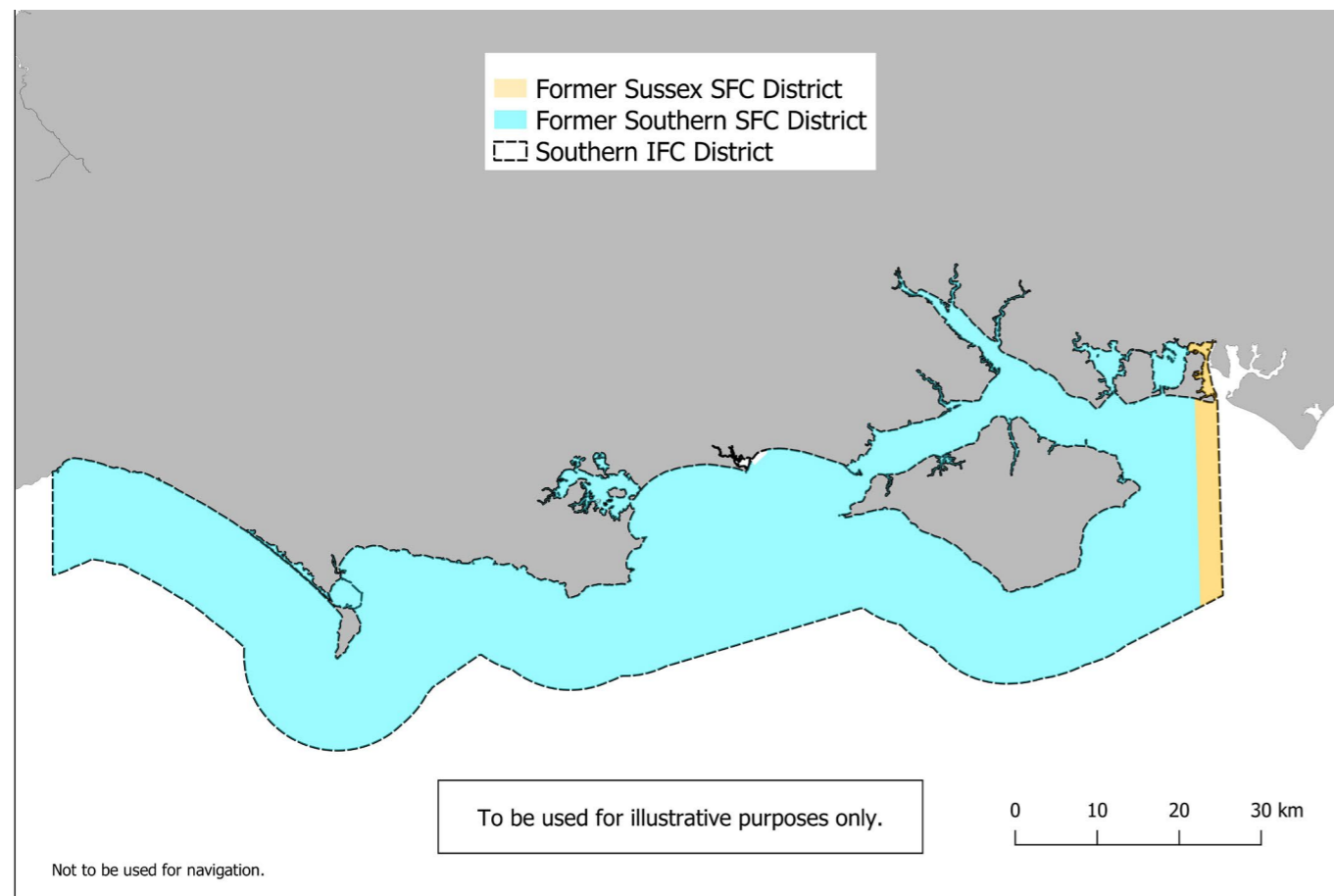
Eastern Boundary: a line joining Point 3 50° 46.62' N, 0° 55.92' W to Point 4 50° 33.93' N, 0° 55.92' W.



Section 6 of the Marine and Coastal Access Act 2009 (Transitional and Saving Provisions) Order 2011 transferred the byelaws made by the Southern Sea Fisheries Committee (SSFC) to the Southern IFCA for those parts of the District that were previously regulated by the SSFC. The Southern IFC District was extended from that of the SSFC to include areas that were previously regulated by the Sussex Sea Fisheries Committee and the Environment Agency. All relevant byelaws were transferred to the Southern IFCA for those parts of the District that were previously regulated by those bodies.

The Southern IFCA also has byelaws which were created under the IFCA in exercise of its powers under sections 155 and 156 of the Marine and Coastal Access Act 2009.

Unless otherwise stated, each byelaw applies to the extent of the Southern IFC District. The Southern Sea Fisheries Committee Legacy Byelaws only apply in that part of the Southern IFCA District formerly regulated by the Southern SFC, and therefore, do not apply in that part of the Southern IFCA District that was formerly regulated by the Sussex SFC.



The information provided should not be used as a definitive statement of current regulations. Original byelaws are held at the Authority's office and copies are available on request.

A number of Southern IFCA's byelaws, specifically those focused on gear restrictions, have been included in Seafish's Kingfisher Fishing Restrictions tool. The extent of these restrictions can be viewed on the [Kingfisher interactive map https://kingfisherrestrictions.org >](https://kingfisherrestrictions.org)

Byelaws

Bottom Towed Fishing Gear Byelaw 2016

The Authority for the Southern Inshore Fisheries and Conservation District, in exercise of the powers conferred by sections 155 and 156 of the Marine and Coastal Access Act 2009 hereby makes the following byelaw for that District.

Definitions

- (1) In this byelaw:
- "All positions given by means of coordinate are defined on World Geodetic system 1984 Datum (WGS84);
 - "the Authority" means the Southern Inshore Fisheries and Conservation Authority as defined in Articles 2 and 4 of the Southern Inshore Fisheries and Conservation Order 2010 (SI 2010 No 2198);
 - "bottom towed fishing gear" means any fishing gear which is capable of being pulled or pushed along the seabed;
 - "the District" means the Southern Inshore Fisheries and Conservation District as defined in Articles 2 and 3 of the Southern Inshore Fisheries and Conservation Order 2010;
 - "the prohibited areas" means the areas defined in the Schedule;

Prohibition

- A person must not, subject to paragraph (4), use bottom towed fishing gear within a prohibited area.
- A person must not, subject to paragraph (4), use a vessel carrying bottom towed fishing gear while transiting through a prohibited area unless all parts of that gear are inboard and above the sea.

Exceptions

- (4) Paragraphs (2) and (3) do not apply to any person committing an act which would otherwise constitute an offence against this byelaw, if that act was carried out in accordance with a written dispensation issued by the Authority under paragraphs (5) and (6).
- (5) A written dispensation may authorise:
- an act undertaken for scientific, stocking or breeding purposes; or
 - the dredging of mussels for the purpose of relaying.
- (6) A written dispensation:
- may be issued subject to conditions; and
 - unless revoked by the Authority, shall expire on the date stated in the written dispensation.

Schedule

Definition of Prohibited Areas

Area 1 - Chichester Harbour

The area enclosed by a line drawn from:

Point 1 (50 Degrees 49.030 minutes North, 000 Degrees 57.295 minutes West) to
 Point 2 (50 Degrees 49.035 minutes North, 000 Degrees 56.921 minutes West) to
 Point 3 (50 Degrees 48.320 minutes North, 000 Degrees 56.647 minutes West) to
 Point 4 (50 Degrees 48.209 minutes North, 000 Degrees 56.996 minutes West) to
 Point 5 (50 Degrees 48.273 minutes North, 000 Degrees 57.473 minutes West)
 From point 5 along the coast at the level of mean high water spring tide to
 Point 6 (50 Degrees 48.175 minutes North, 000 Degrees 58.000 minutes West) to
 Point 7 (50 Degrees 48.410 minutes North, 000 Degrees 57.880 minutes West)
 From point 7 along the coast at the level of mean high water spring tide to
 Point 8 (50 Degrees 48.588 minutes North, 000 Degrees 58.038 minutes West) to
 Point 9 (50 Degrees 48.650 minutes North, 000 Degrees 58.040 minutes West)
 From point 9 along the coast at the level of mean high water spring tide to point 1

Area 2 - Chichester Harbour

Point 10 (50 Degrees 47.803 minutes North, 000 Degrees 57.392 minutes West) to
 Point 11 (50 Degrees 47.664 minutes North, 000 Degrees 56.579 minutes West) to
 Point 12 (50 Degrees 47.200 minutes North, 000 Degrees 56.590 minutes West)
 From point 12 along the coast at the level of mean high water spring tide to
 Point 13 (50 Degrees 46.991 minutes North, 000 Degrees 57.058 minutes West) to
 Point 14 (50 Degrees 47.058 minutes North, 000 Degrees 57.072 minutes West)
 From point 14 along the coast at the level of mean high water spring tide to
 Point 15 (50 Degrees 47.376 minutes North, 000 Degrees 57.410 minutes West) to
 Point 16 (50 Degrees 47.622 minutes North, 000 Degrees 57.337 minutes West)
 From point 16 along the coast at the level of mean high water spring tide to point 10

Area 3 - Langstone Harbour

The area enclosed by a line drawn from:

Point 17 (50 Degrees 50.635 minutes North, 001 Degrees 00.544 minutes West) to
 Point 18 (50 Degrees 50.331 minutes North, 001 Degrees 00.766 minutes West) to
 Point 19 (50 Degrees 50.031 minutes North, 001 Degrees 00.121 minutes West) to
 Point 20 (50 Degrees 49.633 minutes North, 000 Degrees 59.942 minutes West) to
 Point 21 (50 Degrees 49.264 minutes North, 001 Degrees 00.090 minutes West) to
 Point 22 (50 Degrees 49.264 minutes North, 001 Degrees 01.237 minutes West) to
 Point 23 (50 Degrees 48.937 minutes North, 001 Degrees 01.267 minutes West) to
 Point 24 (50 Degrees 48.840 minutes North, 001 Degrees 01.369 minutes West) to
 Point 25 (50 Degrees 48.711 minutes North, 001 Degrees 01.599 minutes West) to
 Point 26 (50 Degrees 48.711 minutes North, 001 Degrees 02.375 minutes West)
 From point 26 along the coast at the level of mean high water spring tide to
 Point 27 (50 Degrees 50.006 minutes North, 001 Degrees 03.280 minutes West) to
 Point 28 (50 Degrees 50.028 minutes North, 001 Degrees 03.253 minutes West)
 From point 28 along the coast at the level of mean high water spring tide to point 17

Area 4 - Langstone Harbour

Point 29 (50 Degrees 47.781 minutes North, 001 Degrees 01.510 minutes West) to
 Point 30 (50 Degrees 48.140 minutes North, 001 Degrees 01.450 minutes West) to
 Point 31 (50 Degrees 48.600 minutes North, 001 Degrees 00.360 minutes West) to
 Point 32 (50 Degrees 48.453 minutes North, 001 Degrees 00.098 minutes West) to
 Point 33 (50 Degrees 48.782 minutes North, 000 Degrees 59.649 minutes West) to
 Point 34 (50 Degrees 48.880 minutes North, 000 Degrees 59.291 minutes West) to
 Point 35 (50 Degrees 48.820 minutes North, 000 Degrees 59.149 minutes West)
 From point 35 along the coast at the level of mean high water spring tide to point 29

Area 5 - Langstone Harbour

The area enclosed by a line drawn from:

Point 36 (50 Degrees 49.515 minutes North, 000 Degrees 59.104 minutes West) to
 Point 37 (50 Degrees 49.437 minutes North, 000 Degrees 59.165 minutes West) to
 Point 38 (50 Degrees 49.440 minutes North, 000 Degrees 59.314 minutes West) to
 Point 39 (50 Degrees 49.495 minutes North, 000 Degrees 59.456 minutes West) to
 Point 40 (50 Degrees 49.609 minutes North, 000 Degrees 59.418 minutes West) to
 Point 41 (50 Degrees 49.663 minutes North, 000 Degrees 59.367 minutes West) to
 Point 42 (50 Degrees 49.731 minutes North, 000 Degrees 59.246 minutes West) to
 Point 43 (50 Degrees 49.842 minutes North, 000 Degrees 59.961 minutes West) to
 Point 44 (50 Degrees 49.703 minutes North, 000 Degrees 59.004 minutes West)
 From point 44 along the coast at the level of mean high water spring tide to point 36

Area 6 - Portsmouth Harbour

Point 45 (50 Degrees 50.670 minutes North, 001 Degrees 09.399 minutes West)
 From point 45 along the coast at the level of mean high water spring tide to
 Point 46 (50 Degrees 50.566 minutes North, 001 Degrees 09.270 minutes West) to
 Point 47 (50 Degrees 50.426 minutes North, 001 Degrees 09.699 minutes West) to
 Point 48 (50 Degrees 50.500 minutes North, 001 Degrees 09.775 minutes West)
 From point 48 along the coast at the level of mean high water spring tide to point 45

Area 7 - Portsmouth Harbour

The area enclosed by a line drawn from:

Point 49 (50 Degrees 50.255 minutes North, 001 Degrees 09.627 minutes West) to
 Point 50 (50 Degrees 50.300 minutes North, 001 Degrees 09.685 minutes West) to
 Point 51 (50 Degrees 50.355 minutes North, 001 Degrees 09.580 minutes West) to
 Point 52 (50 Degrees 50.344 minutes North, 001 Degrees 09.533 minutes West)
 From point 52 along the base of the jetty until the southerly end of the jetty, then along the coast at
 the level of mean high water spring tide to point 49

Area 8 - Portsmouth Harbour

The area enclosed by a line drawn from:

Point 53 (50 Degrees 50.210 minutes North, 001 Degrees 09.295 minutes West) to
 Point 54 (50 Degrees 50.289 minutes North, 001 Degrees 09.168 minutes West) to
 Point 55 (50 Degrees 50.178 minutes North, 001 Degrees 09.031 minutes West) to
 Point 56 (50 Degrees 50.124 minutes North, 001 Degrees 09.127 minutes West)
 From point 56 along the coast at the level of mean high water spring tide to point 53

Area 9 - Portsmouth Harbour

The area enclosed by a line drawn from:

Point 57 (50 Degrees 50.185 minutes North, 001 Degrees 07.532 minutes West) to
 Point 58 (50 Degrees 50.064 minutes North, 001 Degrees 07.703 minutes West) to
 Point 59 (50 Degrees 49.935 minutes North, 001 Degrees 07.324 minutes West) to
 Point 60 (50 Degrees 49.847 minutes North, 001 Degrees 07.426 minutes West) to
 Point 61 (50 Degrees 49.986 minutes North, 001 Degrees 07.809 minutes West) to
 Point 62 (50 Degrees 49.766 minutes North, 001 Degrees 08.094 minutes West) to
 Point 63 (50 Degrees 49.853 minutes North, 001 Degrees 08.395 minutes West) to
 Point 64 (50 Degrees 50.370 minutes North, 001 Degrees 08.970 minutes West) to
 Point 65 (50 Degrees 50.434 minutes North, 001 Degrees 08.766 minutes West)
 From point 65 along the coast at the level of mean high water spring tide to point 57

Area 10 - Portsmouth Harbour

The area enclosed by a line drawn from:

Point 66 (50 Degrees 49.793 minutes North, 001 Degrees 08.860 minutes West) to
 Point 67 (50 Degrees 49.700 minutes North, 001 Degrees 08.681 minutes West) to
 Point 68 (50 Degrees 49.616 minutes North, 001 Degrees 08.827 minutes West) to
 Point 69 (50 Degrees 49.720 minutes North, 001 Degrees 08.964 minutes West) to point 66

Area 11 - Portsmouth Harbour

The area enclosed by a line drawn from:

Point 70 (50 Degrees 49.514 minutes North, 001 Degrees 07.449 minutes West) to
 Point 71 (50 Degrees 49.422 minutes North, 001 Degrees 07.315 minutes West) to
 Point 72 (50 Degrees 49.244 minutes North, 001 Degrees 07.386 minutes West) to
 Point 73 (50 Degrees 49.219 minutes North, 001 Degrees 07.585 minutes West) to
 Point 74 (50 Degrees 49.384 minutes North, 001 Degrees 07.929 minutes West) to point 70

Area 12 - Southampton Water

The area enclosed by a line drawn from:

Point 75 (50 Degrees 49.295 minutes North, 001 Degrees 15.222 minutes West) to
 Point 76 (50 Degrees 49.166 minutes North, 001 Degrees 15.386 minutes West) to
 Point 77 (50 Degrees 49.575 minutes North, 001 Degrees 16.470 minutes West) to
 Point 78 (50 Degrees 49.740 minutes North, 001 Degrees 16.333 minutes West)
 From point 78 along the coast at the level of mean high water spring tide to point 75

Area 13 - Southampton Water

The area enclosed by a line drawn from:

Point 79 (50 Degrees 48.910 minutes North, 001 Degrees 18.557 minutes West) to
 Point 80 (50 Degrees 50.213 minutes North, 001 Degrees 20.155 minutes West)
 From point 80 along the coast at the level of mean high water spring tide to point 79

Area 14 - Southampton Water

The area enclosed by a line drawn from:

Point 81 (50 Degrees 50.762 minutes North, 001 Degrees 20.979 minutes West) to
 Point 82 (50 Degrees 51.901 minutes North, 001 Degrees 23.316 minutes West)
 From point 82 along the coast at the level of mean high water to spring tide to point 81

Area 15 - Southampton Water

The area that lies below mean high water springs and west of a line drawn from:

Point 83 (50 Degrees 54.097 minutes North, 001 Degrees 27.122 minutes West) to
 Point 84 (50 Degrees 54.133 minutes North, 001 Degrees 27.119 minutes West) to
 Point 85 (50 Degrees 54.290 minutes North, 001 Degrees 27.587 minutes West) to
 Point 86 (50 Degrees 54.287 minutes North, 001 Degrees 27.875 minutes West) to
 Point 87 (50 Degrees 54.424 minutes North, 001 Degrees 27.900 minutes West) to
 Point 88 (50 Degrees 54.614 minutes North, 001 Degrees 28.103 minutes West) to
 Point 89 (50 Degrees 54.687 minutes North, 001 Degrees 28.027 minutes West)
 From point 89 along the coast at the level of mean high water to spring tide to point 83

Area 16 - The Hamble

The Part of the District that lies below mean high water springs and north of a line drawn from:

Point 90 (50 Degrees 52.380 minutes North, 001 Degrees 18.800 minutes West) to
 Point 91 (50 Degrees 52.380 minutes North, 001 Degrees 18.330 minutes West)

Area 17 - The Solent

The area enclosed by a line drawn from:

Point 92 (50 Degrees 48.595 minutes North, 001 Degrees 18.995 minutes West) to
 Point 93 (50 Degrees 48.384 minutes North, 001 Degrees 18.602 minutes West) to
 Point 94 (50 Degrees 47.952 minutes North, 001 Degrees 19.486 minutes West) to
 Point 95 (50 Degrees 47.802 minutes North, 001 Degrees 19.899 minutes West) to
 Point 96 (50 Degrees 47.840 minutes North, 001 Degrees 19.950 minutes West)
 From point 96 along the coast at the level of mean high water spring tide to point 92

Area 18 - The Solent

The area enclosed by a line drawn from:

Point 97 (50 Degrees 47.097 minutes North, 001 Degrees 22.017 minutes West) to

Point 98 (50 Degrees 46.698 minutes North, 001 Degrees 21.389 minutes West) to

Point 99 (50 Degrees 46.521 minutes North, 001 Degrees 22.260 minutes West) to point 97

Area 19 - Lymington

The area enclosed by a line drawn from:

Point 100 (50 Degrees 45.756 minutes North, 001 Degrees 26.754 minutes West) to

Point 101 (50 Degrees 45.189 minutes North, 001 Degrees 28.936 minutes West) to

Point 102 (50 Degrees 43.783 minutes North, 001 Degrees 32.448 minutes West)

From point 102 along the coast at the level of mean high water spring tide to point 100

Area 20 - Keyhaven

The area enclosed by a line drawn from:

Point 103 (50 Degrees 43.783 minutes North, 001 Degrees 32.448 minutes West) to

Point 104 (50 Degrees 42.860 minutes North, 001 Degrees 33.300 minutes West)

From point 104 along the coast at the level of mean high water spring tide to point 103

Area 21 - The Isle of Wight

The area enclosed by a line drawn from:

Point 105 (50 Degrees 42.418 minutes North, 001 Degrees 31.205 minutes West) to

Point 106 (50 Degrees 42.477 minutes North, 001 Degrees 31.199 minutes West) to

Point 107 (50 Degrees 42.511 minutes North, 001 Degrees 29.844 minutes West) to

Point 108 (50 Degrees 42.726 minutes North, 001 Degrees 28.544 minutes West) to

Point 109 (50 Degrees 42.956 minutes North, 001 Degrees 27.637 minutes West) to

Point 110 (50 Degrees 42.900 minutes North, 001 Degrees 27.520 minutes West)

From point 110 along the coast at the level of mean high water spring tide to

point 105 including the waters within the River Yar below mean high water springs

Area 22 - The Isle of Wight

That part of the District in Newtown Harbour that lies below mean high water springs and within a line from:

Point 111 (50 Degrees 43.429 minutes North, 001 Degrees 24.712 minutes West) to

Point 112 (50 Degrees 43.436 minutes North, 001 Degrees 24.610 minutes West)

Area 23 - The Isle of Wight

The area enclosed by a line drawn from:

Point 113 (50 Degrees 44.280 minutes North, 001 Degrees 21.795 minutes West) to

Point 114 (50 Degrees 44.389 minutes North, 001 Degrees 21.769 minutes West) to

Point 115 (50 Degrees 44.483 minutes North, 001 Degrees 21.552 minutes West) to

Point 116 (50 Degrees 44.550 minutes North, 001 Degrees 21.108 minutes West) to

Point 117 (50 Degrees 44.470 minutes North, 001 Degrees 21.010 minutes West)

From point 117 along the coast at the level of mean high water spring tide to point 113

Area 24 - The Isle of Wight

The part of the district that lies below mean high water springs and South of a line drawn from:

Point 118 (50 Degrees 44.962 minutes North, 001 Degrees 17.588 minutes West) to

Point 119 (50 Degrees 44.962 minutes North, 001 Degrees 17.419 minutes West)

Area 25 - The Isle of Wight

The area enclosed by a line drawn from:

Point 120 (50 Degrees 45.779 minutes North, 001 Degrees 17.300 minutes West) along the base of the breakwater until the northerly end of the breakwater to

Point 121 (50 Degrees 45.987 minutes North, 001 Degrees 17.835 minutes West) to

Point 122 (50 Degrees 46.172 minutes North, 001 Degrees 17.128 minutes West) to

Point 123 (50 Degrees 45.980 minutes North, 001 Degrees 16.640 minutes West)

From point 123 along the coast at the level of mean high water spring tide to point 120

Area 26 - The Isle of Wight

The area enclosed by a line drawn from:

Point 124 (50 Degrees 45.950 minutes North, 001 Degrees 16.340 minutes West) to
 Point 125 (50 Degrees 45.988 minutes North, 001 Degrees 16.311 minutes West) to
 Point 126 (50 Degrees 45.975 minutes North, 001 Degrees 16.089 minutes West) to
 Point 127 (50 Degrees 44.472 minutes North, 001 Degrees 12.484 minutes West) to
 Point 128 (50 Degrees 44.346 minutes North, 001 Degrees 12.409 minutes West) to
 Point 129 (50 Degrees 44.261 minutes North, 001 Degrees 12.815 minutes West)

From point 129 along the coast at the level of mean high water spring tide to
 point 124 including those waters within Kings Quay

Area 27 - The Isle of Wight

The area enclosed by a line drawn from:

Point 130 (50 Degrees 44.000 minutes North, 001 Degrees 10.372 minutes West) to
 Point 131 (50 Degrees 44.343 minutes North, 001 Degrees 10.582 minutes West) to
 Point 132 (50 Degrees 44.576 minutes North, 001 Degrees 08.744 minutes West) to
 Point 133 (50 Degrees 43.900 minutes North, 001 Degrees 09.200 minutes West)

From point 133 along the coast at the level of mean high water spring tide to point 130

Area 28 - The Isle of Wight

The area enclosed by a line drawn from:

Point 134 (50 Degrees 42.544 minutes North, 001 Degrees 06.155 minutes West) to
 Point 135 (50 Degrees 42.589 minutes North, 001 Degrees 06.061 minutes West) to
 Point 136 (50 Degrees 42.434 minutes North, 001 Degrees 05.822 minutes West) to
 Point 137 (50 Degrees 42.380 minutes North, 001 Degrees 05.900 minutes West)

From point 137 along the coast at the level of mean high water spring tide to point 134

Area 29 - The Isle of Wight

The area enclosed by a line drawn from:

Point 138 (50 Degrees 41.696 minutes North, 001 Degrees 05.255 minutes West) to
 Point 139 (50 Degrees 41.747 minutes North, 001 Degrees 05.229 minutes West) to
 Point 140 (50 Degrees 41.988 minutes North, 001 Degrees 05.775 minutes West) to
 Point 141 (50 Degrees 42.089 minutes North, 001 Degrees 05.728 minutes West) to
 Point 142 (50 Degrees 42.071 minutes North, 001 Degrees 05.107 minutes West) to
 Point 143 (50 Degrees 42.271 minutes North, 001 Degrees 05.050 minutes West) to
 Point 144 (50 Degrees 42.247 minutes North, 001 Degrees 05.132 minutes West) to
 Point 145 (50 Degrees 42.336 minutes North, 001 Degrees 05.185 minutes West) to
 Point 146 (50 Degrees 42.359 minutes North, 001 Degrees 05.058 minutes West) to
 Point 147 (50 Degrees 42.301 minutes North, 001 Degrees 05.020 minutes West) to
 Point 148 (50 Degrees 42.392 minutes North, 001 Degrees 04.288 minutes West) to
 Point 149 (50 Degrees 42.385 minutes North, 001 Degrees 04.097 minutes West) to
 Point 150 (50 Degrees 42.233 minutes North, 001 Degrees 03.579 minutes West) to
 Point 151 (50 Degrees 42.251 minutes North, 001 Degrees 03.458 minutes West) to
 Point 152 (50 Degrees 42.316 minutes North, 001 Degrees 03.454 minutes West) to
 Point 153 (50 Degrees 42.367 minutes North, 001 Degrees 03.200 minutes West) to
 Point 154 (50 Degrees 42.328 minutes North, 001 Degrees 02.418 minutes West) to
 Point 155 (50 Degrees 41.856 minutes North, 001 Degrees 02.644 minutes West) to
 Point 156 (50 Degrees 41.119 minutes North, 001 Degrees 00.209 minutes West) to
 Point 157 (50 Degrees 40.053 minutes North, 000 Degrees 59.524 minutes West) to
 Point 158 (50 Degrees 39.762 minutes North, 000 Degrees 59.412 minutes West) to
 Point 159 (50 Degrees 39.756 minutes North, 000 Degrees 58.113 minutes West) to
 Point 160 (50 Degrees 35.310 minutes North, 001 Degrees 10.280 minutes West) to
 Point 161 (50 Degrees 33.224 minutes North, 001 Degrees 17.911 minutes West) to
 Point 162 (50 Degrees 38.739 minutes North, 001 Degrees 34.402 minutes West) to
 Point 163 (50 Degrees 38.865 minutes North, 001 Degrees 33.834 minutes West) to
 Point 164 (50 Degrees 37.992 minutes North, 001 Degrees 29.789 minutes West) to
 Point 165 (50 Degrees 38.161 minutes North, 001 Degrees 29.714 minutes West) to
 Point 166 (50 Degrees 38.535 minutes North, 001 Degrees 31.006 minutes West) to
 Point 167 (50 Degrees 39.770 minutes North, 001 Degrees 30.340 minutes West) to
 Point 168 (50 Degrees 39.127 minutes North, 001 Degrees 34.463 minutes West) to
 Point 169 (50 Degrees 39.482 minutes North, 001 Degrees 36.615 minutes West) to
 Point 170 (50 Degrees 39.616 minutes North, 001 Degrees 37.010 minutes West) to
 Point 171 (50 Degrees 39.689 minutes North, 001 Degrees 37.083 minutes West) to

Point 172 (50 Degrees 40.440 minutes North, 001 Degrees 34.090 minutes West)
From point 172 along the coast at the level of mean high water spring tide to point 138

Area 30 - The Isle of Wight

The area enclosed by a line drawn from:

Point 173 (50 Degrees 41.007 minutes North, 000 Degrees 58.438 minutes West) to
Point 174 (50 Degrees 40.615 minutes North, 000 Degrees 57.900 minutes West) to
Point 175 (50 Degrees 40.248 minutes North, 000 Degrees 57.781 minutes West) to
Point 176 (50 Degrees 40.290 minutes North, 000 Degrees 58.348 minutes West) to
Point 177 (50 Degrees 40.556 minutes North, 000 Degrees 58.500 minutes West) to point 173

Area 31 - Poole Harbour

The area enclosed by a line drawn from:

Point 178 (50 Degrees 42.270 minutes North, 001 Degrees 57.030 minutes West) to
Point 179 (50 Degrees 42.251 minutes North, 001 Degrees 56.921 minutes West) to
Point 180 (50 Degrees 42.197 minutes North, 001 Degrees 56.818 minutes West) to
Point 181 (50 Degrees 42.125 minutes North, 001 Degrees 56.780 minutes West) to
Point 182 (50 Degrees 42.045 minutes North, 001 Degrees 56.568 minutes West) to
Point 183 (50 Degrees 42.020 minutes North, 001 Degrees 56.555 minutes West) to
Point 184 (50 Degrees 41.999 minutes North, 001 Degrees 56.560 minutes West) to
Point 185 (50 Degrees 41.997 minutes North, 001 Degrees 56.630 minutes West) to
Point 186 (50 Degrees 42.024 minutes North, 001 Degrees 56.846 minutes West) to
Point 187 (50 Degrees 42.219 minutes North, 001 Degrees 57.120 minutes West) to point 178

Area 32 - Poole Harbour

The area enclosed by a line drawn from:

Point 188 (50 Degrees 41.842 minutes North, 001 Degrees 56.722 minutes West) to
Point 189 (50 Degrees 41.846 minutes North, 001 Degrees 56.658 minutes West) to
Point 190 (50 Degrees 41.829 minutes North, 001 Degrees 56.553 minutes West) to
Point 191 (50 Degrees 41.645 minutes North, 001 Degrees 56.515 minutes West) to
Point 192 (50 Degrees 41.577 minutes North, 001 Degrees 56.353 minutes West) to
Point 193 (50 Degrees 41.539 minutes North, 001 Degrees 56.351 minutes West) to
Point 194 (50 Degrees 41.456 minutes North, 001 Degrees 56.409 minutes West) to
Point 195 (50 Degrees 41.332 minutes North, 001 Degrees 56.652 minutes West) to
Point 196 (50 Degrees 41.371 minutes North, 001 Degrees 56.800 minutes West) to
Point 197 (50 Degrees 41.363 minutes North, 001 Degrees 56.820 minutes West) to
Point 198 (50 Degrees 41.383 minutes North, 001 Degrees 56.895 minutes West) to point 188

Area 33 - Poole Harbour

The area enclosed by a line drawn from:

Point 199 (50 Degrees 41.621 minutes North, 001 Degrees 56.286 minutes West) to
Point 200 (50 Degrees 41.627 minutes North, 001 Degrees 56.222 minutes West) to
Point 201 (50 Degrees 41.589 minutes North, 001 Degrees 56.190 minutes West) to
Point 202 (50 Degrees 41.542 minutes North, 001 Degrees 56.264 minutes West) to
Point 203 (50 Degrees 41.558 minutes North, 001 Degrees 56.311 minutes West) to
Point 204 (50 Degrees 41.589 minutes North, 001 Degrees 56.317 minutes West) to point 199

Area 34 - Poole Bay

The area enclosed by a line drawn from:

Point 205 (50 Degrees 41.729 minutes North, 001 Degrees 53.948 minutes West) to
Point 206 (50 Degrees 41.731 minutes North, 001 Degrees 52.370 minutes West) to
Point 207 (50 Degrees 40.646 minutes North, 001 Degrees 52.370 minutes West) to
Point 208 (50 Degrees 40.646 minutes North, 001 Degrees 53.948 minutes West) to point 205

Area 35 - Studland to Portland

The area enclosed by a line drawn from:

Point 209 (50 Degrees 38.583 minutes North, 001 Degrees 55.350 minutes West) to
 Point 210 (50 Degrees 38.667 minutes North, 001 Degrees 55.333 minutes West) to
 Point 211 (50 Degrees 38.667 minutes North, 001 Degrees 54.733 minutes West) to
 Point 212 (50 Degrees 36.467 minutes North, 001 Degrees 54.783 minutes West) to
 Point 213 (50 Degrees 36.000 minutes North, 001 Degrees 53.217 minutes West) to
 Point 214 (50 Degrees 35.583 minutes North, 001 Degrees 53.217 minutes West) to
 Point 215 (50 Degrees 35.083 minutes North, 001 Degrees 54.033 minutes West) to
 Point 216 (50 Degrees 33.133 minutes North, 001 Degrees 54.050 minutes West) to
 Point 217 (50 Degrees 29.850 minutes North, 002 Degrees 06.017 minutes West) to
 Point 218 (50 Degrees 31.462 minutes North, 002 Degrees 14.535 minutes West) to
 Point 219 (50 Degrees 33.393 minutes North, 002 Degrees 14.548 minutes West) to
 Point 220 (50 Degrees 33.870 minutes North, 002 Degrees 11.238 minutes West) to
 Point 221 (50 Degrees 33.772 minutes North, 002 Degrees 10.350 minutes West) to
 Point 222 (50 Degrees 33.985 minutes North, 002 Degrees 09.867 minutes West) to
 Point 223 (50 Degrees 34.642 minutes North, 002 Degrees 10.241 minutes West) to
 Point 224 (50 Degrees 34.855 minutes North, 002 Degrees 09.848 minutes West) to
 Point 225 (50 Degrees 36.098 minutes North, 002 Degrees 11.026 minutes West) to
 Point 226 (50 Degrees 34.620 minutes North, 002 Degrees 14.980 minutes West) to
 Point 227 (50 Degrees 34.674 minutes North, 002 Degrees 15.816 minutes West) to
 Point 228 (50 Degrees 34.058 minutes North, 002 Degrees 15.906 minutes West) to
 Point 229 (50 Degrees 34.067 minutes North, 002 Degrees 19.967 minutes West) to
 Point 230 (50 Degrees 37.917 minutes North, 002 Degrees 20.333 minutes West)
 From point 230 along the coast at the level of mean high water spring tide to point 209

Area 36 - Portland

The area enclosed by a line drawn from:

Point 231 (50 Degrees 32.533 minutes North, 002 Degrees 25.117 minutes West) to
 Point 232 (50 Degrees 31.400 minutes North, 002 Degrees 21.983 minutes West) to
 Point 233 (50 Degrees 30.690 minutes North, 002 Degrees 23.424 minutes West) to
 Point 234 (50 Degrees 30.761 minutes North, 002 Degrees 23.676 minutes West) to
 Point 235 (50 Degrees 30.330 minutes North, 002 Degrees 24.397 minutes West) to
 Point 236 (50 Degrees 30.219 minutes North, 002 Degrees 24.380 minutes West) to
 Point 237 (50 Degrees 29.683 minutes North, 002 Degrees 25.467 minutes West) to
 Point 238 (50 Degrees 29.000 minutes North, 002 Degrees 20.700 minutes West) to
 Point 239 (50 Degrees 28.412 minutes North, 002 Degrees 19.352 minutes West) to
 Point 240 (50 Degrees 28.254 minutes North, 002 Degrees 18.393 minutes West)
 From point 240 Southwest along the District boundary to
 Point 241 (50 Degrees 27.883 minutes North, 002 Degrees 18.757 minutes West) to
 Point 242 (50 Degrees 27.883 minutes North, 002 Degrees 26.000 minutes West) to
 Point 243 (50 Degrees 27.483 minutes North, 002 Degrees 26.033 minutes West) to
 Point 244 (50 Degrees 27.483 minutes North, 002 Degrees 27.917 minutes West) to
 Point 245 (50 Degrees 29.367 minutes North, 002 Degrees 28.817 minutes West) to
 Point 246 (50 Degrees 32.760 minutes North, 002 Degrees 27.677 minutes West) to
 Point 247 (50 Degrees 33.646 minutes North, 002 Degrees 29.087 minutes West) to
 Point 248 (50 Degrees 33.997 minutes North, 002 Degrees 28.494 minutes West) to
 Point 249 (50 Degrees 33.346 minutes North, 002 Degrees 27.457 minutes West) to
 Point 250 (50 Degrees 33.613 minutes North, 002 Degrees 26.960 minutes West) to
 From point 250 along the coast at the level of mean high water spring tide to point 231

Area 37 - The Fleet

The area enclosed by a line drawn from:

Point 251 (50 Degrees 35.990 minutes North, 002 Degrees 29.940 minutes West) to
 Point 252 (50 Degrees 35.860 minutes North, 002 Degrees 30.170 minutes West)
 From point 252 along the coast at the level of mean high water spring tide to
 Point 253 (50 Degrees 38.680 minutes North, 002 Degrees 35.510 minutes West) to
 Point 254 (50 Degrees 38.775 minutes North, 002 Degrees 35.410 minutes West)
 From point 254 along the coast at the level of mean high water spring tide to point 251

Area 38 - Stennis Ledges

The area enclosed by a line drawn from:

Point 255 (50 Degrees 35.193 minutes North, 002 Degrees 31.544 minutes West) to
 Point 256 (50 Degrees 33.462 minutes North, 002 Degrees 33.807 minutes West) to
 Point 257 (50 Degrees 32.960 minutes North, 002 Degrees 32.066 minutes West) to
 Point 258 (50 Degrees 34.294 minutes North, 002 Degrees 30.099 minutes West) to
 Point 259 (50 Degrees 34.661 minutes North, 002 Degrees 29.350 minutes West) to
 Point 260 (50 Degrees 35.487 minutes North, 002 Degrees 30.326 minutes West)

Area 39 - Lyme Bay

The area enclosed by a line drawn from:

Point 261 (50 Degrees 37.381 minutes North, 002 Degrees 35.632 minutes West) to
 Point 262 (50 Degrees 37.517 minutes North, 002 Degrees 34.400 minutes West) to
 Point 263 (50 Degrees 36.800 minutes North, 002 Degrees 33.199 minutes West) to
 Point 264 (50 Degrees 36.583 minutes North, 002 Degrees 34.093 minutes West)

Area 40 - Lyme Bay

The area enclosed by a line drawn from:

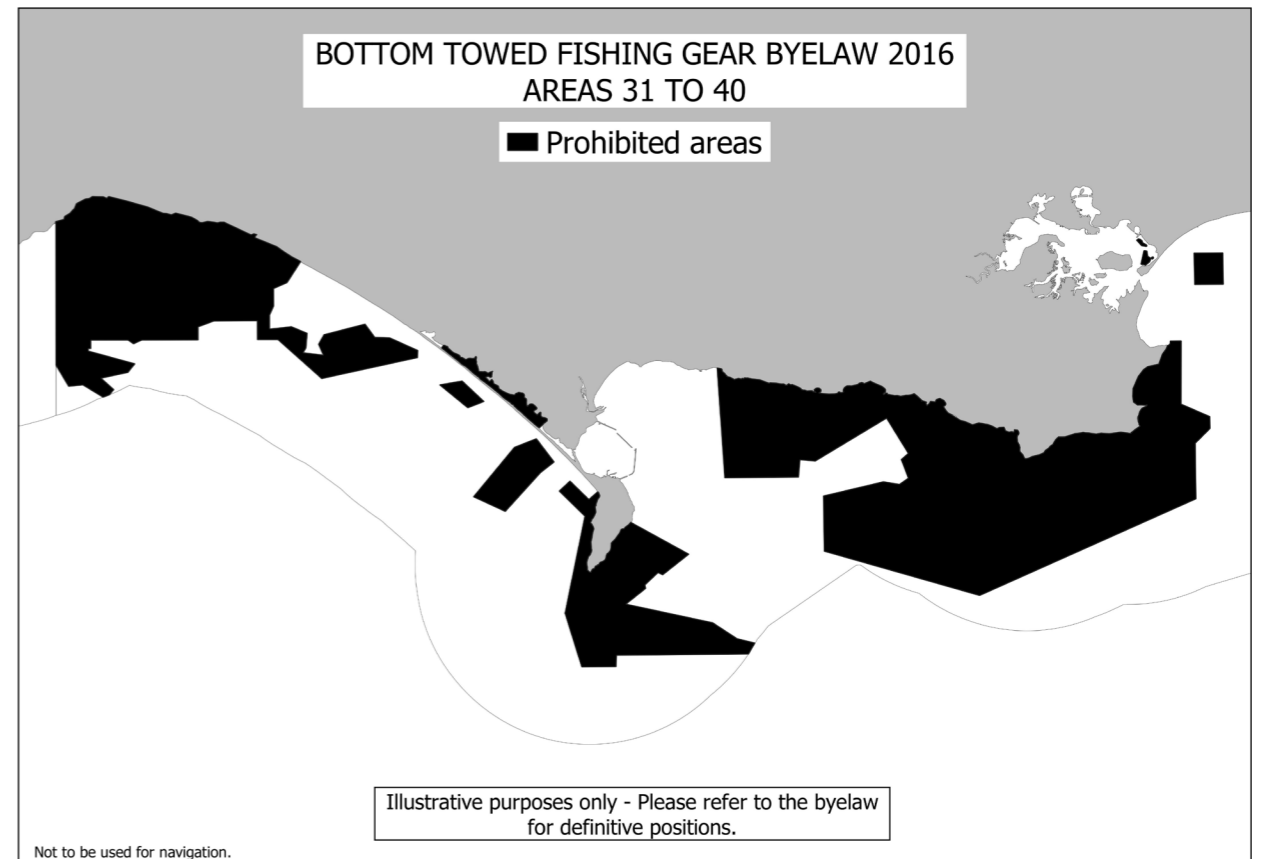
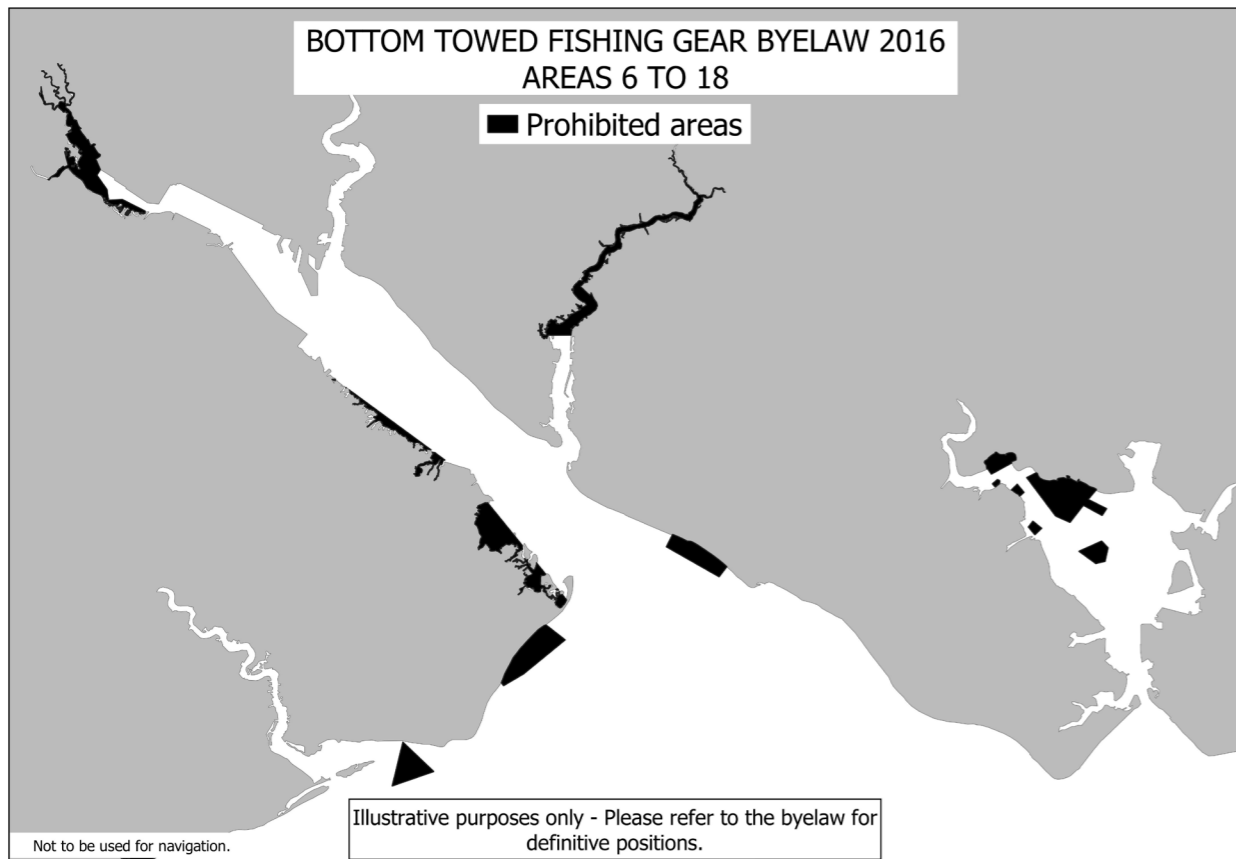
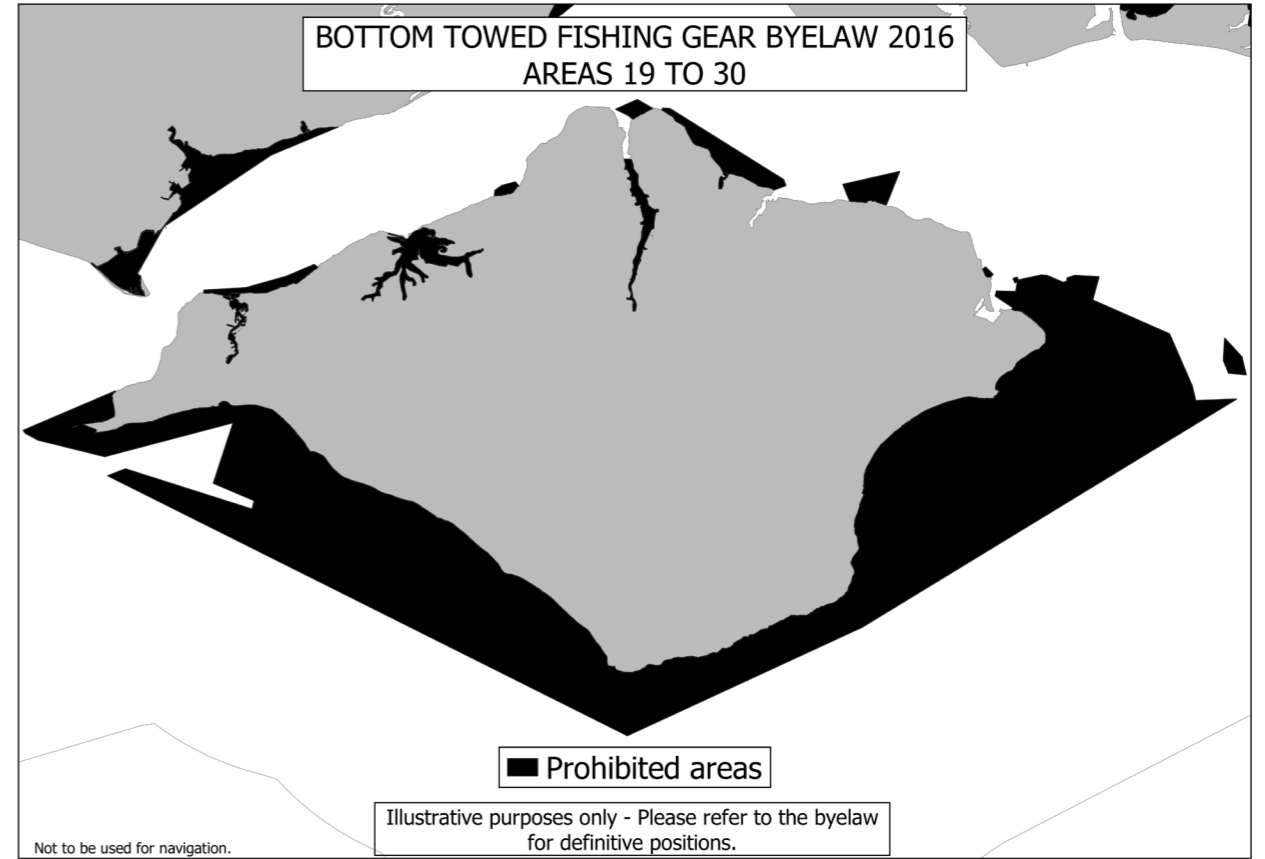
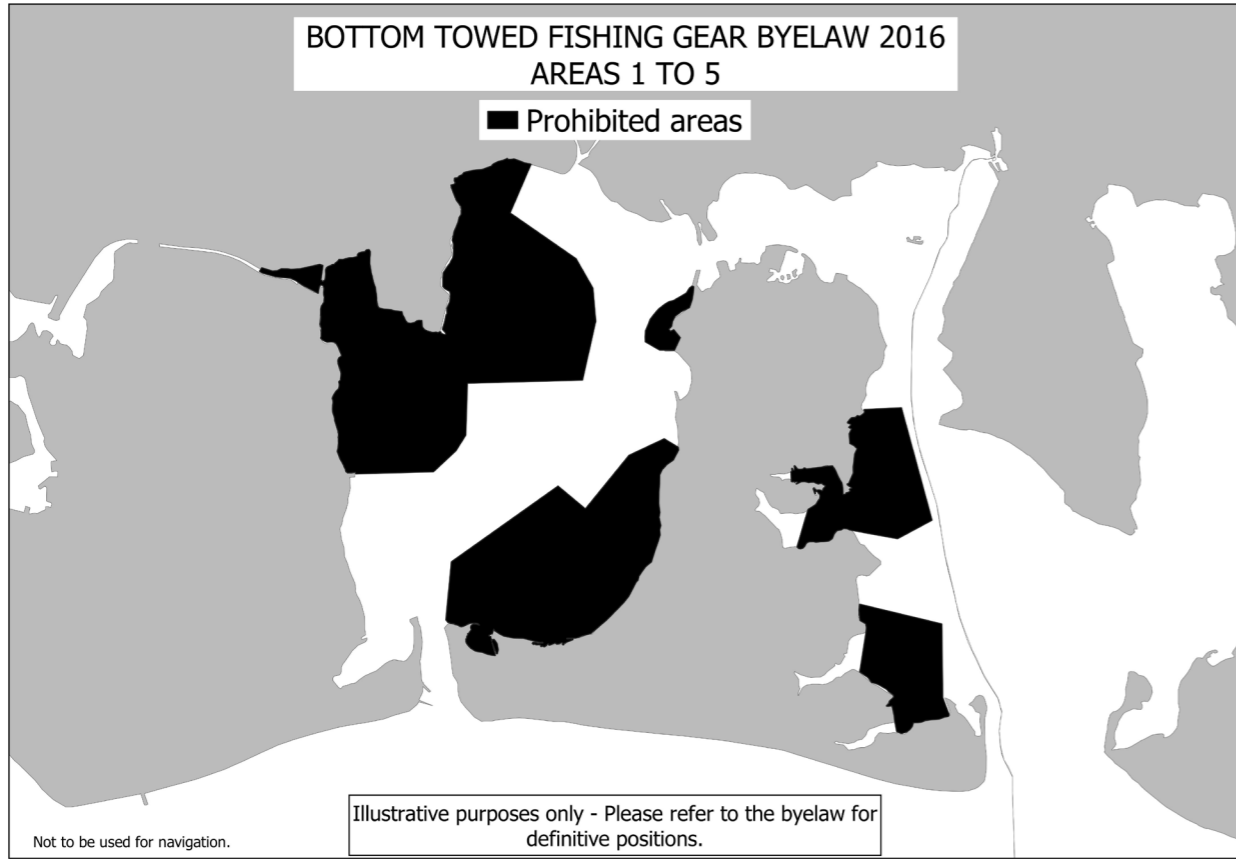
Point 265 (50 Degrees 41.740 minutes North, 002 Degrees 43.260 minutes West) to
 Point 266 (50 Degrees 41.000 minutes North, 002 Degrees 44.020 minutes West) to
 Point 267 (50 Degrees 40.791 minutes North, 002 Degrees 44.767 minutes West) to
 Point 268 (50 Degrees 40.180 minutes North, 002 Degrees 44.767 minutes West) to
 Point 269 (50 Degrees 39.859 minutes North, 002 Degrees 45.000 minutes West) to
 Point 270 (50 Degrees 39.373 minutes North, 002 Degrees 45.000 minutes West) to
 Point 271 (50 Degrees 39.393 minutes North, 002 Degrees 44.631 minutes West) to
 Point 272 (50 Degrees 39.452 minutes North, 002 Degrees 43.800 minutes West) to
 Point 273 (50 Degrees 39.219 minutes North, 002 Degrees 42.924 minutes West) to
 Point 274 (50 Degrees 38.704 minutes North, 002 Degrees 42.996 minutes West) to
 Point 275 (50 Degrees 38.538 minutes North, 002 Degrees 43.162 minutes West) to
 Point 276 (50 Degrees 38.450 minutes North, 002 Degrees 42.033 minutes West) to
 Point 277 (50 Degrees 38.833 minutes North, 002 Degrees 42.300 minutes West) to
 Point 278 (50 Degrees 39.167 minutes North, 002 Degrees 42.000 minutes West) to
 Point 279 (50 Degrees 39.533 minutes North, 002 Degrees 39.733 minutes West) to
 Point 280 (50 Degrees 39.067 minutes North, 002 Degrees 39.200 minutes West) to
 Point 281 (50 Degrees 39.050 minutes North, 002 Degrees 38.383 minutes West) to

Point 282 (50 Degrees 38.600 minutes North, 002 Degrees 36.833 minutes West) to
 Point 283 (50 Degrees 38.350 minutes North, 002 Degrees 36.850 minutes West) to
 Point 284 (50 Degrees 37.633 minutes North, 002 Degrees 42.133 minutes West) to
 Point 285 (50 Degrees 39.000 minutes North, 002 Degrees 44.533 minutes West) to
 Point 286 (50 Degrees 39.000 minutes North, 002 Degrees 45.669 minutes West) to
 Point 287 (50 Degrees 39.660 minutes North, 002 Degrees 45.669 minutes West) to
 Point 288 (50 Degrees 39.660 minutes North, 002 Degrees 48.070 minutes West) to
 Point 289 (50 Degrees 39.458 minutes North, 002 Degrees 48.942 minutes West) to
 Point 290 (50 Degrees 39.000 minutes North, 002 Degrees 48.942 minutes West) to
 Point 291 (50 Degrees 39.000 minutes North, 002 Degrees 52.043 minutes West) to
 Point 292 (50 Degrees 38.870 minutes North, 002 Degrees 52.501 minutes West) to
 Point 293 (50 Degrees 39.000 minutes North, 002 Degrees 52.809 minutes West) to
 Point 294 (50 Degrees 39.000 minutes North, 002 Degrees 54.856 minutes West) to
 Point 295 (50 Degrees 38.705 minutes North, 002 Degrees 54.856 minutes West) to
 Point 296 (50 Degrees 38.705 minutes North, 002 Degrees 55.000 minutes West) to
 Point 297 (50 Degrees 38.617 minutes North, 002 Degrees 55.000 minutes West) to
 Point 298 (50 Degrees 38.167 minutes North, 002 Degrees 52.433 minutes West) to
 Point 299 (50 Degrees 37.866 minutes North, 002 Degrees 52.817 minutes West) to
 Point 300 (50 Degrees 37.667 minutes North, 002 Degrees 54.300 minutes West) to
 Point 301 (50 Degrees 37.267 minutes North, 002 Degrees 53.600 minutes West) to
 Point 302 (50 Degrees 37.084 minutes North, 002 Degrees 53.830 minutes West) to
 Point 303 (50 Degrees 37.000 minutes North, 002 Degrees 54.185 minutes West) to
 Point 304 (50 Degrees 37.433 minutes North, 002 Degrees 55.300 minutes West) to
 Point 305 (50 Degrees 37.383 minutes North, 002 Degrees 56.083 minutes West) to
 Point 306 (50 Degrees 38.124 minutes North, 002 Degrees 56.780 minutes West) to
 Point 307 (50 Degrees 43.070 minutes North, 002 Degrees 56.780 minutes West)
 From point 307 along the coast at the level of mean high water spring tide to point 265

Explanatory Note

(This note is not part of the Byelaw)

This byelaw prohibits the use of bottom towed fishing gear for the exploitation of sea fisheries resources in areas of the Southern Inshore Fisheries and Conservation Authority District in order to protect habitats and species within Marine Protected Areas. Prohibited areas are defined in the Schedule and are shown, for illustrative purposes only, on the maps below.



Cockles

The Authority for the Southern Inshore Fisheries and Conservation District, in exercise of the powers conferred by sections 155 and 156 of the Marine and Coastal Access Act 2009 hereby make the following byelaw for that District.

Definitions

(1) In this byelaw:

- (a) "the Authority" means the Southern Inshore Fisheries and Conservation Authority as defined in Articles 2 and 4 of the Southern Inshore Fisheries and Conservation Order 2010 (SI 2010 No 2198);
- (b) "the District" means the area defined in Articles 2 and 3 of the Southern Inshore Fisheries and Conservation Order 2010 (SI 2010 No 2198);
- (c) "dredge" means a dredge, scoop or similar device that is designed for, or capable of taking any shellfish;
- (d) "Poole Harbour" means that part of the District in Poole Harbour as lies below Mean High Water Springs and to the west of and within an imaginary line between Point 1 (50° 40.809'N 001° 57.000'W) and Point 2 (50°40.980'N 001° 56.926'W).

Prohibition

- (2) No person shall fish for or take from a fishery a cockle between the 1st February and the 30th April inclusive.
- (3) No person shall fish for or take from a fishery a cockle except:
 - (a) by hand picking, or;
 - (b) using a rake or other similar instrument, the head of which does not exceed 305mm in width and has spaces of at least 22.5mm between the teeth; or
 - (c) with a dredge provided that:
 - (i) the cockle bed is covered by water, and
 - (ii) the dredge has a basket not exceeding 460mm in width by 460mm in depth by 300mm high and having spaces of not less than 22.5 mm between the wires or netting forming the basket.
- (4) When a dredge being used from a vessel, cockles may only be removed from the dredge after the dredge has been hauled and lifted into the vessel.
- (5) No person shall take from a fishery a cockle which will pass through a gauge having a square opening measuring 23.8mm along each side.

Exceptions

- (6) Paragraphs 2, 3 and 4 do not apply to a person fishing for or taking cockles using a dredge from a vessel within Poole Harbour.
- (7) This byelaw shall not apply to a person performing an act which would otherwise constitute an offence against this byelaw, if that act was carried out in accordance with a written dispensation issued by the Authority authorising that act for scientific, stocking or breeding purposes.

Electric Current

No person shall within the District take or kill any sea fish by the discharge of electric current.

Fishing for Oysters, Mussels and Clams

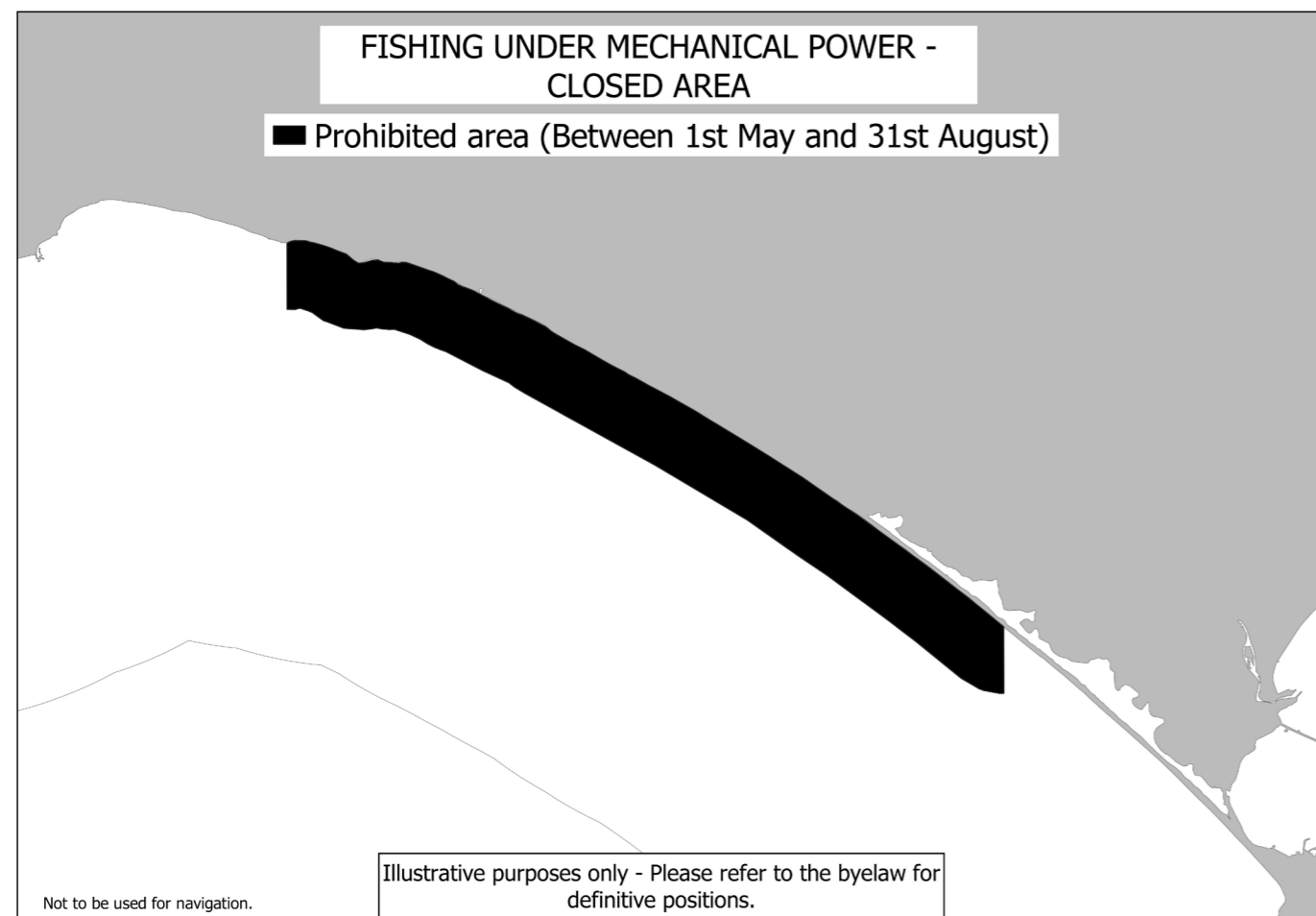
When fishing for oysters, clams and mussels in any fishery only the following methods may be used:

- (a) Handpicking
- (b) Dredging using a dredge with a rigid framed mouth so designed as to take shellfish only when towed along the sea bed. Shellfish may only be removed from the dredge when it has been hauled and lifted into the vessel.

This byelaw does not prejudicially affect any right of Several Fishery under the Sea Fisheries (Shellfish) Act 1967.

Fishing Under Mechanical Power - Closed Area

Between the 1st day of May in any year and the 31st day of August in the same year both days inclusive no person shall use in fishing for sea fish any trawl net in connection with a vessel which is for the time being propelled either entirely or in part by means of mechanical power in that part of the District which lies within one nautical mile from any part of the coast (measured from the general line of the coast at mean high-water spring tides) between a line drawn due South along longitude 2 degrees 50.4 minutes West from the most southerly portion of the base of Golden Cap and a line drawn due South from Chesil Beach on a longitude of 2 degrees 33.5 minutes West.



Foul Hooking

No person shall use any instrument or device whether used with a rod or line or otherwise for the purpose of foul hooking any mullet or bass. In this Byelaw the term "foul hooking" means the deliberate act of hooking fish in the body, posterior to the eyes.

Minimum Conservation Reference Size

The Authority for the Southern Inshore Fisheries and Conservation District, in exercise of the powers conferred by section 155 of the Marine and Coastal Access Act 2009 hereby make the following byelaw for that District.

Interpretation

- (1) In this byelaw:
- (a) "Area 1" means the area of the District to the east of a line due south from $50^{\circ} 35.462'N$ $002^{\circ} 00.000'W$;
 - (b) "Area 2" means the area of the District to the west of a line due south from $50^{\circ} 35.462'N$ $002^{\circ} 00.000'W$;
 - (c) "the Authority" means Southern Inshore Fisheries and Conservation Authority as defined in Articles 2 and 4 of the Southern Inshore Fisheries and Conservation Order 2010 (SI 2010/2198);
 - (d) "the District" means the area defined in Articles 2 and 3 of the Southern Inshore Fisheries and Conservation Order 2010;
 - (e) "tranship" means the transfer of fisheries products from one ship or other form of transport to another.
 - (f) "minimum conservation reference size" for:
 - (i) fish species shall be measured from the tip of the snout to the end of the tail fin;
 - (ii) bivalve mollusc species or a whelk (*Buccinum spp.*) shall be measured across the longest part of the shell;
 - (iii) a whole skate or ray shall be measured between the tips of the wings;
 - (iv) a skate or ray wing shall be measured as the maximum dimension of a wing when it is detached from the body of a skate or ray;
 - (v) a lobster (*Homarus gammarus*) shall be measured as the length of the carapace, parallel to the midline, from the back of either eye socket to the distal edge of the carapace;
 - (vi) a crawfish (*Palinurus spp.*) shall be measured as the length of the carapace from the tip of the rostrum to the midpoint of the distal edge of the carapace;

(2) All coordinates are derived from the World Geodetic System 1984 datum.

Prohibitions

- (3) A person must not remove from the fishery, retain on board, tranship, land, transport, store, sell, display or offer for sale from a fishery within the District, any fish, mollusc or crustacean species specified in Schedule 1A which measures less than the minimum conservation reference size specified in Schedule 1A. Any such fish, mollusc or crustacean must be returned to the sea immediately.
- (4) A person must not remove from the fishery, retain on board, tranship or land any fish, mollusc or crustacean species specified in Schedule 1B if:
- it measures less than the minimum conservation reference size specified in Schedule 1B; and
 - it was caught other than under the authority of a fishing vessel licence issued by the Marine Management Organisation or other devolved UK fishery administration.
- Any such fish, mollusc or crustacean must be returned to the sea immediately.
- (5) A person must not transport, store, sell, display or offer for sale any mollusc or crustacean species specified in Schedule 1B which measures less than the minimum conservation reference size specified in Schedule 1B.
- (6) A person must not remove from the fishery, retain on board or store any velvet crab (*Necora puber*) which measures less than 65 millimetres in carapace width. Any such crab must be returned to the sea immediately.
- (7) A person must not remove from the fishery, retain on board, tranship, transport, store, sell, display or offer for sale any male spinous spider crab (*Maja squinado*) which measures less than 130 millimetres in carapace length. Any such crab must be returned to the sea immediately.

Dispensations

- (8) Paragraphs (3), (4), (5), (6) and (7) do not apply to any person performing an act which would otherwise constitute an offence against this byelaw, if that act was carried out in accordance with a written permission issued by the Authority, permitting that act for scientific, stocking, educational or breeding purposes.

Schedule 1A

Southern Inshore Fisheries and Conservation Authority specified minimum conservation reference sizes for species not subject to the landing obligation

Fish	mm
Ballan wrasse (<i>Labrus bergylta</i>)	180
Black seabream (<i>Spondyliosoma cantharus</i>)	230
Brill (<i>Scophthalmus rhombus</i>)	300
Conger eel (<i>Conger conger</i>)	580
Corkwing wrasse (<i>Symphodus melops</i>)	140
Dab (<i>Limanda limanda</i>)	230
Flounder (<i>Platichthys flesus</i>)	270
Grey thick-lipped mullet (<i>Chelon labrosus</i>)	420
Grey thin-lipped mullet (<i>Chelon ramada</i>)	420
Golden grey mullet (<i>Chelon aurata</i>)	360
Goldsinny wrasse (<i>Ctenolabrus rupestris</i>)	120
Lemon sole (<i>Microstomus kitt</i>)	250
Red mullet (<i>Mullus surmuletus</i>)	150
Rock cook wrasse (<i>Centrolabrus exoletus</i>)	120
Skate or ray – whole	400
Skate or ray – wing	200
Turbot (<i>Scophthalmus maximus</i>)	300
Witch flounder (<i>Glyptocephalus cynoglossus</i>)	280
Molluscs	mm
Clam – American hard-shelled (<i>Mercenaria mercenaria</i>)	63
Crustacea	mm
Crawfish (<i>Palinurus spp.</i>)	110

Schedule 1B

Specified species minimum conservation reference sizes

Fish	mm
Cod (<i>Gadus morhua</i>)	350
European bass (<i>Dicentrarchus labrax</i>)	420
Horse mackerel (<i>Trachurus trachurus</i>)	150
Mackerel (<i>Scomber scombrus</i>)	200
Plaice (<i>Pleuronectes platessa</i>)	270
Pollack (<i>Pollachius pollachius</i>)	300
Sole (<i>Solea spp.</i>)	240
Whiting (<i>Merlangius merlangus</i>)	270
Molluscs	mm
Clam - Grooved carpetshell (<i>Ruditapes decussatus</i>)	40
Clam - Manila (<i>Ruditapes philippinarum</i>)	35
Clam - Surf (<i>Spisula solida</i>)	25
Clam - Warty Venus (<i>Venus verrucosa</i>)	40
Queen scallop (<i>Aequipecten opercularis</i>)	40
Razor clam (<i>Ensis spp.</i>)	100
Scallop (<i>Pecten maximus</i>) in Area 1	110
Scallop (<i>Pecten maximus</i>) in Area 2	100
Whelk (<i>Buccinum spp.</i>)	45
Crustacea	mm
Edible crab (<i>Cancer pagurus</i>)	140
Lobster (<i>Homarus gammarus</i>)	87
Spinous spider crab (<i>Maja squinado</i>) - Female	120

Schedule 2

Measurements of species

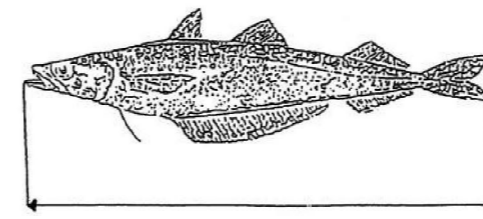


Figure 1. Fish Species

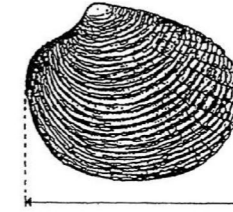


Figure 2. Bivalve mollusc species

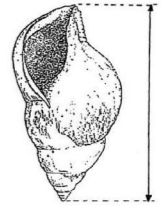


Figure 3. A whelk (*Buccinum spp.*)

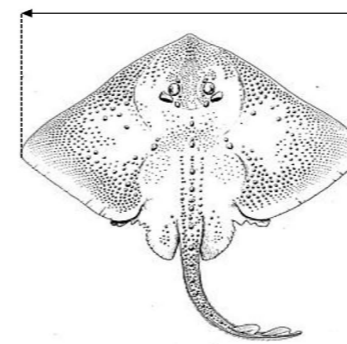


Figure 4. A whole skate or ray

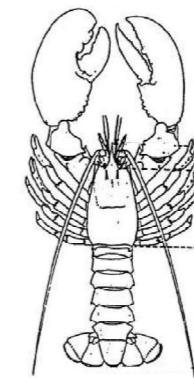


Figure 5. A lobster (*Homarus gammarus*)

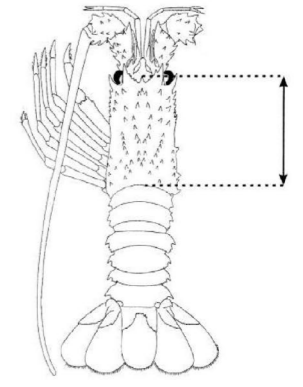


Figure 6. A crawfish (*Palinurus spp.*)

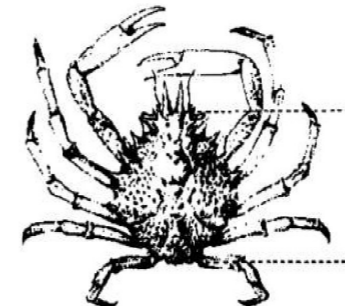


Figure 7. spinous crab (*Maja squinado*)

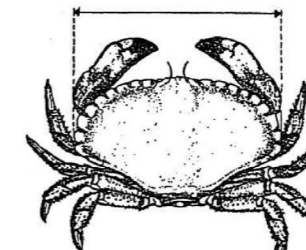


Figure 8. An edible crab (*Cancer pagurus*)

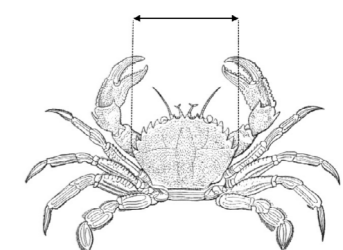
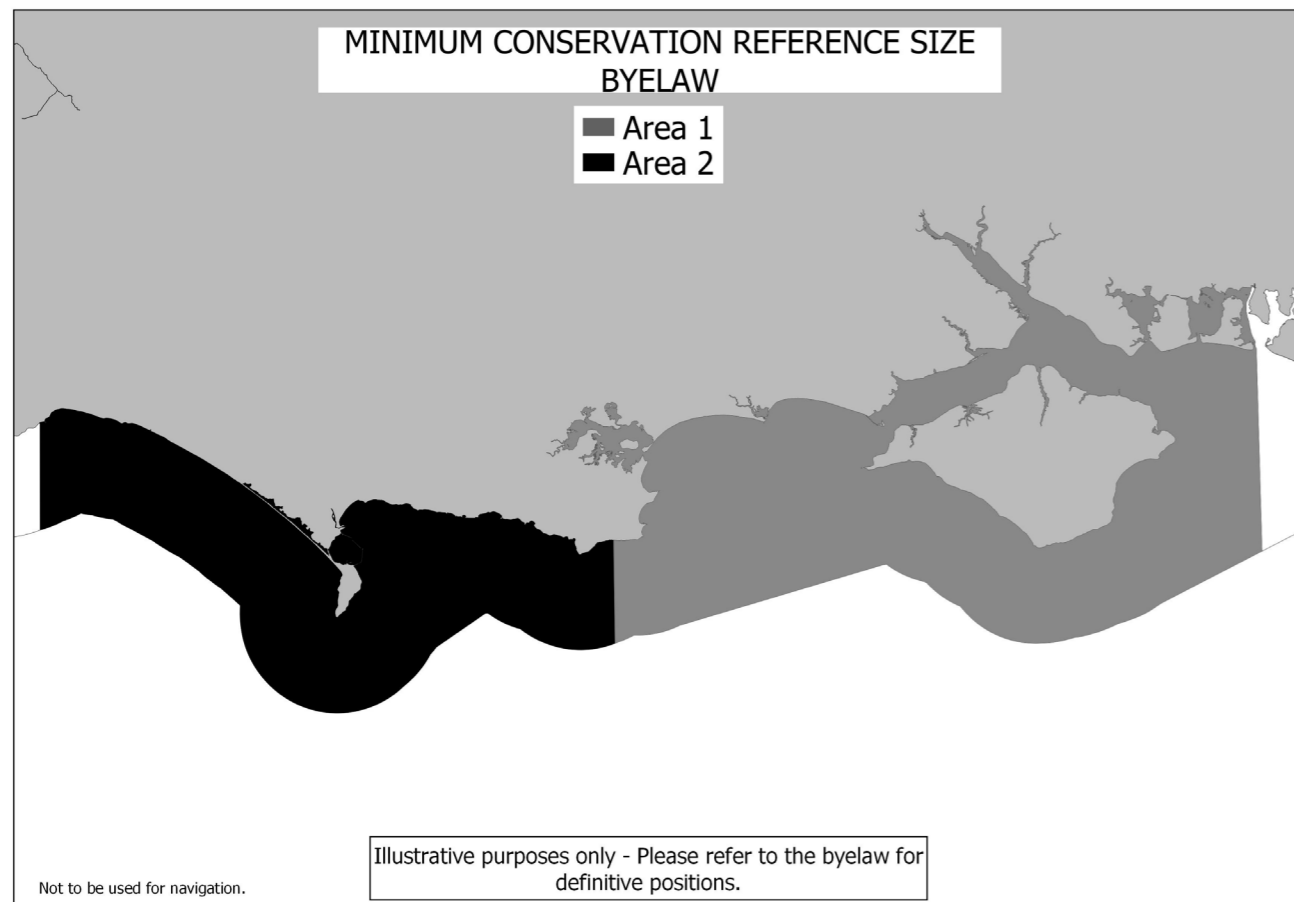


Figure 9. A velvet crab (*Necora puber*)

Schedule 3

Map showing location of boundary line between area 1 and area 2



Explanatory Note

(This note is not part of the Byelaw)

This byelaw prohibits the taking, retention on board, transshipping, landing, transporting, storing, selling, displaying or offering for sale of specified marine organisms below specified sizes.

The prohibitions are split into two schedules. Schedule 1A applies to all persons, irrespective of whether they are a commercial operator or a recreational operator. These are the species which are not subject to the landing obligation and have a minimum landing size specific to the Southern IFC District. Schedule 1B applies to all persons but contains a provision which exempts vessels fishing under a commercial fishing vessel licence issued by the Marine Management Organisation or a devolved administration, as these vessels are required to comply with landing obligations and Minimum Conservation Reference Sizes for these are provided for in UK legislation.

The prohibitions are applied to all persons for undersized velvet crabs and undersized male spider crabs with the exception of existing prohibitions, applied through UK Statutory Instruments.

The byelaw includes method of measurement according to the anatomy of the named species.

Mussels

No person shall remove from a fishery any mussel less than 50mm in length except where the mussels so removed are intended for the purpose of mussel cultivation by being placed without delay on a mussel cultivation bed or laying situated within the Southern Sea Fisheries District and within such bed or laying there is at the time a several or charter or other private right of fishery for mussels. Mussels for relaying may not be removed without first obtaining from the Chief Fishery Officer of the Committee his consent in writing which consent shall be given only if in the opinion of such Chief Fishery Officer their removal will not have a detrimental effect upon the fishery.

This byelaw does not prejudicially affect any right of Several Fishery under the Sea Fisheries (Shellfish) Act 1967.

Net Fishing

The Southern Inshore Fisheries and Conservation Authority, in exercise of the powers conferred by sections 155(1) of the Marine and Coastal Access Act 2009, hereby makes the following byelaw for that District.

Interpretation

(1) In this byelaw:

- (a) "the Authority" means the Southern Inshore Fisheries and Conservation Authority as defined in Articles 2 and 4 of the Southern Inshore Fisheries and Conservation Order 2010 (SI 2010 No 2198);
- (b) "bass" means the species European bass (*Dicentrarchus labrax*);
- (c) "Bass Nursery Area" means an area identified in Column 1 of the Schedule to the Bass (Specified Areas) (Prohibition of Fishing) Order 1990 (SI 1990 No 1156) and the corresponding prohibited period for each Bass Nursery Area is identified in Column 2 of the same Schedule;
- (d) "bottom set net" means a net that is set directly on the seabed and measures no more than 125 centimetres in overall height, including all attachments;
- (e) "the District" has the meaning given by Article 3 of the Southern Inshore Fisheries and Conservation Order 2010;
- (f) "marker buoy" means a floating object, including a buoy or dhan, which has a minimum diameter of at least 210 millimeters;
- (g) "Net Permit Area" means an area defined in Schedule 2;

- (h) "Net Prohibition Area" means an area defined in Schedule 3;
- (i) "Net Restriction Area" means an area defined in Schedule 1;
- (j) "net" means any form of net that is designed for, or capable of taking any sea fisheries resources, but does not include:
 - (i) any net that forms part of a dredge, trawl or similar device that is designed to be towed by a vessel to take any sea fisheries resources;
 - (ii) any net which forms any part of any folding or rigid cage device or structure with one or more openings or entrances capable of capturing any sea fisheries resources, including fyke nets;
 - (iii) any net which when fully expanded does not exceed an area of four square metres, where it is operated only manually and not in connection with any vessel or mechanical device; or
 - (iv) a landing net when used in conjunction with a rod and line, handline or longline;
- (k) "Permit" means a Net Permit issued under paragraph (19), (20) or (21) of this byelaw;
- (l) "ring net" means a single panel of net measuring no more than 350 metres in length and no more than 6 metres in overall height at any point, including all attachments.
- (m) "sea fisheries resources" has the meaning given by section 153(10) of the Marine and Coastal Access Act 2009;
- (n) "Threshold Trigger Level" means the threshold at which a control mechanism is activated in response to either a salmonid death or salmonid interaction, as set under the Authority's Net Permit Area Monitoring and Control Plan; and
- (o) "using" in relation to a net, means placing any part of it in the water, fishing with or retrieving any part of it from the water, and "use" and "user" shall be construed accordingly.

Prohibitions

- (2) A person must not use a net within a Net Prohibition Area.
- (3) A person must not use a net within a Net Restriction Area unless the use of the net complies with paragraphs (6) to (10) and paragraphs (15) to (18) of this byelaw.
- (4) A person must not use a net within a Net Permit Area unless:
 - (a) the use of the net by the person in that Net Permit Area is authorised by a Permit;
 - (b) the Permit authorising the use of the net is produced for inspection when requested by an Inshore Fisheries and Conservation Officer of the Authority or any other person authorised by the Authority to make such a request; and
 - (c) paragraphs (10) and (15) to (18) of this byelaw are being complied with.
- (5) A person must not use a net within a Bass Nursery Area in the District if:
 - (a) any bass is carried on the person or on board the vessel; and
 - (b) the net use is taking place during a Bass Nursery Area prohibited period.

Use of Nets in Net Restriction Areas

- (6) A person must not use a net other than a ring net:
 - (a) within the Langstone Harbour Net Restriction Area;
 - (b) within the Eastern Fleet Net Restriction Area;
 - (c) within the Wareham Approaches Net Restriction Area; or
 - (d) within the Christchurch Box Net Restriction Area, during the period beginning with 15th February and ending with 30th September.
- (7) A person must not use a net other than a ring net during the period beginning with 1st March and ending with 31st October:
 - (a) within the Portsmouth Harbour Net Restriction Area; and
 - (b) within the Poole Harbour Net Restriction Area.
- (8) A person must not use a net within three metres of the surface of the water at any state of the tide in the Lyme Bay Net Restriction Area.
- (9) A person must not use a net other than a bottom set net or ring net within the Christchurch Box Net Restriction Area, during the period beginning with 1st October and ending with 14th February.

Use of a Ring Net

- (10) The user of a ring net must:
 - (a) set the ring net from a vessel in a circular pattern to return to the starting point of the ring net or the same section of shore, without pause or delay, where the ring net will be closed except to allow the vessel to enter or exit the circle;
 - (b) attend the ring net at all times whilst it is in use; and
 - (c) begin the retrieval of the ring net within ten minutes of the conclusion of the ring net setting process, at which point the ring net must then be drawn back into the vessel without pause or delay, except to remove catch.

Exceptions

- (11) Paragraphs (2) to (4) do not apply to the use of a net for the purpose of taking fish other than sea fisheries resources, provided that its use is authorised in advance in writing by the Environment Agency.
- (12) Paragraphs (2) to (10) do not apply when the use of a net is authorised by written dispensation issued under paragraph (13) and the authorisation is valid in accordance with paragraph (14).

Dispensations

- (13) The Authority may issue a written dispensation authorising the use of a net for scientific, educational, stocking or breeding purposes.
- (14) A dispensation issued under paragraph (13) will only be valid if:
- the use of the net is for the scientific, educational, stocking or breeding purpose for which the dispensation was issued; and
 - whilst the net is in use, the dispensation is produced for inspection when requested by an Inshore Fisheries and Conservation Officer of the Authority or any other person authorised by the Authority to make such a request.

Marking of Nets

- (15) Any net used within the District must be marked at each end by a marker buoy that is above the water so as to be clearly visible at all states of tide.
- (16) All marker buoys, used to mark a net, must be clearly marked in a colour contrasting with the surface on which they are displayed with:
- where a license to fish under the Sea Fish (Conservation) Act 1967 (c.84) is held, the port letters and numbers of the vessel using that net; or
 - where a license to fish under the Sea Fish (Conservation) Act 1967 is not held, the name of the vessel using that net; or
 - where a vessel is not used, the initials and surname of the person using that net.
- (17) All letters and numbers shall be displayed as high above the water as possible on the marker buoy so as to be clearly visible.
- (18) The letters and numbers displayed on the marker buoy shall not be effaced, altered or allowed to become illegible.

Issue of Permits

- (19) The Authority may issue a Permit to a person authorising the fishing for or taking of sea fisheries resources using a net within the Southampton Water Permit Area, provided an application for the Permit is made in accordance with paragraph (22).
- (20) The Authority may issue a Permit to a person authorising the fishing for or taking of sea fisheries resources using a net within the Christchurch Harbour Permit Area, provided an application for the Permit is made in accordance with paragraph (22).
- (21) The Authority may issue a Permit to a person authorising the fishing for or taking of sea fisheries resources using a net within the River Hamble Permit Area, provided an application for the Permit is made in accordance with paragraph (22).

- (22) An application for a Permit under paragraphs (19), (20) and (21) must be made:
- in respect of a named fishing vessel; and
 - in writing to the Authority.
- (23) At any one time, a Permit holder or a named vessel may only hold one Southampton Water Net Permit, one Christchurch Harbour Net Permit and one River Hamble Net Permit.
- (24) A Permit:
- may contain any flexible Permit condition the Authority considers appropriate or necessary in the circumstances;
 - will be issued to the applicant ("the Permit holder") in respect of a named fishing vessel;
 - is not transferable from the Permit holder to another person, or between the fishing vessel named in the Permit and another vessel;
 - is valid for the period stated in the Permit; unless a temporary closure has been activated in accordance with paragraph (38).
- (25) The Permit holder must be present onboard the fishing vessel named in the Permit at all times whilst undertaking fishing activities authorised under the Permit.
- (26) At the request of the Authority, the Permit holder must facilitate access, for any person nominated by the Authority, to the fishing vessel named in the Permit for the purpose of observing fishing activities authorised under a Permit.
- (27) For the purpose of monitoring net fishing activities, at the request of the Authority, the Permit holder must:
- operate video recording equipment in the manner specified in any flexible Permit condition under a Permit; and
 - provide such detail and submit the information required by the Authority by such deadlines as are specified in any flexible Permit condition.
- (28) The Permit holder must complete and submit information, in the form of a catch return, to the Authority at such frequency, by such deadlines and containing such detail as are specified in any flexible Permit condition.

Cost of Permits

- (29) The Authority may charge a fee no greater than £1,000 for each Permit.
- (30) The Authority will review the suitability of Permit fees in accordance with paragraph (36) of this byelaw.
- (31) A fee of £50 is payable for the replacement of lost, amended or damaged Permits.

Number of Permits

- (32) The Authority may limit the number of Permits per year that it may grant for each Net Permit Area.
- (33) The Authority will review the limitations on the number of Permits in accordance with paragraph (36) of this byelaw.

Flexible Permit Conditions

- (34) The Authority (or a sub-committee thereof authorised by the Authority to do so) may, for the purposes of managing net fisheries, within Net Permit Areas or parts of Net Permit Areas, attach, vary or remove conditions to a Permit, including:
- (a) limiting the amount of sea fisheries resources a Permit holder may take;
 - (b) limiting the amount of time a Permit holder may spend net fishing;
 - (c) prohibiting or restricting any method of net fishing;
 - (d) setting the requirements for the use of video recording equipment;
 - (e) setting the frequency of deadlines for, and content of catch returns.
- (35) When introducing, removing or varying a flexible Permit condition the Authority must operate in accordance with the review procedure set out in paragraph (36).

Review Procedure

- (36) The Authority (or a sub-committee thereof authorised by the Authority to do so) will review the suitability of flexible Permit conditions, Permit fees and limitations on the number of Permits annually or, if required under paragraph (39), following the temporary closure of a Net Permit Area in accordance with the following procedure:
- (a) a consultation must be held with Permit holders and other such stakeholders as the Authority shall deem fit, to present any available evidence, as defined in paragraph (36) and discuss options;
 - (b) the Authority will decide whether to add, vary or remove any flexible Permit conditions, Permit fees or limitations on the number of Permits based on the consultation responses and information received in accordance with paragraph (37) whilst having regard to the Authority's duties and obligations under the Marine and Coastal Access Act 2009, the Conservation of Habitats and Species Regulations 2017 (SI 2017 No 1012) and the Wildlife and Countryside Act 1981 (c.69); and
 - (c) the outcome of the review will be notified by the Authority to Permit holders in writing.
- (37) The available evidence referred to in paragraph (36) may include any one or more of the following:
- (a) any available scientific and survey data, which may include data gathered through any monitoring and control plan;
 - (b) any evidence received from consultation with Permit holders;

- (c) any statutory advice given by Natural England or other such bodies, organisations or persons as the Authority shall deem fit;
- (d) any habitats regulations assessments and/or MCZ assessments relating to any proposed changes;
- (e) any impact assessment relating to any proposed changes; and
- (f) Authority expenditure arising from the:
 - (i) administration of Permits and processing of associated data;
 - (ii) undertaking of survey activity, stock assessments and habitats regulations assessments which directly inform the management of net fisheries within the Net Permit Areas;
 - (iii) delivery of patrols to monitor compliance with this byelaw and Permits.

Temporary Closure

- (38) The Authority (or sub-committee thereof authorised by the Authority to do so), may, in one continuous period, temporarily close a Net Permit Area to any method of net fishing for a period no more than 14 days if a Threshold Trigger Level has been reached, in order for an investigation to be carried out.
- (39) If, following investigation, the Authority (or sub-committee thereof authorised by the Authority to do so) deem the circumstances which led to the temporary closure of a Net Permit Area warrant the fishery to remain closed:
- (a) a full review will be presented to the Authority at the subsequent meeting of the Authority in line with the review procedure set out in paragraph (36); and
 - (b) the temporary closure will be extended until the review procedure is complete.

Revocations

- (40) The byelaw with the title 'Fixed Engines' made by Southern Sea Fisheries District Committee on 23rd September 2010, in exercise of its power under section 5 of the Sea Fisheries Regulation Act 1966 (c.38), as confirmed by the Secretary of State for Environment, Food and Rural Affairs on 22nd December 2010, and in force immediately before the making of this byelaw is revoked.
- (41) The byelaw with the title 'Regulation of the Use of Stake or Stop Nets in Langstone Harbour' made by Southern Sea Fisheries District Committee on 26th January 1970, in exercise of its power under section 5 of the Sea Fisheries Regulation Act 1966, as confirmed by the Minister of Agriculture, Fisheries and Food on 17th April 1970, and in force immediately before the making of this byelaw is revoked.
- (42) The byelaw with the title 'Sea Fisheries Fixed Engine Prohibition' made by the Environment Agency on 11th October 2010, having effect in relation to the District in accordance with Article 7 of the Marine and Coastal Access Act 2009 (Transitional and Savings Provisions) Order 2011 (SI 2011 No 603) and in force immediately before the making of this byelaw is revoked.

Explanatory Note (not part of the byelaw)

This byelaw manages fishing with nets for sea fisheries resources in the District in line with the Authority's duties under the Marine and Coastal Access Act 2009, the Conservation of Habitats and Species Regulations 2017 and the Wildlife and Countryside Act 1981.

The byelaw introduces Net Prohibition Areas, Net Restriction Areas and Net Permit Areas. Net fishing is prohibited in Net Prohibition Areas. Net fishing within Net Restriction Areas is subject to seasonal and/or gear restrictions and net fishing within Net Permit Areas is managed by permitting named individuals and specific vessels under flexible Permit conditions, subject to the review procedure set out in the byelaw.

The byelaw requires that all nets used in the District must be marked at each end by a marker buoy that clearly identifies the vessel or person using that net. The byelaw details both 'Exceptions' and 'Dispensations' for certain activities.

The management of the Net Permit Areas may be informed by a Net Permit Area Monitoring and Control Plan to ensure that the Authority are using the best available evidence to ensure that the ongoing management of the District's net fisheries remain compatible with the conservation objectives set (specific to Atlantic salmon, *Salmo salar*) for relevant special areas of conservation (SACs) and where Atlantic salmon and/or sea trout (*Salmo trutta*) are a notified feature or component of a site of special scientific interest (SSSI).

Manually operated landing or drop nets that measure less than four square metres, fyke nets, and hand operated push nets are exempt from this byelaw.

The Southern Inshore Fisheries and Conservation Authority's 'Fixed Engine', 'Regulation of the Use of Stake or Stop Nets in Langstone Harbour' and 'Sea Fisheries Fixed Engine Prohibition' legacy byelaws are revoked by this byelaw.

Schedule 1

Net Restriction Areas

Langstone Harbour Net Restriction Area

Excluding Net Prohibition Areas, the landward waters, including rivers, streams and tributaries enclosed by a line drawn from Point 1 (50° 47.348'N 001° 01.385'W) to Point 2 (50° 47.348'N 001° 01.762'W).

Portsmouth Harbour Net Restriction Area

Excluding Net Prohibition Areas, the landward waters, including rivers, streams and tributaries enclosed by a line drawn from Point 3 (50° 47.433'N 001° 06.530'W) to Point 4 (50° 47.380'N 001° 06.708'W).

Christchurch Box Net Restriction Area

The area enclosed by a line drawn from Point 9 (50° 44.166'N 001° 42.754'W) to Point 10 (50° 43.920'N 001° 42.750'W) to Point 11 (50° 43.180'N 001° 44.030'W) to Point 12 (50° 43.392'N 001° 44.425'W) along the shore, as defined by the level of mean water high spring tide, to Point 13 (50° 43.443'N 001° 44.415'W) to Point 14 (50° 43.559'N 001° 44.229'W) to Point 15 (50° 43.576'N 001° 44.272'W) along the shore, as defined by the level of mean water high spring tide, back to Point 9.

Poole Harbour Net Restriction Area

Excluding Net Prohibition Areas, the waters north and west of a line drawn from Point 16 (50° 40.980'N 001° 56.926'W) to Point 17 (50° 40.809'N 001° 57.000'W) and east of a line drawn from Point 18 (50° 42.720'N 002° 01.330'W) to Point 19 (50° 42.426'N 002° 01.561'W).

Wareham Approaches Net Restriction Area

Excluding Net Prohibition Areas, the area enclosed by a line drawn from Point 18 to Point 19 along the shore, as defined by the level of mean water high spring tide, to Point 20 (50° 41.260'N 002° 04.550'W) to Point 21 (50° 41.720'N 002° 04.620'W) along the shore, as defined by the level of mean water high spring tide, to Point 22 (50° 43.205'N 002° 02.465'W) to Point 23 (50° 43.221'N 002° 02.388'W) then along the shore, as defined by the level of mean water high spring tide, to Point 18.

Eastern Fleet Net Restriction Area

The area enclosed by a line drawn from Point 24 (50° 35.865'N 002° 30.211'W) to Point 25 (50° 36.004'N 002° 29.937'W) along the shore, as defined by the level of mean water high spring tide, to Point 26 (50° 34.993'N 002° 28.226'W) to Point 27 (50° 34.951'N 002° 28.190'W) then along the shore, as defined by the level of mean water high spring tide, to Point 24.

Lyme Bay Net Restriction Area

Excluding Net Prohibition Areas, the area enclosed by a line drawn from Point 28 (50° 41.065'N 002° 41.400'W) to Point 29 (50° 39.934'N 002° 41.400'W) along an imaginary line one nautical mile from the shore, as defined by the level of mean high water spring tide, to Point 30 (50° 42.123'N 002° 56.780'W) to Point 31 (50° 43.070'N 002° 56.780'W).

Schedule 2

Net Permit Areas

Southampton Water Permit Area

Excluding Net Prohibition Areas, the area enclosed by a line drawn from Point 8 to Point 32 (50° 49.210'N 001° 18.493'W), along the shore, as defined by the level of mean water high spring tide, to Point 33 (50° 52.248'N 001° 23.955'W) to Point 34 (50° 53.173'N 001° 22.445'W), along the shore, as defined by the level of mean water high spring tide, to Point 35 (50° 50.979'N 001° 18.599'W) to Point 36 (50° 50.860'N 001° 18.241'W), then back along the shore, as defined by the level of mean water high spring tide, to Point 8.

River Hamble Permit Area

Area A: The area enclosed by a line drawn from Point 37 (50° 51.331'N 001° 18.551'W) to Point 38 (50° 51.526'N 001° 18.609'W) to Point 39 (50° 51.682'N 001° 18.580'W) to Point 40 (50° 51.669'N 001° 18.513'W) to Point 41 (50° 51.604'N 001° 18.536'W) to Point 42 (50° 51.399'N 001° 18.422'W) and back to Point 37.

Area B: The area enclosed by a line drawn from Point 43 (50° 51.693'N 001° 18.573'W) to Point 44 (50° 51.784'N 001° 18.541'W) to Point 45 (50° 51.940'N 001° 18.448'W) to Point 46 (50° 51.930'N 001° 18.413'W) to Point 47 (50° 51.696'N 001° 18.507'W) and back to Point 43.

Area C: The area enclosed by a line drawn from Point 48 (50° 52.155'N 001° 18.391'W) to Point 49 (50° 52.377'N 001° 18.520'W) to Point 50 (50° 52.432'N 001° 18.354'W) and back to Point 48.

Christchurch Harbour Permit Area

Excluding Net Prohibition Areas, the area enclosed by a line drawn from Point 13 to Point 14 to Point 15 along the shore, as defined by the level of mean water high spring tide, to Point 51 (50° 43.584'N 001° 44.921'W) to Point 52 (50° 43.082'N 001° 44.849'W), then back along the shore, as defined by the level of mean water high spring tide, to Point 13.

Schedule 3

Net Prohibition Areas

Bembridge Harbour Net Prohibition Area

The landward waters, including rivers, streams and tributaries enclosed by a line drawn from Point 53 (50° 41.714'N 001° 05.663'W) to Point 54 (50° 41.724'N 001° 05.815'W).

Wooton Creek Net Prohibition Area

The landward waters, including rivers, streams and tributaries enclosed by a line drawn from Point 55 (50° 44.104'N 001° 12.661'W) to Point 56 (50° 44.260'N 001° 12.813'W).

King's Quay Net Prohibition Area

The landward waters, including rivers, streams and tributaries enclosed by a line drawn from Point 57 (50° 44.586'N 001° 14.233'W) to Point 58 (50° 44.645'N 001° 14.411'W).

River Medina Net Prohibition Area

The landward waters, including rivers, streams and tributaries enclosed by a line drawn from Point 59 (50° 45.890'N 001° 17.882'W) to Point 60 (50° 45.881'N 001° 17.511'W) to Point 61 (50° 45.777'N 001° 17.304'W).

Newtown Harbour Net Prohibition Area

The landward waters, including rivers, streams and tributaries enclosed by a line drawn from Point 62 (50° 43.610'N 001° 24.295'W) to Point 63 (50° 43.503'N 001° 24.981'W).

Yarmouth Harbour and Western Yar Net Prohibition Area

The landward waters, including rivers, streams and tributaries enclosed by a line drawn from Point 64 (50° 42.424'N 001° 30.019'W) to Point 65 (50° 42.423'N 001° 30.077'W).

Bridge Lake, Langstone Harbour Net Prohibition Area

The landward waters, including rivers, streams and tributaries west of Langstone Bridge and enclosed by a line drawn from Point 66 (50° 49.428'N 000° 59.274'W) to Point 67 (50° 49.578'N 001° 01.442'W).

Langstone Harbour Channels Net Prohibition Area

The area enclosed by a line drawn from Point 1 to Point 2 and then along the shore, as defined by the level of mean water high spring tide, to Point 68 (50° 47.765'N 001° 01.794'W) to Point 69 (50° 48.211'N 001° 01.857'W) to Point 70 (50° 48.554'N 001° 01.827'W) to Point 71 (50° 49.323'N 001° 02.301'W) to Point 72 (50° 49.323'N 001° 02.255'W) to Point 73 (50° 48.729'N 001° 01.699'W) to Point 74 (50° 48.359'N 001° 01.669'W) to Point 75 (50° 48.855'N 001° 00.232'W) to Point 76 (50° 49.478'N 001° 00.002'W) to Point 77 (50° 49.469'N 000° 59.869'W) to Point 78 (50° 49.253'N 000° 59.857'W) to Point 79 (50° 48.725'N 001° 00.168'W) to Point 80 (50° 48.133'N 001° 01.566'W) to Point 81 (50° 47.774'N 001° 01.522'W) along the shore, as defined by the level of mean water high spring tide, to Point 1.

Fareham Creek, Portsmouth Harbour Net Prohibition Area

The landward waters, including rivers, streams and tributaries enclosed by a line drawn from Point 82 (50° 50.343'N 001° 09.509'W) to Point 83 (50° 50.502'N 001° 09.777'W).

Portsmouth Harbour Channels Net Prohibition Area

The area enclosed by a line drawn from Point 4 along the shore, as defined by the level of mean water high spring tide, to

Point 84 (50° 48.055'N 001° 07.310'W) to
 Point 85 (50° 48.084'N 001° 07.082'W) to
 Point 86 (50° 48.228'N 001° 07.121'W) to
 Point 87 (50° 48.443'N 001° 07.297'W) to
 Point 88 (50° 48.584'N 001° 07.508'W) to
 Point 89 (50° 48.911'N 001° 08.022'W) to
 Point 90 (50° 49.240'N 001° 08.112'W) to
 Point 91 (50° 49.391'N 001° 08.304'W) to
 Point 92 (50° 49.539'N 001° 08.601'W) to
 Point 93 (50° 49.668'N 001° 08.666'W) to
 Point 94 (50° 49.834'N 001° 08.594'W) to
 Point 95 (50° 49.912'N 001° 08.600'W) to
 Point 96 (50° 49.992'N 001° 08.653'W) to
 Point 97 (50° 50.102'N 001° 08.941'W) to
 Point 98 (50° 50.282'N 001° 09.067'W) to
 Point 99 (50° 50.330'N 001° 09.148'W) to
 Point 100 (50° 50.375'N 001° 09.254'W) to
 Point 101 (50° 50.367'N 001° 09.424'W) to Point 82 to
 Point 102 (50° 50.399'N 001° 09.604'W) to
 Point 103 (50° 50.415'N 001° 09.224'W) to
 Point 104 (50° 50.320'N 001° 09.042'W) to
 Point 105 (50° 50.123'N 001° 08.843'W) to
 Point 106 (50° 50.030'N 001° 08.576'W) to
 Point 107 (50° 49.959'N 001° 08.504'W) to
 Point 108 (50° 49.612'N 001° 08.522'W) to
 Point 109 (50° 49.548'N 001° 08.465'W) to
 Point 110 (50° 49.510'N 001° 08.400'W) to
 Point 111 (50° 49.469'N 001° 08.220'W) to
 Point 112 (50° 49.463'N 001° 07.960'W) to
 Point 113 (50° 48.987'N 001° 07.717'W) to
 Point 114 (50° 48.869'N 001° 07.317'W) to
 Point 115 (50° 48.956'N 001° 07.291'W) to
 Point 116 (50° 49.024'N 001° 07.252'W) to

Point 117 (50° 49.146'N 001° 07.167'W) to
 Point 118 (50° 49.298'N 001° 06.903'W) to
 Point 119 (50° 49.368'N 001° 06.710'W) to
 Point 120 (50° 49.388'N 001° 06.492'W) to
 Point 121 (50° 49.449'N 001° 06.379'W) to
 Point 122 (50° 49.524'N 001° 06.310'W) to
 Point 123 (50° 49.583'N 001° 06.283'W) to
 Point 124 (50° 49.671'N 001° 06.376'W) to
 Point 125 (50° 49.711'N 001° 06.512'W) to
 Point 126 (50° 49.761'N 001° 06.607'W) to
 Point 127 (50° 49.814'N 001° 06.620'W) to
 Point 128 (50° 49.951'N 001° 06.584'W) to
 Point 129 (50° 50.059'N 001° 06.579'W) to
 Point 130 (50° 50.337'N 001° 06.606'W) to
 Point 131 (50° 50.519'N 001° 06.555'W) to
 Point 132 (50° 50.647'N 001° 06.345'W) to
 Point 133 (50° 50.635'N 001° 06.215'W) along the shore,
 as defined by the level of mean water high spring tide, to
 Point 134 (50° 50.627'N 001° 06.218'W) to
 Point 135 (50° 50.614'N 001° 06.364'W) to
 Point 136 (50° 50.502'N 001° 06.532'W) to
 Point 137 (50° 50.336'N 001° 06.566'W) to
 Point 138 (50° 50.069'N 001° 06.534'W) to
 Point 139 (50° 49.965'N 001° 06.537'W) to
 Point 140 (50° 49.873'N 001° 06.559'W) to
 Point 141 (50° 49.769'N 001° 06.534'W) to
 Point 142 (50° 49.711'N 001° 06.184'W) to
 Point 143 (50° 49.672'N 001° 06.170'W) to
 Point 144 (50° 49.447'N 001° 06.237'W) to
 Point 145 (50° 49.351'N 001° 06.287'W) to
 Point 146 (50° 49.255'N 001° 06.477'W) to
 Point 147 (50° 49.203'N 001° 06.724'W) to
 Point 148 (50° 49.153'N 001° 06.855'W) to
 Point 149 (50° 48.998'N 001° 07.112'W) to
 Point 150 (50° 48.864'N 001° 07.174'W) to
 Point 151 (50° 48.812'N 001° 07.178'W) to

Point 152 (50° 48.615'N 001° 06.776'W) to
 Point 153 (50° 48.821'N 001° 06.100'W) along the shore, as defined by the level of mean water high spring tide, to
 Point 154 (50° 48.952'N 001° 05.594'W) to
 Point 155 (50° 48.953'N 001° 05.468'W) along the shore, as defined by the level of mean water high spring tide, to Point 3.

River Meon Net Prohibition Area

The landward waters, including rivers, streams and tributaries enclosed by a line drawn from
 Point 5 (50° 49.000'N 001° 14.072'W) to
 Point 6 (50° 48.800'N 001° 14.280'W) to
 Point 7 (50° 48.958'N 001° 14.944'W) to
 Point 8 (50° 49.063'N 001° 14.838'W).

River Test and River Itchen Net Prohibition Area

The landward waters, including rivers, streams and tributaries enclosed by a line drawn from
 Point 33 to Point 34.

Southampton Water Channels and River Hamble Net Prohibition Area

Excluding the River Hamble Permit Area, the area enclosed by a line drawn from Point 32 to
 Point 156 (50° 50.047' N 001° 19.385' W) to
 Point 157 (50° 50.646' N 001° 20.188' W) to
 Point 158 (50° 51.021' N 001° 20.537' W) to
 Point 159 (50° 52.158' N 001° 22.773' W) to
 Point 160 (50° 52.586' N 001° 23.436' W) to
 Point 161 (50° 52.704' N 001° 23.236' W) to
 Point 162 (50° 50.946' N 001° 19.612' W) to
 Point 163 (50° 50.150' N 001° 18.665' W) to
 Point 164 (50° 50.495' N 001° 18.827' W) to
 Point 165 (50° 50.621' N 001° 18.826' W) to
 Point 166 (50° 50.900'N 001° 18.586'W) to Point 35 along the shore, as defined by the level of
 mean water high spring tide, to Point 36 to
 Point 167 (50° 50.931' N 001° 18.439' W) to
 Point 168 (50° 50.538' N 001° 18.720' W) to
 Point 169 (50° 49.558' N 001° 18.226' W) to
 Point 170 (50° 49.185'N 001° 17.802'W) and then back to Point 32.

River Beaulieu Net Prohibition Area

The landward waters, including rivers, streams and tributaries enclosed by a line drawn from
 Point 171 (50° 47.052'N 001° 21.346'W) to
 Point 172 (50° 46.854'N 001° 21.755'W) to
 Point 173 (50° 47.030'N 001° 21.992'W) to
 Point 174 (50° 46.552'N 001° 23.547'W).

Lymington Net Prohibition Area

The landward waters, including rivers, streams and tributaries enclosed by a line drawn from
 Point 175 (50° 45.659'N 001° 27.736'W) to
 Point 176(50° 43.789'N 001° 32.445'W).

Keyhaven Net Prohibition Area

The landward waters, including rivers, streams and tributaries enclosed by a line drawn from Point 176 to Point 177 (50° 42.861'N 001° 33.297'W).

River Avon, River Stour and Western Christchurch Harbour Net Prohibition Area

The landward waters, including rivers, streams and tributaries enclosed by a line drawn from Point 51 to Point 52.

River Mude Net Prohibition Area

The landward waters or within 25 metres of Point 178 (50° 43.658'N 001° 44.613'W), where the River Mude enters Christchurch Harbour.

Christchurch Channels Net Prohibition Area

The area enclosed by a line drawn from Point 13 along the shore, as defined by the level of mean water high spring tide, to Point 179 (50° 43.175' N 001° 44.587' W) to Point 180 (50° 43.171' N 001° 44.862' W) to Point 181 (50° 43.196'N 001° 44.865'W) to Point 182 (50° 43.201'N 001° 44.680'W) to Point 183 (50° 43.237' N 001° 44.609' W) to Point 184 (50° 43.357' N 001° 44.614' W) to Point 185 (50° 43.426' N 001° 44.553' W) along the shore, as defined by the level of mean water high spring tide to Point 15 to Point 14 and back to Point 13.

Wych Lake and Middlebere Lake Net Prohibition Area

The landward waters, including rivers, streams and tributaries enclosed by a line drawn from Point 186 (50° 40.900'N 002° 01.000'W) to Point 187 (50° 41.253'N 002° 01.749'W).

Holes Bay North Net Prohibition Area

The landward waters, including rivers, streams and tributaries north of a line drawn from Point 188 (50° 43.736'N 002° 00.705'W), following the railway line east to Point 189 (50° 43.781'N 001° 59.541'W).

Lytchett Bay and River Sherford Net Prohibition Area

The landward waters, including rivers, streams and tributaries enclosed by a line drawn from Point 22 to Point 23.

River Frome and River Piddle Net Prohibition Area

The landward waters, including rivers, streams and tributaries enclosed by a line drawn from Point 20 to Point 21.

Poole Harbour Channels Net Prohibition Area

The area enclosed by a line drawn from Point 17 to Point 190 (50° 41.032'N 001° 57.319'W) to Point 191 (50° 41.060'N 001° 57.416'W) to Point 192 (50° 40.663'N 001° 57.932'W) to Point 193 (50° 40.575'N 001° 58.181'W) to Point 194 (50° 40.525'N 001° 58.498'W) to Point 195 (50° 40.612'N 001° 58.705'W) to Point 196 (50° 40.667'N 001° 58.636'W) to Point 197 (50° 40.569'N 001° 58.455'W) to Point 198 (50° 40.719'N 001° 57.948'W) to Point 199 (50° 41.140'N 001° 57.390'W) to Point 200 (50° 41.431'N 001° 57.247'W) to Point 201 (50° 41.691'N 001° 57.201'W) to Point 202 (50° 41.837'N 001° 57.238'W) to Point 203 (50° 41.963'N 001° 57.390'W) to Point 204 (50° 42.229'N 001° 58.370'W) to Point 205 (50° 42.329'N 001° 58.892'W) to

Point 206 (50° 42.341'N 001° 59.233'W) to Point 207 (50° 42.304'N 001° 59.406'W) to Point 208 (50° 42.298'N 001° 59.787'W) to Point 209 (50° 42.154'N 002° 00.596'W) to Point 210 (50° 42.546'N 002° 01.106'W) to Point 211 (50° 42.660'N 002° 01.378'W) to Point 19 along the shore, as defined by the level of mean water high spring tide, to Point 212 (50° 42.373'N 002° 02.505'W) to Point 213 (50° 42.223'N 002° 02.792'W) to Point 214 (50° 42.101'N 002° 03.201'W) to Point 215 (50° 41.614'N 002° 04.600'W) to Point 216 (50° 41.629'N 002° 04.603'W) to Point 217 (50° 41.988'N 002° 03.667'W) to Point 218 (50° 42.117'N 002° 03.220'W) to Point 219 (50° 42.248'N 002° 02.813'W) to Point 220 (50° 42.428'N 002° 02.550'W) to Point 221 (50° 42.824'N 002° 01.936'W) to Point 222 (50° 42.844'N 002° 02.532'W) to Point 223 (50° 43.062'N 002° 02.993'W) along the shore, as defined by the level of mean water high spring tide, to Point 23 to Point 22 along the shore, as defined by the level of mean water high spring tide, to Point 224 (50° 42.718'N 002° 01.132'W) to Point 225 (50° 42.198'N 002° 00.563'W) to Point 226 (50° 42.455'N 001° 59.845'W) to Point 227 (50° 42.438'N 001° 59.145'W) to Point 228 (50° 42.433'N 001° 58.996'W) to Point 229 (50° 42.327'N 001° 58.451'W) to Point 230 (50° 42.014'N 001° 57.276'W) to Point 231 (50° 41.900'N 001° 57.062'W) to Point 232 (50° 41.681'N 001° 57.026'W) to Point 233 (50° 41.154'N 001° 57.179'W) to Point 234 (50° 41.126'N 001° 57.110'W) and back along the shore, as defined by the level of mean water high spring tide, to Point 16.

Weymouth Harbour Net Prohibition Area

The landward waters, including rivers, streams and tributaries enclosed by a line drawn from Point 235 (50° 36.578'N 002° 26.486'W) to Point 236 (50° 36.586'N 002° 26.633'W).

Western Fleet Net Prohibition Area

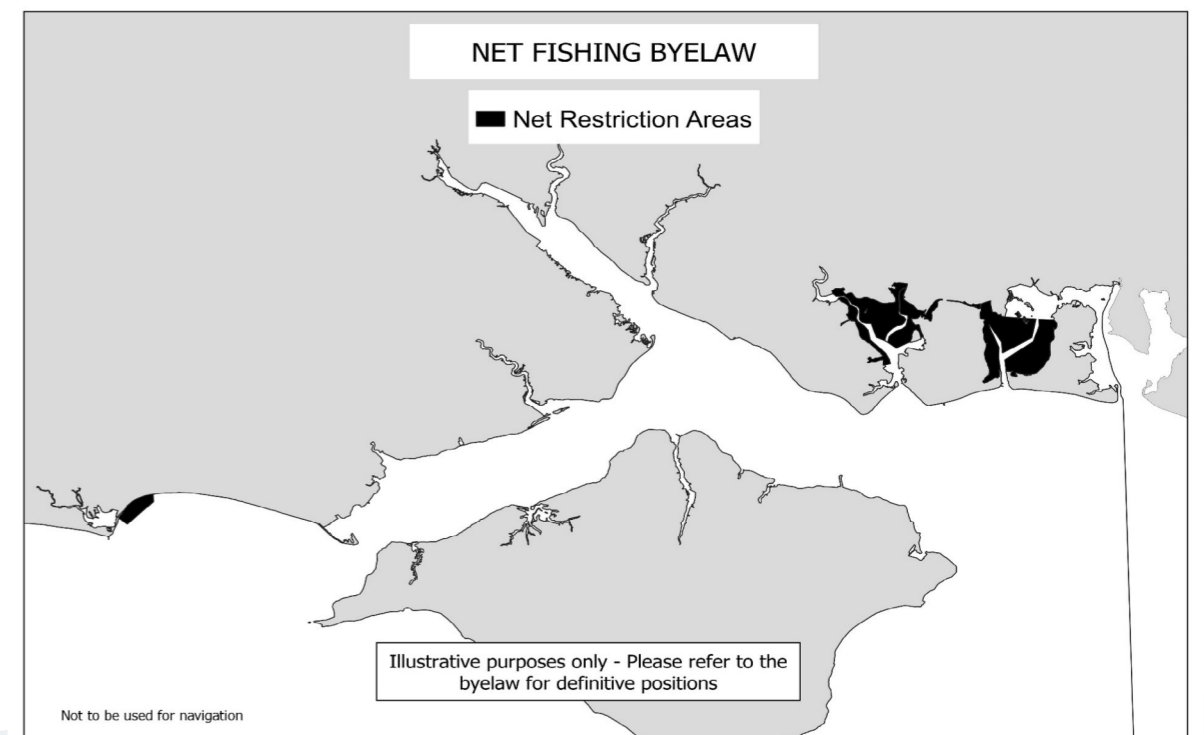
The landward waters, including rivers, streams and tributaries enclosed and west of a line drawn from Point 24 to Point 25.

Bridport Harbour Net Prohibition Area

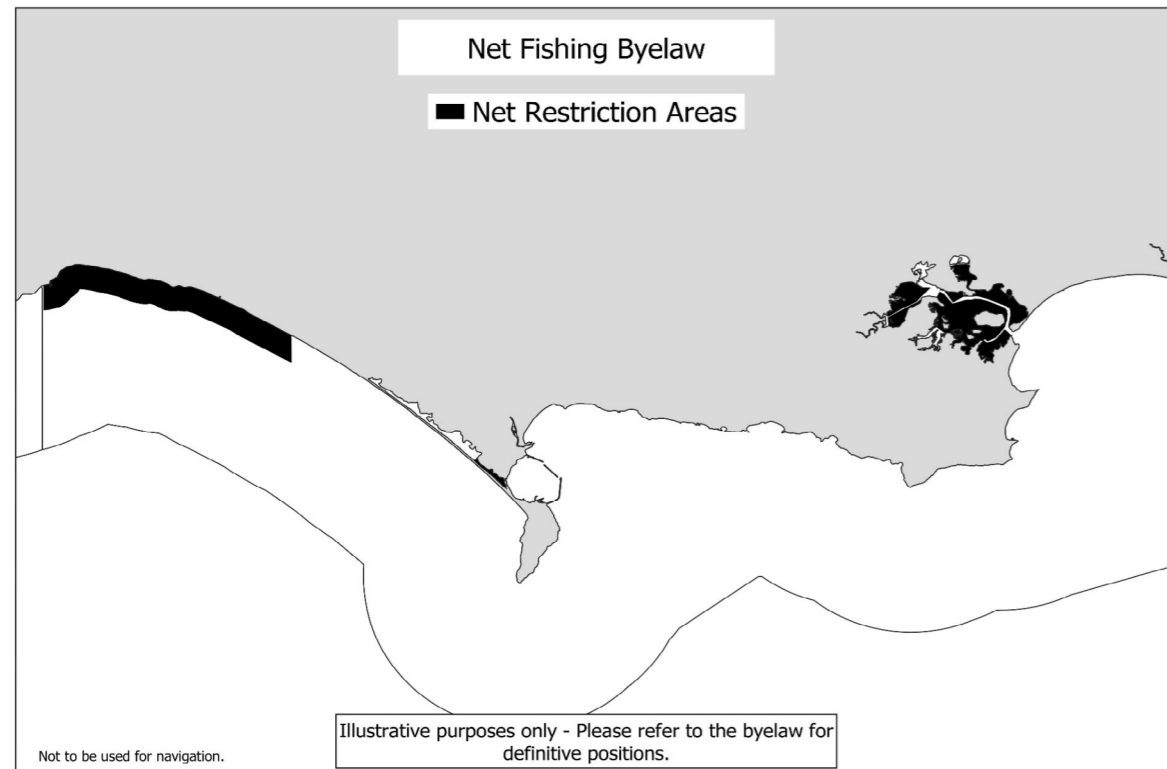
The landward waters, including rivers, streams and tributaries enclosed by a line drawn from Point 237 (50° 42.556'N 002° 45.823'W) to Point 238 (50° 42.532'N 002° 45.838'W).

Schedule 4

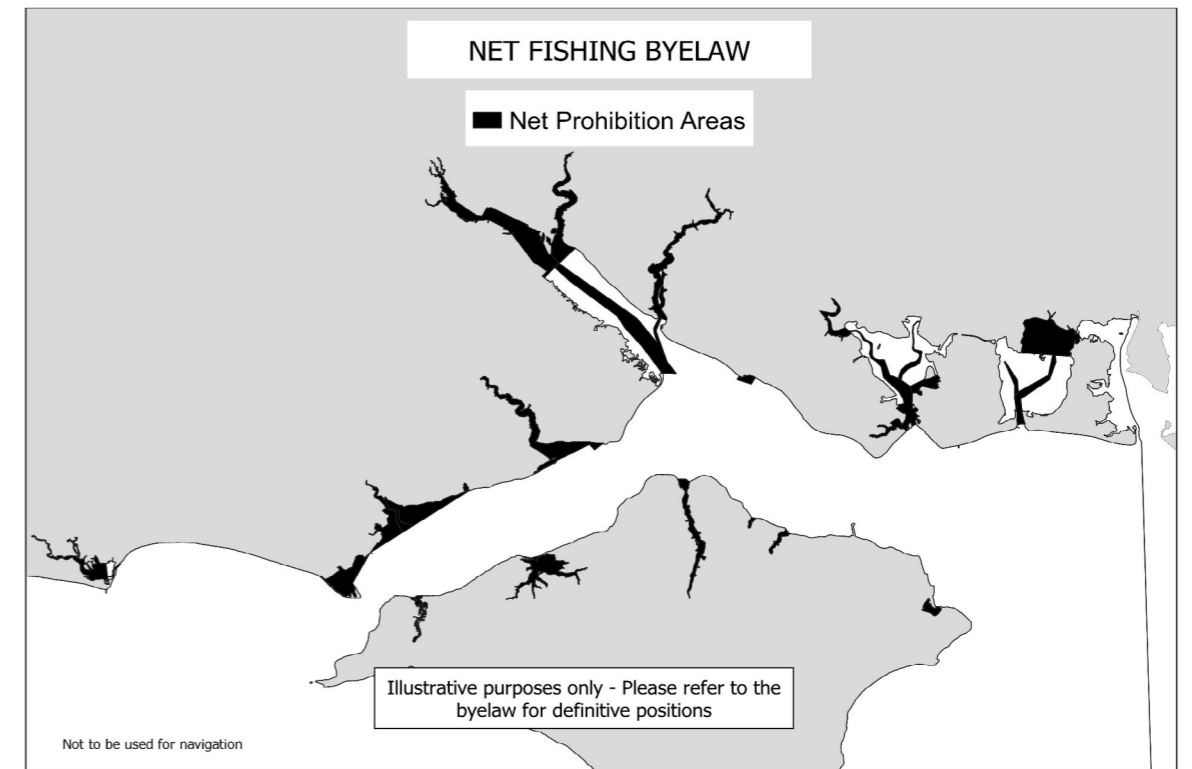
A map showing the location of the Langstone Harbour, Portsmouth Harbour and Christchurch Box net restriction areas, the co-ordinates for which are contained in schedule 1.



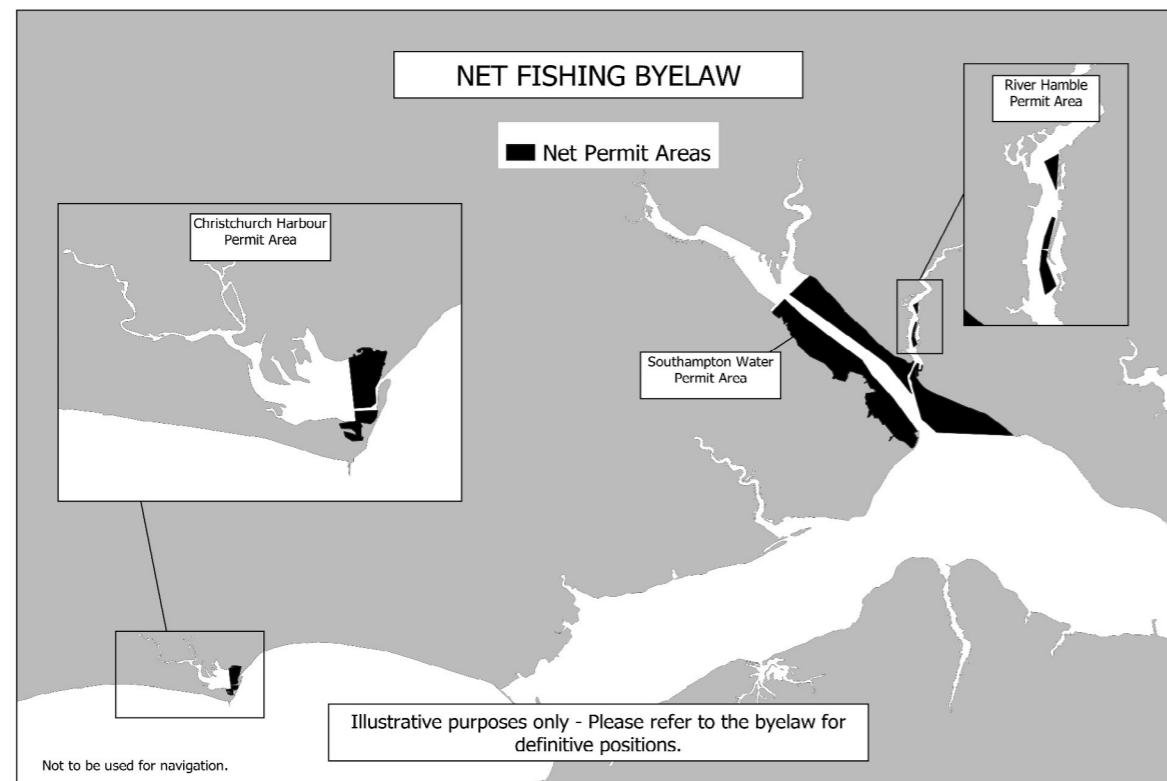
A map showing the location of the Poole Harbour, Wareham approaches, East Fleet and Lyme Bay net restriction areas, the co-ordinates for which are contained in schedule 1.



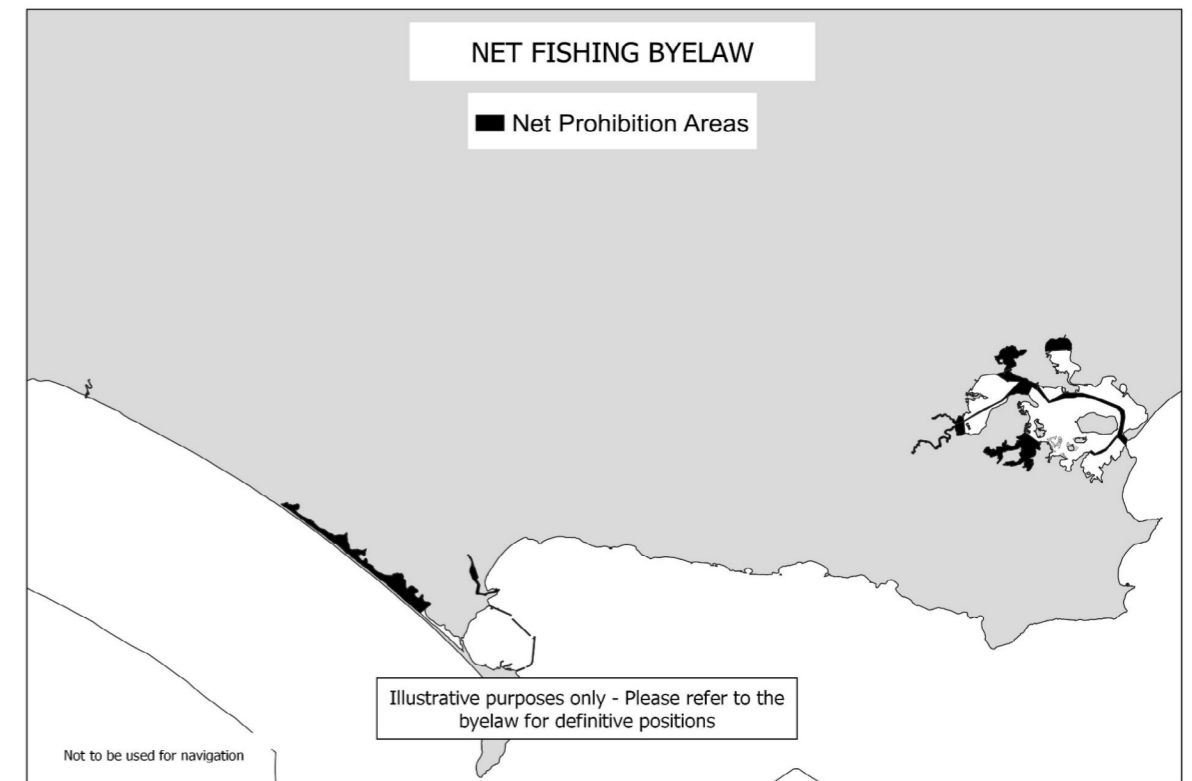
A map showing the location of net prohibition areas in Hampshire, the Isle of Wight and Christchurch Harbour, the co-ordinates for which are contained in schedule 3.



A map showing the location of the Southampton water, River Hamble and Christchurch Harbour net permit areas, the co-ordinates for which are contained in schedule 2.



A map showing the location of net prohibition areas in Poole Harbour, Weymouth, the Western Fleet and Bridport Harbour, the co-ordinates for which are contained in schedule 3.



Oysters Close Season

No person shall dredge or fish for in or take from any fishery oysters during the period from 1st day of March to the 31st day of October in any year both days inclusive.

Provided that between 14th May in any year and the following 4th August (both days inclusive) this Byelaw shall not apply within that part of the District which is within 10 miles of South Haven Point at the entrance to Poole Harbour where the oysters so taken are intended for the purpose of oyster cultivation by being placed without delay and without prior sale on an oyster cultivation bed or laying situated within the areas in and near the Harbour at Poole which are comprised in and described by the Poole Fishery Order and within such bed or laying there is at the time a several right of fishery for oysters.

This byelaw does not prejudicially affect any right of several fishery under the Sea Fisheries (Shellfish) Act 1967.

Oyster Dredges

In dredging or fishing for oysters in any fishery no dredge shall be used which has a front edge or blade exceeding 1.5 metres in length and if two or more dredges are in dredging or fishing for oysters used at the same time in or from the same boat or vessel the total length of the front edges or blades of such dredges when added together shall not exceed 3.0 metres.

This byelaw does not prejudicially affect any right of several fishery under the Sea Fisheries (Shellfish) Act 1967.

Oysters

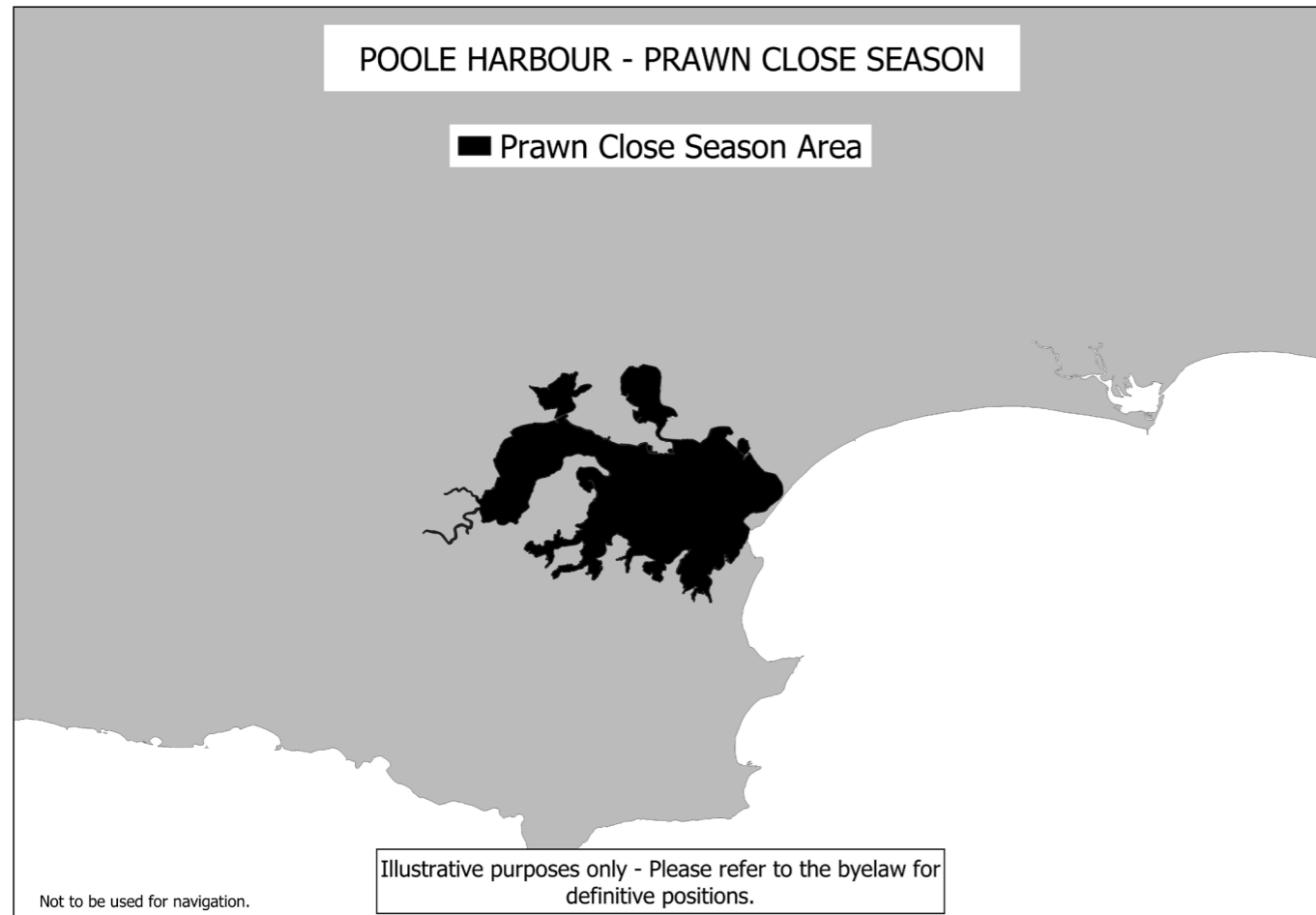
- (1) No person shall remove from a public or regulated fishery any oyster (other than Portuguese oysters and Pacific Oysters) which will pass through a circular ring of 70mm in internal diameter.
- (2) No person shall remove from a public fishery any cultch or other materials for the reception of the spawn or young of any shellfish unless such removal is necessary for the destruction of pests or their spawn or of disease or is in accordance with established principles of oyster cultivation
- (3) Any such oyster cultch or other material for the reception of spat, which may be lifted while fishing or otherwise, the removal of which from a public fishery is prohibited by the above byelaws, shall at once be redeposited as nearly as possible on the same fishing ground.

Periwinkles

No person shall take from a fishery any periwinkles between the 15th day of May in any year and the 15th day of September in the same year, both days inclusive. No person shall take periwinkles except by hand picking.

Poole Harbour - Prawns Close Season

During the period from 1st day of January to the 31st day of July in any year (both days inclusive) no person shall in Poole Harbour Dorset West of and within the line of the ferry across the mouth of the said Harbour fish for any prawns or remove any prawns from the fishery.



Poole Harbour Dredge Permit Byelaw

The Authority for the Southern Inshore Fisheries and Conservation District, in exercise of the powers conferred by sections 155 and 156 of the Marine and Coastal Access Act 2009 hereby make the following byelaw for that District.

Definitions

(1) In this byelaw:

- (a) "the Authority" means the Southern Inshore Fisheries and Conservation Authority as defined in Articles 2 and 4 of the Southern Inshore Fisheries and Conservation Order 2010 (SI 2010 No 2198);
- (b) "certificate of registry" means a certificate of registry issued under the Merchant Shipping (Registration of Ships) Regulations 1993;
- (c) "the District" means the area defined in Articles 2 and 3 of the Southern Inshore Fisheries and Conservation Order 2010 (SI 2010 No 2198);
- (d) "dredge" means a dredge, scoop or similar device and any auxiliary hydraulic equipment that is designed for, or capable of taking any shellfish;
- (e) "Poole Harbour" means that part of the District in Poole Harbour as lies below Mean High Water Springs and to the west of and within an imaginary line between Point 1 (50° 40.809'N 001° 57.000'W) and Point 2 (50° 40.980'N 001° 56.926'W);
- (f) "relevant fishing vessel" means any fishing vessel which:
 - (i) is registered in Part II of the Register of British Ships in accordance with Part II of the Merchant Shipping Act 1995 and the regulations made under that Act; and
 - (ii) is licensed to fish by virtue of a licence issued by an appropriate minister under the Sea Fish (Conservation) Act 1967;
- (g) "using" in relation to a fishing dredge shall mean pulling or pushing it along, through or above the seabed and "use" shall be construed accordingly;

Prohibitions

- (2) Subject to paragraphs (3) and (4) no person on board or by means of a vessel shall use, retain on board, store or transport a dredge within Poole Harbour.
- (3) Paragraph (2) shall not apply to the use, retention on board, storage or transportation of a dredge on any occasion when all of the following conditions are met:
 - (a) The use, retention on board, storage or transportation of the dredge by the vessel is authorised by a permit issued under paragraph (5) of this byelaw;
 - (b) The holder of the permit is a shareholder of the vessel;
 - (c) The holder of the permit is on board the vessel when the dredge is in use or is being transported;
 - (d) The permit is carried on the vessel;

- (e) The permit is produced for inspection when requested by an Inshore Fisheries Conservation Officer of the Authority or any other person authorised by the Authority to make such a request; and
- (f) All the conditions attached to the permit are being complied with.

- (4) Paragraph (2) shall not apply to the use, retention on board, storage or transportation of a dredge on any occasion when all of the following conditions are met:
- (a) That use, retention on board, storage or transportation, as the case may be, of the dredge by the vessel is authorised by written dispensation issued under paragraph (13);
 - (b) The dispensation is produced for inspection when requested by an Inshore Fisheries and Conservation Officer of the Authority or any other person authorised by the Authority to make such a request; and
 - (c) The use, retention on board, storage or transportation of the dredge is for the purpose for which the dispensation was issued.

Permits

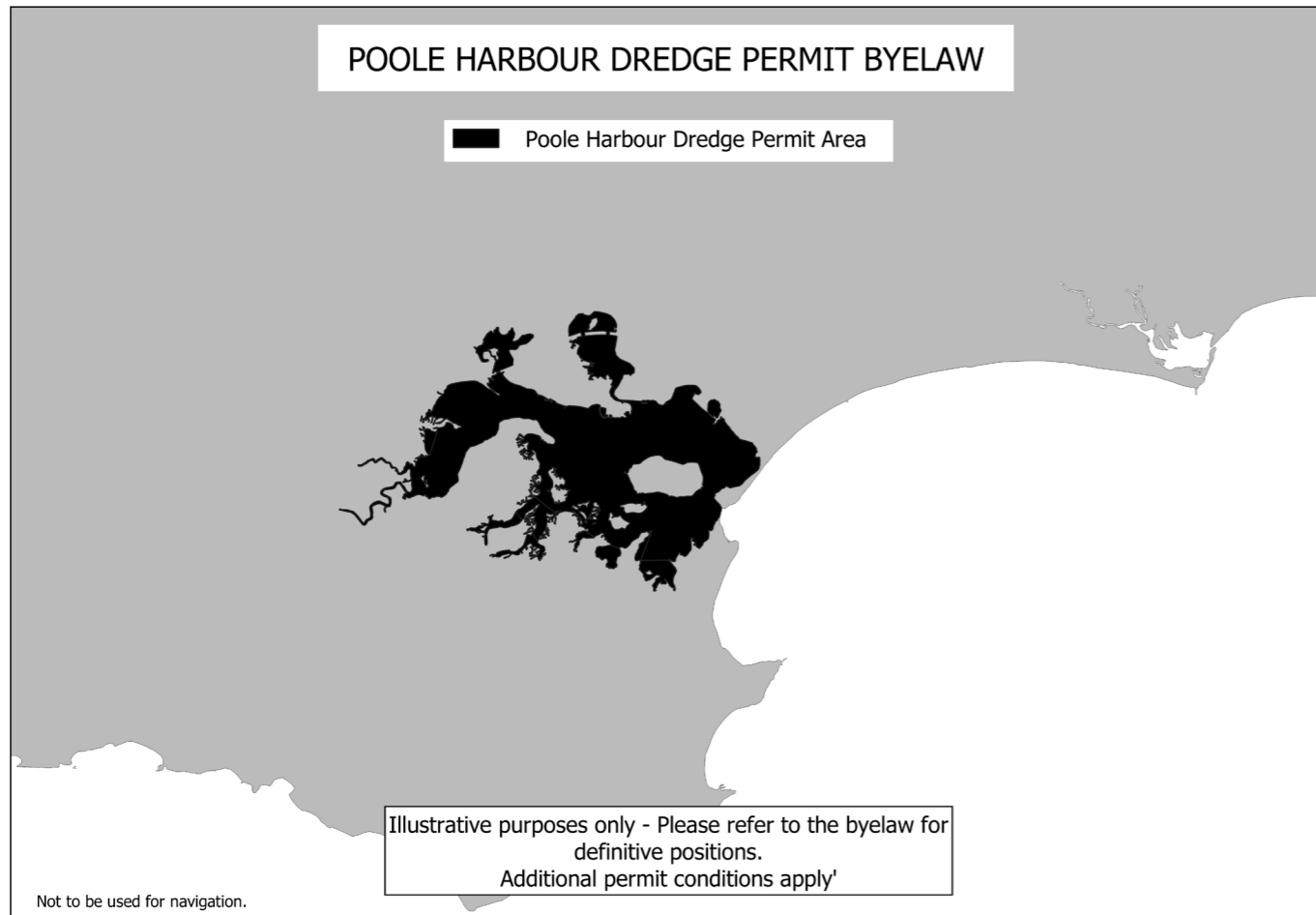
- (5) The Authority may issue a permit in respect of any relevant fishing vessel authorising the use of a dredge to fish for or take shellfish within Poole Harbour in accordance with paragraphs (6) to (12) provided that all the following conditions are satisfied in relation to the application for the permit:
- (a) It is made in respect of a named relevant fishing vessel;
 - (b) It is made:
 - (i) by a person who holds the majority of shares in the named relevant fishing vessel for which the application is made, as recorded on the vessel's certificate of registry; or
 - (ii) by no more than two shareholders as have been nominated in writing for that purpose by shareholders who hold a majority of shares in the named relevant fishing vessel as recorded on the vessel's certificate of registry
 - (c) It is made using the printed forms available from the Authority.
- (6) A permit issued under paragraph (5):
- (a) Shall be issued to the applicant ("the permit holder") in respect of a named vessel;
 - (b) is not transferable from the permit holder to another person or from the named vessel to another vessel;
 - (c) remains the property of the Authority; and
 - (d) is valid for the period stated in the permit up to a maximum of one year and is not renewable.
- (7) The Authority may charge a fee of no greater than £1,000 for each permit.
- (8) The Authority may limit the number of permits that it may grant.

Permit Conditions

- (9) The Authority may attach to the permit such conditions as it considers appropriate and in particular conditions relating to the following matters:
- (a) Catch restrictions and reporting;
 - (b) Gear types;
 - (c) Gear construction and restrictions;
 - (d) Spatial and temporal restrictions;
 - (e) The fitting of specified equipment to vessels.
- (10) At any time after a permit has been issued, the Authority may
- (a) Attach conditions to it;
 - (b) Vary or revoke conditions attached to it.
- (11) The Authority shall review the suitability of permit conditions, permit fees and limitations on the number of permits every three years or sooner in accordance with the following procedure:
- (a) a consultation meeting will be held with permit holders to present available data and discuss options;
 - (b) the Authority will decide what changes, if any, are required to the permit conditions or permit fees, having regard to:
 - (i) the Authority's duties and obligations under sections 153 and 154 of the Marine and Coastal Access Act 2009;
 - (ii) any available scientific and survey data;
 - (iii) any statutory advice given by Natural England;
 - (iv) any Habitats Regulations Assessment;
 - (v) an Impact Assessment relating to any proposed changes to additional permit conditions or permit fees;
 - (vi) any feedback received from consultation with permit holders under sub - paragraph (a);
 - (c) the outcome of the review will be notified by the Authority to permit holders.
- (12) The Authority shall, when attaching any conditions under paragraph (10) to any permits issued prior to the first review under paragraph (11) following the coming into force of this byelaw, have regard to the Impact Assessment that accompanies this byelaw.

Dispensations

- (13) The Authority may issue a written dispensation to any vessel authorising the use, retention on board, storage or transportation of a dredge within Poole Harbour for any of the following purposes:
- (a) Scientific, stocking or breeding purposes; or
 - (b) Accessing fishing grounds outside Poole Harbour; or
 - (c) Accessing or fishing within any several fishery within Poole Harbour



Poole Harbour Shellfish Hand Gathering Byelaw

The Authority for the Southern Inshore Fisheries and Conservation District, in exercise of the powers conferred by sections 155 and 156 of the Marine and Coastal Access Act 2009 hereby makes the following byelaw for that District.

Definitions

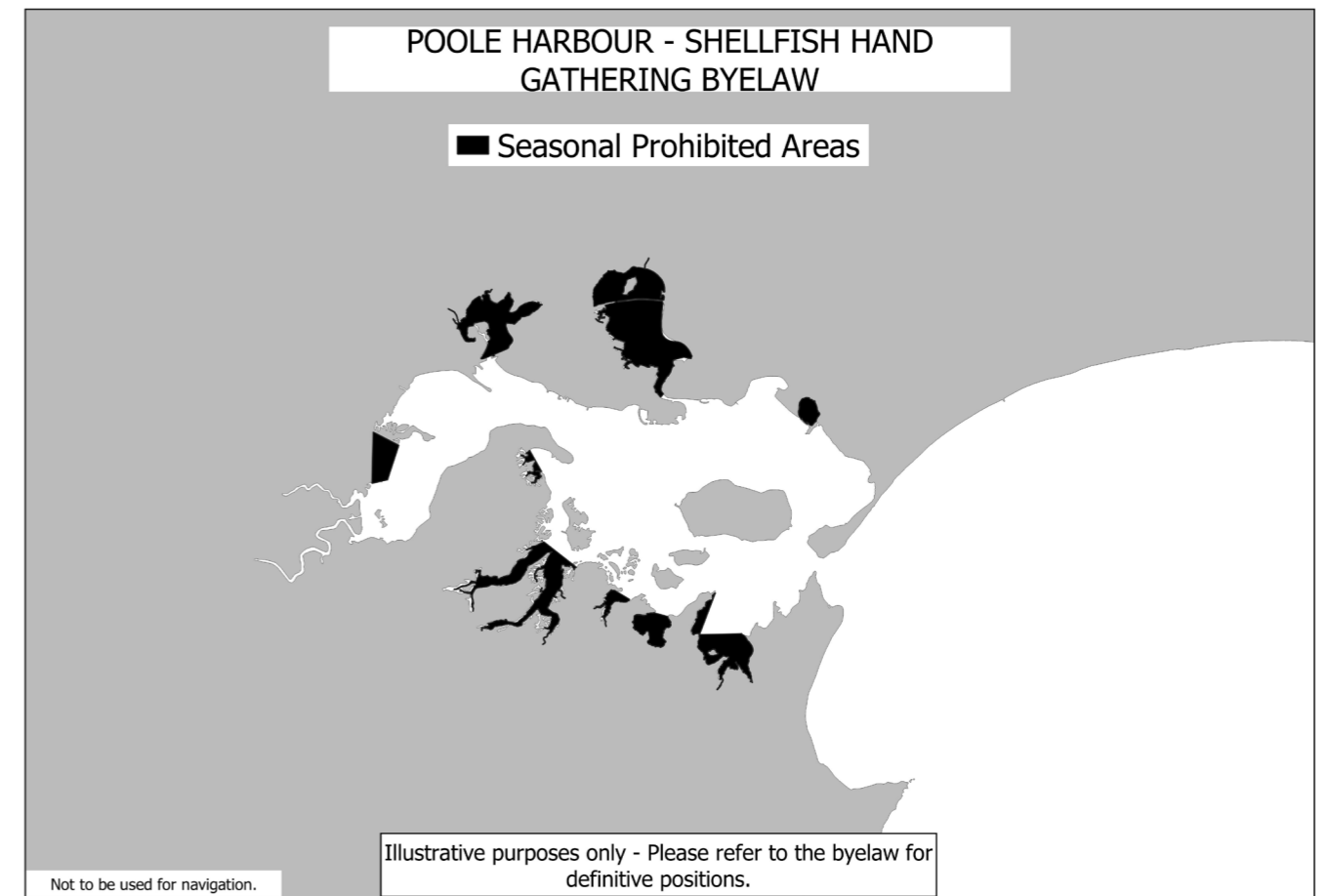
- (1) In this byelaw:
- (a) "the Authority" means the Southern Inshore Fisheries and Conservation Authority as defined in Articles 2 and 4 of the Southern Inshore Fisheries and Conservation Order 2010 (SI 2010 No 2198);
 - (b) "the District" means the area defined in Articles 2 and 3 of the Southern Inshore Fisheries and Conservation Order 2010 (SI 2010 No 2198).

Prohibition

- (2) Within the areas defined in the Schedule, between 1st November to 31st March, a person must not:
- (a) Fish for or take from a fishery shellfish of any kind:
 - (i) By hand picking; or
 - (ii) Using a handrake or similar instrument.
 - (b) Transport a handrake or other similar instrument.

Exceptions

- (3) This byelaw shall not apply to a person performing an act which would otherwise constitute an offence against this byelaw, if that act was carried out in accordance with a written dispensation issued by the Authority authorising that act for scientific, stocking or breeding purposes.



Schedule

Definition of Prohibited Areas

Area 1 - Newton Bay

The area enclosed by a line drawn from:

Point 1 (50 Degrees 40.351 Minutes North, 001 Degrees 59.493 Minutes West) to
Point 2 (50 Degrees 40.402 Minutes North, 001 Degrees 59.750 Minutes West)
From point 2 along the coast at the level of mean high water spring tide to point 1

Area 2 - Ower Bay

The area enclosed by a line drawn from:

Point 3 (50 Degrees 40.522 minutes North, 002 Degrees 00.101 minutes West) to
Point 4 (50 Degrees 40.670 minutes North, 002 Degrees 00.464 minutes West)
From point 3 along the coast at the level of mean high water spring tide to point 4

Area 3 - Wych Lake and Middlebere Lake

The area enclosed by a line drawn from:

Point 5 (50 Degrees 41.255 minutes North, 002 Degrees 01.755 minutes West) to
Point 6 (50 Degrees 40.891 minutes North, 002 Degrees 01.030 minutes West)
From point 6 along the coast at the level of mean high water spring tide to point 5

Area 4 - Arne Bay

The area enclosed by a line drawn from:

Point 7 (50 Degrees 41.950 minutes North, 002 Degrees 01.640 minutes West) to
Point 8 (50 Degrees 42.199 minutes North, 002 Degrees 01.849 minutes West)
From point 8 along the coast at the level of mean high water spring tide to point 7

Area 5 - Keyworth

The area enclosed by a line drawn from:

Point 9 (50 Degrees 42.400 minutes North, 002 Degrees 04.510 minutes West) to
Point 10 (50 Degrees 42.250 minutes North, 002 Degrees 04.075 minutes West) to
Point 11 (50 Degrees 41.843 minutes North, 002 Degrees 04.545 minutes West) to
Point 12 (50 Degrees 41.881 minutes North, 002 Degrees 04.272 minutes West)
From point 12 along the coast at the level of mean high water spring tide to point 9

Area 6 - Brands Bay South

The area enclosed by a line drawn from:

Point 13 (50 Degrees 40.156 minutes North, 001 Degrees 58.984 minutes West) to
Point 14 (50 Degrees 40.156 minutes North, 001 Degrees 58.249 minutes West)
From point 13 along the coast at the level of mean high water spring tide to point 14

Area 7 - Brands Bay West

The area enclosed by a line drawn from:

Point 13 (50 Degrees 40.156 minutes North, 001 Degrees 58.984 minutes West) to
Point 15 (50 Degrees 40.610 minutes North, 001 Degrees 58.702 minutes West)
From point 15 along the coast at the level of mean high water spring tide to point 13

Area 8 - Holes Bay

The area enclosed by a line drawn from:

Point 16 (50 Degrees 42.771 minutes North, 001 Degrees 59.539 minutes West) to
Point 17 (50 Degrees 42.734 minutes North, 001 Degrees 59.591 minutes West)
From point 16 along the coast at the level of mean high water spring tide to point 17

Area 9 - Blue Lagoon

The area enclosed by a line drawn from:

Point 18 (50 Degrees 42.488 minutes North, 001 Degrees 57.207 minutes West) to
Point 19 (50 Degrees 42.478 minutes North, 001 Degrees 57.193 minutes West)
From point 18 along the coast at the level of mean high water spring tide to point 19

Area 10 - Lytchett Bay

The area enclosed by a line drawn from:

Point 20 (50 Degrees 43.212 minutes North, 002 Degrees 02.412 minutes West) to

Point 21 (50 Degrees 43.205 minutes North, 002 Degrees 02.439 minutes West)

From point 21 along the coast at the level of mean high water spring tide to point 20

Explanatory Note

(This note is not part of the Byelaw)

This byelaw is limited to certain defined areas of Poole Harbour. Its purpose is to manage the gathering of shellfish of any kind, including cockles and clams, through the use of a handrake or other similar instrument or by hand gathering, in those areas. The byelaw prohibits fishing for or taking shellfish by hand and the use or transportation of a handrake or other similar instrument, for fishing purposes within those areas at certain times of the year.

Prohibition of Gathering (Sea Fisheries Resources) in Seagrass Beds

The Authority for the Southern Inshore Fisheries and Conservation District, in exercise of the powers conferred by sections 155 and 156 of the Marine and Coastal Access Act 2009 hereby makes the following byelaw for that District.

Definitions

(1) In this byelaw:

- (a) "The Authority" means the Southern Inshore Fisheries and Conservation Authority as defined in Articles 2 and 4 of the Southern Inshore Fisheries and Conservation Order 2010 (SI 2010 No /2198);
- (b) "the District" means the Southern Inshore Fisheries and Conservation District as defined in Articles 2 and 3 of the Southern Inshore Fisheries and Conservation Order 2010 (SI 2010 No. /2198).
- (c) "the prohibited areas" means the areas set out in the Schedule to this Byelaw.

Prohibitions

- (2) No person shall dig for, fish for or take any sea fisheries resource in or from the prohibited areas.
- (3) The prohibition in paragraph 2 does not apply to the fishing for or taking of sea fisheries resources:
 - (a) by means of a net;
 - (b) by means of a rod and line; or
 - (c) by means of a hook and line.
- (4) The prohibition in paragraph 2 does not apply to the fishing for or taking of sea fisheries resources using a vessel, provided that no part of the vessel's hull is in contact with the seabed.
- (5) No person shall have with them in the prohibited areas any rake, spade, fork or any similar tool.
- (6) The prohibition in paragraph 2 and 3 does not apply above the level of mean high spring water tide.
- (7) This byelaw shall not apply to any person performing an act which would otherwise constitute an offence against this byelaw, if that act was carried out in accordance with a written permission issued by Southern Inshore Fisheries and Conservation Authority permitting that act for scientific, stocking or breeding purposes.

Schedule

Definition of "the prohibited areas"

Area 1 - Chichester Harbour

The area enclosed by a line drawn from:

Point 1 (50 Degrees 48.957 minutes North, 000 Degrees 56.902 minutes West) to

Point 2 (50 Degrees 48.337 minutes North, 000 Degrees 56.666 minutes West) to

Point 3 (50 Degrees 48.223 minutes North, 000 Degrees 56.977 minutes West) to

Point 4 (50 Degrees 48.285 minutes North, 000 Degrees 57.357 minutes West) to

Point 5 (50 Degrees 48.398 minutes North, 000 Degrees 57.432 minutes West) to

Point 6 (50 Degrees 48.509 minutes North, 000 Degrees 57.336 minutes West) to

Point 7 (50 Degrees 48.711 minutes North, 000 Degrees 57.405 minutes West) to

Point 8 (50 Degrees 49.032 minutes North, 000 Degrees 57.030 minutes West).

Point 8 is then joined by a line to Point 1.

Area 2 - Chichester Harbour

The area enclosed by a line drawn from:

Point 9 (50 Degrees 48.664 minutes North, 000 Degrees 57.858 minutes West) to
 Point 10 (50 Degrees 48.606 minutes North, 000 Degrees 57.819 minutes West) to
 Point 11 (50 Degrees 48.633 minutes North, 000 Degrees 57.660 minutes West) to
 Point 12 (50 Degrees 48.586 minutes North, 000 Degrees 57.595 minutes West) to
 Point 13 (50 Degrees 48.409 minutes North, 000 Degrees 57.599 minutes West) to
 Point 14 (50 Degrees 48.420 minutes North, 000 Degrees 57.796 minutes West) to
 Point 15 (50 Degrees 48.522 minutes North, 000 Degrees 57.728 minutes West) to
 Point 16 (50 Degrees 48.580 minutes North, 000 Degrees 57.949 minutes West) to
 Point 17 (50 Degrees 48.641 minutes North, 000 Degrees 58.044 minutes West).
 Point 17 is then joined by a line to Point 9.

Area 3 - Chichester Harbour

The area enclosed by a line drawn from:

Point 18 (50 Degrees 48.164 minutes North, 000 Degrees 57.929 minutes West) to
 Point 19 (50 Degrees 48.195 minutes North, 000 Degrees 57.970 minutes West) to
 Point 20 (50 Degrees 48.323 minutes North, 000 Degrees 57.875 minutes West) to
 Point 21 (50 Degrees 48.311 minutes North, 000 Degrees 57.821 minutes West) to
 Point 22 (50 Degrees 48.206 minutes North, 000 Degrees 57.861 minutes West).
 From point 22 along the coast at the level of mean high spring water tide to point 18.

Area 4 - Chichester Harbour

The area enclosed by a line drawn from:

Point 23 (50 Degrees 47.786 minutes North, 000 Degrees 57.380 minutes West) to
 Point 24 (50 Degrees 47.665 minutes North, 000 Degrees 56.604 minutes West) to
 Point 25 (50 Degrees 47.068 minutes North, 000 Degrees 56.650 minutes West)
 From point 25 along the coast at the level of mean high spring water tide to point 26.
 Point 26 (50 Degrees 46.976 minutes North, 000 Degrees 57.016 minutes West) to
 Point 27 (50 Degrees 47.050 minutes North, 000 Degrees 57.077 minutes West)
 From point 27 along the coast at the level of mean high spring water tide to point 28.
 Point 28 (50 Degrees 47.365 minutes North, 000 Degrees 57.396 minutes West) to
 Point 29 (50 Degrees 47.655 minutes North, 000 Degrees 57.323 minutes West).
 From point 29 along the coast at the level of mean high spring water tide to point 23.

Area 5 - Langstone Harbour

The area enclosed by a line drawn from:

Point 30 (50 Degrees 48.837 minutes North, 000 Degrees 59.224 minutes West) to
 Point 31 (50 Degrees 48.666 minutes North, 000 Degrees 59.376 minutes West) to
 Point 32 (50 Degrees 48.331 minutes North, 000 Degrees 59.415 minutes West) to
 Point 33 (50 Degrees 48.241 minutes North, 000 Degrees 59.389 minutes West) to
 Point 34 (50 Degrees 48.128 minutes North, 000 Degrees 59.463 minutes West) to
 Point 35 (50 Degrees 48.027 minutes North, 000 Degrees 59.637 minutes West) to
 Point 36 (50 Degrees 47.897 minutes North, 000 Degrees 59.698 minutes West) to
 Point 37 (50 Degrees 47.733 minutes North, 000 Degrees 59.965 minutes West) to
 Point 38 (50 Degrees 47.722 minutes North, 001 Degrees 00.179 minutes West) to
 Point 39 (50 Degrees 47.651 minutes North, 001 Degrees 00.313 minutes West) to
 Point 40 (50 Degrees 47.705 minutes North, 001 Degrees 00.520 minutes West) to
 Point 41 (50 Degrees 47.936 minutes North, 001 Degrees 00.513 minutes West) to
 Point 42 (50 Degrees 48.028 minutes North, 001 Degrees 00.130 minutes West) to
 Point 43 (50 Degrees 47.938 minutes North, 000 Degrees 59.929 minutes West) to
 Point 44 (50 Degrees 47.953 minutes North, 000 Degrees 59.892 minutes West) to
 Point 45 (50 Degrees 48.135 minutes North, 000 Degrees 59.954 minutes West) to
 Point 46 (50 Degrees 48.246 minutes North, 000 Degrees 59.520 minutes West) to
 Point 47 (50 Degrees 48.450 minutes North, 001 Degrees 00.061 minutes West) to
 Point 48 (50 Degrees 48.788 minutes North, 000 Degrees 59.618 minutes West) to
 Point 49 (50 Degrees 48.689 minutes North, 000 Degrees 59.470 minutes West) to
 Point 50 (50 Degrees 48.877 minutes North, 000 Degrees 59.301 minutes West).
 Point 50 is then joined by a line to Point 30.

Area 6 - Langstone Harbour

The area enclosed by a line drawn from:

Point 51 (50 Degrees 50.077 minutes North, 001 Degrees 02.354 minutes West) to
Point 52 (50 Degrees 50.031 minutes North, 001 Degrees 02.296 minutes West) to
Point 53 (50 Degrees 50.002 minutes North, 001 Degrees 02.369 minutes West) to
Point 54 (50 Degrees 49.970 minutes North, 001 Degrees 02.339 minutes West) to
Point 55 (50 Degrees 49.903 minutes North, 001 Degrees 02.429 minutes West) to
Point 56 (50 Degrees 50.003 minutes North, 001 Degrees 02.539 minutes West) to
Point 56 is then joined by a line to point 51.

Point 57 (50 Degrees 49.989 minutes North, 001 Degrees 02.301 minutes West) to
Point 58 (50 Degrees 49.917 minutes North, 001 Degrees 02.179 minutes West) to
Point 59 (50 Degrees 49.823 minutes North, 001 Degrees 02.316 minutes West) to
Point 60 (50 Degrees 49.876 minutes North, 001 Degrees 02.379 minutes West).

Point 60 is then joined by a line to Point 57.

Area 7 - Langstone Harbour

The area enclosed by a line drawn from:

Point 61 (50 Degrees 49.745 minutes North, 001 Degrees 02.167 minutes West) to
Point 62 (50 Degrees 49.711 minutes North, 001 Degrees 01.920 minutes West) to
Point 63 (50 Degrees 49.579 minutes North, 001 Degrees 01.900 minutes West) to
Point 64 (50 Degrees 49.360 minutes North, 001 Degrees 01.559 minutes West) to
Point 65 (50 Degrees 49.074 minutes North, 001 Degrees 01.473 minutes West) to
Point 66 (50 Degrees 48.950 minutes North, 001 Degrees 01.808 minutes West) to
Point 67 (50 Degrees 49.194 minutes North, 001 Degrees 02.104 minutes West) to
Point 68 (50 Degrees 49.379 minutes North, 001 Degrees 01.899 minutes West) to
Point 69 (50 Degrees 49.543 minutes North, 001 Degrees 02.128 minutes West) to
Point 70 (50 Degrees 49.521 minutes North, 001 Degrees 02.236 minutes West) to
Point 71 (50 Degrees 49.555 minutes North, 001 Degrees 02.276 minutes West).

Point 71 is then joined by a line to Point 61.

Area 8 - Portsmouth Harbour

The area enclosed by a line drawn from:

Point 72 (50 Degrees 50.565 minutes North, 001 Degrees 09.331 minutes West) to
Point 73 (50 Degrees 50.440 minutes North, 001 Degrees 09.700 minutes West) to
Point 74 (50 Degrees 50.575 minutes North, 001 Degrees 09.758 minutes West) to
Point 75 (50 Degrees 50.631 minutes North, 001 Degrees 09.670 minutes West) to
Point 76 (50 Degrees 50.661 minutes North, 001 Degrees 09.429 minutes West).

Point 76 is then joined by a line to Point 72.

Area 9 - Portsmouth Harbour

The area enclosed by a line drawn from:

Point 77 (50 Degrees 50.336 minutes North, 001 Degrees 09.585 minutes West) to
Point 78 (50 Degrees 50.305 minutes North, 001 Degrees 09.548 minutes West) to
Point 79 (50 Degrees 50.270 minutes North, 001 Degrees 09.623 minutes West) to
Point 80 (50 Degrees 50.300 minutes North, 001 Degrees 09.653 minutes West).

Point 80 is then joined by a line to Point 77.

Area 10 - Portsmouth Harbour

The area enclosed by a line drawn from:

Point 81 (50 Degrees 50.279 minutes North, 001 Degrees 09.145 minutes West) to
Point 82 (50 Degrees 50.166 minutes North, 001 Degrees 09.063 minutes West) to
Point 83 (50 Degrees 50.150 minutes North, 001 Degrees 09.123 minutes West) to
Point 84 (50 Degrees 50.246 minutes North, 001 Degrees 09.215 minutes West).

Point 84 is then joined by a line to Point 81.

Area 11 - Portsmouth Harbour

The area enclosed by a line drawn from:

Point 85 (50 Degrees 50.249 minutes North, 001 Degrees 07.694 minutes West) to
Point 86 (50 Degrees 50.157 minutes North, 001 Degrees 07.660 minutes West) to
Point 87 (50 Degrees 49.774 minutes North, 001 Degrees 08.096 minutes West) to
Point 88 (50 Degrees 49.865 minutes North, 001 Degrees 08.402 minutes West) to
Point 89 (50 Degrees 50.370 minutes North, 001 Degrees 08.968 minutes West) to
Point 90 (50 Degrees 50.431 minutes North, 001 Degrees 08.770 minutes West).

From Point 90 along the coast at the level of mean high water spring tide to Point 85.

Area 12 - Portsmouth Harbour

The area enclosed by a line drawn from:

Point 91 (50 Degrees 49.769 minutes North, 001 Degrees 08.846 minutes West) to
 Point 92 (50 Degrees 49.697 minutes North, 001 Degrees 08.708 minutes West) to
 Point 93 (50 Degrees 49.643 minutes North, 001 Degrees 08.846 minutes West) to
 Point 94 (50 Degrees 49.734 minutes North, 001 Degrees 08.927 minutes West).
 Point 94 is then joined by a line to Point 91.

Area 13 - Portsmouth Harbour

The area enclosed by a line drawn from:

Point 95 (50 Degrees 50.012 minutes North, 001 Degrees 07.686 minutes West) to
 Point 96 (50 Degrees 49.944 minutes North, 001 Degrees 07.362 minutes West) to
 Point 97 (50 Degrees 49.872 minutes North, 001 Degrees 07.404 minutes West) to
 Point 98 (50 Degrees 49.962 minutes North, 001 Degrees 07.745 minutes West).
 Point 98 is then joined by a line to Point 95.

Area 14 - Portsmouth Harbour

The area enclosed by a line drawn from:

Point 99 (50 Degrees 49.467 minutes North, 001 Degrees 07.596 minutes West) to
 Point 100 (50 Degrees 49.422 minutes North, 001 Degrees 07.315 minutes West) to
 Point 101 (50 Degrees 49.338 minutes North, 001 Degrees 07.465 minutes West) to
 Point 102 (50 Degrees 49.249 minutes North, 001 Degrees 07.387 minutes West) to
 Point 103 (50 Degrees 49.263 minutes North, 001 Degrees 07.676 minutes West) to
 Point 104 (50 Degrees 49.400 minutes North, 001 Degrees 07.787 minutes West).
 Point 104 is then joined by a line to Point 99.

Area 15 - The Solent

The area enclosed by a line drawn from:

Point 105 (50 Degrees 49.404 minutes North, 001 Degrees 15.458 minutes West) to
 Point 106 (50 Degrees 49.218 minutes North, 001 Degrees 15.336 minutes West) to
 Point 107 (50 Degrees 49.198 minutes North, 001 Degrees 15.406 minutes West) to
 Point 108 (50 Degrees 49.578 minutes North, 001 Degrees 16.437 minutes West) to
 Point 109 (50 Degrees 49.658 minutes North, 001 Degrees 16.378 minutes West) to
 Point 110 (50 Degrees 49.628 minutes North, 001 Degrees 16.058 minutes West).
 Point 110 is then joined by a line to Point 105.

Area 16 - The Solent

The area enclosed by a line drawn from:

Point 111 (50 Degrees 48.552 minutes North, 001 Degrees 19.082 minutes West) to
 Point 112 (50 Degrees 48.431 minutes North, 001 Degrees 18.695 minutes West) to
 Point 113 (50 Degrees 48.205 minutes North, 001 Degrees 18.978 minutes West) to
 Point 114 (50 Degrees 48.107 minutes North, 001 Degrees 19.287 minutes West) to
 Point 115 (50 Degrees 47.959 minutes North, 001 Degrees 19.490 minutes West) to
 Point 116 (50 Degrees 47.905 minutes North, 001 Degrees 19.751 minutes West) to
 Point 117 (50 Degrees 47.814 minutes North, 001 Degrees 19.880 minutes West) to
 Point 118 (50 Degrees 47.854 minutes North, 001 Degrees 19.949 minutes West)
 From Point 118 along the coast at the level of mean high water spring tide to Point 119.
 Point 119 (50 Degrees 48.019 minutes North, 001 Degrees 19.828 minutes West) to
 Point 120 (50 Degrees 48.301 minutes North, 001 Degrees 19.343 minutes West) to
 Point 121 (50 Degrees 48.475 minutes North, 001 Degrees 19.235 minutes West).
 From Point 121 along the coast at the level of mean high water spring tide to Point 111.

Area 17 - The Isle of Wight

The area enclosed by a line drawn from:

Point 122 (50 Degrees 40.718 minutes North, 001 Degrees 04.065 minutes West) to
 Point 123 (50 Degrees 40.690 minutes North, 001 Degrees 04.179 minutes West) to
 Point 124 (50 Degrees 40.724 minutes North, 001 Degrees 04.206 minutes West) to
 Point 125 (50 Degrees 40.738 minutes North, 001 Degrees 04.153 minutes West) to
 Point 126 (50 Degrees 40.911 minutes North, 001 Degrees 04.249 minutes West) to
 Point 127 (50 Degrees 40.927 minutes North, 001 Degrees 04.162 minutes West).
 Point 127 is then joined by a line to Point 122.

Area 18 - The Isle of Wight

The area enclosed by a line drawn from:

Point 128 (50 Degrees 41.112 minutes North, 001 Degrees 03.923 minutes West) to
 Point 129 (50 Degrees 41.006 minutes North, 001 Degrees 04.146 minutes West) to
 Point 130 (50 Degrees 41.058 minutes North, 001 Degrees 04.163 minutes West) to
 Point 131 (50 Degrees 41.124 minutes North, 001 Degrees 04.023 minutes West) to
 Point 132 (50 Degrees 41.537 minutes North, 001 Degrees 04.600 minutes West) to
 Point 133 (50 Degrees 41.726 minutes North, 001 Degrees 05.027 minutes West) to
 Point 134 (50 Degrees 41.746 minutes North, 001 Degrees 04.920 minutes West) to
 Point 135 (50 Degrees 41.671 minutes North, 001 Degrees 04.664 minutes West) to
 Point 136 (50 Degrees 41.442 minutes North, 001 Degrees 04.238 minutes West).
 Point 136 is then joined by a line to Point 128.

Area 19 - The Isle of Wight

The area enclosed by a line drawn from:

Point 137 (50 Degrees 41.871 minutes North, 001 Degrees 05.064 minutes West) to
 Point 138 (50 Degrees 41.783 minutes North, 001 Degrees 05.207 minutes West) to
 Point 139 (50 Degrees 41.940 minutes North, 001 Degrees 05.404 minutes West) to
 Point 140 (50 Degrees 41.923 minutes North, 001 Degrees 05.612 minutes West) to
 Point 141 (50 Degrees 41.990 minutes North, 001 Degrees 05.751 minutes West) to
 Point 142 (50 Degrees 42.072 minutes North, 001 Degrees 05.712 minutes West) to
 Point 143 (50 Degrees 42.065 minutes North, 001 Degrees 05.540 minutes West) to
 Point 144 (50 Degrees 41.988 minutes North, 001 Degrees 05.504 minutes West) to
 Point 145 (50 Degrees 42.085 minutes North, 001 Degrees 05.162 minutes West).
 Point 145 is then joined by a line to Point 137.

Area 20 - The Isle of Wight

The area enclosed by a line drawn from:

Point 146 (50 Degrees 42.275 minutes North, 001 Degrees 05.056 minutes West) to
 Point 147 (50 Degrees 42.276 minutes North, 001 Degrees 05.122 minutes West) to
 Point 148 (50 Degrees 42.327 minutes North, 001 Degrees 05.157 minutes West) to
 Point 149 (50 Degrees 42.343 minutes North, 001 Degrees 05.065 minutes West).
 Point 149 is then joined by a line to Point 146.

Area 21 - The Isle of Wight

The area enclosed by a line drawn from:

Point 150 (50 Degrees 42.567 minutes North, 001 Degrees 06.050 minutes West) to
 Point 151 (50 Degrees 42.424 minutes North, 001 Degrees 05.871 minutes West) to
 Point 152 (50 Degrees 42.387 minutes North, 001 Degrees 05.969 minutes West) to
 Point 153 (50 Degrees 42.430 minutes North, 001 Degrees 06.058 minutes West) to
 Point 154 (50 Degrees 42.560 minutes North, 001 Degrees 06.102 minutes West).
 Point 154 is then joined by a line to Point 150.

Area 22 - The Isle of Wight

The area enclosed by a line drawn from:

Point 155 (50 Degrees 44.559 minutes North, 001 Degrees 08.753 minutes West) to
 Point 156 (50 Degrees 44.395 minutes North, 001 Degrees 09.000 minutes West) to
 Point 157 (50 Degrees 44.110 minutes North, 001 Degrees 09.047 minutes West) to
 Point 158 (50 Degrees 43.982 minutes North, 001 Degrees 09.207 minutes West) to
 Point 159 (50 Degrees 44.033 minutes North, 001 Degrees 09.405 minutes West) to
 Point 160 (50 Degrees 44.005 minutes North, 001 Degrees 09.550 minutes West) to
 Point 161 (50 Degrees 44.033 minutes North, 001 Degrees 09.625 minutes West) to
 Point 162 (50 Degrees 44.036 minutes North, 001 Degrees 09.923 minutes West) to
 Point 163 (50 Degrees 43.992 minutes North, 001 Degrees 10.217 minutes West) to
 Point 164 (50 Degrees 44.076 minutes North, 001 Degrees 10.392 minutes West) to
 Point 165 (50 Degrees 44.335 minutes North, 001 Degrees 10.544 minutes West).
 Point 165 is then joined by a straight line to Point 155.

Area 23 - The Isle of Wight

The area enclosed by a line drawn from:

Point 166 (50 Degrees 44.360 minutes North, 001 Degrees 12.440 minutes West) to
 Point 167 (50 Degrees 44.315 minutes North, 001 Degrees 12.624 minutes West) to
 Point 168 (50 Degrees 44.380 minutes North, 001 Degrees 12.690 minutes West) to
 Point 169 (50 Degrees 44.440 minutes North, 001 Degrees 13.190 minutes West) to
 Point 170 (50 Degrees 44.767 minutes North, 001 Degrees 14.247 minutes West) to
 Point 171 (50 Degrees 44.968 minutes North, 001 Degrees 14.700 minutes West) to
 Point 172 (50 Degrees 45.129 minutes North, 001 Degrees 14.841 minutes West) to
 Point 173 (50 Degrees 45.280 minutes North, 001 Degrees 15.365 minutes West) to
 Point 174 (50 Degrees 45.560 minutes North, 001 Degrees 15.588 minutes West) to
 Point 175 (50 Degrees 45.773 minutes North, 001 Degrees 15.873 minutes West) to
 Point 176 (50 Degrees 45.942 minutes North, 001 Degrees 16.327 minutes West) to
 Point 177 (50 Degrees 45.975 minutes North, 001 Degrees 16.292 minutes West) to
 Point 178 (50 Degrees 45.960 minutes North, 001 Degrees 16.099 minutes West) to
 Point 179 (50 Degrees 44.481 minutes North, 001 Degrees 12.514 minutes West).
 Point 179 is then joined by a straight line to Point 166.

Area 24 - The Isle of Wight

The area enclosed by a line drawn from:

Point 180 (50 Degrees 46.165 minutes North, 001 Degrees 17.157 minutes West) to
 Point 181 (50 Degrees 45.992 minutes North, 001 Degrees 16.677 minutes West) to
 Point 182 (50 Degrees 45.788 minutes North, 001 Degrees 17.317 minutes West) then
 From point 182 along the base of the breakwater until the northerly end of the breakwater to
 Point 183 (50 Degrees 45.932 minutes North, 001 Degrees 17.627 minutes West).
 Point 183 is then joined to point 180

Area 25 - The Isle of Wight

The area enclosed by a line drawn from:

Point 184 (50 Degrees 44.540 minutes North, 001 Degrees 21.121 minutes West) to
 Point 185 (50 Degrees 44.521 minutes North, 001 Degrees 21.102 minutes West) to
 Point 186 (50 Degrees 44.371 minutes North, 001 Degrees 21.336 minutes West) to
 Point 187 (50 Degrees 44.365 minutes North, 001 Degrees 21.592 minutes West) to
 Point 188 (50 Degrees 44.321 minutes North, 001 Degrees 21.774 minutes West) to
 Point 189 (50 Degrees 44.392 minutes North, 001 Degrees 21.745 minutes West) to
 Point 190 (50 Degrees 44.477 minutes North, 001 Degrees 21.538 minutes West) to
 Point 191 (50 Degrees 44.477 minutes North, 001 Degrees 21.293 minutes West).
 Point 191 is then joined by a straight line to Point 184.

Area 26 - Poole Harbour

The area enclosed by a line drawn from:

Point 192 (50 Degrees 42.259 minutes North, 001 Degrees 57.025 minutes West) to
 Point 193 (50 Degrees 42.220 minutes North, 001 Degrees 56.867 minutes West) to
 Point 194 (50 Degrees 42.112 minutes North, 001 Degrees 56.788 minutes West) to
 Point 195 (50 Degrees 42.041 minutes North, 001 Degrees 56.590 minutes West) to
 Point 196 (50 Degrees 42.011 minutes North, 001 Degrees 56.554 minutes West) to
 Point 197 (50 Degrees 42.020 minutes North, 001 Degrees 56.815 minutes West) to
 Point 198 (50 Degrees 42.216 minutes North, 001 Degrees 57.092 minutes West).
 Point 198 is then joined by a straight line to Point 192.

Area 27 - Poole Harbour

The area enclosed by a line drawn from:

Point 199 (50 Degrees 41.831 minutes North, 001 Degrees 56.719 minutes West) to
 Point 200 (50 Degrees 41.832 minutes North, 001 Degrees 56.569 minutes West) to
 Point 201 (50 Degrees 41.645 minutes North, 001 Degrees 56.532 minutes West) to
 Point 202 (50 Degrees 41.562 minutes North, 001 Degrees 56.353 minutes West) to
 Point 203 (50 Degrees 41.440 minutes North, 001 Degrees 56.449 minutes West) to
 Point 204 (50 Degrees 41.348 minutes North, 001 Degrees 56.635 minutes West) to
 Point 205 (50 Degrees 41.382 minutes North, 001 Degrees 56.882 minutes West).
 Point 205 is then joined by a straight line to Point 199.

Area 28 - Poole Harbour

The area enclosed by a line drawn from:

Point 206 (50 Degrees 41.611 minutes North, 001 Degrees 56.265 minutes West) to
Point 207 (50 Degrees 41.608 minutes North, 001 Degrees 56.217 minutes West) to
Point 208 (50 Degrees 41.559 minutes North, 001 Degrees 56.255 minutes West) to
Point 209 (50 Degrees 41.570 minutes North, 001 Degrees 56.310 minutes West).
Point 209 is then joined by a straight line to Point 206.

Area 29 - The Fleet

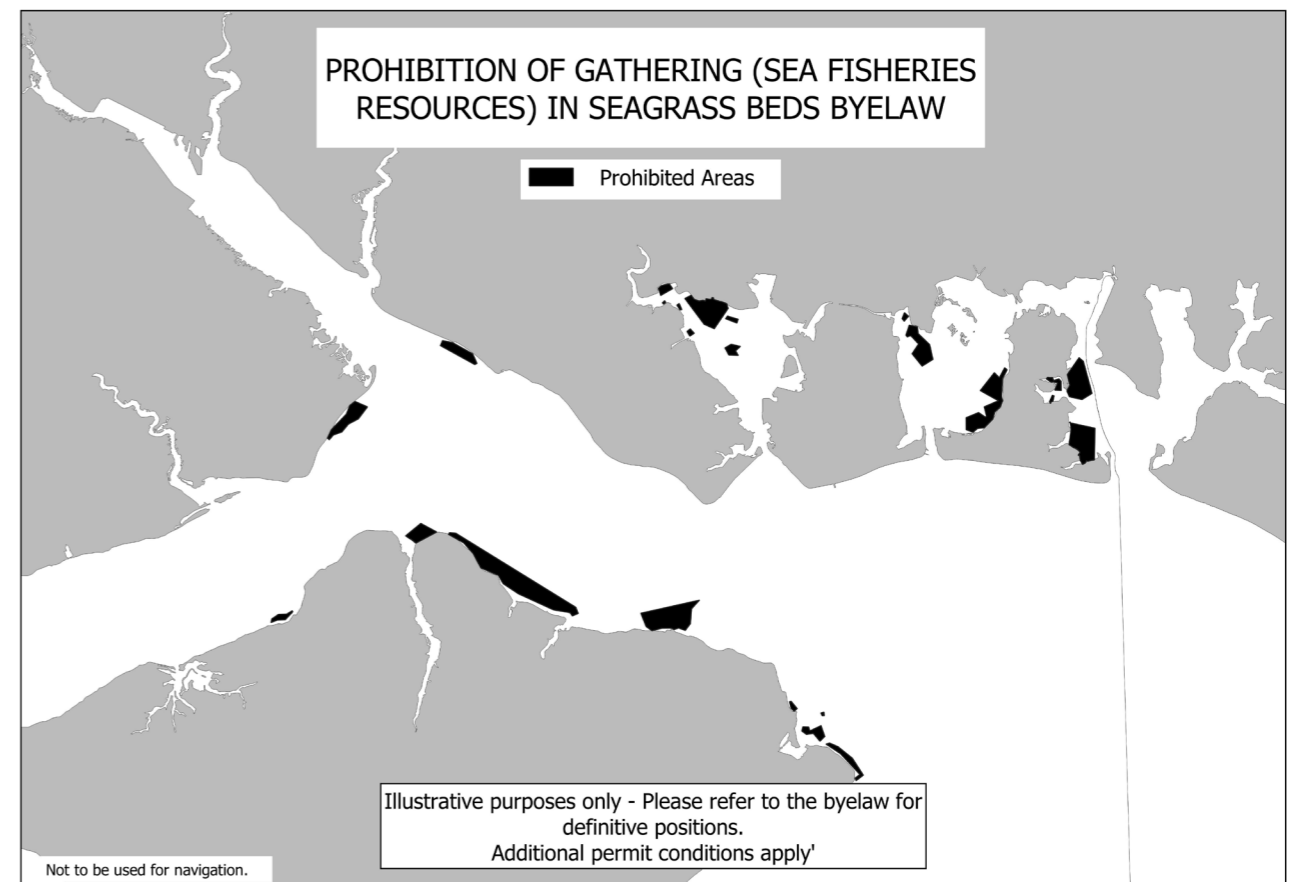
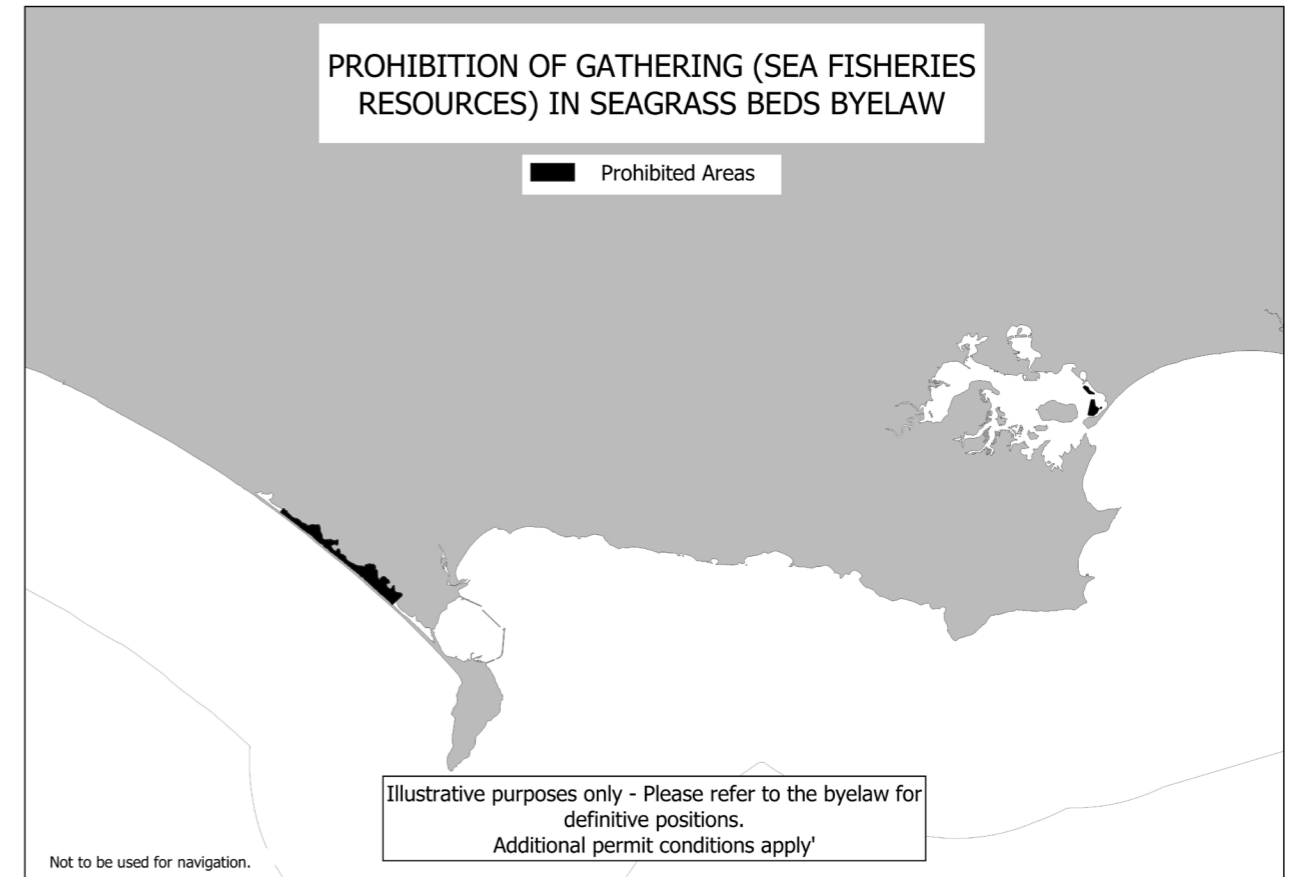
The area enclosed by a line drawn from:

Point 210 (50 Degrees 36.109 minutes North, 002 Degrees 29.734 minutes West) to
Point 211 (50 Degrees 35.843 minutes North, 002 Degrees 30.195 minutes West)
From point 211 along the coast at the level of mean high water spring tide to point 212
Point 212 (50 Degrees 38.772 minutes North, 002 Degrees 35.498 minutes West) to
Point 213 (50 Degrees 38.768 minutes North, 002 Degrees 35.384 minutes West).
From Point 213 along the coast at the level of mean high water spring tide to Point 210.

Explanatory Note

(This note is not part of the Byelaw)

All coordinates are based on WGS 84. The WGS 84 means the World Geodetic System, as revised in 1984 and further revised in 2004.



Protection of Berried (Egg Bearing) Lobsters

- (1) This byelaw applies throughout the Southern Sea Fisheries District.
- (2) No person shall remove from the fishery any berried lobster of the species *Homarus gammarus*.
- (3) Any berried lobster so berried shall be immediately returned to the sea, as near as possible to the place from which it was taken.
- (4) For the purpose of this byelaw "berried" shall mean the carrying of any eggs or spawn attached to the tail or some other exterior part of the lobster, or such a condition as to show at the time when it was taken the animal was carrying eggs or spawn so attached.
- (5) Provided that this byelaw shall not apply to any person removing berried lobster for scientific purposes, under the written authority of the Southern Sea Fisheries Committee and in accordance with the conditions contained in that authority.
- (6) This byelaw does not prejudicially affect any right of several fishery under the Sea Fisheries (Shellfish) Act 1967.

Redeposit of Shellfish

Any person who takes any shellfish, the removal of which from a fishery is prohibited by any byelaw in force in the District, or the possession of which is prohibited by any Act of Parliament or Statutory Instrument shall forthwith redeposit the same, without injury, as nearly as possible in the place from which it was taken.

This byelaw does not prejudicially affect any right of several fishery under the Sea Fisheries (Shellfish) Act 1967.

Scallop Fishing Byelaw 2019

The Authority for the Southern Inshore Fisheries and Conservation District, in exercise of the powers conferred by sections 155 and 156 of the Marine and Coastal Access Act 2009 hereby make the following byelaw for that District.

Interpretation

- (1) In this byelaw:
 - (a) "District" means the area defined in Articles 2 and 3 of the Southern Inshore Fisheries and Conservation Order 2010 (SI 2010 No 2198);
 - (b) "scallop" refers to the species *Pecten maximus*;
 - (c) "Solent" refers to the area defined in the Schedule;
 - (d) "The Authority" means the Southern Inshore Fisheries and Conservation Authority (IFCA) as defined in Articles 2 and 4 of the Southern Inshore Fisheries and Conservation Order 2010.

Prohibitions

- (2) A person must not fish for or take any scallop from any fishery within the District on any day before 0700 local time or after 1900 local time.
- (3) When dredging for scallop within the District:
 - (a) the maximum number of dredges which may be towed at any time is twelve;
 - (b) all dredges must be fitted with a spring-loaded tooth bar and the mouth of any dredge must not exceed 85 centimetres in overall width;
 - (c) no more than two tow bars may be used at any time;
 - (d) the maximum length of any tow bar must not exceed 5.18 metres including attachments.

Exceptions

- (4) Paragraph (2) does not apply within the Solent.
- (5) In the Solent, a person must not fish for or take any scallop from any fishery on any day before 0600 local time or after 1800 local time.
- (6) Paragraphs (2) and (3) do not apply when a written dispensation is issued under paragraph (7) and the authorisation is valid in accordance with paragraph (8).

Dispensations

- (7) The Authority may issue a dispensation for either scientific, educational, stocking or breeding purposes.
- (8) The dispensation will only be valid if:
 - (a) fishing operations undertaken are in accordance with the purpose for which the dispensation was issued;
 - (b) the dispensation is carried on board and produced for inspection when requested by an Inshore Fisheries and Conservation Officer of the Authority or any other person authorised by the Authority to make such a request.

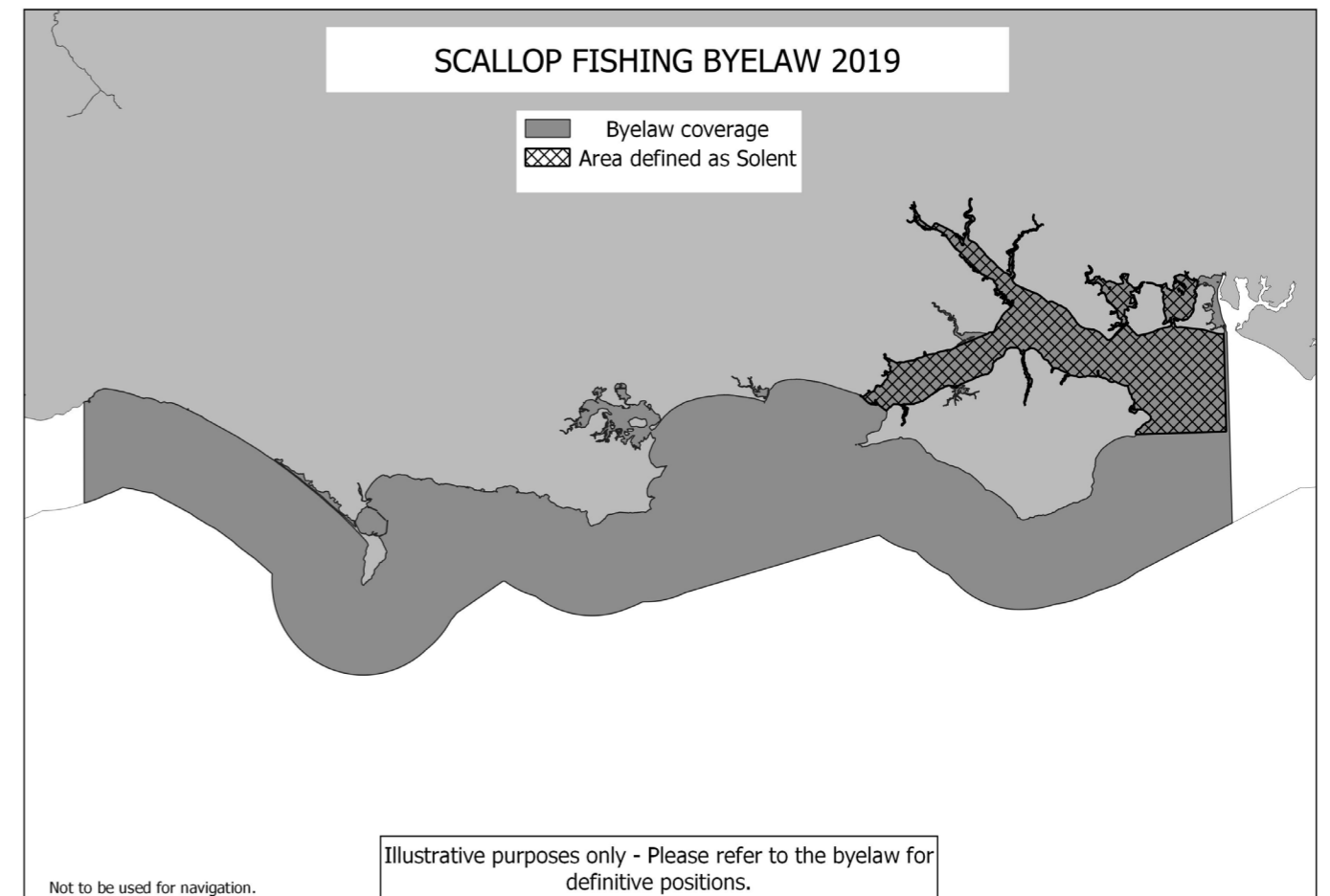
Explanatory Note

(This note is not part of the Byelaw)

The purpose of this byelaw is to manage the harvesting of scallops via dredge within the Southern IFCA District through gear specification and daily curfews. The byelaw seeks to support the development of sustainable bivalve fisheries. The byelaw includes an exception for the Solent. The Solent is therefore exempt of the District wide 1900 to 0700 curfew but subject to the 1800 to 0600 curfew set out in the Southern IFCA Solent Dredge Permit Byelaw.

Schedule The Solent

"Solent" means that part of the district as lies below mean high water springs and the area enclosed by the following coordinates:
 from Hurst Point, POINT 1 (50° 42.430'N 001° 32.935'W);
 to Fort Victoria, POINT 2 (50° 41.973'N 001° 32.045'W);
 following mean high water springs to POINT 3 (50° 43.429'N 001° 24.712'W);
 following a straight line to POINT 4 (50° 43.436'N 001° 24.610'W),
 following mean high water springs to Culver Cliff, POINT 5 (50° 40.034'N 1° 5.747'W);
 following a straight line due east to POINT 6 (50° 40.065'N 0° 56.255'W);
 following a straight line due north to POINT 7 (50° 46.631'N 0° 56.255'W);
 following mean high-water springs to POINT 8 (50° 47.020'N 001° 21.197'W);
 following a straight line to POINT 9 (50° 46.253'N 001° 24.322'W);
 returning to Hurst Point, POINT 1 (50° 42.430'N 001 32.935'W) following mean high water springs.



Solent Dredge Permit Byelaw

The Authority for the Southern Inshore Fisheries and Conservation District, in exercise of the powers conferred by sections 155 and 156 of the Marine and Coastal Access Act 2009 makes the following byelaw for that District.

Interpretation

(1) In this byelaw:

- (a) "bivalve" means any marine mollusc of the class Bivalvia having a shell consisting of two hinged valves, typically connected by a ligament;
- (b) "Bivalve Management Areas" refer to the areas defined in Schedule 1;
- (c) "cultch" means the shell or other material used as a settlement substrate by oysters or other bivalves;
- (d) "District" means the area defined in Articles 2 and 3 of the Southern Inshore Fisheries and Conservation Order 2010 (SI 2010 No 2198);
- (e) "dredge" means a scoop or similar device (including any auxiliary hydraulic equipment) that is designed for, or capable of taking any bivalve;
- (f) "oyster" includes the species *Ostrea edulis*, *Magallana (Crassostrea) gigas* and *Magallana (Crassostrea) angulate*, unless otherwise specified;
- (g) "permit" means:
 - (i) a Category A Permit issued under paragraph (11) of this byelaw; or
 - (ii) a Category B Permit issued under paragraph (12) of this byelaw;
- (h) "Relevant Fishing Vessel" means any vessel which:
 - (i) is registered in Part II of the Register of British Ships in accordance with Part II of the Merchant Shipping Act 1995 and the regulations made under that Act, or in the Channel Islands or Isle of Man;
 - (ii) is licensed to fish by virtue of a licence issued under the Sea Fish (Conservation) Act 1967;
 - (iii) has a "certificate of registry" issued under the Merchant Shipping (Registration of Ships) Regulations 1993;
 - (iv) is under 12 metres in overall length or is otherwise permitted to be used for fishing in accordance with Southern Inshore Fisheries Conservation Authority 'Vessels Used in Fishing Byelaw 2012'; and
 - (v) is permitted to fish within the District in accordance with the Southern Inshore Fisheries Conservation Authority 'Vessels Used in Fishing for Sale' byelaw;

- (i) "Solent" means the area defined in Schedule 2;
- (j) "spat" means larvae of oysters or other bivalve species that have settled by attaching to a surface;
- (k) "The Authority" means the Southern Inshore Fisheries and Conservation Authority (IFCA) as defined in Articles 2 and 4 of the Southern Inshore Fisheries and Conservation Order 2010 (SI 2010 No 2198);
- (l) "use" in relation to a dredge, means pulling or pushing it along, through or above the seabed.

Prohibitions

- (2) A person must not use a dredge by means of a vessel within any Bivalve Management Area.
- (3) Paragraph (2) does not apply when all of the following conditions are met:
 - (a) the vessel is a Relevant Fishing Vessel and is authorised to use a dredge within a Bivalve Management Area in the Solent in accordance with a Category A Permit or a Category B Permit, as issued under paragraph (11) or (12) of this byelaw;
 - (b) paragraphs (4), (17) and (20) of this byelaw are being complied with;
 - (c) all of the conditions attached to the relevant Category A or Category B Permit (paragraphs (11) and (12) respectively) are being complied with.
- (4) A person must not use a dredge by means of a Relevant Fishing Vessel within any Bivalve Management Area on any day before 0600 local time or after 1800 local time.
- (5) A person must not, whilst undertaking fishing operations, remove from any Bivalve Management Area any cultch or other material which could be used for the reception of spat of any bivalve.
- (6) If any cultch or other material which could be used for the reception of spat of any bivalve is lifted while undertaking fishing operations, it must be redeposited immediately on the same fishing ground.

Exceptions

- (7) Paragraphs (2) and (4) do not apply when:
 - (a) Relevant Fishing Vessel transits through a Bivalve Management Area;
- (8) Paragraphs (2) to (6) do not apply when any of the following conditions are met:
 - (a) when the use of a dredge by a Relevant Fishing Vessel on any occasion is authorised by written dispensation issued under paragraph (9) and the authorisation is valid in accordance with paragraph (10);
 - (b) when undertaking fishing operations within a 'several fishery'

Dispensations

- (9) The Authority may issue a written dispensation for the following purposes:
- (a) authorising the use of a dredge for either scientific, educational, stocking or breeding purposes in a Bivalve Management Area;
 - (b) authorising the removal of cultch or other material for the reception of spat if removal is deemed necessary for the destruction of pests, disease, socioeconomic reasons or in accordance with established principles of cultivation.
- (10) The dispensation will only be valid if:
- (a) fishing operations undertaken are in accordance with the purpose for which the dispensation was issued;
 - (b) the dispensation is carried on board and produced for inspection when requested by an Inshore Fisheries and Conservation Officer of the Authority or any other person authorised by the Authority to make such a request.

Issue of Permit

- (11) The Authority may issue a Category A Permit to a person authorising the use of a dredge to fish for or take bivalves (with the exception of oysters of the species *Ostrea edulis*) within a Bivalve Management Area in accordance with paragraph (3) provided that all the conditions under paragraphs (13) to (16) of this byelaw are satisfied in relation to the application for the permit.
- (12) The Authority may issue a Category B Permit to any person authorising the use by a dredge to fish for or take oysters of the species *Ostrea edulis* within a Bivalve Management Area in accordance with paragraph (3) provided that all the conditions under paragraphs (13) to (16) of this byelaw are satisfied in relation to the application for the permit.
- (13) The application for a permit under paragraph (11) or (12) is made:
- (a) in respect of a named Relevant Fishing Vessel;
 - (b) by a person who holds the majority of shares in the named Relevant Fishing Vessel for which the application is made, as recorded on the Relevant Fishing Vessel's Certificate of Registry; or
 - (c) by no more than two nominated representatives, as has been nominated in writing for that purpose by a person or persons holding the majority of shares in the named Relevant Fishing Vessel, as recorded on the named Relevant Fishing Vessel's Certificate of Registry; provided that a person nominated is not:
 - (i) a permit holder, who already holds a permit for the category in respect of which the application is made; or
 - (ii) already nominated as a representative on a permit for the category in respect of which the application is made;
 - (d) using the forms available from the Authority direct or the Authority's website.

- (14) A permit issued under paragraph (11) or (12):
- (a) will be issued to either the majority shareholder or nominated representative(s) ("the permit holder") in accordance with paragraph (13) in respect of a named Relevant Fishing Vessel;
 - (b) is not transferable between the permit holder and another person; or between the named Relevant Fishing Vessel and another vessel;
 - (c) will consist of a paper permit, which must be carried onboard the Relevant Fishing Vessel at all times, and a permit disc which must be clearly displayed onboard the Relevant Fishing Vessel at all times; and
 - (d) is valid for the period stated in the permit.
- (15) Only one Category A Permit and one Category B Permit may be issued per Relevant Fishing Vessel.
- (16) A maximum of two Category A Permits and two Category B Permits may be issued to an individual who is in ownership of more than one Relevant Fishing Vessel.
- (17) The permit holder must be present onboard the named Relevant Fishing Vessel at all times whilst undertaking fishing activities authorised under the permit.
- (18) At the request of the Authority, the permit holder must facilitate the Inshore Fisheries and Conservation Officers of the Authority, or any other person authorised by the Authority, access to the Relevant Fishing Vessel for the purpose of observing activities carried out.
- (19) The permit must be produced for inspection when requested by an Inshore Fisheries Conservation Officer of the Authority or any other person authorised by the Authority to make such a request.
- (20) The permit holder must complete and submit information, in the form of a Catch Return, to the Authority at such frequency, by such deadlines and containing such detail as are specified in a condition in his or her permit.

Cost of Permit

- (21) The Authority may charge a fee of no greater than £5,000 for each permit.
- (22) The Authority will review the suitability of permit fees in accordance with paragraph (28) of this byelaw.
- (23) A fee of £50 is payable for the replacement of lost, amended or damaged permits.

Number of Permits

(24) The Authority may limit the number of permits that it may grant.

(25) The Authority will review the limitations on the number of permits in accordance with paragraph (28) of this byelaw.

Flexible Permit Conditions

(26) The Authority (or a sub-committee thereof authorised by the Authority to do so) may, for the purposes of managing the sustainable harvesting of bivalves in Bivalve Management Areas in the Solent, attach, vary or remove flexible conditions to a permit, falling within some or all of the following categories:

- (a) prohibiting or restricting harvesting of sea fisheries resources;
- (b) limiting the amount of sea fisheries resources harvested by a Relevant Fishing Vessel;
- (c) limiting the amount of time a Relevant Fishing Vessel may spend harvesting;
- (d) prohibiting or restricting any method of harvesting;
- (e) setting the frequency of, deadlines for and content of catch returns.

(27) When introducing, removing or varying a flexible permit condition the Authority must operate in accordance with the review procedure set out in paragraph (28).

Review Procedure

(28) The Authority (or a sub-committee thereof authorised by the Authority to do so) will review the suitability of the flexible permit conditions, permit fees and limitations on the number of permits every three years or sooner in accordance with the Solent Dredge Permit Management Intentions Document, The Solent Dredge Permit Access Policy and the following procedure:

- (a) a consultation will be held with permit holders and any other stakeholders as the Authority shall deem fit, to present any available evidence, as defined in paragraph (29) and discuss options;
- (b) the Authority will decide whether to add, vary or remove any permit conditions based on the consultation responses and information received in accordance with paragraph (29) below having regard to the duties and obligations under sections 153 and 154 of the Marine and Coastal Access Act 2009 and Regulation 9(1) of the Conservation of Habitats and Species Regulations 2017;
- (c) the outcome of the review will be notified by the Authority to permit holders in writing.

(29) The available evidence referred to in paragraph (28) may include any one or more of the following:

- (a) any available scientific and survey data, which may include:
 - (i) the density of the bivalve stock within all or each of the Bivalve Management Areas;
 - (ii) the catch rate of bivalves within all or each of the Bivalve Management Areas;
 - (iii) the proportion of bivalves which are immature or below minimum landing size within all or each of the Bivalve Management Areas;
 - (iv) the proportion of mature bivalves intended to promote recruitment within all or each of the Bivalve Management Areas;
- (b) any feedback received from consultation with permit holders;
- (c) any statutory advice given by Natural England or other such bodies, organisations or persons as the Authority deem fit;
- (d) any Habitats Regulations Assessment relating to any proposed changes;
- (e) any Impact Assessment relating to any proposed changes;
- (f) Authority expenditure arising from the:
 - (i) administration of permits and processing of permit holder data;
 - (ii) undertaking of survey activity, stock assessments and HRAs which directly inform the management of the bivalve fisheries within the Solent;
 - (iii) delivery of patrols to monitor compliance with this byelaw and the associated Category A and Category B Permits.

Explanatory Note

(This note is not part of the Byelaw)

The purpose of this byelaw is to manage the harvesting of bivalves via dredge within Bivalve Management Areas within the Solent. The byelaw will support the development of sustainable bivalve fisheries in these areas.

The byelaw prohibits the use of a dredge within Bivalve Management Areas by means of a vessel, except in accordance with a permit issued by the Authority, or in accordance with a written dispensation for certain lawful activities, or exceptions as listed in this byelaw.

Schedule 1

Bivalve Management Areas

Area 1

"The Western Solent" means that part of the district as lies below mean high water springs and the area enclosed by a straight line drawn:
 from Hurst Point, POINT 1 (50° 42.430'N 001° 32.935'W);
 to Fort Victoria, POINT 2 (50° 41.973'N 001° 32.045'W);
 following mean high water springs to POINT 3 (50° 43.429'N 001° 24.712'W)
 to POINT 4 (50° 43.436'N 001° 24.610'W);
 following mean high water springs to Old Castle Point, POINT 5 (50° 45.973'N 001° 16.658'W)
 to POINT 6: (50° 46.882'N 001° 16.631'W);
 to Stansore Point, POINT 7 (50° 47.114'N 001° 20.673'W);
 following mean high water springs to POINT 8 (50° 47.020'N 001° 21.197'W)
 to POINT 9 (50° 46.253'N 001° 24.322'W);
 returning to Hurst Point, POINT 1 (50° 42.430'N 001 32.935'W) following mean high water springs.

Area 2

"Northern Solent" means that part of the district as lies below mean high water springs and the area enclosed by a series of straight lines drawn:
 from Stansore Point, POINT 7 (50° 47.114'N 001° 20.673'W);
 to Gilkicker point, POINT 10 (50° 46.413'N 001° 8.575'W);
 following mean high water springs to Chilling at POINT 11 (50° 49.192'N 001° 15.075'W);
 to Calshot Radar Tower, POINT 12 (50°49.192'N 001°18.465'W);
 returning to Stansore Point, POINT 7 (50° 47.114'N 001° 20.673'W) following mean high water springs.

Area 3

"Eastern Solent" means that part of the district as lies below mean high water springs and the area enclosed by a series of straight lines drawn:
 from Old Castle Point, POINT 5 (50° 45.973'N 001° 16.658'W);
 to POINT 6 (50° 46.882'N 001° 16.631'W);
 to Gilkicker point, POINT 10 (50° 46.413'N 001° 8.575'W);
 following mean high water springs to POINT 13 (50° 47.380'N 001° 06.708'W);
 to Round Tower, POINT 14 (50° 47.433'N 001° 06.530'W);
 following mean high water springs to the Radar Mast at Eastney, POINT 15 (50° 47.348'N 001° 01.762'W);
 to POINT 16 (50° 47.348'N 001° 01.385'W);
 following mean high water springs to POINT 17 (50° 46.631'N 0° 56.255'W);
 to POINT 18 (50° 40.065'N 0° 56.255'W);
 to Culver Cliff, POINT 19 (50° 40.034'N 1° 5.747'W);
 Returning to Old Castle Point, POINT 5 (50° 45.973'N 001° 16.658'W) following mean high water springs.

Area 4

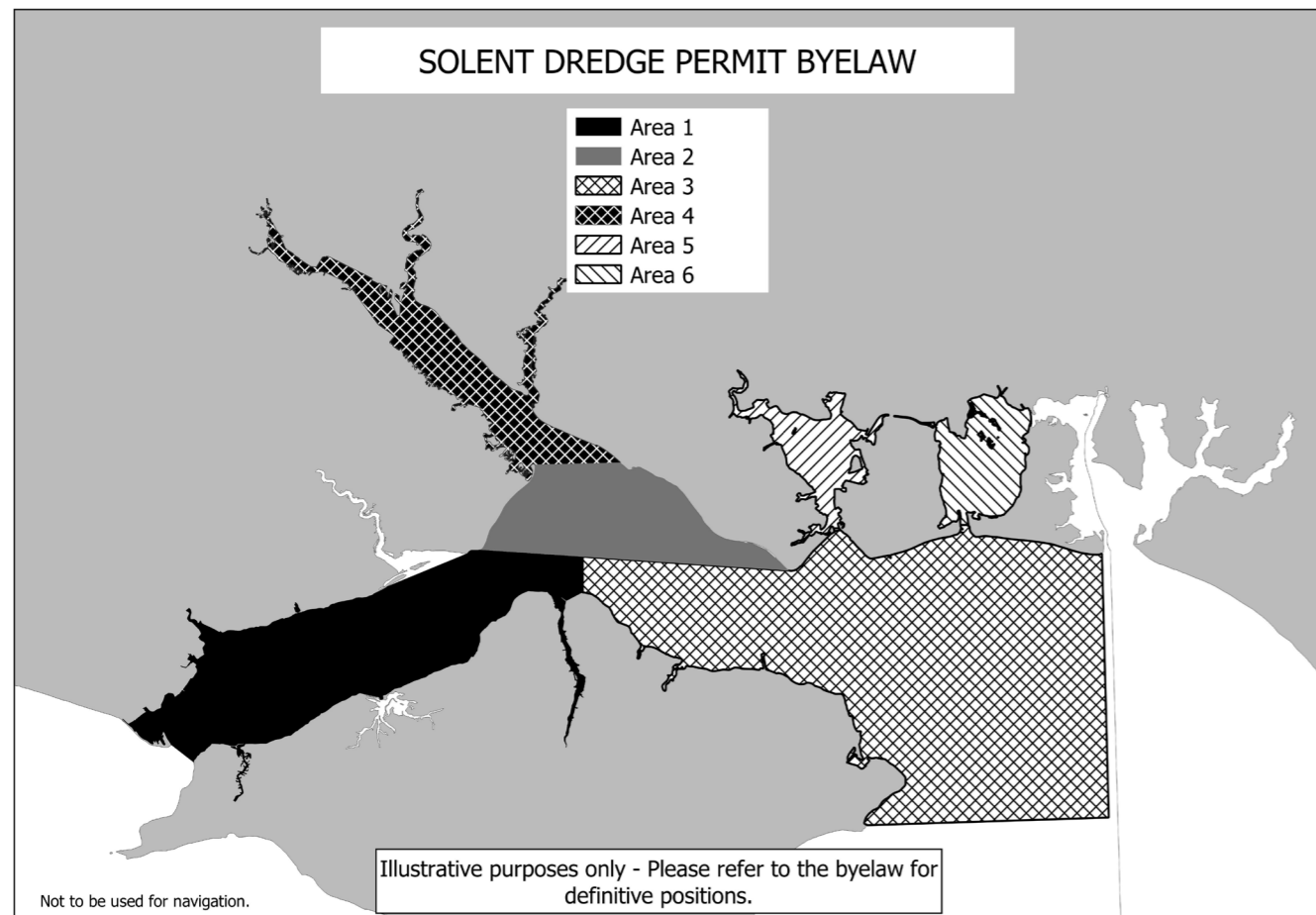
"Southampton Water" means that part of the district as lies below mean high water springs:
 to the North of an imaginary straight line drawn from Calshot Radar Tower, POINT 12 (50°49.192'N 001°18.465'W) to Chilling, POINT 11 (50°49.192'N 001° 15.075'W).

Area 5

"Portsmouth Harbour" means that part of the district as lies below mean high water springs:
 to the North of an imaginary straight line between POINT 13 (50° 47.380'N 001° 06.708'W)
 to Round Tower, POINT 14 (50° 47.433'N 001° 06.530'W).

Area 6

"Langstone Harbour" means that part of the district as lies below mean high water springs:
 to the North of an imaginary straight line between the Radar Mast at Eastney, POINT 15 (50° 47.348'N 001° 01.762'W), POINT 16 (50° 47.348'N 001° 01.385'W).



Schedule 2

The Solent

"Solent" means that part of the district as lies below mean high water springs and the area enclosed by the following coordinates:

from Hurst Point, POINT 1 (50° 42.430'N 001° 32.935'W);
 to Fort Victoria, POINT 2 (50° 41.973'N 001° 32.045'W);
 following mean high water springs to POINT 3 (50° 43.429'N 001° 24.712'W);
 following a straight line to POINT 4 (50° 43.436'N 001° 24.610'W),
 following mean high water springs to Culver Cliff, POINT 5 (50° 40.034'N 1° 5.747'W);
 following a straight line due east to POINT 6 (50° 40.065'N 0° 56.255'W);
 following a straight line due north to POINT 7 (50° 46.631'N 0° 56.255'W);
 following mean high-water springs to POINT 8 (50° 47.020'N 001° 21.197'W)
 following a straight line to POINT 9 (50° 46.253'N 001° 24.322'W),
 returning to Hurst Point, POINT 1 (50° 42.430'N 001 32.935'W) following mean high water springs.

Temporary Closure of Shellfish Beds

Where in the opinion of the Committee, in any fishery, any bed or part of a bed of shellfish is so severely depleted as to require temporary closure in order to ensure recovery, or any bed or part of a bed contains mainly immature or undersized shellfish which in the interests of the protection and development of the fishery ought not to be fished for the time being, or any bed of transplanted shellfish ought not to be fished until it has become established, and where the bed or part thereof has been clearly defined in notices displayed in the vicinity prohibiting the removal of the shellfish, or where the display of notices is not practicable notice has been given by publishing a notice in a weekly newspaper circulating in the District in which that shellfish bed or part of bed is situated. No person shall, while the bed or part thereof is so defined, take away any shellfish without consent of the Committee. For the purpose of this Byelaw the term "shellfish" means mussels, oysters and clams.

Vessels Used in Fishing Byelaw 2012

The Authority for the Southern Inshore Fisheries and Conservation District, in exercise of the powers conferred upon it under sections 155 and 156 of the Marine and Coastal Access Act 2009 (c. 23) makes the following byelaw for District.

Definitions

(1) In this byelaw:

- (a) "The Authority" means the Southern Inshore Fisheries and Conservation Authority as defined in articles 2 and 3 of the Southern Inshore Fisheries and Conservation Order 2010 (SI 2010/2198);
- (b) "the 1983 baselines" means the 1983 baselines as defined in the Southern Inshore Fisheries and Conservation Order 2010 (SI 2010/2198);
- (c) "the District" means the Southern Inshore Fisheries and Conservation District as defined in articles 2 and 4 of the Southern Inshore Fisheries and Conservation Order 2010 (SI 2010/2198);
- (d) "the extended area" means so much of the sea as lies within the following boundaries:
 - (i) A line drawn along the western side of the road-bridge leading from Langstone to Hayling Island in the County of Hampshire and continued to the southern extremity of the said bridge straight to the Hayling Island Coastguard station (50° 46.90'N 0° 58.18'W) and thence seawards in a true southerly direction; and
 - (ii) The eastern boundary of the District as defined in regulation 3(5)(b) and Part 2 of the Table in the Schedule to the Southern Inshore Fisheries and Conservation Order 2010 (SI 2010/2198);
- (e) "overall length" has the same meaning as in the Merchant Shipping (Registration of Ships) Regulations 1993 (SI 1993/3138);

- (f) "pleasure vessel" has the same meaning as in the definition in regulation 2(1) of the Merchant Shipping (Vessels in Commercial Use for Sport or Pleasure) Regulations 1998 (SI 1998/2771), but excluding the vessels referred to in subparagraph (b) of that definition.
- (g) "the Southern Committee" means the Committee of the Southern Sea Fisheries District as established from time to time by Order under the Sea Fisheries Regulation Act 1966;

(2) Ownership of a vessel is to be determined by reference to the Register of British Ships established under the Merchant Shipping (Register of Ships etc) Act 1993 and, for the purposes of this Byelaw, the ownership of a vessel changes when a new owner is added to the vessel's details in the Register, whether in substitution for or in addition to the existing owner or owners.

Restriction on the use of vessels of specified descriptions

- 1) No person shall use any vessel which exceeds 12 metres in overall length for fishing for or taking sea fish.
- (2) This restriction is subject to the exceptions in paragraph 3.

Exceptions

- (1) This Byelaw shall not apply in so much of the sea as lies inside a line drawn three nautical miles to seaward from the 1983 baselines to any vessel over 12 metres in overall length registered with the Southern Committee on 1st January 1995 to fish for the purpose of sale.
- (2) This Byelaw shall not apply in so much of the sea as lies between a line drawn three nautical miles to seaward from the 1983 baselines and a line drawn six nautical miles to seaward from the 1983 baselines to any vessel over 12 metres in overall length which was registered with the Southern Committee on 27th July 1995 to fish for the purpose of sale, unless:
- In the case of a vessel based at a port within the District boundaries, it has ceased to be so based since 27th July 1995;
 - In the case of a vessel not based at a port within the District boundaries, its ownership has changed since 27th July 1995.
- (3) This Byelaw shall not apply in the extended area to any vessel which is over 12 metres in overall length and not more than 14 metres in overall length, provided that:
- The owner of the vessel has satisfied the Authority within 60 days of this byelaw coming into force, that the vessel was used for fishing in the extended area between 1st October 2010 and 20th December 2012;
 - The Authority has confirmed in writing to the owner of the vessel that it is so satisfied; and
 - The vessel's ownership has not changed since 1st October 2010.
- (4) This Byelaw shall not apply in that part of the extended area which lies between a line drawn three nautical mile to seaward from the 1983 baselines and a line drawn six nautical miles to seaward from the 1983 baselines to any vessel which is over 14 metres in overall length, provided that:

- The owner of the vessel has satisfied the Authority within 60 days of this byelaw coming into force, that the vessel was used for fishing in the extended area between 1st October 2010 and 20th December 2012;
- The Authority has confirmed in writing to the owner of the vessel that it is so satisfied; and
- The vessel's ownership has not changed since 1st October 2010.

(5) This Byelaw shall not apply to any vessel being used wholly for the purpose of conveying persons engaged in fishing for pleasure using rod and line or in diving for pleasure, unless:

- the vessel is registered in Part II of the Register of British ships and is licensed to fish; or
- there are more than 12 passengers on board the vessel.

(6) This Byelaw shall not apply to any pleasure vessel.

Vessels Used in Fishing for Sale

No person shall use or permit the use of any vessel for fishing for or taking sea fish for the purpose of sale other than an open or undecked boat navigated by oars only unless he has, within the previous 24 months, registered or re-registered (as the case may be) this vessel with the Committee and has obtained a certificate to that effect signed by the Chief Fishery Officer of the Committee, which certificate shall be issued without payment upon application on the prescribed form and upon production of the Certificate of Registry of the said vessel as a British Sea Fishing Boat under Part II of the Merchant Shipping Act 1988.

This byelaw does not prejudicially affect any right of Several Fishery under the Sea Fisheries (Shellfish) Act 1967.



Contact details

Tel/Fax: 01202 721373

Email: enquiries@southern-ifca.gov.uk

Web: southern-ifca.gov.uk

