



## **Net Fishing Around Piers**

### **Code of Practice**

In order to appropriately balance the different needs of persons engaged in the exploitation of sea fisheries resources in the district and promote the benefits of recreational fishing from piers, **the use of fishing nets, except landing nets and drop nets, should be excluded from within 200m** of the following piers in the Southern IFC District:

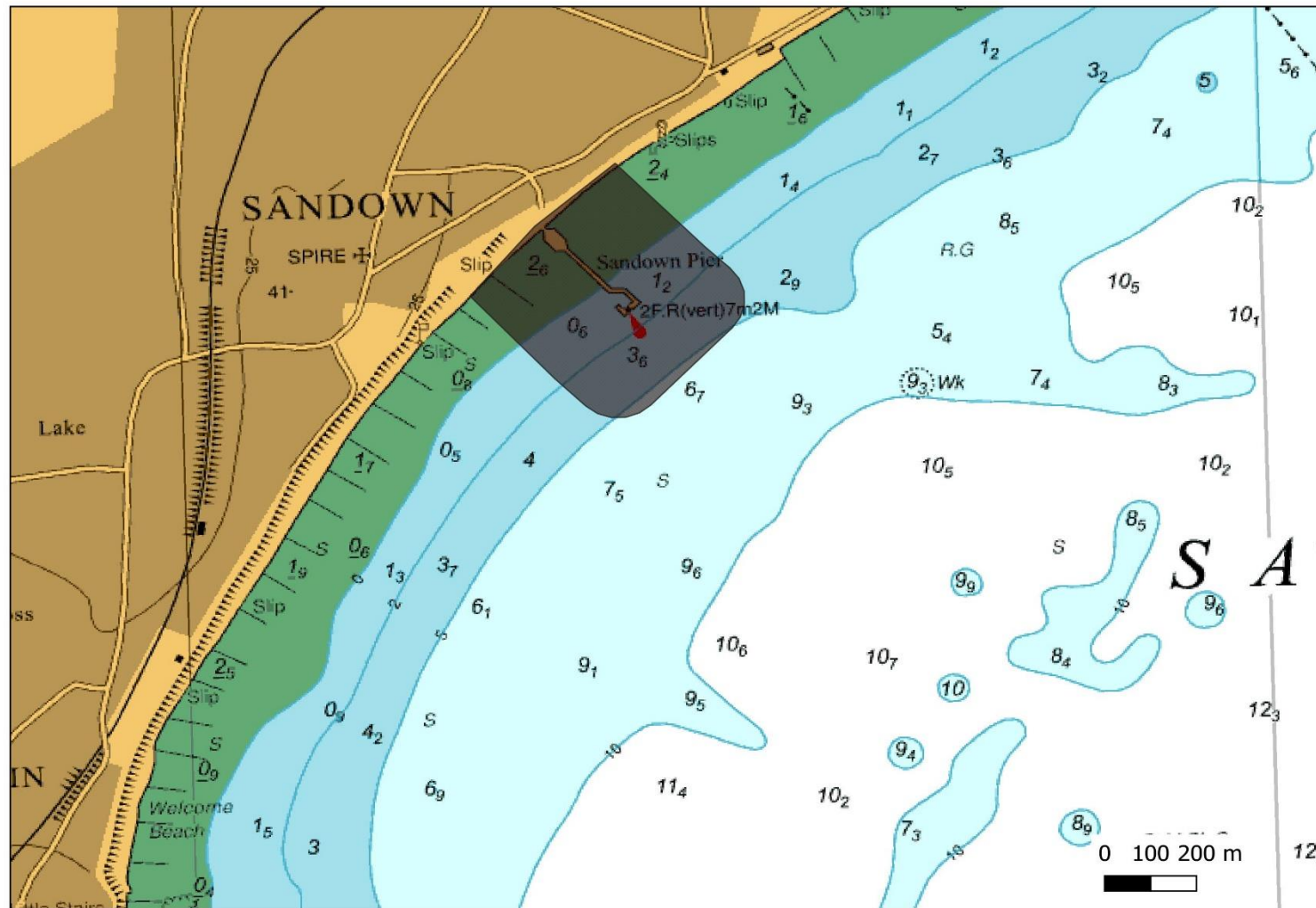
- **Sandown Pier**, Sandown, Isle of Wight;
- **Ryde Pier Head**, Ryde, Isle of Wight;
- **South Parade Pier**, Portsmouth, Hampshire;
- **Yarmouth Pier**, Yarmouth, Isle of Wight;
- **Boscombe Pier**, Bournemouth, Dorset;
- **Bournemouth Pier**, Bournemouth, Dorset;
- **Swanage Pier**, Swanage, Dorset;
- **Weymouth Stone Pier**, Weymouth, Dorset; and
- **Weymouth Pleasure Pier**, Weymouth, Dorset.

#### EXPLANATORY NOTE


*This Code of Practice (CoP) prevents the use of fishing nets, except landing and drop nets, from within 200m of nine piers in the Southern IFC District. These measures aim to balance the different needs of persons engaged in the exploitation of sea fisheries resources in the Southern IFC District. Recreational sea angling is popular activity in the Southern IFC District and the pier locations in this CoP provide important access for participants. Concerns have been raised over the potential for fishing nets, when used near these pier structures, to negatively impact recreational sea angling activity. Landing nets and drop nets are used in these locations by recreational sea anglers as part of their activity. This Code of Practice was developed as a first alternative to a byelaw because sector representatives from the Recreational Angling Sector Group (RASG) and the South Coast Fisherman's Council (SCFC) have identified the potential to address the matter through small changes in fishing practice. This CoP will be reviewed no later than 31<sup>st</sup> December 2022. Should the CoP prove ineffective, Southern IFCA will consider the introduction of regulatory measures.*

## ANNEX I – NET FISHING EXCLUSION ZONE MAPS

### SANDOWN PIER



Inshore Fisheries and  
Conservation Authority

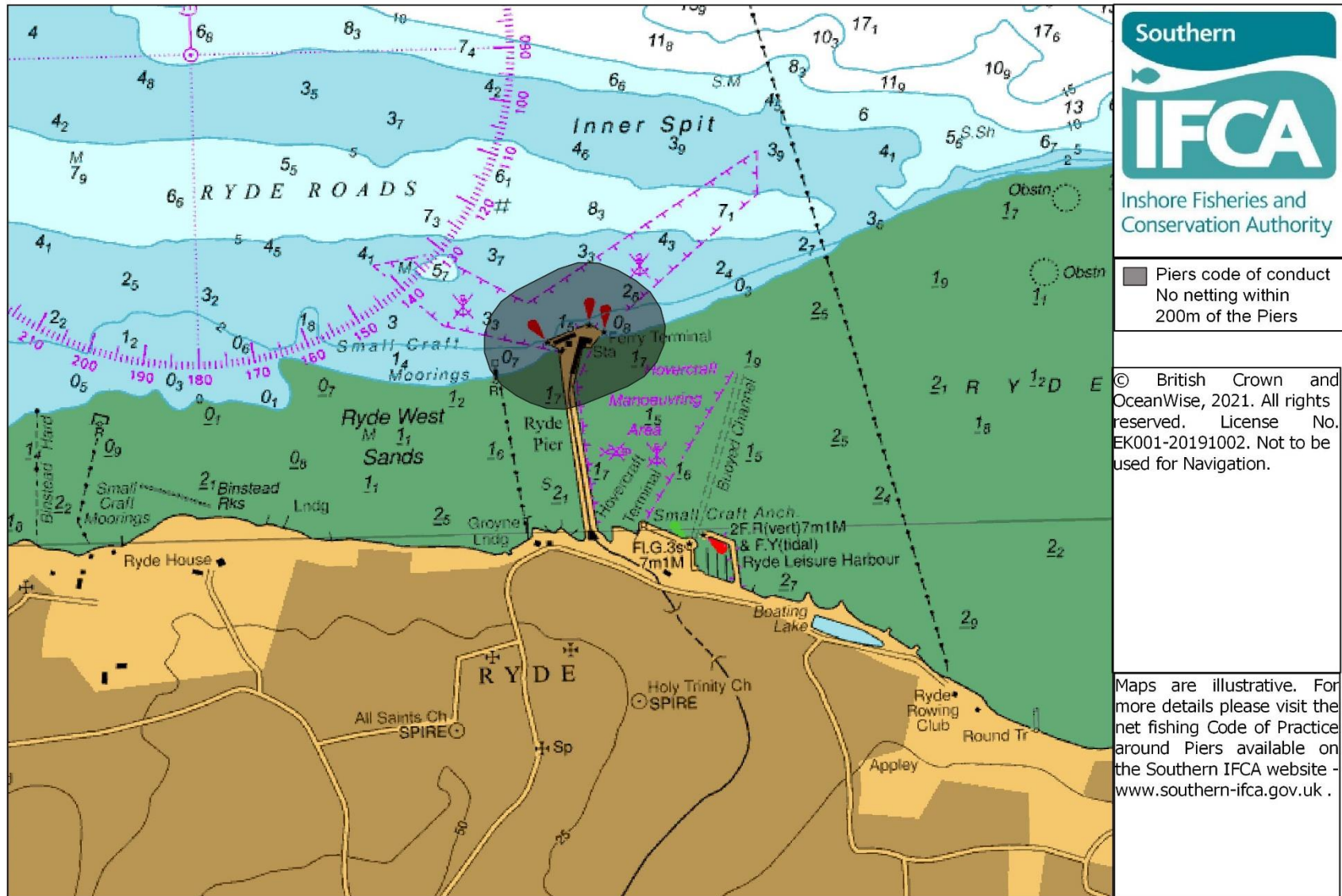
 Piers Code of  
Conduct - No  
Netting within  
200m of the  
Piers

Maps are illustrative and  
not to be used for  
Navigation.

© British Crown and  
OceanWise, 2020. All  
rights reserved. License  
No. EK001-20191002.  
Not to be used for  
Navigation.

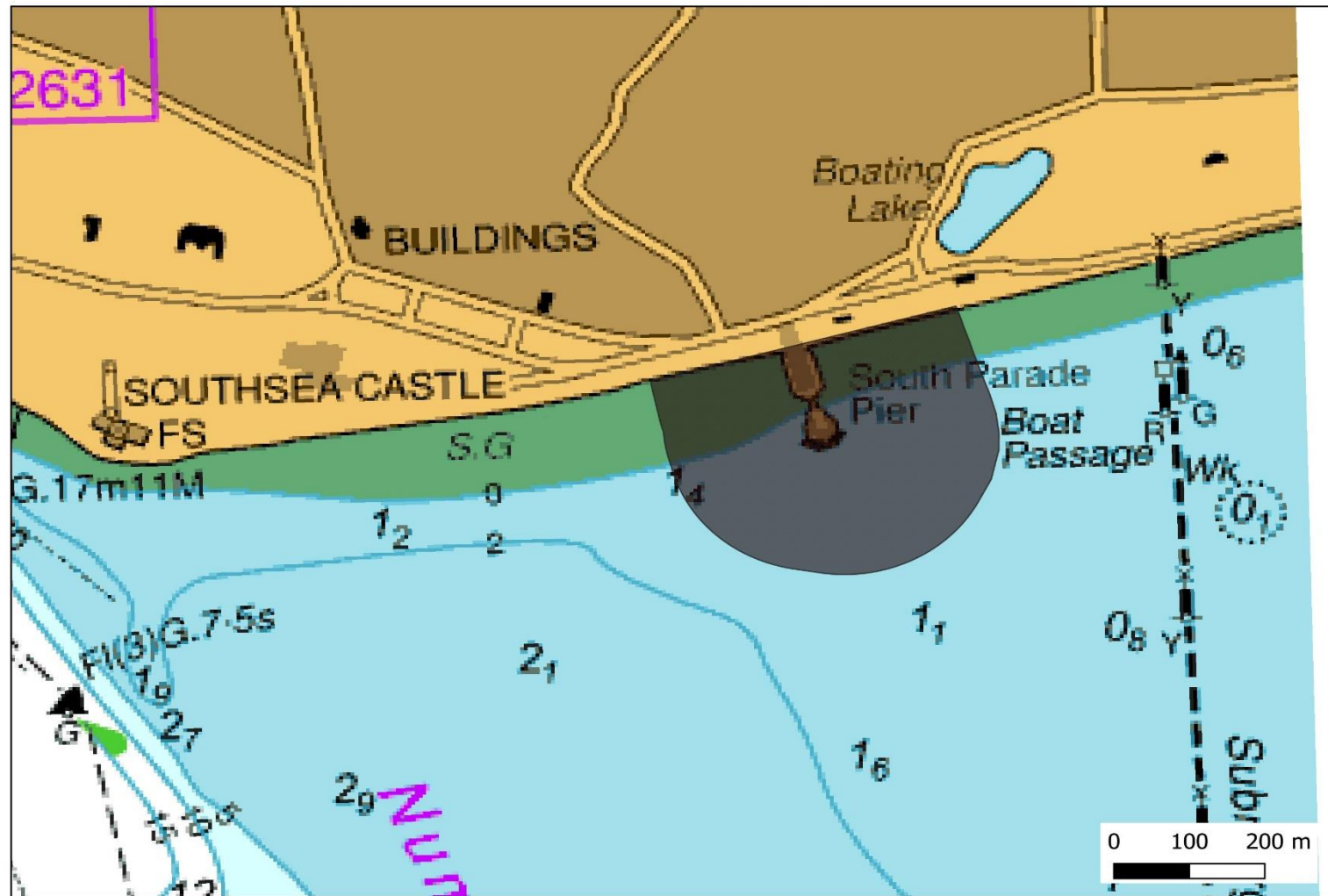
For more details please  
refer to the Net Fishing  
Code of Practice around  
Piers available at  
[www.Southern-  
IFCA.gov.uk](http://www.Southern-IFCA.gov.uk).

## RYDE PIER HEAD





## SOUTH PARADE PIER



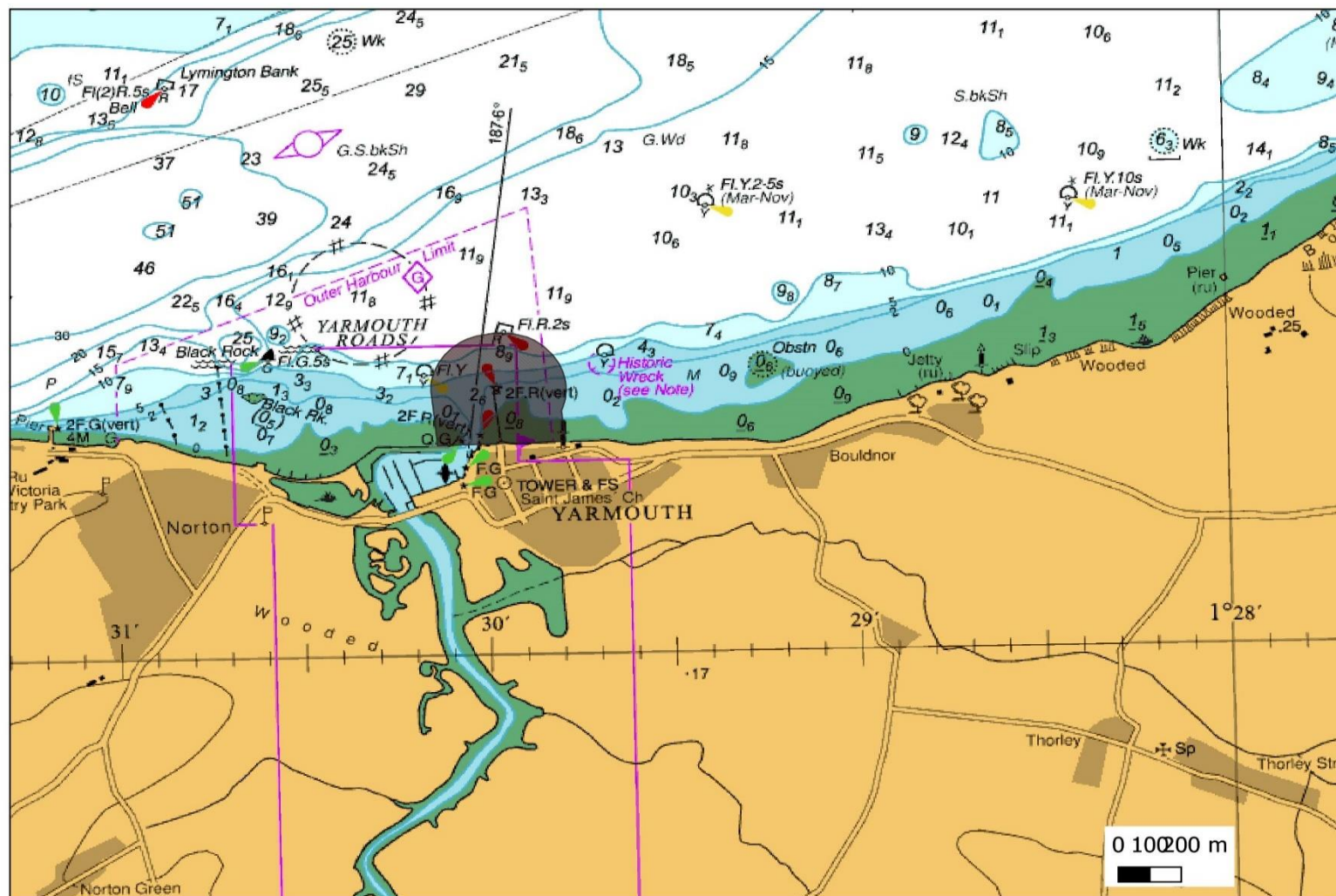
Southern  
**IFCA**  
Inshore Fisheries and  
Conservation Authority

Piers Code of  
Conduct - No  
Netting within  
200m of the  
Piers

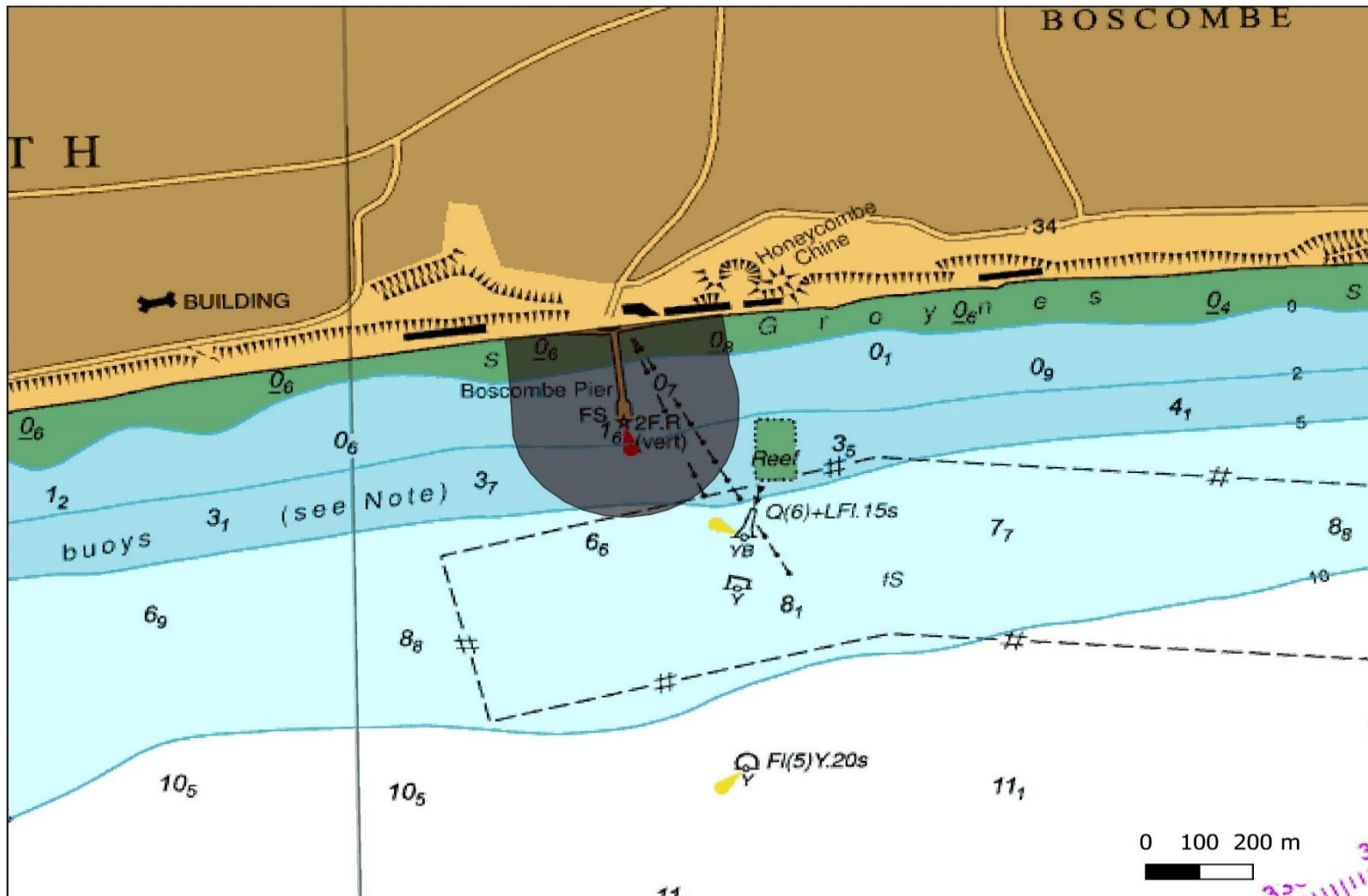
Maps are illustrative and  
not to be used for  
Navigation.  
© British Crown and  
OceanWise, 2020. All  
rights reserved. License  
No. EK001-20191002.  
Not to be used for  
Navigation.

For more details please  
refer to the Net Fishing  
Code of Practice around  
Piers available at  
[www.Southern-  
IFCA.gov.uk](http://www.Southern-IFCA.gov.uk).

## YARMOUTH PIER



## BOSCOMBE PIER



Inshore Fisheries and  
Conservation Authority

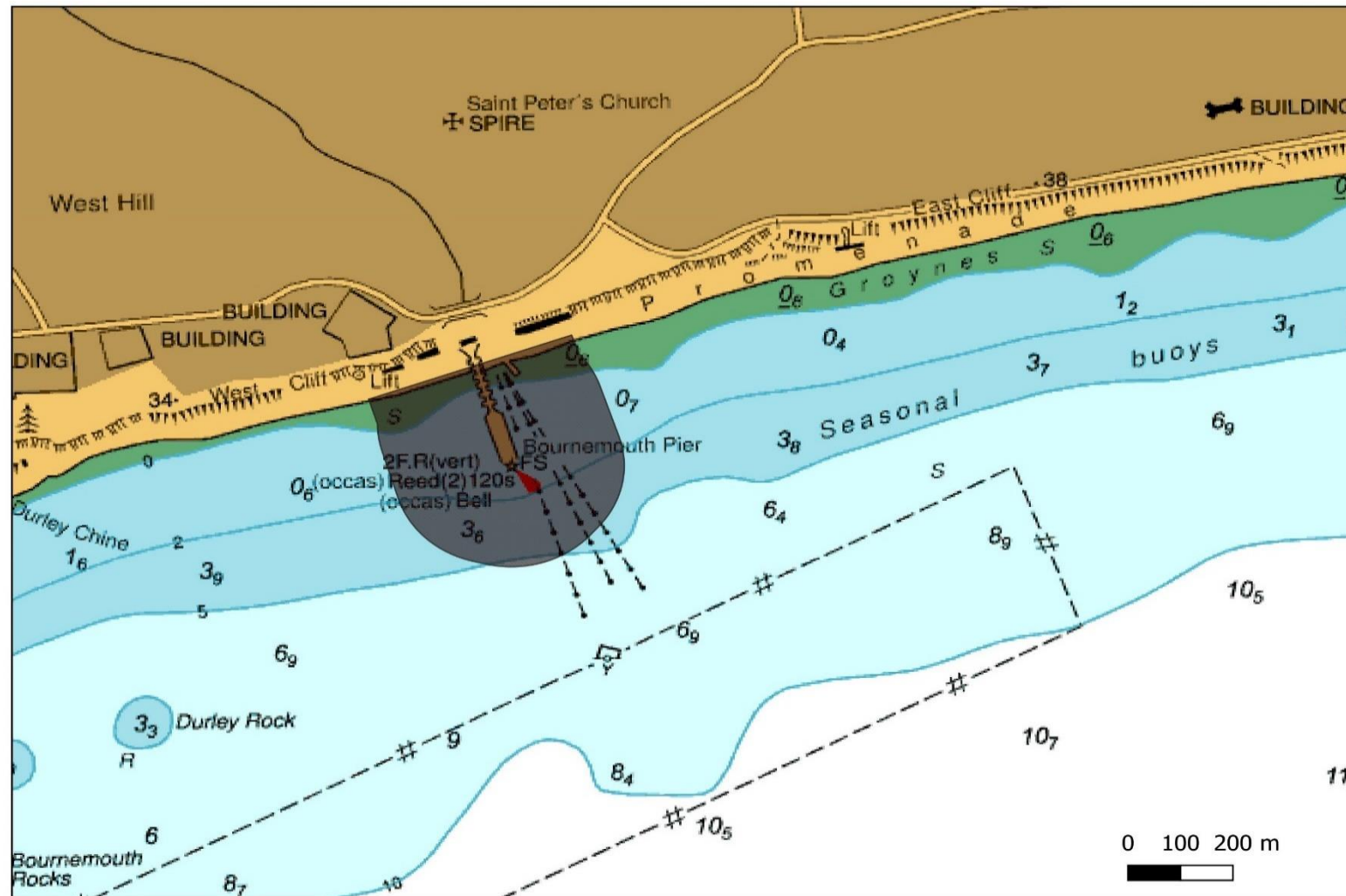
**Piers Code of  
Conduct - No  
Netting within  
200m of the  
Piers**

Maps are illustrative and  
not to be used for  
Navigation.  
© British Crown and  
OceanWise, 2020. All  
rights reserved. License  
No. EK001-20191002.  
Not to be used for  
Navigation.


For more details please  
refer to the Net Fishing  
Code of Practice around  
Piers available at  
[www.Southern-  
IFCA.gov.uk](http://www.Southern-IFCA.gov.uk).



## BOURNEMOUTH PIER



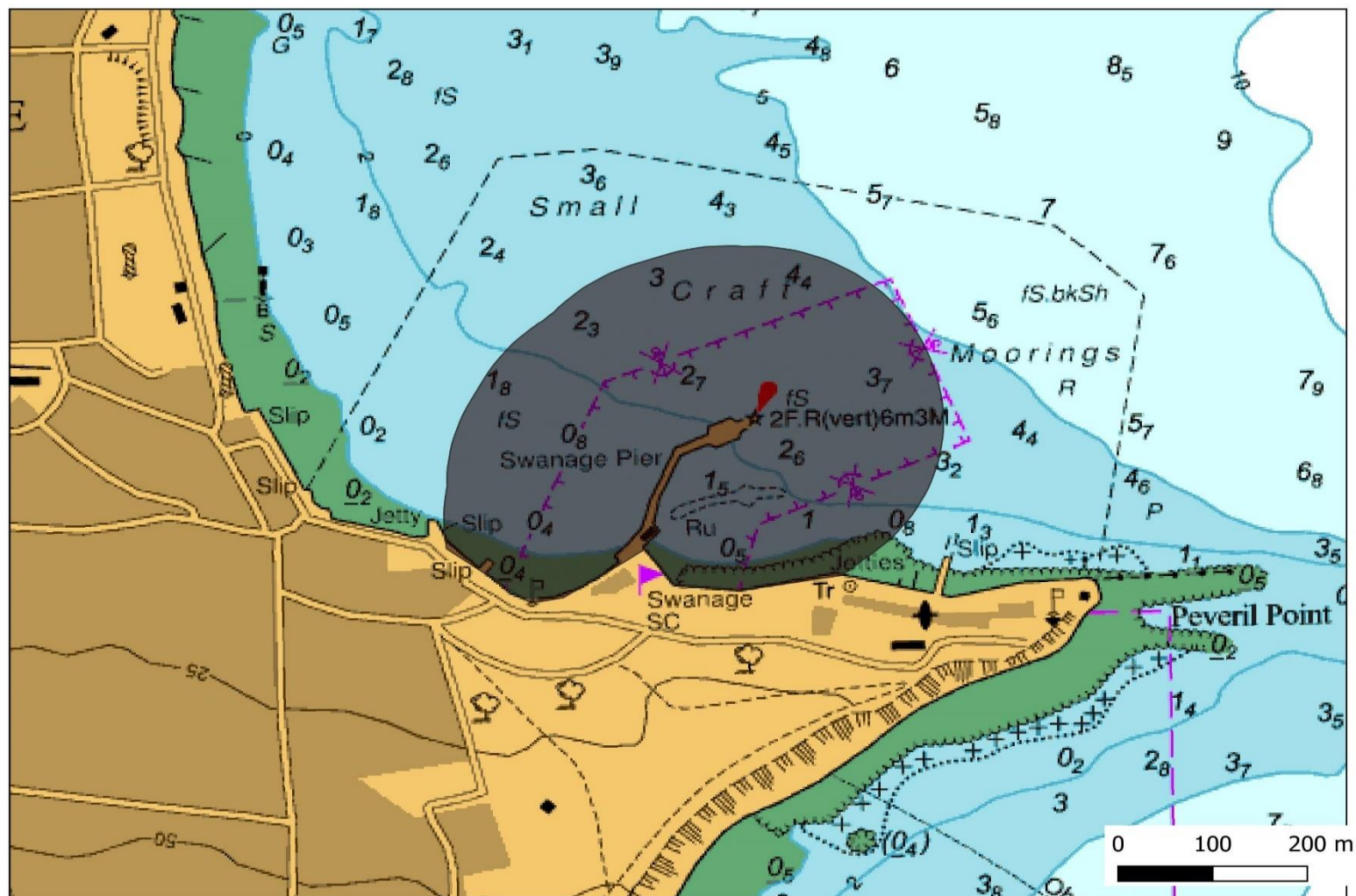
Inshore Fisheries and  
Conservation Authority

 Piers Code of  
Conduct - No  
Netting within  
200m of the  
Piers

Maps are illustrative and  
not to be used for  
Navigation.  
© British Crown and  
OceanWise, 2020. All  
rights reserved. License  
No. EK001-20191002.  
Not to be used for  
Navigation.

For more details please  
refer to the Net Fishing  
Code of Practice around  
Piers available at  
[www.Southern-  
IFCA.gov.uk](http://www.Southern-IFCA.gov.uk).

## SWANAGE PIER



Southern  
**IFCA**  
Inshore Fisheries and  
Conservation Authority

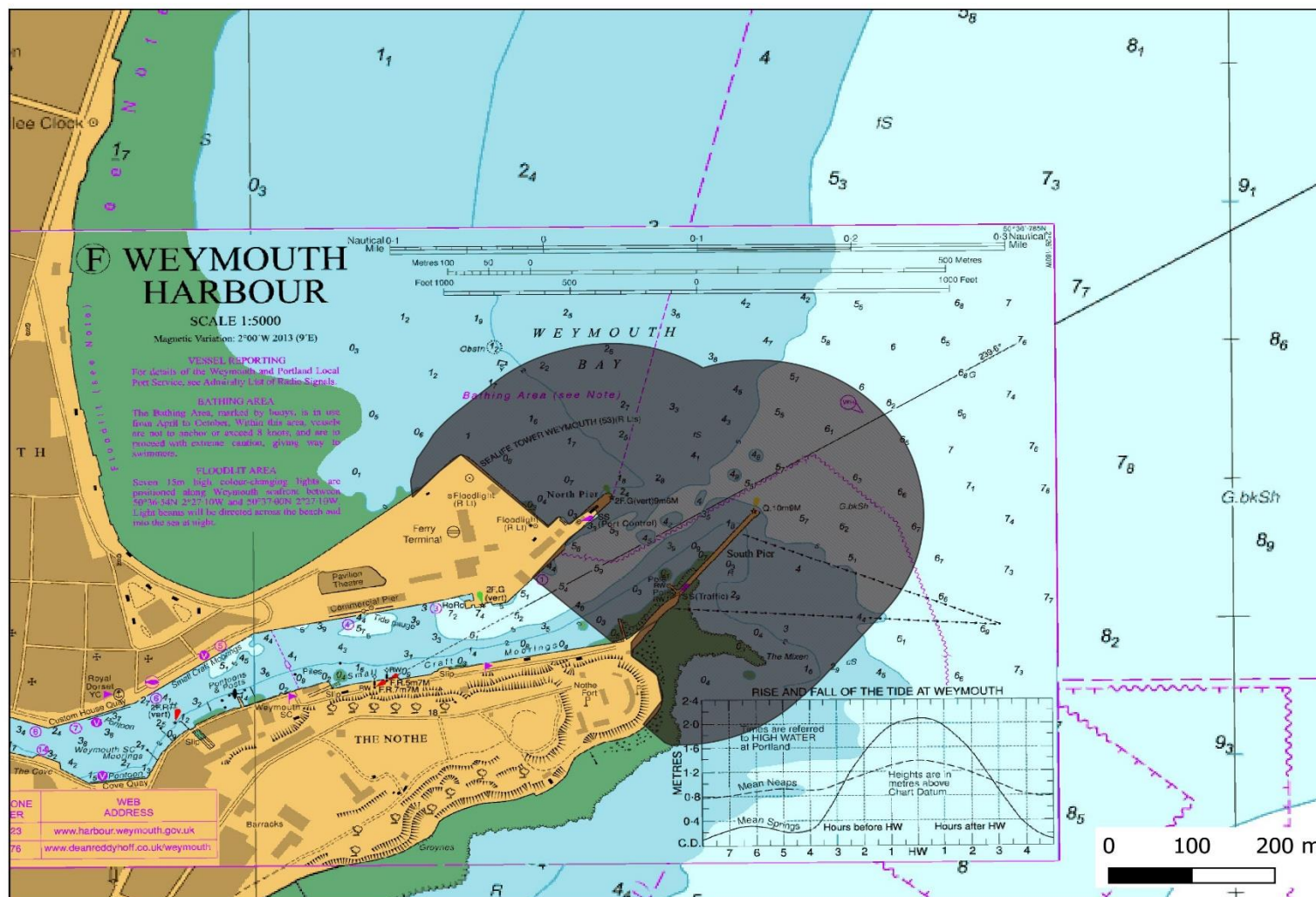
**Piers Code of  
Conduct - No  
Netting within  
200m of the  
Piers**

Maps are illustrative and  
not to be used for  
Navigation.  
© British Crown and  
OceanWise, 2020. All  
rights reserved. License  
No. EK001-20191002.  
Not to be used for  
Navigation.

For more details please  
refer to the Net Fishing  
Code of Practice around  
Piers available at  
[www.Southern-  
IFCA.gov.uk](http://www.Southern-IFCA.gov.uk).



# WEYMOUTH PIERS



**Piers Code of Conduct - No Netting within 200m of the Piers**

Maps are illustrative and not to be used for Navigation.  
© British Crown and OceanWise, 2020. All rights reserved. License No. EK001-20191002. Not to be used for Navigation.

For more details please refer to the Net Fishing Code of Practice around Piers available at [www.Southern-IFCA.gov.uk](http://www.Southern-IFCA.gov.uk).