

SOUTHERN INSHORE FISHERIES AND CONSERVATION AUTHORITY

SOUTHERN INSHORE FISHERIES AND CONSERVATION AUTHORITY

MARINE AND COASTAL ACCESS ACT 2009 (c23)

MINIMUM CONSERVATION REFERENCE SIZE BYELAW

The Authority for the Southern Inshore Fisheries and Conservation District, in exercise of the powers conferred by sections 155 and 156 of the Marine and Coastal Access Act 2009 hereby make the following byelaw for that District.

INTERPRETATION

(1) In this byelaw:

- a) “the Authority” means Southern Inshore Fisheries and Conservation Authority as defined in Articles 2 and 4 of the Southern Inshore Fisheries and Conservation Order 2010 (SI 2010 No 2198);
- b) “the District” means the area defined in Articles 2 and 3 of the Southern Inshore Fisheries and Conservation Order 2010;
- c) “Area 1” means the area of the District to the east of an imaginary line due south from 50° 35.462’N 002° 00.000’W;
- d) “Area 2” means the area of the District to the west of an imaginary line due south from 50° 35.462’N 002° 00.000’W;
- e) “minimum conservation reference size” for:
 - i. fish species shall be measured from the tip of the snout to the end of the tail fin;
 - ii. bivalve mollusc species or a whelk (*Buccinum spp.*) shall be measured across the longest part of the shell;
 - iii. a whole skate or ray shall be measured between the tips of the wings;
 - iv. a skate or ray wing shall be measured as the maximum dimension of a wing when it is detached from the body of a skate or ray;
 - v. a lobster (*Homarus gammarus*) shall be measured as the length of the carapace, parallel to the midline, from the back of either eye socket to the distal edge of the carapace;
 - vi. a crawfish (*Palinurus spp.*) shall be measured as the length of the carapace from the tip of the rostrum to the midpoint of the distal edge of the carapace;

SOUTHERN INSHORE FISHERIES AND CONSERVATION AUTHORITY

- vii. a spinous spider crab (*Maja squinado*) shall be measured as the length of the carapace, along the midline, from the edge of the carapace between the rostrums to the posterior edge of the carapace;
- viii. an edible crab (*Cancer pagurus*) or a velvet crab (*Necora puber*) shall be measured as the maximum width of the carapace measured perpendicular to the antero-posterior midline of the carapace.

PROHIBITION

- (2) A person must not take, retain on board, tranship, land, transport, store, sell, display or offer for sale from a fishery within the District, any fish or shellfish species specified in the schedule which measure less than the minimum conservation reference size specified in the schedule. Any such fish or shellfish must be returned to the sea immediately.

EXEMPTION

- (3) Paragraph (2) does not apply where the landing obligation under Article 15 of Regulation (EU) 1380/2013, or any subsequent regulation that requires marine organisms to be landed, applies.

DISPENSATIONS

- (4) Paragraph (2) does not apply to any person performing an act which would otherwise constitute an offence against this byelaw, if that act was carried out in accordance with a written permission issued by the Authority, permitting that act for scientific, stocking, educational or breeding purposes.

REVOCATIONS

- (5) The byelaw with the title 'Minimum Fish Sizes' made by Southern Sea Fisheries District Committee on 12th July 2001, in exercise of its power under section 5 of the Sea Fisheries Regulation Act 1966, as confirmed by the Secretary of State for Environment, Food and Rural Affairs on 6th December 2001, and in force immediately before the making of this byelaw is hereby revoked.
- (6) The byelaw with the title 'Skates and Rays - Minimum Size' made by Southern Sea Fisheries District Committee on 20th October 1994, in exercise of its power under section 5 of the Sea Fisheries Regulation Act 1966, as confirmed by the Secretary of State for Environment, Food and Rural Affairs on 27th February 1995 and in force immediately before the making of this byelaw is hereby revoked.
- (7) The byelaw with the title 'American Hard Shelled Clams - Minimum Size' made by Southern Sea Fisheries District Committee on 24th April 1990, in exercise of its power under section 5 of the Sea Fisheries Regulation Act 1966, as confirmed by the Secretary of State for Environment, Food and Rural Affairs on 6th September 1991 and in force immediately before the making of this byelaw is hereby revoked.

SOUTHERN INSHORE FISHERIES AND CONSERVATION AUTHORITY

(8) The byelaw with the title 'Grey Mullet - Minimum Size' made by Southern Sea Fisheries District Committee on 20th October 1994, in exercise of its power under section 5 of the Sea Fisheries Regulation Act 1966, as confirmed by the Secretary of State for Environment, Food and Rural Affairs on 27th February 1995 and in force immediately before the making of this byelaw is hereby revoked.

I hereby certify that the above byelaw was made by Southern Inshore Fisheries and Conservation Authority at their meeting on 11th June 2020.

.....

Robert Clark

Chief Officer

Southern Inshore Fisheries and Conservation Authority

The Secretary of State for the Environment, Food and Rural Affairs in exercise of the power conferred by Section 155(3) of the Marine and Coastal Access Act 2009 confirms the Minimum Conservation Reference Size Byelaw made by Southern Inshore Fisheries and Conservation Authority on the 11th June 2020.

.....

A Senior Civil Servant for, and on behalf of, the Secretary of State for Environment, Food and Rural Affairs.

Date:

SOUTHERN INSHORE FISHERIES AND CONSERVATION AUTHORITY

SCHEDULE

SPECIFIED SPECIES MINIMUM CONSERVATION REFERENCE SIZES

Ballan wrasse (<i>Labrus bergylta</i>)	180 mm
Black seabream (<i>Spondyllosoma cantharus</i>)	230 mm
Brill (<i>Scophthalmus rhombus</i>)	300 mm
Clam – American hard-shelled (<i>Mercinaria mercinaria</i>)	63 mm
Clam - Grooved carpetshell (<i>Ruditapes decussatus</i>)	40 mm
Clam - Manila (<i>Ruditapes philippinarum</i>)	35 mm
Clam - Surf (<i>Spisula solida</i>)	25 mm
Clam – Warty Venus (<i>Venus verrucosa</i>)	40 mm
Cod (<i>Gadus morhua</i>)	350 mm
Conger eel (<i>Conger conger</i>)	580 mm
Corkwing wrasse (<i>Symphodus melops</i>)	140 mm
Crawfish (<i>Palinurus spp.</i>)	110 mm
Dab (<i>Limanda limanda</i>)	230 mm
Edible crab (<i>Cancer pagurus</i>)	140 mm
European bass (<i>Dicentrarchus labrax</i>)	420 mm
Flounder (<i>Platichthys flesus</i>)	270 mm
Grey thick-lipped mullet (<i>Chelon labrosus</i>)	420 mm
Grey thin-lipped mullet (<i>Chelon ramada</i>)	420 mm
Golden grey mullet (<i>Chelon aurata</i>)	360 mm
Goldsinny wrasse (<i>Ctenolabrus rupestris</i>)	120 mm
Horse mackerel (<i>Trachurus spp.</i>)	150 mm
Lemon sole (<i>Microstomus kitt</i>)	250 mm
Lobster (<i>Homarus gammarus</i>)	87 mm
Mackerel (<i>Scomber spp.</i>)	200 mm
Plaice (<i>Pleuronectes platessa</i>)	270 mm
Pollack (<i>Pollachius pollachius</i>)	300 mm
Queen scallop (<i>Chlamys spp.</i>)	40 mm
Razor clam (<i>Ensis spp.</i>)	100 mm
Red mullet (<i>Mullus surmuletus</i>)	150 mm
Rock cook wrasse (<i>Centrolabrus exoletus</i>)	120 mm
Scallop (<i>Pecten maximus</i>) in Area 1	110 mm
Scallop (<i>Pecten maximus</i>) in Area 2	100 mm
Skate or ray – whole	400 mm
Skate or ray – wing	200 mm
Sole (<i>Solea spp.</i>)	240 mm
Spinous spider crab (<i>Maja squinado</i>) - Female	120 mm
Spinous spider crab (<i>Maja squinado</i>) - Male	130 mm
Turbot (<i>Scophthalmus maxima</i>)	300 mm
Velvet crab (<i>Necora puber</i>)	65 mm
Whelk (<i>Buccinum spp.</i>)	45 mm
Whiting (<i>Merlangius merlangus</i>)	270 mm
Witch flounder (<i>Glyptocephalus cynoglossus</i>)	280 mm

SOUTHERN INSHORE FISHERIES AND CONSERVATION AUTHORITY

Explanatory Note (not part of the byelaw)

The purpose of this byelaw is to manage the sustainable exploitation of sea fisheries resources in the Southern IFC District. The byelaw prevents the removal of fish and shellfish species below a certain size by all fishers in the Southern IFC District except if it is in accordance with a written dispensation for certain lawful activities as listed in the byelaw.

Measurement of species

Figure 1. Fish species

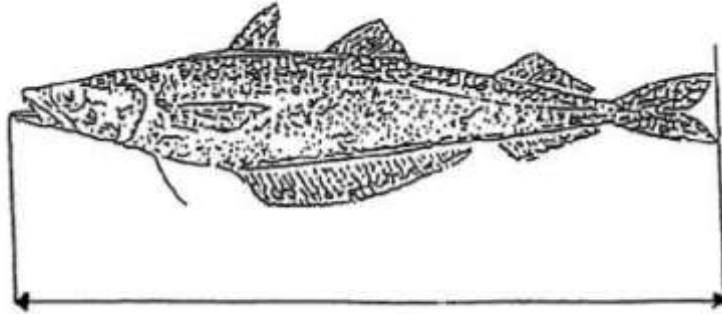


Figure 2. Bivalve mollusc species



Figure 3. A whelk (*Buccinum spp.*)

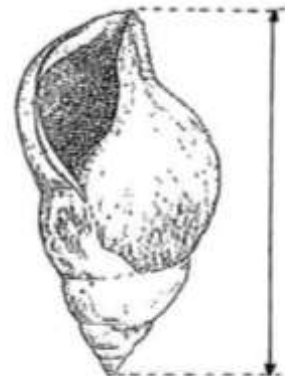
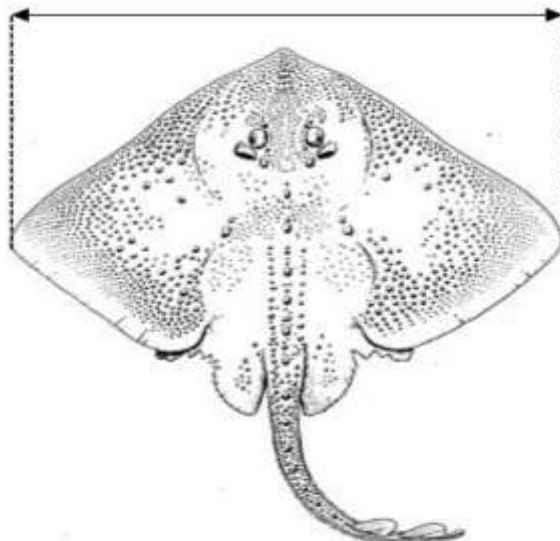


Figure 4. A whole skate or ray



SOUTHERN INSHORE FISHERIES AND CONSERVATION AUTHORITY

Figure 5. A lobster (*Homarus gammarus*)

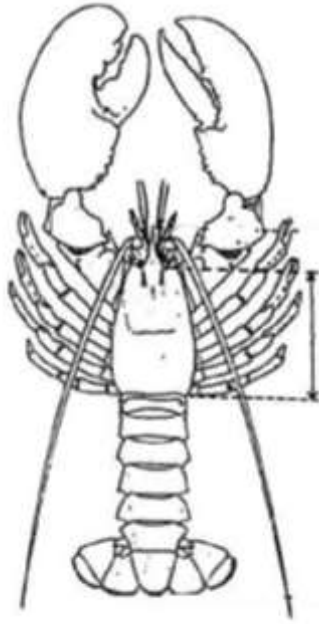


Figure 6. A crawfish (*Palinurus spp.*)

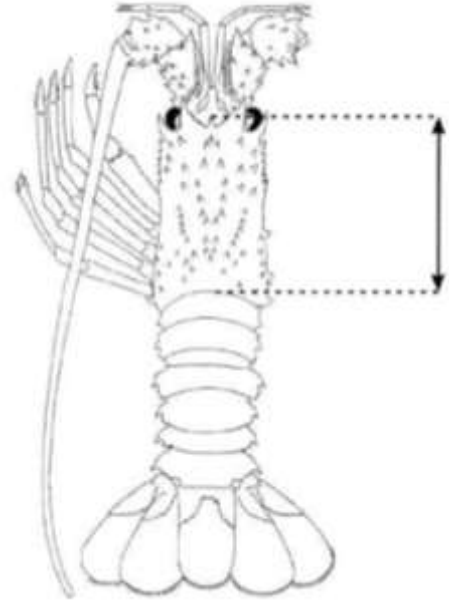


Figure 7. A spinous spider crab (*Maja squinado*)

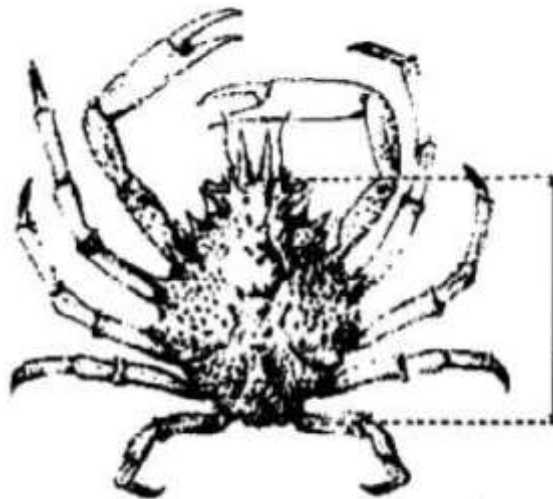


Figure 8. An edible crab (*Cancer pagurus*)

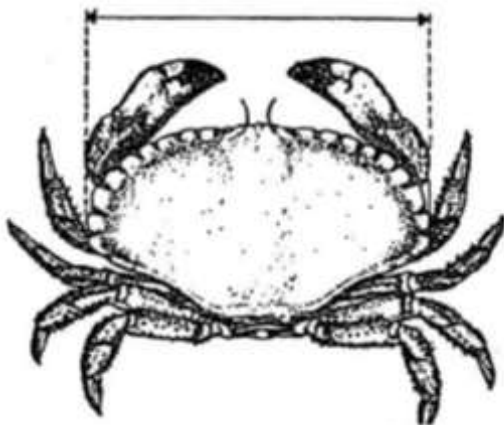


Figure 9. A velvet crab (*Necora puber*)

