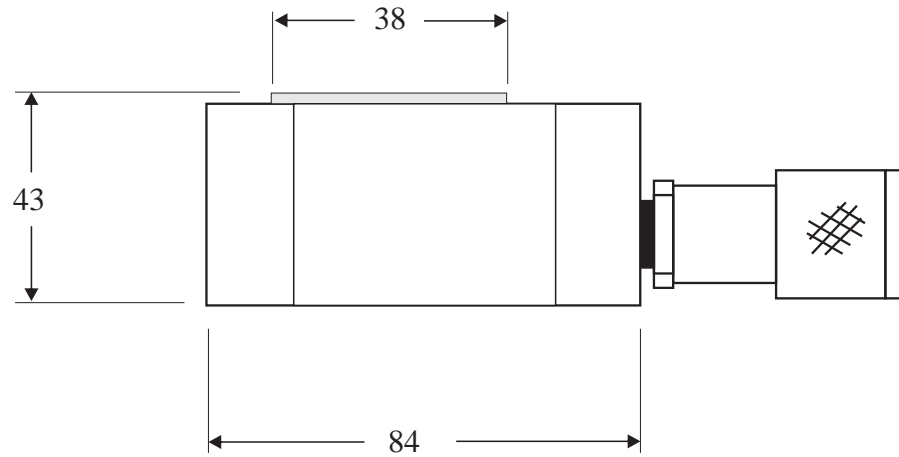
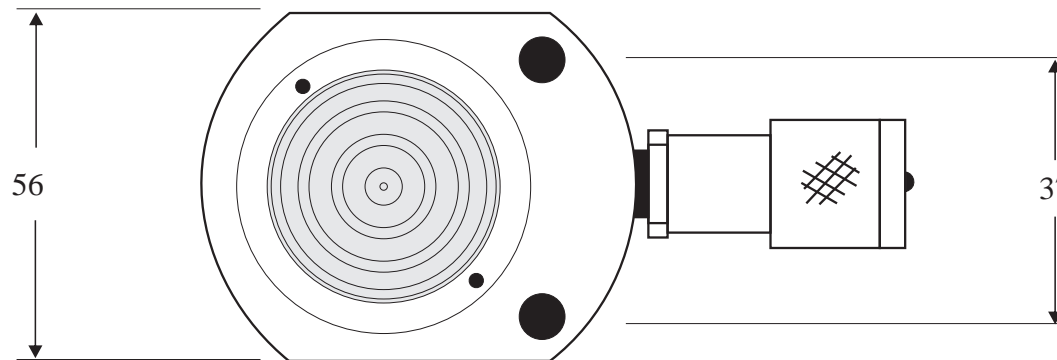


PJ10-11 Pad Jacks



IN-PUT
COUPLING



7mm dia,
Fixing Holes

Maximum Capacity:	100 Kns
Maximum Stroke:	11 mm
Maximum Pressure:	700 Bar
Fluid Requirement:	0.02 Lts
Jack Weight :	1.5 Kgs

HYDRA - CAPSULE	
HEAVY DUTY JACKING SYSTEMS	
DESCRIPTION:	PJ10-11 Pad Jacks
DRAWING No.	CorelDraw-PJ10-11.cdr