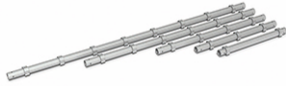


# Alshor Plus A lightweight, aluminium shoring system.

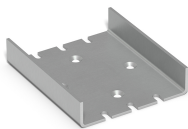
## Components

### Legs



Code	Description	Weight
ASX31500	Alshor Plus Leg 1500mm	7.3kg
ASX32000	Alshor Plus Leg 2000mm	9.6kg
ASX32500	Alshor Plus Leg 2500mm	12.3kg
ASX33000	Alshor Plus Leg 3000mm	14.7kg
ASX34000	Alshor Plus Leg 4000mm	19.6kg
ASX10013	Alshor Plus Spigot 6mm	2.5kg
ASX10020	Alshor Plus Straight Pin 16mm	0.1kg

### U Plate



Code	Description	Weight
ASX10023	U Plate 270 x 220 x 6mm	4.0kg
BNX12001	M12 x 40 Bolt Gr8.8 BZP CSK	0.05kg
BNU12004	M12 Wing Nut Gr8 BZP	0.01kg

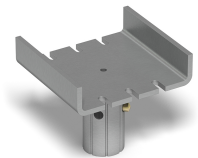
### Jacks



Code	Description	Weight
ASX10012	Long Jack. Range = 200 - 1250mm	14.9kg
ASX10030	Short Jack. Range = 120 - 750mm	9.8kg
ASX10029	Alshor Plus Jack Spanner	4.8kg

### U Heads

Note: Alshor Plus Straight Pin (ASX10020) must be used in tension applications.

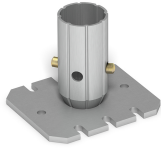


Code	Description	Weight
ASX10015	U Head 220 (w) x 10mm	6.6kg
ASX10059	Alshor Plus / Airedek U Head	5.4kg
ASX10066	Alshor Plus / Airedek U Head	4.2kg
ASX10056	Alshor Plus Superslim Clamp	0.7kg

# Alshor Plus A lightweight, aluminium shoring system.

## Components

### Base Plate



Code	Description	Weight
ASX10011	Alshor Plus Base 10mm	3.5kg

### Frames



Code	Description	Weight
ASX41200	Alshor Plus Frame 1200mm	8.9kg
ASX41800	Alshor Plus Frame 1800mm	12.2kg
ASX42400	Alshor Plus Frame 2400mm	14.5kg
ASX43000	Alshor Plus Frame 3000mm	16.9kg

### Ledgers



Code	Description	Weight
ASX81200	Alshor Plus Ledger 1200mm	4.9kg
ASX81800	Alshor Plus Ledger 1800mm	6.6kg
ASX82400	Alshor Plus Ledger 2400mm	8.4kg
ASX83000	Alshor Plus Ledger 3000mm	10.1kg

### Board Bearers



Code	Description	Weight
ASX61200	Board Bearer 1200mm	5.7kg
ASX61800	Board Bearer 1800mm	7.9kg
ASX62400	Board Bearer 2400mm	10.2kg
ASX63000	Board Bearer 3000mm	15.2kg

### Brackets



Code	Description	Weight
ASX10040	Alshor Drop Beam Bracket	1.6kg

### Tripod



Code	Description	Weight
ASX10060	Alshor Plus Tripod	11.0kg

# Alshor Plus A lightweight, aluminium shoring system.

## Components

### Advancing Handrail



Code	Description	Weight
ASX10057	Advancing Handrail 1200mm	13.3kg
ASX10058	Advancing Handrail 1800mm	15.6kg

### Ladder System



Code	Description	Weight
ASX50001	Alshor Plus Bottom Ladder	4.8kg
ASX50002	Alshor Plus Starter Ladder	5.3kg
ASX51000	Alshor Plus Ladder 1000mm	3.7kg
ASX51500	Alshor Plus Ladder 1500mm	4.9kg
ASX52000	Alshor Plus Ladder 2000mm	6.1kg

### Handrails

Note: Not to be used as supports to Board Bearers



Code	Description	Weight
ASX71200	Alshor Plus Handrail 1200mm	3.2kg
ASX71800	Alshor Plus Handrail 1800mm	4.1kg
ASX72400	Alshor Plus Handrail 2400mm	4.8kg
ASX73000	Alshor Plus Handrail 3000mm	5.9kg

### Captive Deck System



Code	Description	Weight
ASX10043	Alshor Plus Platform 1800 x 300mm	9.3kg
ASX10044	Alshor Plus Platform 1800 x 505mm	12.7kg
ASX10045	Alshor Plus Platform 1800 x 600mm	12.8kg
ASX10046	Alshor Plus Platform 2400 x 300mm	12.1kg
ASX10047	Alshor Plus Platform 2400 x 505mm	16.4kg
ASX10048	Alshor Plus Platform 2400 x 600mm	16.8kg