



# Handling and Packing Guidance

## Megashor & Accessories

27 June 2016

## 1.1 Introduction

This document provides general guidance for the storage, transportation and handling of Megashor legs and associated accessories.

Handling of Megashor legs & accessories shall only be undertaken and supervised by appropriately trained personnel familiar with the safe use of the equipment. Where needed, further guidance can be provided by RMDK personnel but it remains the customer's responsibility to determine and apply suitable risk controls to enable the safe handling of the equipment.

Should you require further assistance please contact our customer services helpline or your nearest branch from the details listed below:

## 1.2 Contact Details:

**Customer Services Helpline: 0800 389 8231**

### **Glasgow Branch:**

1650A London Road, Glasgow, G31 4QG  
Tel: 0141 5547425

### **Haydock Branch:**

Millfield Business Park, Millfield Lane, St. Helens, WA11 9UT  
Tel: 01942 273815

### **Midlands Branch:**

Stubbers Green Road, Aldridge, Walsall, WS9 8BL  
Tel: 01922 450800

### **Cardiff Branch:**

Penarth Road, Cardiff, South Glamorgan, CF11 8UP  
Tel: 029 2037 4521

### **Barking Branch:**

24 River Road, Barking, Essex, ID11 0GD  
Tel: 01708 552975

# Handling and Packing Guidance

## 2.1 Megashor legs - Handling



Storage pallet with yellow leg

Product Code	Description	Individual weight	Method of handling	Max. pack qty	Typical pack weight (approx)	Method of handling
MSX15400	Megashor leg 5400mm	308.0kg	X	8	2,464.0 kg	
MSX12700	Megashor leg 2700mm	163.8kg	X	8	1,310.4 kg	
MSX11800	Megashor leg 1800mm	112.4 kg	X	8	899.2 kg	
MSX10900	Megashor leg 900mm	63.6 kg	X	8	508.8 kg	
MSX10450	Megashor leg 450mm	46.4 kg		16 on board	742.4 kg	
MSX10270	Megashor leg 270mm	30.4 kg		24 on board	729.6 kg	
MSX10090	Megashor leg 90mm	22.2 kg		30 in bin	666.0 kg	
MSX10012	Megashor end plate	9.7 kg		100 in bin	970.0 kg	

## 2.2 Megashor legs - Storage and Transport

### Storage:

1. Maximum pack qty varies see table above, RMDK storage bins, wooden boards and post pallets all have a 1 tonne maximum limit.
2. Stacking of pallets, bins and boards should be checked for weight before stacking on top.
3. Typical pack can be transported easily by FLT.
4. To ensure correct lifting, the yellow leg must be located on the right side of the fork lift drivers view, ensuring that the forks of the truck lift the pallet / bin across the rails.

### Typical qty easily transported



### Stack longest lengths a maximum of 5 banded packs high.



### Incorrect lift



### Correct lift



## 3.1 Megashor Jacks - Handling

Product Code	Description	Individual weight	Method of handling	Max. pack qty	Typical pack weight (approx)	Method of handling
MSX10011	Megashor jack 410 - 620mm 1000kN	67.0 kg		12	588.0 kg	

## 3.2 Megashor Jacks - Storage and Transport

### Storage:

1. Maximum pack qty 12, RMDK storage bins, wooden boards and post pallets all have a 1 tonne maximum limit.
2. Stacked no more than 3 banded wooden boards high on stable ground.
3. Typical pack can be transported easily by FLT
4. Jacks to be labelled and identified.

### Typical quantity easily transported



# Handling and Packing Guidance

## 4.1 Megashor Jack Plates - Handling



Product Code	Description	Individual weight	Method of handling	Max. pack qty	Typical pack weight (approx)	Method of handling
MSX10021	Megashor jack plate	25.4 kg		30	762.0 kg	

## 4.2 Megashor Jack Plates - Storage and Transport

### Storage:

1. Maximum pack qty 30, RMDK storage bins, wooden boards and post pallets all have a 1 tonne maximum limit.
2. Stacked no more than 6 bins high on stable ground.
3. Typical pack can be transported easily by FLT.
4. Bins should be shrink wrapped and contents identified.
5. To ensure correct lifting, the yellow leg must be located on the right side of the fork lift drivers view, ensuring that the forks of the truck lift the pallet / bin across the rails.

### Typical pack qty 30



### Easily transported by Fork Lift Truck



### Incorrect lift



### Correct lift



## 5.1 Megashor Hydraulic Units - Handling

Product Code	Description	Individual weight	Method of handling	Typical pack qty	Typical pack weight (approx)	Method of handling
MSX10017	Megashor hydraulic unit	143.0 kg	X	4	572.0 kg	 

## 5.2 Megashor hydraulic units - Storage and Transport

### Storage:

1. Maximum pack qty 4, RMDK storage bins, wooden boards and post pallets all have a 1 tonne maximum limit.
2. Stacked no more than 2 banded wooden boards high on stable ground.
3. Typical pack can be easily transported by FLT.

Typical pack qty 4




Stacked 2 wooden boards high





## 6.1 Megashor Brace Plates - Handling

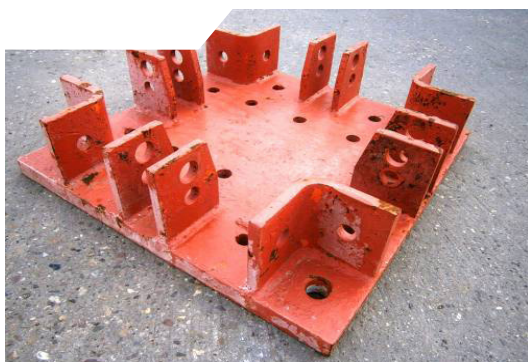
Product Code	Description	Individual weight	Method of handling	Typical pack qty	Typical pack weight (approx)	Method of handling
MSU10002	Megashor brace plate	60.5 kg		16	968.0 kg	

## 6.2 Megashor brace plates - Storage and Transport

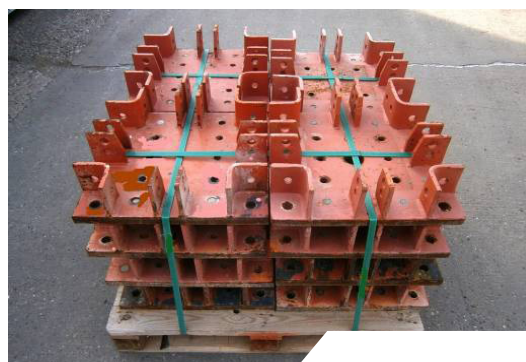
### Storage:

1. Maximum pack qty 16, RMDK storage bins, wooden boards and post pallets all have a 1 tonne maximum limit.
2. Stacked no more than one banded wooden board high on stable ground.
3. Typical pack can be transported easily by FLT.
4. Avoid heavy stacking on top of brace plates to protect the wooden board.

### Megashor brace plate



### 16No stacked and banded



### Easily transported by FLT



## 7.1 Megashor Rocking Head - Handling

Product Code	Description	Individual weight	Method of handling	Typical pack qty	Typical pack weight (approx)	Method of handling
MSX10026	Megashor rocking head 180mm	48.4 kg		12	580.0 kg	

## 7.2 Megashor Rocking Head - Storage and Transport

### Storage:

1. Maximum pack qty 12, RMDK storage bins, wooden boards and post pallets all have a 1 tonne maximum limit.
2. Stacked no more than 1 fully banded wooden board high on stable ground.
3. Typical pack can be transported easily by FLT.
4. Wooden boards should be banded both ways as below and equipment identified with a label.

### Megashor rocking head 180mm



### Easily transported by FLT





## 8.1 Megashor 90 Degree Corner - Handling

Product Code	Description	Individual weight	Method of handling	Typical pack qty	Typical pack weight (approx)	Method of handling
MSU10005	Megashor 90 degree corner	71.2 kg	 	6	427.2 kg	 

## 8.2 Megashor 90 Degree Corner - Storage and Transport

### Storage:

1. Maximum pack qty 6, RMDK storage bins, wooden boards and post pallets all have a 1 tonne maximum limit.
2. Stacked no more than 2 banded wooden boards high on stable ground.
3. Typical pack can be transported easily by FLT.

### Megashor 90 degree corner











### Stacking example



Due to the individual weight of each Megashor 90 degree corner it is advisable to stack on an RMDK wooden board as shown in the picture above (right). Stacking the same or similar will give ease of access for lifting by FLT or crane and also be within the allowable weight for stacking one more wooden board on top when both are banded as above.

# Handling and Packing Guidance

## 9.1 Megashor Push Pull Jacks - Handling

Product code	Description	Individual weight	Method of handling	Typical pack qty	Typical pack weight (approx)	Method of handling
MSU10008	Megashor push pull jack R-H orange	75.6 kg	 	5	378.0 kg	 
MSU10009	Megashor push pull jack L-H green	75.6 kg	 	5	378.0 kg	 

## 9.2 Megashor Push Pull Jacks - Storage and Transport

### Storage:

1. Maximum pack qty 5, RMDK storage bins, wooden boards and post pallets all have a 1 tonne maximum limit.
2. Stacked no more than 2 banded wooden boards high on stable ground.
3. Push bands through base holes as below.
4. Typical pack can be transported easily by FLT.

### Easily transported by FLT



### Megashor push pull jack



### Keep L hand & R hand separated



# Handling and Packing Guidance

## 10.1 Megashor Push Pull Adaptor - Handling



Storage bin with yellow leg

Product Code	Description	Individual weight	Method of handling	Typical pack qty	Typical pack weight (approx)	Method of handling
MSU10006	Megashor push pull adapter	20.4 kg		30 in bin	612.0 kg	

## 10.2 Megashor Push Pull Adaptor - Storage and Transport

### Storage:

1. Maximum pack qty 30, RMDK storage bins, wooden boards and post pallets all have a 1 tonne maximum limit.
2. Stacked no more than 6 storage bins high on stable ground.
3. Typical pack can be transported easily by FLT.
4. To ensure correct lifting, the yellow leg must be located on the right side of the fork lift drivers view, ensuring that the forks of the truck lift the pallet / bin across the rails.

Push pull adaptor



Easily transported by FLT



# Handling and Packing Guidance

## 11.1 Megashor Tilt Plate - Handling

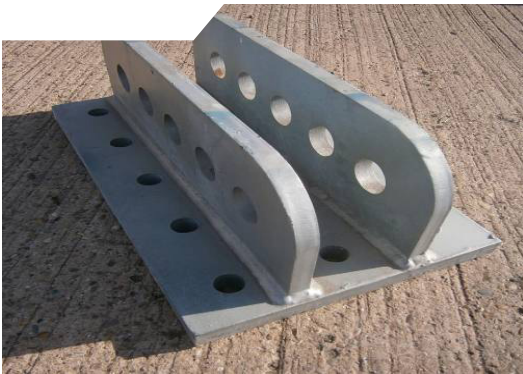
Product Code	Description	Individual weight	Method of handling	Typical pack qty	Typical pack weight (approx)	Method of handling
MSU10007	Megashor push pull tilt plate	48.6 kg	 	16 in bin	777.6 kg	 

## 11.2 Megashor Tilt Plate - Storage and Transport

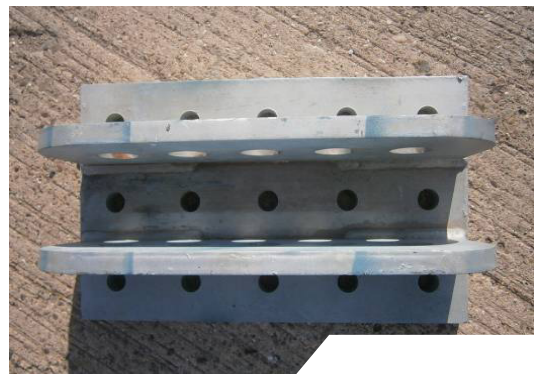
### Storage:

1. Maximum pack qty 16, RMDK storage bins, wooden boards and post pallets all have a 1 tonne maximum limit.
2. Stacked no more than 1 banded pallet high on stable ground.
3. Typical pack can be transported easily by FLT.

Push pull tilt plate



Plan view



Banded pack of 16



# Handling and Packing Guidance

## 12.1 Megashor Vernier Braces - Handling



Product Code	Description	Individual weight	Method of handling	Typical pack qty	Typical pack weight (approx)	Method of handling
MSX10005	Vernier brace long inner	11.4 kg		80	912.0 kg	
MSX10006	Vernier brace long outer	10.0 kg		100	1000.0 kg	
MSX10033	Vernier brace short inner	5.2 kg		150	780.0 kg	
MSX10034	Vernier brace short outer	7.6 kg		100	760.0 kg	

## 12.2 Megashor Vernier Braces - Storage and Transport

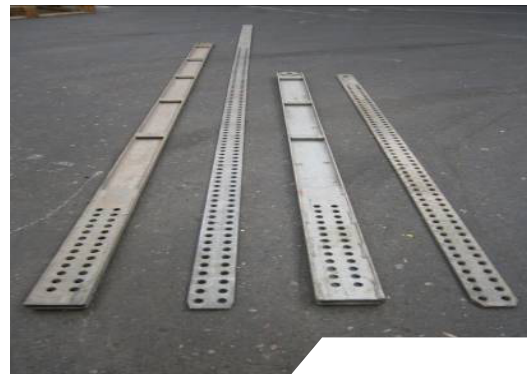
### Storage:

1. Do not exceed typical pack qty, RMDK storage bins, wooden boards and post pallets all have a 1 tonne maximum limit.
2. Stacked no more than 6 post pallets high on stable ground.
3. Typical pack can be transported easily by FLT.
4. Contents identified with a label.

### Typical pack easily transported



### Keep inner & outer separated





# Handling and Packing Guidance

## 13.1 Megashor Joint Stiffeners - Handling



Storage bin with yellow leg

Product Code	Description	Individual weight	Method of handling	Typical pack qty	Typical pack weight (approx)	Method of handling
MSX10024	Megashor joint stiffener	8.2 kg		60	492.0 kg	

## 13.2 Megashor Joint Stiffeners - Storage and Transport

### Storage:

1. Maximum pack qty 60, RMDK storage bins, wooden boards and post pallets all have a 1 tonne maximum limit.
2. Stacked no more than 6 bins high on stable ground.
3. Typical pack can be transported easily by FLT.
4. Bins should be shrink wrapped and contents identified.

### Easily transported by Fork Lift Truck



### 6 bins high



# Handling and Packing Guidance

## 14.1 Megashor Intermediate Bearer - Handling



Storage bin with yellow leg

Product Code	Description	Individual weight	Method of handling	Typical pack qty	Typical pack weight (approx)	Method of handling
MSX10019	Megatruss intermediate bearer	13.8 kg		30	414.0 kg	

## 14.2 Megashor Intermediate Bearer - Storage and Transport

### Storage:

1. Maximum pack qty 60, RMDK storage bins, wooden boards and post pallets all have a 1 tonne maximum limit.
2. Stacked no more than 6 bins high on stable ground.
3. Typical pack can be transported easily by FLT.
4. Bins should be shrink wrapped and contents identified for best practice.

















### Intermediate bearer



### Typical qty 30 easily transported



## 15.1 Megashor Header Beams - Handling

Product Code	Description	Individual weight	Method of handling	Typical pack qty	Typical pack weight (approx)	Method of handling
MSX10009	Megashor header beam 950mm	150.3 kg	 	6 on board	901.8 kg	 
MSX10010	Megashor header beam 3300mm	674.3 kg	 	2	1348.6 kg	 
MSX10014	Megashor header beam 3810mm	1036.0 kg	 	2	2072.0 kg	 
MSX10015	Megashor header beam 5000mm	1319.5 kg	 	2	2639.0 kg	 

## 15w.2 Megashor Header Beams - Storage and Transport

### Storage:

1. Maximum banded pack qty 2 for larger beams, 6 x 950mm beams banded on a wooden board.
2. Stacked no more than 4 banded rows high on stable ground, only 3 rows at the front.
3. Typical pack can be transported easily by FLT.

Pack of 2 beams



Typical stacking



Easily transported by FLT

