

Rapidshor A heavy duty galvanised modular steel shoring system

Components

Rapidshor Standards



Code	Description	Weight
RSX11500	Rapidshor Standard 1500mm	8.3kg
RSX12500	Rapidshor Standard 2500mm	15.1kg
RSU40675	Standard OE 675mm	3.0kg
RSX41000	Standard OE 1000mm	5.4kg
RSX41500	Standard OE 1500mm	8.0kg
RSX42000	Standard OE 2000mm	10.8kg
RSX42500	Standard OE 2500mm	13.5kg

Ledgers

AWL - the Ledger acting in tension or compression = 20kN



Code	Description	Weight
RSX20300	Rapidshor Ledger 300mm	2.2kg
RSX20600	Rapidshor Ledger 600mm	3.2kg
RSX20900	Rapidshor Ledger 900mm	4.3kg
RSX21200	Rapidshor Ledger 1200mm	5.4kg
RSX21500	Rapidshor Ledger 1500mm	6.4kg
RSX21800	Rapidshor Ledger 1800mm	7.5kg
RSX22400	Rapidshor Ledger 2400mm	9.6kg
RSX23000	Rapidshor Ledger 3000mm	11.8kg

Sleeves & Clip



Code	Description	Weight
RSX10005	Joint Sleeve 300mm	1.5kg
RSX10010	Base Sleeve 216mm	1.1kg
RSX10009	Rapidshor Sleeve Clip	0.1kg

Adjustable Braces



Code	Description	Weight
RSX30003	Super Short Adjustable Jack Brace. Range: 840 - 1280mm	6.4kg
RSX30002	Short Adjustable Jack Brace. Range: 1085 - 1770mm	8.1kg
RSX30001	Long Adjustable Jack Brace. Range: 1530 - 2660mm	11.4kg

Rapidshor A heavy duty galvanised modular steel shoring system

Components

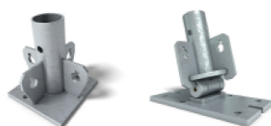
Fixed Braces

*This Brace also fits a 900 x 1500mm bay.



Code	Description	Weight
RSX31009	Fixed Brace 1000 x 900mm (Self)	4.9kg
RSX31012	Fixed Brace 1000 x 1200mm (Purple)	5.4kg
RSX31018	Fixed Brace 1000 x 1500mm (Red)	8.0kg
RSX31024	Fixed Brace 1000 x 2400mm (White)	9.9kg
RSX31509	Fixed Brace 1500 x 900mm (Yellow)	6.1kg
RSX31512	Fixed Brace 1500 x 1200mm (Pink)	6.6kg
RSX31515	Fixed Brace 1500 x 1500mm (Orange)	8.3kg
RSX31518	Fixed Brace 1500 x 1800mm (Green)	9.1kg
RSX31524	Fixed Brace 1500 x 2400mm (Brown)	12.9kg
RSX31530	Fixed Brace 1500 x 3000mm (Light Brown)	15.4kg
RSX32012	Fixed Brace 2000 x 1200mm (Blue-Green)	9.2kg
RSX32015	Fixed Brace 2000 x 1500mm (Yellow)	7.5kg
RSX32018	Fixed Brace 2000 x 1800mm (Black)	12.4kg
RSX32024	Fixed Brace 2000 x 2400mm (Bright Red)	14.2kg
RSX32030	Fixed Brace 2000 x 3000mm (Dark Brown)	16.3kg

Bases



Code	Description	Weight
RSX10002	Rapidshor Base 165mm	3.1kg
RSX10006	Tilt Base 227mm	7.7kg

Adjustable Jack



Code	Description	Weight
RSX10004	Rapidshor Jack. Range = 25 - 540mm	6.1kg
RSU10340	Rapidshor Short Jack 25-340mm	5.0kg

Heads



Code	Description	Weight
RSX10003	Rapidshor Brace U-Head 182mm	6.7kg
RSX10007	Rapidshor Tilt Head 182mm wide	13.1kg
RSX10008	Rapidshor U Plate 8 thk x 182mm Wide	5.3kg
RSX10001	Rapidshor U Plate 8 thk x 220mm Wide	5.7kg

Rapidshor A heavy duty galvanised modular steel shoring system

Components

Board Bearers



Code	Description	Weight
ASX61200	Board Bearer 1200mm	5.7kg
ASX61800	Board Bearer 1800mm	7.9kg
ASX62400	Board Bearer 2400mm	10.2kg
ASX63000	Board Bearer 3000mm	15.2kg

Stair Access

SWL = 2.5kN/m²



Code	Description	Weight
RSX70003	Stair Handrail	11.0kg
RSX70006	Stair Unit - Steel	70.0kg
BNX12007	M12x100 Set Pin gr8.8 BZP	0.01kg
BNU12001	M12 Nut gr8.8 BZP	0.01kg
BNU12002	M12 Round Washer	0.01kg